

James Electric

All the parts. All the time.

CLEARANCE ITEMS

DATE: 2018 / 03 / 01



3M083D
ACKLANDS-GRAINGER / DAYTON

QTY - 2 \$63.35
P/N 3M083

HP	AMPS	PHASE	RPM	MOTOR	ROTATION	BEARING	SHAFT DIA.	BODY DIA.
1/20	1.8	1	1550	Shaded Pole	CCWLE	Sleeve	5/16"	3.3"



3M778
ACKLANDS-GRAINGER / DAYTON

QTY - 1 \$58.95
P/N 3M778

HP	AMPS	PHASE	RPM	MOTOR	ROTATION	BEARING	SHAFT DIA.	BODY DIA.
1/20	2.1	1	1550	Shaded Pole	CWSE	Ball	5/16"	3.3"



3M583
ACKLANDS-GRAINGER / DAYTON

QTY - 1 \$109.36
P/N 3M583

MOTOR APPLICATION: HVAC/R
MOTOR SUB APPLICATION: DIRECT DRIVE FAN/BLOWER

HP	VOLTS	AMPS	PHASE	RPM	FRAME	ROTATION	BEARING	BODY DIA.	LENGTH LESS SHAFT
1/15	115	3.0	1	1050	42YZ	CWSE	Sleeve	5"	3-5/16"



4M075D
ACKLANDS-GRAINGER / DAYTON

QTY - 1 \$23.19
P/N 4M075

HP	AMPS	PHASE	RPM	MOTOR	ROTATION	BEARING	SHAFT DIA.
1/70	1	1	3000	Shaded Pole	CWSE	Sleeve	3/16"

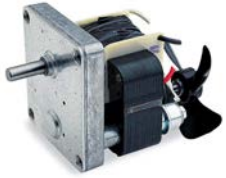


4Z147
ACKLANDS-GRAINGER / DAYTON

QTY - 1 \$155.54
P/N 4Z147

APPLICATION: VENDING MACHINES AND VALVE ACTUATORS

INPUT HP	VOLTS	AMPS	PHASE	RPM	MOTOR	ROTATION	BEARING	SHAFT DIA.
1/60	115	2.00	1	50	Shaded Pole	CW	SLV.	3/8"



3M258 / HGM4050-33
ACKLANDS-GRAINGER / DAYTON

QTY - 1 \$60.02
P/N 3M258

APPLICATION: RESTAURANT EQUIPMENT, WATER SOFTENER VALVE CONTROLS

HP	RPM	VOLT	AMPS	ROT.	TYPE	ENCL.	SHAFT LENGTH	SHAFT DIA.	MNT.	SHAFT
1/70	50	115	0.65	CW	SP	OPEN	.75"	5/16"	ALL ANGLE	SINGLE



775
AO SMITH / CENTURY

QTY - 2 \$133.30
P/N 775

1/50HP 230V 3200RPM SP Blower

HP	RPM	VOLT	AMPS	ROT.	TYPE	ENCL.	CFM	SPD.	BEARING	MOTOR DIA.	A DIM.
1/50	3000	230	0.54	CCWSE	SP	OAO	75	1	BALL	3-3/8"	7-1/8"

CROSS REFERENCE: X38050005, Fasco A075



776
AO SMITH / CENTURY

QTY - 1 \$107.43
P/N 776

75CFM 1/50HP 230V 3000RPM DRAFT INDUCER

HP	RPM	VOLT	AMPS	ROT.	TYPE	ENCL.	CFM	SPD.	BEARING	MOTOR DIA.
1/50	3200	230	0.40	CCWLE	SP	OPEN	65	1	SLEEVE	3.3"

CROSS REFERENCE: Fasco A151, HQ1050144UN, 1050144 JA1M109 JA1M207



9443
AO SMITH / CENTURY

QTY - 2 \$67.64
P/N 9443

60CFM 230V CENTRIFUGAL BLOWER

HP	RPM	VOLT	AMPS	ROT.	TYPE	ENCL.	CFM	SPD.	BEARING
1/100	3000/2500	208/240	.30/.30	CWSE	SP	OAO	60	1	SLEEVE

CROSS REFERENCE: Fasco 50747-D230, WWG 2C914



9448
AO SMITH / CENTURY

QTY - 1 \$150.59
P/N 9448

1/10HP 120V 3000RPM 400CFM BLOWER ASSEMBLY

HP	RPM	VOLT	AMPS	ROT.	TYPE	ENCL.	CFM	SPD.	PHASE	BEARING	DIA.
1/10	3000	120	3.80	CWLE	SP	OPEN	400	1	1	SLEEVE	3.3"



A072 FASCO

QTY - 1 \$69.67
P/N A072

HP	RPM	VOLT	AMPS	ROT.	TYPE	HZ	SPD.	PHASE	BEARING	DIA.
1/45	3000	115	1.15	CWSE	SP	60	1	1	BALL	3.3"
CROSS REFERENCE:		Trane 7058-1726. Dayton 45KC30								



A088 FASCO

1/25HP 3200RPM Draft Inducer (115V)

QTY - 2 \$119.38
P/N A088

HP	RPM	VOLT	AMPS	ROT.	TYPE	HZ	SPD.	PHASE	BEARING	CFM.
1/25	3200	115	1.3	CWSE	SP	60	1	1	SLEEVE	88
CROSS REFERENCE:		Coleman 7021-6759, Dornback 7021-5478, York 7021-8629, 7021-7105								



A100 FASCO

QTY - 2 \$113.74
P/N A100

HP	RPM	VOLT	AMPS	ROT.	TYPE	HZ	SPD.	PHASE	BEARING	CFM.
1/45	2900	115	1.21	CWSE	SP	60	1	1	SLEEVE	70-100
CROSS REFERENCE:		Excel Comfort 7058-0280								



A120 FASCO

QTY - 2 \$116.56
P/N A120

HP	RPM	VOLT	AMPS	ROT.	TYPE	HZ	SPD.	PHASE	BEARING	CFM
1/40	3000	120	1.1	CW OLE	SP	60	2	1	BALL	162
CROSS REFERENCE:		Alladin Steel 7002-2983								



A122 FASCO

QTY - 2 \$185.90
P/N A122

HP	RPM	VOLT	AMPS	ROT.	TYPE	HZ	SPD.	PHASE	BEARING	CFM
1/17	3000	115	1.75	CWSE	SP	60	1	1	SLEEVE	101-135
CROSS REFERENCE:		Nordyne 7021-11227								



A124
FASCO

QTY - 1 **\$196.98**
P/N A124

3000RPM 1/15HP Draft Inducer (115V)

HP	RPM	VOLT	AMPS	ROT.	TYPE	HZ	SPD.	PHASE	ENCL.	BEARING	DIA.
1/15	3000	115	1.75	CWSE	SP	60	1	1	OPEN	SLEEVE	3.3"
CROSS REFERENCE:				Nordyne 7021-11379, 6219290							



A126
FASCO

QTY - 2 **\$147.40**
P/N A126

3000RPM 1/45HP Draft Inducer (115V)

HP	RPM	VOLT	AMPS	ROT.	TYPE	HZ	SPD.	PHASE	ENCL.	BEARING	DIA
1/45	3000	115	1.8	CWSE	SP	60	1	1	OPEN	BALL	-
CROSS REFERENCE:				Nordyne 7002-3158, 6219500							



A142
FASCO

QTY - 2 **\$209.36**
P/N A142

3450RPM 1/20HP Draft Inducer (115V)

HP	RPM	VOLT	AMPS	ROT.	TYPE	HZ	SPD.	PHASE	BEARING	DIA	
1/20	3450	115	0.7	CW	PSC	60	1	1	SLEEVE	3.3	
CROSS REFERENCE:				Rheem 7062-1881, 7062-2615, PMI/Vulcan Hart 7062-2513, 416673-00003							



A151
FASCO

QTY - 2 **\$94.28**
P/N A151

2800 1/90HP Draft Inducer (230V)

HP	RPM	VOLT	AMPS	ROT.	TYPE	HZ	SPD.	PHASE	BEARING	DIA	
1/90	2800	230	0.3	CW	SP	60	1	1	SLEEVE	3.3	
CROSS REFERENCE:				ICP HQ1050144							



A154
FASCO

QTY - 2 **\$177.49**
P/N A154

3000RPM 1/30HP Blower (115V)

HP	RPM	VOLT	AMPS	ROT.	TYPE	HZ	SPD.	PHASE	BEARING	DIA	
1/30	3000	115	1.2	CW	SP	60	1	1	SLEEVE	3.3	
CROSS REFERENCE:				7021-9428							



A167 FASCO

QTY - 1 **\$64.63**
P/N A167

3000RPM 1/15HP Draft Inducer (115V)

RPM	VOLT	AMPS	TYPE	HZ	SPD.	BEARING	DIA	CFM	@0.1	@0.2	@0.3	@0.4
2900	115	0.4	SP	60	1	SLEEVE	3.3	30	30	27	25	5
CROSS REFERENCE:			7002-3388									



A181 FASCO

QTY - 2 **\$118.44**
P/N A181

3000RPM 1/45HP Draft Inducer (115V)

HP	RPM	VOLT	AMPS	ROT.	TYPE	SPD.	BEARING	DIA
1/30	3192	115	1.5	CW	SP	1	BALL	3.3
CROSS REFERENCE:				Goodman 7058-0136, 20044403				



A190 FASCO

QTY - 2 **\$302.55**
P/N A190

3450RPM 1/20HP Draft Inducer (115V)

HP	RPM	VOLT	AMPS	ROT.	TYPE	SPD.	BEARING	DIA
1/17	5200	115	1.3	CW	SP	1	BALL	3.3
CROSS REFERENCE:		C341445P01, X38040336020, 7000-5833, 7000-5838, D341114G01, 7000-5806, X38040336020, C341445P01						



A191 FASCO

QTY - 2 **\$150.49**
P/N A191

1550RPM 1/20HP Draft Inducer (230V)

HP	RPM	VOLT	AMPS	ROT.	TYPE	SPD.	BEARING	DIA
1/15	3000	208-230	0.8	CCW	SP	1	SLEEVE	3.3
CROSS REFERENCE:		Trane 7021-6683, X38040251-01-7						



A198 FASCO

QTY - 2 **\$100.04**
P/N A198

3000RPM 1/30HP Blower (115V)

HP	RPM	VOLT	AMPS	ROT.	TYPE	SPD.	BEARING	DIA
1/45	3000	115	1.75	CW	SP	1	BALL	-
CROSS REFERENCE:		Trane 7058-0259, D342077P01						



A199
FASCO

QTY - 1 **\$97.29**
P/N A199

3000RPM 1/15HP Draft Inducer (115V)

HP	RPM	VOLT	AMPS	ROT.	TYPE	SPD.	BEARING	DIA
1/45	3000	115	1.75	CW	SP	1	BALL	-
CROSS REFERENCE:		Trane 7058-0260, D342077P02						



A201
FASCO

QTY - 2 **\$145.18**
P/N A201

3000RPM 1/45HP Draft Inducer (115V)

HP	RPM	VOLT	AMPS	ROT.	TYPE	SPD.	BEARING	DIA
1/30	3000	208-230	0.65	CCW	SP	1	BALL	3.3
CROSS REFERENCE:		Lennox 7021-10055, 7021-10743, 41144-002						



A203
FASCO

QTY - 1 **\$147.40**
P/N A203

3450RPM 1/20HP Draft Inducer (115V)

HP	RPM	VOLT	AMPS	ROT.	TYPE	SPD.	BEARING	DIA
1/20	3400	115	1.8	CCW	SP	1	BALL	3.3
CROSS REFERENCE:		Lennox 7021-10841, 49L5301						



A208
FASCO

QTY - 1 **\$99.64**
P/N A208

1550RPM 1/20HP Draft Inducer (230V)

HP	RPM	VOLT	AMPS	ROT.	TYPE	SPD.	BEARING	DIA
1/28	3000	115	1.75	CCW	SP	1	BALL	-
CROSS REFERENCE:		Lennox 7058-0322, 60M8101						



A222
FASCO

QTY - 2 **\$181.48**
P/N A222

HP	RPM	VOLT	AMPS	ROT.	TYPE	SPD.	BEARING	DIA
1/35	3000	115	1.05	CCW	SP	1	BALL	3.3
CROSS REFERENCE:		York 7021-8317, 026-32067-700, 7021-7481						



A224 FASCO

QTY - 1 \$346.58
P/N A224

HP	RPM	VOLT	AMPS	ROT.	TYPE	SPD.	BEARING	DIA
1/18	3450	115	0.8	CW	SP	2	SLEEVE	3.3
CROSS REFERENCE:		York 7062-5048, 024-27654-000, 7062-4743						



A227 FASCO

QTY - 1 \$246.98
P/N A227

HP	RPM	VOLT	AMPS	ROT.	TYPE	SPD.	BEARING	DIA
1/25	3450	115	0.7	CW	PSC	1	SLEEVE	3.3
CROSS REFERENCE:		York 7062-4708S, 024-27641-000, 17450, 7062-4708						



A229 FASCO

QTY - 1 ? \$112.33
P/N A229

HP	RPM	VOLT	AMPS	ROT.	TYPE	SPD.	BEARING	DIA
1/25	3000	115	1.75	CW	SP	1	BALL	-
CROSS REFERENCE:		York 7058-0267S, 17499, 7058-0267 J						



A240 FASCO

QTY - 1 \$162.44
P/N A240

HP	RPM	VOLT	AMPS	ROT.	TYPE	SPD.	BEARING	DIA
1/50	3000	115	1.1	CCW	SP	1	SLEEVE	3.3
CROSS REFERENCE:		Rheem 7021-8183, 70-21496-83						



A242 FASCO

QTY - 2 \$175.72
P/N A242

HP	RPM	VOLT	AMPS	ROT.	TYPE	SPD.	BEARING	DIA
1/50	3400	115	1.36	CW	SP	1	SLEEVE	3.3
CROSS REFERENCE:		Rheem 7021-7150, 70-22436-01						



A243
FASCO

QTY - 1 \$171.30
P/N A243

HP	RPM	VOLT	AMPS	ROT.	TYPE	SPD.	BEARING	DIA
1/50	3400	115	1.36	CW	SP	1	SLEEVE	3.3
CROSS REFERENCE:		Rheem 7021-7790, 70-22436-02						



A245
FASCO

QTY - 2 \$171.73
P/N A245

HP	RPM	VOLT	AMPS	ROT.	TYPE	SPD.	BEARING	DIA
1/15	3000	208-230	.95/.85	CW	SP	1	BALL	3.3
CROSS REFERENCE:		Rheem 7021-7490, 70-42278-02						



A247
FASCO

QTY - 1 \$152.26
P/N A247

HP	RPM	VOLT	AMPS	ROT.	TYPE	SPD.	BEARING	DIA
1/40	3250/2800	115	.95	CW	PSC	2	SLEEVE	3.3
CROSS REFERENCE:		Rheem 7062-5519						



A260
FASCO

QTY - 1 \$102.69
P/N A260

HP	RPM	VOLT	AMPS	ROT.	TYPE	SPD.	BEARING	DIA
1/45	3250	115	1	CW	SP	1	BALL	-
CROSS REFERENCE:		Trane 7058-0261, D342077P03						



A262
FASCO

QTY - 2 \$92.12
P/N A262

HP	RPM	VOLT	AMPS	ROT.	TYPE	SPD.	BEARING	DIA
1/45	3250	115	1	CW	SP	1	BALL	-
CROSS REFERENCE:		Trane 7058-0263, D34077P05						



A264
FASCO

QTY - 1 \$119.38
P/N A264

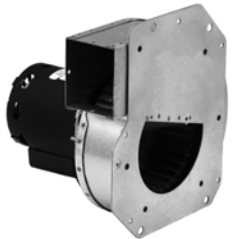
HP	RPM	VOLT	AMPS	ROT.	TYPE	SPD.	BEARING	DIA
1/120	3000	115	0.75	CW	SP	2	BALL	-
CROSS REFERENCE:		Trane 7002-3443, D342078P01						



A266
FASCO

QTY - 1 \$133.95
P/N A266

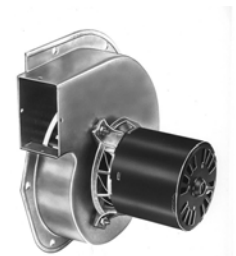
HP	RPM	VOLT	AMPS	ROT.	TYPE	SPD.	BEARING	DIA
1/125	3000	115	1	CW	SP	2	BALL	-
CROSS REFERENCE:		Trane 7002-3445, D342078P04						



A270
FASCO

QTY - 1 \$136.32
P/N A270

HP	RPM	VOLT	AMPS	ROT.	TYPE	SPD.	BEARING	DIA
1/15	3350/2800	208-230	.42/.50	CCW	PSC	2	BALL	3.3
CROSS REFERENCE:		Trane 7062-5033, X38040369010						



A287
FASCO

QTY - 1 \$137.21
P/N A287

HP	RPM	VOLT	AMPS	ROT.	TYPE	SPD.	BEARING	DIA
1/25	3000	115	1.15	CW	SP	1	SLEEVE	3.3
CROSS REFERENCE:		Goodman 7021-9655, 10585405						



A306
FASCO

QTY - 1 \$177.05
P/N A306

HP	RPM	VOLT	AMPS	ROT.	TYPE	SPD.	BEARING	DIA
1/30	3350/2900	208-230	0.3	CCW	PSC	2	SLEEVE	3.3
CROSS REFERENCE:		ICP 7062-4532, 1097245						



A331
FASCO

QTY - 1 \$197.40
P/N A331

HP	RPM	VOLT	AMPS	ROT.	TYPE	SPD.	BEARING	DIA
1/10	3200	460	.38/.33	CW	PSC	1	BALL	3.3
CROSS REFERENCE:		Lennox 7062-5554, 69M3201, 7062-4051, 7062-4518, 97J8101						



A360
FASCO

QTY - 2 \$126.15
P/N A360

HP	RPM	VOLT	AMPS	ROT.	TYPE	SPD.	BEARING	DIA
1/25	2700	115	1	CW	SP	2	BALL	-
CROSS REFERENCE:		Trane 7002-2532, D341095P01, 7002-3274, D341663P01						



B22515
FASCO

QTY - 1 \$104.46
P/N B22515

RPM	VOLT	AMPS	TYPE	HZ	SPD.	BEARING	DIA	CFM	@0.1	@0.2	@0.3	@0.4
2200	115	0.81	-	60	1	SLEEVE	-	150	145	125	50	-
CROSS REFERENCE:		-										



B45227-2
FASCO

QTY - 2 \$97.82
P/N B45227-2

RPM	VOLT	AMPS	HZ	SPD.	BEARING	CFM	@0.1	@0.2	@0.3	@0.4	@0.5	@0.6
1650	230	0.93	50/60	1	SLEEVE	265	230	212	191	175	130	27
CROSS REFERENCE:		-										



FB-RFB107
ALLTEMP / ROTOM

QTY - 1 \$247.05
P/N RFB107

HP	RPM	VOLT	AMPS	SPD.	ROT.	TYPE	ENCL.	BEAR.	BODY	MNT.	SHAFT	FRAME
1/40	3350	208/230	0.30	2	CW	PSC	OPEN	SLV.	8.70	5 TABS	BLOWER	3.3



FB-RFB701
ALLTEMP / ROTOM

QTY - 1 \$248.30
P/N RFB701

HP	RPM	VOLT	AMPS	SPD.	ROT.	TYPE	ENCL.	BEAR.	BODY	MNT.	SHAFT	FRAME
1/10	3200	208/230	0.60	1	CCW	PSC	OPEN	BALL	6.75	FLANGE	BLOWER	3.3



FB-RFB540 3.3" DIA., HIGH EFF. FLUE EXHAUST
ALLTEMP / ROTOM

QTY - 1 \$226.82
P/N FB-RFB540

HP	RPM	VOLT	AMPS	SPD.	ROT.	TYPE	ENCL.	BEAR.	BODY	MNT.	SHAFT	CAP	FRM.
1/10	3450	115	0.70	1	CCW	PSC	OPEN	SLV.	6.50	FLANGE	4" BLOWER	4/370 INC.	3.3

CROSS REFERENCE: DUCANE, LENNOX, AIR-FLO 20054001, 20000101



FB-RFB598 3.3" DIA., FLUE EXHAUST BLOWER
ALLTEMP / ROTOM

QTY - 1 \$232.49
P/N FB-RFB598

HP	RPM	VOLT	AMPS	SPD.	ROT.	TYPE	ENCL.	BEAR.	BODY	MNT.	SHAFT	CAP	FRM.
1/18	3400	230	0.97	1	CW	SP	OPEN	SLV.	-	-	-	-	3.3

CROSS REFERENCE 7021-12416, 7021-9115 MODINE 5H73598-2



FB-RFB655 3.3" DIA., FLUE EXHAUST BLOWER
ALLTEMP / ROTOM

QTY - 2 \$190.80
P/N FB-RFB655

HP	RPM	VOLT	AMPS	SPD.	ROT.	TYPE	ENCL.	BEAR.	BODY	MNT.	SHAFT	FRM.
1/16	3430	230/460	1.20	1	CW	SP	OPEN	BALL	11.10	4 STUD	2.3X1/4	3.3



FB-RFB936 3.3" DIA., HIGH EFF. FURNACE BLOWER
ALLTEMP / ROTOM

QTY - 1 \$151.15
P/N FB-RFB936

HP	RPM	VOLT	AMPS	SPD.	ROT.	TYPE	ENCL.	BEAR.	BODY	MNT.	SHAFT	FRAME
1/60	2800	115	1.00	1	CCW	SP	OPEN	SLV.	6.40	FLANGE	4.5 WHEEL	3.3



HB-RB735 EXHAUST BLOWER
ALLTEMP / ROTOM

QTY - 1 \$148.10
P/N HB-RB735

CFM	RPM	VOLT	AMPS	SPD.	ROT.	TYPE	ENCL.	BEAR.	HP	A DIM.	C DIM.	FRAME
60	1500	115	0.36	1	CCW	SP	OPEN	SLV.	1/125	5.70	4.5" BLOWER	3.3

CROSS REFERENCE: HUNTER, VALOR, NAPOLEON, FASCO 7063-7736



R7-RB2 EXHAUST BLOWER
ALLTEMP / ROTOM

QTY - 1 \$157.07
P/N R7-RB2

CFM	RPM	VOLT	AMPS	SPD.	ROT.	TYPE	ENCL.	BEAR.	HP	A DIM.	C DIM.	FRAME	MNT.
100	1550	115	0.35	1	CW	SP	OPEN	SLV.	1/150	7.50	BLOWER	3.3	FLANGE

CROSS REFERENCE: FRANKLIN 76002, 80978, ELECTROHOME EB2



R7-RB24 EXHAUST BLOWER
ALLTEMP / ROTOM

QTY - 1 \$48.65
P/N R7-RB24

CFM	RPM	VOLT	AMPS	SPD.	ROT.	TYPE	ENCL.	BEAR.	HP	A DIM.	C DIM.	FRAME
116	1400	115	0.65	1	CW	SP	TE	SLV.	1/90	1.00	BLOWER	3.3

CROSS REFERENCE: REVERSOMATIC REPLACEMENT B100 - K100



R7-RB25 CFM-125, EXHAUST BLOWER
ALLTEMP / ROTOM

QTY - 1 \$71.91
P/N R7-RB25

HP	RPM	VOLT	AMPS	SPD.	ROT.	TYPE	ENCL.	BEAR.	BODY	MNT.	SHAFT	FRAME
1/40	1550	115	1.10	1	CW	SP	TE	SLV.	4.00	3 PT	BLOWER	3.3

CROSS REFERENCE: REVERSOMATIC K100



R7-RB26 EXHAUST BLOWER
ALLTEMP / ROTOM

QTY - 1 \$61.92
P/N R7-RB26

CFM	RPM	VOLT	AMPS	SPD.	ROT.	TYPE	ENCL.	BEAR.	HP	A DIM.	C DIM.	FRAME
141	1550	115	0.70	1	CW	SP	TE	SLV.	1/75	11.10	BLOWER	3.3

CROSS REFERENCE: REVERSOMATIC REPLACEMENT QK100



R7-RB28 EXHAUST BLOWER

ALLTEMP / ROTOM

QTY - 1 **\$74.38**
P/N R7-RB28

CFM	RPM	VOLT	AMPS	SPD.	ROT.	TYPE	ENCL.	BEAR.	HP	A DIM.	C DIM.	FRAME
200	1550	115	1.45	1	CW	SP	TE	SLV.	1/20	1.00	BLOWER	3.3

CROSS REFERENCE: REVERSOMATIC REPLACEMENT BK100



R7-RB29 EXHAUST BLOWER

ALLTEMP / ROTOM

QTY - 1 **\$120.84**
P/N R7-RB29

CFM	RPM	VOLT	AMPS	SPD.	ROT.	TYPE	ENCL.	BEAR.	HP	A DIM.	C DIM.	FRAME
268	1550	115	1.30	1	CCW	SP	OPEN	SLV.	1/35	3.80	BLOWER	4.1

CROSS REFERENCE: REVERSOMATIC REPLACEMENT



R7-RB30 EXHAUST BLOWER

ALLTEMP / ROTOM

QTY - 1 **\$116.87**
P/N R7-RB30

CFM	RPM	VOLT	AMPS	SPD.	ROT.	TYPE	ENCL.	BEAR.	HP	A DIM.	C DIM.	FRAME
268	1550	115	1.30	1	CW	SP	OPEN	SLV.	1/35	3.8	BLOWER	4.1

CROSS REFERENCE: REVERSOMATIC REPLACEMENT DK260 - DB200



R7-RB66 TANGENTIAL BLOWER ONLY

ALLTEMP / ROTOM

QTY - 1 **\$80.96**
P/N R7-RB66

CFM	RPM	VOLT	AMPS	SPD.	ROT.	TYPE	ENCL.	BEAR.	A DIM.	MNT.	C DIM.	FRAME
100	2100	115	.40	1	CW	SP	OPEN	SLV.	8.00	FLANGE	4.7 OPEN.	SKEL

CROSS REFERENCE: UZY3 SECURITY



R7-RB68 TANGENTIAL BLOWER W/PLATE & KIT

ALLTEMP / ROTOM

QTY - 1 **\$165.13**
P/N R7-RB68

CFM	RPM	VOLT	AMPS	SPD.	ROT.	TYPE	ENCL.	BEAR.	MNT.	A DIM.	C DIM.	FRAME
130	1250	115	0.60	1	CW	SP	OPEN	SLV.	FLANGE	12.90	9.5 OPN.	SKEL

CROSS REFERENCE: HUNTER 770 W/VAR SPD CTRL, FS, MNT BRKT



R7-RFB391 3.3" DIA., HIGH EFF. FLUE EXHAUST
ALLTEMP / ROTOM

QTY - 1 **\$95.20**
P/N R7-RFB391

HP	RPM	VOLT	AMPS	SPD.	ROT.	TYPE	ENCL.	BEAR.	BODY	MNT.	SHAFT	FRAME
1/25	3200	115	1.30	1	CCW	SP	OPEN	SLV.	6.00	FLANGE	BLOWER	3.3

CROSS REFERENCE: COLEMAN DORNBACK 7021-6759, 7021-5478



R7-RFB241 FLUE EXHAUST BLOWER
ALLTEMP / ROTOM

QTY - 1 **\$96.77**
P/N R7-RFB241

HP	RPM	VOLT	AMPS	SPD.	ROT.	TYPE	ENCL.	BEAR.	BODY	MNT.	SHAFT	FRAME
1/20	3400	120	1.71	1	CCW	SP	OPEN	SLV.	6.30	FLANGE	BLOWER	SKEL

CROSS REFERENCE: RHEEM-RUUB, WEATHER KING 70-24157-03, 70-22838-02



W8
FASCO

QTY - 2 **\$95.17**
P/N W8-FAS

HP	RPM	VOLT	AMPS	ROT.	TYPE	SPD.	BEARING	DIA
1/25	3200	115	1.3	CW	SP	1	SLEEVE	3.3

CROSS REFERENCE: GSW 7021-9756, 63172



W9
FASCO

QTY - 1 **\$113.74**
P/N W9-FAS

HP	RPM	VOLT	AMPS	ROT.	TYPE	SPD.	BEARING	DIA
1/60	3000	115	0.95	CW	SP	1	SLEEVE	3.3

CROSS REFERENCE: State Industries 7021-10548, 0012400500



W10
FASCO

QTY - 1 **\$197.41**
P/N W10-FAS

HP	RPM	VOLT	AMPS	ROT.	TYPE	SPD.	BEARING	DIA
1/20	3400	115	1.8	CCW	SP	1	SLEEVE	3.3

CROSS REFERENCE: State Industries 7021-11086, 0012400540



CFD - BELT DRIVE FORWARD CURVE DUCT FAN
SOLER & PALAU

QTY - 1 \$285.00
P/N CFD10

Forward Curved Belt Driven Inline Duct Blowers is designed for supply, exhaust or duct return applications.

SIZE	MAX HP	CFM RANGE	MAX SP	AVG. SHIP WEIGHT (LBS)
10	1	400-2900	2-1/2"	82



CWD - WALL FAN 1PH 1221CFM
SOLER & PALAU

QTY - 1 \$622.50
P/N CWD09-MH1AS

Centrifugal Wall Mounted Exhauster Direct Drive Fans (CWD) are designed to exhaust air up to 3,360 CFM, with high static pressure capability up to 1".

CFM HIGH	BLADE SIZE	HZ	HP	MOTOR TYPE	PHASE	VOLT	DRIVE	RPM HIGH
1221	9"	60	1/4	ODP	1	115	DIRECT	1550



DBB - 6IN 300CFM DRYER BOOSTER
SOLER & PALAU

QTY - 2 \$124.50
P/N DBB-300

The DBB is designed specifically for the requirements of high rise en suite laundry rooms.

NOM. RPM	VOLT	MAX WATTS	MAX SP.	DUCT DIA.	CFM V STATIC PRESSURE (SP) INCHES WG								
					0"	0.125"	.25"	0.375"	0.5"	0.75"	1.0"	1.5"	2.0"
2600	120	159	3.1"	6"	317	300	293	290	267	255	227	174	120



PW - PRESSURE BLOWER LM 1 1/2HP
SOLER & PALAU

QTY - 1 \$250.80
P/N PW-11LMLD

MOTOR HP	BLOWER RPM	CFM V STATIC PRESSURE (SP) INCHES WG											
		0.25"	0.5"	1.0"	1.5"	2.0"	2.5"	3.0"	3.5"	4.0"	5.0"	6.0"	7.0"
1 1/2	3500	786	772	746	719	692	664	635	606	575	508	431	329



PW - PRESSURE BLOWER LM 3HP
SOLER & PALAU

QTY - 1 \$386.65
P/N PW-12LMLD

MOTOR HP	BLOWER RPM	CFM V STATIC PRESSURE (SP) INCHES WG													
		0.25"	0.5"	1.0"	1.5"	2.0"	2.5"	3.0"	3.5"	4.0"	5.0"	6.0"	7.0"	8.0"	9.0"
3	3500	1185	1171	1145	1117	1090	1062	1033	1004	974	911	842	765	672	549



S - 16IN WALL EXHAUST SHUTTER FAN
SOLER & PALAU

QTY - 3 \$262.20
P/N S16-V

BLADE DIA.	RPM	HP	VOLTS	AMPS	0.0"	0.10"	0.125"	0.25"	SOUND dbA	WEIGHT (lbs)
16"	1640	0.25	120/240	4.4/2.2	2582	2358	2275	1521	63	36



S - 18IN WALL EXHAUST SHUTTER FAN
SOLER & PALAU

QTY - 1 \$259.35
P/N S18-V

BLADE DIA.	RPM	HP	VOLTS	AMPS	0.0"	0.10"	0.125"	0.25"	SOUND dbA	WEIGHT (lbs)
18"	1640	0.33	120/240	5.4/2.7	3520	3349	3290	3088	72	45



SDB - DOWN BLAST BELT DRIVE EXHAUSTER
SOLER & PALAU

QTY - 1 \$337.00
P/N SDB06LMDS

The SDB belt drive fans are designed to exhaust air up to 15,583 CFM in high static pressure applications up to 1-3/4". The aluminum exterior provides an attractive appearance. Belt drive results in lower operating RPM and sound levels, making the Model SDB well suited to applications where quiet operation is important. *For specification table, see page 23*



SDBD - DOWN BLAST DIRECT DRIVE EXHAUSTER
SOLER & PALAU

QTY - 1 \$549.50
P/N SDBD12MM1AS

SDBD and SDBDe direct drive fans are designed to exhaust air up to 4,980 CFM, with high static pressure capability up to 1-1/2". The non-overloading backward inclined wheel with its higher static pressure capability makes these units suitable for either ducted or non-ducted applications. *For specification table, see page 24-25*



SDB - DOWNBLAST BELT DRIVE EXHAUSTER
SOLER & PALAU

QTY - 1 \$370.50
P/N SDB08LMDS

The SDB belt drive fans are designed to exhaust air up to 15,583 CFM in high static pressure applications up to 1-3/4". The aluminum exterior provides an attractive appearance. Belt drive results in lower operating RPM and sound levels, making the Model SDB well suited to applications where quiet operation is important. *For specification table, see page 26-27*



STXB - UPBLAST BELT DRIVE EXHAUSTER
SOLER & PALAU

QTY - 1 **\$391.88**
P/N STXB10RHULLMDS

The STXB and STXB-RHUL Upblast Belt Drive Centrifugal Roof/Sidewall Exhaust Fans are designed to exhaust air up to 16,958 CFM in high static pressure applications to 2-3/4". Belt drive results in lower operating RPM and sound levels, making the Model STXB well suited to applications where quiet operation is important. *For specification table, see page 28*



STXB - UPBLAST BELT DRIVE EXHAUSTER
SOLER & PALAU

QTY - 1 **\$704.33**
P/N STXB16RHULLMDS

The STXB and STXB-RHUL Upblast Belt Drive Centrifugal Roof/Sidewall Exhaust Fans are designed to exhaust air up to 16,958 CFM in high static pressure applications to 2-3/4". Belt drive results in lower operating RPM and sound levels, making the Model STXB well suited to applications where quiet operation is important. *For specification table, see page 29*



STXB - UPBLAST BELT DRIVE EXHAUSTER HP
SOLER & PALAU

QTY - 1 **\$972.50**
P/N STXB18RHULLMDS-HP

The STXB and STXB-RHUL Upblast Belt Drive Centrifugal Roof/Sidewall Exhaust Fans are designed to exhaust air up to 16,958 CFM in high static pressure applications to 2-3/4". Belt drive results in lower operating RPM and sound levels, making the Model STXB well suited to applications where quiet operation is important. *For specification table, see page 30*



STXD - DIRECT DRIVE UPBLAST ROOF FAN
SOLER & PALAU

QTY - 1 **\$739.50**
P/N STXD14RHULMM1AS

The STXB and STXB-RHUL Upblast Belt Drive Centrifugal Roof/Sidewall Exhaust Fans are designed to exhaust air up to 16,958 CFM in high static pressure applications to 2-3/4". Belt drive results in lower operating RPM and sound levels, making the Model STXB well suited to applications where quiet operation is important. *For specification table, see page 31-32*



SWF - 4IN SIDEWALL CENTRIFUGAL FAN 171CFM
SOLER & PALAU

QTY - 1 **\$150.00**
P/N SWF-100X

RPM	VOLTS	FREQUENCY	CURRENT	WATTS	CFM V STATIC PRESSURE (SP) INCHES WG								
					0"	0.125"	0.25"	0.375"	0.5"	0.75"	1.0"	1.25"	1.5"
2600	120	60 HZ	0.8 A	90	171	162	152	142	118	90	66	46	28

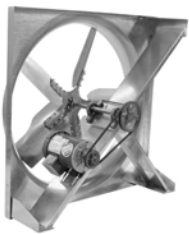


TD - 6IN INLINE MIXED FLO H-293 CFM L-218
SOLER & PALAU

QTY - 1 \$113.53

P/N TD-150

NOM. RPM	VOLT	MAX WATTS	SPD.	CFM V STATIC PRESSURE (SP) INCHES WG							MAX. SP	MAX OPERATING TEMP. (F)	WGT. (LBS)	DUCT DIA. INS.
				0"	0.125"	0.25"	0.375"	0.5"	0.75"	1.0"				
1709	120	54	LS	218	193	163	128	105	24	-	.8	140	4.4	6"
2289	120	65	HS	293	273	250	227	206	131	35	1.15	140	4.4	6"

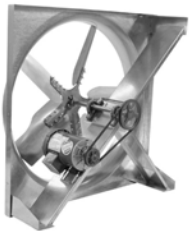


FAN BELT DRIVE WALL FAN NO MOTOR/DRIVE
SOLER & PALAU

QTY - 1 \$434.50

P/N LCE24LMDS

HP	MAX BHp	RPM	SONES @ 0 SP	CFM AT STATIC PRESSURE					
				0	1/10	1/8	1/4	3/8	1/2
1 1/2	1.82	1100	28.0	9774	9447	9361	8894	8347	7688



FAN BELT DRIVE WALL FAN NO MOTOR/DRIVE
SOLER & PALAU

QTY - 1 \$448.50

P/N LCE30LMDS

HP	MAX BHp	RPM	SONES @ 0 SP	CFM AT STATIC PRESSURE					
				0	1/10	1/8	1/4	3/8	1/2
1 1/2	1.78	815	24.0	13339	12773	12599	11609	10482	9013



FAN BLADE FOR LCE24 (24IN)
SOLER & PALAU

QTY - 2 \$124.55

P/N 100704

Soler & Palau fan blade for LCE Belt Drive Sidewall Propeller Exhaust/Supply Fans (24IN).



4YD95
ACKLANDS-GRAINGER / DAYTON

QTY - 67 \$0.98

P/N 4YD95

FAN FILTER GUARD ASSEMBLY

FAN SIZE (IN)	DIA. (IN)	DEPTH (IN)	MOUNTING EYE O.C. (IN)	MATERIAL
3-1/8	3-19/64	25/64	(4) 2-13/16	PLASTIC



CAR - 4IN INLINE BACK DRAFT DAMPER
SOLER & PALAU

QTY - 2 **\$11.50**
P/N CAR100

CAR100 4IN Inline Back Draft Damper for round ducts.



CAR - 6IN INLINE BACK DRAFT DAMPER
SOLER & PALAU

QTY - 2 **\$15.00**
P/N CAR150

CAR150 6IN Inline Back Draft Damper for round ducts.



CAR - 8IN INLINE BACK DRAFT DAMPER
SOLER & PALAU

QTY - 1 **\$22.00**
P/N CAR200

CAR200 8IN Inline Back Draft Damper for round ducts.



MAR - DUCT CONNECTOR RECT. TO 5IN ROUND
SOLER & PALAU

QTY - 2 **\$58.52**
P/N MAR-125

Soler & Palau MAR-125 Duct Connector, rectangular to round (5IN).



MAR - DUCT CONNECTOR RECT. TO 6IN ROUND
SOLER & PALAU

QTY - 1 **\$63.74**
P/N MAR-150

Soler & Palau MAR-150 Duct Connector, rectangular to round (6IN).



MBR - DUCT CONNECTOR FAN TO 5IN ROUND
SOLER & PALAU

QTY - 2 **\$18.00**
P/N MBR-125

Soler & Palau MBR-125 Duct Connector, fan to 5IN round, enable TD devices to connect in a series.



MBR - DUCT CONNECTOR FAN TO 6IN ROUND
SOLER & PALAU

QTY - 1 **\$21.00**
P/N MBR-150

Soler & Palau MBR-150 Duct Connector, fan to 6IN round, enable TD devices to connect in a series.



METAL GREASE TRAP (TXB-RHUL 24)
SOLER & PALAU

QTY - 1 **\$66.00**
P/N 90005891-B

Metal Grease Box for TXB Series rooftop exhaust fans.



METAL GREASE TRAP (TXB-RHUL 36)
SOLER & PALAU

QTY - 1 **\$46.00**
P/N 90005891-C

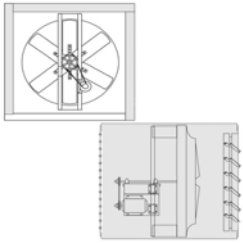
Metal Grease Box for TXB Series rooftop exhaust fans.



TXB SWITCH COVERS
SOLER & PALAU

QTY - 10 **\$5.85**
P/N 2501.2.5153

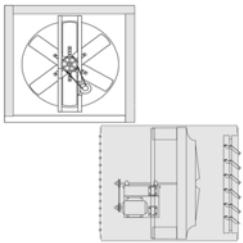
Switch covers for TXB Series rooftop exhaust fans.



WALL SLEEVE/SHUTTER/GUARD FOR LCE
SOLER & PALAU

QTY - 1 \$363.00
P/N WHPLCE24

Wall mounting provides an easy, economical installation. Belt driven fans provide large volumes of air at low fan speeds and low noise levels and afford quick, easy performance adjustments. All necessary accessories are available to meet any need or specification.



WALL SLEEVE/SHUTTER/GUARD FOR LCE
SOLER & PALAU

QTY - 1 \$396.00
P/N WHPLCE30

Wall mounting provides an easy, economical installation. Belt driven fans provide large volumes of air at low fan speeds and low noise levels and afford quick, easy performance adjustments. All necessary accessories are available to meet any need or specification.

SDB06LMDS

MOTOR HP	RPM		STATIC PRESSURE IN INCHES W.G.							0.875
			0	0.125	0.25	0.375	0.5	0.625	0.75	
1/4	700	CFM	131	41	-	-	-	-	-	-
		BHP	0.01	0.01	-	-	-	-	-	-
		SONES	1.2	1.2	-	-	-	-	-	-
1/4	850	CFM	159	104	-	-	-	-	-	-
		BHP	0.01	0.02	-	-	-	-	-	-
		SONES	2.1	2.0	-	-	-	-	-	-
1/4	900	CFM	169	118	-	-	-	-	-	-
		BHP	0.02	0.02	-	-	-	-	-	-
		SONES	2.4	2.3	-	-	-	-	-	-
1/4	1000	CFM	187	144	63	-	-	-	-	-
		BHP	0.02	0.03	0.03	-	-	-	-	-
		SONES	3.1	2.8	3.1	-	-	-	-	-
1/4	1100	CFM	206	167	112	-	-	-	-	-
		BHP	0.03	0.03	0.03	-	-	-	-	-
		SONES	3.9	3.6	3.8	-	-	-	-	-
1/4	1200	CFM	225	189	146	64	-	-	-	-
		BHP	0.04	0.04	0.04	0.04	-	-	-	-
		SONES	4.8	4.5	4.6	4.9	-	-	-	-
1/4	1300	CFM	244	212	174	116	-	-	-	-
		BHP	0.05	0.05	0.06	0.06	-	-	-	-
		SONES	5.8	5.5	5.4	5.7	-	-	-	-
1/4	1400	CFM	244	234	200	157	81	-	-	-
		BHP	0.07	0.07	0.07	0.07	0.07	-	-	-
		SONES	6.8	6.5	6.4	6.6	6.8	-	-	-
1/4	1500	CFM	281	255	223	188	133	56	-	-
		BHP	0.08	0.08	0.08	0.09	0.09	0.09	-	-
		SONES	7.9	7.6	7.4	7.5	7.7	7.9	-	-
1/4	1600	CFM	300	275	246	215	176	109	-	-
		BHP	0.10	0.10	0.10	0.10	0.11	0.11	-	-
		SONES	8.7	8.4	8.2	8.2	8.4	8.6	-	-
1/4	1700	CFM	319	295	268	241	208	160	92	-
		BHP	0.12	0.12	0.12	0.12	0.12	0.13	0.13	-
		SONES	9.5	9.2	8.9	9.0	9.1	9.2	9.4	-
1/4	1800	CFM	337	315	291	265	235	201	144	80
		BHP	0.14	0.14	0.14	0.14	0.15	0.15	0.15	0.15
		SONES	10.3	10.0	9.7	9.7	9.8	9.9	10.1	10.2
1/4	1900	CFM	356	335	313	288	262	232	193	132
		BHP	0.16	0.16	0.17	0.17	0.17	0.17	0.18	0.18
		SONES	11.1	10.8	10.5	10.4	10.5	10.6	10.8	10.9
1/4	2000	CFM	375	355	335	310	288	260	229	184
		BHP	0.19	0.19	0.19	0.19	0.20	0.20	0.20	0.21
		SONES	12.0	11.7	11.4	11.2	11.3	11.3	11.5	11.6

SDBD12MM1AS

MOTOR HP	RPM		STATIC PRESSURE IN INCHES W.G.										
			0	0.125	0.25	0.375	0.5	0.625	0.75	0.875	1	1.25	
SDBD 1/4HP 1075RPM	900	CFM	1000	856	673	-	-	-	-	-	-	-	-
		BHP	0.06	0.07	0.07	-	-	-	-	-	-	-	-
		SONES	6.0	5.4	4.9	-	-	-	-	-	-	-	-
	950	CFM	1055	920	756	479	-	-	-	-	-	-	-
		BHP	0.07	0.08	0.09	0.09	-	-	-	-	-	-	-
		SONES	6.6	6.0	5.5	5.3	-	-	-	-	-	-	-
	1000	CFM	1111	984	830	626	-	-	-	-	-	-	-
		BHP	0.08	0.09	0.10	0.10	-	-	-	-	-	-	-
		SONES	7.2	6.6	6.1	5.9	-	-	-	-	-	-	-
	1050	CFM	1167	1047	902	728	-	-	-	-	-	-	-
		BHP	0.08	0.09	0.10	0.10	-	-	-	-	-	-	-
		SONES	7.8	7.2	6.7	6.4	-	-	-	-	-	-	-
	1100	CFM	1222	1110	975	821	564	-	-	-	-	-	-
		BHP	0.11	0.12	0.13	0.13	0.13	-	-	-	-	-	-
		SONES	8.4	7.9	7.3	7.0	6.9	-	-	-	-	-	-
	1150	CFM	1281	1176	1050	909	719	-	-	-	-	-	-
		BHP	0.13	0.14	0.15	0.15	0.16	-	-	-	-	-	-
		SONES	9.1	8.5	8.0	7.5	7.5	-	-	-	-	-	-
SDBD 1/2HP 1625RPM	1200	CFM	1331	1101	1108	971	805	524	-	-	-	-	
		BHP	0.10	0.13	0.13	0.14	0.14	0.14	-	-	-	-	
		SONES	9.0	8.6	8.3	8.0	8.0	8.0	-	-	-	-	
	1250	CFM	1386	1124	1175	1047	897	702	-	-	-	-	
		BHP	0.11	0.15	0.15	0.15	0.16	0.16	-	-	-	-	
		SONES	9.6	9.2	8.9	8.6	8.5	8.6	-	-	-	-	
	1300	CFM	1442	1151	1240	1121	983	822	514	-	-	-	
		BHP	0.13	0.17	0.16	0.17	0.18	0.18	0.17	-	-	-	
		SONES	10.3	9.9	9.6	9.3	9.0	9.1	9.2	-	-	-	
	1350	CFM	1497	1182	1304	1193	1065	916	707	-	-	-	
		BHP	0.14	0.19	0.18	0.19	0.20	0.20	0.20	-	-	-	
		SONES	10.9	10.5	10.2	10.0	9.6	9.7	9.8	-	-	-	
	1400	CFM	1553	1215	1366	1263	1143	1007	850	539	-	-	
		BHP	0.16	0.21	0.20	0.21	0.22	0.23	0.23	0.21	-	-	
		SONES	11.6	11.2	10.9	10.6	10.3	10.3	10.4	10.5	-	-	
	1450	CFM	1608	1252	1428	1331	1219	1093	949	735	-	-	
		BHP	0.18	0.24	0.22	0.23	0.24	0.25	0.25	0.25	-	-	
		SONES	12.3	11.9	11.6	11.3	11.0	10.8	10.9	11.1	-	-	
1500	CFM	1664	1294	1474	1398	1293	1175	1043	890	589	-		
	BHP	0.20	0.26	0.24	0.25	0.26	0.27	0.28	0.28	0.26	-		
	SONES	13.0	12.6	12.3	12.0	11.7	11.5	11.6	11.7	11.8	-		
1550	CFM	1719	1333	1495	1464	1365	1254	1132	995	785	-		
	BHP	0.22	0.29	0.27	0.28	0.29	0.30	0.31	0.31	0.30	-		
	SONES	13.7	13.3	12.9	12.7	12.4	12.1	12.1	12.2	12.3	-		

SDBD12MM1AS

MOTOR HP	RPM		STATIC PRESSURE IN INCHES W.G.									
			0	0.125	0.25	0.375	0.5	0.625	0.75	0.875	1	1.25
SDBD 1/2HP 1625RPM	1600	CFM	1774	1377	1515	1529	1435	1331	1217	1089	942	-
		BHP	0.24	0.32	0.30	0.30	0.31	0.32	0.33	0.34	0.34	-
		SONES	14.4	14.0	13.6	13.3	13.0	12.8	12.6	12.7	12.8	-
	1650	CFM	1830	1424	1536	1592	1504	1406	1298	1180	1051	-
		BHP	0.26	0.35	0.34	0.33	0.34	0.35	0.36	0.37	0.37	-
		SONES	15.1	14.7	14.3	14.0	13.7	13.4	13.2	13.2	13.3	-
	1700	CFM	1902	1486	1565	1674	1592	1500	1401	1292	1173	811
		BHP	0.29	0.39	0.38	0.36	0.38	0.39	0.40	0.41	0.41	0.41
		SONES	15.9	15.4	15.0	14.7	14.4	14.1	13.8	13.7	13.9	14.1

SDBD08MM1AS

MOTOR HP	RPM		STATIC PRESSURE IN INCHES W.G.								
			0	0.125	0.25	0.375	0.5	0.625	0.75	0.875	
SDBD 1/25HP 1050RPM	700	CFM	361	187	-	-	-	-	-	-	-
		BHP	0.01	0.01	-	-	-	-	-	-	-
		SONES	2.3	1.5	-	-	-	-	-	-	-
	850	CFM	438	325	-	-	-	-	-	-	-
		BHP	0.01	0.01	-	-	-	-	-	-	-
		SONES	3.5	2.9	-	-	-	-	-	-	-
	1000	CFM	515	424	249	-	-	-	-	-	-
		BHP	0.02	0.02	0.02	-	-	-	-	-	-
		SONES	5	4.8	3.8	-	-	-	-	-	-
	1150	CFM	592	514	421	206	-	-	-	-	-
		BHP	0.03	0.03	0.03	0.03	-	-	-	-	-
		SONES	6.7	6.5	5.6	5	-	-	-	-	-
SDBD 1/10HP 1550RPM	1200	CFM	627	538	432	288	-	-	-	-	
		BHP	0.01	0.02	0.03	0.03	-	-	-	-	
		SONES	6	5.6	5.4	5	-	-	-	-	
	1250	CFM	653	568	470	348	-	-	-	-	
		BHP	0.01	0.02	0.03	0.04	-	-	-	-	
		SONES	6.5	6.1	5.9	5.5	-	-	-	-	
	1300	CFM	679	598	507	396	-	-	-	-	
		BHP	0.01	0.03	0.04	0.04	-	-	-	-	
		SONES	7.1	6.6	6.4	6.1	-	-	-	-	
	1350	CFM	705	627	543	437	284	-	-	-	
		BHP	0.02	0.03	0.04	0.04	0.04	-	-	-	
		SONES	7.6	7.1	6.9	6.6	6.3	-	-	-	
	1400	CFM	731	657	576	476	351	-	-	-	
		BHP	0.02	0.03	0.04	0.05	0.05	-	-	-	
		SONES	8.2	7.7	7.4	7.2	6.8	-	-	-	
	1450	CFM	757	687	609	514	409	-	-	-	
		BHP	0.02	0.04	0.05	0.05	0.06	-	-	-	
		SONES	8.8	8.3	7.9	7.8	7.4	-	-	-	
	1500	CFM	783	716	640	552	456	304	-	-	
		BHP	0.02	0.04	0.05	0.06	0.06	0.05	-	-	
		SONES	9.5	8.9	8.5	8.4	8	7.7	-	-	
	1550	CFM	809	746	672	589	497	373	-	-	
		BHP	0.03	0.04	0.05	0.06	0.07	0.07	-	-	
		SONES	10	9.3	8.9	8.9	8.5	8.2	-	-	
1600	CFM	835	775	702	626	537	434	265	-		
	BHP	0.03	0.04	0.05	0.07	0.07	0.08	0.06	-		
	SONES	10.4	9.8	9.3	9.3	9	8.7	8.4	-		
1650	CFM	862	804	733	662	576	485	343	-		
	BHP	0.03	0.05	0.06	0.08	0.08	0.08	0.07	-		
	SONES	10.9	10.3	9.7	9.7	9.5	9.2	8.9	-		

SDBD08MM1AS

MOTOR HP	RPM		STATIC PRESSURE IN INCHES W.G.							
			0	0.125	0.25	0.375	0.5	0.625	0.75	0.875
SDBD 1/4HP 1625RPM	1700	CFM	867	814	761	705	630	557	441	-
		BHP	0.07	0.08	0.09	0.1	0.11	0.11	0.11	-
		SONES	11	10.8	10.5	10.3	10	9.9	9.9	-
	1750	CFM	892	842	789	738	667	595	505	297
		BHP	0.08	0.09	0.1	0.11	0.12	0.12	0.12	0.1
		SONES	11.5	11.3	11.1	10.8	10.6	10.4	10.4	11

STXB10RHULLMDS

MOTOR HP	RPM		STATIC PRESSURE IN INCHES W.G.								
			0	0.125	0.25	0.375	0.5	0.625	0.75	0.875	1
1/4	650	CFM	545	348	-	-	-	-	-	-	-
		BHP	0.01	0.01	-	-	-	-	-	-	-
		SONES	2.6	2.0	-	-	-	-	-	-	-
1/4	750	CFM	629	468	-	-	-	-	-	-	-
		BHP	0.02	0.03	-	-	-	-	-	-	-
		SONES	3.6	2.9	-	-	-	-	-	-	-
1/4	850	CFM	713	575	384	-	-	-	-	-	-
		BHP	0.03	0.04	0.04	-	-	-	-	-	-
		SONES	4.6	3.9	3.6	-	-	-	-	-	-
1/4	950	CFM	797	675	533	-	-	-	-	-	-
		BHP	0.04	0.05	0.05	-	-	-	-	-	-
		SONES	5.5	4.9	4.5	-	-	-	-	-	-
1/4	1050	CFM	881	771	651	488	-	-	-	-	-
		BHP	0.06	0.06	0.07	0.07	-	-	-	-	-
		SONES	6.5	6.0	5.6	5.4	-	-	-	-	-
1/4	1150	CFM	965	864	758	636	-	-	-	-	-
		BHP	0.07	0.08	0.09	0.10	-	-	-	-	-
		SONES	7.6	7.2	6.7	6.5	-	-	-	-	-
1/4	1250	CFM	1049	958	862	757	628	-	-	-	-
		BHP	0.09	0.10	0.11	0.12	0.12	-	-	-	-
		SONES	8.9	8.5	8.0	7.7	7.5	-	-	-	-
1/4	1350	CFM	1132	1050	961	866	762	619	-	-	-
		BHP	0.12	0.13	0.14	0.15	0.15	0.16	-	-	-
		SONES	10.2	9.9	9.4	8.9	8.8	8.7	-	-	-
1/4	1450	CFM	1216	1141	1057	973	881	774	610	-	-
		BHP	0.14	0.16	0.17	0.18	0.19	0.19	0.19	-	-
		SONES	11.7	11.4	10.9	10.4	10.2	10.0	9.9	-	-
1/4	1550	CFM	1300	1230	1151	1076	991	902	797	615	-
		BHP	0.18	0.19	0.20	0.21	0.22	0.23	0.24	0.23	-
		SONES	13.1	12.7	12.3	11.9	11.5	11.3	11.2	11.0	-
1/3	1650	CFM	1384	1319	1245	1174	1098	1018	930	825	638
		BHP	0.21	0.23	0.24	0.25	0.26	0.27	0.28	0.29	0.28
		SONES	14.3	13.9	13.5	13.1	12.6	12.4	12.3	12.1	12.0
1/3	1750	CFM	1468	1407	1338	1270	1201	1126	1050	962	860
		BHP	0.25	0.27	0.28	0.29	0.30	0.32	0.33	0.34	0.34
		SONES	15.5	15.1	14.8	14.4	13.9	13.5	13.4	13.3	13.2

STXB16RHULLMDS

MOTOR HP	RPM		STATIC PRESSURE IN INCHES W.G.										
			0	0.125	0.25	0.375	0.5	0.625	0.75	0.875	1	1.25	1.5
1/4	700	CFM	1988	1762	-	-	-	-	-	-	-	-	-
		BHP	0.09	0.10	0.12	0.12	-	-	-	-	-	-	-
		SONES	6.8	6.3	5.3	4.2	-	-	-	-	-	-	-
1/4	750	CFM	2130	1920	1683	1363	-	-	-	-	-	-	-
		BHP	0.10	0.12	0.14	0.15	-	-	-	-	-	-	-
		SONES	8.0	7.6	6.6	5.3	-	-	-	-	-	-	-
1/4	800	CFM	2272	2076	1863	1596	1006	-	-	-	-	-	-
		BHP	0.13	0.15	0.17	0.18	0.17	-	-	-	-	-	-
		SONES	8.7	8.3	7.5	6.4	5.3	-	-	-	-	-	-
1/4	850	CFM	2414	2231	2035	1801	1495	-	-	-	-	-	-
		BHP	0.15	0.17	0.20	0.22	0.22	-	-	-	-	-	-
		SONES	9.5	9.2	7.4	7.4	6.3	-	-	-	-	-	-
1/4	900	CFM	2555	2383	2201	1992	1740	1208	-	-	-	-	-
		BHP	0.18	0.20	0.23	0.25	0.26	0.24	-	-	-	-	-
		SONES	10.3	9.9	9.3	8.5	7.4	6.5	-	-	-	-	-
1/4	950	CFM	2697	2535	2364	2175	1952	1670	-	-	-	-	-
		BHP	0.21	0.24	0.26	0.29	0.30	0.31	-	-	-	-	-
		SONES	11.2	10.6	10.1	9.3	8.4	7.5	-	-	-	-	-
1/3	1000	CFM	2839	2685	2524	2352	2152	1917	1511	-	-	-	-
		BHP	0.25	0.27	0.30	0.33	0.35	0.36	0.35	-	-	-	-
		SONES	12.1	11.5	10.9	10.2	9.4	8.5	7.8	-	-	-	-
1/2	1050	CFM	2981	2835	2682	2522	2341	2132	1875	-	-	-	-
		BHP	0.29	0.32	0.34	0.37	0.39	0.41	0.42	-	-	-	-
		SONES	13.0	12.5	12.0	11.2	10.4	9.6	8.9	-	-	-	-
1/2	1100	CFM	3123	2984	2839	2688	2523	2335	2121	1822	-	-	-
		BHP	0.33	0.36	0.39	0.42	0.44	0.47	0.48	0.48	-	-	-
		SONES	13.9	13.4	13.0	12.3	11.5	10.8	10.0	9.3	-	-	-
3/4	1150	CFM	3265	3132	2994	2852	2699	2528	2334	2105	1687	-	-
		BHP	0.38	0.41	0.44	0.47	0.50	0.52	0.54	0.55	0.53	-	-
		SONES	14.9	14.4	14.0	13.4	12.8	12.2	11.3	10.6	9.9	-	-
3/4	1200	CFM	3407	3280	3148	3012	2871	2713	2539	2344	2103	-	-
		BHP	0.43	0.46	0.49	0.52	0.56	0.58	0.61	0.62	0.62	-	-
		SONES	15.9	15.5	15.1	14.7	14.1	13.5	12.8	11.9	11.2	-	-
3/4	1250	CFM	3549	3427	3301	3171	3038	2892	2732	2555	2355	-	-
		BHP	0.48	0.52	0.55	0.58	0.62	0.65	0.67	0.69	0.71	-	-
		SONES	17.0	16.8	16.5	16.2	15.5	14.9	14.3	13.4	12.6	-	-
1	1300	CFM	3691	3574	3453	3329	3202	3067	2919	2757	2579	2051	-
		BHP	0.54	0.58	0.61	0.65	0.68	0.72	0.75	0.77	0.79	0.78	-
		SONES	18.4	18.1	17.8	17.5	17.0	16.4	15.8	15.0	14.1	12.6	-
1	1350	CFM	3833	3720	3605	3485	3364	3238	3100	2950	2788	2394	-
		BHP	0.61	0.65	0.68	0.72	0.75	0.79	0.82	0.85	0.87	0.89	-
		SONES	19.8	19.5	19.2	18.9	18.4	17.8	17.3	16.6	15.7	14.0	-
1	1400	CFM	3975	3867	3755	3641	3524	3404	3276	3137	2988	2645	1953
		BHP	0.68	0.72	0.75	0.79	0.83	0.87	0.90	0.93	0.96	0.99	0.93
		SONES	21.1	20.9	20.7	20.4	20.1	19.4	18.8	18.2	17.4	15.7	14.1

STXB18RHULLMDS-HP

MOTOR HP	RPM		STATIC PRESSURE IN INCHES W.G.												
			0	0.125	0.25	0.375	0.5	0.625	0.75	0.875	1	1.25	14.5	1.75	2
1/4	600	CFM	2395	2112	1802	1306	-	-	-	-	-	-	-	-	-
		BHP	0.12	0.14	0.15	0.15	-	-	-	-	-	-	-	-	-
		SONES	7.3	6.0	5.1	4.5	-	-	-	-	-	-	-	-	-
1/4	700	CFM	2794	2550	2307	2011	1528	-	-	-	-	-	-	-	-
		BHP	0.19	0.21	0.23	0.25	0.24	-	-	-	-	-	-	-	-
		SONES	9.1	8.1	7.4	6.8	6.3	-	-	-	-	-	-	-	-
1/2	800	CFM	3194	2979	2770	2543	2271	1836	-	-	-	-	-	-	-
		BHP	0.29	0.31	0.34	0.35	0.37	0.36	-	-	-	-	-	-	-
		SONES	11.2	10.5	9.9	9.3	8.8	8.2	-	-	-	-	-	-	-
1/2	900	CFM	3593	3402	3213	3027	2816	2574	2203	1876	-	-	-	-	-
		BHP	0.41	0.44	0.46	0.49	0.51	0.52	0.51	0.49	-	-	-	-	-
		SONES	13.5	12.9	12.4	11.8	11.2	10.6	10.1	9.7	-	-	-	-	-
3/4	1000	CFM	3992	3820	3650	3483	3311	3116	2903	2593	2215	-	-	-	-
		BHP	0.56	0.59	0.62	0.65	0.68	0.70	0.71	0.71	0.69	-	-	-	-
		SONES	15.5	15.1	14.6	14.1	13.6	13.1	12.6	12.1	11.6	-	-	-	-
1	1100	CFM	4391	4235	4079	3925	3775	3615	3437	3249	3000	2399	-	-	-
		BHP	0.75	0.78	0.82	0.85	0.88	0.91	0.93	0.95	0.95	0.91	-	-	-
		SONES	17.7	17.4	17.0	16.6	16.2	15.7	15.3	14.9	14.5	13.7	-	-	-
1-1/2	1200	CFM	4790	4647	4504	4362	4223	4084	3936	3773	3605	3135	2612	-	-
		BHP	0.97	1.01	1.05	1.08	1.12	1.15	1.18	1.20	1.22	1.23	1.19	-	-
		SONES	19.9	19.6	19.4	19.1	18.8	18.4	18.0	17.6	17.2	16.6	15.9	-	-
2	1300	CFM	5189	5057	4925	4794	4664	4536	4407	4270	4121	3800	3323	2834	-
		BHP	1.23	1.27	1.31	1.36	1.39	1.43	1.46	1.49	1.52	1.57	1.56	1.51	-
		SONES	22.8	22.5	22.2	21.9	21.6	21.2	20.8	20.4	20.0	19.4	18.7	18.2	-
2	1400	CFM	5589	5466	5343	5221	5100	4979	4862	4741	4614	4332	4022	3557	3056
		BHP	1.54	1.58	1.63	1.67	1.72	1.76	1.79	1.83	1.86	1.92	1.96	1.95	1.88
		SONES	25.7	25.4	25.2	24.9	24.6	24.4	24.0	23.6	23.2	22.5	21.8	21.2	20.5

STXD14RHULMM1AS

MOTOR HP	RPM		STATIC PRESSURE IN INCHES W.G.											
			0	0.125	0.25	0.375	0.5	0.625	0.75	0.875	1	1.25	1.5	
STXD 1/4HP 1075RPM	750	CFM	1479	1246	930	-	-	-	-	-	-	-	-	-
		BHP	0.07	0.08	0.09	-	-	-	-	-	-	-	-	-
		SONES	6.4	5.7	5.1	-	-	-	-	-	-	-	-	-
	850	CFM	1677	1481	1240	868	-	-	-	-	-	-	-	-
		BHP	0.10	0.12	0.12	0.12	-	-	-	-	-	-	-	-
		SONES	8.1	7.4	6.7	6.3	-	-	-	-	-	-	-	-
	950	CFM	1874	1702	1500	1244	-	-	-	-	-	-	-	-
		BHP	0.14	0.16	0.17	0.17	-	-	-	-	-	-	-	-
		SONES	10.0	9.3	8.5	8.0	-	-	-	-	-	-	-	-
	1100	CFM	2148	1998	1830	1651	1411	1077	-	-	-	-	-	-
		BHP	0.21	0.23	0.25	0.26	0.26	0.25	-	-	-	-	-	-
		SONES	13.2	12.4	11.7	11.0	10.5	10.2	-	-	-	-	-	-
STXD 3/4HP 1650RPM	1150	CFM	2195	2076	1950	1808	1659	1475	1201	-	-	-	-	
		BHP	0.25	0.27	0.30	0.32	0.34	0.35	0.34	-	-	-	-	
		SONES	12.1	11.8	11.5	11.1	10.5	10.0	10.7	-	-	-	-	
	1200	CFM	2290	2177	2058	1923	1784	1625	1447	-	-	-	-	
		BHP	0.29	0.31	0.33	0.36	0.38	0.40	0.40	-	-	-	-	
		SONES	13.1	12.8	12.5	12.1	11.6	11.1	11.2	-	-	-	-	
	1250	CFM	2386	2277	2165	2037	1904	1762	1585	1354	-	-	-	
		BHP	0.32	0.35	0.37	0.40	0.42	0.44	0.45	0.44	-	-	-	
		SONES	14.0	13.7	13.5	13.2	12.6	12.2	11.7	12.5	-	-	-	
	1300	CFM	2481	2376	2269	2149	2022	1891	1738	1575	-	-	-	
		BHP	0.36	0.39	0.42	0.44	0.47	0.49	0.51	0.51	-	-	-	
		SONES	15.1	14.8	14.5	14.2	13.8	13.3	12.8	13.0	-	-	-	
	1350	CFM	2576	2476	2373	2260	2139	2015	1879	1712	1524	-	-	
		BHP	0.41	0.43	0.46	0.49	0.52	0.54	0.56	0.57	0.56	-	-	
		SONES	16.2	15.9	15.6	15.3	14.9	14.5	14.0	13.6	14.4	-	-	
	1400	CFM	2672	2575	2477	2370	2254	2135	2011	1865	1715	-	-	
		BHP	0.45	0.48	0.51	0.54	0.57	0.59	0.62	0.63	0.63	-	-	
		SONES	17.2	16.9	16.7	16.4	16.1	15.6	15.2	14.8	15.0	-	-	
	1450	CFM	2767	2674	2579	2478	2367	2253	2136	2007	1851	1252	-	
		BHP	0.50	0.53	0.56	0.59	0.62	0.65	0.68	0.70	0.71	0.63	-	
		SONES	18.3	18.0	17.7	17.5	17.2	16.8	16.4	16.0	15.6	17.2	-	
	1500	CFM	2863	2772	2681	2585	2479	2370	2258	2140	2003	1653	-	
		BHP	0.56	0.59	0.62	0.65	0.68	0.71	0.74	0.76	0.78	0.77	-	
		SONES	19.5	19.2	18.9	18.6	18.3	18.0	17.6	17.2	16.9	17.8	-	
1550	CFM	2958	2871	2782	2691	2590	2485	2377	2267	2145	1871	-		
	BHP	0.62	0.64	0.68	0.71	0.74	0.77	0.80	0.83	0.85	0.86	-		
	SONES	20.3	20.0	19.7	19.5	19.2	18.9	18.5	18.1	17.8	18.0	-		
1600	CFM	3054	2969	2883	2796	2700	2598	2495	2390	2279	2008	1481		
	BHP	0.68	0.71	0.74	0.77	0.81	0.84	0.87	0.90	0.93	0.95	0.88		
	SONES	21.2	21.0	20.7	20.5	20.2	19.9	19.5	19.1	18.7	18.1	19.9		

STXD14RHULMM1AS

MOTOR HP	RPM		STATIC PRESSURE IN INCHES W.G.										
			0	0.125	0.25	0.375	0.5	0.625	0.75	0.875	1	1.25	1.5
STXD 3/4HP 1650RPM	1650	CFM	3149	3067	2984	2900	2809	2711	2612	2510	2406	2159	1849
		BHP	0.74	0.77	0.81	0.84	0.87	0.91	0.94	0.97	1.00	1.04	1.03
		SONES	22.2	21.9	21.6	21.3	21.1	20.8	20.4	20.0	19.7	18.9	20.0
STXD 1HP 1725RPM	1725	CFM	3426	3352	3272	3188	3099	3002	2899	2794	2686	2448	2125
		BHP	0.65	0.67	0.69	0.72	0.76	0.79	0.81	0.83	0.86	0.89	0.89
		SONES	23.9	23.1	22.2	21.5	21.1	20.7	20.4	20.1	19.9	19.3	18.8