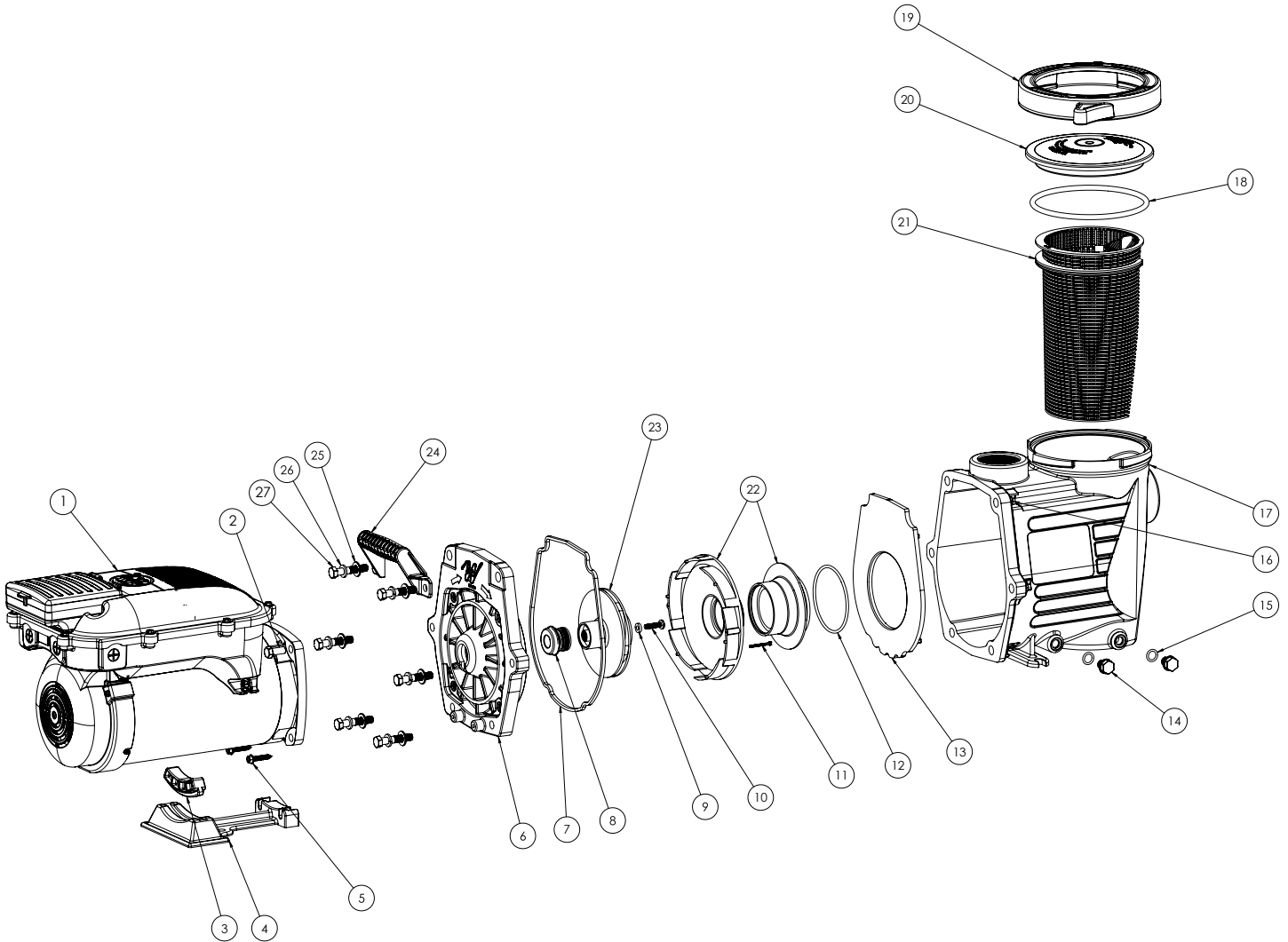


POWER DEFENDER 3.0 HP PUMP REPLACEMENT PARTS



Part No.	Qty	Description
1	-	1 Motor
2	819-0035	3 Bolt .375-16 X .875 Long
3	672-1350	1 Motor Support Supra Max
4	319-1500	1 Motor Base
5	819-0013	2 Screw Slot Hex Washer 1/4" X 1_1/4"
6	311-1450	1 Volute Faceplate
7	806-1400	1 Gasket, Face Plate
8	319-3080	1 Carbide Pump Seal Set
9	711-4300	1 SVL Gasket for Left Handed Screw
10	819-4360	1 Screw Phil. Pan Head Left Hand 1/4-20 x 1"
11	819-0018	2 #4-40 Uncs Bolt Schs
12	805-0238	1 O-Ring-238
13	319-1420	1 Diffuser Plate, Champion Pump
14	715-1200	2 3/8" Quarter Slot Plug (Sd Wet End)

Part No.	Qty	Description
15	805-0112	2 O-Ring-112
16	820-4280	6 Brass Insert, 3/8-16 Unc Champion II Housing
17	315-2410	1 Champion Pump Housing - 2" X 2" Npt
18	805-0436	1 O-Ring, 6" Trap Lid
19	319-3270	1 Lid, 6" Trap
20	319-3228	1 Lid, 6" Trap
21	319-1430	1 Basket & Extention Assy, Champion Pool Pump
22	310-7470	1 Diffuser Assy
23	310-7450	1 3 HP Impeller Assembly
24	319-1700	1 Handle, Champion Pump
25	820-0017	6 3/8" Washer Type B, Pool Pumps
26	820-0017-1	6 3/8" Washer, Split Lock
27	819-0016	6 3/8" - 16 X 2" Lg Hex Head