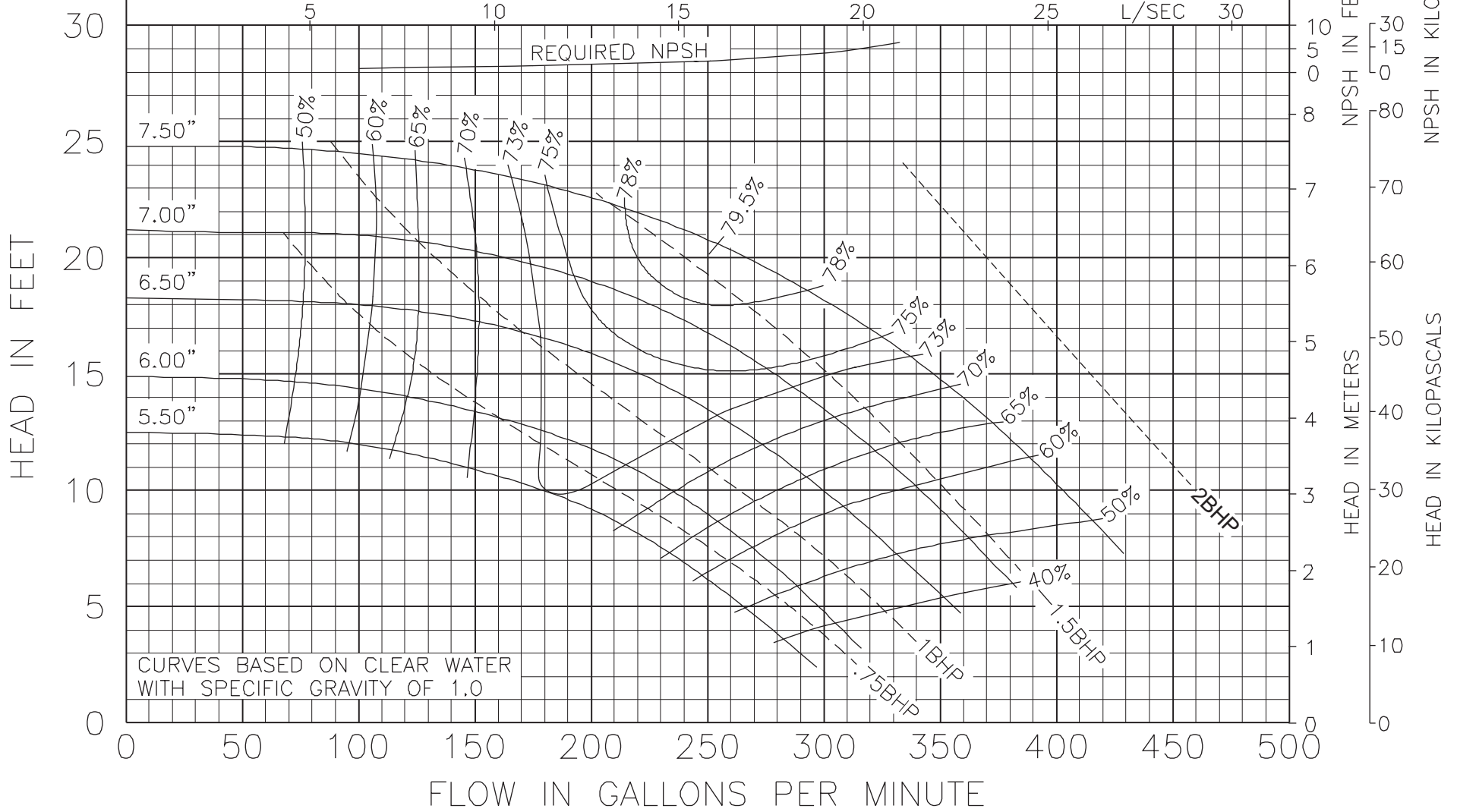




Model 4007
KV & KS Series

1160 RPM
October 23, 2000

Curve no. 1945
Min. Imp. Dia. 5.50"
Size 4 x 4 x 7

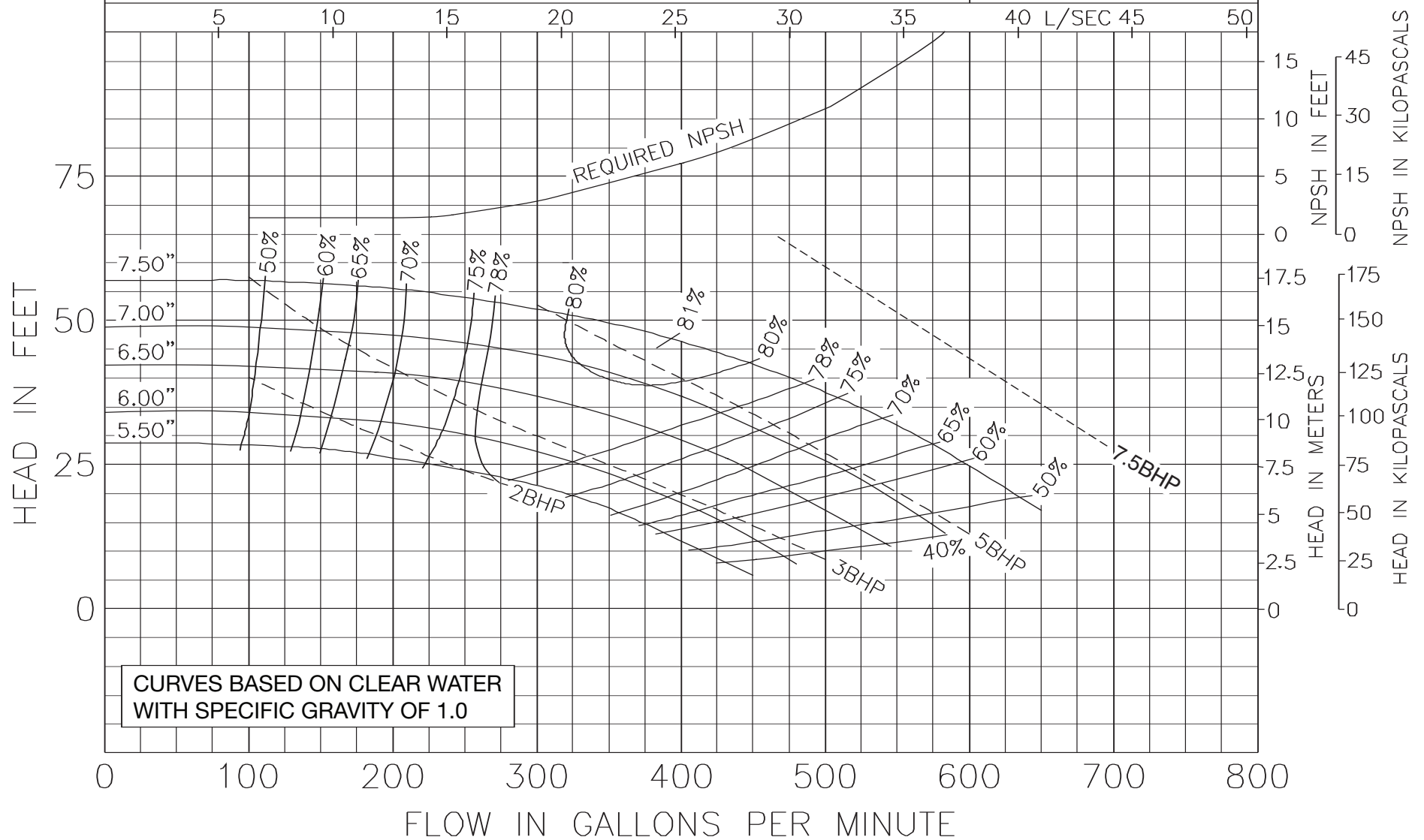




Model 4007
KV & KS Series

1760 RPM
MAY 1, 2010

Curve no. 1943
Min. Imp. Dia. 5.50
Size 4 x 4 x 7





Model 4007
KV & KS Series

3500 RPM
October 23, 2000

Curve no. 1944
Min. Imp. Dia. 5.50
Size 4 x 4 x 7

