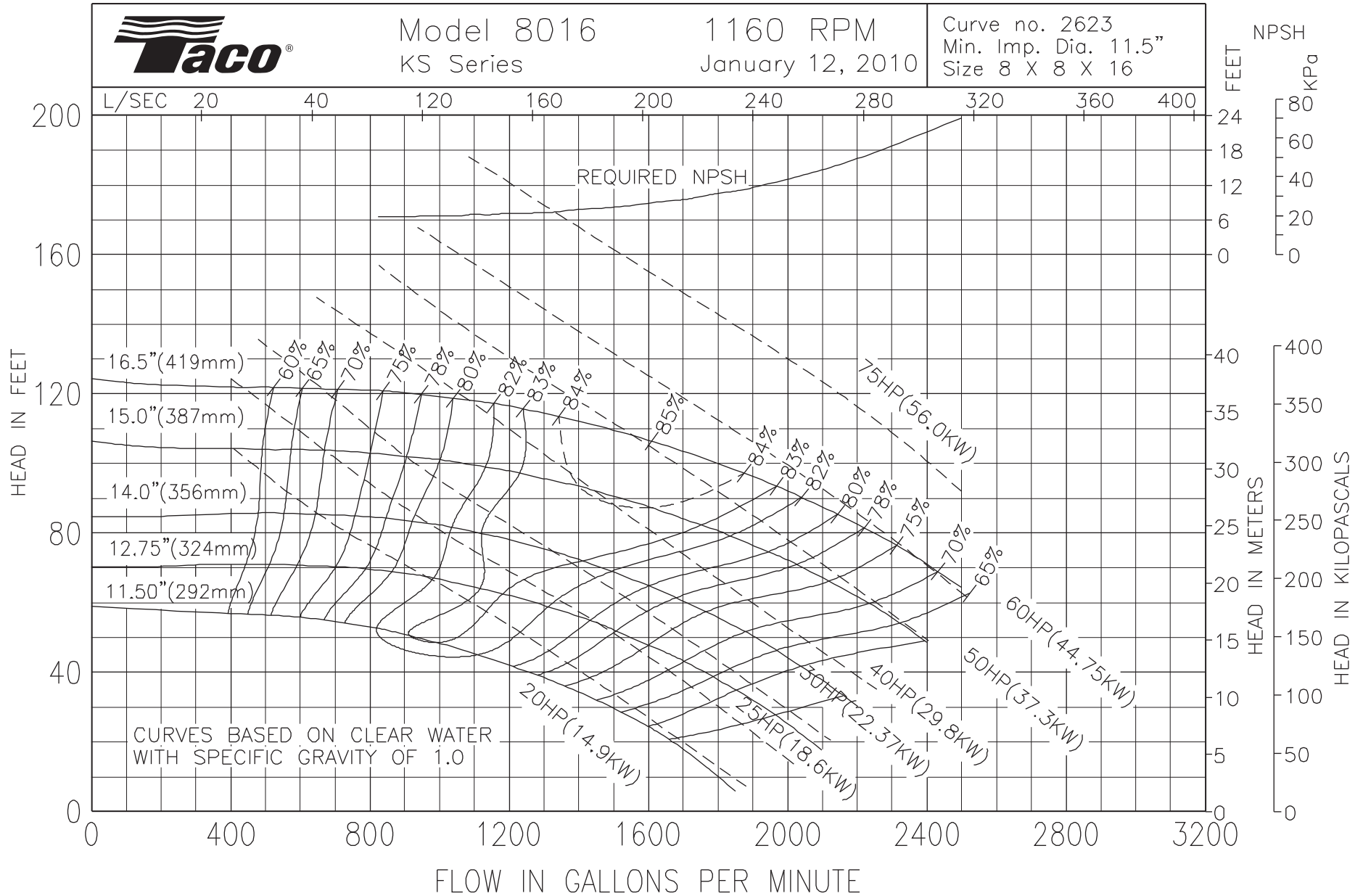




Model 8016
KS Series

1160 RPM
January 12, 2010

Curve no. 2623
Min. Imp. Dia. 11.5"
Size 8 X 8 X 16

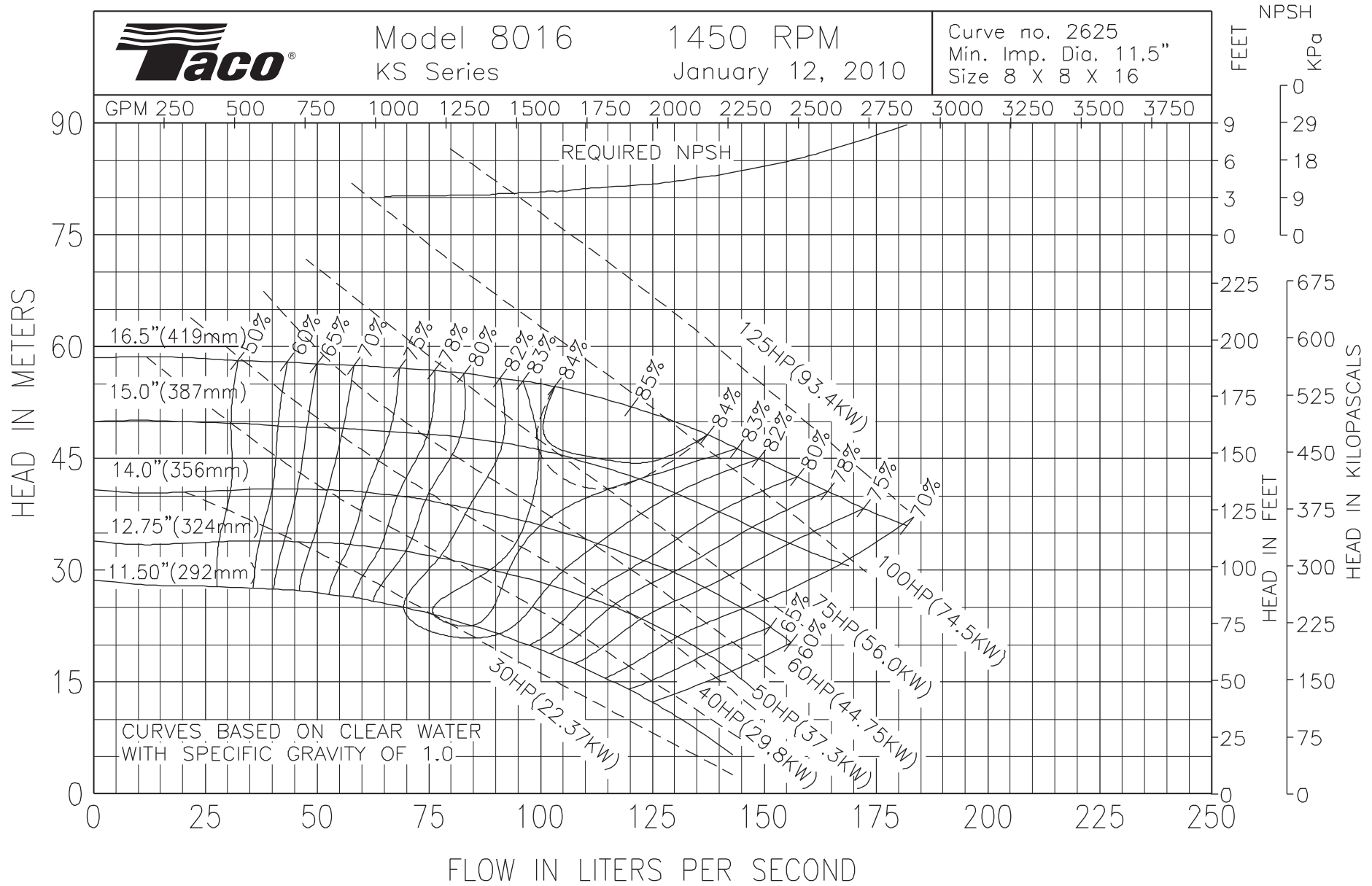




Model 8016
KS Series

1450 RPM
January 12, 2010

Curve no. 2625
Min. Imp. Dia. 11.5"
Size 8 X 8 X 16





Model 8016
KS Series

1760 RPM
January 12, 2010

Curve no. 2624
Min. Imp. Dia. 11.5"
Size 8 X 8 X 16

