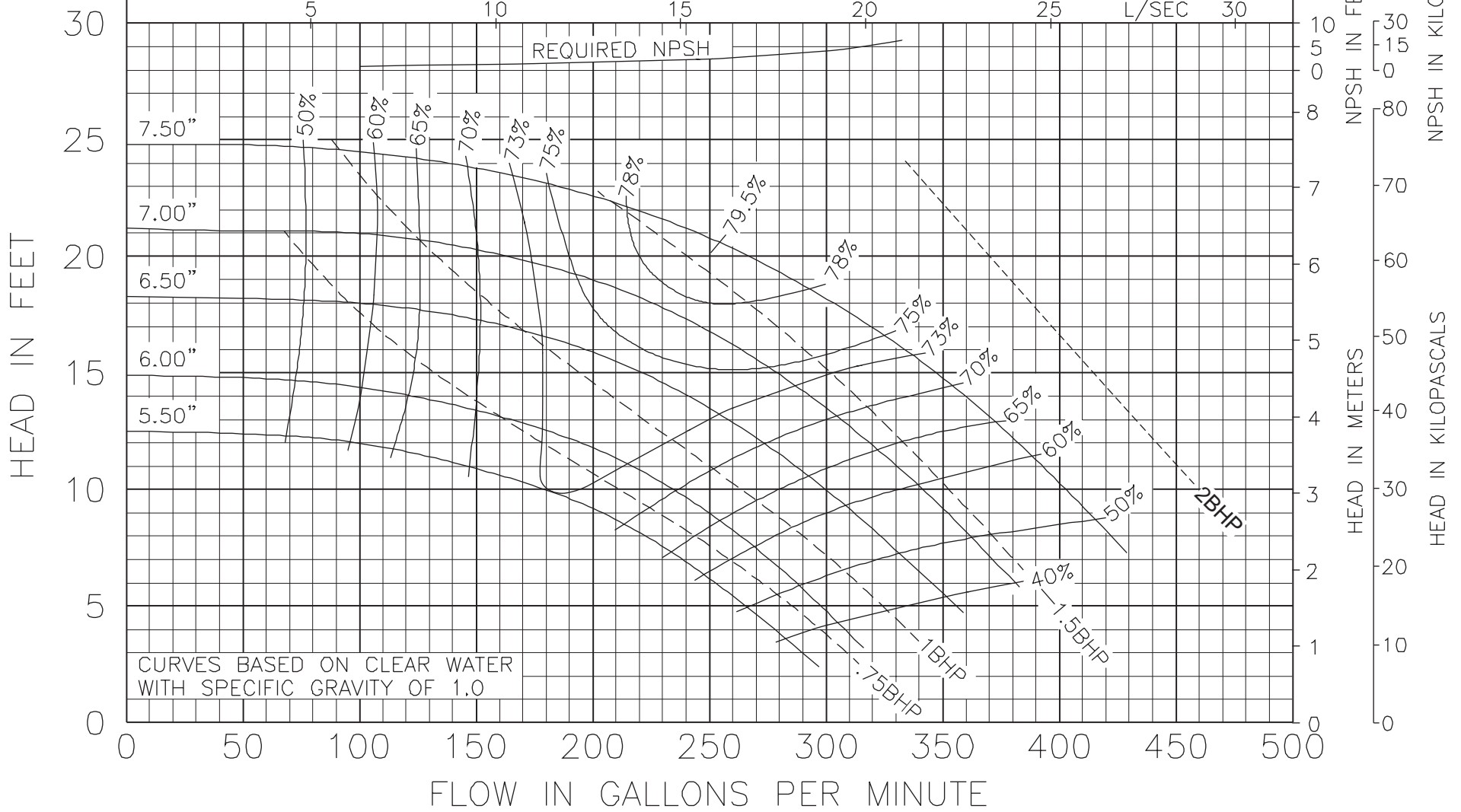




Model 4007
KV & KS Series

1160 RPM
October 23, 2000

Curve no. 1945
Min. Imp. Dia. 5.50"
Size 4 x 4 x 7

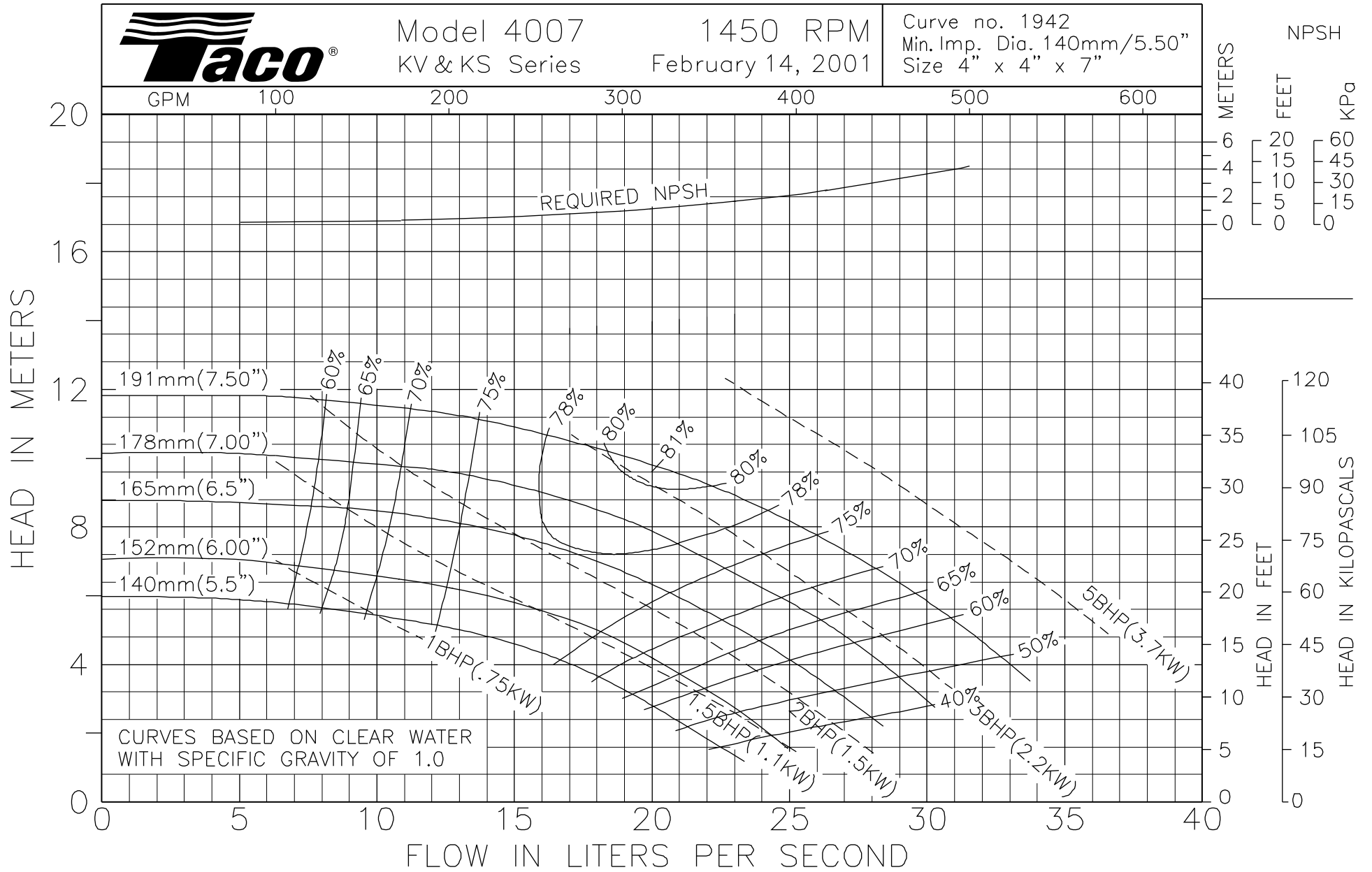




Model 4007
KV & KS Series

1450 RPM
February 14, 2001

Curve no. 1942
Min. Imp. Dia. 140mm/5.50"
Size 4" x 4" x 7"

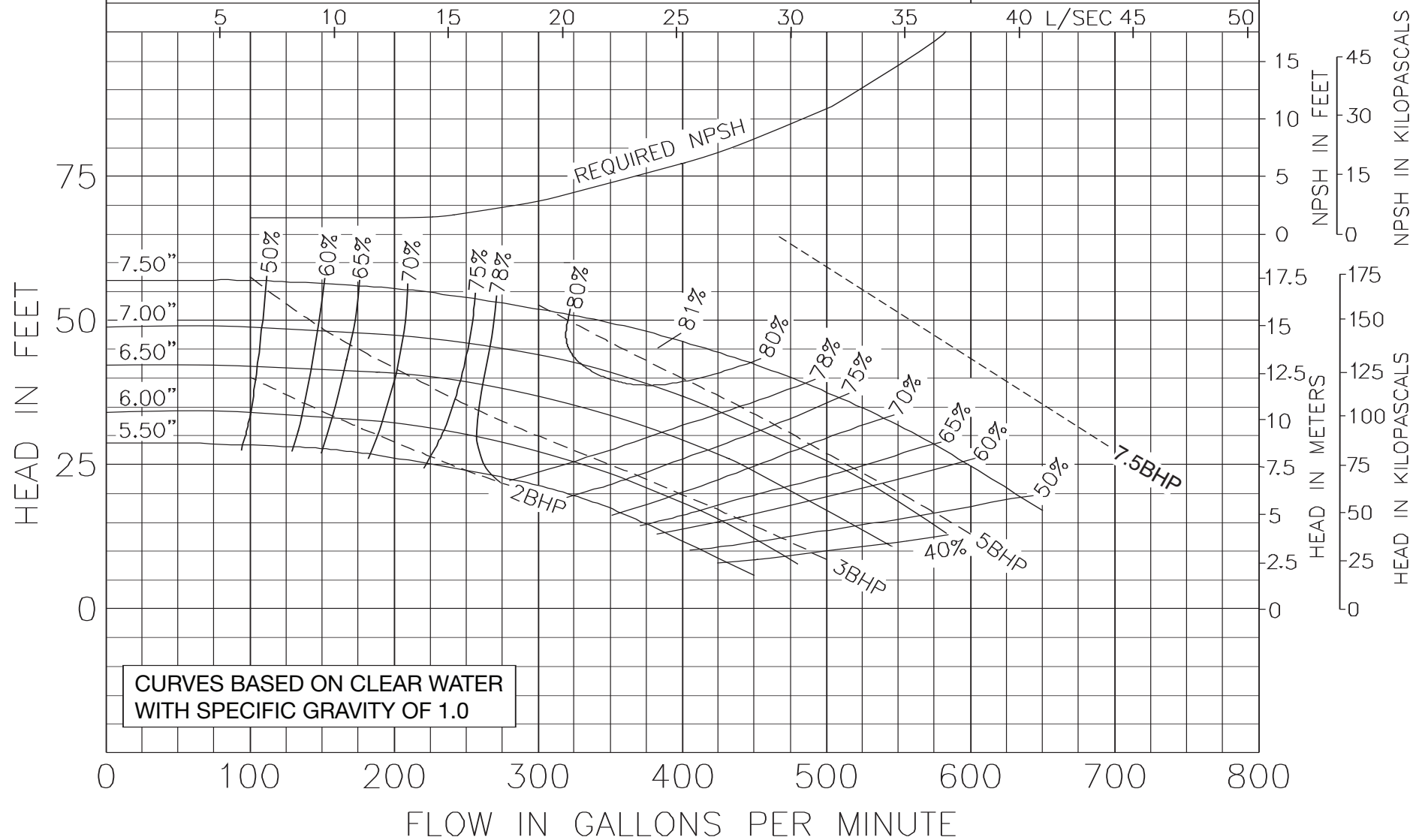




Model 4007
KV & KS Series

1760 RPM
MAY 1, 2010

Curve no. 1943
Min. Imp. Dia. 5.50
Size 4 x 4 x 7

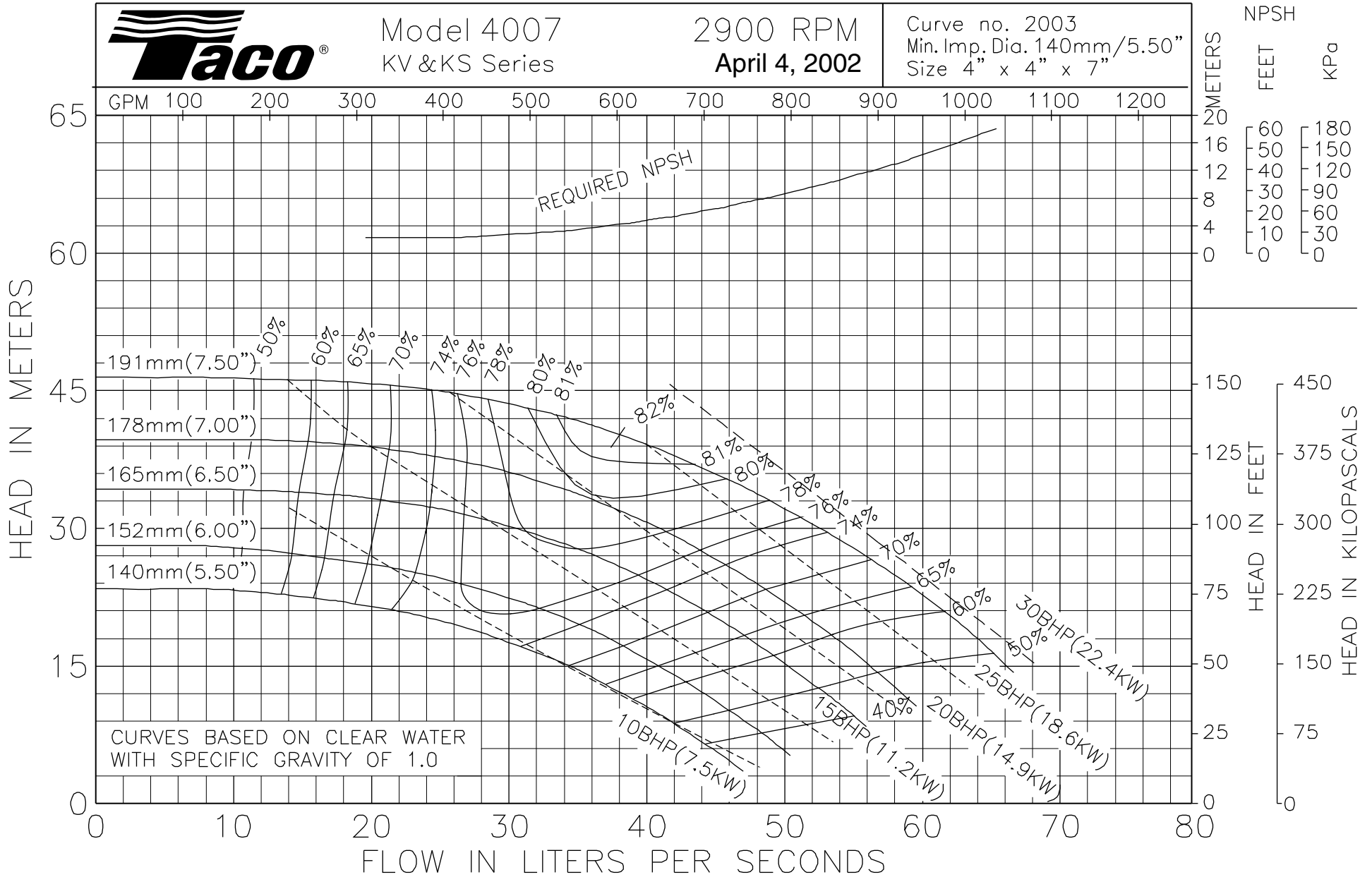




Model 4007
KV & KS Series

2900 RPM
April 4, 2002

Curve no. 2003
Min. Imp. Dia. 140mm/5.50"
Size 4" x 4" x 7"





Model 4007
KV & KS Series

3500 RPM
August 31, 2006

Curve no. 1944
Min. Imp. Dia. 5.50
Size 4 x 4 x 7

