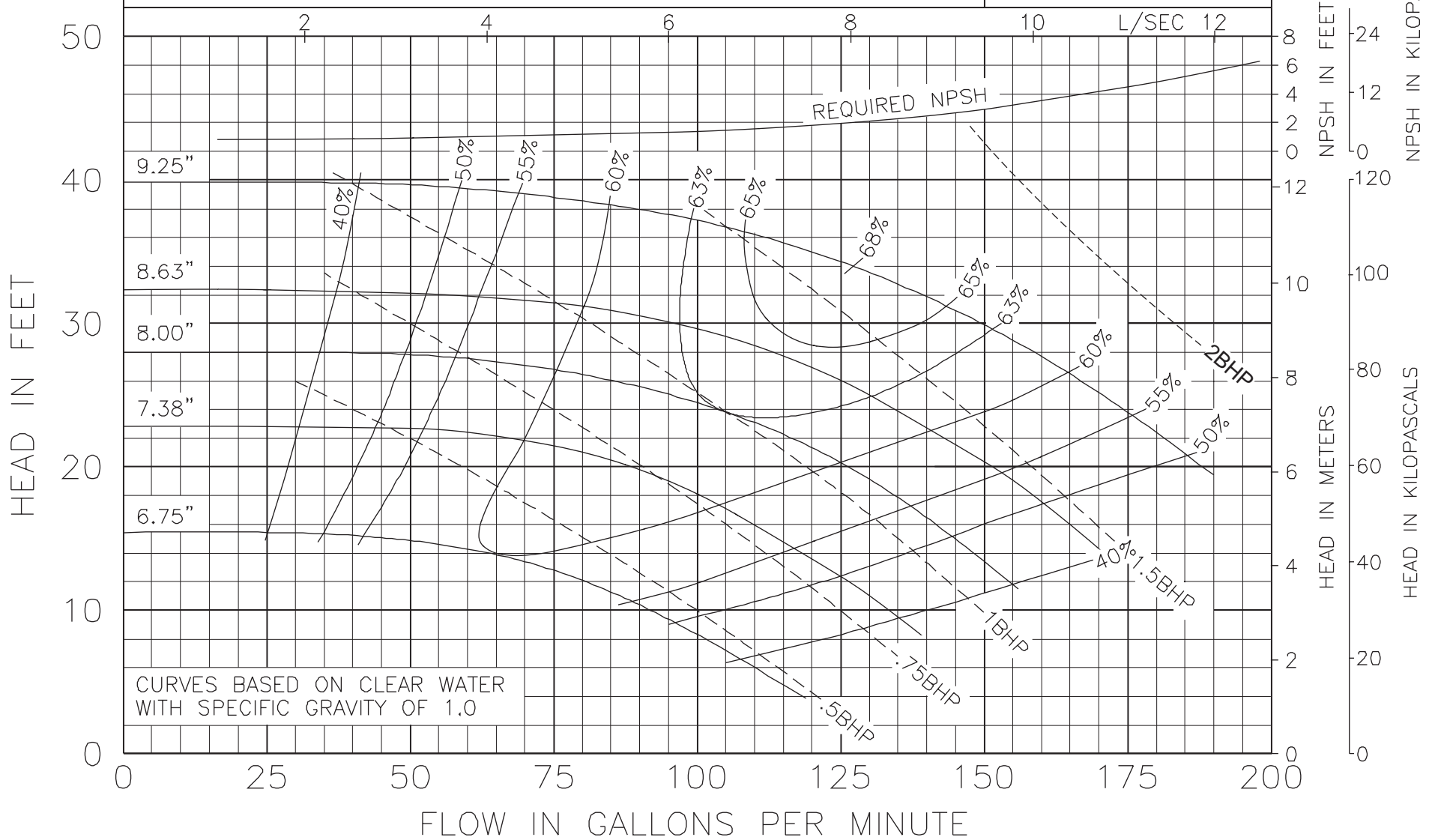




Model 3009
KV & KS Series

1160 RPM
October 23, 2000

Curve no. 1964
Min. Imp. Dia. 6.75
Size 3 x 3 x 9

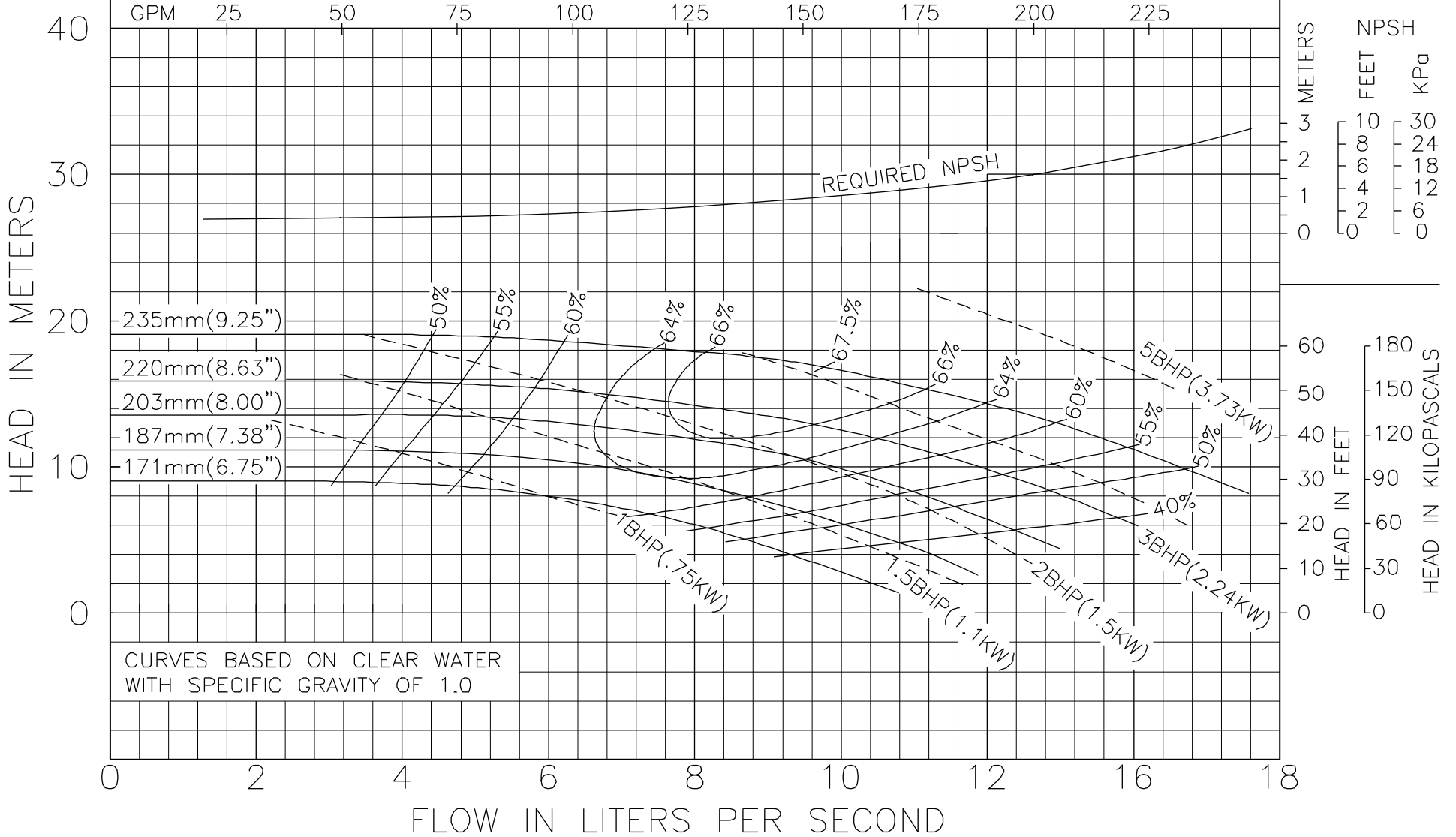


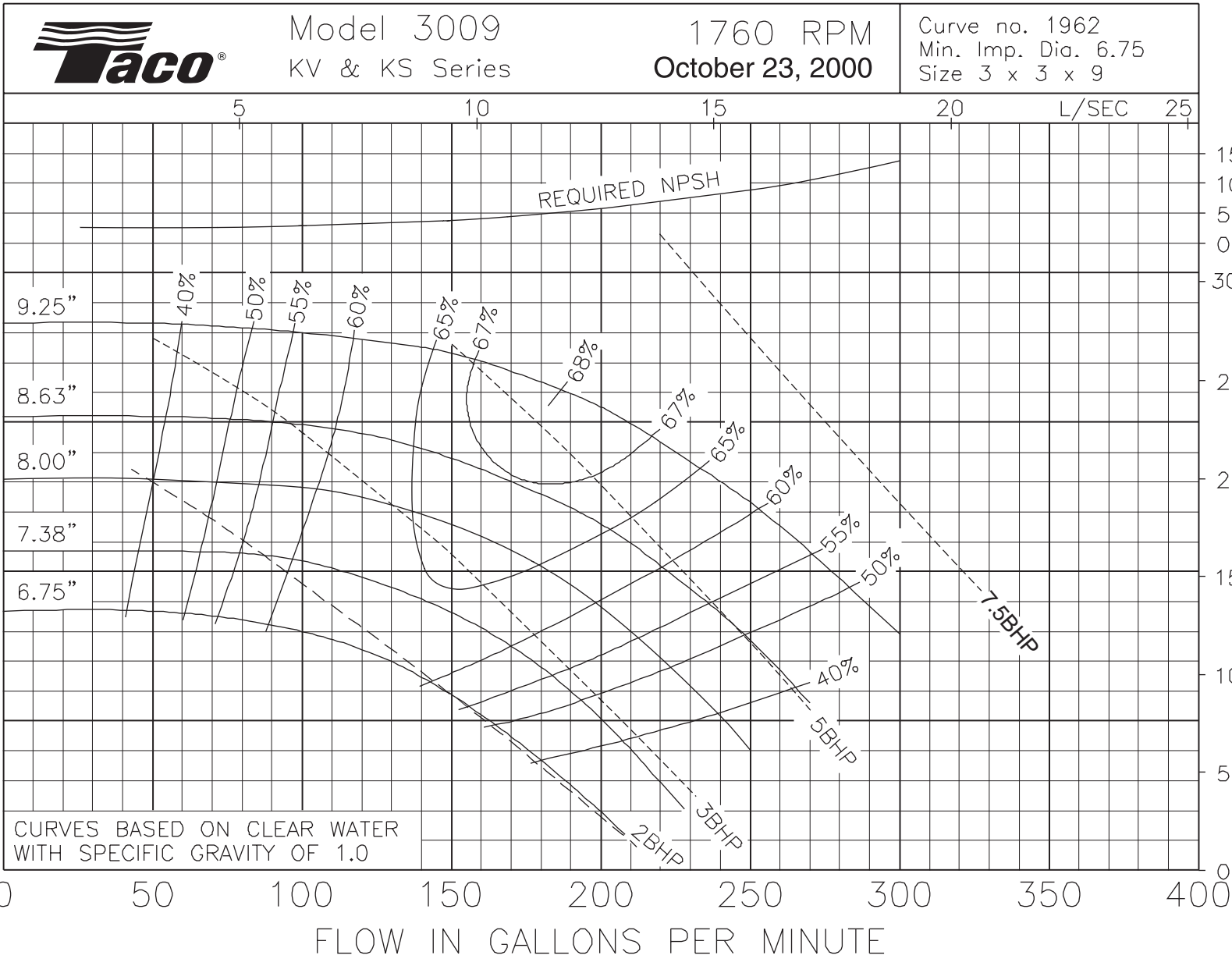


Model 3009
KV & KS Series

1450 RPM
April 4, 2002

Curve no. 1963
Min. Imp. Dia. 171mm/6.75"
Size 3" x 3" x 9"



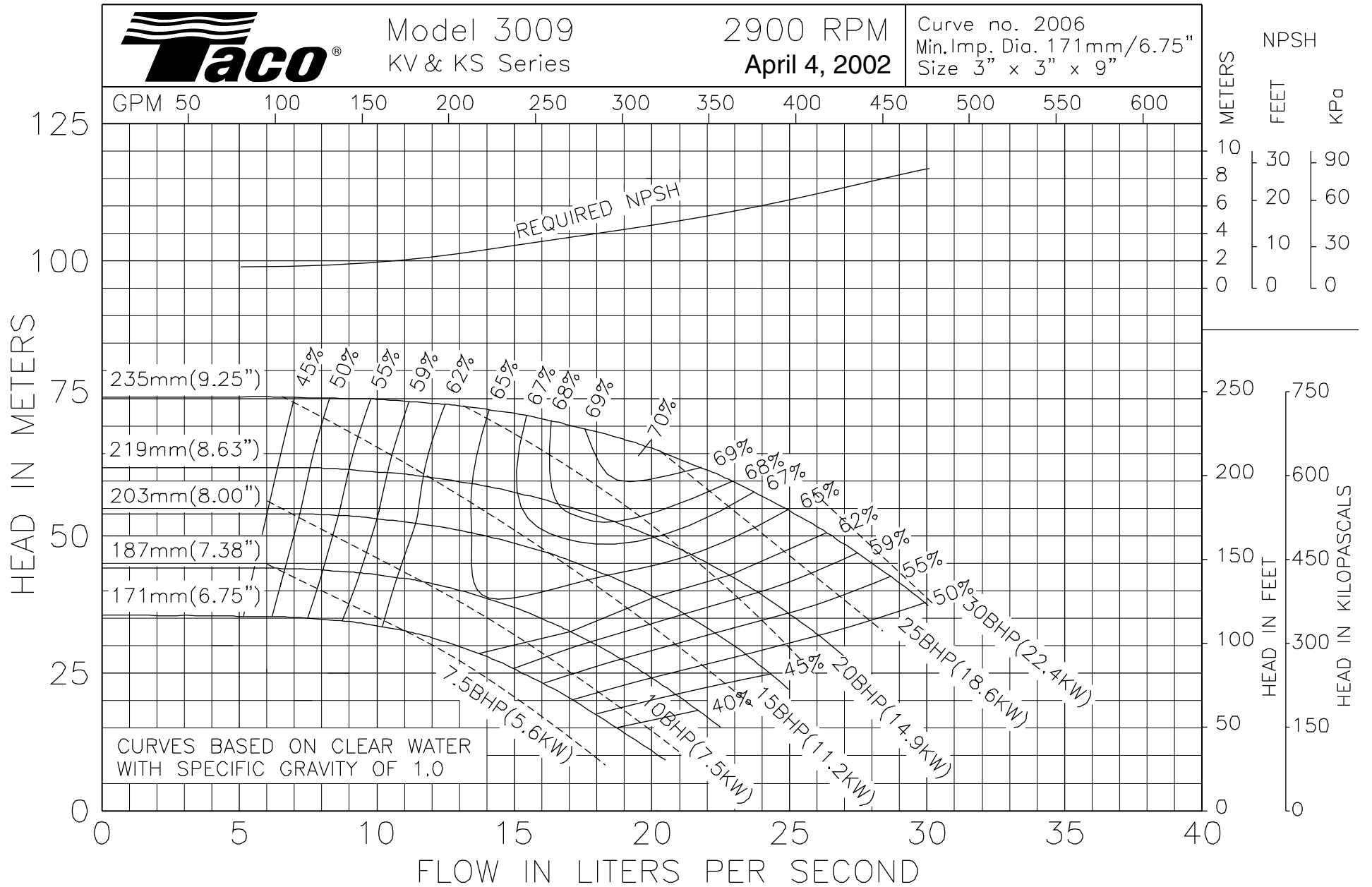




Model 3009
KV & KS Series

2900 RPM
April 4, 2002

Curve no. 2006
Min. Imp. Dia. 171mm/6.75"
Size 3" x 3" x 9"





Model 3009
KV & KS Series

3500 RPM
MAY 1, 2010

Curve no. 1961
Min. Imp. Dia. 6.75
Size 3 x 3 x 9

