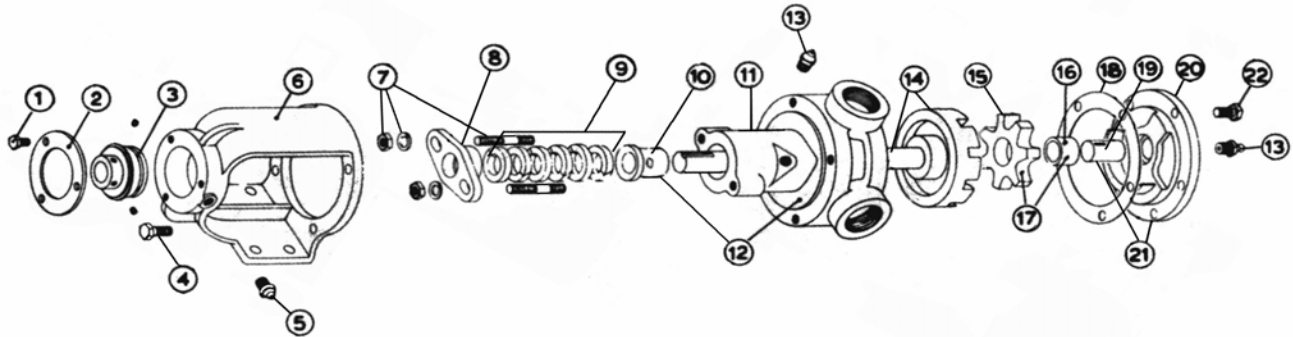


MODEL HX4-115 with Packing

Subject to change without notice
F.O.B. Factory

Supercedes all previous parts lists

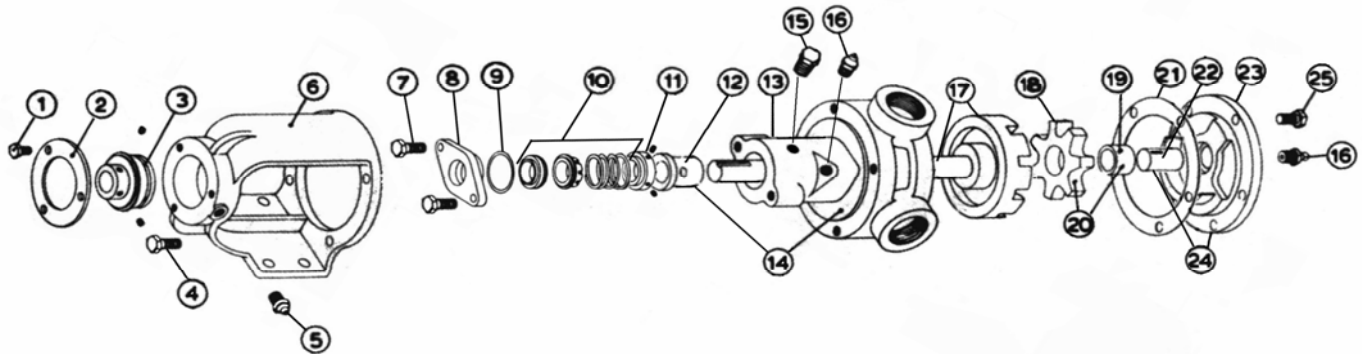


ITEM	DESCRIPTION	MATERIAL	PART NUMBER	QTY	PRICE
1	Bearing Retainer Bolts	1/4-28X5/8 Hex Cap Screw GR5	355-00-006-670	4	
2	Bearing Retainer	Alluminum	145-02-050-010	1	
3	Ball Bearing	Steel	150-00-125-605	1	
4	Bracket Bolt	5/16-18X3/4 Hex Cap Screw GR5	355-00-035-670	4	
5	Grease Fitting	1/8 NPT Straight Grease Fitting	325-00-025-605	1	
6	Bracket	Iron	165-02-005-310	1	
7	Packing Gland Fasteners	5/16-18X2 T 1/2 N 1 Stud	355-00-414-620	2	
		5/16" Flat Washer	355-00-493-660	2	
		5/16" Lockwasher	355-00-529-660	2	
		5/16-18 Heavy Hex Nut	355-00-575-660	2	
8	Packing Gland	Iron	370-02-050-310	1	
9	Packing Set	Standard - Up To 500 Deg F - C1065	365-00-250-780	1	
		Food Grade - Not Certified - C1045	365-00-250-751	1	
		High Temperature - 1625GF	365-00-250-280	1	
10	Casing Bushing	Bronze	175-02-070-050	1	
		Carbon	2-095-011-880-00	1	
11	Casing	Iron	190-02-275-310	1	
12	Casing and Bushing Ass'y	Iron / Bronze	185-03-275-330	1	
		Iron / Carbon	185-03-275-332	1	
13	Pipe Plug (when using carbon bushings)	1/8 NPT Hex Head Plug	390-00-050-605	1	
13	Grease Fitting	1/4-28 Straight Grease Fitting	325-00-075-605	2	
14	Rotor and Shaft Ass'y	Iron / Steel	455-03-264-349	1	
15	Idler	Iron	2-418-400-352-40	1	
16	Idler Bushing	Bronze	2-095-001-454-02	1	
		Carbon	2-095-011-880-02	1	
17	Idler and Bushing ass'y	Iron / Bronze	285-03-120-330	1	
		Iron / Carbon	285-03-120-332	1	
18	Head Gasket	Standard	245-00-046-240	2	
19	Idler Pin	Steel - Solid	295-00-060-690	1	
		Steel - Grooved	295-00-070-690	1	
20	Head	Iron - Plain	2-370-400-100-00	1	
		Iron - Relief Valve	265-02-130-310	1	
22	Head and Idler Pin Ass'y	Iron - Plain / Steel - Solid	270-03-110-350	1	
		Iron - Plain / Steel - Grooved	270-03-120-350	1	
		Iron - Relief Valve / Steel - Solid	270-03-135-350	1	
		Iron - Relief Valve / Steel - Grooved	270-03-130-350	1	
23	Head Bolts	5/16-18X3/4 Hex Cap Screw GR5	355-00-035-670	5	

MODEL HX4-115 with Mechanical Seal

Subject to change without notice
 F.O.B. Factory

Supercedes all previous parts lists



ITEM	DESCRIPTION	MATERIAL	PART NUMBER	QTY	PRICE
1	Bearing Retainer Bolts	1/4-28X5/8 Hex Cap Screw GR5	355-00-006-670	4	
2	Bearing Retainer	Alluminum	145-02-050-010	1	
3	Ball Bearing	Steel	150-00-125-605	1	
4	Bracket Bolt	5/16-18X3/4 Hex Cap Screw GR5	355-00-035-670	4	
5	Grease Fitting	1/8 NPT Straight Grease Fitting	325-00-025-605	1	
6	Bracket	Iron	165-02-005-310	1	
7	Seal Seat Retainer Fasteners	5/16-18X3/4 Hex Cap Screw GR5	355-00-035-670	2	
		5/16" Lockwasher	355-00-529-660	2	
8	Seal Seat Retainer	Iron	470-02-070-310	1	
		Iron - PTFE Seal Only	470-02-082-310	1	
9	Seal Seat Retainer Oring	Viton - #031	360-00-500-850	1	
10	Mechanical Seal Ass'y	Buna / Carbon vs Ni-Resist / Steel-BF-871	335-00-070-045	1	
		Buna / Carbon vs Ceramic / SS-BF1C1	335-120-0024	1	
		Viton / Carbon vs Ni-Resist / Steel-XP871	335-00-070-055	1	
		Viton / Carbon vs Ceramic / SS-XP1C1	335-00-070-050	1	
		PTFE / Carbon vs Ceramic / SS-QP1C1	335-192-0001	1	
11	Driving Ring	Steel	330-00-050-620	1	
		1/4-20X1/4 Cup Point SS Screw	355-00-271-660	1	
12	Casing Bushing	Bronze	175-02-070-050	1	
		Carbon	2-095-011-880-00	1	
13	Casing	Iron	190-02-205-310	1	
		Iron - PTFE Seal Only	190-02-285-310	1	
14	Casing and Bushing Ass'y	Iron / Bronze - Buna or Viton Seal Only	185-03-280-330	1	
		Iron / Carbon - Buna or Viton Seal Only	185-03-280-332	1	
		Iron / Bronze - PTFE Seal Only	Consult Factory	1	
		Iron / Carbon - PTFE Seal Only	Consult Factory	1	
15	Pipe Plug	1/8 NPT Hex Head Plug	390-00-050-605	1	
16	Grease Fitting	1/4-28 Straight Grease Fitting	325-00-075-605	2	
17	Rotor and Shaft Ass'y	Iron / Steel	455-03-264-349	1	
18	Idler	Iron	2-418-400-352-40	1	
19	Idler Bushing	Bronze	2-095-001-454-02	1	
		Carbon	2-095-011-880-02	1	
20	Idler and Bushing ass'y	Iron / Bronze	285-03-120-330	1	
		Iron / Carbon	285-03-120-332	1	
21	Head Gasket	Standard	245-00-046-240	2	
22	Idler Pin	Steel - Solid	295-00-060-690	1	
		Steel - Grooved	295-00-070-690	1	
23	Head	Iron - Plain	2-370-400-100-00	1	
		Iron - Relief Valve	265-02-130-310	1	
24	Head and Idler Pin Ass'y	Iron - Plain / Steel - Solid	270-03-110-350	1	
		Iron - Plain / Steel - Grooved	270-03-120-350	1	
		Iron - Relief Valve / Steel - Solid	270-03-135-350	1	
		Iron - Relief Valve / Steel - Grooved	270-03-130-350	1	
25	Head Bolts	5/16-18X3/4 Hex Cap Screw GR5	355-00-035-670	5	