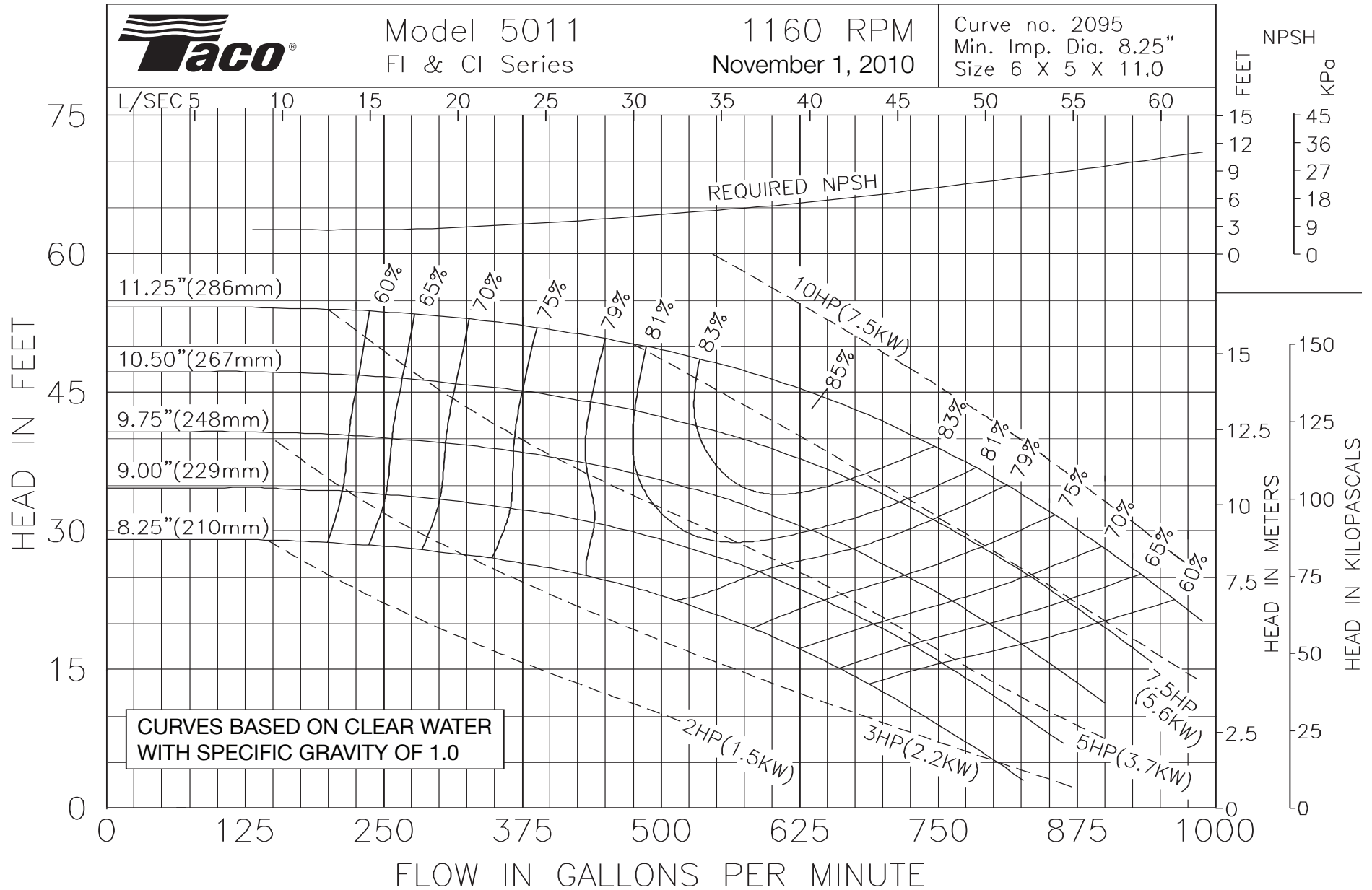




Model 5011
FI & CI Series

1160 RPM
November 1, 2010

Curve no. 2095
Min. Imp. Dia. 8.25"
Size 6 X 5 X 11.0





Model 5011
FI & CI Series

1760 RPM
November 1, 2010

Curve no. 2093
Min. Imp. Dia. 8.25"
Size 6 X 5 X 11.0

