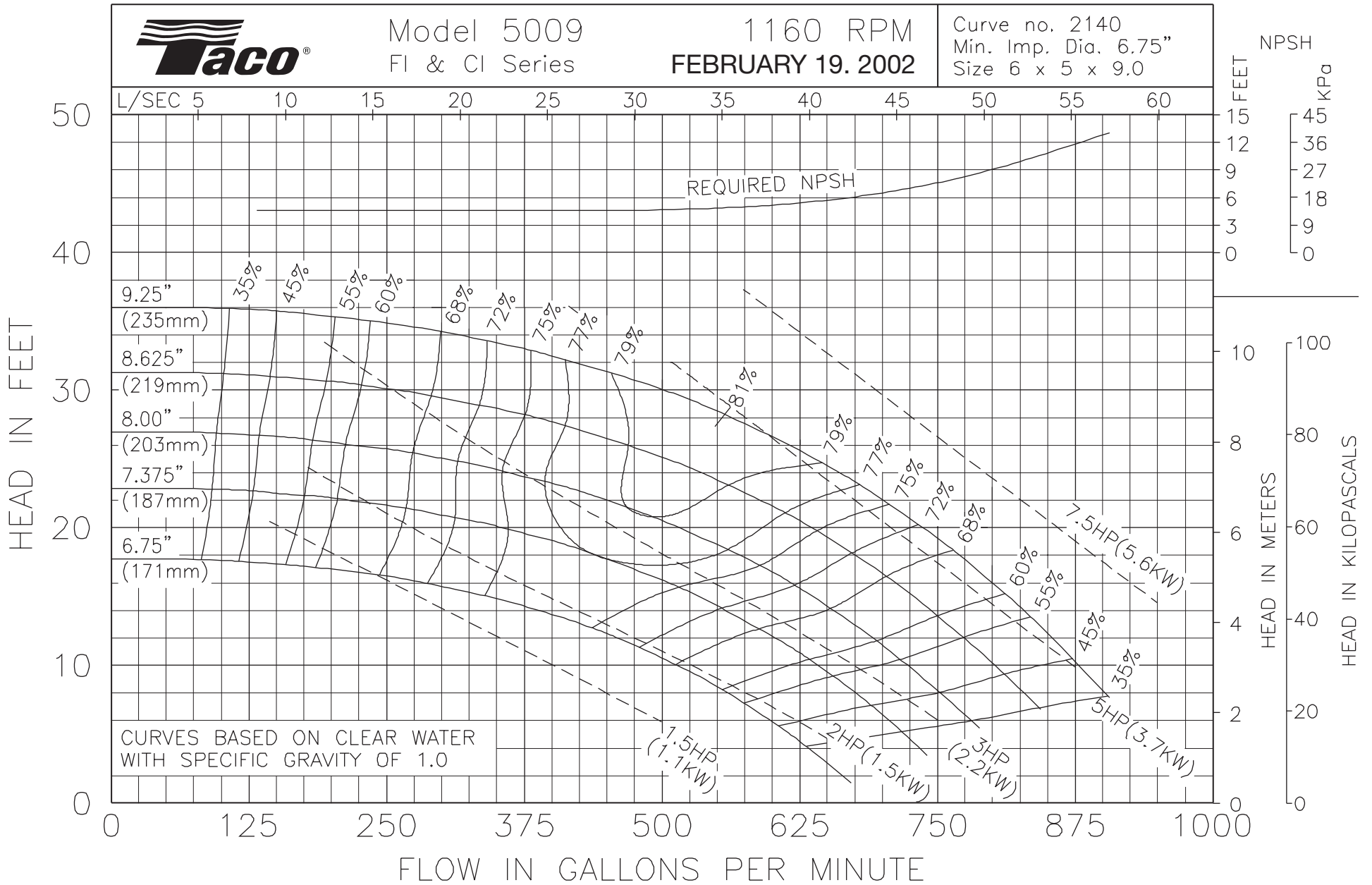




Model 5009
FI & CI Series

1160 RPM
FEBRUARY 19, 2002

Curve no. 2140
Min. Imp. Dia. 6.75"
Size 6 x 5 x 9.0





Model 5009
FI & CI Series

1760 RPM
November 1, 2010

Curve no. 2139
Min. Imp. Dia. 6.75
Size 6 x 5 x 9.0

