



Submittal Data Information

FI Series Pumps

301-2125

EFFECTIVE: JULY 31, 2012

SUPERSEDES: NEW

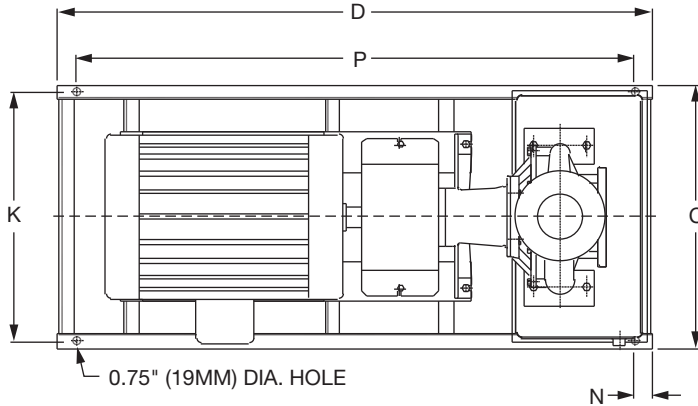
1160 RPM MODEL 4011C

JOB _____ ENGINEER _____

CONTRACTOR _____ REP. _____

ITEM NO.	MODEL NO.	IMPELLER DIA.	G.P.M.	HEAD/FT.	H.P.	ELEC. CHAR.

WEIGHT _____ PUMP/MOTOR _____



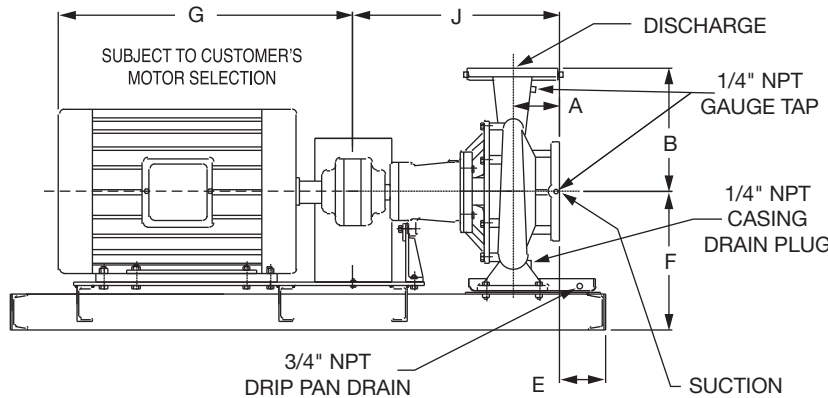
OPERATING SPECIFICATIONS

	Standard	Optional
Flange	ANSI Class 125	ANSI Class 250
Pressure	175 PSIG* (1210 KPA)	300 PSIG** (2070 KPA)
Temperature	250°F (120°C)	250°F (120°C)

Motors: All NEMA Standard (T Frame)
 * In accordance with ANSI Standard B16.1 Class 125
 ** In accordance with ANSI Standard B16.1 Class 250 Dim.

MAXIMUM ASSEMBLY WEIGHT

Motor Frame	Weight Lbs (Kg)
213T - 215T	565 (256)
254T - 256T	654 (297)



DIMENSIONS

50 Cycle Performance Curves attached when applicable.

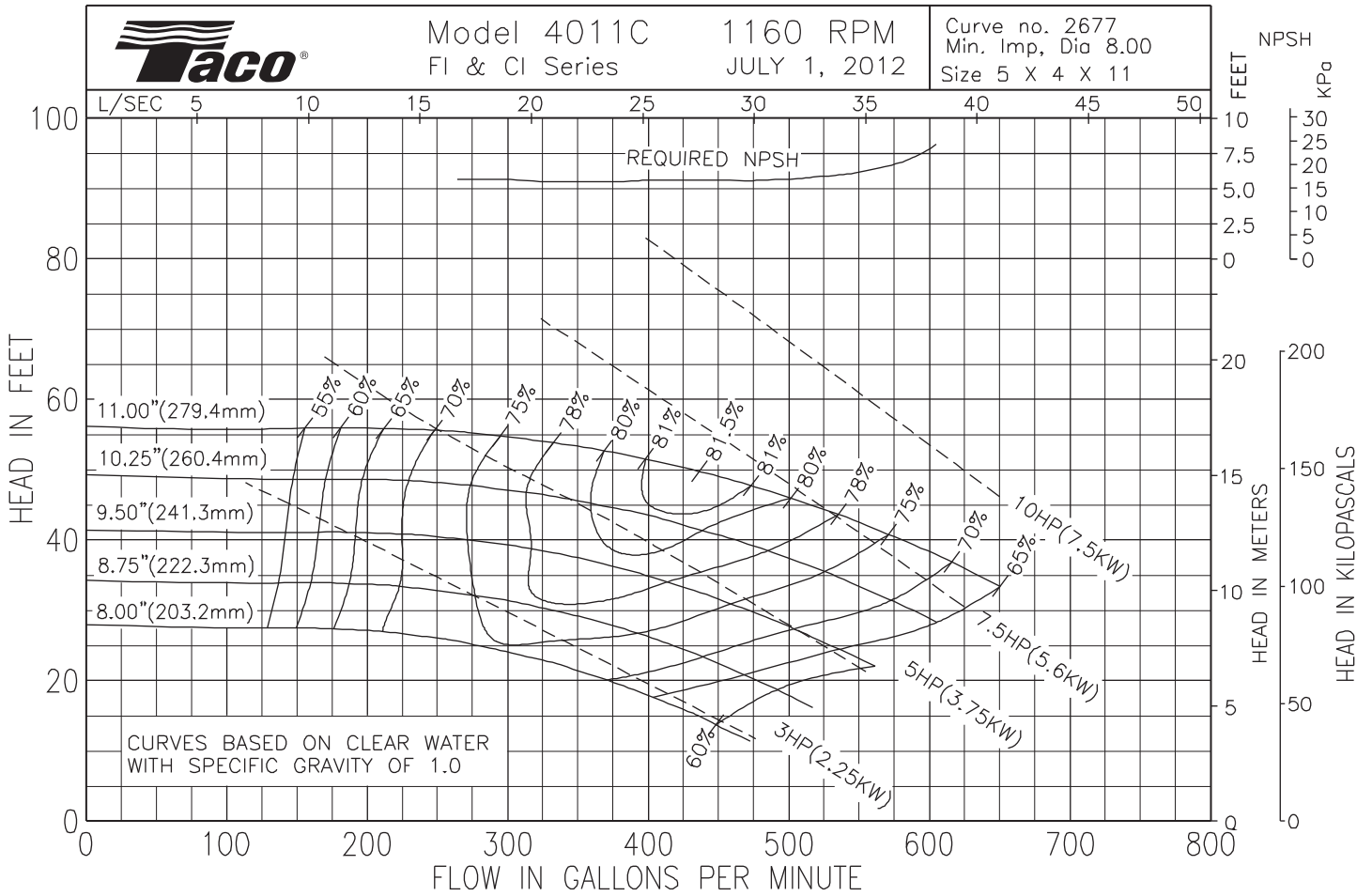
Model No. Flange Size (Suction x Discharge)	Motor Frame	HP 1160 (RPM)	A		B		C	D	E		F	G	J		K	N	P
			ANSI Class 125	ANSI Class 250	ANSI Class 125	ANSI Class 250			ANSI Class 125	ANSI Class 250			ANSI Class 125	ANSI Class 250			
4011C 5 x 4 (127 x 102)	213T	3	5.31 (135)	5.75 (146)	14.00 (356)	14.31 (363)	19.17 (487)	52.0 (1321)	0.46 (12)	0.03 (0.8)	14.03 (356)	17.94 (456)	24.24 (616)	24.68 (627)	17.67 (449)	2.00 (51)	48.0 (1219)
	215T	5										18.19 (462)					
	254T	7.5										21.69 (551)					
	256T	10										23.19 (589)					

English dimensions are in inches. Metric dimensions are in millimeters. Metric data is presented in ().
 Do not use for construction purposes unless certified.

MATERIALS OF CONSTRUCTION

ITEM	BRONZE FITTED			ALL IRON		
	Standard Pump Construction		Optional	Standard Pump Construction		Optional
	125# Flange	250# Flange	125# or 250# Flange	125# Flange	250# Flange	125# or 250# Flange
Casing	Cast Iron ASTM A48/A48M-03 Class 30A	Ductile Iron ASTM A536-84 Grade 65-45-12	N/A	Cast Iron ASTM A48/A48M-03 Class 30A	Ductile Iron ASTM A536-84 Grade 65-45-12	N/A
Cover	Cast Iron ASTM A48/A48M-03 Class 30A	Ductile Iron ASTM A536-84 Grade 65-45-12	N/A	Cast Iron ASTM A48/A48M-03 Class 30A	Ductile Iron ASTM A536-84 Grade 65-45-12	N/A
Impeller	Bronze ASTM B584-11 C87500 0.2% Max Lead	Bronze ASTM B584-11 C87500 0.2% Max Lead	N/A	Cast Iron ASTM A48/A48M-03 Class 30A	Cast Iron ASTM A48/A48M-03 Class 30A	N/A
Wear Ring	N/A	N/A	Bronze ASTM B584-11 C89835 0.2% Max Lead	N/A	N/A	N/A
Shaft	Carbon Steel AISI 1045	Carbon Steel AISI 1045	Stainless Steel TYPE 416"™" or 410"™" ASTM A582	Carbon Steel AISI 1045	Carbon Steel AISI 1045	Stainless Steel TYPE 416"™" or 410"™" ASTM A582
Shaft Sleeve	Bronze ASTM B584-11 C92200 0.2% Max Lead	Bronze ASTM B584-11 C92200 0.2% Max Lead	Stainless Steel TYPE 303 ASTM A276	Stainless Steel TYPE 303 ASTM A276	Stainless Steel TYPE 303 ASTM A276	N/A
Mech. Seal	Ceramic/EPT	Ceramic/EPT	CF	Ceramic/EPT	Ceramic/EPT	CF
Seal Flush Line	N/A	N/A	Copper	N/A	N/A	Stainless Steel

CF - Consult Factory N/A - Not Available



Comments:

Do it Once. Do it Right.®

TACO, INC., 1160 Cranston Street, Cranston, RI 02920 Telephone: (401) 942-8000 FAX: (401) 942-2360.
TACO (Canada), Ltd., 8450 Lawson Road, Unit #3, Milton, Ontario L9T 0J8. Telephone: 905/564-9422. FAX: 905/564-9436.

Visit our web site at: <http://www.taco-hvac.com>

Printed in USA
Copyright 2012
TACO, Inc.



Submittal Data Information

FI Series Pumps

301-2126

EFFECTIVE: JULY 31, 2012

SUPERSEDES: NEW

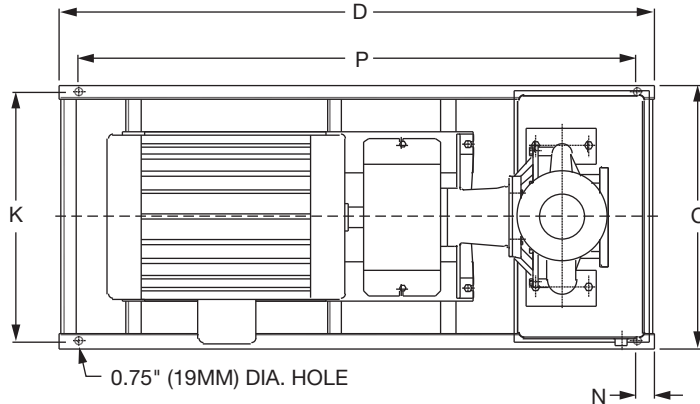
1760 RPM MODEL 4011C

JOB _____ ENGINEER _____

CONTRACTOR _____ REP. _____

ITEM NO.	MODEL NO.	IMPELLER DIA.	G.P.M.	HEAD/FT.	H.P.	ELEC. CHAR.

WEIGHT _____ PUMP/MOTOR _____



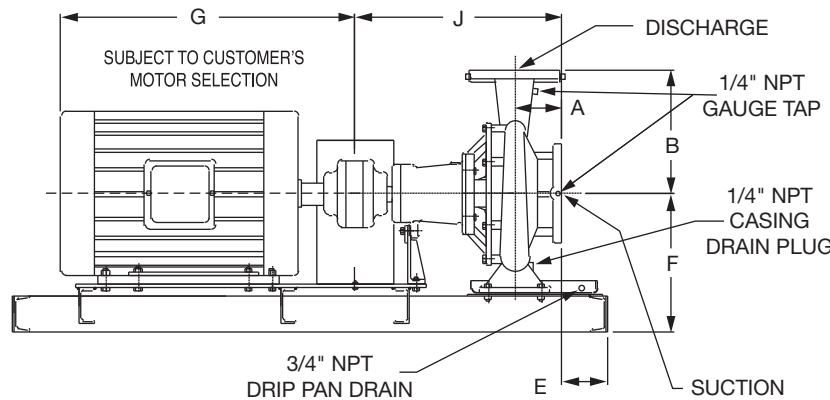
OPERATING SPECIFICATIONS

	Standard	Optional
Flange	ANSI Class 125	ANSI Class 250
Pressure	175 PSIG* (1210 KPA)	300 PSIG** (2070 KPA)
Temperature	250°F (120°C)	250°F (120°C)

Motors: All NEMA Standard (T Frame)
 * In accordance with ANSI Standard B16.1 Class 125
 ** In accordance with ANSI Standard B16.1 Class 250 Dim.

MAXIMUM ASSEMBLY WEIGHT

Motor Frame	Weight Lbs (Kg)
213T - 215T	578 (262)
254T - 256T	658 (298)
284T - 286T	864 (392)



DIMENSIONS

50 Cycle Performance Curves attached when applicable.

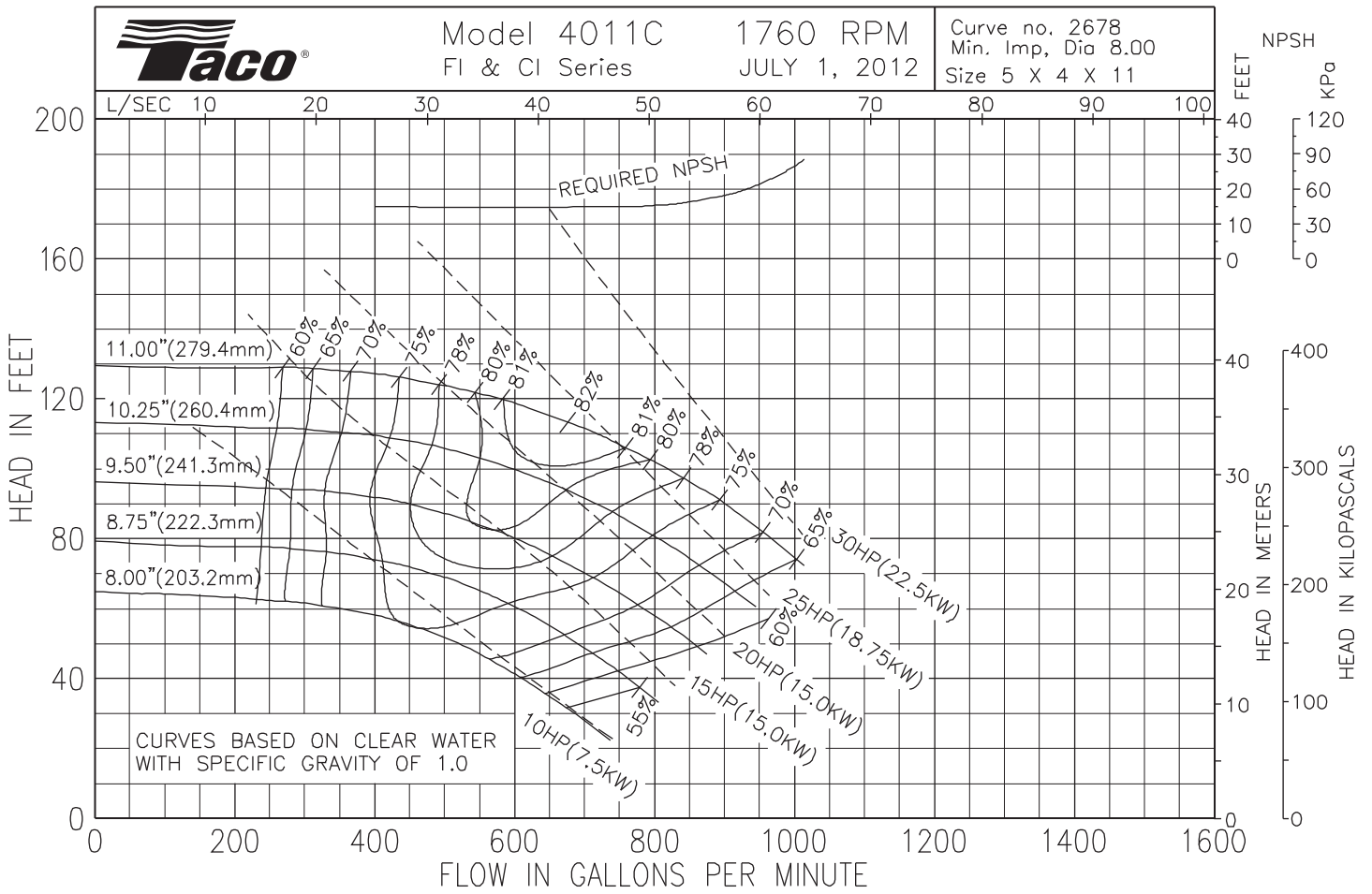
Model No. Flange Size (Suction x Discharge)	Motor Frame	HP 1760 (RPM)	A		B		C	D	E		F	G	J		K	N	P
			ANSI Class 125	ANSI Class 250	ANSI Class 125	ANSI Class 250			ANSI Class 125	ANSI Class 250			ANSI Class 125	ANSI Class 250			
4011C 5 x 4 (127 x 102)	215T	10	5.31 (135)	5.75 (146)	14.00 (356)	14.31 (363)	19.17 (487)	52.0 (1321)	0.46 (12)	0.03 (0.8)	14.03 (356)	18.19 (462)	24.24 (616)	24.68 (627)	17.67 (449)	2.00 (51)	48.0 (1219)
	254T	15										21.69 (551)					
	256T	20										23.19 (589)					
	284T	25										24.94 (633)					
	286T	30										25.06 (637)					

English dimensions are in inches. Metric dimensions are in millimeters. Metric data is presented in ().
 Do not use for construction purposes unless certified.

MATERIALS OF CONSTRUCTION

ITEM	BRONZE FITTED			ALL IRON		
	Standard Pump Construction		Optional	Standard Pump Construction		Optional
	125# Flange	250# Flange	125# or 250# Flange	125# Flange	250# Flange	125# or 250# Flange
Casing	Cast Iron ASTM A48/A48M-03 Class 30A	Ductile Iron ASTM A536-84 Grade 65-45-12	N/A	Cast Iron ASTM A48/A48M-03 Class 30A	Ductile Iron ASTM A536-84 Grade 65-45-12	N/A
Cover	Cast Iron ASTM A48/A48M-03 Class 30A	Ductile Iron ASTM A536-84 Grade 65-45-12	N/A	Cast Iron ASTM A48/A48M-03 Class 30A	Ductile Iron ASTM A536-84 Grade 65-45-12	N/A
Impeller	Bronze ASTM B584-11 C87500 0.2% Max Lead	Bronze ASTM B584-11 C87500 0.2% Max Lead	N/A	Cast Iron ASTM A48/A48M-03 Class 30A	Cast Iron ASTM A48/A48M-03 Class 30A	N/A
Wear Ring	N/A	N/A	Bronze ASTM B584-11 C89835 0.2% Max Lead	N/A	N/A	N/A
Shaft	Carbon Steel AISI 1045	Carbon Steel AISI 1045	Stainless Steel TYPE 416"™ or 410"™ ASTM A582	Carbon Steel AISI 1045	Carbon Steel AISI 1045	Stainless Steel TYPE 416"™ or 410"™ ASTM A582
Shaft Sleeve	Bronze ASTM B584-11 C92200 0.2% Max Lead	Bronze ASTM B584-11 C92200 0.2% Max Lead	Stainless Steel TYPE 303 ASTM A276	Stainless Steel TYPE 303 ASTM A276	Stainless Steel TYPE 303 ASTM A276	N/A
Mech. Seal	Ceramic/EPT	Ceramic/EPT	CF	Ceramic/EPT	Ceramic/EPT	CF
Seal Flush Line	N/A	N/A	Copper	N/A	N/A	Stainless Steel

CF - Consult Factory N/A - Not Available



Comments:

Do it Once. Do it Right.®

TACO, INC., 1160 Cranston Street, Cranston, RI 02920 Telephone: (401) 942-8000 FAX: (401) 942-2360.
TACO (Canada), Ltd., 8450 Lawson Road, Unit #3, Milton, Ontario L9T 0J8. Telephone: 905/564-9422. FAX: 905/564-9436.

Visit our web site at: <http://www.taco-hvac.com>

Printed in USA
Copyright 2012
TACO, Inc.