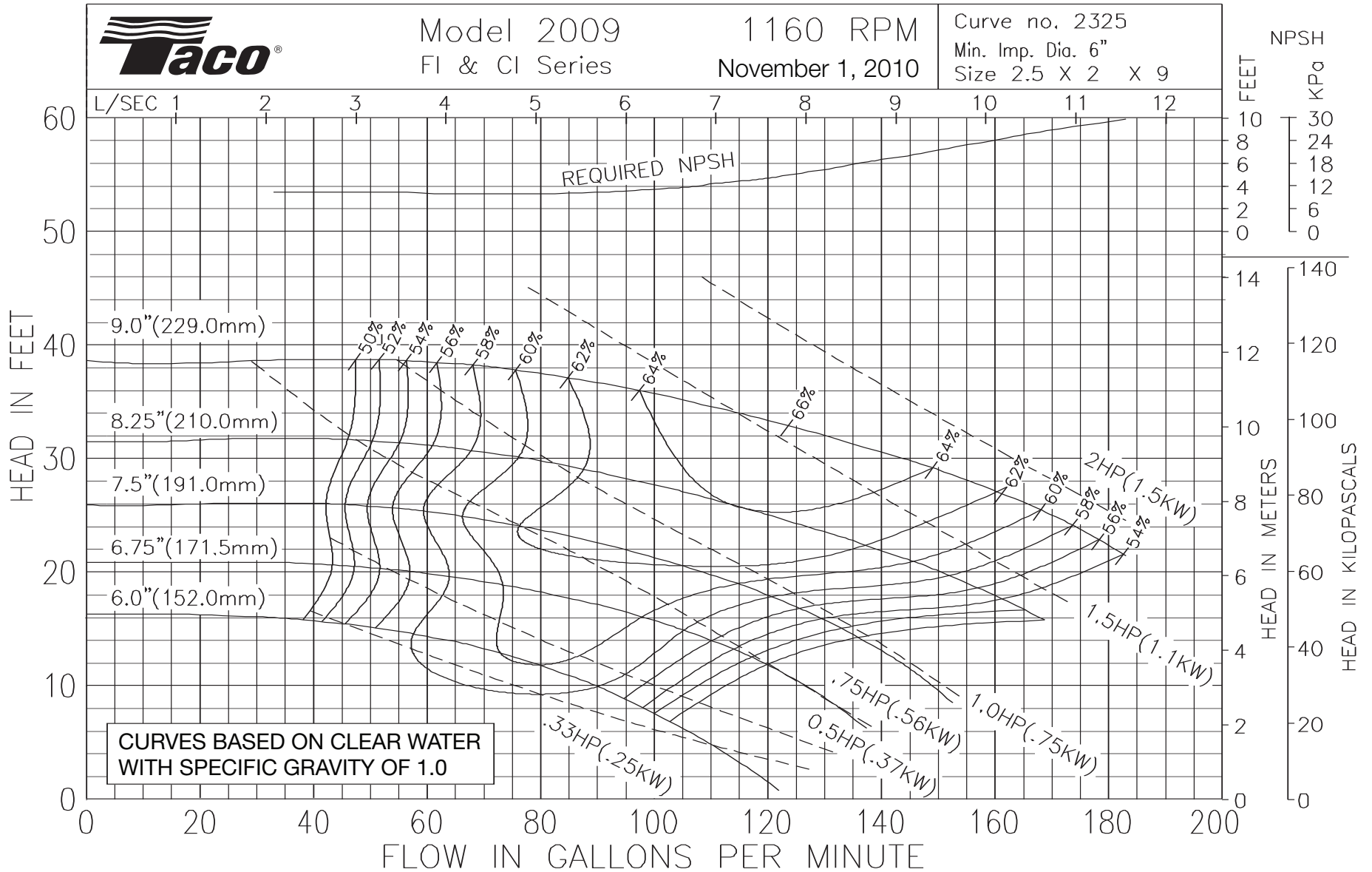




Model 2009
FI & CI Series

1160 RPM
November 1, 2010

Curve no. 2325
Min. Imp. Dia. 6"
Size 2.5 X 2 X 9

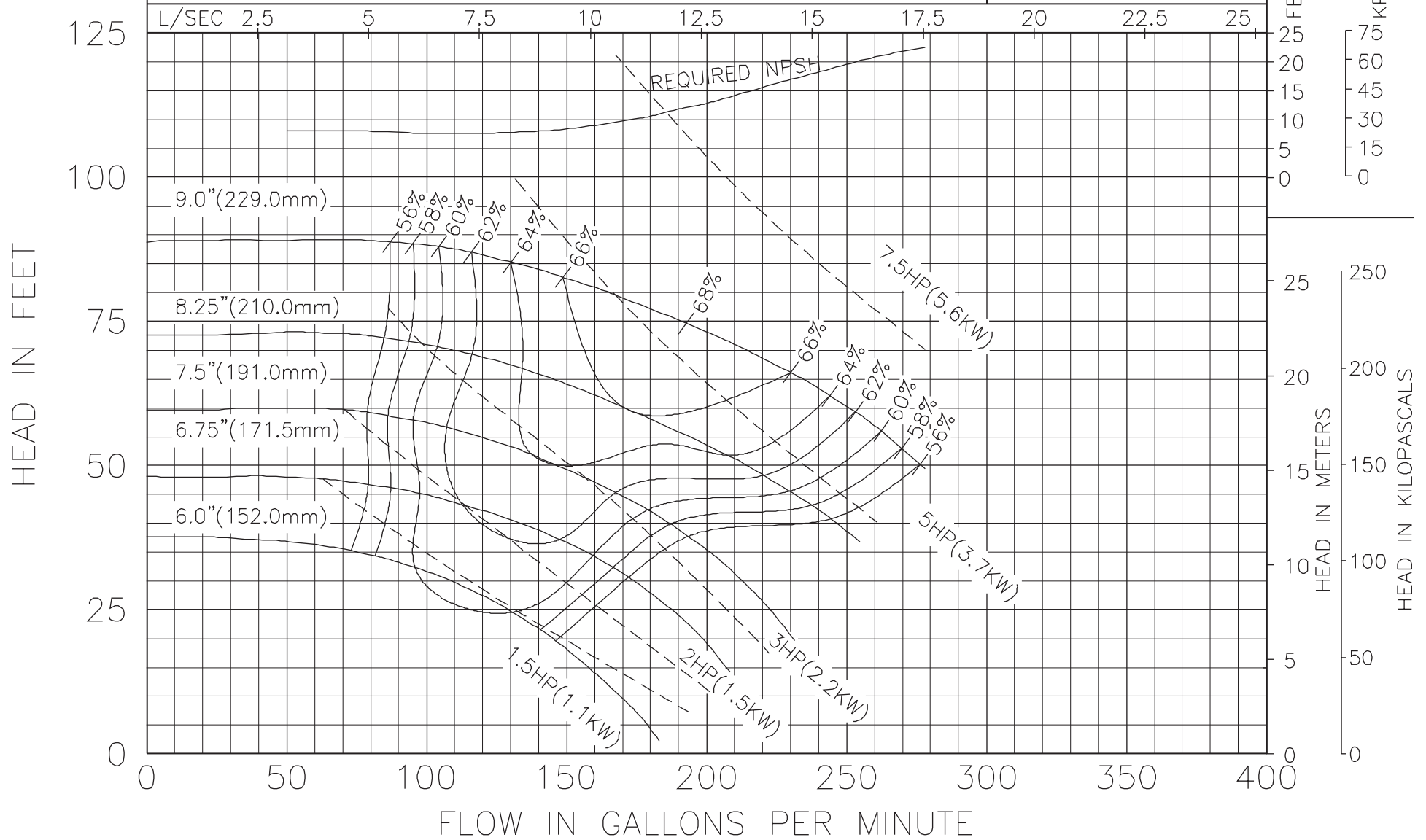




Model 2009
FI & CI Series

1760 RPM
DECEMBER, 9 2003

PC-2324
Min. Imp. Dia. 6.0
Size 2.5 x 2 x 9

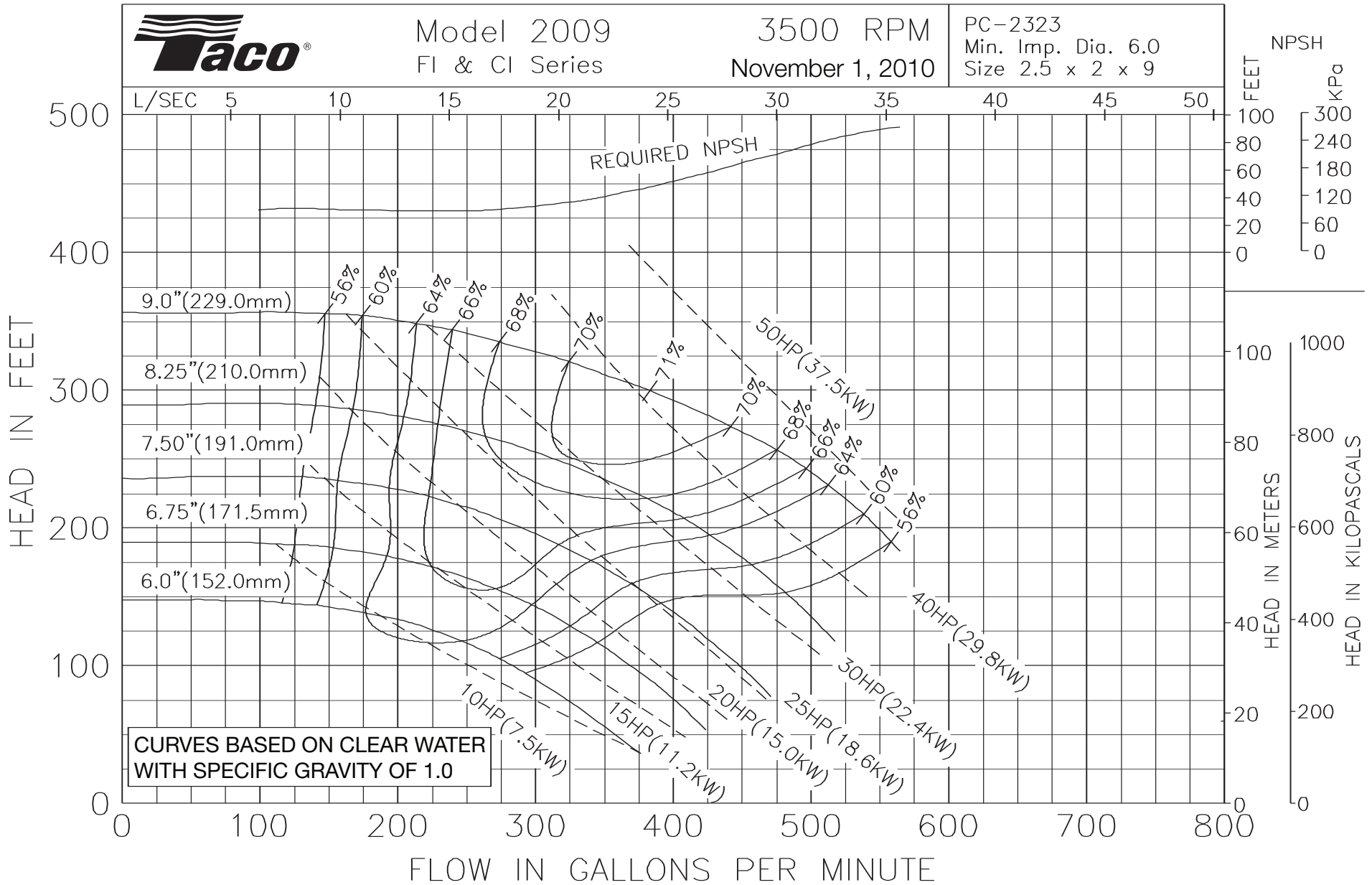




Model 2009
FI & CI Series

3500 RPM
November 1, 2010

PC-2323
Min. Imp. Dia. 6.0
Size 2.5 x 2 x 9



CURVES BASED ON CLEAR WATER
WITH SPECIFIC GRAVITY OF 1.0