

MATERIALS OF CONSTRUCTION

| Item | BRONZE FITTED | | ALL IRON | |
|-----------------|------------------------------|------------------------------|------------------------------|------------------------------|
| | Std. Pump Constr. | Optional | Standard | Optional |
| Casing | Cast Iron ASTM A48 Class 30A | N/A | Cast Iron ASTM A48 Class 30A | N/A |
| Impeller | Bronze ASTM B584-836 | N/A | Cast Iron ASTM A48 Class 30A | N/A |
| Wear Ring | N/A | Bronze ASTM B584-932 SAE660 | N/A | N/A |
| Shaft | Carbon Steel AISI 1045 | St. Steel AISI 416 ASTM A582 | Carbon Steel AISI 1045 | St. Steel AISI 416 ASTM A582 |
| Shaft Sleeve | Bronze ASTM B584-932 SAE660 | St. Steel AISI 303 ASTM A276 | St. Steel AISI 303 ASTM A276 | N/A |
| Mech. Seal | Ceramic/EPT | CF | Ceramic/EPT | CF |
| Seal Flush Line | N/A | Copper | N/A | Stainless Steel |

CF - Consult Factory

N/A - Not Available

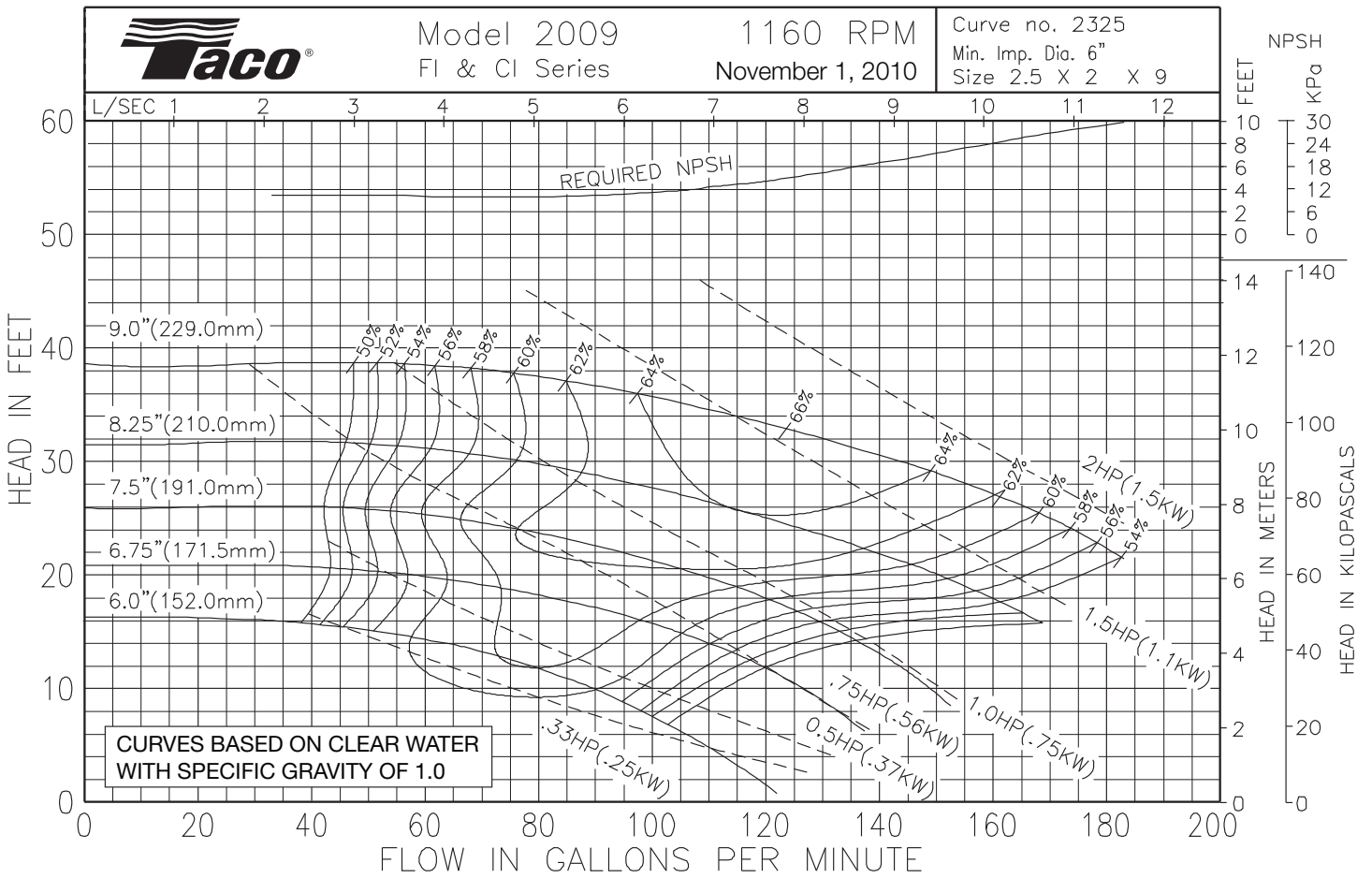
OPERATING SPECIFICATIONS

| | Standard | Optional |
|-------------|----------------------|-----------------------|
| Flange | ANSI Class 125 | ANSI Class 250 |
| Pressure | 175 PSIG* (1210 KPA) | 300 PSIG** (2070 KPA) |
| Temperature | 250°F (120°C) | 250°F (120°C) |

Motors: All NEMA Standard (T Frame)
 * In accordance with ANSI Standard B16.1 Class 125
 ** In accordance with ANSI Standard B16.1 Class 250 Dim.

MAXIMUM ASSEMBLY WEIGHT

| Motor Frame | Weight Lbs (Kg) |
|---------------|-----------------|
| 143JM - 145JM | 143 (65) |
| 182JM - 184JM | 171 (78) |



Comments:

Do it Once. Do it Right.®

TACO, INC., 1160 Cranston Street, Cranston, RI 02920 Telephone: (401) 942-8000 FAX: (401) 942-2360.
 TACO (Canada), Ltd., 8450 Lawson Road, Unit #3, Milton, Ontario L9T 0J8. Telephone: 905/564-9422. FAX: 905/564-9436.
 Visit our web site at: <http://www.taco-hvac.com>

Printed in USA
 Copyright 2010
 TACO, Inc.

MATERIALS OF CONSTRUCTION

| Item | BRONZE FITTED | | ALL IRON | |
|-----------------|------------------------------|------------------------------|------------------------------|------------------------------|
| | Std. Pump Constr. | Optional | Standard | Optional |
| Casing | Cast Iron ASTM A48 Class 30A | N/A | Cast Iron ASTM A48 Class 30A | N/A |
| Impeller | Bronze ASTM B584-836 | N/A | Cast Iron ASTM A48 Class 30A | N/A |
| Wear Ring | N/A | Bronze ASTM B584-932 SAE660 | N/A | N/A |
| Shaft | Carbon Steel AISI 1045 | St. Steel AISI 416 ASTM A582 | Carbon Steel AISI 1045 | St. Steel AISI 416 ASTM A582 |
| Shaft Sleeve | Bronze ASTM B584-932 SAE660 | St. Steel AISI 303 ASTM A276 | St. Steel AISI 303 ASTM A276 | N/A |
| Mech. Seal | Ceramic/EPT | CF | Ceramic/EPT | CF |
| Seal Flush Line | N/A | Copper | N/A | Stainless Steel |

CF - Consult Factory

N/A - Not Available

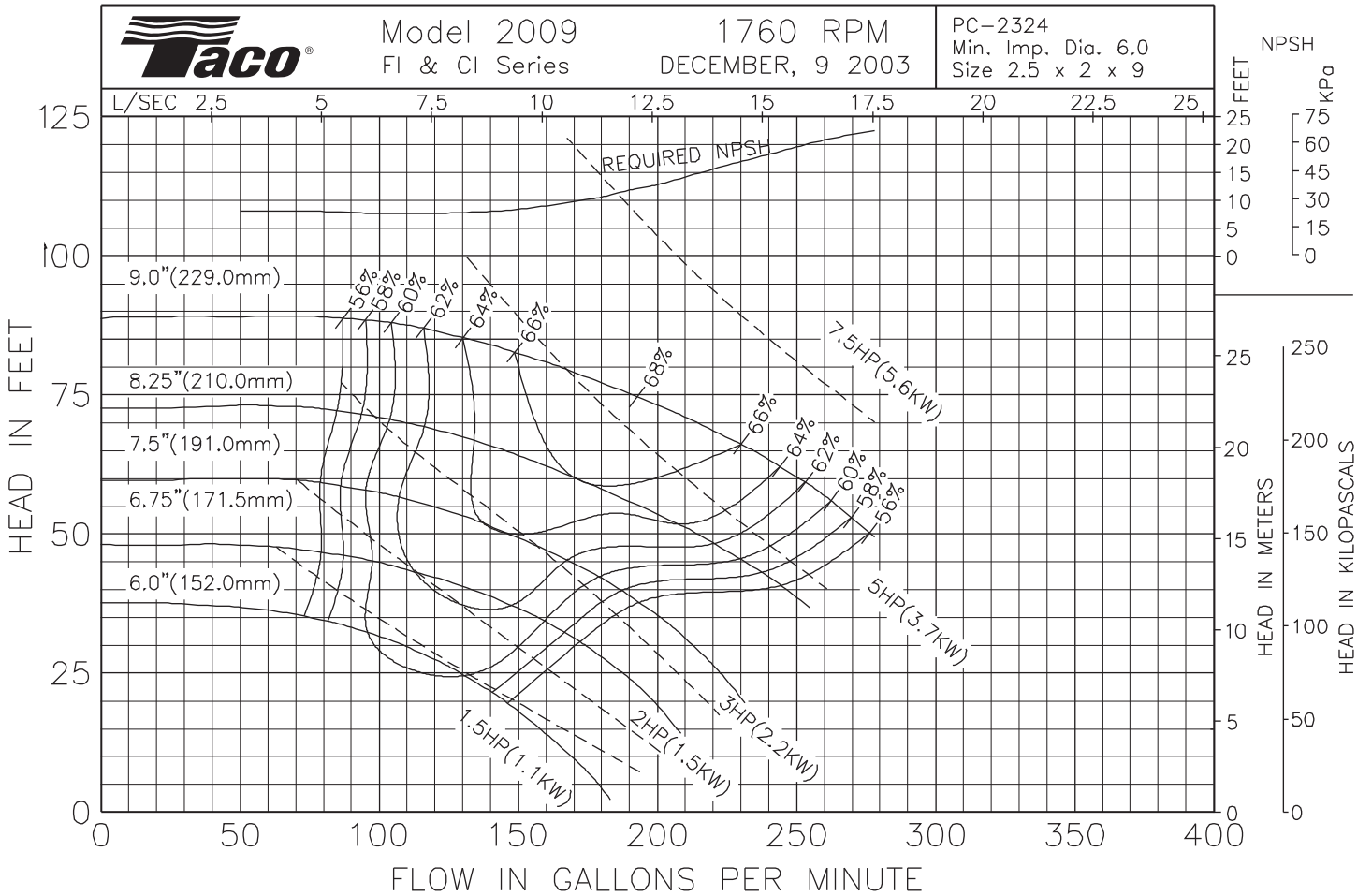
OPERATING SPECIFICATIONS

| | Standard | Optional |
|-------------|----------------------|-----------------------|
| Flange | ANSI Class 125 | ANSI Class 250 |
| Pressure | 175 PSIG* (1210 KPA) | 300 PSIG** (2070 KPA) |
| Temperature | 250°F (120°C) | 250°F (120°C) |

Motors: All NEMA Standard (T Frame)
 * In accordance with ANSI Standard B16.1 Class 125
 ** In accordance with ANSI Standard B16.1 Class 250 Dim.

MAXIMUM ASSEMBLY WEIGHT

| Motor Frame | Weight Lbs (Kg) |
|---------------|-----------------|
| 143JM - 145JM | 132 (60) |
| 182JM - 184JM | 168 (76) |
| 213JM - 215JM | 201 (91) |



Comments:

Do it Once. Do it Right.®

TACO, INC., 1160 Cranston Street, Cranston, RI 02920 Telephone: (401) 942-8000 FAX: (401) 942-2360.
TACO (Canada), Ltd., 8450 Lawson Road, Unit #3, Milton, Ontario L9T 0J8. Telephone: 905/564-9422. FAX: 905/564-9436.
 Visit our web site at: <http://www.taco-hvac.com>

Printed in USA
 Copyright 2009
 TACO, Inc.

MATERIALS OF CONSTRUCTION

| Item | BRONZE FITTED | | ALL IRON | |
|-----------------|--------------------------------------|--------------------------------------|------------------------------------|------------------------------------|
| | Std. Pump Constr. | Optional | Standard | Optional |
| Casing | Cast Iron ASTM A48 Class 30A | N/A | Cast Iron ASTM A48 Class 30A | N/A |
| Impeller | Bronze ASTM B584-836 | N/A | Cast Iron ASTM A48 Class 30A | N/A |
| Wear Ring | N/A | Bronze ASTM B584-932 SAE660 | N/A | N/A |
| Shaft | Carbon Steel AISI 1045 | St. Steel AISI 416 ASTM A582 | Carbon Steel AISI 1045 | St. Steel AISI 416 ASTM A582 |
| Shaft Sleeve | Bronze ASTM B584-932 SAE660 | St. Steel AISI 303 ASTM A276 | St. Steel AISI 303 ASTM A276 | N/A |
| Mech. Seal | Ceramic/ EPT | CF | Ceramic/ EPT | CF |
| Seal Flush Line | N/A | Copper | N/A | Stainless Steel |

CF - Consult Factory

N/A - Not Available

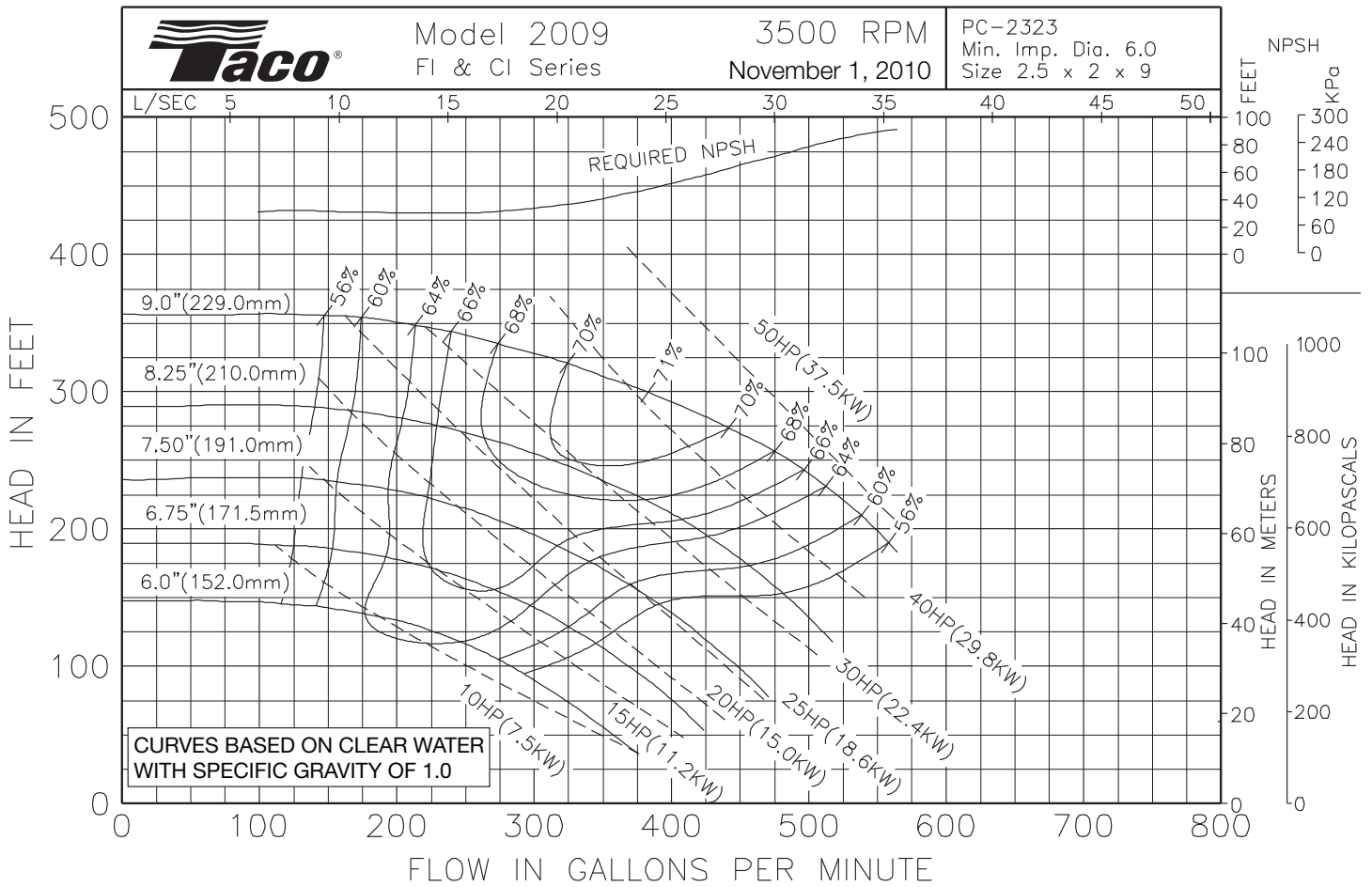
OPERATING SPECIFICATIONS

| | Standard | Optional |
|-------------|-------------------------|--------------------------|
| Flange | ANSI Class 125 | ANSI Class 250 |
| Pressure | 175 PSIG* (1210 KPA) | 300 PSIG** (2070 KPA) |
| Temperature | 250°F (120°C) | 250°F (120°C) |

Motors: All NEMA Standard (T Frame)
 * In accordance with ANSI Standard B16.1 Class 125
 ** In accordance with ANSI Standard B16.1 Class 250 Dim.

MAXIMUM ASSEMBLY WEIGHT

| Motor Frame | Weight Lbs (Kg) |
|---------------|--------------------|
| 182JM - 184JM | 215 (98) |
| 213JM - 215JM | 311 (141) |
| 254JM - 256JM | 485 (220) |
| 284JM - 286JM | 693 (314) |
| 324JM - 326JM | 803 (364) |



Comments:

Do it Once. Do it Right.®

TACO, INC., 1160 Cranston Street, Cranston, RI 02920 Telephone: (401) 942-8000 FAX: (401) 942-2360.
TACO (Canada), Ltd., 8450 Lawson Road, Unit #3, Milton, Ontario L9T 0J8. Telephone: 905/564-9422. FAX: 905/564-9436.
 Visit our web site at: <http://www.taco-hvac.com>

Printed in USA
 Copyright 2010
 TACO, Inc.