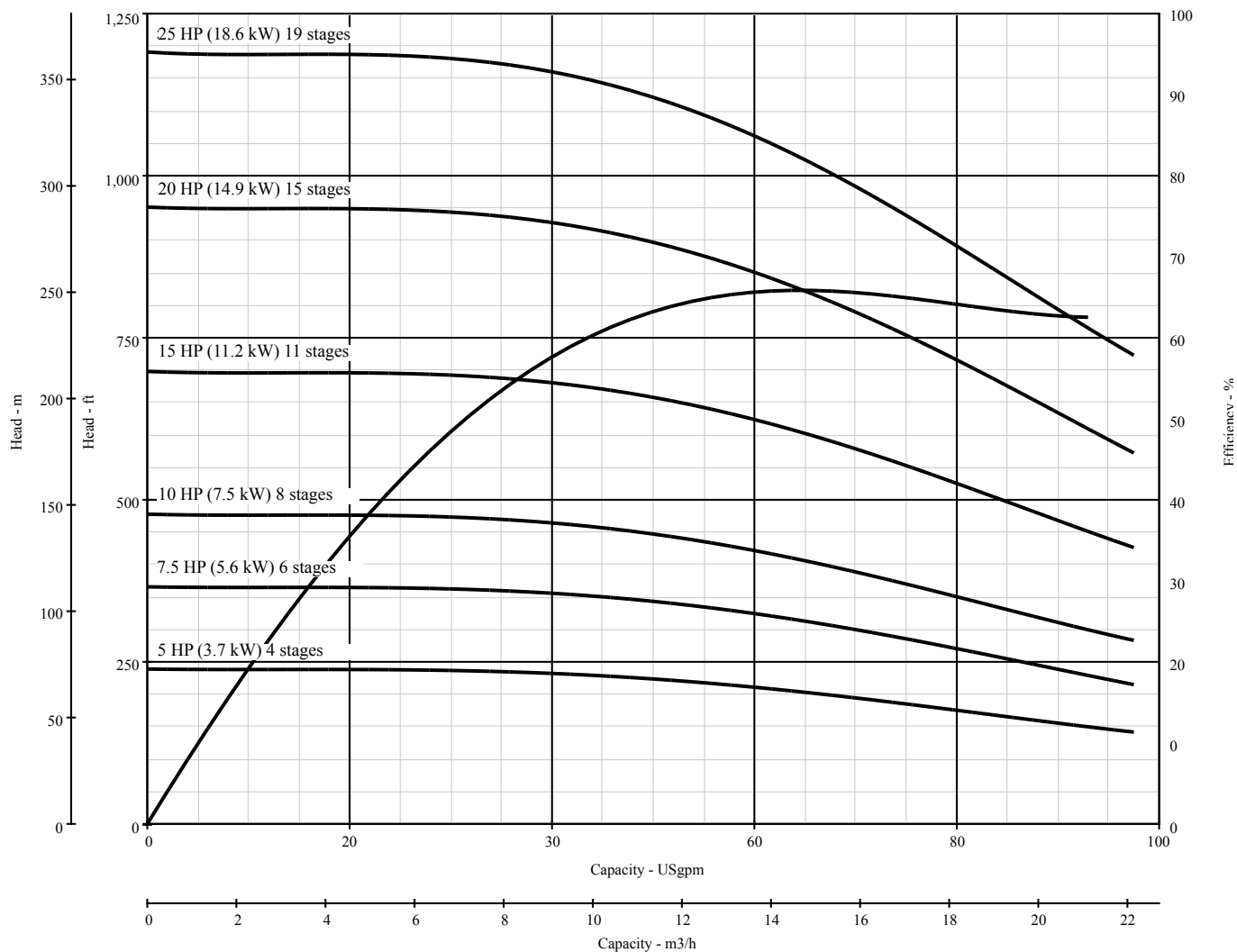


# BERKELEY® 5TMH-75

## SUBMERSIBLE TURBINES

Curve 5TMH-75  
 Date 08/01/16  
 Page 1.0  
 Supersedes 08/20/15

Nominal RPM: 3500 (60 hz)  
 Based on Fresh Water@ 68° F (20° C)  
 Maximum Working Pressure: 735 PSI (50.6 BAR)  
 Standard Catalog Staging  
 Pump Diameter with Cableguard 5.625" (143 mm)

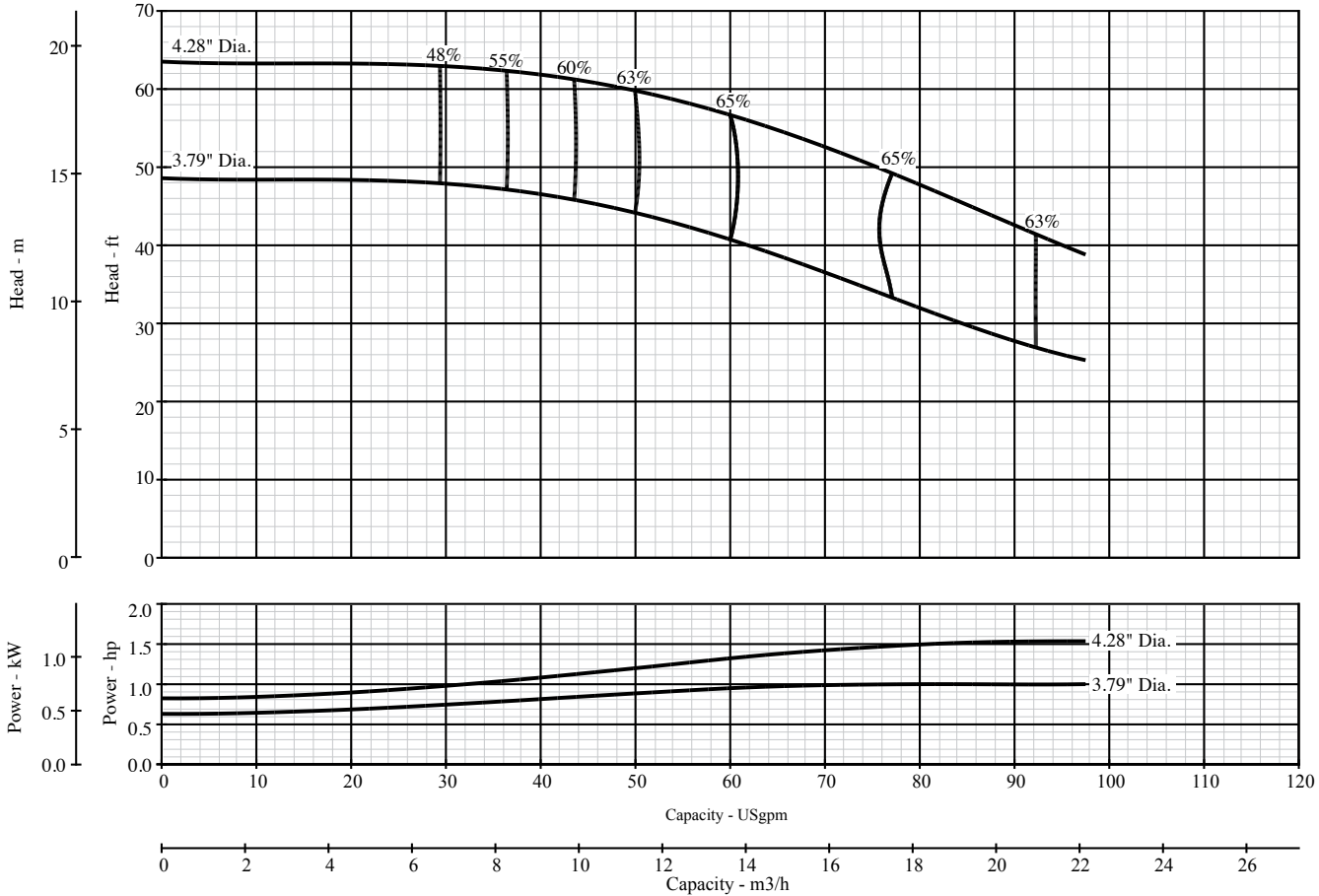


# BERKELEY® 5TMH-75

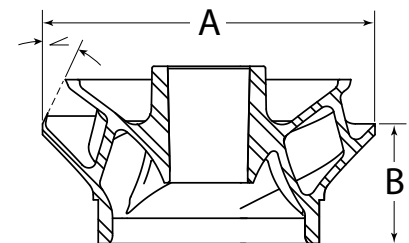
## SUBMERSIBLE TURBINES

Curve 5TMH-75  
 Date 08/01/16  
 Page 1.0  
 Supercedes 08/20/15

Nominal RPM: **3500**  
 Based on Fresh Water@ 68 deg. F  
 Maximum Working Pressure: 735 PSI (50.6 BAR)



| Part Name                                     | Material           | Reference             |
|---|--------------------|-----------------------|
| Top Bearing                                   | Vesconite®         |                       |
| Discharge Adapter                             | Ductile Iron       | ASTM A536-84 65-45-12 |
| Bowls   | Class 30 Grey Iron | ASTM A48 Class 30     |
| Suction Bracket                               | Ductile Iron       | ASTM A536-84 65-45-12 |
| Bowl Bearing                                  | Rubber             | Neoprene              |
| Impeller Collets                              | Steel              | AISI 1226             |
| Pump Shaft, Shaft Coupling                    | Stainless Steel    | AISI 416 UNS S41600   |
| Upthrust Adjustment, Impeller, Suction Screen | Stainless Steel    | AISI 302 UNS S30400   |
| Cable Guard                                   | Stainless Steel    | AISI 302 UNS S30200   |



| Stages  | Assembled pump length less motor – inches (mm) |
|---|--|
| 1   | 17.45 (443)                                    |
| Each additional stage   | 5.25 (133)                                     |
| Pump Diameter with leadguard: 5.625 inches (143 mm)   |  |
| Refer to the following literature pieces for motor information, including power and length:<br>P10842BK for Pentek® motors; P8174WS for Hitachi® motors |  |

| Trim | "A" Diameter inches (mm) | "B" Height inches (mm) | ∠   |
|------|--------------------------|------------------------|-----|
| "A"  | 4.275" (108.6)           | 1.15" (29.2)           | 24° |
| "B"  | 3.793" (96.4)            | 1.08" (27.4)           | 24° |



293 WRIGHT STREET, DELAVAN, WI 53115 www.BerkeleyPumps.com  
 PH: 888-237-5353 ORDERS FAX: 800-321-8793

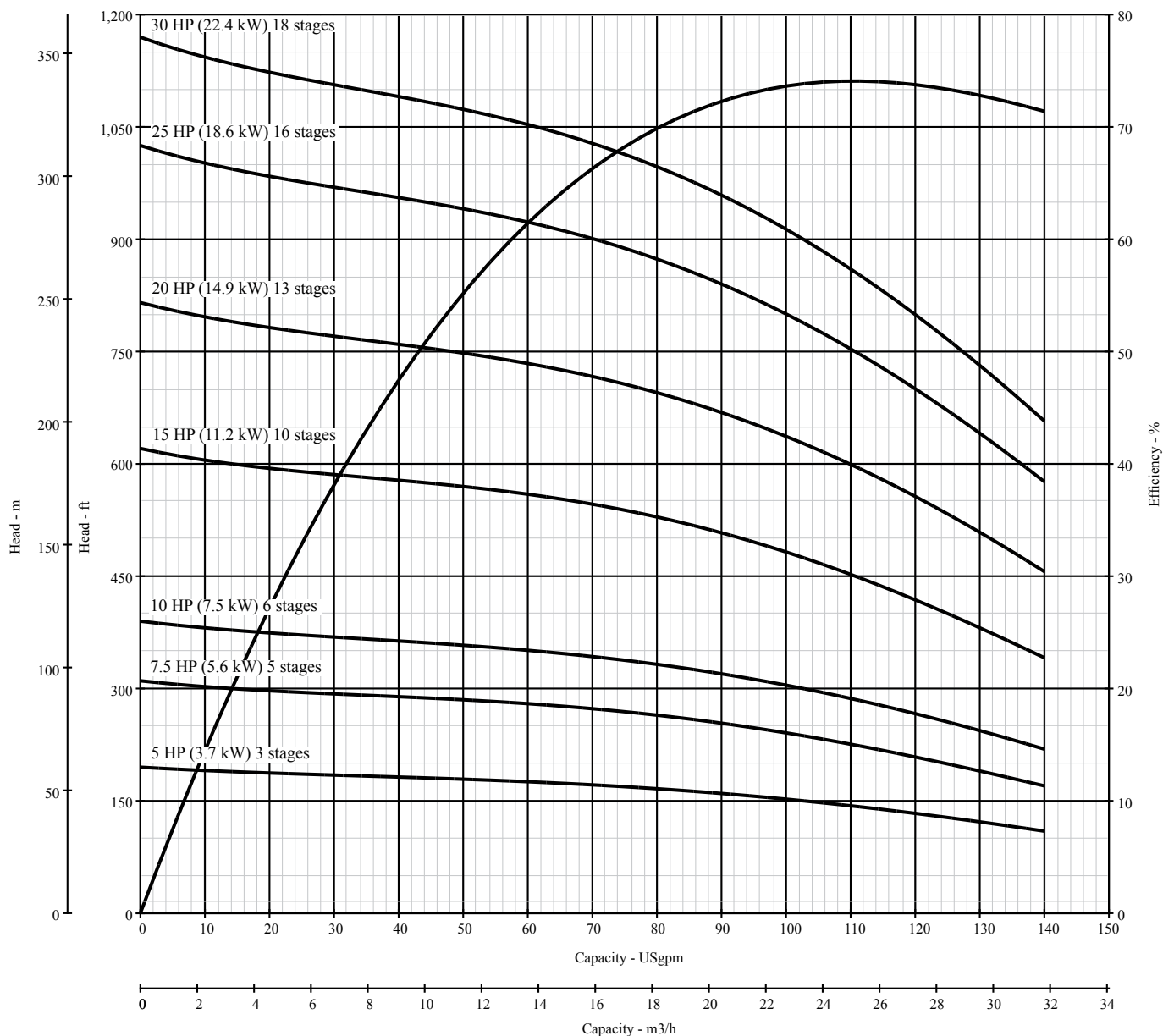
Because we are continuously improving our products and services, Pentair reserves the right to change specifications without prior notice.

# BERKELEY® 5TMH-110

## SUBMERSIBLE TURBINES

Curve 5TMH-110  
 Date 08/01/16  
 Page 1.0  
 Supercedes 08/20/15

Nominal RPM: 3500 (60 Hz)  
 Based on Fresh Water@ 68° F (20° C)  
 Maximum Working Pressure: 735 PSI (50.6 BAR)  
 Standard Catalog Staging  
 Pump Diameter with Cableguard 5.625" (143 mm)

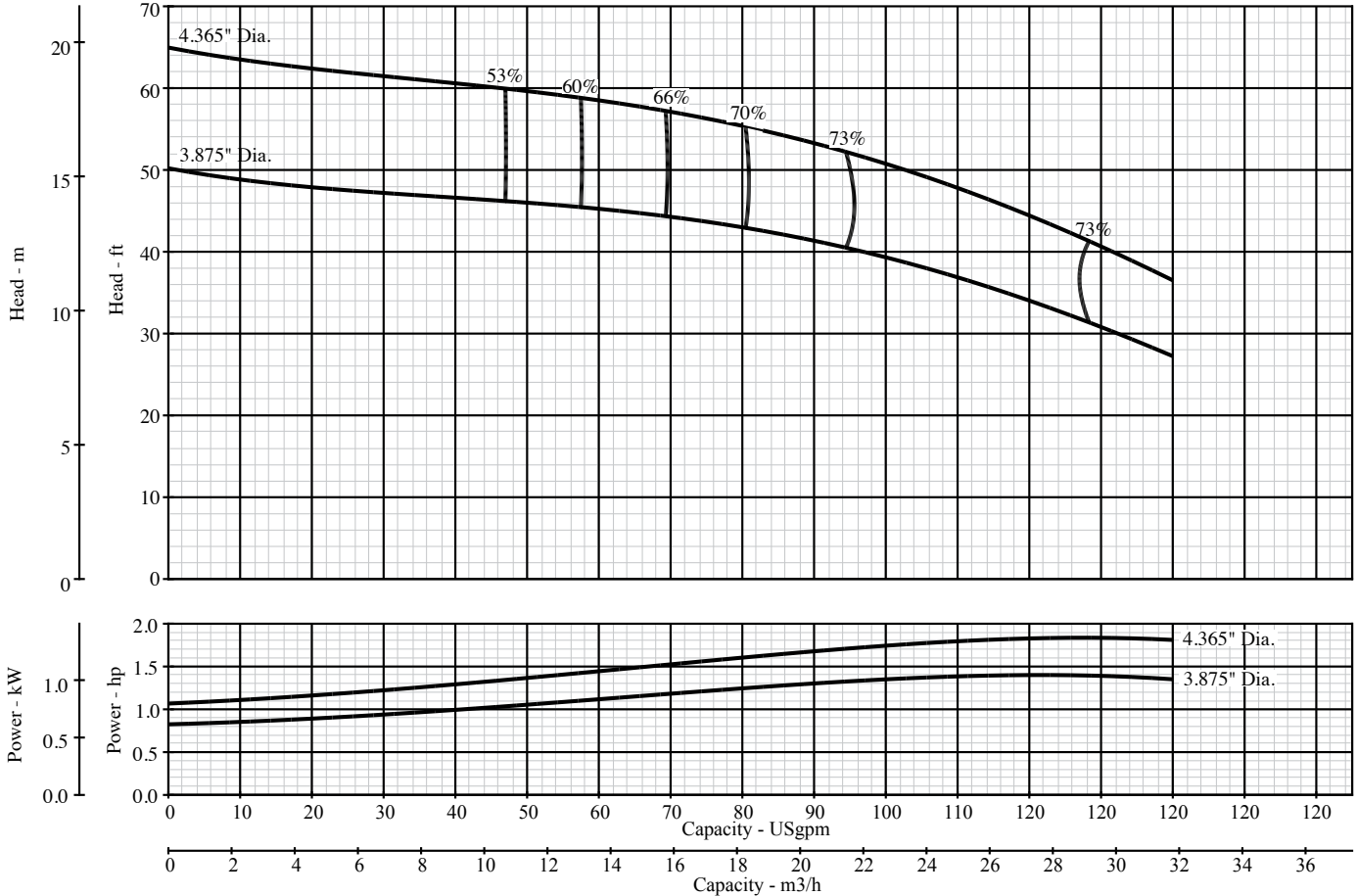


# BERKELEY® 5TMH-110

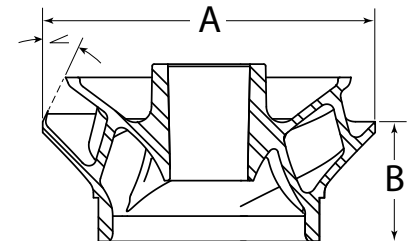
## SUBMERSIBLE TURBINES

Curve 5TMH-110  
 Date 08/01/16v  
 Page 1.0  
 Supercedes 08/20/15

Nominal RPM: **3500**  
 Based on Fresh Water@ 68 deg. F  
 Maximum Working Pressure: 735 PSI (50.6 BAR)



| Part Name                                     | Material           | Reference             |
|---|--------------------|-----------------------|
| Top Bearing                                   | Vesconite®         |                       |
| Discharge Adapter                             | Ductile Iron       | ASTM A536-84 65-45-12 |
| Bowls   | Class 30 Grey Iron | ASTM A48 Class 30     |
| Suction Bracket                               | Ductile Iron       | ASTM A536-84 65-45-12 |
| Bowl Bearing                                  | Rubber             | Neoprene              |
| Impeller Collets                              | Steel              | AISI 1226             |
| Pump Shaft, Shaft Coupling                    | Stainless Steel    | AISI 416 UNS S41600   |
| Upthrust Adjustment, Impeller, Suction Screen | Stainless Steel    | AISI 302 UNS S30400   |
| Cable Guard                                   | Stainless Steel    | AISI 302 UNS S30200   |



| Stages  | Assembled pump length less motor - inches (mm) |
|---|--|
| 1   | 18.7 (475)                                     |
| Each additional stage   | 6.5 (165)                                      |
| Pump Diameter with leadguard: 5.625 inches (143 mm)   |  |
| Refer to the following literature pieces for motor information, including power and length:<br>P10842BK for Pentek® motors, P8174WS for Hitachi® motors |  |

| Trim | "A" Diameter inches (mm) | "B" Height inches (mm) | ∠   |
|------|--------------------------|------------------------|-----|
| "A"  | 4.365" (110.9)           | 1.20" (30.5)           | 24° |
| "C"  | 3.875" (98.4)            | 1.12" (28.5)           | 24° |



293 WRIGHT STREET, DELAVAN, WI 53115 www.BerkeleyPumps.com  
 PH: 888-237-5353 ORDERS FAX: 800-321-8793

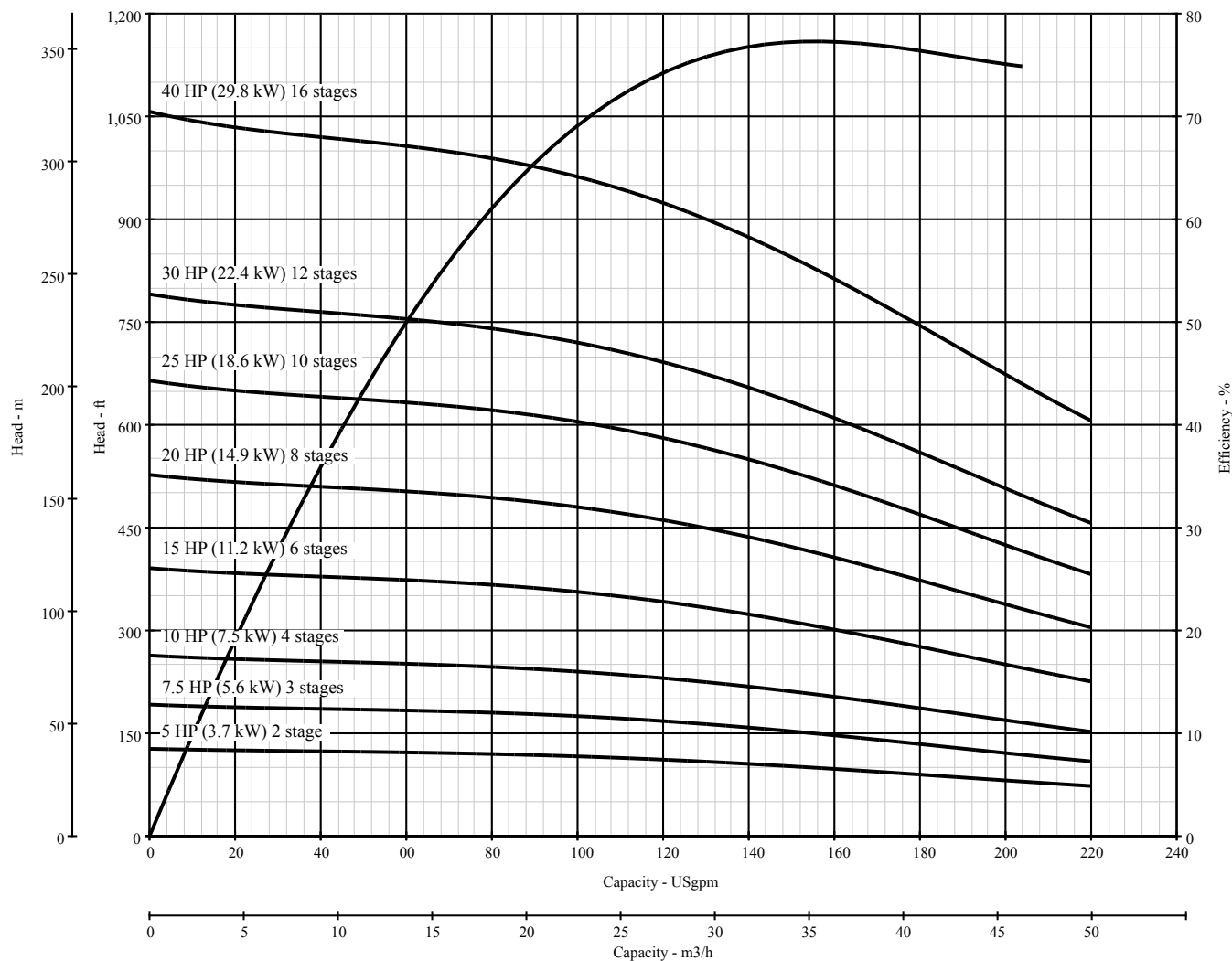
Because we are continuously improving our products and services, Pentair reserves the right to change specifications without prior notice.

# BERKELEY® 5TMH-170

## SUBMERSIBLE TURBINES

Curve 5TMH-170  
 Date 08/01/16  
 Page 1.0  
 Supercedes 08/20/15

Nominal RPM: 3500 (60 hz)  
 Based on Fresh Water@ 68° F (20° C)  
 Maximum Working Pressure: 735 PSI (50.6 BAR)  
 Standard Catalog Staging  
 Pump Diameter with Cableguard 5.625" (143 mm)

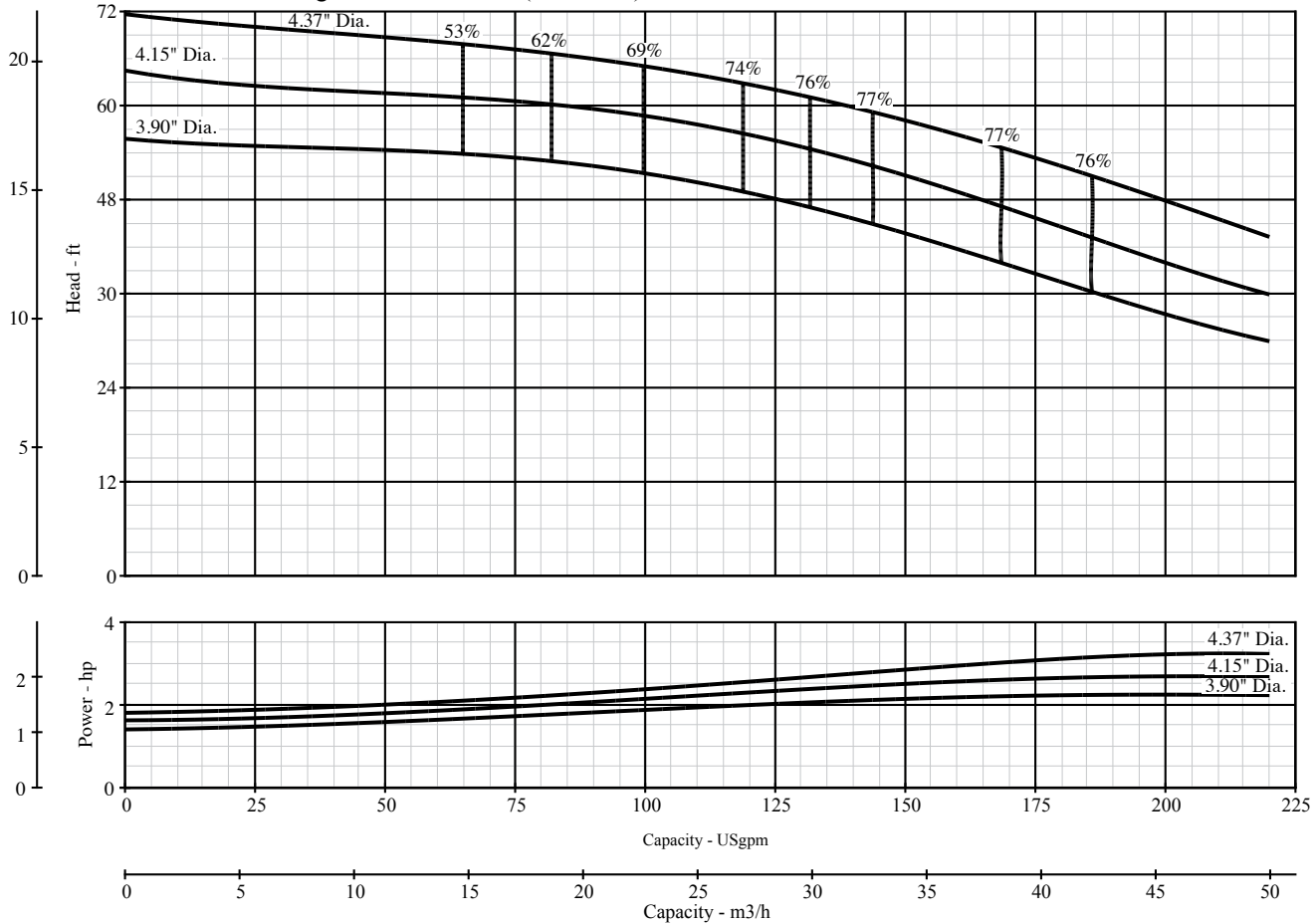


# BERKELEY® 5TMH-170

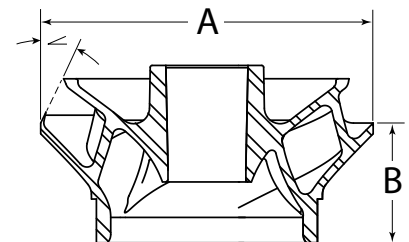
## SUBMERSIBLE TURBINES

Curve 5TMH-170  
 Date 08/01/16  
 Page 1.0  
 Supersedes 08/20/15

Nominal RPM: **3500**  
 Based on Fresh Water@ 68 deg. F  
 Maximum Working Pressure: 735 PSI (50.6 BAR)



| Part Name                                     | Material           | Reference             |
|---|--------------------|-----------------------|
| Top Bearing                                   | Vesconite®         |                       |
| Discharge Adapter                             | Ductile Iron       | ASTM A536-84 65-45-12 |
| Bowls   | Class 30 Grey Iron | ASTM A48 Class 30     |
| Suction Bracket                               | Ductile Iron       | ASTM A536-84 65-45-12 |
| Bowl Bearing                                  | Rubber             | Neoprene              |
| Impeller Collets                              | Steel              | AISI 1226             |
| Pump Shaft, Shaft Coupling                    | Stainless Steel    | AISI 416 UNS S41600   |
| Upthrust Adjustment, Impeller, Suction Screen | Stainless Steel    | AISI 302 UNS S30400   |
| Cable Guard                                   | Stainless Steel    | AISI 302 UNS S30200   |



| Stages  | Assembled pump length less motor - inches (mm) |
|---|--|
| 1   | 18.7 (475)                                     |
| Each additional stage   | 6.5 (165)                                      |
| Pump Diameter with leadguard: 5.625 inches (143 mm)   |  |
| Refer to the following literature pieces for motor information, including power and length:<br>P10842BK for Pentek® motors, P8174WS for Hitachi® motors |  |

| Trim | "A" Diameter inches (mm) | "B" Height inches (mm) | ∠   |
|------|--------------------------|------------------------|-----|
| "A"  | 4.37" (111)              | 1.41" (35.9)           | 30° |
| "B"  | 4.15" (105.4)            | 1.27" (32)             | 30° |
| "C"  | 3.90" (99)               | 1.35" (34)             | 30° |



293 WRIGHT STREET, DELAVAN, WI 53115 www.BerkeleyPumps.com  
 PH: 888-237-5353 ORDERS FAX: 800-321-8793

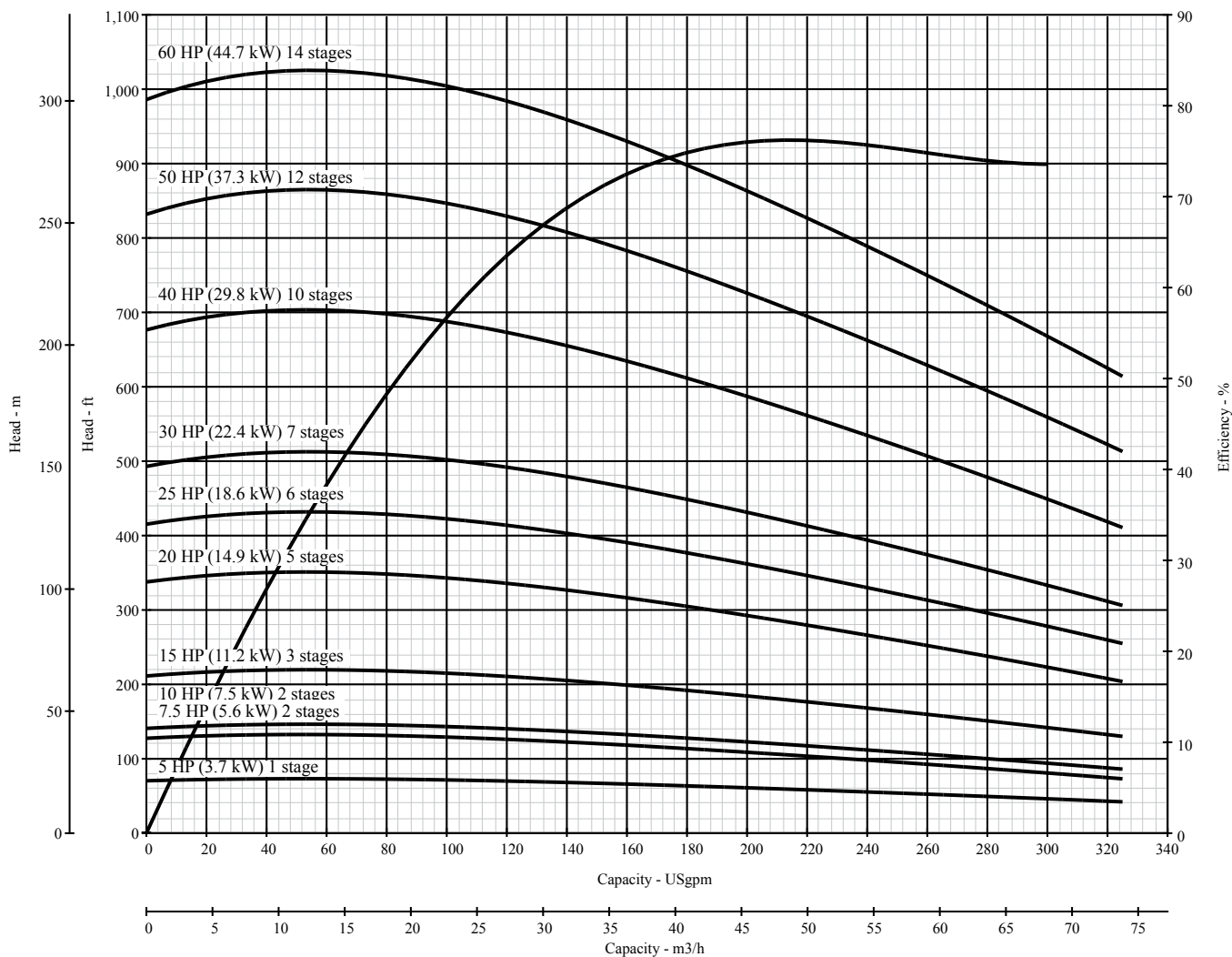
Because we are continuously improving our products and services, Pentair reserves the right to change specifications without prior notice.

# BERKELEY® 5TMH-250

## SUBMERSIBLE TURBINES

Curve 5TMH-250  
 Date 08/01/16  
 Page 1.0  
 Supercedes 08/20/15

Nominal RPM: 3500 (60 hz)  
 Based on Fresh Water@ 68° F (20° C)  
 Maximum Working Pressure: 735 PSI (50.6 BAR)  
 Standard Catalog Staging  
 Pump Diameter with Cableguard .625" (143 mm)

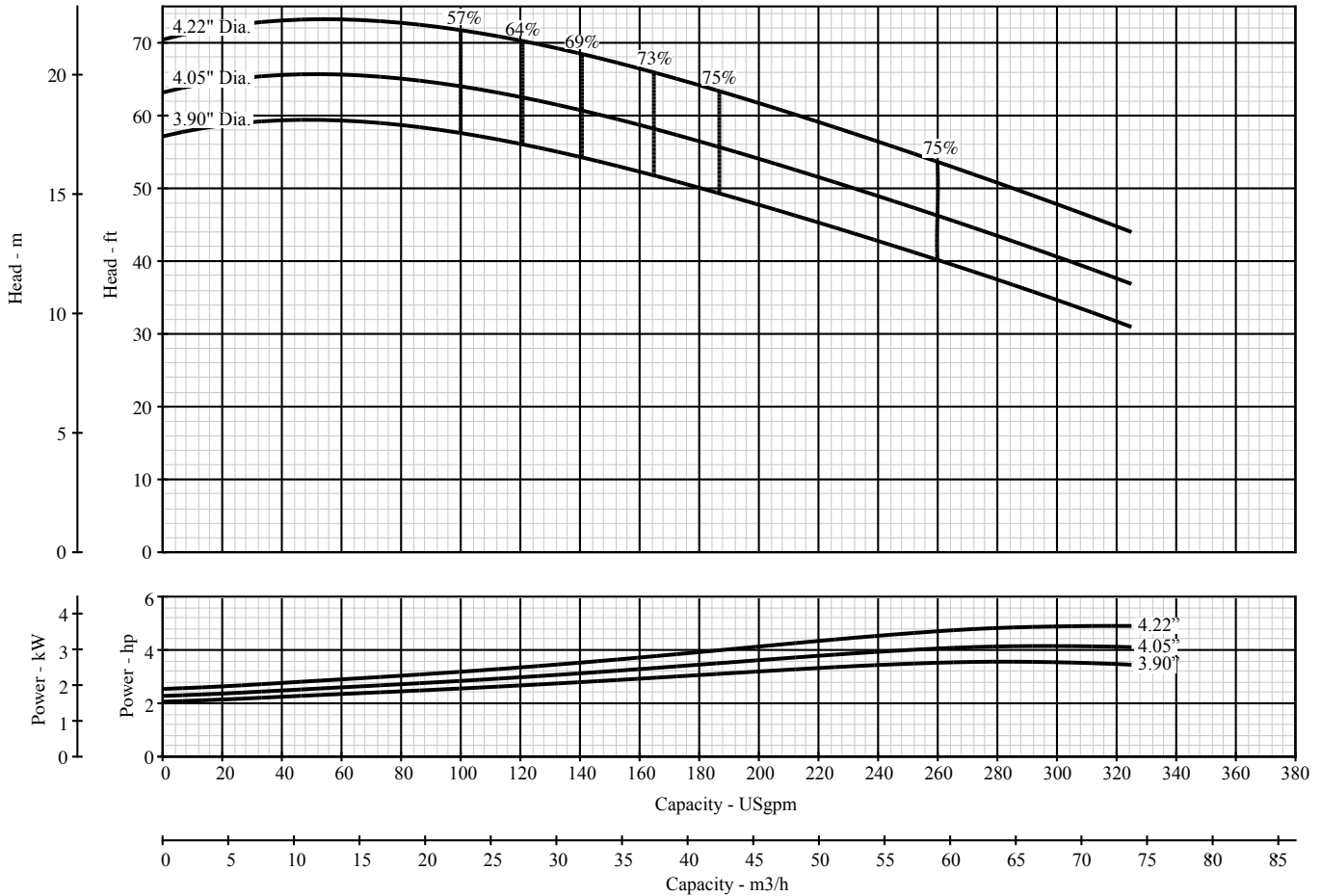


# BERKELEY® 5TMH-250

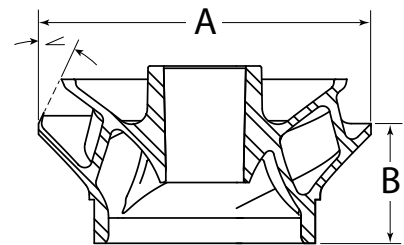
## SUBMERSIBLE TURBINES

Curve 5TMH-250  
 Date 08/01/16  
 Page 1.0  
 Supersedes 08/20/15

Nominal RPM: **3500**  
 Based on Fresh Water@ 68 deg. F  
 Maximum Working Pressure: 735 PSI (50.6 BAR)



| Part Name                                     | Material           | Reference             |
|---|--------------------|-----------------------|
| Top Bearing                                   | Vesconite®         |                       |
| Discharge Adapter                             | Ductile Iron       | ASTM A536-84 65-45-12 |
| Bowls   | Class 30 Grey Iron | ASTM A48 Class 30     |
| Suction Bracket                               | Ductile Iron       | ASTM A536-84 65-45-12 |
| Bowl Bearing                                  | Rubber             | Neoprene              |
| Impeller Collets                              | Steel              | AISI 1226             |
| Pump Shaft, Shaft Coupling                    | Stainless Steel    | AISI 416 UNS S41600   |
| Upthrust Adjustment, Impeller, Suction Screen | Stainless Steel    | AISI 302 UNS S30400   |
| Cable Guard                                   | Stainless Steel    | AISI 302 UNS S30200   |



| Stages  | Assembled pump length less motor – inches (mm) |
|---|--|
| 1   | 17.83 [618]                                    |
| Each additional stage   | 6.5 [165]                                      |
| Pump Diameter with leadguard: 5.625 inches [143 mm]   |  |
| Refer to the following literature pieces for motor information, including power and length:<br>P10842BK for Pentek® motors, P8174WS for Hitachi® motors |  |

| Trim | "A" Diameter inches (mm) | "B" Height inches (mm) | ∠     |
|------|--------------------------|------------------------|-------|
| "A"  | 4.22" (107.1)            | 1.85" (47.0)           | 30.8° |
| "C"  | 4.05" (102.9)            | 1.75" (44.5)           | 30.8° |
| "D"  | 3.90" (99)               | 1.65" (41.9)           | 30.8° |



293 WRIGHT STREET, DELAVAN, WI 53115 www.BerkeleyPumps.com  
 PH: 888-237-5353 ORDERS FAX: 800-321-8793

Because we are continuously improving our products and services, Pentair reserves the right to change specifications without prior notice.

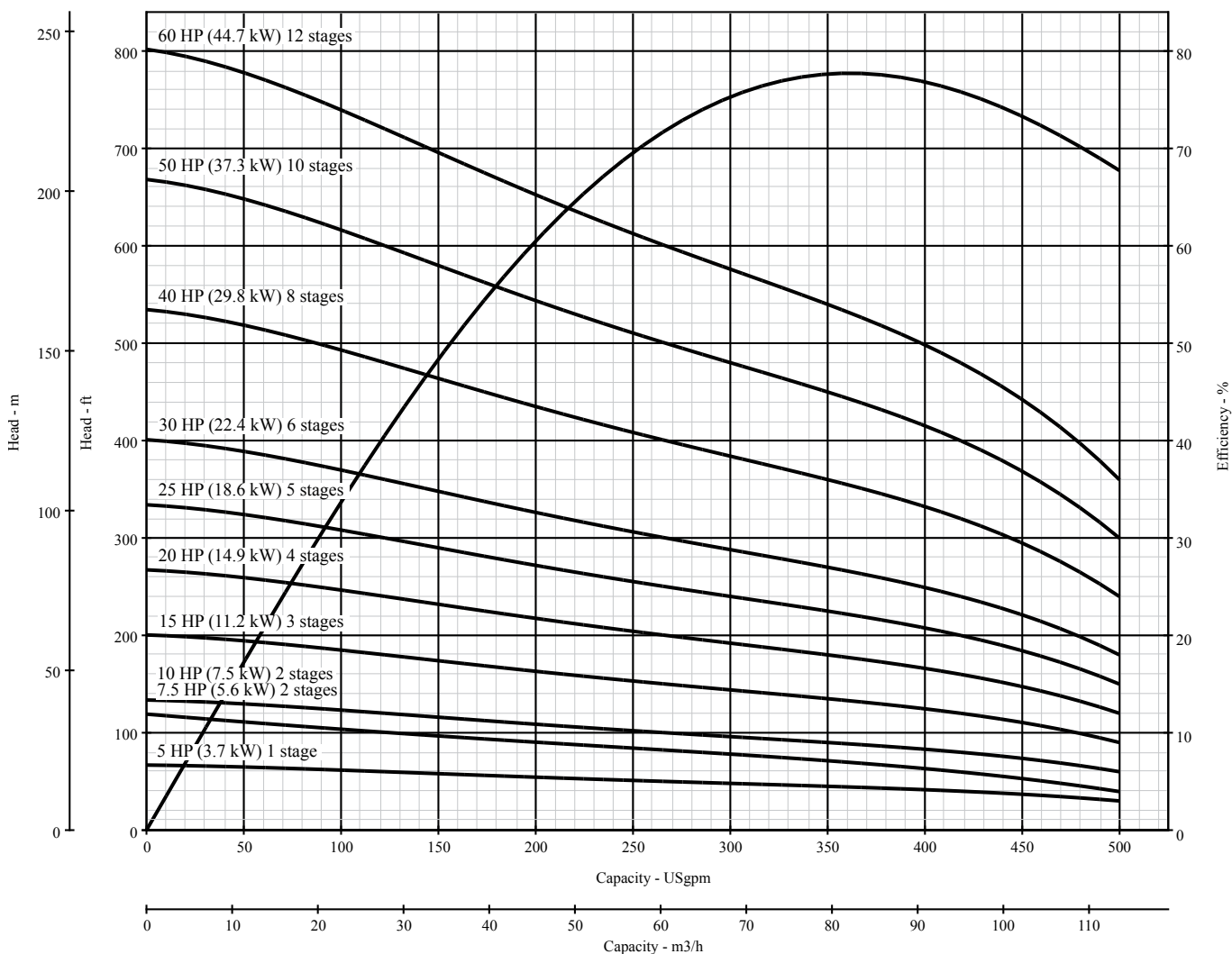


# BERKELEY® 5TMH-375

## SUBMERSIBLE TURBINES

Curve 5TMH-375  
 Date 08/01/16  
 Page 1.0  
 Supersedes 08/20/15

Nominal RPM: 3500 (60 hz)  
 Based on Fresh Water@ 68° F (20° C)  
 Maximum Working Pressure: 735 PSI (50.6 BAR)  
 Standard Catalog Staging  
 Pump Diameter with Cableguard 5.625" (143 mm)

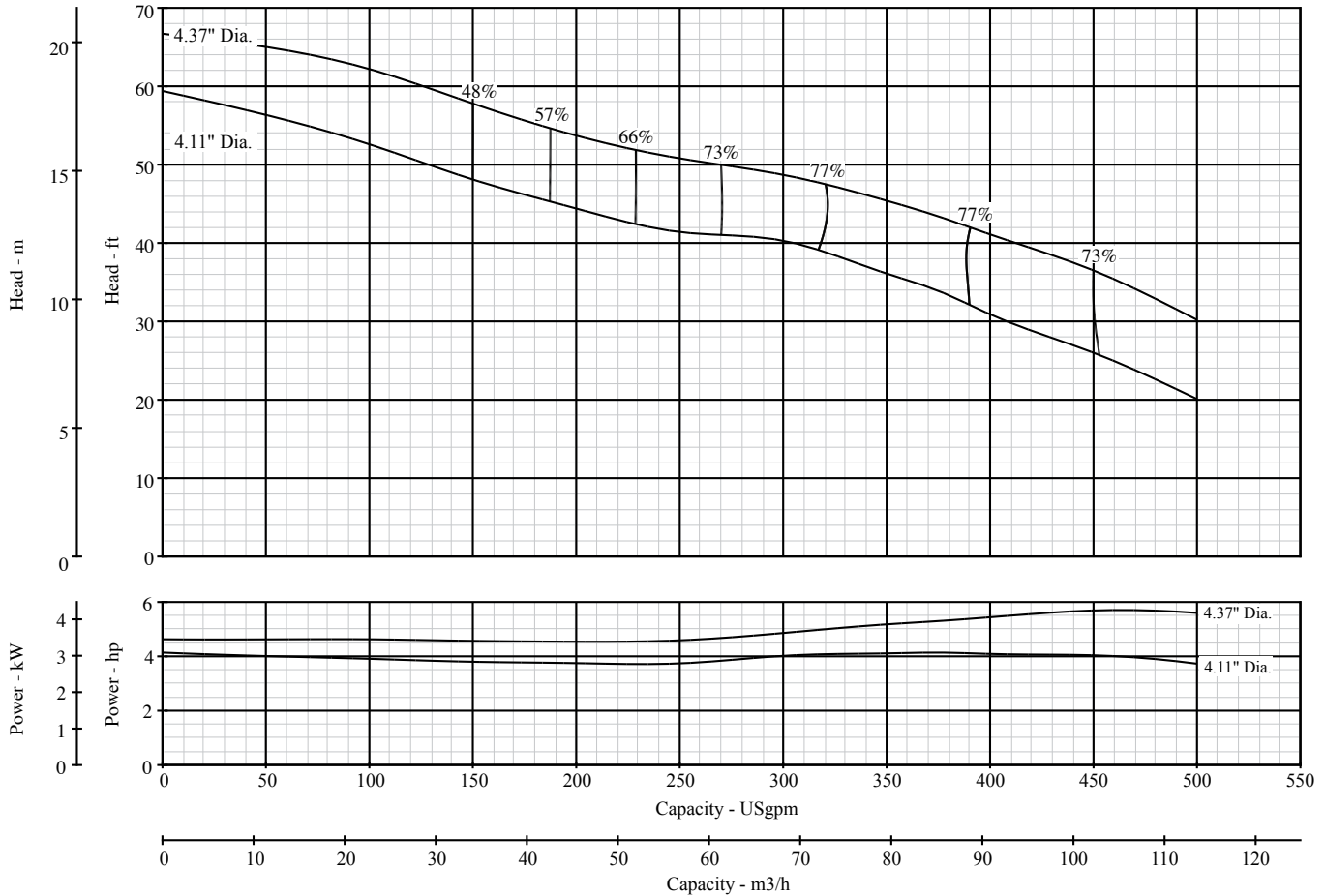


# BERKELEY® 5TMH-375

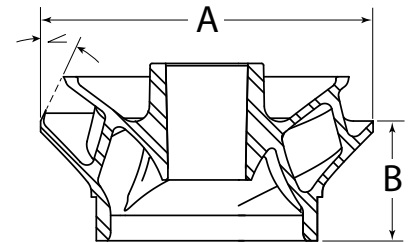
## SUBMERSIBLE TURBINES

Curve 5TMH-375  
 Date 08/01/16  
 Page 1.0  
 Supercedes 08/20/15

Nominal RPM: **3500**  
 Based on Fresh Water@ 68 deg. F  
 Maximum Working Pressure: 735 PSI (50.6 BAR)



| Part Name                                     | Material           | Reference             |
|---|--------------------|-----------------------|
| Top Bearing                                   | Vesconite®         |                       |
| Discharge Adapter                             | Ductile Iron       | ASTM A536-84 65-45-12 |
| Bowls   | Class 30 Grey Iron | ASTM A48 Class 30     |
| Suction Bracket                               | Ductile Iron       | ASTM A536-84 65-45-12 |
| Bowl Bearing                                  | Rubber             | Neoprene              |
| Impeller Collets                              | Steel              | AISI 1226             |
| Pump Shaft, Shaft Coupling                    | Stainless Steel    | AISI 416 UNS S41600   |
| Upthrust Adjustment, Impeller, Suction Screen | Stainless Steel    | AISI 302 UNS S30400   |
| Cable Guard                                   | Stainless Steel    | AISI 302 UNS S30200   |



| Stages  | Assembled pump length less motor - inches (mm) |
|---|--|
| 1   | 18.08 (459)                                    |
| Each additional stage   | 6.75 (171.5)                                   |
| Pump Diameter with leadguard: 5.625 inches (143 mm)   |  |
| Refer to the following literature pieces for motor information, including power and length:<br>P10842BK for Pentek® motors, P8174WS for Hitachi® motors |  |

| Trim | "A" Diameter inches (mm) | "B" Height inches (mm) | ∠   |
|------|--------------------------|------------------------|-----|
| "A"  | 4.37" (111)              | 1.925" (48.9)          | 40° |
| "B"  | 4.11" (104.4)            | 1.71" (43.4)           | 40° |



293 WRIGHT STREET, DELAVAN, WI 53115 www.BerkeleyPumps.com  
 PH: 888-237-5353 ORDERS FAX: 800-321-8793

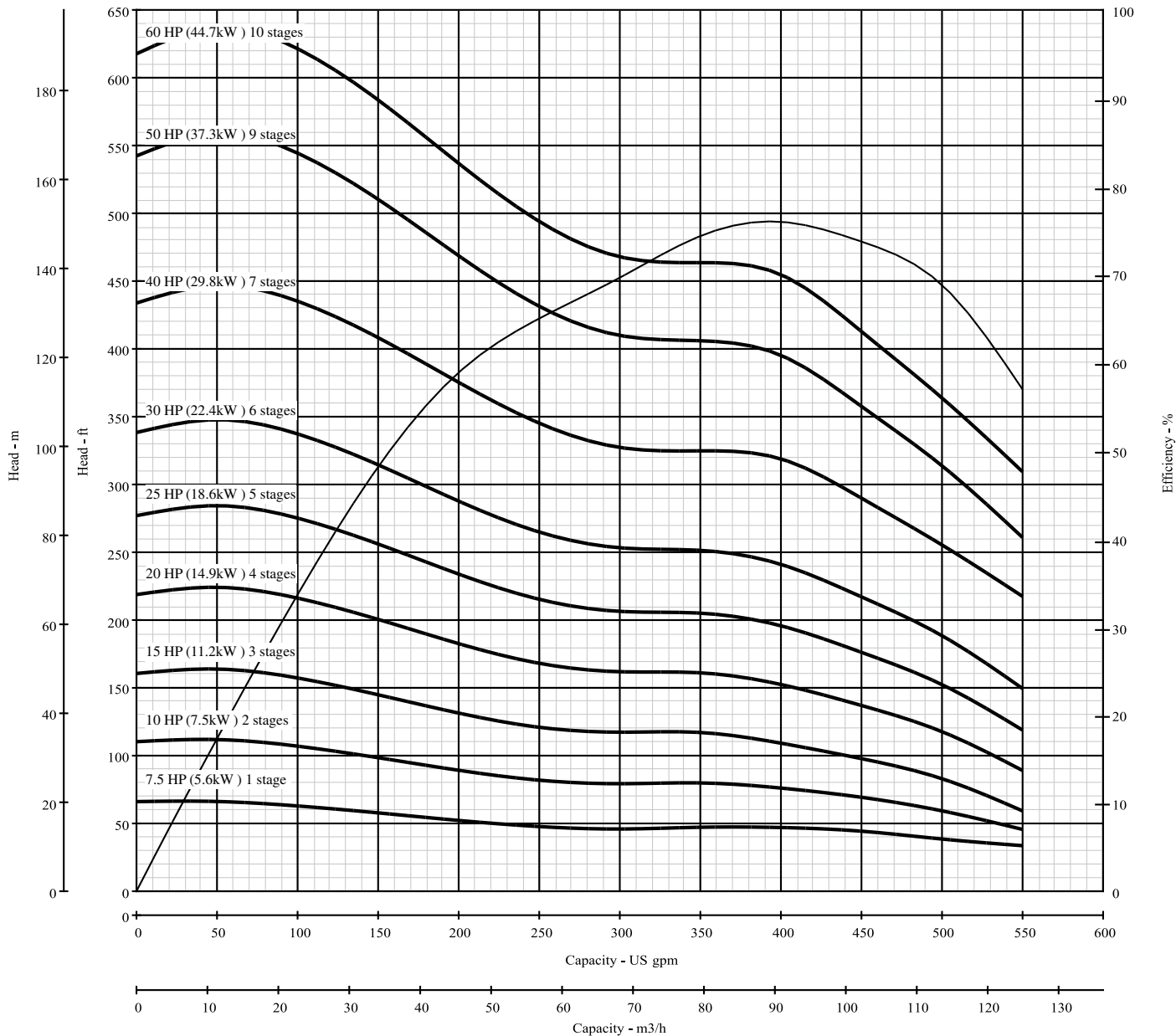
Because we are continuously improving our products and services, Pentair reserves the right to change specifications without prior notice.

# BERKELEY® 5TMH-425

## SUBMERSIBLE TURBINES

Curve 5TMH-425  
 Date 01/01/16  
 Page 6.0  
 Supercedes New

Nominal RPM: 3500 (60 hz)  
 Based on Fresh Water@ 68° F (20° C)  
 Maximum Working Pressure: 735 PSI (50.6 BAR)  
 Standard Catalog Staging  
 Pump Diameter with Cableguard 5.60" (142 mm)

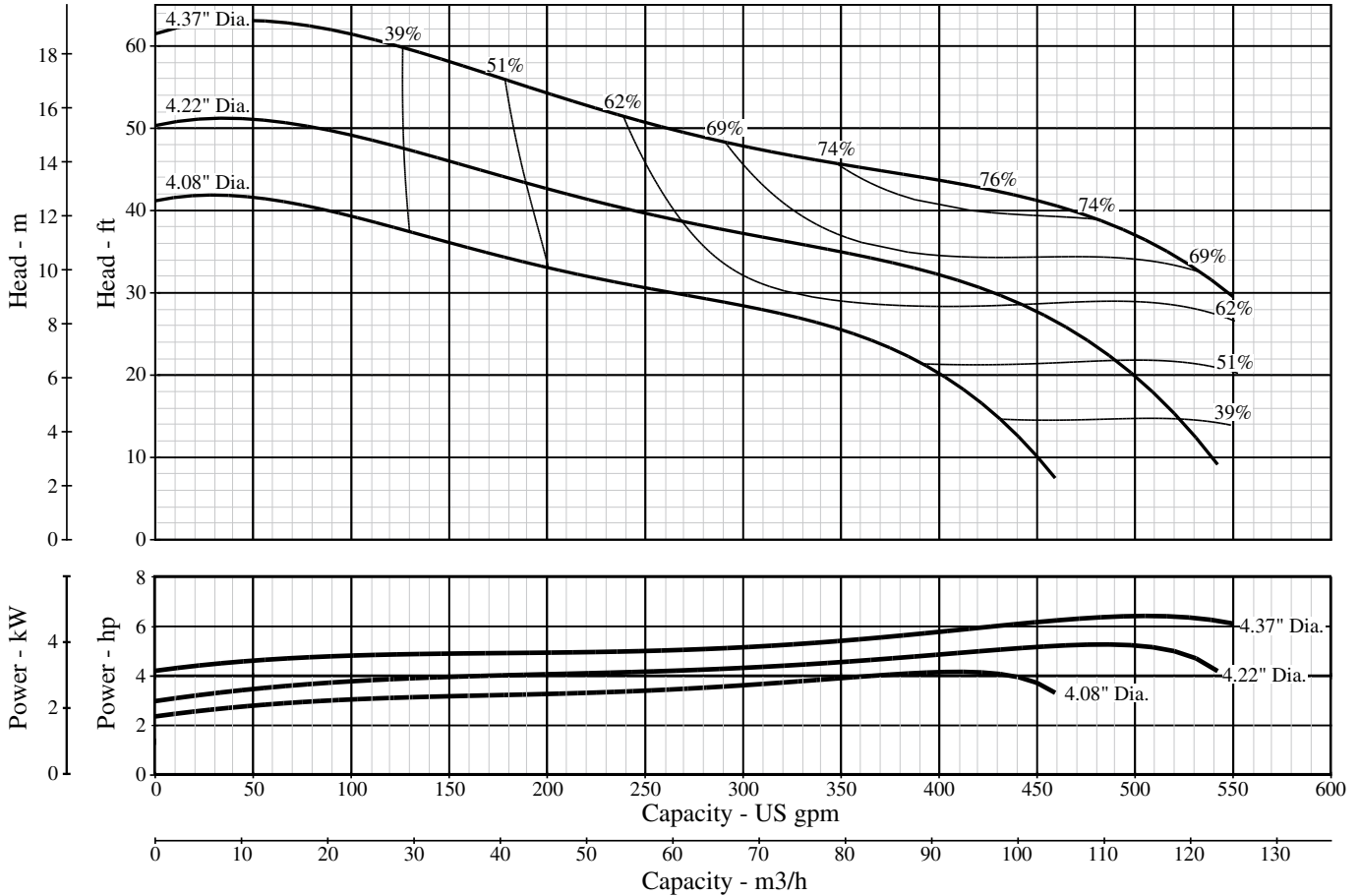


# BERKELEY® 5TMH-425

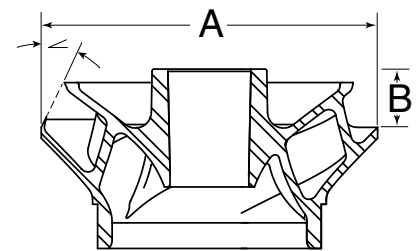
## SUBMERSIBLE TURBINES

Curve 5TMH-425  
 Date 01/01/16  
 Page 6.0  
 Supersedes New

Nominal RPM: **3500**  
 Based on Fresh Water@ 68 deg. F  
 Maximum Working Pressure: 735 PSI (50.6 BAR)



| Part Name                                     | Material           | Reference             |
|---|--------------------|-----------------------|
| Top Bearing                                   | Vesconite®         |                       |
| Discharge Adapter                             | Ductile Iron       | ASTM A536-84 65-45-12 |
| Bowls   | Class 30 Grey Iron | ASTM A48 Class 30     |
| Suction Bracket                               | Ductile Iron       | ASTM A536-84 65-45-12 |
| Bowl Bearing                                  | Rubber             | Neoprene              |
| Impeller Collets                              | Steel              | AISI 1226             |
| Pump Shaft, Shaft Coupling                    | Stainless Steel    | AISI 416 UNS S41600   |
| Upthrust Adjustment, Impeller, Suction Screen | Stainless Steel    | AISI 302 UNS S30400   |
| Cable Guard                                   | Stainless Steel    | AISI 302 UNS S30200   |



| Stages  | Assembled pump length less motor - inches (mm) |
|---|--|
| 1   | 17.73" (450 mm)                                |
| Each additional stage   | 7.56" (192 mm)                                 |
| Pump Diameter with leadguard: 5.6 inches (142 mm)   |  |
| Refer to the following literature pieces for motor information, including power and length:<br>P10842BK for Pentek® motors, P8174WS for Hitachi® motors |  |

| Trim | "A" Diameter inches (mm) | "B" Height inches (mm) | ∠   |
|------|--------------------------|------------------------|-----|
| "A"  | 4.37 (111)               | 1.258 (31.95)          | 40° |
| "B"  | 4.22 (104.4)             | 1.408 (35.76)          | 40° |
| "C"  | 4.080 (103.63)           | 1.548 (39.32)          | 40° |



293 WRIGHT STREET, DELAVAN, WI 53115 www.BerkeleyPumps.com  
 PH: 888-237-5353 ORDERS FAX: 800-321-8793

Because we are continuously improving our products and services, Pentair reserves the right to change specifications without prior notice.