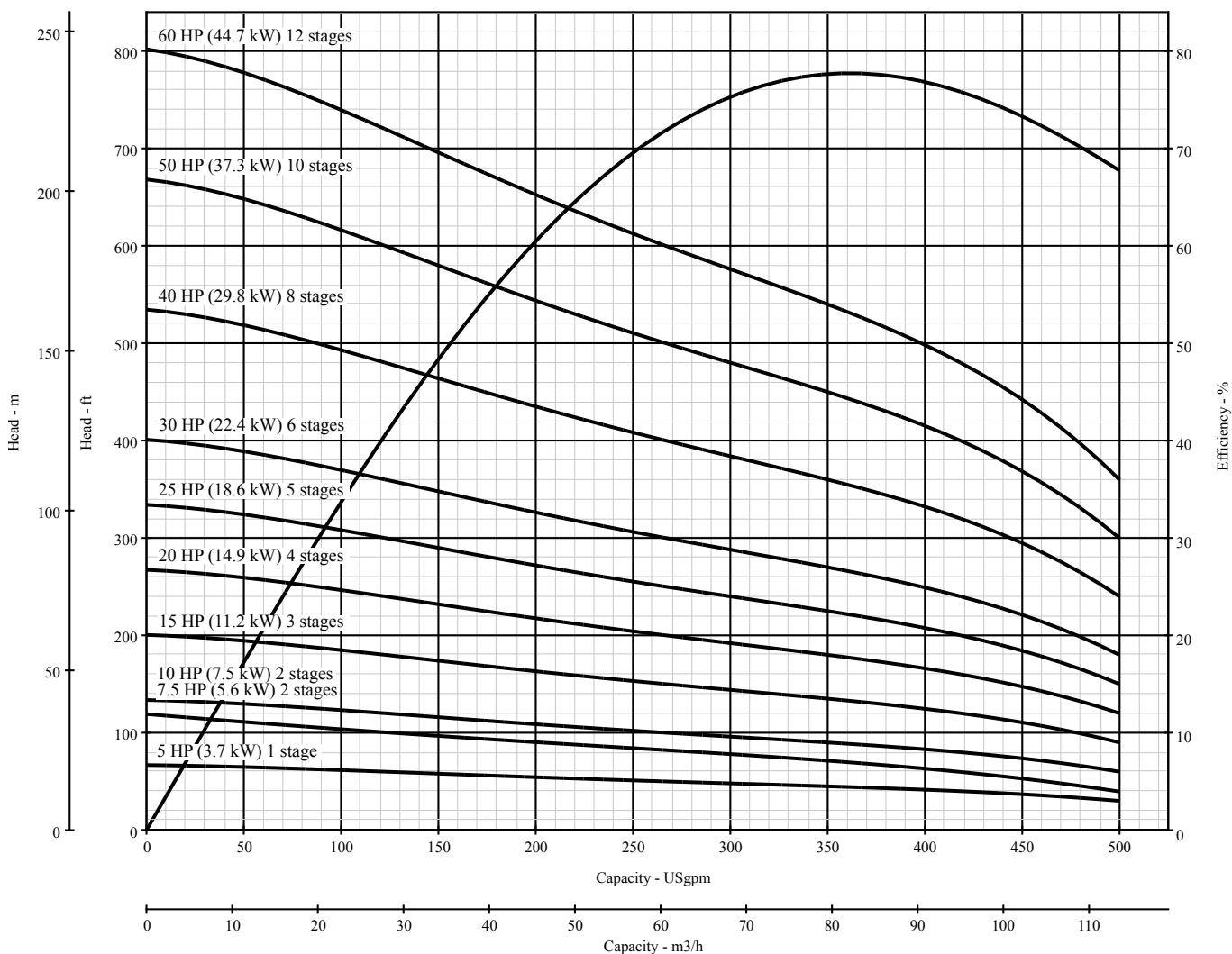


# BERKELEY® 5TMH-375

## SUBMERSIBLE TURBINES

Curve 5TMH-375  
 Date 08/01/16  
 Page 1.0  
 Supersedes 08/20/15

Nominal RPM: 3500 (60 hz)  
 Based on Fresh Water@ 68° F (20° C)  
 Maximum Working Pressure: 735 PSI (50.6 BAR)  
 Standard Catalog Staging  
 Pump Diameter with Cableguard 5.625" (143 mm)

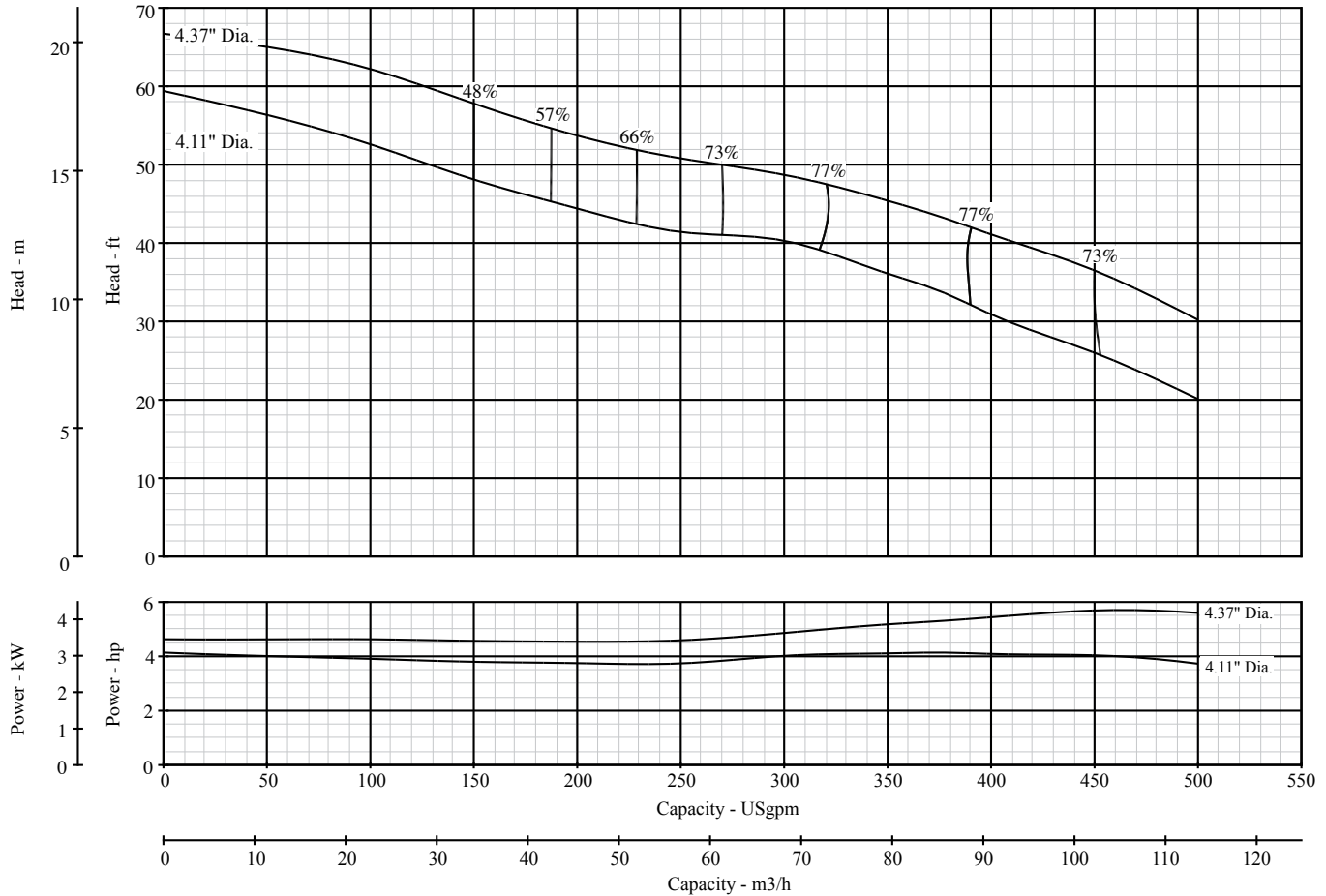


# BERKELEY® 5TMH-375

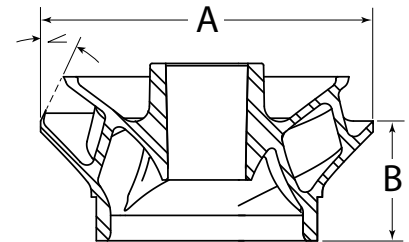
## SUBMERSIBLE TURBINES

Curve 5TMH-375  
 Date 08/01/16  
 Page 1.0  
 Supercedes 08/20/15

Nominal RPM: **3500**  
 Based on Fresh Water@ 68 deg. F  
 Maximum Working Pressure: 735 PSI (50.6 BAR)



Part Name	Material	Reference
Top Bearing	Vesconite®	
Discharge Adapter	Ductile Iron	ASTM A536-84 65-45-12
Bowls	Class 30 Grey Iron	ASTM A48 Class 30
Suction Bracket	Ductile Iron	ASTM A536-84 65-45-12
Bowl Bearing	Rubber	Neoprene
Impeller Collets	Steel	AISI 1226
Pump Shaft, Shaft Coupling	Stainless Steel	AISI 416 UNS S41600
Upthrust Adjustment, Impeller, Suction Screen	Stainless Steel	AISI 302 UNS S30400
Cable Guard	Stainless Steel	AISI 302 UNS S30200



Stages	Assembled pump length less motor - inches (mm)
1	18.08 (459)
Each additional stage	6.75 (171.5)
Pump Diameter with leadguard: 5.625 inches (143 mm)	
Refer to the following literature pieces for motor information, including power and length: P10842BK for Pentek® motors, P8174WS for Hitachi® motors	

Trim	"A" Diameter inches (mm)	"B" Height inches (mm)	∠
"A"	4.37" (111)	1.925" (48.9)	40°
"B"	4.11" (104.4)	1.71" (43.4)	40°



293 WRIGHT STREET, DELAVAN, WI 53115 www.BerkeleyPumps.com  
 PH: 888-237-5353 ORDERS FAX: 800-321-8793

Because we are continuously improving our products and services, Pentair reserves the right to change specifications without prior notice.