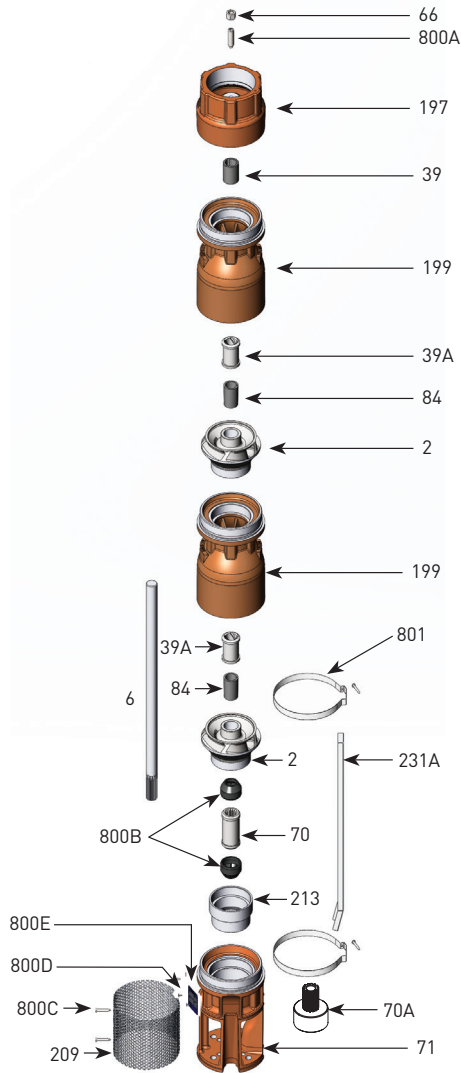


# BERKELEY® 5TMH SERIES

## 250 GPM, 60HZ, NPT

Section	ST-5TMH
Page	1.0
Date	July 15, 2015
Supersedes	04/06/15



Item Number	Part Number	Description	Required Qty
2	See Table 3	Impeller	1 Per Stage
6	See Table 4	Shaft	1
39	M15886	Vesconite® Bearing	1
39A	S13636	Neoprene Bearing	1 Per Stage
66	M15881	Upthrust Nut, 1/2-13 LH	1
70	M15872	6" Motor Coupling	1
70A	M15847	4" Motor Coupling	1
71	M16053	5TMH 4"/6" Motor Suction Bracket	1
84	S05301	1" Collet	1 Per Stage
199	B86511	5TMH-250 Bowl (incl. Neoprene Bearing)	1 Per Stage
197	M16055	5TMH Discharge, 4" NPT	1
209	M16056	Suction Screen	1
213	M16274	Intake Adapter Insert	1
231A	308666000	Cable Guard, 12' material	1
800A	M15882	Upthrust Screw, 1/2-13 LH	1
800B	M15874	Sand Boot	2
800C	M15937	Screen Screw, 8-32 x 3/8 Panhead	2
800D	M10199	Rivet, 3/32	2
800E	M09653PNR	Nameplate	1
801	M15878	5TMH Cable Guard Clamp	2
Not Illustrated	M09970	Tag, Upthrust Adjustment	1
Not Illustrated	B86187	Bolt Kit, 6" Motor	1
Not Illustrated	M15847	Adapter Kit, 4" Motor	1
Not Illustrated	BE972	Owner's Manual	1

Note 1: Motor bracket is dual machined for 4" and 6" motors  
 Note 2: B86418 includes items 39, 66, 197, 800A  
 Note 3: B86510 includes 71, 213

Item Number	Part Number	Description	Required Qty
39A	S13636	Neoprene Bearing	1 Per Stage
	S10708	Bronze Bearing	
199	B86511	5TMH-250 Bowl (incl. Neoprene Bearing)	1 Per Stage
84	S05301	1" Collet	1 Per Stage
2	See Table 3	Impeller	1 Per Stage

Note 4: Bronze bearing may be used in place of the standard Neoprene Bearing.

Item Number	Part Number	Description	Required Qty
2	M16041	5TMH-250 "A" Impeller 4.220"	See Table 4
2	M16597	5TMH-250 "C" Impeller 4.050"	
2	M16598	5TMH-250 "D" Impeller 3.900"	

TABLE 4 - 60 Hz Staging Requirements Build Table

Series	HP/kW	Stages	"A" Trim	"C" Trim	"D" Trim	416 SS shaft		Ion-nitride shaft		Shaft Length (in/mm)	Cable Guard Length <sup>7</sup>	Assembled pump length (motor not included)
						Pump catalog number	416 SS Shaft p/n <sup>6</sup>	Pump catalog number	Ion Nitride Shaft p/n <sup>6</sup>			
5TMH5-250	5/3.7	1	1			B86552	M16218	B86552N	M16232	12.5 in/318 mm	9 in/229 mm	17.83 in/453 mm
5TMH7.5-250	7.5/5.6	2	1		1	B86553	M16219	B86553N	M16233	19 in/483 mm	15.5 in/394 mm	24.33 in/618 mm
5TMH10-250	10/7.5	2	2			B86554	M16219	B86554N	M16233	19 in/483 mm	15.5 in/394 mm	24.33 in/618 mm
5TMH15-250	15/11.2	3	3			B86555	M16220	B86555N	M16234	25.5 in/648 mm	22 in/559 mm	30.83 in/784 mm
5TMH20-250	20/14.9	5	3	2		B86843	M16222	B86843N	M16236	38.5 in/978 mm	35 in/889 mm	43.83 in/1114 mm
5TMH25-250	25/18.6	6	5	1		B86844	M16223	B86844N	M16237	45 in/1143 mm	41.5 in/1055 mm	50.33 in/1279 mm
5TMH30-250	30/22.4	7	7			B86845	M16224	B86845N	M16238	51.5 in/1309 mm	48 in/1220 mm	56.83 in/1444 mm
5TMH40-250	40/29.8	10	7	2	1	B86846	M16227	B86846N	M16241	71 in/1804 mm	67.5 in/1715 mm	76.33 in/1939 mm
5TMH50-250	50/37.3	12	11		1	B86847	M16228	B86847N	M16242	84 in/2134 mm	80.5 in/2045 mm	89.33 in/2269 mm
5TMH60-250	60/44.7	14	14			B86848	M16608	B86848N	M16614	97 in/2464 mm	93.5 in/2375 mm	102.33 in/2600 mm

Note 5: Effective assembled pump diameter with cable guard lying flat against pump is 5.625 inches  
 Note 6: 4" and 6" pumps use the same shaft and cable guards.  
 Note 7: Cable Guard 308666000 sold in 12' (3.66m) lengths only.



293 WRIGHT STREET, DELAVAN, WI 53115 www.BerkeleyPumps.com PH: 888-237-5353 ORDERS FAX: 800-321-8793  
 Because we are continuously improving our products and services, Pentair reserves the right to change specifications without prior notice.