

BERKELEY® 5TMH SERIES

170 GPM, 60HZ, NPT

Section	ST-5TMH
Page	1.0
Date	July 15, 2015
Supersedes	04/06/15

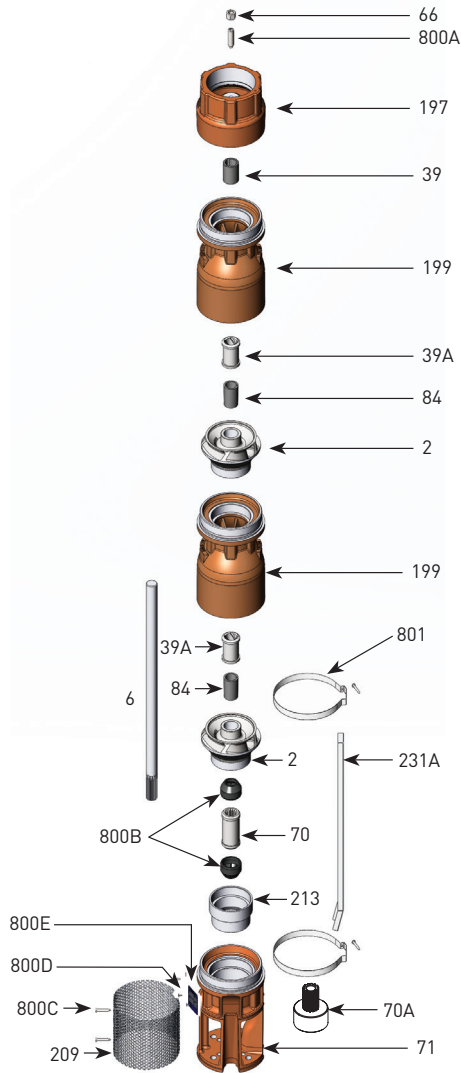


TABLE 1 - 5TMH-170 Common Parts Group

Item Number	Part Number	Description	Required Qty
2	See Table 3	Impeller	1 Per Stage
6	See Table 4	Shaft	1
39	M15886	Vesconite® Bearing	1
39A	S13636	Neoprene Bearing	1 Per Stage
66	M15881	Upthrust Nut, 1/2-13 LH	1
70	M15872	6" Motor Coupling	1
70A	M15847	4" Motor Coupling	1
71	M16053	5TMH 4"/6" Motor Suction Bracket	1
84	S05301	1" Collet	1 Per Stage
199	B86615	5TMH-110/170 Bowl (incl. Neoprene Bearing)	1 Per Stage
197	M16054	5TMH Discharge, 3" NPT	1
209	M16056	Suction Screen	1
213	M16273	Intake Adapter Insert	1
231A	308666000	Cable Guard, 12" material	1
800A	M15882	Upthrust Screw, 1/2-13 LH	1
800B	M15874	Sand Boot	2
800C	M15937	Screen Screw, 8-32 x 3/8 Panhead	2
800D	M10199	Rivet, 3/32	2
800E	M09653PNR	Nameplate	1
801	M15878	5TMH Cable Guard Clamp	2
Not Illustrated	M09970	Tag, Upthrust Adjustment	1
Not Illustrated	B86187	Bolt Kit, 6" Motor	1
Not Illustrated	M15847	Adapter Kit, 4" Motor	1
Not Illustrated	BE972	Owner's Manual	1

Note 1: Motor bracket is dual machined for 4" and 6" motors
 Note 2: B86420 includes items 39, 66, 197, 800A
 Note 3: B86614 includes 71, 213

TABLE 2 - Additional Staging

Item Number	Part Number	Description	Required Qty
39A	S13636	Neoprene Bearing	1 Per Stage
	S10708	Bronze Bearing	
199	B86615	5TMH-110/170 Bowl (incl. Neoprene Bearing)	1 Per Stage
84	S05301	1" Collet	1 Per Stage
2	See Table 3	Impeller	1 Per Stage

Note 4: Bronze bearing may be used in place of the standard Neoprene Bearing.

TABLE 3

Item Number	Part Number	Description	Required Qty
2	M16037	5TMH-170 "A" Impeller 4.370"	See Table 4
2	M16038	5TMH-170 "B" Impeller 4.150"	
2	M16039	5TMH-170 "C" Impeller 3.900"	

TABLE 4 - 60 Hz Staging Requirements Build Table

Series	HP/kW	Stages	"A" Trim	"B" Trim	"C" Trim	416 SS shaft		Ion-nitride shaft		Shaft Length (in/mm)	Cable Guard Length ⁷	Assembled pump length (motor not included)
						Pump catalog number	416 SS Shaft p/n ⁶	Pump catalog number	Ion Nitride Shaft p/n ⁶			
5TMH5-170	5/3.7	2	1		1	B86588	M16219	B86588N	M16233	19 in/483 mm	15.5 in/394 mm	25.2 in/641 mm
5TMH7.5-170	7.5/5.6	3	1	1	1	B86589	M16220	B86589N	M16234	25.5 in/648 mm	22 in/559 mm	31.7 in/806 mm
5TMH10-170	10/7.5	4	2	1	1	B86590	M16221	B86590N	M16235	32 in/813 mm	28.5 in/724 mm	38.2 in/971 mm
5TMH15-170	15/11.2	6	3	1	2	B86591	M16223	B86591N	M16237	45 in/1143 mm	41.5 in/1055 mm	51.2 in/1301 mm
5TMH20-170	20/14.9	8	4	2	2	B86592	M16225	B86592N	M16239	58 in/1474 mm	54.5 in/1385 mm	64.2 in/1631 mm
5TMH25-170	25/18.6	10	4	5	1	B86593	M16227	B86593N	M16241	71 in/1804 mm	67.5 in/1715 mm	77.2 in/1961 mm
5TMH30-170	30/22.4	12	6	3	3	B86594	M16228	B86594N	M16242	84 in/2134 mm	80.5 in/2045 mm	90.2 in/2292 mm
5TMH40-170	40/29.8	16	6	8	2	B86595	M16230	B86595N	M16244	110 in/2794 mm	106.5 in/2706 mm	116.2 in/2952 mm

Note 5: Effective assembled pump diameter with cable guard lying flat against pump is 5.625 inches
 Note 6: 4" and 6" pumps use the same shaft and cable guards.
 Note 7: Cable Guard 308666000 sold in 12' (3.66m) lengths only.



293 WRIGHT STREET, DELAVAN, WI 53115 www.BerkeleyPumps.com PH: 888-237-5353 ORDERS FAX: 800-321-8793
 Because we are continuously improving our products and services, Pentair reserves the right to change specifications without prior notice.