

BERKELEY® 5TMH SERIES

110 GPM, 60HZ, NPT

Section	ST-5TMH
Page	1.0
Date	July 20, 2015
Supersedes	04/06/15

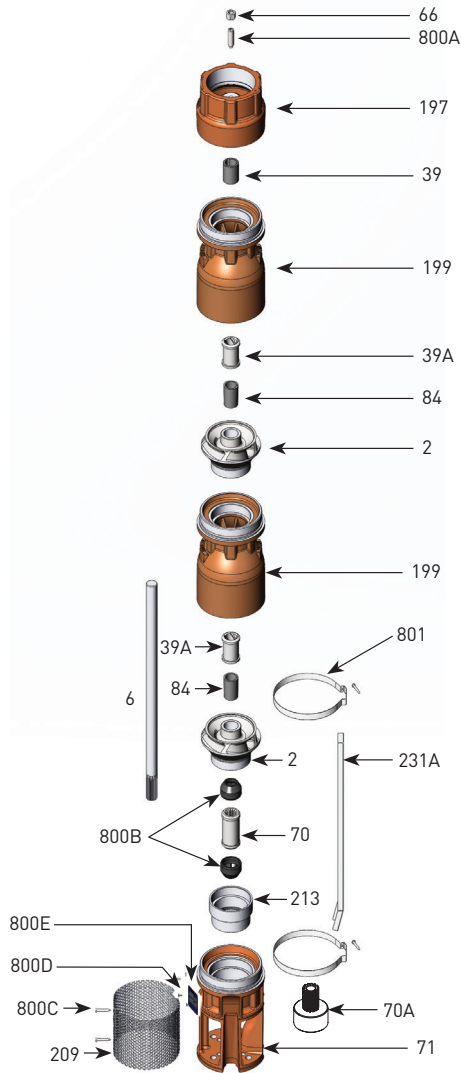


TABLE 1 - 5TMH-110 Common Parts Group

Item Number	Part Number	Description	Required Qty
2	See Table 3	Impeller	1 Per Stage
6	See Table 4	Shaft	1
39	M15886	Vesconite® Bearing	1
39A	S13636	Neoprene Bearing	1 Per Stage
66	M15881	Upthrust Nut, 1/2-13 LH	1
70	M15872	6" Motor Coupling	1
70A	M15847	4" Motor Coupling	1
71	M16053	5TMH 4"/6" Motor Suction Bracket	1
84	S05301	1" Collet	1 Per Stage
199	B86615	5TMH-110/170 Bowl (incl. Neoprene Bearing)	1 Per Stage
197	M16054	5TMH Discharge, NPT	1
209	M16056	Suction Screen	1
213	M16273	Intake Adapter Insert	1
231A	308666000	Cable Guard, 12" material	1
800A	M15882	Upthrust Screw, 1/2-13 LH	1
800B	M15874	Sand Boot	2
800C	M15937	Screen Screw, 8-32 x 3/8 Panhead	2
800D	M10199	Rivet, 3/32	2
800E	M09653PNR	Nameplate	1
801	M15878	5TMH Cable Guard Clamp	2
Not Illustrated	M09970	Tag, Upthrust Adjustment	1
Not Illustrated	B86187	Bolt Kit, 6" Motor	1
Not Illustrated	M15847	Adapter Kit, 4" Motor	1
Not Illustrated	BE972	Owner's Manual	1

Note 1: Motor bracket is dual machined for 4" and 6" motors
 Note 2: B86420 includes items 39, 66, 197, 800A
 Note 3: B86614 includes 71, 213

TABLE 2 - Additional Staging

Item Number	Part Number	Description	Required Qty
39A	S13636	Neoprene Bearing	1 Per Stage
	S10708	Bronze Bearing	
199	B86615	5TMH-110/170 Bowl (incl. Neoprene Bearing)	1 Per Stage
84	S05301	1" Collet	1 Per Stage
2	See Table 3	Impeller	1 Per Stage

Note 4: Bronze bearing may be used in place of the standard Neoprene Bearing.

TABLE 3

Item Number	Part Number	Description	Required Qty
2	M16033	5TMH-110 "A" Impeller 4.365"	See Table 4
2	M16034	5TMH-110 "C" Impeller 3.875"	

TABLE 4 - 60 Hz Staging Requirements Build Table

Series	HP/kW	Stages	"A" Trim	"C" Trim	416 SS shaft		Ion-nitride shaft		Shaft Length (in/mm)	Cable Guard Length ⁷	A ssembled pump length (motor not included)
					Pump catalog number	416 SS Shaft p/n ⁶	Pump catalog number	Ion Nitride Shaft p/n ⁶			
5TMH5-110	5/3.7	3	3		B86636	M16220	B86636N	M16234	25.5 in/648 mm	22 in/559 mm	31.7 in/806 mm
5TMH7.5-110	7.5/5.6	5	4	1	B86637	M16222	B86637N	M16236	38.5 in/978 mm	35 in/889 mm	44.7 in/1136 mm
5TMH10-110	10/7.5	6	6		B86638	M16223	B86638N	M16237	45 in/1143 mm	41.5 in/1055 mm	51.2 in/1301 mm
5TMH15-110	15/11.2	10	8	2	B86639	M16227	B86639N	M16241	71 in/1804 mm	67.5 in/1715 mm	77.2 in/1961 mm
5TMH20-110	20/14.9	13	11	2	B86640	M16229	B86640N	M16243	90.5 in/2299 mm	87 in/2210 mm	96.7 in/2457 mm
5TMH25-110	25/18.6	16	15	1	B86641	M16230	B86641N	M16244	110 in/2547 mm	106.5 in/2706 mm	116.2 in/2952 mm
5TMH30-110	30/22.4	18	18		B86642	M16383	B86642N	M16384	123 in/3125 mm	119.5 in/3036 mm	129.2 in/3282 mm

Note 5: Effective assembled pump diameter with cable guard lying flat against pump is 5.625 inches
 Note 6: 4" and 6" pumps use the same shaft and cable guards.
 Note 7: Cable Guard 308666000 sold in 12" (3.66m) lengths only.

