



FILE NO.:	6040.122
DATE:	May 31, 2013
SUPERSEDES:	6040.122
DATE:	December 21, 2011

PARTS LIST

SERIES 4030

BASE MOUNTED PUMP

CENTERLINE DISCHARGE
"L" DESIGNATION

1 5/8" IMPELLER BORE -- 2 1/8" MECHANICAL SEAL

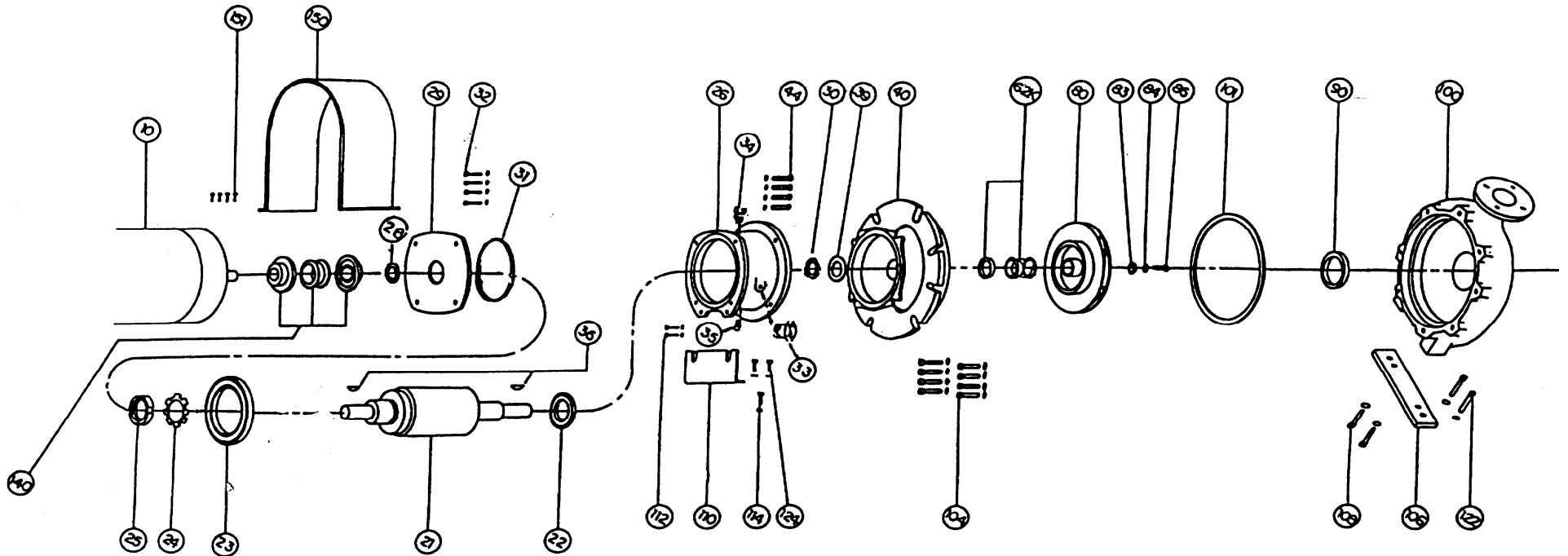
NEW DESIGN

NEMA FRAME ASSIGNMENTS

OPEN & TEFC (TEFC FRAMES IN GREY BOX WHERE DIFFERENT THAN OPEN)

FRAME PROGRAM HP	3600 RPM						1800 RPM			1200 RPM			900 RPM			
	"T" FRAMES	"U" FRAMES	ORIGINAL NEMA FRAMES		"T" FRAMES	"U" FRAMES	ORIGINAL NEMA FRAMES		"T" FRAMES	"U" FRAMES	ORIGINAL NEMA FRAMES		"T" FRAMES	"U" FRAMES	ORIGINAL NEMA FRAMES	
	1964	1952			1964	1952			1964	1952			1964	1952		
	-	-	-		143T	182	203		145T	184	204		182T	213	225	
1 1/2	143T	182	203		145T	184	204		182T	184	224		184T	213	254	
2	145T	184	204		145T	184	224		184T	213	225		213T	215	254	
3	145T	182T	184	224	182T	213	225	213T	215	254	215T	254U	284			
5	182T	184T	213	225	184	215	254	215T	254U	284	254T	256U	324			
7 1/2	184T	213T	215	254	213T	254U	284	254T	256U	324	256T	284U	326			
10	213T	215T	254U	284	215T	256U	324	256T	284	326	284T	286U	364			
15	215T	254T	256U	324	254T	284T	326	284T	234T	364	286T	326U	365			
20	254T	256T	284U	286U	326	256T	286U	364	286T	326U	365	324T	364U	404		
25	256T	284TS	286U	324U	364S	365S	284T	324U	364	365	324T	364U	404	326T	365U	405
30	284TS	286TS	324S	326S	364S	404S	286T	326U	365	404	326T	365U	405	364T	404U	444
40	286TS	324TS	326S	364US	365S	405S	324T	364U	404	405	364T	404U	444	365T	405U	445
50	324TS	326TS	364US	404S	444S	326T	365US	405S	444S	365T	405U	445	404T	444U	504U	
60	326TS	364TS	365US	405US	405S	445S	364TS	404US	405US	444S	445S	404T	444U	504U	405T	445U
75	364TS	365TS	404US	444US	444S	504S	365TS	405US	444US	445S	504S	405T	445U	505	444T	-
100	365TS	405TS	405US	445US	445S	505S	404TS	405TS	444US	445US	504S	505S	444T	-	-	445T
125	404TS	444TS	444US	504US	405TS	444TS	445US	505S	445T	-	-	-	-	-	-	-
150	405TS	445TS	445US	505S	444TS	445TS	-	-	-	-	-	-	-	-	-	-
200	444TS	-	-	-	445TS	-	-	-	-	-	-	-	-	-	-	-
250	445TS	-	-	-	-	-	-	-	-	-	-	-	-	-	-	-

**SERIES 4030 CENTERLINE DISCHARGE, BASE MOUNTED PUMP
 "L" SIZE 1 5/8" IMPELLER BORE -- 2 1/8" MECHANICAL SEAL
 EXPLODED VIEW -- OIL LUBRICATION**



INDEX

ITEM	DESCRIPTION	PAGE	ITEM	DESCRIPTION	PAGE	ITEM	DESCRIPTION	PAGE
**	BEARING FRAME ASSY. STD	8	32	BEARING COVER CAPSCREW	8 & 10	83	IMPELLER WASHER	9 & 11
**	BEARING FRAME ASSY. S/S	10	33	OIL VIEW GAUGE	8 & 10	86	IMPELLER CAPSCREW	9 & 11
21	SHAFT ASSEMBLY	8 & 10	34	VENT FITTING	8 & 10	100	CASING	4
22	BALL BEARING (INBOARD)	8 & 10	35	PIPE PLUG	8 & 10	101	CASING GASKET	7
23	BALL BEARING (OUTBOARD)	8 & 10	36	IMPELLER COUPLER KEY	8 & 10	104	CASING CAPSCREW	6
24	LOCKWASHER	8 & 10	39	WATER SLINGER	8 & 10	110	BEARING FRAME SUPPORT FOOT	9 & 11
25	LOCKNUT	8 & 10	40	ADAPTER	6	112	BRG. FRM. SUPPORT FOOT CAPSCREW (UPR)	9 & 11
26	BEARING FRAME	8 & 10	42	OUTBOARD BEARING COVER	8 & 10	114	BRG. FRM. SUPPORT FOOT ADJUSTING SCREW	9 & 11
28	OIL SEAL (OUTBOARD)	8 & 10	43	OUTBRD BRG COVER SCREWS & WASHERS	8 & 10	114	JAM NUT	9 & 11
29	BEARING COVER	8 & 10	44	BRG. HOUSING CAPSCREW	7	124	BRG. FRM. SUPPORT FOOT CAPSCREWS (LWR)	9 & 11
30	OIL SEAL (INBOARD)	8 & 10	62	MECHANICAL SEAL ASSEMBLY	9 & 11	140	COUPLER	12 & 13
31	"O" RING	8 & 10	80	IMPELLER	5			

4030 PUMP PARTS

CENTERLINE DISCHARGE

"L" SIZE 1 5/8" IMPELLER BORE ----- 1 5/8" SHAFT DIAMETER AT COUPLER

2 1/8" MECHANICAL SEAL

ITEM 100 CASING

PUMP SIZE	PRESSURE RATING	CONST.	PART NUMBER	BAR CODE
10 X 8 X 13	125 LB.	B.F. & A.I.	427342-011	
10 X 8 X 13	250 LB.	D.I.	427342-041	
10 X 8 X 13	250 LB.	A.B.	427342-031	
8 X 6 X 15	125 LB.	B.F. & A.I.	427229-011	
8 X 6 X 15	250 LB.	D.I.	427230-031	
8 X 6 X 15	125 LB.	A.B.	427230-041	
10 X 8 X 15	125 LB.	B.F. & A.I.	427232-011	
10 X 8 X 15	250 LB.	D.I.	427233-031	
10 X 8 X 15	125 LB.	A.B.	427233-041	

4030 PUMP PARTS

CENTERLINE DISCHARGE

"L" SIZE 1 5/8" IMPELLER BORE ----- 1 5/8" SHAFT DIAMETER AT COUPLER

2 1/8" MECHANICAL SEAL

ITEM 80 IMPELLER*

PUMP SIZE	CONST.	PART NUMBER	BAR CODE
10 X 8 X 13	B.F. - A.B.	427333-041	
10 X 8 X 13	A.I.	427333-011	
8 X 6 X 15	B.F. - A.B.	427214-041	
8 X 6 X 15	A.I.	427214-011	
10 X 8 X 15	B.F. - A.B.	427217-041	
10 X 8 X 15	A.I.	427217-031	

Notes: * Impeller Part Numbers are for unbalanced, full diameter impellers. Always specify the Pump Serial Number. If possible, measure diameter of the impeller being replaced.

** B. F. Denotes "Bronze Fitted" construction. Parts in contact with the pumped liquid are bronze or copper, except casing and adapter.

A. I. Denotes "All Iron" construction. Parts in contact with the pumped liquid are cast iron or steel, except shaft sleeve & mechanical seal.

4030 PUMP PARTS

CENTERLINE DISCHARGE

"L" SIZE 1 5/8" IMPELLER BORE ----- 1 5/8" SHAFT DIAMETER AT COUPLER

2 1/8" MECHANICAL SEAL

ITEM 104 CASING CAPS. & WASHER

PUMP SIZE	NO. REQ'D	SIZE	PART NUMBER	BAR CODE
10 X 8 X 13	16	CAPSCREW 5/8-11NC X 1 1/2" LG	911129-112	
	16	WASHER 5/8 - 11NC STL - FLAT	927121-100	
8 X 6 X 15 10 X 8 X 15	16	CAPSCREW 5/8-11NC X 1 3/4" LG	911129-116	
	16	WASHER 5/8 - 11NC STL - FLAT	927121-100	

ITEM 40 ADAPTER

PUMP SIZE	CONST.	PART NUMBER	BAR CODE
10 X 8 X 13	B.F. - A.I.	427350-011	
	D.I.	427350-031	
8 X 6 X 15 10 X 8 X 15	B.F. - A.I.	426776-011	
	D.I.	426776-031	

4030 PUMP PARTS

CENTERLINE DISCHARGE

"L" SIZE 1 5/8" IMPELLER BORE ----- 1 5/8" SHAFT DIAMETER AT COUPLER

2 1/8" MECHANICAL SEAL

ITEM 101 CASING GASKET			
PUMP SIZE	DIMENSIONS O.D X I.D. X THICKNESS	PART NUMBER	BAR CODE
10 X 8 X 13	14"X13 3/4"X1/16"	426401-005	
8 X 6 X 15	16 3/8"X15 5/8"X1/16"	426401-008	
10 X 8 X 15			

ITEM 44 BRG. HSG., CAPS. AND WASHER				
PUMP SIZE	NO. REQ'D	SIZE	PART NUMBER	BAR CODE
10 X 8 X 13	4	CAPSCREW	911125-110	
		1/2-13NC X 1 1/4" LG		
8 X 6 X 15				
10 X 8 X 15	4	WASHER	927117-100	
		1/2 - 13NC STL - FLAT		

4030 PUMP PARTS

CENTERLINE DISCHARGE

"L" SIZE 1 5/8" IMPELLER BORE ----- 1 5/8" SHAFT DIAMETER AT COUPLER

2 1/8" MECHANICAL SEAL

BEARING FRAME ASSEMBLY

STEEL SHAFT, OIL LUBRICATED

ITEM NUMBER	DESCRIPTION	PART NUMBER	BAR CODE
	BEARING FRAME ASSEMBLY(1)	426775-000	
26	BEARING HOUSING	426492-016	
21	SHAFT & SLEEVE ASSEMBLY	427241-001	
22	INBOARD BEARING	971101-922	
23	OUTBOARD BEARING	971101-923	
24	LOCKWASHER	426364-003	
25	LOCKNUT	426364-004	
29	OUTBOARD BEARING COVER	426502-513	
28	OUTBOARD OIL SEAL	965001-190	
31	OUTBD. BRG. COV."O" RING	961131-249	
42	INBOARD BEARING COVER	426507-515	
43	INBOARD BRG. COV. SCREW 3 REQ'D. #10-24 X 7/16"	916364-107	
43	INBD. BRG. COV. SCREW WASH. 3 REQ'D. #10 STEEL	926156-100	
30	INBOARD OIL SEAL	965002-010	
31	INBD. BRG. COV. "O" RING	961131-249	
32	BEARING CAPSCREWS 3/8 - 16NC X 1 1/4" LG (4 REQ'D)	911121-110	
33	OIL VIEW GAUGE	970224-001	
34	AIR VENT	407444-000	
35	PIPE PLUG 1/4" NPT (1 REQ'D)	937105-201	
36	IMPELLER KEY	428163-714	
36	COUPLER KEY	428163-718	
39	WATER SLINGER	419315-001	

NOTE (1) ITEMS 21 TO 39 INCLUSIVE ARE INCLUDED IN THE BEARING FRAME ASSEMBLY

SEE PAGE 9 FOR COMMON PARTS

4030 PUMP PARTS

CENTERLINE DISCHARGE

"L" SIZE 1 5/8" IMPELLER BORE ----- 1 5/8" SHAFT DIAMETER AT COUPLER

2 1/8" MECHANICAL SEAL

COMMON PARTS, STEEL SHAFT, OIL LUBRICATED			
ITEM NUMBER	DESCRIPTION	PART NUMBER BF & AI	BAR CODE
62	MECHANICAL SEAL ASSEMBLY	975000-985**	
83	IMPELLER WASHER	425742-100	
86	S/S IMPELLER CAPSCREW	911900-180	
110	SUPPORT FOOT	426361-001	
112	SUP. FOOT CAPSCREW UPPER 1/2"-13NC X 1" LG. (1 req'd)	911129-108	
112	SUP. FT. CAPS. WASHER UPPER 1/2" SAE (1 req'd)	927117-100	
114	SUPPORT FOOT JACKSCREW 1/2"-13NC X 1 3/4" LG. (1 req'd)	911129-114	
114	JACKSCREW NUT 1/2"-13NC JAM NUT (1req'd)	913125-100	
124	SUP. FOOT CAPSCREW LOWER 1/2"-13NC X 1 1/2" LG.	911125-112	
124	SUP. FT. CAPS WASHER LOWER 1/2"- FLAT	927118-100	

** For liquids above 200°F/93°C use 9975001-873 (-673 if potable drinking water above 200°F/93°C) For glycols above 30% by weight use 9975001-877 (-878 if above 200°F/93°C)

4030 PUMP PARTS

CENTERLINE DISCHARGE

"L" SIZE 1 5/8" IMPELLER BORE ---- 1 5/8" SHAFT DIAMETER AT COUPLER

2 1/8" MECHANICAL SEAL

BEARING FRAME ASSEMBLY

STAINLESS STEEL SHAFT, OIL LUBRICATED

ITEM NUMBER	DESCRIPTION	PART NUMBER	BAR CODE
	BEARING FRAME ASSEMBLY(1)	426775-071	
26	BEARING HOUSING	426492-016	
21	SHAFT & SLEEVE ASSEMBLY	427241-071	
22	INBOARD BEARING	971101-922	
23	OUTBOARD BEARING	971101-923	
24	LOCKWASHER	426364-003	
25	LOCKNUT	426364-004	
29	OUTBOARD BEARING COVER	426502-513	
28	OUTBOARD OIL SEAL	965001-190	
31	OUTBD. BRG. COV."O" RING	961131-249	
42	INBOARD BEARING COVER	426507-515	
43	INBOARD BRG. COV. SCREW 3 REQ'D. #10-24 X 7/16"	916364-107	
43	INBD. BRG. COV. SCREW WASH. 3 REQ'D. #10 STEEL	926156-100	
30	INBOARD OIL SEAL	965002-010	
31	INBD. BRG. COV. "O" RING	961131-249	
32	BEARING CAPSCREWS 3/8 - 16NC X 1 1/4" LG (4 REQ'D)	911121-110	
33	OIL VIEW GAUGE	970224-001	
34	AIR VENT	407444-000	
35	PIPE PLUG 1/4" NPT (1 REQ'D)	937105-201	
36	IMPELLER KEY	428163-714	
36	COUPLER KEY	428163-718	
39	WATER SLINGER	419315-001	

NOTE (1) ITEMS 21 TO 39 INCLUSIVE ARE INCLUDED IN THE BEARING FRAME ASSEMBLY

SEE PAGE 11 FOR COMMON PARTS

4030 PUMP PARTS

CENTERLINE DISCHARGE

"L" SIZE 1 5/8" IMPELLER BORE ----- 1 5/8" SHAFT DIAMETER AT COUPLER

2 1/8" MECHANICAL SEAL

COMMON PARTS, S/S SHAFT, OIL LUBRICATED			
ITEM NUMBER	DESCRIPTION	PART NUMBER BF & AI	BAR CODE
62	MECHANICAL SEAL ASSEMBLY	975000-985**	
83	IMPELLER WASHER	425742-100	
86	S/S IMPELLER CAPSCREW	911900-180	
110	SUPPORT FOOT	426361-001	
112	SUP. FOOT CAPSCREW UPPER 1/2"-13NC X 1" LG. (1 req'd)	911129-108	
112	SUP. FT. CAPS. WASHER UPPER 1/2" SAE (1 req'd)	927117-100	
114	SUPPORT FOOT JACKSCREW 1/2"-13NC X 1 3/4" LG. (1 req'd)	911129-114	
114	JACKSCREW NUT 1/2"-13NC JAM NUT (1req'd)	913125-100	
124	SUP. FOOT CAPSCREW LOWER 1/2"-13NC X 1 1/2" LG.	911125-112	
124	SUP. FT. CAPS WASHER LOWER 1/2"- FLAT	927118-100	

** For liquids above 200°F/93°C use 9975001-873 (-673 if potable drinking water above 200°F/93°C) For glycols above 30% by weight use 9975001-877 (-878 if above 200°F/93°C)

4030 PUMP PARTS

CENTERLINE DISCHARGE

"L" SIZE 1 5/8" IMPELLER BORE ----- 1 5/8" SHAFT DIAMETER AT COUPLER

2 1/8" MECHANICAL SEAL

COUPLER HALF SELECTION TABLE

(WOODS TYPE)

MOTOR FRAME SIZE	MOTOR	FLANGE PART NUMBER	WOODS SIZE	BAR CODE
	FLANGE			
	BORE			
	PUMP			
284TS-286TS	1 5/8"	975000-880	11S	
	X			
	1 5/8"	975000-880	11S	
284T-286T 324TS-326TS 364TS-365TS	1 7/8"	975000-881	11S	
	X			
	1 5/8"	975000-880	11S	
324T-326T 404TS-405TS	2 1/8"	975000-882	11S	
	X			
	1 5/8"	975000-880	11S	
364T-365T	2 3/8"	975000-883	11S	
	X			
	1 5/8"	975000-880	11S	
444TS-445TS 447TS	2 3/8"	975000-885	10S	
	X			
	1 5/8"	975000-884	10S	
404T-405T	2 7/8"	975000-886	10S	
	X			
	1 5/8"	975000-884	10S	
444T-445T 447T-448T	3 3/8"	975000-887	10S	
	X			
	1 5/8"	975000-884	10S	

COUPLER INSERTS ON PAGE 13

4030 PUMP PARTS

CENTERLINE DISCHARGE

"L" SIZE 1 5/8" IMPELLER BORE ----- 1 5/8" SHAFT DIAMETER AT COUPLER

2 1/8" MECHANICAL SEAL

COUPLER INSERT SELECTION TABLE

(WOODS TYPE)

COUPLER INSERT SIZE	MOTOR FRAME SIZE	INSERT NUMBER	PART NUMBER	BAR CODE
11S	284T-286T	11E	975000-809	
	324T-326T			
	324TS-326TS			
	364T-365T			
	364TS-365TS			
	404TS-405TS			
10S	404T-405T	10H	975000-808	
	444T-445T			
	444TS-445TS			
	447T-449T			
	447TS			



FILE NO.:	6040.121
DATE:	May 31, 2013
SUPERSEDES:	6040.121
DATE:	December 21, 2011

PARTS LIST

SERIES 4030

BASE MOUNTED PUMP

CENTERLINE DISCHARGE
"M" DESIGNATION

1-1/4" IMPELLER BORE -- 1-5/8" MECHANICAL SEAL

NEW DESIGN

NEMA FRAME ASSIGNMENTS

OPEN & TEFC (TEFC FRAMES IN GREY BOX WHERE DIFFERENT THAN OPEN)

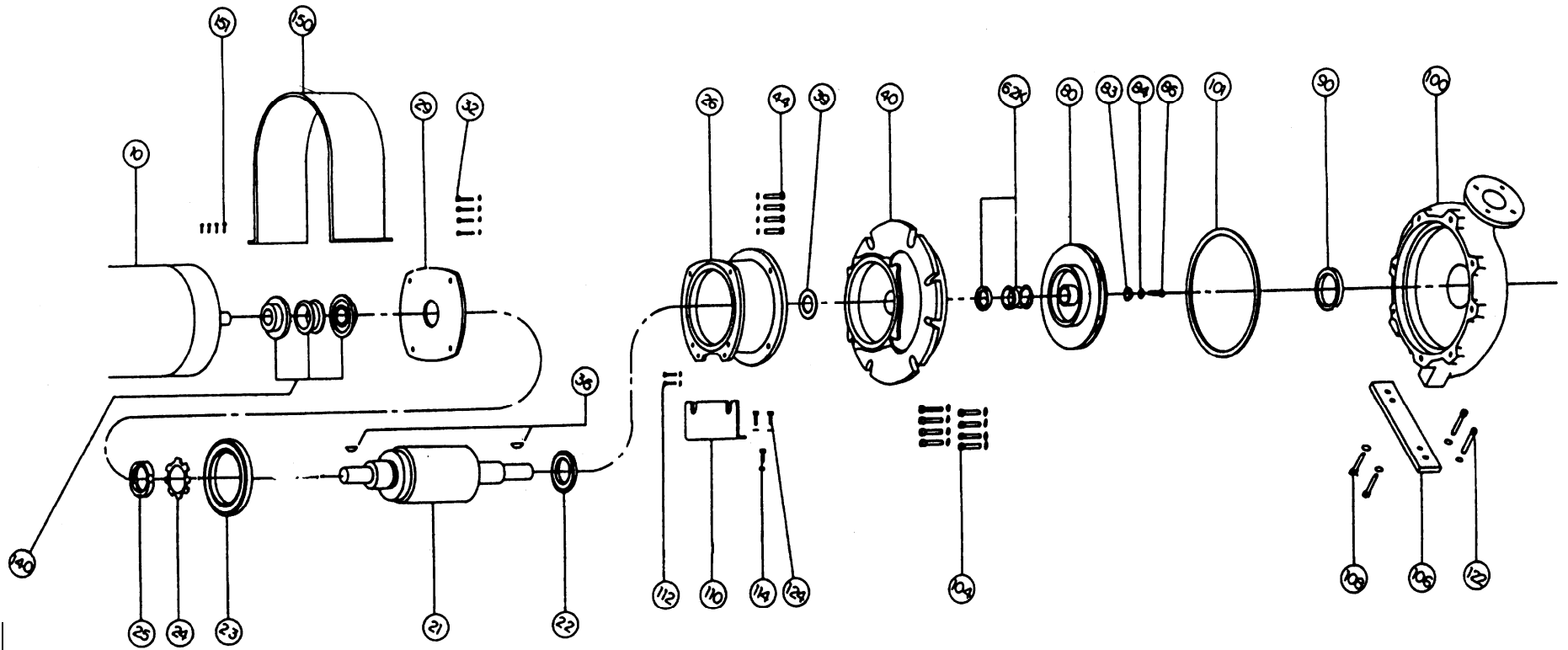
FRAME PROGRAM HP	3600 RPM						1800 RPM						1200 RPM			900 RPM			
	"T" FRAMES		"U" FRAMES		ORIGINAL NEMA FRAMES		"T" FRAMES		"U" FRAMES		ORIGINAL NEMA FRAMES		"T" FRAMES	"U" FRAMES	ORIGINAL NEMA FRAMES	"T" FRAMES	"U" FRAMES	ORIGINAL NEMA FRAMES	
	1964	1952	1964	1952	1964	1952	1964	1952	1964	1952	1964	1952	1964	1952	1964	1952	1964	1952	1964
	-	-	-	-	143T	182	203	145T	184	204	145T	184	204	182T	213	225			
1 1/2	143T	182	203		145T	184	204	182T	184	224	184T	213	254	184T	213	254			
2	145T	184	204		145T	184	224	184T	213	225	213T	215	254	213T	215	254			
3	145T	182T	184	224	182T	213	225	213T	215	254	215T	254U	284	215T	254U	284			
5	182T	184T	213	225	184	215	254	215T	254U	284	215T	254U	284	254T	256U	324			
7 1/2	184T	213T	215	254	213T	254U	284	254T	256U	324	254T	256U	324	256T	284U	326			
10	213T	215T	254U	284	215T	256U	324	256T	284	326	256T	284	326	284T	286U	364			
15	215T	254T	256U	324	254T	284T	326	284T	234T	364	284T	234T	364	286T	326U	365			
20	254T	256T	284U	286U	326	256T	286U	364	365	324T	364U	404	326T	365U	405				
25	256T	284TS	286U	324U	364S	365S	284T	324U	364	365	324T	364U	404	326T	365U	405			
30	284TS	286TS	324S	326S	364S	404S	286T	326U	365	404	326T	365U	405	364T	404U	444			
40	286TS	324TS	326S	364US	365S	405S	324T	364U	404	405	364T	404U	444	365T	405U	445			
50	324TS	326TS	364US	404S	444S	326T	365US	405S	444S	365T	405U	445	404T	444U	504U	405T	445U	505	
60	326TS	364TS	365US	405US	405S	445S	364TS	404US	405US	444S	445S	404T	444U	504U	405T	445U	505		
75	364TS	365TS	404US	444US	444S	504S	365TS	405US	444US	445S	504S	405T	445U	505	444T	-	-		
100	365TS	405TS	405US	445US	445S	505S	404TS	405TS	444US	445US	504S	505S	444T	-	-	445T	-	-	
125	404TS	444TS	444US	504US	405TS	444TS	445US	505S	445T	-	-	-	-	-	-	-	-	-	
150	405TS	445TS	445US	505S	444TS	445TS	-	-	-	-	-	-	-	-	-	-	-	-	
200	444TS	-	-	-	445TS	-	-	-	-	-	-	-	-	-	-	-	-	-	
250	445TS	-	-	-	-	-	-	-	-	-	-	-	-	-	-	-	-	-	

4030 BEARING FRAME UTILIZATION CHART (60 Hz)

MOTOR HP	1150 RPM	-	0.8	-	1.5	-	3	-	7.5	-	-	-	15	-	-	-	25	-	-	-	40	-	-	-	60	-	-	-	100	-	-	-	-	-	
	1750 RPM	0.5	-	1.5	-	2	-	5	-	10	-	-	-	20	-	-	-	30	-	-	-	50	-	-	-	75	-	-	-	125	-	-	-	-	-
3500 RPM	-	1	2	-	5	-	10	-	20	-	30	-	-	-	50	-	-	-	75	-	-	-	125	-	-	-	200	-	-	-	-	-	-	-	-
PUMP SIZE	MOTOR FRAME SIZE	5	4	3	2	1	1	2	2	2	2	2	2	2	2	3	3	3	3	3	3	3	3	3	4	4	4	4	4	4	4	4	4	4	4
1.5x1x6	S	S	S	S	S	S	S	S	-	-	-	-	-	-	-	-	-	-	-	-	-	-	-	-	-	-	-	-	-	-	-	-	-	-	
3x1.5x6	S	S	S	S	S	S	S	S	-	-	-	-	-	-	-	-	-	-	-	-	-	-	-	-	-	-	-	-	-	-	-	-	-	-	
3x2x6	S	S	S	S	S	S	S	S	-	-	-	-	-	-	-	-	-	-	-	-	-	-	-	-	-	-	-	-	-	-	-	-	-	-	
3x2.5x6	S	S	S	S	S	S	S	S	-	-	-	-	-	-	-	-	-	-	-	-	-	-	-	-	-	-	-	-	-	-	-	-	-	-	
4x3x6	S	S	S	S	S	S	S	S	M	M	M	M	-	-	-	-	-	-	-	-	-	-	-	-	-	-	-	-	-	-	-	-	-	-	
1.5x1x8	S	S	S	S	S	S	S	S	S	S	S	S	-	-	-	-	-	-	-	-	-	-	-	-	-	-	-	-	-	-	-	-	-	-	
3x1.5x8	S	S	S	S	S	S	S	S	S	S	M	M	-	-	-	-	-	-	-	-	-	-	-	-	-	-	-	-	-	-	-	-	-	-	
3x2x8	S	S	S	S	S	S	S	S	S	M	M	M	-	-	-	-	-	-	-	-	-	-	-	-	-	-	-	-	-	-	-	-	-	-	
3x2.5x8	S	S	S	S	S	S	S	S	M	M	M	M	-	-	M	M	-	-	-	-	-	-	-	-	-	-	-	-	-	-	-	-	-	-	
4x3x8	S	S	S	S	S	S	S	S	M	M	M	M	-	-	M	M	-	-	-	-	-	-	-	-	-	-	-	-	-	-	-	-	-	-	
5x4x8	-	S	S	S	S	S	S	S	M	M	MHD	MHD	-	-	MHD	MHD	-	-	MHD	MHD	-	-	-	-	-	-	-	-	-	-	-	-	-	-	
6x4x8	-	S	S	S	S	S	S	S	M	M	MHD	MHD	-	-	MHD	MHD	-	-	MHD	MHD	-	-	-	-	-	-	-	-	-	-	-	-	-	-	
8x8x8	-	-	-	S	S	M	M	M	M	-	-	-	-	-	-	-	-	-	-	-	-	-	-	-	-	-	-	-	-	-	-	-	-	-	-
2x1x10	S	S	S	S	S	S	S	S	M	M	M	M	-	-	M	M	-	-	-	-	-	-	-	-	-	-	-	-	-	-	-	-	-	-	
2x1.5x10	S	S	S	S	S	S	S	S	M	M	M	M	-	-	M	M	-	-	-	-	-	-	-	-	-	-	-	-	-	-	-	-	-	-	
3x1.5x10	-	S	S	S	S	S	S	S	M	M	M	M	-	-	M	M	-	-	-	-	-	-	-	-	-	-	-	-	-	-	-	-	-	-	
3x2x10	-	S	S	S	S	S	S	S	M	M	M	M	-	-	M	M	-	-	M	M	-	-	-	-	-	-	-	-	-	-	-	-	-	-	
3x2.5x10	-	S	S	S	S	S	S	S	M	M	M	M	-	-	M	M	-	-	M	M	-	-	-	-	-	-	-	-	-	-	-	-	-	-	
4x3x10	-	-	-	S	S	S	S	S	S	M	M	M	-	-	MHD	MHD	-	-	MHD	MHD	-	-	MHD	MHD	-	-	MHD	MHD	-	-	-	-	-	-	
5x4x10	-	-	-	S	S	S	S	S	M	-	-	MHD	MHD	MHD	MHD	-	-	MHD	MHD	-	-	MHD	MHD	-	-	MHD	MHD	-	-	-	-	-	-	-	
6x4x10	-	-	-	S	S	S	S	S	M	-	-	MHD	MHD	MHD	MHD	-	-	MHD	MHD	-	-	MHD	MHD	-	-	MHD	MHD	-	-	-	-	-	-	-	
6x5x10	-	-	-	S	S	S	S	S	M	-	-	M	M	-	-	M	M	-	-	-	-	-	-	-	-	-	-	-	-	-	-	-	-	-	
8x6x10	-	-	-	-	-	M	M	M	M	-	-	M	M	-	-	M	M	-	-	M	M	-	-	-	-	-	-	-	-	-	-	-	-	-	
4x3x11.5	-	-	-	S	S	S	S	S	S	-	-	M	M	-	-	-	-	-	-	-	-	-	-	-	-	-	-	-	-	-	-	-	-	-	
5x4x11.5	-	-	-	-	-	S	S	S	S	-	-	M	M	-	-	-	-	-	-	-	-	-	-	-	-	-	-	-	-	-	-	-	-	-	
6x5x11.5	-	-	-	-	-	S	S	M	M	-	-	M	M	-	-	M	M	-	-	-	-	-	-	-	-	-	-	-	-	-	-	-	-	-	
8x6x11.5	-	-	-	-	-	M	M	M	M	-	-	M	M	-	-	M	M	-	-	M	M	-	-	-	-	-	-	-	-	-	-	-	-	-	
3x1.5x13	-	-	-	-	-	M	M	M	M	M	M	-	-	MHD	MHD	-	-	MHD	MHD	-	-	MHD	MHD	-	-	MHD	MHD	-	-	-	-	-	-	-	
3x2x13	-	-	-	-	-	M	M	M	M	-	-	M	M	MHD	MHD	-	-	MHD	MHD	-	-	MHD	MHD	-	-	MHD	MHD	-	-	-	-	-	-	-	
4x3x13	-	-	-	-	-	M	M	M	M	-	-	M	M	-	-	M	M	-	-	-	-	-	-	-	-	-	-	-	-	-	-	-	-	-	
4x3x13L	-	-	-	-	-	M	M	M	M	-	-	M	M	-	-	M	M	-	-	-	-	-	-	-	-	-	-	-	-	-	-	-	-	-	
6x4x13	-	-	-	-	-	-	-	M	M	-	-	M	M	-	-	M	M	-	-	M	M	-	-	-	-	-	-	-	-	-	-	-	-	-	
6x4x13H	-	-	-	-	-	-	-	M	M	-	-	M	M	-	-	M	M	-	-	M	M	-	-	-	-	-	-	-	-	-	-	-	-	-	
6x5x13	-	-	-	-	-	-	-	M	M	-	-	M	M	-	-	M	M	-	-	M	M	-	-	-	-	-	-	-	-	-	-	-	-	-	
6x5x13H	-	-	-	-	-	-	-	M	M	-	-	M	M	-	-	M	M	-	-	M	M	-	-	-	-	-	-	-	-	-	-	-	-	-	
8x6x13	-	-	-	-	-	M	M	M	M	-	-	M	M	-	-	M	M	-	-	M	M	-	-	-	-	-	-	-	-	-	-	-	-	-	
10x8x13	-	-	-	-	-	-	-	-	-	-	-	L	L	-	-	L	L	-	-	L	L	-	-	L	L	-	-	L	L	-	-	-	-	-	
8x6x15	-	-	-	-	-	-	-	-	-	-	-	L	L	-	-	L	L	-	-	L	L	-	-	L	L	-	-	L	L	-	-	-	-	-	
10x8x15	-	-	-	-	-	-	-	-	-	-	-	L	L	-	-	L	L	-	-	L	L	-	-	L	L	-	-	L	L	-	-	-	-	-	
LEGEND	DESCRIPTION												IMPELLER BORE				MECHANICAL SEAL SIZE				LUBRICATION				LUBE OPTIONS										
S	Small Bearing Frame												7/8" (0.875")				1-1/4" (1.25")				Permanently Greased				Regrease, Oil										
M	Medium Bearing Frame												1-1/4" (1.25")				1-5/8" (1.625")				Permanently Greased				Regrease, Oil										
MHD*	Medium Heavy-Duty Bearing Frame												1-1/4" (1.25")				1-5/8" (1.625")				Re-Greasable				Oil										
L	Large Bearing Frame												1-5/8" (1.625")				2-1/8" (2.125")				Oil				-										

* Note: When replacing Old "M" Oil Lubricated Bearing Frames update with New Design MHD Bearing Frame with Double Row Bearings

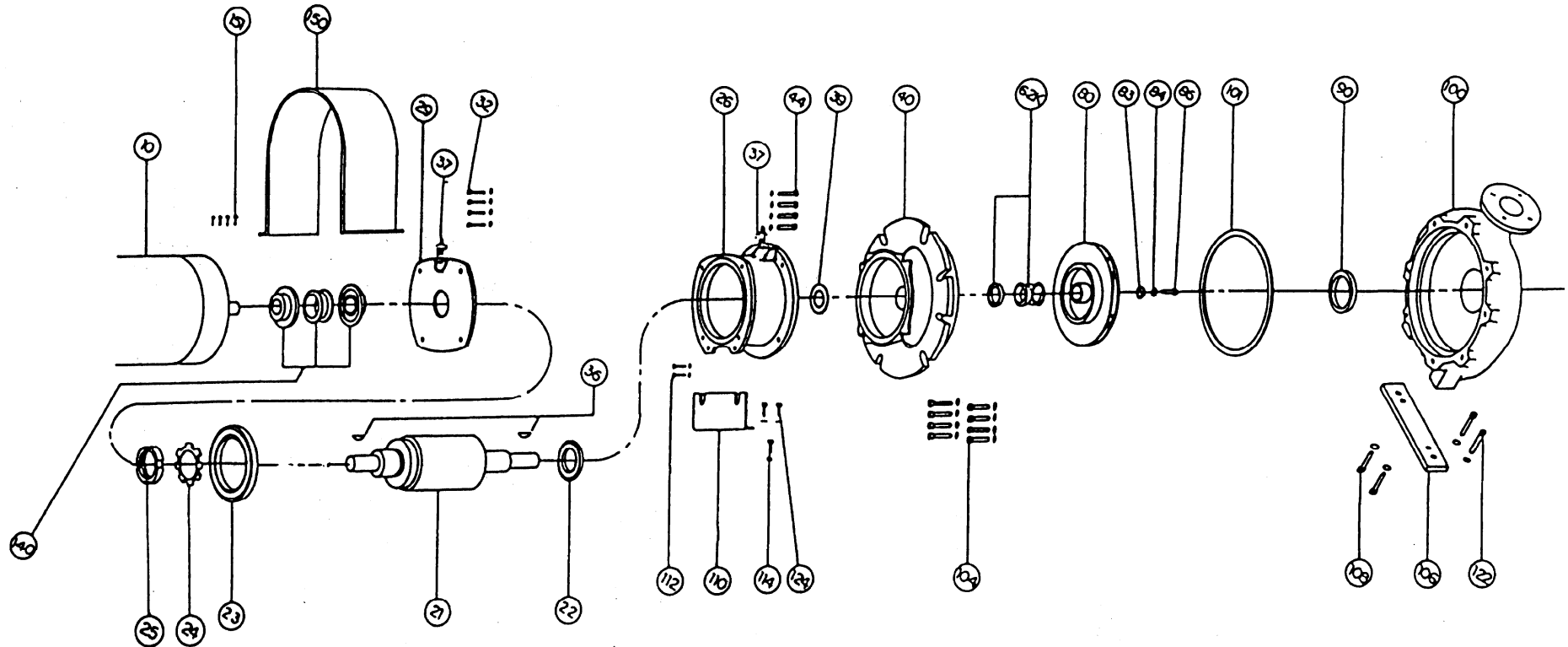
**SERIES 4030 CENTERLINE DISCHARGE, BASE MOUNTED PUMP
 "M" SIZE 1 1/4" IMPELLER BORE -- 1 5/8" MECHANICAL SEAL
 EXPLODED VIEW -- PERMANENT GREASE LUBRICATION**



INDEX

ITEM	DESCRIPTION	PAGE	ITEM	DESCRIPTION	PAGE	ITEM	DESCRIPTION	PAGE
21	SHAFT ASSEMBLY	23 & 24	**	BRG. FRAME ASSY.	23 & 24	106	CASING SUPPORT FOOT	30
22	BALL BEARING (INBOARD)	23 & 24	40	ADAPTER	15 TO 20	108	CASING SUPPORT FOOT CAPSCREWS (UPR)	31
23	BALL BEARING (OUTBOARD)	23 & 24	44	ADAPTER CAPSCREW	22	110	BEARING FRAME SUPPORT FOOT	29
24	SPIDER WASHER	23 & 24	62K	MECHANICAL SEAL ASSEMBLY	23 & 24	112	BRG. FRM. SUPPORT FOOT CAPSCREWS (UPR)	34
25	LOCKNUT	23 & 24	80	IMPELLER	10,11 & 12	113	JAM NUT	23 & 24
26	BEARING FRAME	23 & 24	83	IMPELLER WASHER	23 & 24	114	BRG. FRM. SUPPORT FOOT ADJUSTING SCREW	23 & 24
29	BEARING COVER (INBOARD)	23 & 24	86	IMPELLER CAPSCREW	23 & 24	122	CASING SUPPORT FOOT CAPSCREWS (LWR)	32
32	BEARING COVER CAPSCREW	23 & 24	100	CASING	6, 7, 8 & 9	124	BRG. FRM. SUPPORT FOOT CAPSCREWS (LWR)	33
36	IMPELLER/COUPLER KEY	23 & 24	101	CASING GASKET	22	140	COUPLER	35 & 36
39	WATER SLINGER	23 & 24	104	CASING CAPSCREW	13 & 14			

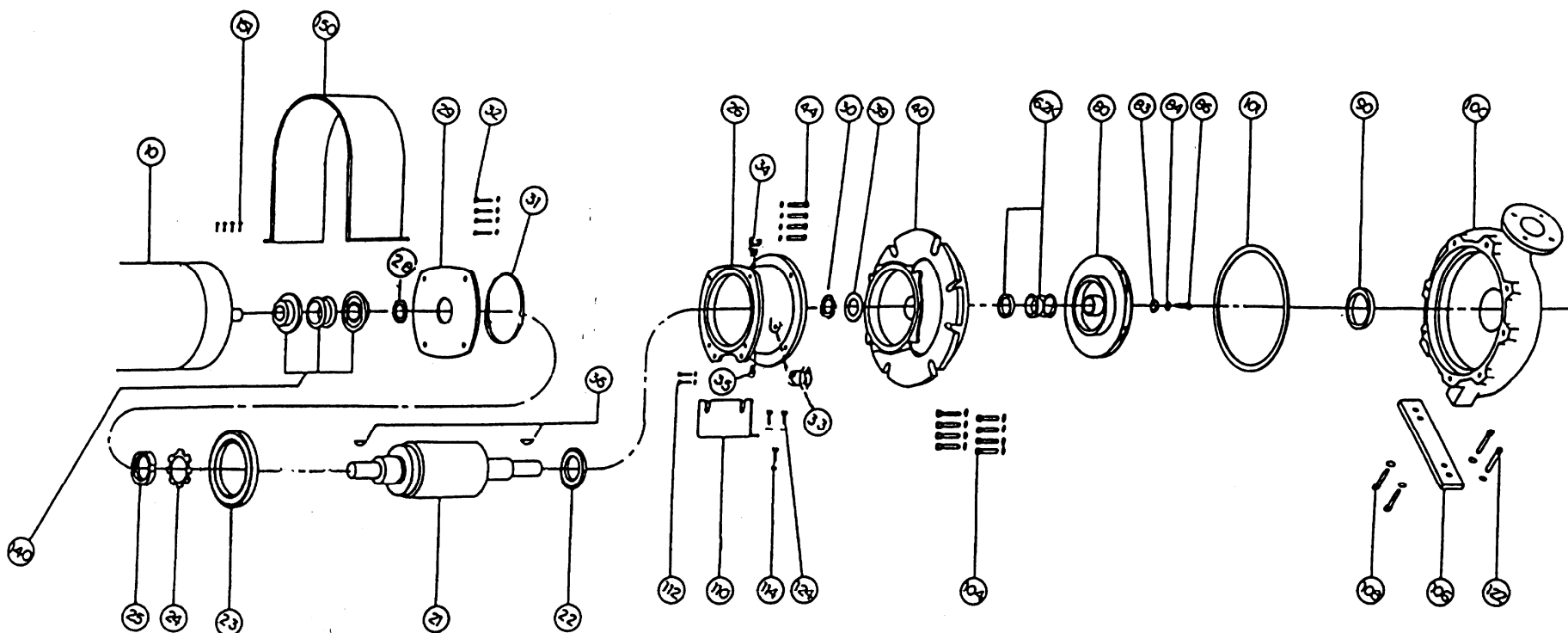
**SERIES 4030 CENTERLINE DISCHARGE, BASE MOUNTED PUMP
 "M" SIZE 1 1/4" IMPELLER BORE -- 1 5/8" MECHANICAL SEAL
 EXPLODED VIEW -- REGREASEABLE BEARINGS**



INDEX

ITEM	DESCRIPTION	PAGE	ITEM	DESCRIPTION	PAGE	ITEM	DESCRIPTION	PAGE
**	BRG. FRAME ASSY.	25 & 26	37	GREASE FITTING	25 & 26	104	CASING CAPSCREW	13 & 14
21	SHAFT ASSEMBLY	25 & 26	39	WATER SLINGER	25 & 26	106	CASING SUPPORT FOOT	30
22	BALL BEARING (INBOARD)	25 & 26	40	ADAPTER	15 TO 20	108	CASING SUPPORT FOOT CAPSCREWS (UPR)	31
23	BALL BEARING (OUTBOARD)	25 & 26	44	ADAPTER CAPSCREW	22	110	BEARING FRAME SUPPORT FOOT	29
24	SPIDER WASHER	25 & 26	62	MECHANICAL SEAL ASSEMBLY	25 & 26	112	BRG. FRM. SUPPORT FOOT CAPSCREWS (UPR)	34
25	LOCKNUT	25 & 26	80	IMPELLER	10,11 & 12	113	JAM NUT	25 & 26
26	BEARING FRAME	25 & 26	83	IMPELLER WASHER	25 & 26	114	BRG. FRM. SUPPORT FOOT ADJUSTING SCREW	25 & 26
29	BEARING COVER	25 & 26	86	IMPELLER CAPSCREW	25 & 26	122	CASING SUPPORT FOOT CAPSCREWS (LWR)	32
32	BEARING COVER CAPSCREW	25 & 26	100	CASING	6, 7, 8 & 9	124	BRG. FRM. SUPPORT FOOT CAPSCREWS (LWR)	33
36	IMPELLER/COUPLER KEY	25 & 26	101	CASING GASKET	22	140	COUPLER	35 & 36

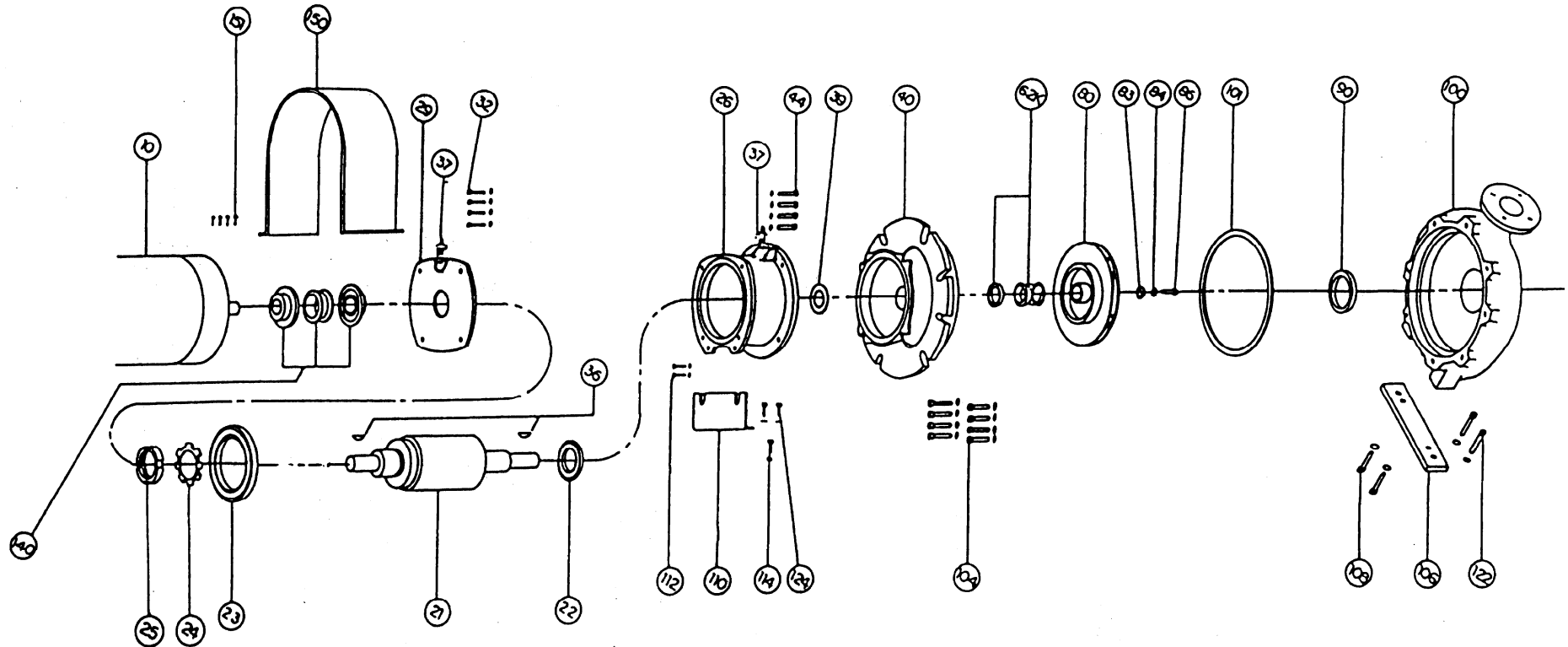
**SERIES 4030 CENTERLINE DISCHARGE, BASE MOUNTED PUMP
 "M" SIZE 1 1/4" IMPELLER BORE -- 1 5/8" MECHANICAL SEAL
 EXPLODED VIEW -- OIL LUBRICATION**



INDEX

ITEM	DESCRIPTION	PAGE	ITEM	DESCRIPTION	PAGE	ITEM	DESCRIPTION	PAGE
**	BRG. FRAME ASSY.	27 & 28	33	OIL VIEW GAUGE	27 & 28	101	CASING GASKET	22
21	SHAFT ASSEMBLY	27 & 28	34	VENT FITTING	27 & 28	104	CASING CAPSCREW	13 & 14
22	BALL BEARING (INBOARD)	27 & 28	35	PIPE PLUG	27 & 28	106	CASING SUPPORT FOOT	30
23	BALL BEARING (OUTBOARD)	27 & 28	36	IMPELLER/COUPLER KEY		108	CASING SUPPORT FOOT CAPSCREWS (UPR)	31
24	SPIDER WASHER	27 & 28	39	WATER SLINGER	27 & 28	110	BEARING FRAME SUPPORT FOOT	29
25	LOCKNUT	27 & 28	40	ADAPTER	15 TO 20	112	BRG. FRM. SUPPORT FOOT CAPSCREWS (UPR)	34
26	BEARING FRAME	27 & 28	44	ADAPTER CAPSCREW	22	113	JAM NUT	27 & 28
28	OIL SEAL (OUTBOARD)	27 & 28	62	MECHANICAL SEAL ASSEMBLY	27 & 28	114	BRG. FRM. SUPPORT FOOT ADJUSTING SCREW	27 & 28
29	BEARING COVER	27 & 28	80	IMPELLER	15 TO 20	122	CASING SUPPORT FOOT CAPSCREWS (LWR)	32
30	OIL SEAL (INBOARD)	27 & 28	83	IMPELLER WASHER	27 & 28	124	BRG. FRM. SUPPORT FOOT CAPSCREWS (LWR)	33
31	"O" RING	27 & 28	86	IMPELLER CAPSCREW	27 & 28	140	COUPLER	35 & 36
32	BEARING COVER CAPSCREW	27 & 28	100	CASING	6, 7, 8 & 9			

**SERIES 4030 CENTERLINE DISCHARGE, BASE MOUNTED PUMP
 "MHD" SIZE 1 1/4" IMPELLER BORE -- 1 5/8" MECHANICAL SEAL
 EXPLODED VIEW -- REGREASEABLE BEARINGS**

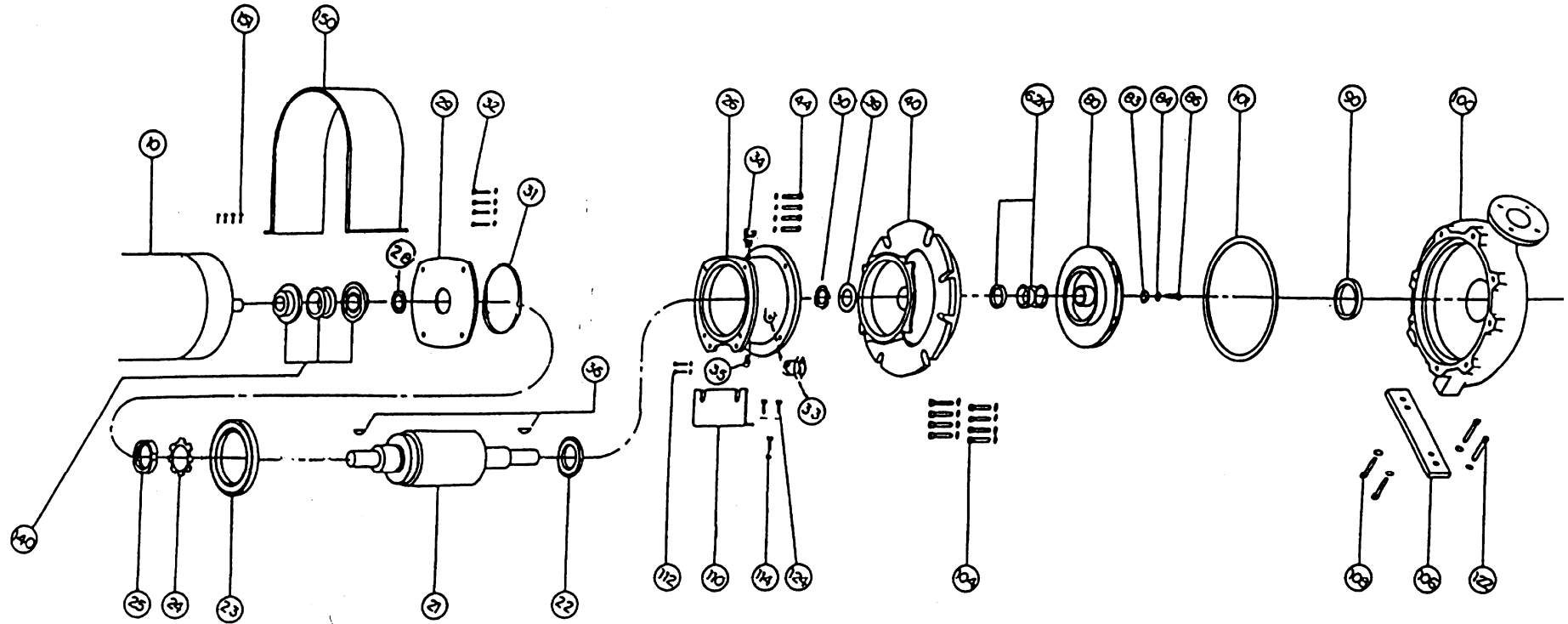


INDEX

ITEM	DESCRIPTION	PAGE	ITEM	DESCRIPTION	PAGE	ITEM	DESCRIPTION	PAGE
**	BRG. FRAME ASSY.	25 & 26	37	GREASE FITTING	25 & 26	104	CASING CAPSCREW	13 & 14
21	SHAFT ASSEMBLY	25 & 26	39	WATER SLINGER	25 & 26	106	CASING SUPPORT FOOT	30
22*	BEARING (INBOARD)	25 & 26	40	ADAPTER	15 TO 20	108	CASING SUPPORT FOOT CAPSCREWS (UPR)	31
23*	BEARING (OUTBOARD)	25 & 26	44	ADAPTER CAPSCREW	22	110	BEARING FRAME SUPPORT FOOT	29
24	SPIDER WASHER	25 & 26	62	MECHANICAL SEAL ASSEMBLY	25 & 26	112	BRG. FRM. SUPPORT FOOT CAPSCREWS (UPR)	34
25	LOCKNUT	25 & 26	80	IMPELLER	10,11 & 12	113	JAM NUT	25 & 26
26	BEARING FRAME	25 & 26	83	IMPELLER WASHER	25 & 26	114	BRG. FRM. SUPPORT FOOT ADJUSTING SCREW	25 & 26
29	BEARING COVER	25 & 26	86	IMPELLER CAPSCREW	25 & 26	122	CASING SUPPORT FOOT CAPSCREWS (LWR)	32
32	BEARING COVER CAPSCREW	25 & 26	100	CASING	6, 7, 8 & 9	124	BRG. FRM. SUPPORT FOOT CAPSCREWS (LWR)	33
36	IMPELLER/COUPLER KEY	25 & 26	101	CASING GASKET	22	140	COUPLER	35 & 36

* NOTE! Bearings are Special---Double Row Angular Contact

**SERIES 4030 CENTERLINE DISCHARGE, BASE MOUNTED PUMP
"MHD" SIZE 1 1/4" IMPELLER BORE -- 1 5/8" MECHANICAL SEAL
EXPLODED VIEW -- OIL LUBRICATION**



INDEX

ITEM	DESCRIPTION	PAGE	ITEM	DESCRIPTION	PAGE	ITEM	DESCRIPTION	PAGE
**	BRG. FRAME ASSY.	27 & 28	33	OIL VIEW GAUGE	27 & 28	101	CASING GASKET	22
21	SHAFT ASSEMBLY	27 & 28	34	VENT FITTING	27 & 28	104	CASING CAPSCREW	13 & 14
22*	BEARING (INBOARD)	27 & 28	35	PIPE PLUG	27 & 28	106	CASING SUPPORT FOOT	30
23*	BEARING (OUTBOARD)	27 & 28	36	IMPELLER/COUPLER KEY		108	CASING SUPPORT FOOT CAPSCREWS (UPR)	31
24	SPIDER WASHER	27 & 28	39	WATER SLINGER	27 & 28	110	BEARING FRAME SUPPORT FOOT	29
25	LOCKNUT	27 & 28	40	ADAPTER	15 TO 20	112	BRG. FRM. SUPPORT FOOT CAPSCREWS (UPR)	34
26	BEARING FRAME	27 & 28	44	ADAPTER CAPSCREW	22	113	JAM NUT	27 & 28
28	OIL SEAL (OUTBOARD)	27 & 28	62	MECHANICAL SEAL ASSEMBLY	27 & 28	114	BRG. FRM. SUPPORT FOOT ADJUSTING SCREW	27 & 28
29	BEARING COVER	27 & 28	80	IMPELLER	15 TO 20	122	CASING SUPPORT FOOT CAPSCREWS (LWR)	32
30	OIL SEAL (INBOARD)	27 & 28	83	IMPELLER WASHER	27 & 28	124	BRG. FRM. SUPPORT FOOT CAPSCREWS (LWR)	33
31	"O" RING	27 & 28	86	IMPELLER CAPSCREW	27 & 28	140	COUPLER	35 & 36
32	BEARING COVER CAPSCREW	27 & 28	100	CASING	6, 7, 8 & 9			

* NOTE! Bearings are Special---Double Row Angular Contact

4030 PUMP PARTS

CENTERLINE DISCHARGE

"M" SIZE 1 1/4" IMPELLER BORE ----- 1 1/8" SHAFT DIAMETER AT COUPLER

1 5/8" MECHANICAL SEAL

ITEM 100 CASING

PUMP SIZE	PRESSURE RATING	CONST.	PART NUMBER	BAR CODE
4 X 3 X 6	125 LB.	B. F. & A.I.	427292-011	
4 X 3 X 6	250 LB.	D. I.	427293-031	
4 X 3 X 6	125 LB.	A. B.	427292-041	
3 X 1 1/2 X 8	125 LB.	B. F. & A.I.	426599-011	
3 X 1 1/2 X 8	250 LB.	D.I.	426600-031	
3 X 1 1/2 X 8	125 LB.	A. B.	426599-041	
3 X 2 X 8	125 LB.	B. F. & A.I.	426125-011	
3 X 2 X 8	250 LB.	D.I.	426126-031	
3 X 2 X 8	125 LB.	A. B.	426125-041	
3 X 2 1/2 X 8	125 LB.	B. F. & A.I.	427236-011	
3 X 2 1/2 X 8	250 LB.	D.I.	427237-031	
3 X 2 1/2 X 8	125 LB.	A. B.	427236-041	
4 X 3 X 8	125 LB.	B. F. & A.I.	426129-011	
4 X 3 X 8	250 LB.	D.I.	426130-031	
4 X 3 X 8	125 LB.	A. B.	426129-041	
5 X 4 X 8	125 LB.	B. F. & A.I.	426107-011	
5 X 4 X 8	250 LB.	D.I.	426108-031	
5 X 4 X 8	125 LB.	A. B.	426107-041	
6 X 4 X 8	125 LB.	B. F. & A.I.	426624-011	
6 X 4 X 8	250 LB.	D.I.	426625-031	
6 X 4 X 8	125 LB.	A. B.	426624-041	

CASINGS CONTINUED ON PAGE 9

4030 PUMP PARTS

CENTERLINE DISCHARGE

"M" SIZE 1 1/4" IMPELLER BORE ----- 1 1/8" SHAFT DIAMETER AT COUPLER

1 5/8" MECHANICAL SEAL

ITEM 100 CASING				
PUMP SIZE	PRESSURE RATING	CONST.	PART NUMBER	BAR CODE
8 X 8 X 8	125 LB.	B. F. & A.I.	427913-011	
8 X 8 X 8	250 LB.	D. I.	427913-031	
8 X 8 X 8	125 LB.	A. B.	427913-041	
2 X 1 X 10	125 LB.	B. F. & A.I.	426137-011	
2 X 1 X 10	250 LB.	D.I.	426138-031	
2 X 1 X 10	125 LB.	A. B.	426137-041	
2 X 1.5 X 10	125 LB.	B. F. & A.I.	426259-011	
2 X 1.5 X 10	250 LB.	D.I.	426260-031	
2 X 1.5 X 10	125 LB.	A. B.	426259-041	
3 X 1 1/2 X 10	125 LB.	B. F. & A.I.	426139-011	
3 X 1 1/2 X 10	250 LB.	D.I.	426140-031	
3 X 1 1/2 X 10	125 LB.	A. B.	426139-041	
3 X 2 X 10	125 LB.	B. F. & A.I.	426143-011	
3 X 2 X 10	250 LB.	D.I.	426144-031	
3 X 2 X 10	125 LB.	A. B.	426143-041	
3 X 2 1/2 X 10	125 LB.	B. F. & A.I.	427290-011	
3 X 2 1/2 X 10	250 LB.	D.I.	427291-031	
3 X 2 1/2 X 10	125 LB.	A. B.	427290-041	
4 X 3 X 10	125 LB.	B. F. & A.I.	426149-011	
4 X 3 X 10	250 LB.	D.I.	426150-031	
4 X 3 X 10	125 LB.	A. B.	426149-041	

CASINGS CONTINUED ON PAGE 10

4030 PUMP PARTS

CENTERLINE DISCHARGE

"M" SIZE 1 1/4" IMPELLER BORE ----- 1 1/8" SHAFT DIAMETER AT COUPLER

1 5/8" MECHANICAL SEAL

ITEM 100 CASING

PUMP SIZE	PRESSURE RATING	CONST.	PART NUMBER	BAR CODE
5 X 4 X 10	125 LB.	B. F. & A.I.	426111-011	
5 X 4 X 10	250 LB.	D.I.	426112-031	
5 X 4 X 10	125 LB.	A. B.	426111-041	
6 X 4 X 10	125 LB.	B. F. & A.I.	426153-011	
6 X 4 X 10	250 LB.	D.I.	426154-011	
6 X 4 X 10	125 LB.	A. B.	426153-041	
6 X 5 X 10	125 LB.	B. F. & A.I.	427238-011	
6 X 5 X 10	250 LB.	D.I.	427239-041	
6 X 5 X 10	125 LB.	A. B.	427238-041	
8 X 6 X 10	125 LB.	B. F. & A.I.	426605-011	
8 X 6 X 10	250 LB.	D.I.	426606-031	
8 X 6 X 10	125 LB.	A. B.	426605-041	
4 X 3 X 11 1/2	125 LB.	B. F. & A.I.	426147-011	
4 X 3 X 11 1/2	250 LB.	D.I.	426148-031	
4 X 3 X 11 1/2	125 LB.	A. B.	426147-041	
5 X 4 X 11 1/2	125 LB.	B. F. & A.I.	426151-011	
5 X 4 X 11 1/2	250 LB.	D.I.	426152-031	
5 X 4 X 11 1/2	125 LB.	A. B.	426151-041	

CASINGS CONTINUED ON PAGE11

4030 PUMP PARTS

CENTERLINE DISCHARGE

"M" SIZE 1 1/4" IMPELLER BORE ----- 1 1/8" SHAFT DIAMETER AT COUPLER

1 5/8" MECHANICAL SEAL

ITEM 100 CASING				
PUMP SIZE	PRESSURE RATING		PART NUMBER	BAR CODE
6 X 5 X 11 1/2	125 LB.	B. F. & A.I.	426155-011	
6 X 5 X 11 1/2	250 LB.	D.I.	426156-031	
6 X 5 X 11 1/2	125 LB.	A. B.	426155-041	
8 X 6 X 11 1/2	125 LB.	B. F. & A.I.	426159-011	
8 X 6 X 11 1/2	250 LB.	D.I.	426160-031	
8 X 6 X 11 1/2	125 LB.	A. B.	426159-041	
3 X 1 1/2 X 13	125 LB.	B. F. & A.I.	426607-011	
3 X 1 1/2 X 13	250 LB.	D.I.	426608-031	
3 X 1 1/2 X 13	125 LB.	A. B.	426607-041	
3 X 2 X 13	125 LB.	B. F. & A.I.	426165-011	
3 X 2 X 13	250 LB.	D.I.	426166-031	
3 X 2 X 13	125 LB.	A. B.	426165-041	
4 X 3 X 13	125 LB.	B. F. & A.I.	426169-011	
4 X 3 X 13	250 LB.	D.I.	426170-031	
4 X 3 X 13	125 LB.	A. B.	426169-041	
6 X 4 X 13 [†]	125 LB.	B. F. & A.I.	427195-011	
6 X 4 X 13 [†]	250 LB.	D.I.	427196-031	
6 X 4 X 13H	125 LB.	B. F. & A.I.	427195-017	
6 X 4 X 13H	250 LB.	D.I.	427196-037	
6 x 5 x 13	125 LB.	B.F. & A.I.	427191-011	
6 x 5 x 13	250 LB.	D.I.	427192-031	
6 x 5 x 13H	125 LB.	B.F. & A.I.	427191-017	
6 x 5 x 13H	250 LB.	D.I.	427192-037	
8 X 6 X 13	125 LB.	B. F. & A.I.	426177-011	
8 X 6 X 13	250 LB.	D.I.	426178-031	
8 X 6 X 13	125 LB.	A. B.	426177-041	

Notes: † For 6x4x13 units pre-June 2013, casing & impeller must be replaced together. Contact Armstrong for details.

4030 PUMP PARTS

CENTERLINE DISCHARGE

"M" SIZE 1 1/4" IMPELLER BORE ----- 1 1/8" SHAFT DIAMETER AT COUPLER

1 5/8" MECHANICAL SEAL

ITEM 80 IMPELLER*

PUMP SIZE	CONSTRUCTION**	PART NUMBER	BAR CODE
4 X 3 X 6	B. F. & A. B.	427118-041	
4 X 3 X 6	A. I. & D. I.	427118-011	
3 X 1 1/2 X 8	B. F. & A. B.	427122-041	
3 X 1 1/2 X 8	A. I. & D. I.	427122-011	
3 X 2 X 8	B. F. & A. B.	427126-041	
3 X 2 X 8	A. I. & D. I.	427126-011	
3 X 2 1/2 X 8	B. F. & A. B.	427128-041	
3 X 2 1/2 X 8	A. I. & D. I.	427128-031	
4 X 3 X 8	B. F. & A. B.	427130-041	
4 X 3 X 8	A. I. & D. I.	427130-011	
5 X 4 X 8	B. F. & A. B.	427138-041	
5 X 4 X 8	A. I. & D. I.	427138-011	
6 X 4 X 8	B. F. & A. B.	427138-041	
6 X 4 X 8	A. I. & D. I.	427138-011	
8 X 8 X 8	B. F. & A. B.	427918-041	
8 X 8 X 8	A. I. & D. I.	427918-011	
2 X 1 X 10	B. F. & A. B.	427152-041	
2 X 1 X 10	A. I. & D. I.	427152-011	
2 X 1.5 X 10	B. F. & A. B.	426256-041	
2 X 1.5 X 10	A. I. & D. I.	426256-011	

Notes: * Impeller Part Numbers are for unbalanced, full diameter impellers. Always specify the Pump Serial Number. If possible, measure the diameter of the impeller being replaced.

** B. F. Denotes "Bronze Fitted" construction. Parts in contact with the pumped liquid are bronze or copper, except casing and adapter.

A. I. Denotes "All Iron" construction. Parts in contact with the pumped liquid are cast iron or steel, except shaft sleeve & mechanical seal.

IMPELLERS CONTINUED ON PAGE 13

4030 PUMP PARTS

CENTERLINE DISCHARGE

"M" SIZE 1 1/4" IMPELLER BORE ----- 1 1/8" SHAFT DIAMETER AT COUPLER

1 5/8" MECHANICAL SEAL

ITEM 80 IMPELLER*

PUMP SIZE	CONSTRUCTION**	PART NUMBER	BAR CODE
3 X 1 1/2 X 10	B. F. & A. B.	427152-041	
3 X 1 1/2 X 10	A. I. & D. I.	427152-011	
3 X 2 X 10	B. F. & A. B.	427164-041	
3 X 2 X 10	A. I. & D. I.	427164-011	
3 X 2 1/2 X 10	B. F. & A. B.	427124-041	
3 X 2 1/2 X 10	A. I. & D. I.	427124-011	
4 X 3 X 10	B. F. & A. B.	427150-041	
4 X 3 X 10	A. I. & D. I.	427150-011	
5 X 4 X 10	B. F. & A. B.	427154-041	
5 X 4 X 10	A. I. & D. I.	427154-011	
6 X 4 X 10	B. F. & A. B.	427154-041	
6 X 4 X 10	A. I. & D. I.	427154-011	
6 X 5 X 10	B. F. & A. B.	427160-041	
6 X 5 X 10	A. I. & D. I.	427160-011	
8 X 6 X 10	B. F. & A. B.	427157-041	
8 X 6 X 10	A. I. & D. I.	427157-011	

Notes: * Impeller Part Numbers are for unbalanced, full diameter impellers. Always specify the Pump Serial Number. If possible, measure the diameter of the impeller being replaced.

** B. F. Denotes "Bronze Fitted" construction. Parts in contact with the pumped liquid are bronze or copper, except casing and adapter.

A. I. Denotes "All Iron" construction. Parts in contact with the pumped liquid are cast iron or steel, except shaft sleeve & mechanical seal.

IMPELLERS CONTINUED ON PAGE 14

4030 PUMP PARTS

CENTERLINE DISCHARGE

"M" SIZE 1 1/4" IMPELLER BORE ----- 1 1/8" SHAFT DIAMETER AT COUPLER

1 5/8" MECHANICAL SEAL

ITEM 80 IMPELLER*

PUMP SIZE	CONSTRUCTION**	PART NUMBER	BAR CODE
4 X 3 X 11 1/2	B. F. & A. B.	426282-041	
4 X 3 X 11 1/2	A. I. & D. I.	426282-011	
5 X 4 X 11 1/2	B. F. & A. B.	426284-041	
5 X 4 X 11 1/2	A. I. & D. I.	426284-011	
6 X 5 X 11 1/2	B. F. & A. B.	426288-041	
6 X 5 X 11 1/2	A. I. & D. I.	426288-011	
8 X 6 X 11 1/2	B. F. & A. B.	426289-041	
8 X 6 X 11 1/2	A. I. & D. I.	426289-011	
3 X 1 1/2 X 13	B. F. & A. B.	427161-041	
3 X 1 1/2 X 13	A. I. & D. I.	427161-011	
3 X 2 X 13	B. F. & A. B.	427165-041	
3 X 2 X 13	A. I. & D. I.	427165-011	
4 X 3 X 13	B. F. & A. B.	427175-041	
4 X 3 X 13	A. I. & D. I.	427175-011	
6 X 4 X 13 [†]	B.F. & A.B	427186-041	
6 X 4 X 13 [†]	A. I. & D.I	427186-011	
6 X 4 X 13H	B.F. & A.B	427182-041	
6 X 4 X 13H	A. I. & D.I	427182-011	
6 x 5 x 13	B.F.	427182-041	
6 x 5 x 13H	B.F.	427177-041	
8 X 6 X 13	B. F. & A. B.	427177-041	
8 X 6 X 13	A. I. & D. I.	427177-011	

Notes: * Impeller Part Numbers are for unbalanced, full diameter impellers. Always specify the Pump Serial Number. If possible, measure the diameter of the impeller being replaced.

** B. F. Denotes "Bronze Fitted" construction. Parts in contact with the pumped liquid are bronze or copper, except casing and adapter.

A. I. Denotes "All Iron" construction. Parts in contact with the pumped liquid are cast iron or steel, except shaft sleeve & mechanical seal.

† For 6x4x13 units pre-June 2013, casing & impeller must be replaced together. Contact Armstrong for details.

4030 PUMP PARTS

CENTERLINE DISCHARGE

"M" SIZE 1 1/4" IMPELLER BORE ----- 1 1/8" SHAFT DIAMETER AT COUPLER

1 5/8" MECHANICAL SEAL

ITEM 104 CASING CAPSCREW & WASHER				
PUMP SIZE	NO. REQ'D	SIZE	PART NUMBER	BAR CODE
4 X 3 X 6	8	CAPSCREW 1/2" - 13NC X 1 1/4"LG.	911125-110	
	8	WASHER 1/2" - SAE FLAT	927117-100	
3 X 1 1/2 X 8	8	CAPSCREW	911129-112	
3 X 2 X 8		5/8" - 11NC X 1 1/2"LG.		
3 X 2 1/2 X 8				
4 X 3 X 8				
5 X 4 X 8		WASHER		
6 X 4 X 8W	8	5/8" - SAE FLAT	927121-100	
8 X 8 X 8				
2 X 1 X 10	12	CAPSCREW	911129-112	
2 X 1.5 X 10		5/8" - 11NC X 1 1/2"LG.		
3 X 1 1/2 X 10				
3 X 2 X 10				
3 X 2 1/2 X 10				
4 X 3 X 10				
5 X 4 X 10				
6 X 4 X 10	12	WASHER	927121-100	
6 X 5 X 10		5/8 - SAE FLAT		
8 X 6 X 10				

CASING CAPSCREWS AND WASHERS CONTINUED ON PAGE 16

4030 PUMP PARTS

CENTERLINE DISCHARGE

"M" SIZE 1 1/4" IMPELLER BORE ----- 1 1/8" SHAFT DIAMETER AT COUPLER

1 5/8" MECHANICAL SEAL

ITEM 104 CASING CAPSCREW & WASHER (cont'd)

PUMP SIZE	NO. REQ'D	SIZE	PART NUMBER	BAR CODE
4 X 3 X 11 1/2		CAPSCREW		
5 X 4 X 11 1/2	16	1/2" - 13NC X 1 1/2"LG.	911125-112	
6 X 5 X 11 1/2		WASHER		
8 X 6 X 11 1/2	16	1/2" - SAE FLAT	927117-100	
3 X 1 1/2 X 13		CAPSCREW		
3 X 2 X 13	16	5/8" - 11NC X 1 1/2"LG.	911129-112	
4 X 3 X 13				
6 X 4 X 13		WASHER		
6 X 4 X 13H				
6 x 5 x 13				
6 x 5 x 13H				
8 X 6 X 13	16	5/8" - SAE FLAT	927121-100	

4030 PUMP PARTS

CENTERLINE DISCHARGE

"M" SIZE 1 1/4" IMPELLER BORE ----- 1 1/8" SHAFT DIAMETER AT COUPLER

1 5/8" MECHANICAL SEAL

ITEM 40 ADAPTER				
125 LB. -- BRONZE FITTED & ALL IRON CONSTRUCTION				
PUMP SIZE	FRAME SIZES			BAR CODE
	56 143 - 145T	213 -215T 254 - 256T	284 - 286T/284 - 286TS 324 - 326T/324 - 326TS 364 - 365T/364 - 365TS/404TS	
4 X 3 X 6		426748-011		
3 X 1 1/2 X 8			426751-011	
3 X 2 X 8			426751-011	
3 X 2 1/2 X 8		426751-011	426751-011	
4 X 3 X 8		426751-011	426751-011	
5 X 4 X 8		426751-015	426751-015	
6 X 4 X 8		426751-015	426751-015	
8 X 8 X 8		426751-015		
2 X 1 X 10	426755-011	426755-011	426755-011	
2 X 1.5 X 10	426755-011	426755-011	426755-011	
3 X 1 1/2 X 10	426755-011	426755-011	426755-011	
3 X 2 X 10		426755-011	426755-011	
3 X 2 1/2 X 10		426755-015	426755-015	
4 X 3 X 10			426755-015	
5 X 4 X 10		426755-015	426755-015	
6 X 4 X 10		426755-015	426755-015	
6 X 5 X 10		426755-015	426755-015	

C.I. ADAPTERS CONTINUED ON PAGE 18

4030 PUMP PARTS

CENTERLINE DISCHARGE

"M" SIZE 1 1/4" IMPELLER BORE ----- 1 1/8" SHAFT DIAMETER AT COUPLER

1 5/8" MECHANICAL SEAL

ITEM 40 ADAPTER

125 LB. -- BRONZE FITTED & ALL IRON CONSTRUCTION (cont'd)

PUMP SIZE	FRAME SIZES			BAR CODE
	213 - 213T	254 - 256T	284 - 286T/284 - 286TS 324 - 326T/324 - 326TS 364 - 365T/364 - 365TS/404TS	
8 X 6 X 10		426755-011	426755-011	
4 X 3 X 11 1/2			426742-011	
5 X 4 X 11 1/2	426742-011		426742-011	
6 X 5 X 11 1/2		426742-011	426742-011	
8 X 6 X 11 1/2		426742-011	426742-011	
3 X 1 1/2 X 13	426759-011	426759-011	426759-011	
3 X 2 X 13	426759-011	426759-011	426759-011	
4 X 3 X 13	426759-011	426759-011	426759-011	
6 X 4 X 13		426759-011	426759-011	
6 X 4 X 13H		426759-011	426759-011	
6 x 5 x 13		426759-011	426759-011	
6 x 5 x 13H		426759-011	426759-011	
8 X 6 X 13		426759-011	426759-011	

4030 PUMP PARTS

CENTERLINE DISCHARGE

"M" SIZE 1 1/4" IMPELLER BORE ----- 1 1/8" SHAFT DIAMETER AT COUPLER

1 5/8" MECHANICAL SEAL

ITEM 40 ADAPTER				
250 LB. -- DUCTILE IRON CONSTRUCTION				
PUMP SIZE	FRAME SIZES			BAR CODE
	56 143 - 145T	213 -215T 254 - 256T	284 - 286T/284 - 286TS 324 - 326T/324 - 326TS 364 - 365T/364 - 365TS/404TS	
4 X 3 X 6		426748-031		
3 X 1 1/2 X 8			426751-031	
3 X 2 X 8			426751-031	
3 X 2 1/2 X 8		426751-031	426751-031	
4 X 3 X 8		426751-031	426751-031	
5 X 4 X 8		426751-035	426751-035	
6 X 4 X 8		426751-035	426751-035	
8 X 8 X 8		426751-035		
2 X 1 X 10	426755-031	426755-031	426755-031	
2 X 1.5 X 10	426755-031	426755-031	426755-031	
3 X 1 1/2 X 10	426755-031	426755-031	426755-031	
3 X 2 X 10		426755-031	426755-031	
3 X 2 1/2 X 10		426755-035	426755-035	
4 X 3 X 10			426755-035	
5 X 4 X 10		426755-035	426755-035	
6 X 4 X 10			426755-035	
6 X 5 X 10		426755-035	426755-035	

DUCTILE IRON ADAPTERS CONTINUED ON PAGE 20

4030 PUMP PARTS

CENTERLINE DISCHARGE

"M" SIZE 1 1/4" IMPELLER BORE ----- 1 1/8" SHAFT DIAMETER AT COUPLER

1 5/8" MECHANICAL SEAL

ITEM 40 ADAPTER

250 LB. -- DUCTILE IRON CONSTRUCTION (cont'd)

PUMP SIZE	FRAME SIZES			BAR CODE
	213 - 213T	254 - 256T	284 - 286T/284 - 286TS 324 - 326T/324 - 326TS 364 - 365T/364 - 365TS/404TS	
8 X 6 X 10		426755-031	426755-031	
4 X 3 X 11 1/2			426742-031	
5 X 4 X 11 1/2	426755-031		426742-031	
6 X 5 X 11 1/2		426742-031	426742-031	
8 X 6 X 11 1/2		426742-031	426742-031	
3 X 1 1/2 X 13	426759-031	426759-031	426759-031	
3 X 2 X 13	426759-031	426759-031	426759-031	
4 X 3 X 13	426759-031	426759-031	426759-031	
6 X 4 X 13		426759-031	426759-031	
6 X 4 X 13H		426759-031	426759-031	
6 x 5 x 13		426759-031	426759-031	
6 x 5 x 13H		426759-031	426759-031	
8 X 6 X 13		426759-031	426759-031	

4030 PUMP PARTS

CENTERLINE DISCHARGE

"M" SIZE 1 1/4" IMPELLER BORE ----- 1 1/8" SHAFT DIAMETER AT COUPLER

1 5/8" MECHANICAL SEAL

ITEM 40 ADAPTER				
125 LB. -- ALL BRONZE CONSTRUCTION				
PUMP SIZE	FRAME SIZES			BAR CODE
	56 143 - 145T	213 - 215T 254 - 256T	284 - 286T/284 - 286TS 324 - 326T/324 - 326TS 364 - 365T/364 - 365TS/404TS	
4 X 3 X 6		426748-041		
3 X 1 1/2 X 8			426751-041	
3 X 2 X 8			426751-041	
3 X 2 1/2 X 8		426751-041	426751-041	
4 X 3 X 8		426751-041	426751-041	
5 X 4 X 8		426751-045	426751-045	
6 X 4 X 8		426751-045	426751-045	
8 X 8 X 8		426751-045		
2 X 1 X 10	426755-041	426755-041	426755-041	
2 X 1.5 X 10	426755-041	426755-041	426755-041	
3 X 1 1/2 X 10	426755-041	426755-041	426755-041	
3 X 2 X 10		426755-041	426755-041	
3 X 2 1/2 X 10		426755-045	426755-045	
4 X 3 X 10			426755-045	
5 X 4 X 10		426755-045	426755-045	
6 X 4 X 10			426755-045	
6 X 5 X 10		426755-045	426755-045	

BRONZE ADAPTERS CONTINUED ON PAGE 22

4030 PUMP PARTS

CENTERLINE DISCHARGE

"M" SIZE 1 1/4" IMPELLER BORE ----- 1 1/8" SHAFT DIAMETER AT COUPLER

1 5/8" MECHANICAL SEAL

ITEM 40 ADAPTER

125 LB. -- ALL BRONZE CONSTRUCTION

PUMP SIZE	FRAME SIZES			BAR CODE
	213 - 213T	254 - 256T	284 - 286T/284 - 286TS 324 - 326T/324 - 326TS 364 - 365T/364 - 365TS/404TS	
8 X 6 X 10		426755-041	426755-041	
4 X 3 X 11 1/2			426755-041	
5 X 4 X 11 1/2	426755-041		426755-041	
6 X 5 X 11 1/2		426742-041	426755-041	
8 X 6 X 11 1/2		426742-041	426742-041	
3 X 1 1/2 X 13	426759-041	426759-041	426759-041	
3 X 2 X 13	426759-041	426759-041	426759-041	
4 X 3 X 13	426759-041	426759-041	426759-041	
6 X 4 X 13		426759-041	426759-041	
6 X 4 X 13H		426759-041	426759-041	
6 x 5 x 13		426759-041	426759-041	
6 x 5 x 13H		426759-041	426759-041	
8 X 6 X 13		426759-041	426759-041	

4030 PUMP PARTS

CENTERLINE DISCHARGE

"M" SIZE 1 1/4" IMPELLER BORE ----- 1 1/8" SHAFT DIAMETER AT COUPLER

1 5/8" MECHANICAL SEAL

ITEM 101 CASING GASKET			
PUMP SIZE	DIMENSIONS O.D X I.D. X THICKNESS	PART NUMBER	BAR CODE
4 X 3 X 6	7" X 6 1/4" X 1/16"	426401-002	
3 X 1 1/2 X 8	9" X 8 1/4" X 1/16"	426401-003	
3 X 2 X 8			
3 X 2 1/2 X 8			
4 X 3 X 8			
5 X 4 X 8			
6 X 4 X 8			
8 X 8 X 8			
2 X 1 X 10	10 15/16" X 10 3/16" X 1/16"	426401-004	
2 X 1.5 X 10			
3 X 1 1/2 X 10			
3 X 2 X 10			
3 X 2 1/2 X 10			
4 X 3 X 10			
5 X 4 X 10			
6 X 4 X 10			
6 X 5 X 10			
8 X 5 X 10			
8 X 6 X 10			
4 X 3 X 11 1/2	12 5/16" X 11 9/16" X 1/16"	426401-006	
5 X 4 X 11 1/2			
6 X 5 X 11 1/2			
8 X 6 X 11 1/2			
3 X 1 1/2 X 13	14" X 13 1/4" X 1/16"	426401-005	
3 X 2 X 13			
4 X 3 X 13			
6 X 4 X 13			
6 X 4 X 13H			
6 x 5 x 13			
6 x 5 x 13H			
8 X 6 X 13			

4030 PUMP PARTS

CENTERLINE DISCHARGE

"M" SIZE 1 1/4" IMPELLER BORE ----- 1 1/8" SHAFT DIAMETER AT COUPLER

1 5/8" MECHANICAL SEAL

ITEM 44 BRG. HSG. CAPSCREW & WASHER

PUMP SIZE	NO. REQ'D	SIZE	PART NUMBER	BAR CODE
4 X 3 X 6				
3 X 1 1/2 X 8				
3 X 2 X 8				
3 X 2 1/2 X 8				
4 X 3 X 8				
5 X 4 X 8				
6 X 4 X 8				
8 X 8 X 8				
2 X 1 X 10				
2 X 1.5 X 10				
3 X 1 1/2 X 10	4	CAPSCREW 1/2" - 16NC X 1 1/4" LG.	911125-110	
3 X 2 X 10				
3 X 2 1/2 X 10				
4 X 3 X 10				
5 X 4 X 10				
6 X 4 X 10				
6 X 5 X 10				
8 X 6 X 10				
4 X 3 X 11 1/2				
5 X 4 X 11 1/2	4	WASHER 1/2" FLAT	927117-100	
6 X 5 X 11 1/2				
8 X 6 X 11 1/2				
3 X 1 1/2 X 13				
3 X 2 X 13				
4 X 3 X 13				
6 X 4 X 13				
6 X 4 X 13H				
6 x 5 x 13				
6 x 5 x 13H				
8 X 6 X 13				

4030 PUMP PARTS

CENTERLINE DISCHARGE

"M" SIZE 1 1/4" IMPELLER BORE ----- 1 1/8" SHAFT DIAMETER AT COUPLER

1 5/8" MECHANICAL SEAL

BEARING FRAME ASSY. (STD. FOR B.F.CONSTRUCTION)			
STEEL SHAFT, PERMANENTLY LUBRICATED BEARINGS			
ITEM NUMBER	DESCRIPTION	PART NUMBER	BAR CODE
	BEARING FRAME ASSEMBLY(1)	426771-000	
26	BEARING HOUSING	426765-012	
21	SHAFT & SLEEVE ASSEMBLY	426761-001	
22	INBOARD BEARING	971101-384	
23	OUTBOARD BEARING	971101-704	
24	LOCKWASHER	426364-007	
25	LOCKNUT	426364-006	
29	BEARING CAP	426767-011	
32	BEARING CAPSCREWS 3/8 - 16NC X 1 1/4" LG (4 REQ'D)	911121-110	
36	IMPELLER KEY	428161-714	
36	COUPLER KEY	428161-714	
39	WATER SLINGER	419315-000	

NOTE (1) ITEMS 21 TO 39 INCLUSIVE ARE INCLUDED IN THE BEARING FRAME ASSEMBLY

COMMON PARTS			
ITEM NUMBER	DESCRIPTION	PART NUMBER BF & AI	BAR CODE
62K	MECHANICAL SEAL KIT	975000-984**	
83	IMPELLER WASHER	425742-003	
86	S/S IMPELLER CAPSCREW	911900-119	
114	SUP. FT. ADJUSTING SCREW 3/8"-16NC X 1" LG. (1 req'd)	911121-108	
113	ADJUSTING SCREW NUT 3/8"-16NC JAM (1req'd)	913521-100	

** For liquids above 200°F/93°C use 9975001-833 (-633 if potable drinking water above 200°F/93°C) For glycols above 30% by weight use 9975001-837 (-838 if above 200°F/93°C)

4030 PUMP PARTS

CENTERLINE DISCHARGE

"M" SIZE 1 1/4" IMPELLER BORE ----- 1 1/8" SHAFT DIAMETER AT COUPLER

1 5/8" MECHANICAL SEAL

BEARING FRAME ASSY. (STD. FOR A.B.CONST.)			
S/S SHAFT, PERMANENTLY LUBRICATED BEARINGS			
ITEM NUMBER	DESCRIPTION	PART NUMBER	BAR CODE
	BEARING FRAME ASSEMBLY(1)	426771-071	
26	BEARING HOUSING	426765-011	
21	SHAFT & SLEEVE ASSEMBLY	426761-071	
22	INBOARD BEARING	971101-384	
23	OUTBOARD BEARING	971101-704	
24	LOCKWASHER	426364-007	
25	LOCKNUT	426364-006	
29	BEARING CAP	426767-011	
32	BEARING CAPSCREWS 3/8 - 16NC X 1 1/4" LG (4 REQ'D)	911121-110	
36	IMPELLER KEY	428161-714	
36	COUPLER KEY	428161-714	
39	WATER SLINGER	419315-000	
NOTE (1) ITEMS 21 TO 39 INCLUSIVE ARE INCLUDED IN THE BEARING FRAME ASSEMBLY			

COMMON PARTS			
ITEM NUMBER	DESCRIPTION	PART NUMBER BF & AI	BAR CODE
62K	MECHANICAL SEAL KIT	975000-984**	
83	IMPELLER WASHER	425742-003	
86	S/S IMPELLER CAPSCREW	911900-119	
114	SUP. FT. ADJUSTING SCREW 3/8"-16NC X 1" LG. (1 req'd)	911121-108	
113	ADJUSTING SCREW NUT 3/8"-16NC JAM (1req'd)	913521-100	

** For liquids above 200°F/93°C use 9975001-833 (-633 if potable drinking water above 200°F/93°C) For glycols above 30% by weight use 9975001-837 (-838 if above 200°F/93°C)

4030 PUMP PARTS

CENTERLINE DISCHARGE

"M" SIZE 1 1/4" IMPELLER BORE ----- 1 1/8" SHAFT DIAMETER AT COUPLER

1 5/8" MECHANICAL SEAL

BEARING FRAME ASSEMBLY

STEEL SHAFT, REGREASEABLE BEARINGS

ITEM NUMBER	DESCRIPTION	PART NUMBER	BAR CODE
	BEARING FRAME ASSEMBLY(1)	426772-000	
26	BEARING HOUSING	426765-012	
21	SHAFT & SLEEVE ASSEMBLY	426761-001	
22	INBOARD BEARING	971101-383	
23	OUTBOARD BEARING	971101-703	
24	LOCKWASHER	426364-007	
25	LOCKNUT	426364-006	
29	BEARING CAP	426767-012	
32	BEARING CAPSCREWS 3/8 - 16NC X 1 1/4" LG (4 REQ'D)	911121-110	
37	GREASE FITTING	425030-011	
36	IMPELLER KEY	428161-714	
36	COUPLER KEY	428161-714	
39	WATER SLINGER	419315-000	

NOTE (1) ITEMS 21 TO 39 INCLUSIVE ARE INCLUDED IN THE BEARING FRAME ASSEMBLY

COMMON PARTS

ITEM NUMBER	DESCRIPTION	PART NUMBER BF & AI	BAR CODE
62K	MECHANICAL SEAL KIT	975000-984**	
83	IMPELLER WASHER	425742-003	
86	S/S IMPELLER CAPSCREW	911900-119	
114	SUP. FT. ADJUSTING SCREW 3/8"-16NC X 1" LG. (1 req'd)	911121-108	
113	ADJUSTING SCREW NUT 3/8"-16NC JAM (1req'd)	913521-100	

** For liquids above 200°F/93°C use 9975001-833 (-633 if potable drinking water above 200°F/93°C) For glycols above 30% by weight use 9975001-837 (-838 if above 200°F/93°C)

4030 PUMP PARTS

CENTERLINE DISCHARGE

"MHD" SIZE 1 1/4" IMPELLER BORE ----- 1 1/8" SHAFT DIAMETER AT COUPLER

1 5/8" MECHANICAL SEAL

BEARING FRAME ASSY. (ALT. FOR A.B. CONSTRUCTION)

S/S SHAFT, REGREASEABLE BEARINGS

ITEM NUMBER	DESCRIPTION	PART NUMBER	BAR CODE
	BEARING FRAME ASSEMBLY(1)	426772-071	
26	BEARING HOUSING	426765-012	
21	SHAFT & SLEEVE ASSEMBLY	426761-071	
22	INBOARD BEARING	971101-383	
23	OUTBOARD BEARING	971101-703	
24	LOCKWASHER	426364-007	
25	LOCKNUT	426364-006	
29	BEARING CAP	426767-012	
	BEARING CAPSCREWS		
32	3/8 - 16NC X 1 1/4" LG (4 REQ'D)	911121-110	
-	GREASE FITTING	425030-011	
36	IMPELLER KEY	428161-714	
36	COUPLER KEY	428161-714	
39	WATER SLINGER	419315-000	

NOTE (1) ITEMS 21 TO 39 INCLUSIVE ARE INCLUDED IN THE BEARING FRAME ASSEMBLY

COMMON PARTS

ITEM NUMBER	DESCRIPTION	PART NUMBER BF & AI	BAR CODE
62K	MECHANICAL SEAL KIT	975000-984**	
83	IMPELLER WASHER	425742-003	
86	S/S IMPELLER CAPSCREW	911900-119	
	SUP. FT. ADJUSTING SCREW		
114	3/8"-16NC X 1" LG. (1 req'd)	911121-108	
	ADJUSTING SCREW NUT		
113	3/8"-16NC JAM (1req'd)	913521-100	

** For liquids above 200°F/93°C use 9975001-833 (-633 if potable drinking water above 200°F/93°C) For glycols above 30% by weight use 9975001-837 (-838 if above 200°F/93°C)

4030 PUMP PARTS

CENTERLINE DISCHARGE

"M" SIZE 1 1/4" IMPELLER BORE ----- 1 1/8" SHAFT DIAMETER AT COUPLER

1 5/8" MECHANICAL SEAL

BEARING FRAME ASSEMBLY

STEEL SHAFT, OIL LUBRICATED

ITEM NUMBER	DESCRIPTION	PART NUMBER	BAR CODE
	BEARING FRAME ASSEMBLY(1)	426773-000	
26	BEARING HOUSING	426765-013	
21	SHAFT & SLEEVE ASSEMBLY	426761-001	
22	INBOARD BEARING	971101-917	
23	OUTBOARD BEARING	971101-918	
24	LOCKWASHER	426364-007	
25	LOCKNUT	426364-006	
28	OUTBOARD OIL SEAL	965001-150	
29	BEARING CAP	426767-013	
30	INBOARD OIL SEAL	965001-120	
31	"O" RING	961131-243	
32	BEARING CAPSCREWS 3/8 - 16 X 1 1/4" LG (4 REQ'D)	911121-110	
33	OIL VIEW GAUGE	116904-000	
34	AIR VENT	407444-000	
35	PIPE PLUG 1/8" NPT (1 REQ'D)	937105-200	
36	IMPELLER KEY	428161-714	
36	COUPLER KEY	428161-714	
39	WATER SLINGER	419315-000	

NOTE (1) ITEMS 21 TO 39 INCLUSIVE ARE INCLUDED IN THE BEARING FRAME ASSEMBLY

COMMON PARTS

ITEM NUMBER	DESCRIPTION	PART NUMBER BF & AI	BAR CODE
62K	MECHANICAL SEAL KIT	975000-984**	
83	IMPELLER WASHER	425742-003	
86	S/S IMPELLER CAPSCREW	911900-119	
114	SUP. FT. ADJUSTING SCREW 3/8"-16NC X 1" LG. (1 req'd)	911121-108	
113	ADJUSTING SCREW NUT 3/8"-16NC JAM (1req'd)	913521-100	

** For liquids above 200°F/93°C use 9975001-833 (-633 if potable drinking water above 200°F/93°C) For glycols above 30% by weight use 9975001-837 (-838 if above 200°F/93°C)

4030 PUMP PARTS

CENTERLINE DISCHARGE

"M" SIZE 1 1/4" IMPELLER BORE ----- 1 1/8" SHAFT DIAMETER AT COUPLER

1 5/8" MECHANICAL SEAL

BEARING FRAME ASSY. (ALT. FOR A.B. CONSTRUCTION)

STAINLESS STEEL SHAFT, OIL LUBRICATED

ITEM NUMBER	DESCRIPTION	PART NUMBER	BAR CODE
	BEARING FRAME ASSEMBLY(1)	426773-071	
26	BEARING HOUSING	426765-013	
21	SHAFT & SLEEVE ASSEMBLY	426761-071	
22	INBOARD BEARING	971101-917	
23	OUTBOARD BEARING	971101-918	
24	LOCKWASHER	426364-007	
25	LOCKNUT	426364-006	
28	OUTBOARD OIL SEAL	965001-150	
29	BEARING CAP	426767-013	
30	INBOARD OIL SEAL	965001-120	
31	"O" RING	961131-243	
32	BEARING CAPSCREWS 3/8 - 16NC X 1 1/4" LG (4 REQ'D)	911121-110	
33	OIL VIEW GAUGE	116904-000	
34	AIR VENT	407444-000	
35	PIPE PLUG 1/8" NPT (1 REQ'D)	937105-200	
36	IMPELLER KEY	428161-714	
36	COUPLER KEY	428161-714	
39	WATER SLINGER	419315-000	

NOTE (1) ITEMS 21 TO 39 INCLUSIVE ARE INCLUDED IN THE BEARING FRAME ASSEMBLY

COMMON PARTS

ITEM NUMBER	DESCRIPTION	PART NUMBER BF & AI	BAR CODE
62K	MECHANICAL SEAL KIT	975000-984**	
83	IMPELLER WASHER	425742-003	
86	S/S IMPELLER CAPSCREW	911900-119	
114	SUP. FT. ADJUSTING SCREW 3/8"-16NC X 1" LG. (1 req'd)	911121-108	
113	ADJUSTING SCREW NUT 3/8"-16NC JAM (1req'd)	913521-100	

** For liquids above 200°F/93°C use 9975001-833 (-633 if potable drinking water above 200°F/93°C) For glycols above 30% by weight use 9975001-837 (-838 if above 200°F/93°C)

4030 PUMP PARTS

CENTERLINE DISCHARGE

"MHD" SIZE 1 1/4" IMPELLER BORE ----- 1 1/8" SHAFT DIAMETER AT COUPLER

1 5/8" MECHANICAL SEAL

BEARING FRAME ASSEMBLY

STEEL SHAFT, REGREASEABLE BEARINGS

ITEM NUMBER	DESCRIPTION	PART NUMBER	BAR CODE
	BEARING FRAME ASSEMBLY(1)	427816-000	
26	BEARING HOUSING	426774-012	
21	SHAFT & SLEEVE ASSEMBLY	427833-001	
22	INBOARD BEARING	971101-383	
23	OUTBOARD BEARING (Double Row 50mm Angular Contact)	971115-901	
Not Shown	GREASE SHIELD	971900-003	
24	LOCKWASHER	426364-003	
25	LOCKNUT	426364-004	
29	BEARING CAP	427813-012	
	BEARING CAPSCREWS		
32	3/8 - 16NC X 1 1/4" LG (4 REQ'D)	911121-110	
37	GREASE FITTING	425030-011	
36	IMPELLER KEY	428161-714	
36	COUPLER KEY	428161-714	
39	WATER SLINGER	419315-000	

NOTE (1) ITEMS 21 TO 39 INCLUSIVE ARE INCLUDED IN THE BEARING FRAME ASSEMBLY

COMMON PARTS

ITEM NUMBER	DESCRIPTION	PART NUMBER BF & AI	BAR CODE
62K	MECHANICAL SEAL KIT	975000-984**	
83	IMPELLER WASHER	425742-003	
86	S/S IMPELLER CAPSCREW	911900-119	
114	SUP. FT. ADJUSTING SCREW 3/8"-16NC X 1" LG. (1 req'd)	911121-108	
113	ADJUSTING SCREW NUT 3/8"-16NC JAM (1req'd)	913521-100	

** For liquids above 200°F/93°C use 9975001-833 (-633 if potable drinking water above 200°F/93°C) For glycols above 30% by weight use 9975001-837 (-838 if above 200°F/93°C)

4030 PUMP PARTS

CENTERLINE DISCHARGE

"MHD" SIZE 1 1/4" IMPELLER BORE ----- 1 1/8" SHAFT DIAMETER AT COUPLER

1 5/8" MECHANICAL SEAL

BEARING FRAME ASSEMBLY

S/S SHAFT, REGREASEABLE BEARINGS

ITEM NUMBER	DESCRIPTION	PART NUMBER	BAR CODE
	BEARING FRAME ASSEMBLY(1)	427816-071	
26	BEARING HOUSING	426774-012	
21	SHAFT & SLEEVE ASSEMBLY	427833-071	
22	INBOARD BEARING	971101-383	
23	OUTBOARD BEARING (Double Row 50mm Angular Contact)	971115-901	
Not Shown	GREASE SHIELD	971900-003	
24	LOCKWASHER	426364-003	
25	LOCKNUT	426364-004	
29	BEARING CAP	427813-012	
32	BEARING CAPSCREWS 3/8 - 16NC X 1 1/4" LG (4 REQ'D)	911121-110	
-	GREASE FITTING	425030-011	
36	IMPELLER KEY	428161-714	
36	COUPLER KEY	428161-714	
39	WATER SLINGER	419315-000	

NOTE (1) ITEMS 21 TO 39 INCLUSIVE ARE INCLUDED IN THE BEARING FRAME ASSEMBLY

COMMON PARTS

ITEM NUMBER	DESCRIPTION	PART NUMBER BF & AI	BAR CODE
62K	MECHANICAL SEAL KIT	975000-984**	
83	IMPELLER WASHER	425742-003	
86	S/S IMPELLER CAPSCREW	911900-119	
114	SUP. FT. ADJUSTING SCREW 3/8"-16NC X 1" LG. (1 req'd)	911121-108	
113	ADJUSTING SCREW NUT 3/8"-16NC JAM (1req'd)	913521-100	

** For liquids above 200°F/93°C use 9975001-833 (-633 if potable drinking water above 200°F/93°C) For glycols above 30% by weight use 9975001-837 (-838 if above 200°F/93°C)

4030 PUMP PARTS

CENTERLINE DISCHARGE

"MHD" SIZE 1 1/4" IMPELLER BORE ----- 1 1/8" SHAFT DIAMETER AT COUPLER
1 5/8" MECHANICAL SEAL

BEARING FRAME ASSEMBLY

STEEL SHAFT, OIL LUBRICATED

ITEM NUMBER	DESCRIPTION	PART NUMBER	BAR CODE
	BEARING FRAME ASSEMBLY(1)	427817-000	
26	BEARING HOUSING	426774-013	
21	SHAFT & SLEEVE ASSEMBLY	427833-001	
22	INBOARD BEARING	971101-383	
23	OUTBOARD BEARING (Double Row 50mm Angular Contact)	971115-901	
Not Shown	BEARING SHIELD	971900-003	
24	LOCKWASHER	426364-003	
25	LOCKNUT	426364-004	
28	OUTBOARD OIL SEAL	965001-150	
29	BEARING CAP	427813-013	
30	INBOARD OIL SEAL	965001-120	
31	"O" RING	961131-243	
32	BEARING CAPSCREWS 3/8 - 16 X 1 1/4" LG (4 REQ'D)	911121-110	
33	OIL VIEW GAUGE	116904-000	
34	AIR VENT	407444-000	
35	PIPE PLUG 1/8" NPT (1 REQ'D)	937105-200	
36	IMPELLER KEY	428161-714	
36	COUPLER KEY	428161-714	
39	WATER SLINGER	419315-000	

NOTE (1) ITEMS 21 TO 39 INCLUSIVE ARE INCLUDED IN THE BEARING FRAME ASSEMBLY

COMMON PARTS

ITEM NUMBER	DESCRIPTION	PART NUMBER BF & AI	BAR CODE
62K	MECHANICAL SEAL KIT	975000-984**	
83	IMPELLER WASHER	425742-003	
86	S/S IMPELLER CAPSCREW	911900-119	
114	SUP. FT. ADJUSTING SCREW 3/8"-16NC X 1" LG. (1 req'd)	911121-108	
113	ADJUSTING SCREW NUT 3/8"-16NC JAM (1req'd)	913521-100	

** For liquids above 200°F/93°C use 9975001-833 (-633 if potable drinking water above 200°F/93°C) For glycols above 30% by weight use 9975001-837 (-838 if above 200°F/93°C)

4030 PUMP PARTS

CENTERLINE DISCHARGE

"MHD" SIZE 1 1/4" IMPELLER BORE ----- 1 1/8" SHAFT DIAMETER AT COUPLER

1 5/8" MECHANICAL SEAL

BEARING FRAME ASSEMBLY

STEEL SHAFT, OIL LUBRICATED

ITEM NUMBER	DESCRIPTION	PART NUMBER	BAR CODE
	BEARING FRAME ASSEMBLY(1)	427817-071	
26	BEARING HOUSING	426774-013	
21	SHAFT & SLEEVE ASSEMBLY	427833-071	
22	INBOARD BEARING	971101-383	
23	OUTBOARD BEARING (Double Row 50mm Angular Contact)	971115-901	
Not Shown	BEARING SHIELD	971900-003	
24	LOCKWASHER	426364-003	
25	LOCKNUT	426364-004	
28	OUTBOARD OIL SEAL	965001-150	
29	BEARING CAP	427813-013	
30	INBOARD OIL SEAL	965001-120	
31	"O" RING	961131-243	
32	BEARING CAPSCREWS 3/8 - 16 X 1 1/4" LG (4 REQ'D)	911121-110	
33	OIL VIEW GAUGE	116904-000	
34	AIR VENT	407444-000	
35	PIPE PLUG 1/8" NPT (1 REQ'D)	937105-200	
36	IMPELLER KEY	428161-714	
36	COUPLER KEY	428161-714	
39	WATER SLINGER	419315-000	

NOTE (1) ITEMS 21 TO 39 INCLUSIVE ARE INCLUDED IN THE BEARING FRAME ASSEMBLY

COMMON PARTS

ITEM NUMBER	DESCRIPTION	PART NUMBER BF & AI	BAR CODE
62K	MECHANICAL SEAL KIT	975000-984**	
83	IMPELLER WASHER	425742-003	
86	S/S IMPELLER CAPSCREW	911900-119	
114	SUP. FT. ADJUSTING SCREW 3/8"-16NC X 1" LG. (1 req'd)	911121-108	
113	ADJUSTING SCREW NUT 3/8"-16NC JAM (1req'd)	913521-100	

** For liquids above 200°F/93°C use 9975001-833 (-633 if potable drinking water above 200°F/93°C) For glycols above 30% by weight use 9975001-837 (-838 if above 200°F/93°C)

4030 PUMP PARTS

CENTERLINE DISCHARGE

"M" SIZE 1 1/4" IMPELLER BORE ----- 1 1/8" SHAFT DIAMETER AT COUPLER

1 5/8" MECHANICAL SEAL

ITEM 110 BEARING HOUSING SUPPORT FOOT		
PUMP SIZE	PART NUMBER	BAR CODE
4 X 3 X 6	426998-002	
3 X 1 1/2 X 8 3 X 2 X 8 3 X 2 1/2 X 8 4 X 3 X 8 5 X 4 X 8 6 X 4 X 8 8 X 8 X 8 2 X 1 X 10 2 X 1.5 X 10 3 X 1 1/2 X 10 3 X 2 X 10 3 X 2 1/2 X 10 4 X 3 X 10	426698-001	
5 X 4 X 10 6 X 4 X 10 6 X 5 X 10 8 X 6 X 10 4 X 3 X 11 1/2**	428488-611	
5 X 4 X 11 1/2 6 X 5 X 11 1/2		
8 X 6 X 11 1/2	426998-005	
3 X 1 1/2 X 13 3 X 2 X 13 4 X 3 X 13 6 X 4 X 13 6 X 4 X 13H	428488-611	
6 x 5 x 13 6 x 5 x 13H	428488-511	
8 X 6 X 13	426998-005	

NOTE **: For Pumps 4 x 3 x 11 1/2, Frame 284T use Part Number 426998-001

4030 PUMP PARTS

CENTERLINE DISCHARGE

"M" SIZE 1 1/4" IMPELLER BORE ----- 1 1/8" SHAFT DIAMETER AT COUPLER

1 5/8" MECHANICAL SEAL

ITEM 106 CASING SUPPORT FOOT

PUMP SIZE	PART NUMBER	BAR CODE
4 X 3 X 6W	NOT REQUIRED	
3 X 1 1/2 X 8	426556-000	
3 X 2 X 8	426555-000	
3 X 2 1/2 X 8	426555-000	
4 X 3 X 8	426555-000	
5 X 4 X 8	426554-000	
6 X 4 X 8W	426554-000	
8 X 8 X 8	426998-001	
2 X 1 X 10	426555-000	
2 X 1.5 X 10	426555-000	
3 X 1 1/2 X 10	NOT REQ'D	
3 X 2 X 10	NOT REQ'D	
3 X 2 1/2 X 10 **	426554-000	
4 X 3 X 10 5 X 4 X 10 6 X 4 X 10 6 X 5 X 10 8 X 6 X 10 4 X 3 X 11 1/2 5 X 4 X 11 1/2 6 X 5 X 11 1/2 8 X 6 X 11 1/2 3 X 1 1/2 X 13 3 X 2 X 13 4 X 3 X 13 6 X 4 X 13 6 X 4 X 13H 6 x 5 x 13 6 x 5 x 13H 8 X 6 X 13	N O T R E Q U I R E D	

4030 PUMP PARTS

CENTERLINE DISCHARGE

"M" SIZE 1 1/4" IMPELLER BORE ----- 1 1/8" SHAFT DIAMETER AT COUPLER

1 5/8" MECHANICAL SEAL

ITEM 108 CASING SUPPORT FOOT UPPER CAPSCREW				
PUMP SIZE	NO. REQ'D	SIZE	PART NUMBER	BAR CODE
4 X 3 X 6	2	1/2-13NC X 1"	911125-108	
3 X 1 1/2 X 8	2	1/2-13NC X 3"	911125-124	
3 X 2 X 8	2	1/2-13NC x 2"	911125-116	
3 X 2 1/2 X 8	2	1/2-13NC X 1"	911125-108	
4 X 3 X 8	2	1/2-13NC x 2"	911125-116	
5 X 4 X 8	2	1/2-13NC X 1"	911125-108	
6 X 4 X 8	2	1/2-13NC X 1"	911125-108	
8 X 8 X 8	2	1/2-13NC X 1"	911125-108	
2 X 1 X 10	2	1/2-13NC x 2"	911125-116	
2 X 1.5 X 10	2	1/2-13NC x 2"	911125-116	
3 X 1 1/2 X 10*	NOT REQ'D			
3 X 2 X 10	NOT REQ'D			
3 X 2 1/2 X 10	2	1/2-13NC X 1"	911125-108	
4 X 3 X 10	N O T R E Q U I R E D			
5 X 4 X 10				
6 X 4 X 10				
6 X 5 X 10				
8 X 6 X 10				
4 X 3 X 11 1/2				
5 X 4 X 11 1/2				
6 X 5 X 11 1/2				
8 X 6 X 11 1/2				
3 X 1 1/2 X 13				
3 X 2 X 13				
4 X 3 X 13				
6 X 4 X 13				
6 X 4 X 13H				
6 x 5 x 13				
6 x 5 x 13H				
8 X 6 X 13				

4030 PUMP PARTS

CENTERLINE DISCHARGE

"M" SIZE 1 1/4" IMPELLER BORE ----- 1 1/8" SHAFT DIAMETER AT COUPLER

1 5/8" MECHANICAL SEAL

ITEM 122 CASING SUPPORT CAPSCREW AND WASHER				
PUMP SIZE	FRAME SIZE 213 - 286TS	BAR CODE	FRAME SIZE 324 - 404TS	BAR CODE
4 X 3 X 6	WASHER 2 REQUIRED 7/16" FLAT 927116-100		WASHER 2 REQUIRED 1/2" FLAT 927118-100	
3 X 1 1/2 X 8				
3 X 2 X 8				
3 X 2 1/2 X 8				
4 X 3 X 8*				
5 X 4 X 8				
6 X 4 X 8*				
8 X 8 X 8*				
2 X 1 X 10*				
2 X 1.5 X 10*				
3 X 1 1/2 X 10*	CAPSCREW 2 REQUIRED 7/16-11NCX1 1/4" 911123-110		CAPSCREW 2 REQUIRED 1/2-13NCX1 1/4" 911125-110	
3 X 2 X 10*				
3 X 2 1/2 X 10*				
4 X 3 X 10*				
5 X 4 X 10				
6 X 4 X 10				
6 X 5 X 10				
8 X 6 X 10				
4 X 3 X 11 1/2				
5 X 4 X 11 1/2				
6 X 5 X 11 1/2				
8 X 6 X 11 1/2				
3 X 1 1/2 X 13				
3 X 2 X 13				
4 X 3 X 13				
6 X 4 X 13				
6 X 4 X 13H				
6 x 5 x 13				
6 x 5 x 13H				
8 X 6 X 13				

*** NOTES**

For Pumps 4 X 3 X 8, 6 X 4 X 8, 2 X 1 X 10 and 3 X 2 X 10 Frame 254-256T

use 2 Capscrews 7/16-11NC X 1" Part Number 911123-108, and 2 Washers 7/16 Flat Part Number 927116-100

For Pumps 4 X 3 X 8, 6 X 4 X 8, 2 X 1 X 10, 3 X 1 1/2 X 10, 3 X 2 X 10 and 4 X 3 X 10 Frame 324-326TS

use 2 capscrews 1/2-13NC X 2" Part Number 911125-116, and 2 Washers 1/2 Flat Part Number 927118-100

For Pumps 6 X 4 X 8, 3 X 2 X 10 and 4 X 3 X 10, Frame 364-365TS

use 2 capscrews 1/2-13NC X 2" Part Number 911125-116, and 2 Washers 1/2 Flat Part Number 927118-100

BAR CODES	
911123-108	
911125-116	
927116-100	
927118-100	

4030 PUMP PARTS

CENTERLINE DISCHARGE

"M" SIZE 1 1/4" IMPELLER BORE ----- 1 1/8" SHAFT DIAMETER AT COUPLER

1 5/8" MECHANICAL SEAL

ITEM 124 SUPPORT FOOT CAPSCREW AND WASHER				
PUMP SIZE	FRAME SIZE 213 - 286TS	BAR CODE	FRAME SIZE 324 - 404TS	BAR CODE
4 X 3 X 6	WASHER 2 REQUIRED 7/16" FLAT 927116-100		WASHER 2 REQUIRED 1/2" FLAT 927118-100	
3 X 1 1/2 X 8				
3 X 2 X 8				
3 X 2 1/2 X 8				
4 X 3 X 8				
5 X 4 X 8				
6 X 4 X 8*				
8 X 8 X 8				
2 X 1 X 10				
2 X 1.5 X 10				
3 X 1 1/2 X 10	CAPSCREW 2 REQUIRED 7/16-11NCX1" 911123-108		CAPSCREW 2 REQUIRED 1/2-13NCX1" 911125-108	
3 X 2 X 10*				
3 X 2 1/2 X 10*				
4 X 3 X 10*				
5 X 4 X 10				
6 X 4 X 10				
6 X 5 X 10				
8 X 6 X 10				
4 X 3 X 11 1/2				
5 X 4 X 11 1/2				
6 X 5 X 11 1/2				
8 X 6 X 11 1/2				
3 X 1 1/2 X 13				
3 X 2 X 13				
4 X 3 X 13				
6 X 4 X 13				
6 X 4 X 13H				
6 x 5 x 13				
6 x 5 x 13H				
8 X 6 X 13				

*** NOTES**

For Pumps 6 X 4 X 8, 3 X 2 X 10 and 4 X 3 X 10 Frame 364-365TS

use 2 capscrews 1/2-13NC X 1 1/2" Part Number 911125-112, and 2 Washers 1/2 Flat Part Number 927118-100

BAR CODES	
911125-112	
927118-100	brofrmsupMcapslwr-rev4

4030 PUMP PARTS

CENTERLINE DISCHARGE

"M" SIZE 1 1/4" IMPELLER BORE ----- 1 1/8" SHAFT DIAMETER AT COUPLER

1 5/8" MECHANICAL SEAL

ITEM 112 SUPPORT FOOT/BRG. FRAME, CAPSCREW AND WASHER		
PUMP SIZE	PART NUMBER	BAR CODE
4 X 3 X 6	WASHER 2 REQUIRED 1/2" FLAT 927117-100	
3 X 1 1/2 X 8		
3 X 2 X 8		
3 X 2 1/2 X 8		
4 X 3 X 8*		
5 X 4 X 8		
6 X 4 X 8*		
8 X 8 X 8		
2 X 1 X 10*		
2 X 1.5 X 10*		
3 X 1 1/2 X 10*		
3 X 2 X 10*		
3 X 2 1/2 X 10*		
4 X 3 X 10*		
5 X 4 X 10		
6 X 4 X 10		
6 X 5 X 10		
8 X 6 X 10	CAPSCREW 2 REQUIRED 1/2-13NC X 1" 911125-108	
4 X 3 X 11 1/2		
5 X 4 X 11 1/2		
6 X 5 X 11 1/2		
8 X 6 X 11 1/2		
3 X 1 1/2 X 13		
3 X 2 X 13		
4 X 3 X 13		
6 X 4 X 13		
6 X 4 X 13H		
6 x 5 x 13		
6 x 5 x 13H		
8 X 6 X 13		

4030 PUMP PARTS

CENTERLINE DISCHARGE

"M" SIZE 1 1/4" IMPELLER BORE ----- 1 1/8" SHAFT DIAMETER AT COUPLER

1 5/8" MECHANICAL SEAL

COUPLER SELECTION TABLE

(WOODS TYPE)

PUMP SHAFT SIZE	MOTOR FRAME SIZE	MOTOR SHAFT SIZE	COUPLER PART NUMBER	WOODS SIZE	BAR CODE
1 1/8"	213T - 215T	1 3/8"	827015 - 000	6J	
1 1/8"	254T - 286TS	1 5/8"	827016 - 000	7J	
1 1/8"	284T - 326TS	1 7/8"	827018 - 000	8S	
1 1/8"	324T - 326T	2 1/8"	827021 - 000	9S	
1 1/8"	364TS - 365TS	1 7/8"	827020 - 000	9S	
1 1/8"	364 - 365T	2 3/8"	827022 - 000	8S	
1 1/8"	404 - 405TS	2 1/8"	827023 - 000	8S	

COUPLER FLANGE PART NUMBERS

COUPLER PART NO.	MOTOR FRAME SIZE	FLANGE BORE	FLANGE PART NUMBER	WOODS SIZE	BAR CODE
827015 - 000	213T - 215T	1 3/8"	975000-836	6J	
		X			
		1 1/8"	975000-834	6J	
827016 - 000	254T - 286TS	1 5/8"	975000-842	7J	
		X			
		1 1/8"	975000-840	7J	
827018 - 000	284T - 326TS	1 7/8"	975000-847	8S	
		X			
		1 1/8"	975000-845	8S	

COUPLERS CONTINUED ON PAGE 36

4030 PUMP PARTS

CENTERLINE DISCHARGE

"M" SIZE 1 1/4" IMPELLER BORE ----- 1 1/8" SHAFT DIAMETER AT COUPLER

1 5/8" MECHANICAL SEAL

COUPLER FLANGE PART NUMBERS (cont'd)

COUPLER PART NO.	MOTOR FRAME SIZE	FLANGE BORE	FLANGE PART NUMBER	WOODS SIZE	BAR CODE
427021 - 000	324T - 326T	1 1/8"	975000-849	9S	
		X			
		2 1/8"	975000-852	9S	
427020 - 000	364TS - 365TS	1 7/8"	975000-851	9S	
		X			
		1 1/8"	975000-849	9S	
427022 - 000	364 - 365T	2 3/8"	975000-844	8S	
		X			
		1 1/8"	975000-845	8S	
427023 - 000	404 - 405TS	2 1/8"	975000-848	8S	
		X			
		1 1/8"	975000-845	8S	

COUPLER INSERT SELECTION TABLE

(WOODS TYPE)

COUPLER INSERT SIZE	MOTOR FRAME SIZE	INSERT NUMBER	PART NUMBER	BAR CODE
6J	213T - 215T	6JE	875000-803	
7J	254T - 286TS	7JE	875000-804	
8S	284T - 326TS	8JE	875000-805	
9S	324T - 326T	9E	875000-807	
9S	364TS - 365TS	9E	875000-807	
8S	364 - 365T	8H	875000-812	
8S	404 - 405TS	8H	875000-812	

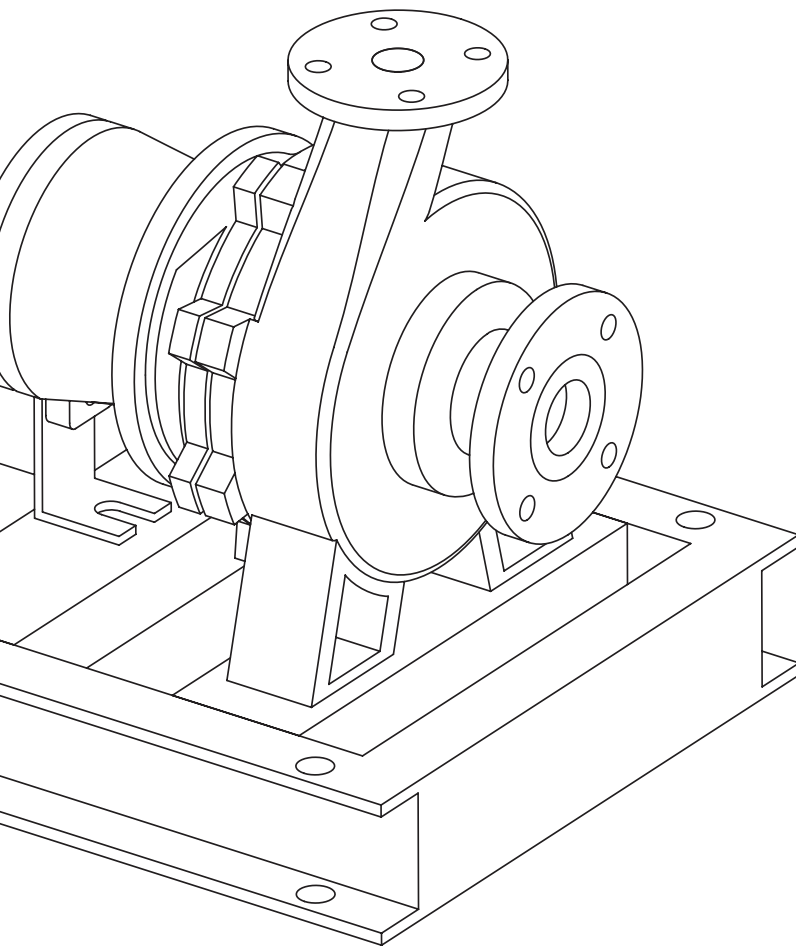
Series 4030 base mounted pumps

Centerline discharge
S designation

Parts list

Y" impeller bore
1 $\frac{1}{4}$ " mechanical seal

File No: 6040.120
Date: JULY 07, 2014
Supersedes: 6040.120
Date: JUNE 05, 2014



NEMA FRAME ASSIGNMENTS

Open & TEFC (TEFC frames in grey box where different than open)

NEMA FRAME PROGRAM HP	3600 RPM			1800 RPM			1200 RPM			900 RPM		
	T FRAMES 1964	U FRAMES 1952	ORIGINAL NEMA FRAMES	T FRAMES 1964	U FRAMES 1952	ORIGINAL NEMA FRAMES	T FRAMES 1964	U FRAMES 1952	ORIGINAL NEMA FRAMES	T FRAMES 1964	U FRAMES 1952	ORIGINAL NEMA FRAMES
1½	-	-	-	143T	182	203	145T	184	204	182T	213	225
2	143T	182	203	145T	184	204	184T	213	225	184T	213	254
3	145T	184	204	145T	184	224	182T	213	254	213T	215	254
5	182T	184	224	182T	213	225	184	215	284	215T	254U	284
7½	184T	213	225	184	215	254	213T	254U	284	215T	256U	324
10	213T	215	254	213T	254U	284	215T	256U	324	256T	284	326
15	215T	254U	284	215T	256U	324	254T	284T	326	284T	234T	364
20	254T	256U	324	256T	286U	364	256T	286U	364	286T	326U	365
25	256T	284U	364S	284T	324U	364	284T	324U	364	324T	364U	404
30	284TS	286U	365S	286T	326U	365	286T	326U	404	326T	365U	405
40	286TS	324S	364S	324T	364U	404	324T	364U	404	364T	404U	444
50	324TS	326S	365S	326T	364US	405S	326T	365US	405	365T	405U	445
60	326TS	364US	404S	326T	365US	405S	326T	365US	405	404T	444U	504U
75	364TS	405US	405S	364TS	404US	444S	364TS	405US	444S	405T	445U	505
100	365TS	444US	444S	365TS	405US	445S	365TS	405US	445S	444T	-	-
125	404TS	445US	445S	404TS	444US	504S	404TS	444US	504S	445T	-	-
150	405TS	445US	504S	405TS	445US	505S	405TS	445US	505S	-	-	-
200	444TS	-	-	444TS	-	-	444TS	-	-	-	-	-
250	445TS	-	-	445TS	-	-	445TS	-	-	-	-	-

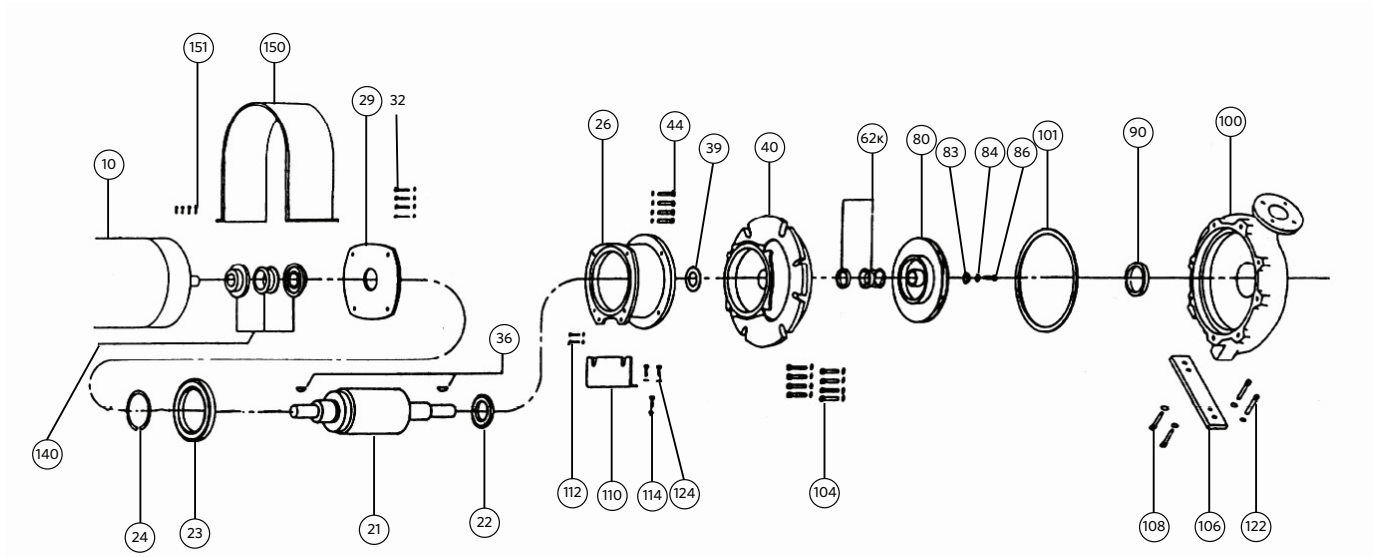
Series 4030

Centerline discharge, base mounted pump

S DESIGNATION

7/8" impeller bore - 1 1/4" mechanical seal

Exploded view - permanent grease lubrication



INDEX

ITEM	DESCRIPTION	PAGE
	Bearing frame assembly	18
20	Bearing housing	18
21	Shaft assembly	18
22	Ball bearing (inboard)	18
23	Ball bearing (outboard)	18
24	Snap ring	18
29	Bearing cover	18
32	Bearing cover capscrew	18
36	Impeller/coupler key	18
39	Water slinger	18
40	Adapter	13
44	Adapter capscrew	17
62k	Mechanical seal assembly	18

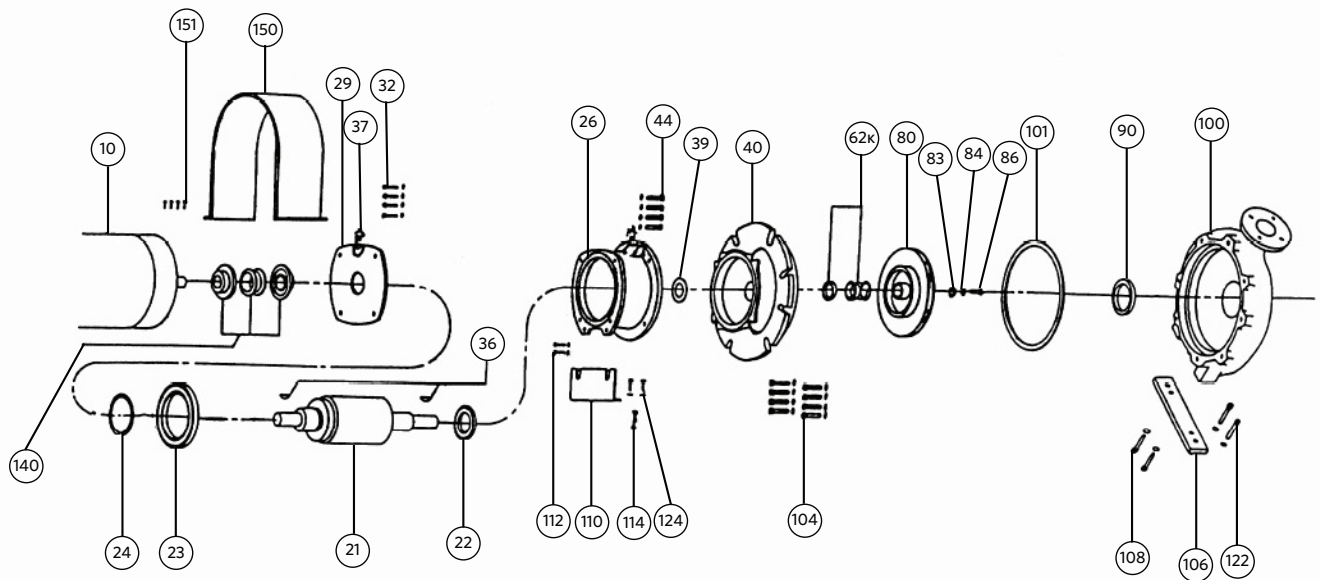
ITEM	DESCRIPTION	PAGE
80	Impeller	10
83	Impeller washer	18
86	Impeller capscrew	18
100	Casing	7
101	Casing gasket	16
104	Casing bolts	12
106	Casing support foot	24
108	Casing support foot capscrew	26
110	Bearing housing support foot	24
112	Support foot capscrew (upper)	25
122	Casing capscrew	27
124	Support foot capscrew (lower)	25
140	Coupler	28

Series 4030

Centerline discharge, base mounted pump

S DESIGNATION

7/8" impeller bore - 1 1/4" mechanical seal
Exploded view - regreaseable bearings



INDEX

ITEM	DESCRIPTION	PAGE
	Bearing frame assembly	20
20	Bearing housing	20
21	Shaft assembly	20
22	Ball bearing (inboard)	20
23	Ball bearing (outboard)	20
24	Snap ring	20
29	Bearing cover	20
32	Bearing cover capscrew	20
36	Impeller/coupler key	20
37	Grease fitting	20
39	Water slinger	20
40	Adapter	13
44	Adapter capscrew	17

ITEM	DESCRIPTION	PAGE
62K	Mechanical seal assembly	20
80	Impeller	10
83	Impeller washer	20
86	Impeller capscrew	20
100	Casing	7
101	Casing gasket	16
104	Casing bolts	12
106	Casing support foot	24
108	Casing support foot capscrew	26
110	Bearing housing support foot	24
112	Support foot capscrew (upper)	25
122	Casing capscrew	27
124	Support foot capscrew (lower)	25
140	Coupler	28

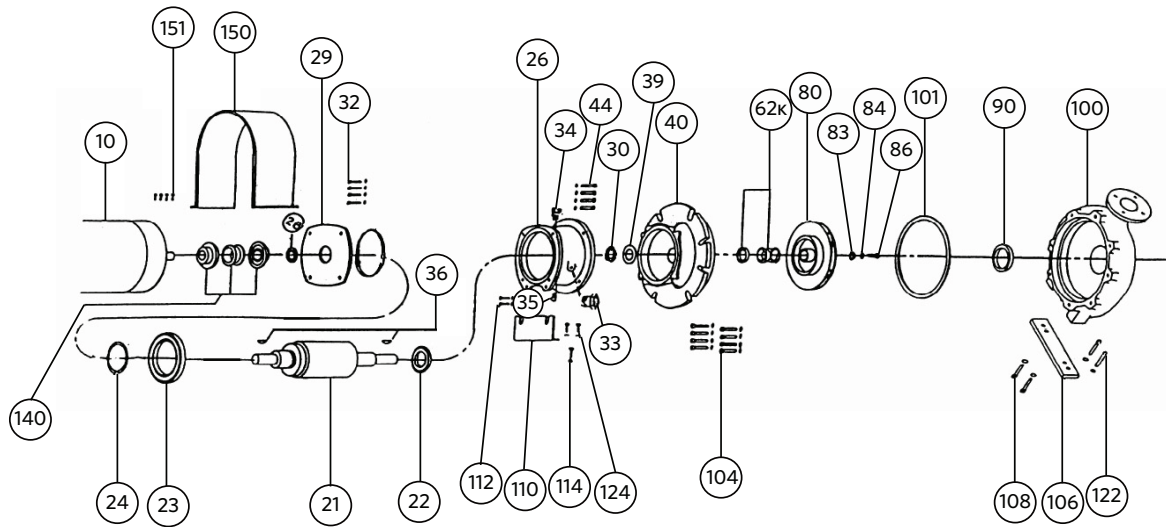
Series 4030

Centerline discharge, base mounted pump

S DESIGNATION

7/8" impeller bore - 1 1/4" mechanical seal

Exploded view - oil lubrication



INDEX

ITEM	DESCRIPTION	PAGE
	Bearing frame assembly	22
20	Bearing housing	22
21	Shaft assembly	22
22	Ball bearing (inboard)	22
23	Ball bearing (outboard)	22
24	Snap ring	22
28	Oil seal (outboard)	22
29	Bearing cover	22
30	Oil seal (inboard)	22
31	O - ring	22
32	Bearing cover capscrew	22
33	Oil view gauge	22
34	Vent gauge	22
35	Pipe plug	22
36	Impeller/coupler key	22
39	Water slinger	22

ITEM	DESCRIPTION	PAGE
40	Adapter	13
44	Adapter capscrew	17
62K	Mechanical seal assembly	22
80	Impeller	10
83	Impeller washer	22
86	Impeller capscrew	22
100	Casing	7
101	Casing gasket	16
104	Casing bolts	12
106	Casing support foot	24
108	Casing support foot capscrew	26
110	Bearing housing support foot	24
112	Support foot capscrew (upper)	25
122	Casing capscrew	27
124	Support foot capscrew (lower)	25
140	Coupler	28

ITEM 100: CASING

PUMP SIZE	PRESSURE RATING (LB)	CONSTRUCTION	PART NUMBER	BAR CODE
1.5 × 1 × 6	125	Cast iron	426101-011	
	250	Ductile iron	426102-031	
	125	All bronze	426101-041	
3 × 1.5 × 6	125	Cast iron	426597-011	
	250	Ductile iron	426598-031	
	125	All bronze	426597-041	
3 × 2 × 6	125	Cast iron	426109-011	
	250	Ductile iron	426110-031	
	125	All bronze	426109-041	
3 × 2.5 × 6	125	Cast iron	427107-011	
	250	Ductile iron	427108-031	
	125	All bronze	427107-041	
4 × 3 × 6	125	Cast iron	427292-011	
	250	Ductile iron	427292-031	
	125	All bronze	427292-041	
6 × 6 × 6	125	Cast iron	427907-041	
	250	Ductile iron	427908-031	
	125	All bronze	427907-041	
1.5 × 1 × 8	125	Cast iron	426188-011	
	250	Ductile iron	426189-031	
	125	All bronze	426188-041	
3 × 1.5 × 8	125	Cast iron	426599-011	
	250	Ductile iron	426600-031	
	125	All bronze	426599-041	
3 × 2 × 8	125	Cast iron	426125-011	
	250	Ductile iron	426126-031	
	125	All bronze	426125-041	

ITEM 100: CASING (continued)

PUMP SIZE	PRESSURE RATING (LB)	CONSTRUCTION	PART NUMBER	BAR CODE
3 × 2.5 × 8	125	Cast iron	427236-011	
	250	Ductile iron	427237-031	
	125	All bronze	427236-041	
4 × 3 × 8	125	Cast iron	426129-011	
	250	Ductile iron	426130-031	
	125	All bronze	426129-041	
5 × 4 × 8	125	Cast iron	426107-011	
	250	Ductile iron	426108-031	
	125	All bronze	426107-041	
6 × 4 × 8w	125	Cast iron	426624-011	
	250	Ductile iron	426625-031	
	125	All bronze	426624-041	
8 × 8 × 8	125	Cast iron	427913-011	
	250	Ductile iron	427913-031	
	125	All bronze	427913-041	
2 × 1 × 10	125	Cast iron	426137-011	
	250	Ductile iron	426138-031	
	125	All bronze	426137-041	
2 × 1.5 × 10	125	Cast iron	426259-011	
	250	Ductile iron	426260-031	
	125	All bronze	426259-041	
3 × 1.5 × 10	125	Cast iron	426139-011	
	250	Ductile iron	426140-031	
	125	All bronze	426139-041	

ITEM 100: CASING (continued)

PUMP SIZE	PRESSURE RATING (LB)	CONSTRUCTION	PART NUMBER	BAR CODE
3 × 2 × 10	125	Cast iron	426143-011	
	250	Ductile iron	426144-031	
	125	All bronze	426143-041	
3 × 2.5 × 10	125	Cast iron	427290-011	
	250	Ductile iron	427291-031	
	125	All bronze	427290-041	
4 × 3 × 10	125	Cast iron	426149-011	
	250	Ductile iron	426150-031	
	125	All bronze	426149-041	
5 × 4 × 10	125	Cast iron	426111-011	
	250	Ductile iron	426112-031	
	125	All bronze	426111-041	
6 × 4 × 10	125	Cast iron	426153-011	
	250	Ductile iron	426154-011	
	125	All bronze	426153-041	
6 × 5 × 10	125	Cast iron	427238-011	
	250	Ductile iron	427239-041	
	125	All bronze	427238-041	
4 × 3 × 11.5	125	Cast iron	426147-011	
	250	Ductile iron	426148-031	
	125	All bronze	426147-041	
5 × 4 × 11.5	125	Cast iron	426151-011	
	250	Ductile iron	426152-031	
	125	All bronze	426152-041	

ITEM 80: IMPELLER*

PUMP SIZE	CONSTRUCTION**	PART NUMBER	BAR CODE
1.5 × 1 × 6	Bronze fitted & all bronze	427101-041	
	Ductile iron & all iron	427101-011	
3 × 1.5 × 6	Bronze fitted & all bronze	427109-041	
	Ductile iron & all iron	427109-011	
3 × 2 × 6	Bronze fitted & all bronze	427111-041	
	Ductile iron & all iron	427111-011	
3 × 2.5 × 6	Bronze fitted & all bronze	427103-041	
	Ductile iron & all iron	427103-011	
4 × 3 × 6	Bronze fitted & all bronze	427117-041	
	Ductile iron & all iron	427117-011	
6 × 6 × 6	Bronze fitted & all bronze	427909-041	
	Ductile iron & all iron	427909-011	
1.5 × 1 × 8	Bronze fitted & all bronze	426228-041	
	Ductile iron & all iron	426228-011	
3 × 1.5 × 8	Bronze fitted & all bronze	427121-041	
	Ductile iron & all iron	427121-011	
3 × 2 × 8	Bronze fitted & all bronze	427125-041	
	Ductile iron & all iron	427125-011	
3 × 2.5 × 8	Bronze fitted & all bronze	427127-041	
	Ductile iron & all iron	427127-011	
4 × 3 × 8	Bronze fitted & all bronze	427129-041	
	Ductile iron & all iron	427129-011	
5 × 4 × 8	Bronze fitted & all bronze	427137-041	
	Ductile iron & all iron	427137-011	
6 × 4 × 8w	Bronze fitted & all bronze	427137-041	
	Ductile iron & all iron	427137-011	
8 × 8 × 8	Bronze fitted & all bronze	427917-041	
	Ductile iron & all iron	427917-041	

ITEM 80: IMPELLER* (continued)

PUMP SIZE	CONSTRUCTION**	PART NUMBER	BAR CODE
2 × 1 × 10	Bronze fitted & all bronze	427151-041	
	Ductile iron & all iron	427151-011	
2 × 1.5 × 10	Bronze fitted & all bronze	426255-041	
	Ductile iron & all iron	426255-011	
3 × 1.5 × 10	Bronze fitted & all bronze	427151-041	
	Ductile iron & all iron	427151-011	
3 × 2 × 10	Bronze fitted & all bronze	427163-041	
	Ductile iron & all iron	427163-011	
3 × 2.5 × 10	Bronze fitted & all bronze	427123-041	
	Ductile iron & all iron	427123-011	
4 × 3 × 10	Bronze fitted & all bronze	427149-041	
	Ductile iron & all iron	427149-011	
5 × 4 × 10	Bronze fitted & all bronze	427153-041	
	Ductile iron & all iron	427153-011	
6 × 4 × 10	Bronze fitted & all bronze	427153-041	
	Ductile iron & all iron	427153-011	
6 × 5 × 10	Bronze fitted & all bronze	427159-041	
	Ductile iron & all iron	427159-011	
4 × 3 × 11.5	Bronze fitted & all bronze	426281-041	
	Ductile iron & all iron	426281-011	
5 × 4 × 11.5	Bronze fitted & all bronze	426283-041	
	Ductile iron & all iron	426283-011	

NOTE:

*Impeller part numbers are for unbalanced, full diameter impellers. Always specify the Pump serial number. If possible, measure the diameter of the impeller being replaced.

**All Bronze construction: Parts in contact with the pumped liquid are bronze, copper or stainless steel.

Bronze Fitted construction: Parts in contact with the pumped liquid are bronze or copper, except casing and adapter.

All Iron construction: Parts in contact with the pumped liquid are cast iron or steel, except shaft sleeve & mechanical seal.

ITEM 104: CASING CAPSCREW & WASHER

PUMP SIZE	AMOUNT REQUIRED	SIZE	PART NUMBER	BAR CODE
1.5 × 1 × 6 3 × 1.5 × 6 3 × 2 × 6	8	CAPSCREW ½" - 13NC × 1¼" LG.	911125-110	
3 × 2.5 × 6 4 × 3 × 6 6 × 6 × 6	8	WASHER ½" - SAE FLAT	927117-100	
1.5 × 1 × 8	8	HX. HD. CAPSCREW ⅝" - 11NC × 1½" LG.	911129-112	
3 × 1.5 × 8	8	WASHER ⅝" - SAE FLAT	927121-100	
3 × 2 × 8 3 × 2.5 × 8 4 × 3 × 8	8	HX. HD. CAPSCREW ⅝" - 11NC × 1½" LG.	911129-112	
5 × 4 × 8 6 × 4 × 8 8 × 8 × 8	8	WASHER ⅝" - SAE FLAT	927121-100	
2 × 1 × 10 2 × 1.5 × 10 3 × 1.5 × 10 3 × 2 × 10 3 × 2.5 × 10	12	HX. HD. CAPSCREW ⅝" - 11NC × 1½" LG.	911129-112	
4 × 3 × 10 5 × 4 × 10 6 × 4 × 10 6 × 5 × 10	12	WASHER ⅝" - SAE FLAT	927121-100	
4 × 3 × 11.5	16	HX. HD. CAPSCREW ⅝" - 11NC × 1½" LG.	911125-112	
5 × 4 × 11.5	16	WASHER ½" - SAE FLAT	927117-100	

ITEM 40: ADAPTER

125 LB - bronze fitted and all iron construction

PUMP SIZE	FRAME 56 143 - 184T	FRAMES 213 - 215T	FRAMES 254 - 256T	BAR CODE
1.5 × 1 × 6	426746-011	426746-011		
3 × 1.5 × 6	426746-011	426746-011		
3 × 2 × 6	426746-011	426746-011		
3 × 2.5 × 6	426746-011	426746-011		
4 × 3 × 6	426746-011	426746-011		
6 × 6 × 6	426746-011	426746-011		
1.5 × 1 × 8	426749-011	426749-011		
3 × 1.5 × 8	426749-011	426749-011	426749-011	
3 × 2 × 8	426749-011	426749-011	426749-011	
3 × 2.5 × 8	426749-011	426749-011	426749-011	
4 × 3 × 8	426749-011	426749-011		
5 × 4 × 8	426749-011	426749-011		
6 × 4 × 8w	426749-011	426749-011		
8 × 8 × 8	426749-011			
2 × 1 × 10	426753-011	426753-011		
2 × 1.5 × 10	426753-011	426753-011		
3 × 1.5 × 10	426753-011	426753-011		
3 × 2 × 10	426753-011	426753-011		
3 × 2.5 × 10	426753-011	426753-011		
4 × 3 × 10	426753-011	426753-011	426753-011	
5 × 4 × 10	426753-011	426753-011	426753-011	
6 × 4 × 10	426753-011	426753-011	426753-011	
6 × 5 × 10	426753-011	426753-011	426753-011	
4 × 3 × 11.5		426741-011	426741-011	
5 × 4 × 11.5		426741-011	426741-011	

ITEM 40: ADAPTER (continued)

125 LB - all bronze construction

PUMP SIZE	FRAME 56 143 - 184T	FRAMES 213 - 215T	FRAMES 254 - 256T	BAR CODE
1.5 × 1 × 6	426746-041	426746-041		
3 × 1.5 × 6	426746-041	426746-041		
3 × 2 × 6	426746-041	426746-041		
3 × 2.5 × 6	426746-041	426746-041		
4 × 3 × 6	426746-041	426746-041		
6 × 6 × 6	426746-041	426746-041		
1.5 × 1 × 8	426749-041	426749-041		
3 × 1.5 × 8	426749-041	426749-041	426749-041	
3 × 2 × 8	426749-041	426749-041	426749-041	
3 × 2.5 × 8	426749-041	426749-041	426749-041	
4 × 3 × 8	426749-041	426749-041		
5 × 4 × 8	426749-041	426749-041		
6 × 4 × 8w	426749-041	426749-041		
8 × 8 × 8	426749-041			
2 × 1 × 10	426753-041	426753-041		
2 × 1.5 × 10	426753-041	426753-041		
3 × 1.5 × 10	426753-041	426753-041		
3 × 2 × 10	426753-041	426753-041		
3 × 2.5 × 10	426753-041	426753-041		
4 × 3 × 10	426753-041	426753-041	426753-041	
5 × 4 × 10	426753-041	426753-041	426753-041	
6 × 4 × 10	426753-041	426753-041	426753-041	
6 × 5 × 10	426753-041	426753-041	426753-041	
4 × 3 × 11.5		426741-041	426741-041	
5 × 4 × 11.5		426741-041	426741-041	

ITEM 40: ADAPTER (continued)

150 LB - ductile iron construction

PUMP SIZE	FRAME 56 143 - 184T	FRAMES 213 - 215T	FRAMES 254 - 256T	BAR CODE
1.5 × 1 × 6	426746-031	426746-031		
3 × 1.5 × 6	426746-031	426746-031		
3 × 2 × 6	426746-031	426746-031		
3 × 2.5 × 6	426746-031	426746-031		
4 × 3 × 6	426746-031	426746-031		
6 × 6 × 6	426746-031	426746-031		
1.5 × 1 × 8	426749-031	426749-031		
3 × 1.5 × 8	426749-031	426749-031	426749-031	
3 × 2 × 8	426749-031	426749-031	426749-031	
3 × 2.5 × 8	426749-031	426749-031	426749-031	
4 × 3 × 8	426749-031	426749-031		
5 × 4 × 8	426749-031	426749-031		
6 × 4 × 8w	426749-031	426749-031		
8 × 8 × 8	426749-031			
2 × 1 × 10	426753-031	426753-031		
2 × 1.5 × 10	426753-031	426753-031		
3 × 1.5 × 10	426753-031	426753-031		
3 × 2 × 10	426753-031	426753-031		
3 × 2.5 × 10	426753-031	426753-031		
4 × 3 × 10	426753-031	426753-031	426753-031	
5 × 4 × 10	426753-031	426753-031	426753-031	
6 × 4 × 10	426753-031	426753-031	426753-031	
6 × 5 × 10	426753-031	426753-031	426753-031	
4 × 3 × 11.5		426741-031	426741-031	
5 × 4 × 11.5		426741-031	426741-031	

ITEM 101: CASING GASKET

PUMP SIZE	DIMENSIONS O.D × I.D. × THICKNESS	PART NUMBER	BAR CODE
1.5 × 1 × 6 3 × 1.5 × 6 3 × 2 × 6 3 × 2.5 × 6 4 × 3 × 6 6 × 6 × 6	7 ¹ / ₁₆ " × 8 ¹ / ₄ " × ¹ / ₁₆ "	426401-002	
1.5 × 1 × 8 3 × 1.5 × 8 3 × 2 × 8 3 × 2.5 × 8 4 × 3 × 8 5 × 4 × 8 6 × 4 × 8w 8 × 8 × 8	9" × 8 ¹ / ₄ " × ¹ / ₁₆ "	426401-003	
2 × 1 × 10 2 × 1.5 × 10 3 × 1.5 × 10 3 × 2 × 10 3 × 2.5 × 10 4 × 3 × 10 5 × 4 × 10 6 × 4 × 10 6 × 5 × 10	10 ⁵ / ₁₆ " × 10 ³ / ₁₆ " × ¹ / ₁₆ "	426401-004	
4 × 3 × 11.5 5 × 4 × 11.5	12 ⁷ / ₁₆ " × 11 ⁹ / ₁₆ " × ¹ / ₁₆ "	426401-006	

ITEM 44: BEARING HOUSING CAPSCREW, WASHER & NUT

PUMP SIZE	AMOUNT REQUIRED	SIZE	PART NUMBER	BAR CODE
1.5 × 1 × 6 3 × 1.5 × 6 3 × 2 × 6 3 × 2.5 × 6 4 × 3 × 6 6 × 6 × 6	4	CAPSCREW 3/8" - 16NC × 1 1/2" LG.	911121-112	
1.5 × 1 × 8 3 × 1.5 × 8 3 × 2 × 8 3 × 2.5 × 8 4 × 3 × 8	4	CAPSCREW 3/8" - 16NC × 1 1/2" LG.	911121-112	
5 × 4 × 8 6 × 4 × 8w 8 × 8 × 8	4	WASHER 3/8" - FLAT	927114-100	
2 × 1 × 10 2 × 1.5 × 10 3 × 1.5 × 10 3 × 2 × 10 3 × 2.5 × 10	4	WASHER 3/8" - FLAT	927114-100	
4 × 3 × 10 5 × 4 × 10 6 × 4 × 10 6 × 5 × 10	4	NUT 3/8" - NC HEX. STD.	913121-100	
4 × 3 × 11.5 5 × 4 × 11.5	4	NUT 3/8" - NC HEX. STD.	913121-100	

PERMANENT GREASE LUBRICATION - STANDARD SHAFT**BEARING FRAME ASSEMBLY**

ITEM NUMBER	DESCRIPTION	PART NUMBER	BAR CODE
	Bearing frame assembly ①	826768-000	
20	Bearing housing	426764-011	
21	Shaft & sleeve assembly	426760-001	
22	Inboard bearing	971101-364	
23	Outboard bearing	971101-684	
24	Snap ring	923109-008	
29	Bearing cap	426766-011	
32	Bearing capscrews 3/8-16 × 1 LG (4 REQ'D)	911121-108	
36	Impeller key	428160-708	
36	Coupler key	428160-712	
39	Water slinger	406622-000	

NOTE :

① Items 20 to 39 inclusive are included in the bearing frame assembly.

COMMON PARTS

ITEM NUMBER	DESCRIPTION	PART NUMBER BF, AB & AI	BAR CODE
62κ	Mechanical seal assembly	975000-982**	
83	Impeller washer	425742-001	
86	S/S impeller capscrew	911900-114	

** For liquids above 200°F/93°C use 9975001-813 (-613 if potable drinking water above 200°F/93°C)
For glycols above 30% by weight use 9975001-817 (-818 if above 200°F/93°C)

PERMANENT GREASE LUBRICATION - STAINLESS STEEL SHAFT

BEARING FRAME ASSEMBLY

ITEM NUMBER	DESCRIPTION	PART NUMBER	BAR CODE
	Bearing frame assembly ①	426768-071	
20	Bearing housing	426764-011	
21	Shaft & sleeve assembly	426760-071	
22	Inboard bearing	971101-364	
23	Outboard bearing	971101-684	
24	Snap ring	923109-008	
29	Bearing cap	426766-011	
32	BEARING CAPSCREWS 3/8-16 × 1 LG (4 REQ'D)	911121-108	
36	Impeller key	428160-708	
36	Coupler key	428160-712	
39	Water slinger	406622-000	

NOTE :

① Items 20 to 39 inclusive are included in the bearing frame assembly.

COMMON PARTS

ITEM NUMBER	DESCRIPTION	PART NUMBER BF, AB & AI	BAR CODE
62κ	Mechanical seal assembly	975000-982**	
83	Impeller washer	425742-001	
86	S/S impeller capscrew	911900-119	

** For liquids above 200°F/93°C use 9975001-813 (-613 if potable drinking water above 200°F/93°C)
For glycols above 30% by weight use 9975001-817 (-818 if above 200°F/93°C)

REGREASEABLE BEARINGS - STANDARD SHAFT**BEARING FRAME ASSEMBLY**

ITEM NUMBER	DESCRIPTION	PART NUMBER	BAR CODE
	Bearing frame assembly ^①	426769-000	
20	Bearing housing	426764-012	
21	Shaft & sleeve assembly	426760-001	
22	Inboard bearing	971101-363	
23	Outboard bearing	971101-683	
24	Snap ring	923109-008	
29	Bearing cap	426766-012	
32	Bearing capscrews 3/8-16 × 1 LG (4 REQ'D)	911121-108	
36	Impeller key	428160-708	
36	Coupler key	428160-712	
37	Grease fitting	425030-011	
39	Water slinger	406622-000	

NOTE :

① Items 20 to 39 inclusive are included in the bearing frame assembly.

COMMON PARTS

ITEM NUMBER	DESCRIPTION	PART NUMBER BF, AB & AI	BAR CODE
62K	mechanical seal assembly	975000-982**	
83	impeller washer	425742-001	
86	S/S impeller capscrew	911900-119	

** For liquids above 200°F/93°C use 9975001-813 (-613 if potable drinking water above 200°F/93°C)
For glycols above 30% by weight use 9975001-817 (-818 if above 200°F/93°C)

REGREASEABLE BEARINGS - STAINLESS STEEL SHAFT

BEARING FRAME ASSEMBLY

ITEM NUMBER	DESCRIPTION	PART NUMBER	BAR CODE
	Bearing frame assembly ^①	426769-071	
20	Bearing housing	426764-012	
21	Shaft & sleeve assembly	426760-071	
22	Inboard bearing	971101-363	
23	Outboard bearing	971101-683	
24	Snap ring	923109-008	
29	Bearing cap	426766-012	
32	Bearing capscrews 3/8-16 × 1 LG (4 REQ'D)	911121-108	
36	Impeller key	428160-708	
36	Coupler key	428160-712	
37	Grease fitting (2 REQ'D)	425030-011	
39	Water slinger	406622-000	

NOTE :

① Items 20 to 39 inclusive are included in the bearing frame assembly.

COMMON PARTS

ITEM NUMBER	DESCRIPTION	PART NUMBER BF, AB & AI	BAR CODE
62K	Mechanical seal assembly	975000-982**	
83	Impeller washer	425742-001	
86	S/S impeller capscrew	911900-119	

** For liquids above 200°F/93°C use 9975001-813 (-613 if potable drinking water above 200°F/93°C)
For glycols above 30% by weight use 9975001-817 (-818 if above 200°F/93°C)

OIL LUBRICATION - STANDARD SHAFT**BEARING FRAME ASSEMBLY**

ITEM NUMBER	DESCRIPTION	PART NUMBER	BAR CODE
	Bearing frame assembly ①	426770-000	
20	Bearing housing	426764-013	
21	Shaft & sleeve assembly	426760-001	
22	Inboard bearing	971101-915	
23	Outboard bearing	971101-916	
24	Snap ring	923109-008	
28	Oil seal	965001-065	
29	Bearing cap	426766-013	
31	O-ring	961131-152	
32	Bearing capscrews 3/8-16 × 1 LG (4 REQ'D)	911121-108	
33	Oil view gauge	116904-000	
34	Air vent	407444-000	
35	Pipe plug	937105-200	
36	Impeller key	428160-708	
36	Coupler key	428160-712	
39	Water slinger	406622-000	

NOTE :

① Items 20 to 39 inclusive are included in the bearing frame assembly.

COMMON PARTS

ITEM NUMBER	DESCRIPTION	PART NUMBER BF, AB & AI	BAR CODE
62κ	Mechanical seal assembly	975000-982**	
83	Impeller washer	425742-001	
86	S/S impeller capscrew	911900-119	

** For liquids above 200°F/93°C use 9975001-813 (-613 if potable drinking water above 200°F/93°C)
For glycols above 30% by weight use 9975001-817 (-818 if above 200°F/93°C)

OIL LUBRICATION - STAINLESS STEEL SHAFT

BEARING FRAME ASSEMBLY

ITEM NUMBER	DESCRIPTION	PART NUMBER	BAR CODE
	Bearing frame assembly ①	426770-071	
20	Bearing housing	426764-013	
21	Shaft & sleeve assembly	426760-071	
22	Inboard bearing	971101-915	
23	Outboard bearing	971101-916	
24	Snap ring	923109-008	
28	Oil seal	965001-065	
29	Bearing cap	426766-013	
31	O-ring	961131-152	
32	Bearing capscrews 3/8-16 x 1 LG (4 REQ'D)	911121-108	
33	Oil view gauge	116904-000	
34	Air vent	407444-000	
35	Pipe plug	937105-200	
36	Impeller key	428160-708	
36	Coupler key	428160-712	
39	Water slinger	406622-000	

NOTE :

① Items 20 to 39 inclusive are included in the bearing frame assembly.

COMMON PARTS

ITEM NUMBER	DESCRIPTION	PART NUMBER BF, AB & AI	BAR CODE
62K	Mechanical seal assembly	975000-982**	
83	Impeller washer	425742-001	
86	S/S impeller capscrew	911900-119	

** For liquids above 200°F/93°C use 9975001-813 (-613 if potable drinking water above 200°F/93°C)
For glycols above 30% by weight use 9975001-817 (-818 if above 200°F/93°C)

ITEM 110: BEARING HOUSING SUPPORT FOOT

PUMP SIZE	PART NUMBER	BAR CODE
1.5 × 1 × 6	426999-001	
3 × 1.5 × 6	426999-001	
3 × 2 × 6	426999-002	
3 × 2.5 × 6	426999-002	
4 × 3 × 6	426999-002	
6 × 6 × 6	426999-002	
1.5 × 1 × 8	426999-001	
3 × 1.5 × 8	426999-002	
3 × 2 × 8	426999-003	
3 × 2.5 × 8	426999-003	
4 × 3 × 8	426999-003	
5 × 4 × 8	426999-004	
8 × 8 × 8	426999-006	
6 × 4 × 8w	426999-004	
2 × 1 × 10	426999-003	
2 × 1.5 × 10	426999-003	
3 × 1.5 × 10	426999-004	
3 × 2 × 10	426999-004	
3 × 2.5 × 10	426999-004	
4 × 3 × 10	426999-004	
5 × 4 × 10	426999-005	
6 × 4 × 10	426999-005	
6 × 5 × 10	426999-005	
4 × 3 × 11.5	426999-004	
5 × 4 × 11.5	426999-005	

ITEM 106: CASING SUPPORT FOOT

PUMP SIZE	PART NUMBER	BAR CODE
1.5 × 1 × 6	426551-000	
3 × 1.5 × 6	426552-000	
3 × 2 × 6	426554-000	
3 × 2.5 × 6	426554-000	
4 × 3 × 6	Not required	
6 × 6 × 6	426554-000	
1.5 × 1 × 8	426670-004	
3 × 1.5 × 8	426554-000	
3 × 2 × 8	426554-000	
3 × 2.5 × 8	426554-000	
4 × 3 × 8	426554-000	
5 × 4 × 8	426554-000	
6 × 4 × 8w	426554-000	
8 × 8 × 8	Not required	
2 × 1 × 10	426554-000	
2 × 1.5 × 10	426554-000	
3 × 1.5 × 10	Not required	
3 × 2 × 10	Not required	
3 × 2.5 × 10	Not required	
4 × 3 × 10	Not required	
5 × 4 × 10	Not required	
6 × 4 × 10	Not required	
6 × 5 × 10	Not required	
4 × 3 × 11.5	Not required	
5 × 4 × 11.5	Not required	

ITEM 112: BEARING SUPPORT FOOT CAPSCREW (UPPER)

PUMP SIZE	AMOUNT REQUIRED	SIZE	PART NUMBER	BAR CODE
ALL SIZES	1	½" - 13NC × 1" LG	911125-108	

ITEM 112: BEARING SUPPORT FOOT CAPSCREW WASHER (UPPER)

PUMP SIZE	AMOUNT REQUIRED	SIZE	PART NUMBER	BAR CODE
ALL SIZES	1	½" FLAT	927117-100	

ITEM 124: BEARING SUPPORT FOOT CAPSCREW (LOWER)

PUMP SIZE	AMOUNT REQUIRED	SIZE	PART NUMBER	BAR CODE
ALL SIZES	1	7/16" - 14NC × 1" LG	911123-216	

ITEM 124: BEARING SUPPORT FOOT CAPSCREW WASHER (LOWER)

PUMP SIZE	AMOUNT REQUIRED	SIZE	PART NUMBER	BAR CODE
ALL SIZES	1	7/16" FLAT	927116-100	

ITEM 108: CASING SUPPORT FOOT CAPSCREW (TO CASING)

PUMP SIZE	AMOUNT REQUIRED	SIZE	PART NUMBER	BAR CODE
1.5 × 1 × 6 3 × 1.5 × 6	1	5/16" - 16NC × 1" LG	911119-108	
3 × 2 × 6 3 × 2.5 × 6 4 × 3 × 6 6 × 6 × 6	2	1/2" - 13NC × 1" LG	911125-108	
1.5 × 1 × 8 3 × 1.5 × 8 3 × 2 × 8 3 × 2.5 × 8 4 × 3 × 8 5 × 4 × 8 6 × 4 × 8w 8 × 8 × 8	2	1/2" - 13NC × 1" LG	911125-108	
2 × 1 × 10 2 × 1.5 × 10 3 × 1.5 × 10 3 × 2 × 10	2	1/2" - 13NC × 1" LG	911125-108	
3 × 2.5 × 10 4 × 3 × 10 5 × 4 × 10 6 × 4 × 10 6 × 5 × 10		Not required		
4 × 3 × 11.5 5 × 4 × 11.5		Not required		

ITEM 122: CASING SUPPORT FOOT CAPSCREW & WASHER (1)

PUMP SIZE	AMOUNT REQUIRED	SIZE	PART NUMBER	BAR CODE
1.5 × 1 × 6 3 × 1.5 × 6 3 × 2 × 6 3 × 2.5 × 6 4 × 3 × 6 6 × 6 × 6	2	7/16" - 11NC × 1 1/4" LG	911123-216	
*1.5 × 1 × 8 3 × 1.5 × 8 3 × 2 × 8 3 × 2.5 × 8 4 × 3 × 8 5 × 4 × 8 6 × 4 × 8w 8 × 8 × 8	2	7/16" - 11NC × 1 1/4" LG	911123-216	
2 × 1 × 10 2 × 1.5 × 10 3 × 1.5 × 10	2	7/16" - 11NC × 1 1/4" LG	911123-216	
3 × 2 × 10 3 × 2.5 × 10 4 × 3 × 10 5 × 4 × 10 6 × 4 × 10 6 × 5 × 10	2	WASHER 7/16" FLAT	927116-100	
4 × 3 × 11.5 5 × 4 × 11.5	2	WASHER 7/16" FLAT	927116-100	

NOTE:

*For pumps 1 1/2 x 1 x 8, frames 56T, 143-145T & 182 - 184T, use 2 capscrews (7/16" - 11 NC x 2" LG.) - part number: 911123-116 and 2 washers (7/16" Flat) part number: 927116-100

COUPLER SELECTION TABLE (WOODS TYPE)

PUMP SHAFT SIZE	MOTOR FRAME SIZE	MOTOR SHAFT SIZE	COUPLER PART NUMBER	WOODS SIZE	BAR CODE
7/8"	56	5/8"	827010-000	4J	
7/8"	143T - 145T	7/8"	827011-000	4J	
7/8"	182T - 184T	1 1/8"	827012-000	5J	
7/8"	213T - 215T	1 3/8"	827013-000	6J	
7/8"	254T - 256T	1 5/8"	827014-000	7J	

COUPLER FLANGE PART NUMBERS

COUPLER PART NUMBER	MOTOR FRAME SIZE	FLANGE BORE	FLANGE PART NUMBER	WOODS SIZE	BAR CODE
827010-000	56	5/8"	975000-822	4J	
		7/8"	975000-823	4J	
827011-000	143T - 145T	7/8"	975000-823	4J	
		7/8"	975000-823	4J	
827012-000	182T - 184T	1 1/8"	975000-829	5J	
		7/8"	975000-827	5J	
827013-000	213T - 215T	1 3/8"	975000-836	6J	
		7/8"	975000-832	6J	
827014-000	254T - 256T	1 5/8"	975000-842	7J	
		7/8"	975000-838	7J	

COUPLER INSERT SELECTION TABLE (WOODS TYPE)

COUPLER INSERT SIZE	INSERT NUMBER	PART NUMBER	BAR CODE
4J	4JE	875000-801	
5J	5JE	875000-802	
6J	6JE	875000-803	
7J	7JE	875000-804	

TORONTO

23 BERTRAND AVENUE
TORONTO, ONTARIO
CANADA
M1L 2P3
+1 416 755 2291

BUFFALO

93 EAST AVENUE
NORTH TONAWANDA, NEW YORK
U.S.A.
14120-6594
+1 716 693 8813

BIRMINGHAM

HEYWOOD WHARF, MUCKLOW HILL
HALESOWEN, WEST MIDLANDS
UNITED KINGDOM
B62 8DJ
+44 (0) 8444 145 145

MANCHESTER

WOLVERTON STREET
MANCHESTER
UNITED KINGDOM
M11 2ET
+44 (0) 8444 145 145

BANGALORE

#59, FIRST FLOOR, 3RD MAIN
MARGOSA ROAD, MALLESWARAM
BANGALORE, INDIA
560 003
+91 (0) 80 4906 3555

SHANGHAI

NO. 1619 HU HANG ROAD, XI DU TOWNSHIP
FENG XIAN DISTRICT, SHANGHAI
P.R.C.
201401
+86 21 3756 6696

**MAKING
ENERGY
MAKE
SENSE™**