

Model 009 Cartridge Circulator

The High Velocity series Taco 009 cartridge circulator is designed for quiet, efficient operation in higher-head/lower-flow applications for hydronic heating, radiant in-floor/panel heating, solar heating, heat recovery, and domestic water recirculation systems. Its unique field-serviceable cartridge contains all moving parts. Replacing the cartridge rebuilds the circulator. With no mechanical seal, the self-lubricating, maintenance free design provides unmatched reliability. Available in Cast Iron or Stainless Steel construction.



Low-Lead
Compliant

Submittal Data Information Model 009 Cartridge Circulator

Submittal Data # 101-032
Supersedes: 05/08/13

Effective: 01/12/15

Features

- Standard high capacity output-compact design
- Quiet, efficient operation
- Direct drive - Low power consumption
- Unique replaceable cartridge design — Field serviceable
- Self lubricating
- No mechanical seal
- Unmatched reliability - Maintenance free
- Universal flange to flange dimensions
- Cast Iron or Stainless Steel construction

Materials of Construction

Casing (Volute):.....Cast Iron or St. Steel
Stator Housing:Aluminum
Cartridge:.....Stainless Steel
Impeller:Non-Metallic
Shaft:.....Ceramic
Bearings:.....Carbon
O-Ring & Gaskets:.....EPDM

Model Nomenclature

F – Cast Iron, Flanged
SF – Stainless Steel, Flanged

Performance Data

Max. Flow: 10 GPM
Max. Range: 35 Feet
Min. Fluid Temperature: 40°F (4°C)
Max. Fluid Temperature: 230°F (110°C)
Max. Working Pressure: 150 psi
Connection Sizes:
3/4", 1", 1-1/4", 1-1/2" Flanged

Certifications & Listings

 **UL** US LISTED **FOR INDOOR USE ONLY**

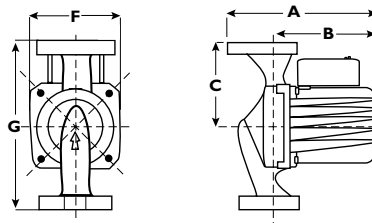
 **NSF** Low-Lead Compliant
Certified to NSF/ANSI 372

Application

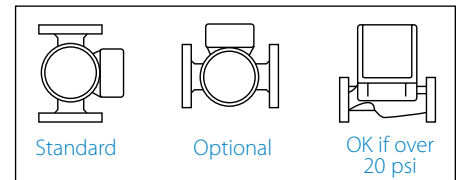
The Taco 009 is designed for a wide range of residential and light commercial higher-head/lower-flow water circulating applications. Typical uses include hydronic heating, radiant in-floor/panel heating and closed-loop solar heating systems. The Stainless Steel 009 can be used in higher-head/lower-flow heat recovery, open-loop solar heating and light commercial domestic water recirculation systems. The unique replaceable cartridge contains all of the moving parts and allows for easy service, instead of replacing the entire circulator. Compact, direct-drive, low power consumption design is ideal for high-efficiency jobs.

Pump Dimensions & Weights

Models	Casing	A		B		C		D		F		G		Ship Wt.	
		in.	mm	in.	mm	in.	mm	in.	mm	in.	mm	in.	mm	lbs.	Kg
009-F5	Cast Iron	7	178	5-11/16	144	3-3/16	81	3-15/16	84	4-1/8	105	6-3/8	162	9.5	4.3
009-SF5	St. Steel	7	178	5-11/16	144	3-3/16	81	3-15/16	84	4-1/8	105	6-3/8	162	9.5	4.3



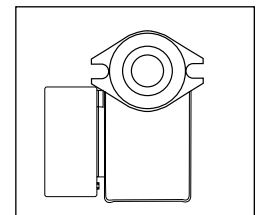
Mounting Positions



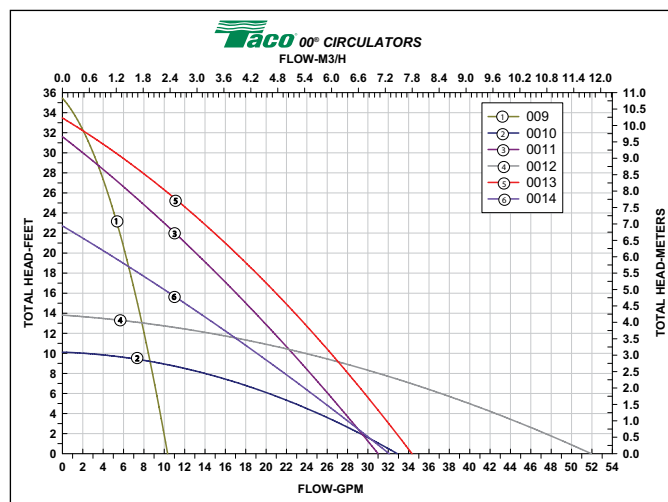
Electrical Data

Model	Volts	Hz	Ph	Amps	RPM	HP
009-F5	115	60	1	1.40	3250	1/8
009-SF5	115	60	1	1.40	3250	1/8
Motor Type	Permanent Split Capacitor Impedance Protected					
Motor Options	220/50/1, 220/60/1, 230/60/1, 100/110/50/60/1					

Flange Orientation



Performance Field - 60Hz




Do your **best work.**[®]

Model 009-IFC® Cartridge Circulator

The High Velocity series Taco 009-IFC cartridge circulator includes an Integral Flow Check (IFC®). The removable IFC replaces a separate in-line flow check, saving installation costs while improving system performance. Available in Cast Iron or Stainless Steel construction.



Low-Lead
Compliant

Submittal Data Information Model 009-IFC® Cartridge Circulator

Submittal Data # 101-099
Supersedes: 01/12/15

Effective: 11/24/15

Features

- Integral Flow Check (IFC®)
 - Prevents gravity flow
 - Eliminates separate in-line flow check
 - Reduces installed cost, easy to service
 - Improved performance vs. In-line flow checks
- Unique replaceable cartridge-Field serviceable
- Unmatched reliability-Maintenance free
- Quiet, efficient operation
- Direct drive - Low power consumption
- Self lubricating, No mechanical seal
- Standard high capacity output - Compact design
- Wide range of applications
- Cast Iron or Stainless Steel construction, Flanged connections

Materials of Construction

Casing (Volute): Cast Iron or Stainless Steel
Integral Flow Check:
Body, Plunger....Acetal
O-ring Seals.....EPDM
Spring.....Stainless Steel
Stator Housing: Aluminum
Cartridge: Stainless Steel
Impeller: Non-Metallic
Shaft: Ceramic
Bearings: Carbon
O-Ring & Gaskets: EPDM

Model Nomenclature

F – Cast Iron, Flanged
SF – Stainless Steel, Flanged
IFC – Integral Flow Check

Performance Data

Max.Flow: 10 GPM
Max. Head: 35 Feet
Minimum Fluid Temperature: 40°F (4°C)
Maximum Fluid Temperature: 230°F (110°C)
Maximum Working Pressure: 150 psi
Connection Sizes: 3/4", 1", 1-1/4", 1-1/2" Flanged

Certifications & Listings

UL US LISTED FOR INDOOR USE ONLY

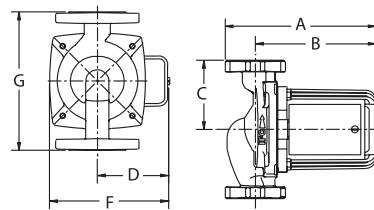
NSF Low-Lead Compliant
Certified to NSF/ANSI 372

Application

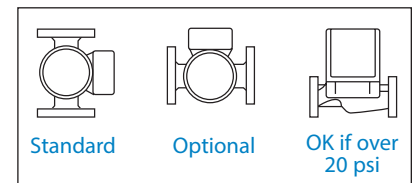
The Taco 009-IFC with Integral Flow Check (IFC®) is designed to reduce installation costs when zoning with 00® circulators on a wide range of residential and light commercial higher-head/lower-flow water circulating applications. Typical uses include hydronic heating, radiant in-floor/panel heating and closed-loop solar heating systems. The Stainless Steel 009-IFC should be used in higher-head/lower-flow heat recovery, open-loop solar heating and light commercial domestic water recirculation systems. The unique replaceable cartridge contains all of the moving parts and allows for easy service instead of replacing the entire circulator.

Pump Dimensions & Weights

Models	Casing	A		B		C		D		F		G		Ship Wt.	
		in.	mm	in.	mm	in.	mm	in.	mm	in.	mm	in.	mm	lbs.	Kg
009-F5-IFC	Cast Iron	7	178	5-11/16	144	3-3/16	81	3-3/8	86	5-1/2	140	6-3/8	162	9.5	4.3
009-SF5-IFC	St. Steel	7	178	5-11/16	144	3-3/16	81	3-3/8	86	5-1/2	140	6-3/8	162	9.5	4.3



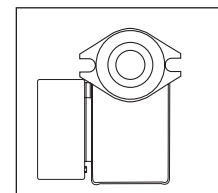
Mounting Positions



Electrical Data

Model	Volts	Hz	Ph	Amps	RPM	HP
009-F5-IFC	115	60	1	1.40	3250	1/8
009-SF5-IFC	115	60	1	1.40	3250	1/8
Motor Type	Permanent Split Capacitor Impedance Protected					
Motor Options	220/50/1, 220/60/1, 230/60/1, 100/110/50/60/1					

Flange Orientation



Performance Field - 60Hz

