

Model 008 Cartridge Circulator

The Taco 008 Cartridge Circulator is designed for quiet, efficient operation in higher-head applications for hydronic heating, radiant in-floor/panel heating, solar heating, heat recovery, water source heat pump, and domestic water recirculation systems. Its unique field-serviceable cartridge contains all moving parts. Replacing the cartridge rebuilds the circulator. With no mechanical seal, the self-lubricating, maintenance free design provides unmatched reliability. Available in Cast Iron or Stainless Steel, flanged or Low-Lead Bronze, sweat construction.



Low-Lead Bronze



Stainless Steel



Low-Lead
Compliant



Submittal Data Information Model 008 Cartridge Circulator

Submittal Data # 101-031
Supersedes: 05/08/09

Effective: 04/15/13

Features

- Standard High Capacity Output-Compact Design
- Quiet, Efficient Operation
- Direct Drive - Low Power Consumption
- Unique Replaceable Cartridge - Field Serviceable
- Self Lubricating
- No Mechanical Seal
- Unmatched Reliability - Maintenance Free
- Universal Flange to Flange Dimensions
- Cast Iron or Stainless Steel, Flanged and Bronze, Sweat Connections

Materials of Construction

Casing (Volute):
Cast Iron, Stainless Steel or Low-Lead Bronze
Stator Housing:.....Steel
Cartridge:.....Stainless Steel
Impeller:.....Non-Metallic
Shaft:.....Ceramic
Bearings:.....Carbon
O-Ring & Gaskets:.....EPDM

Model Nomenclature

F – Cast Iron, Flanged
SF – Stainless Steel, Flanged
BC – Bronze, 3/4" Sweat Connections

Performance Data

Max. Flow: 14 GPM
Max. Head: 15 Feet
Min. Fluid Temperature: 40°F (4°C)
Max. Fluid Temperature: 230°F (110°C)
Max. Working Pressure: 125 psi
Connection Sizes: 3/4", 1", 1-1/4", 1/2" Flanged
3/4" Sweat

Certifications & Listings

UL US LISTED FOR INDOOR USE ONLY

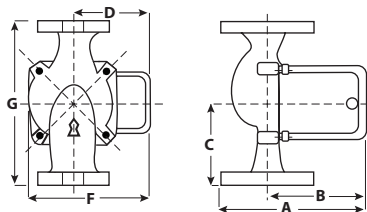
NSF Low-Lead Compliant
Certified to NSF/ANSI 372

Application

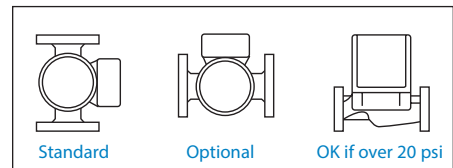
The Taco 008 is designed for a wide range of residential and light commercial higher-head water circulating applications. Typical uses include hydronic heating, radiant in-floor/panel heating and closed-loop solar heating systems. The Stainless Steel or Bronze 008 can be used in higher-head heat recovery, water source heat pump, open-loop solar heat and domestic water recirculation systems. The unique replaceable cartridge contains all of the moving parts and allows for easy service, instead of replacing the entire circulator. Compact, direct-drive, low power consumption design is ideal for high-efficiency jobs.

Pump Dimensions & Weights

Models	Casing	Flange Type*	A		B		C		D		F		G		Ship Wt.	
			in.	mm	in.	mm	in.	mm	in.	mm	in.	mm	in.	mm	lbs.	Kg
008-F6	Cast Iron	S	6	152	4	102	3-3/16	81	2-15/16	75	4-3/4	121	6-3/8	162	8.0	3.6
008-F6-3	Cast Iron	R	5-1/2	140	4	102	3-3/16	81	2-15/16	75	4-3/4	121	6-3/8	162	8.0	3.6
008-SF6	St. Steel	S	6	152	4	102	3-3/16	81	2-15/16	75	4-3/4	121	6-3/8	162	8.0	3.6
008-SF6-2	St. Steel	R	5-1/2	140	4	102	3-3/16	81	2-15/16	75	4-3/4	121	6-3/8	162	8.0	3.6
008-BC6	Bronze	---	5-5/8	143	4-9/16	116	3-3/16	81	2-15/16	75	4-3/4	121	6-3/8	162	8.0	3.6



MOUNTING POSITIONS

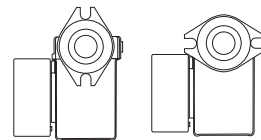


Electrical Data

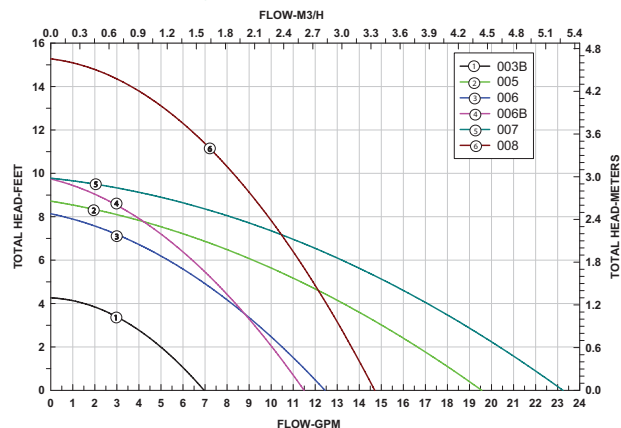
Model	Volts	Hz	Ph	Amps	RPM	HP
Cast Iron	115	60	1	.79	3250	1/25
Stainless Steel/Bronze	115	60	1	.84	3250	1/25
Motor Type	Permanent Split Capacitor Impedance Protected					
Motor Options	220/50/1, 220/60/1, 230/60/1, 100/110/50/60/1					

*Flange Orientation Type

Standard (S) Rotated (R)

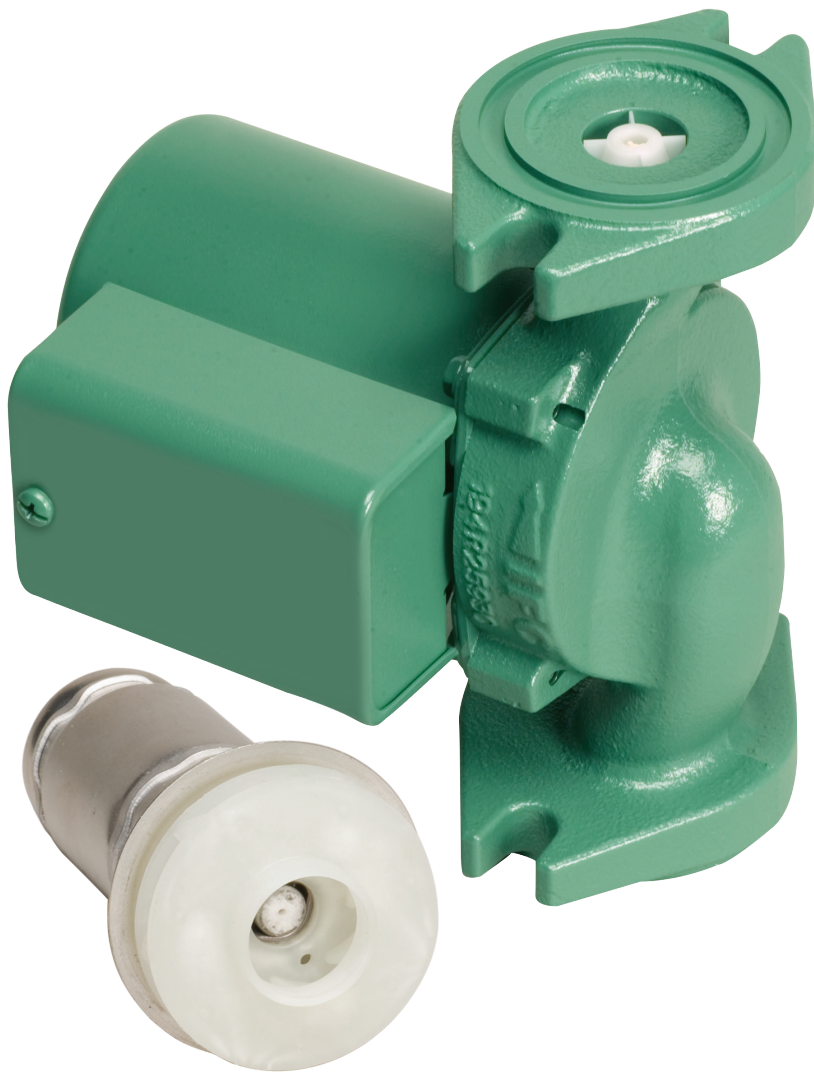


Performance Field - 60Hz **Taco** 008 CIRCULATORS



Model 008-IFC Cartridge Circulator

The 008-IFC features a removable Integral Flow Check designed to simplify piping, reduce installation costs and improve system performance. The spring-loaded IFC® replaces a separate in-line flow check to ensure protection against reverse flow and gravity flow.



Bronze 3/4" Sweat



Stainless Steel, Flanged



Low-Lead
Compliant



Submittal Data Information Model 008-IFC Cartridge Circulator

Submittal Data # 101-078
Supersedes: 06/17/10

Effective: 04/16/13

Features

- Integral Flow Check (IFC*)
Simplifies piping
Prevents gravity flow and reverse flow
Eliminates separate in-line flow check
Reduces installed cost
Improves system performance
Easy to service
- Unique replaceable cartridge-
Field serviceable
- Unmatched reliability-Maintenance free
- Quiet, efficient operation
- Self lubricating, No mechanical seal
- Wide range of applications
- Cast Iron, Bronze or St. Steel construction
- Flanged or Sweat connections

Materials of Construction

Casing (Volute): Cast Iron, Low-Lead Bronze or Stainless Steel
Integral Flow Check (IFC*):
Body, Plunger..... Acetal
O-ring Seals..... EPDM
Spring..... Stainless Steel
Stator Housing:..... Steel
Cartridge:..... Stainless Steel
Impeller:..... Non-Metallic
Shaft:..... Ceramic
Bearings:..... Carbon
O-Ring & Gaskets:..... EPDM

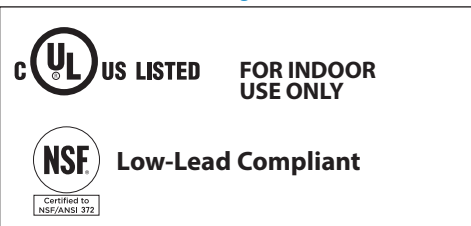
Model Nomenclature

F – Cast Iron, Flanged
SF – Stainless Steel, Flanged
BC – Bronze, Sweat, Panel Mount Tappings
IFC – Integral Flow Check

Performance Data

Max. Flow: 12.5 GPM
Max. Head: 15 Feet
Minimum Fluid Temperature: 40°F (4°C)
Maximum Fluid Temperature: 230°F (110°C)
Maximum Working Pressure: 125 psi
Connection Sizes:
3/4", 1", 1-1/4", 1-1/2" Flanged or 3/4" Sweat

Certifications & Listings



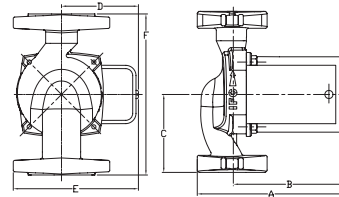
Application

- Hydronic Heating/Cooling
- Radiant
- Indirect Water Heaters
- Hydro-Air Fan Coils
- Domestic Water Recirculation (Bronze / Stainless Steel)

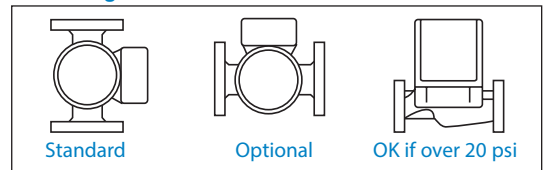
The 008-IFC is designed to simplify piping, reduce installation costs and improve system performance when zoning with 00" circulators. By locating the IFC inside the pump, a separate in-line flow check is eliminated. The low pressure drop of the IFC increases flow performance vs. in-line flow checks. Both the IFC and the cartridge are easily accessed for service.

Pump Dimensions & Weights

Models	Casing	Flange Type*	A		B		C		D		E		F		Ship Wt.	
			in.	mm	in.	mm	in.	mm	in.	mm	in.	mm	in.	mm	lbs.	Kg
008-F6-1 IFC	Cast Iron	R	5-15/16	151	4-1/2	114	3-3/16	81	2-15/16	75	5	127	6-3/8	162	9.0	4.0
008-F6- IFC	St. Steel	S	6	152	4	102	3-3/16	81	2-15/16	75	5	127	6-3/8	162	9.0	4.0
008-SF6-1 IFC	St. Steel	R	6	152	4	102	3-3/16	81	2-15/16	75	5	127	6-3/8	162	9.0	4.0
008-BC6-IFC	Bronze	---	5-5/8	143	4-9/16	116	3-3/16	81	2-15/16	75	4-11/16	119	6-3/8	162	9.0	4.0



Mounting Positions



Electrical Data

Model	Volts	Hz	Ph	Amps	RPM	HP
Cast Iron	115	60	1	.79	3250	1/25
Stainless Steel/Bronze	115	60	1	.84	3250	1/25

Motor Type: Permanent Split Capacitor Impedance Protected
Motor Options: 220/50/1, 220/60/1, 230/60/1, 100/110/50/60/1

*Flange Orientation Type

