

Model 006 Cartridge Circulator

The compact Taco 006 Cartridge Circulator is designed for circulating hot and chilled fresh water in a wide range of open and closed loop applications. The unique, replaceable cartridge contains all moving parts. Replacing the cartridge rebuilds the circulator. Its self-lubricating, maintenance free design provides quiet, efficient operation and unmatched reliability. Available in low-lead Bronze sweat or Stainless Steel threaded or union connections.



Stainless Steel, Threaded



Stainless Steel, Union



Low-Lead Compliant



Submittal Data Information Model 006 Cartridge Circulator

Submittal Data # 101-028
Supersedes: 04/04/13

Effective: 03/20/17

Features

- Standard high capacity output
- Compact design
- Quiet, efficient operation
- Direct drive - Low power consumption
- Unique replaceable cartridge design
- Field serviceable
- Self lubricating
- No mechanical seal
- Unmatched reliability
- Maintenance free
- Low-lead Bronze sweat or Stainless Steel with threaded or union connections

Materials of Construction

Casing (Volute):.....Low-lead Bronze or Stainless Steel
Stator housing:.....Steel
Cartridge:.....Stainless Steel
Impeller:Non-metallic
Shaft:.....Ceramic
Bearings:.....Carbon
O-Ring & Gaskets:EPDM
Chlorine resistant

Model Nomenclature

B - Bronze, 3/4" sweat
BC - Bronze, 1/2" sweat, panel mount tappings
ST - Stainless Steel, 3/4" NPT
SC - Stainless Steel, union, panel mount tappings

Performance Data

Flow Range: 0 – 11 GPM
Head Range: 0 – 9.5 Feet
Min. Fluid Temperature: 40°F (4°C)
Max. Fluid Temperature: 220°F (104°C)
Max. Working Pressure: 125 psi
Connection sizes:
1/2" swt, 3/4" swt, 3/4" NPT or union

Certifications & Listings

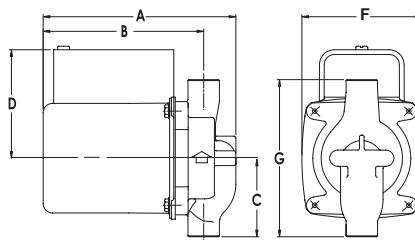


Application

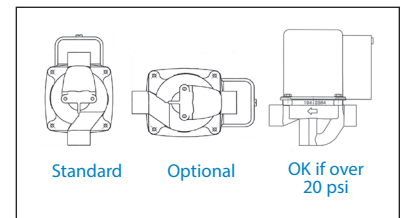
The Taco 006 is designed for circulating hot or chilled fresh water in open or closed loop applications. Typical uses include hydronic heating, domestic hot water recirculation, hydro-air heating/cooling, heat recovery units, water source heat pumps, drain down open loop Solar systems and potable water applications. The unique, replaceable cartridge contains all of the moving parts and allows for easy service instead of replacing the entire circulator. The compact, low power consumption design is ideal for high efficiency jobs.

Pump Dimensions & Weights

Models	Conn.	A		B		C		D		F		G		Ship Wt.	
		in.	mm	in.	mm	in.	mm	in.	mm	in.	mm	in.	mm	lbs.	Kg
006-BC4	1/2" Swt.	5-1/8	130	4-1/8	105	2-1/8	54	3-1/16	78	3-15/16	84	4-1/4	108	6.0	2.7
006-B4	3/4" Swt.	5-1/8	130	4-1/8	105	2-3/16	56	3-1/16	78	3-15/16	84	4-3/8	111	6.0	2.7
006-ST4	3/4" NPT	5-5/8	143	4-7/8	124	2	51	3-1/16	78	3-15/16	84	4	102	6.0	2.7
006-SC4-1	Union	5-5/32	131	4-11/32	110	2-31/32	76	3-1/16	78	3-15/16	84	5-15/16	151	6.0	2.7



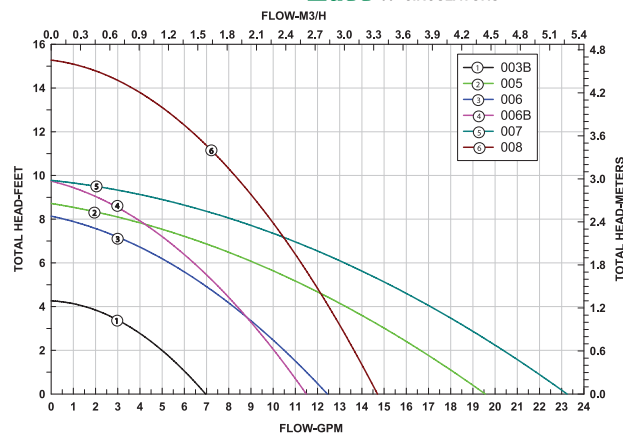
Mounting Positions



Electrical Data

Model	Volts	Hz	Ph	Amps	RPM	HP
All 006 Models	115	60	1	.52	3250	1/40
Motor Type	Permanent Split Capacitor Impedance Protected					
Motor Options	220/50/1, 220/60/1, 230/60/1, 100/110/50/60/1					

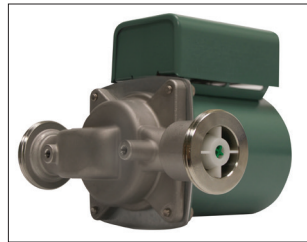
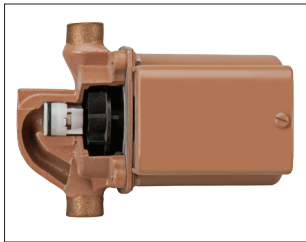
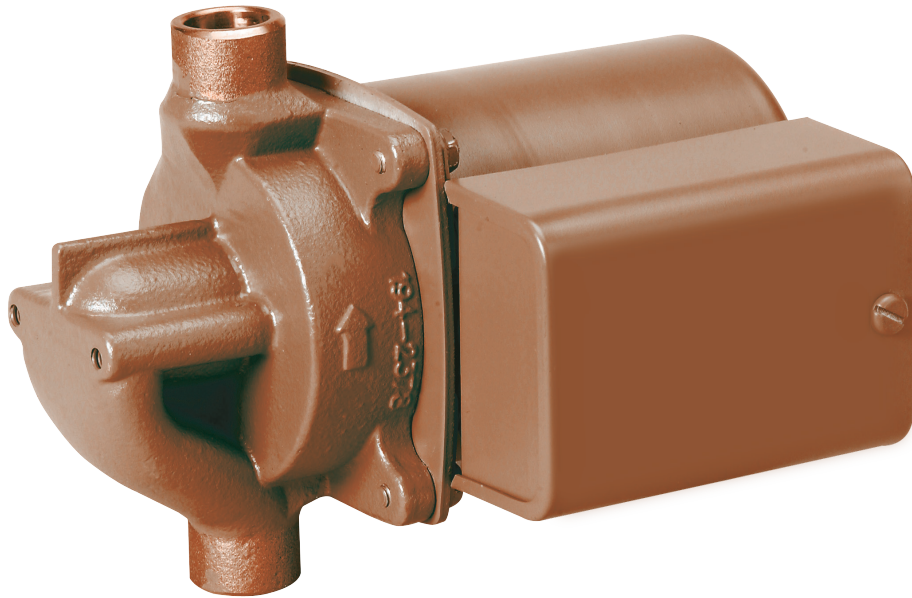
Performance Field - 60Hz 006 CIRCULATORS



Taco Inc., 1160 Cranston Street, Cranston, RI 02920 / (401) 942-8000 / Fax (401) 942-2360
Taco (Canada) Ltd., 8450 Lawson Road, Unit #3, Milton, Ontario L9T 0J8 / (905) 564-9422 / Fax (905) 564-9436

Model 006-IFC® Cartridge Circulator

The compact Taco 006-IFC® with an Integral Flow Check is designed for circulating hot and chilled fresh water in open and closed loop applications. With its patented location at the impeller inlet, the IFC eliminates the added installation costs of a separate in-line flow check, simplifies piping, and improves system performance. The unique, replaceable cartridge contains all moving parts. Replacing the cartridge rebuilds the circulator. Its self-lubricating, maintenance free design provides quiet, efficient operation and unmatched reliability.



Low-Lead Compliant



Submittal Data Information Model 006-IFC® Cartridge Circulator

Submittal Data # 101-067
Supersedes: 03/26/13

Effective: 03/29/17

Features

- Integral Flow Check (IFC) Patent# 5,664,939
 - Prevents gravity flow / reverse flow
 - Eliminates separate in-line flow check
 - Reduces installed cost
 - Improves system performance
 - Easy to service
- Unique replaceable cartridge
 - Field serviceable
- Unmatched reliability-Maintenance free
- Quiet, efficient operation
- Self lubricating, No mechanical seal
- Wide range of applications
- Bronze 1/2", 3/4" sweat or Stainless Steel with union connections

Materials of Construction

Casing (Volute):Low-lead Bronze or St. Steel
Integral Flow Check:
Body, Plunger.....Acetal
O-ring Seals.....EPDM
SpringStainless Steel
Stator housing:Steel
Cartridge:Stainless Steel
Impeller:.....Non-metallic
Shaft:.....Ceramic
Bearings:.....Carbon
O-Ring & Gaskets:.....EPDM - Chlorine resistant

Model Nomenclature

BC - Bronze sweat connections, panel mount tappings
SC - Stainless Steel, union connection, panel mount tappings
IFC - Integral Flow Check

Performance Data

Flow Range: 0 – 9 GPM
Head Range: 0 – 8.5 Feet
Minimum Fluid Temperature: 40°F (4°C)
Maximum Fluid Temperature: 220°F (104°C)
Maximum Working Pressure: 125 psi
Connection sizes: 1/2", 3/4" sweat or union

Certifications & Listings

 **FOR INDOOR USE ONLY**
US LISTED

 **Low-Lead Compliant**
Certified to NSF/ANSI 61 & 372

Application

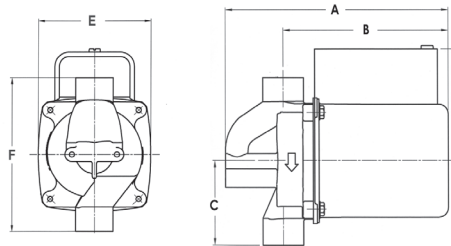
- Domestic Hot Water Recirculation
- Hydro-Air Fan Coils
- Heat Recovery Units
- Water Source Heat Pumps
- Potable Water Systems

The 006-IFC with an Integral Flow Check (IFC®) is designed for the circulation of hot or chilled fresh water in open or closed loop applications. The IFC feature simplifies piping, eliminates separate in-line flow check, reduces installation costs and improves system performance. With its patented location at the impeller inlet*, the IFC is easy to service without removing the entire unit from system piping. The unique, replaceable cartridge contains all of the moving parts and allows for easy service instead of replacing the entire circulator.

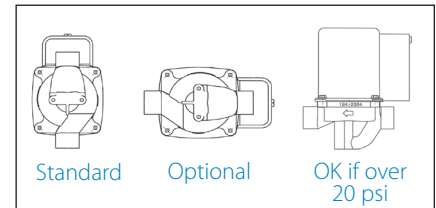
* IFC is located in the discharge port on union connection model only

Pump Dimensions & Weights

Models	Conn.	A		B		C		D		E		F		Ship Wt.	
		in.	mm	in.	mm	in.	mm	in.	mm	in.	mm	in.	mm	lbs.	Kg
006-BC7-1 IFC	1/2" Swt.	6	152	4-7/8	124	2-3/16	56	3-15/16	75	3-15/16	84	4-3/8	111	6.0	2.7
006-BC7-IFC	3/4" Swt.	6	152	4-7/8	124	2-3/16	56	3-15/16	75	3-15/16	84	4-3/8	111	6.0	2.7
006-SC7-IFC	Union	6	152	4-7/8	124	2-31/32	76	3-15/16	75	3-15/16	84	5-15/16	151	6.0	2.7

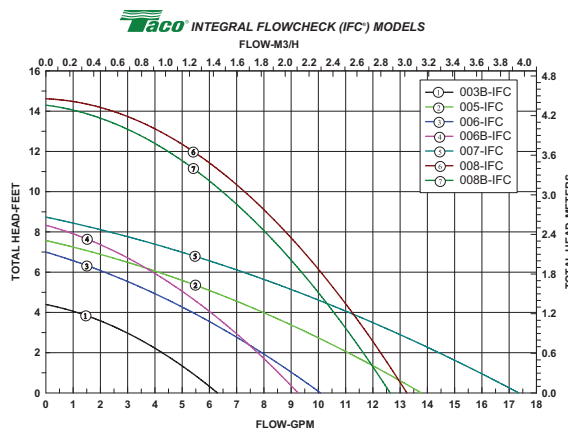


Mounting Positions



Electrical Data

Model	Volts	Hz	Ph	Amps	RPM	HP
All 006 Models	115	60	1	.52	3250	1/40
Motor Type	Permanent Split Capacitor Impedance Protected					
Motor Options	220/50/1, 220/60/1, 230/60/1, 100/110/50/60/1					




A Taco Family Company

Taco Inc., 1160 Cranston Street, Cranston, RI 02920 / (401) 942-8000 / Fax (401) 942-2360
Taco (Canada) Ltd., 8450 Lawson Road, Unit #3, Milton, Ontario L9T 0J8 / (905) 564-9422 / Fax (905) 564-9436

Model 006 Flanged Cartridge Circulator

The compact Taco 006 flanged cartridge circulator is designed for circulating hot and chilled water in a wide range of closed loop applications. Its unique, field-serviceable cartridge contains all moving parts. Replacing the cartridge rebuilds the circulator. With no mechanical seal, the self-lubricating, maintenance free design provides quiet, efficient operation and unmatched reliability. Available in cast iron, flanged construction. Now available with three Variable Speed control options. See Catalog# 100-24.



Ideal for **small heating zones**



Submittal Data Information

Model 006 Flanged Cartridge Circulator

Submittal Data # 101-097
Supersedes: 02/23/12

Effective: 01/15/14

Features

- Standard High Capacity Output-Compact Design
- Optional Variable Speed or Priority Zoning Control
- Quiet, Efficient Operation
- Direct Drive-Low Power Consumption
- Unique Replaceable Cartridge Design-Field Serviceable
- Self Lubricating
- No Mechanical Seal
- Unmatched Reliability-Maintenance Free
- Cast Iron, Flanged Construction

Materials of Construction

Casing (Volute):..... Cast Iron
Stator Housing:..... Steel
Cartridge:..... Stainless Steel
Impeller:..... Non-Metallic
Shaft:..... Ceramic
Bearings:..... Carbon
O-Ring & Gaskets:..... EPDM

Model Nomenclature

F – Cast Iron, Flanged
Variations:
Z – Zoning Circulator
VR – Variable Speed Outdoor Reset
VS – Variable Speed Set Point
VV – Variable Speed Variable Voltage
J – Bronze Cartridge with Cast Iron Casing

Performance Data

Max. Flow: 12.5 GPM
Max. Head: 8 Feet
Min. Fluid Temperature: 40°F (4°C)
Max. Fluid Temperature: 230°F (110°C)
Max. Working Pressure: 125 psi
Connection Sizes:
3/4", 1", 1-1/4", 1-1/2" Flanged

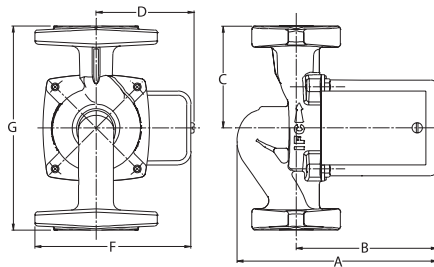


Application

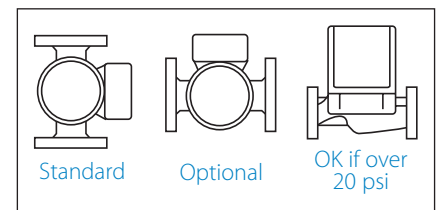
The 006 Flanged Cartridge Circulator is designed for the circulation of hot or chilled water in a wide range of closed loop applications. Typical uses include secondary hydronic heating zones, radiant heat injection, and hydro-air fan coil heating/cooling. The unique, replaceable cartridge contains all of the moving parts and allows for easy service instead of replacing the entire circulator. Available with optional Variable Speed control or Priority Zoning control with built-in transformer, relay, and priority switch in one complete package to make it ideal for zoning.

Pump Dimensions & Weights

Model	A		B		C		D		F		G		Ship Wt.	
	in.	mm	in.	mm	in.	mm	in.	mm	in.	mm	in.	mm	lbs.	Kg
006-F4	6-1/4	159	4-3/8	111	3-3/16	78	2-15/16	75	4-7/8	124	6-3/8	162	7.0	3.2
006-ZF4-1	6-1/4	159	4-3/8	111	3-3/16	78	3-9/16	91	5-3/8	137	6-1/2	165	8.0	3.6



Mounting Positions



Electrical Data

Model	Volts	Hz	Ph	Amps	RPM	HP
006 All Models	115	60	1	.52	3250	1/40
Motor Type	Permanent Split Capacitor Impedance Protected					
Motor Options	220/50/1, 220/60/1, 230/60/1, 100/110/50/60/1					

Flange Orientation

