

Model 003 Cartridge Circulator

The compact Taco 003 Cartridge Circulator is designed for circulating hot and chilled fresh water in open and closed loop, lower flow applications. It reduces erosion corrosion and flow noise in shorter pipe run systems. The unique, replaceable cartridge contains all moving parts. Replacing the cartridge rebuilds the circulator. Its self-lubricating, maintenance free design provides quiet, efficient operation and unmatched reliability. Available in low-lead Bronze sweat or Stainless Steel threaded or union connections.



Stainless Steel, Threaded



Stainless Steel, Union



Low-Lead Compliant



Submittal Data Information Model 003 Cartridge Circulator

Submittal Data # 101-061
Supersedes: 06/23/15

Effective: 03/17/17

Features

- Reduces erosion corrosion and flow noise in shorter pipe run applications
- Standard high capacity output - Compact design
- Quiet, efficient operation
- Direct drive - Low power consumption
- Unique replaceable cartridge design - Field serviceable
- Self lubricating
- No mechanical seal
- Unmatched reliability - Maintenance free
- Low-lead Bronze sweat or Stainless Steel with threaded or union connections

Materials of Construction

Casing (Volute):.....Low-lead Bronze or Stainless Steel
Stator housing:.....Steel
Cartridge:.....Stainless Steel
Impeller:Non-metallic
Shaft:.....Ceramic
Bearings:.....Carbon
O-Ring & Gaskets:EPDM
Chlorine resistant

Model Nomenclature

B - Bronze, 3/4" sweat
BC - Bronze, 1/2" sweat, panel mount tappings
ST - Stainless Steel, 3/4" NPT
SC - Stainless Steel, union, panel mount tappings

Performance Data

Flow Range: 0 – 7 GPM
Head Range: 0 – 4.5 Feet
Min. Fluid Temperature: 40°F (4°C)
Max. Fluid Temperature: 220°F (104°C)
Max. Working Pressure: 125 psi
Connection sizes:
1/2" swt, 3/4" swt, 3/4" NPT or union

Certifications & Listings

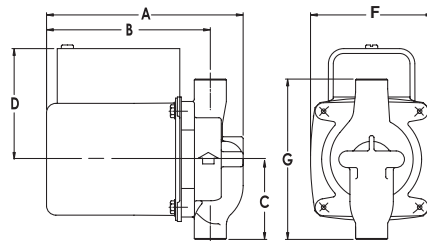


Application

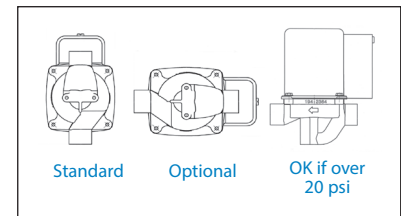
The Taco 003 is designed for circulating hot or chilled fresh water in open or closed loop, lower flow applications. Flow characteristics are ideal for domestic hot water recirculation, heat recovery units, water source heat pumps and potable water systems. The unique, replaceable cartridge contains all of the moving parts and allows for easy service instead of replacing the entire circulator. The compact, low power consumption design is ideal for high efficiency jobs.

Pump Dimensions & Weights

Models	Conn.	A		B		C		D		F		G		Ship Wt.	
		in.	mm	in.	mm	in.	mm	in.	mm	in.	mm	in.	mm	lbs.	Kg
003-BC4	1/2" Swt.	5-1/8	130	4-1/8	105	2-1/8	54	3-1/16	78	3-15/16	84	4-1/4	108	6.0	2.7
003-B4	3/4" Swt.	5-1/8	130	4-1/8	105	2-3/16	56	3-1/16	78	3-15/16	84	4-3/8	111	6.0	2.7
003-ST4	3/4" NPT	5-5/8	143	4-7/8	124	2	51	3-1/16	78	3-15/16	84	4	102	6.0	2.7
003-SC4-1	Union	5-5/32	131	4-11/32	110	2-31/32	76	3-1/16	78	3-15/16	84	5-15/16	151	6.0	2.7



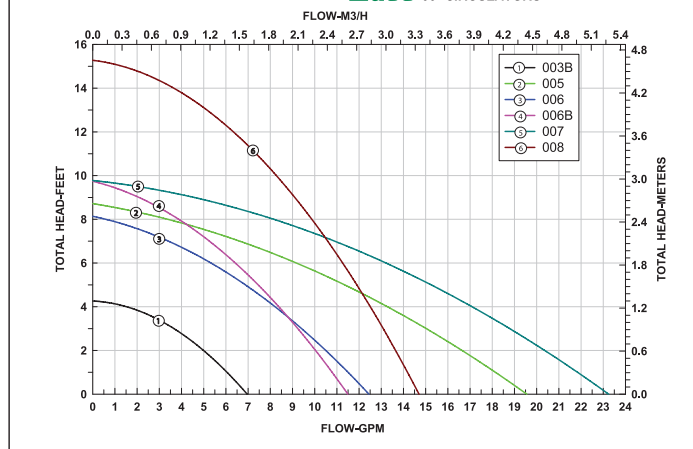
Mounting Positions



Electrical Data

Model	Volts	Hz	Ph	Amps	RPM	HP
All 003 Models	115	60	1	.43	3250	1/40
Motor Type	Permanent Split Capacitor Impedance Protected					
Motor Options	220/50/1, 220/60/1, 230/60/1, 100/110/50/60/1					

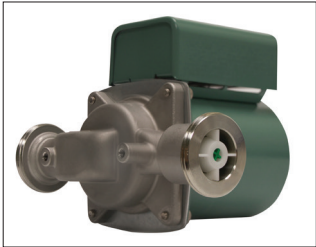
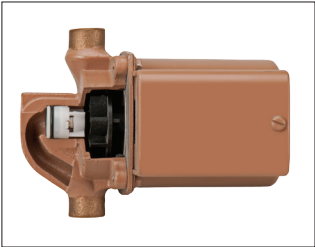
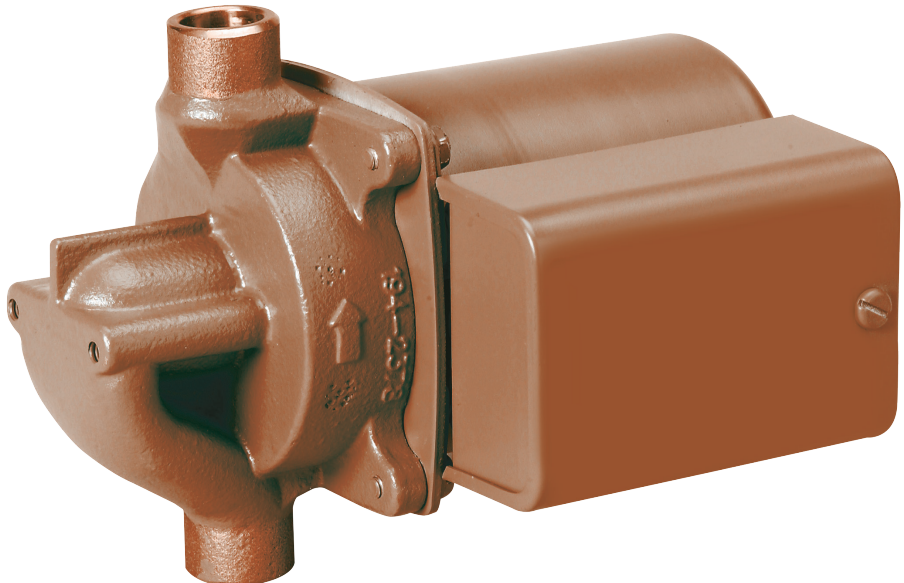
Performance Field - 60Hz



Taco Inc., 1160 Cranston Street, Cranston, RI 02920 / (401) 942-8000 / Fax (401) 942-2360
Taco (Canada) Ltd., 8450 Lawson Road, Unit #3, Milton, Ontario L9T 0J8 / (905) 564-9422 / Fax (905) 564-9436

Model 003-IFC® Cartridge Circulator

The compact Taco 003-IFC® with an Integral Flow Check is designed for circulating hot and chilled fresh water in open and closed loop applications. With its patented location at the impeller inlet, the IFC eliminates the added installation costs of a separate in-line flow check, simplifies piping and improves system performance. The unique, replaceable cartridge contains all moving parts. Replacing the cartridge rebuilds the circulator. Its self-lubricating, maintenance free design provides quiet, efficient operation and unmatched reliability.



Low-Lead Compliant



Submittal Data Information Model 003-IFC® Cartridge Circulator

Submittal Data # 101-082
Supersedes: 04/04/13

Effective: 03/29/17

Features

- Integral Flow Check (IFC®)
Patent #5,664,939
Prevents gravity flow / reverse flow
Eliminates separate in-line flow check
Reduces installed cost
Improves system performance
Easy to service
- Unique replaceable cartridge -
Field serviceable
- Unmatched reliability-Maintenance free
- Quiet, efficient operation
- Self lubricating, No mechanical seal
- Wide range of applications
- Bronze 1/2", 3/4" sweat or Stainless Steel
with union connections

Materials of Construction

Casing (Volute): Low-lead Bronze or Stainless Steel
Integral Flow Check (IFC®):
Body, Plunger.....Acetal
O-ring Seals.....EPDM
SpringStainless Steel
Stator housing:.....Steel
Cartridge:.....Stainless Steel
Impeller:Non-metallic
Shaft:.....Ceramic
Bearings:.....Carbon
O-Ring & Gaskets:.....EPDM - Chlorine resistant

Model Nomenclature


BC – Bronze, panel mount tapings
SC – Stainless Steel, union connection,
panel mount tapings
IFC– Integral Flow Check

Performance Data

Flow Range: 0 - 6 GPM
Head Range: 0 - 4.5 Feet
Minimum Fluid Temperature: 40°F (4°C)
Maximum Fluid Temperature: 220°F (104°C)
Maximum Working Pressure: 125 psi
Connection sizes: 1/2", 3/4" sweat or union

Certifications & Listings

 **FOR INDOOR
USE ONLY**

 **Low-Lead Compliant**
Certified to NSF/ANSI 61 & 372

Application

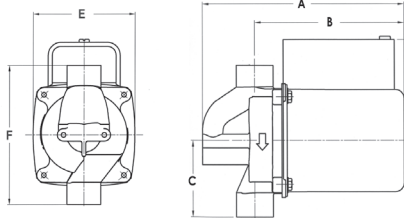
- Domestic Hot Water Recirculation
- Hydro-Air Fan Coils
- Heat Recovery Units
- Water Source Heat Pumps
- Potable Water Systems

The 003-IFC with an Integral Flow Check (IFC®) is designed for the circulation of hot or chilled fresh water in open or closed loop applications. The IFC feature simplifies piping, eliminates separate in-line flow check, reduces installation costs and improves system performance. With its patented location at the impeller inlet*, the IFC is easy to service without removing the entire unit from system piping. The unique, replaceable cartridge contains all of the moving parts and allows for easy service instead of replacing the entire circulator.

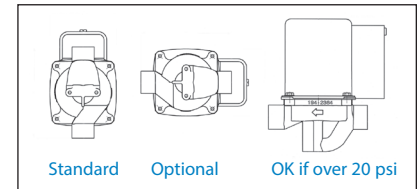
* IFC is located in the discharge port on union connection model only

Pump Dimensions & Weights

Models	Conn.	A		B		C		D		E		F		Ship Wt.	
		in.	mm	in.	mm	in.	mm	in.	mm	in.	mm	in.	mm	lbs.	Kg
003-BC4-1 IFC	1/2" Swt.	6	152	4-7/8	124	2-3/16	56	2-15/16	75	3-5/16	84	4-3/8	111	6.0	2.7
003-BC4-IFC	3/4" Swt.	6	152	4-7/8	124	2-3/16	56	2-15/16	75	3-5/16	84	4-3/8	111	6.0	2.7
003-SC4-IFC	Union	6	152	4-7/8	124	2-3/16	56	2-15/16	75	3-5/16	84	5-15/16	151	6.0	2.7



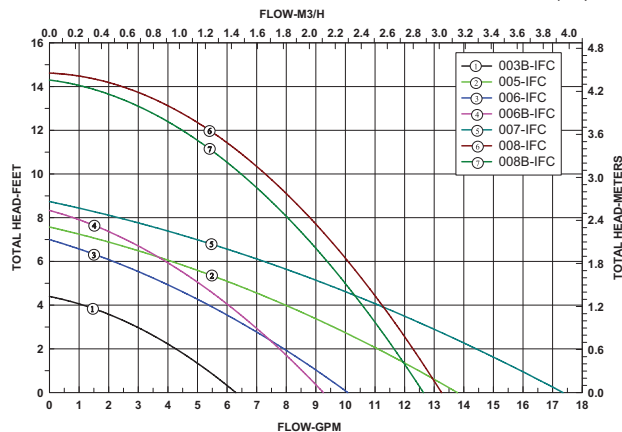
Mounting Positions



Electrical Data

Model	Volts	Hz	Ph	Amps	RPM	HP
All 003 Models	115	60	1	.45	3250	1/40
Motor Type	Permanent Split Capacitor Impedance Protected					
Motor Options	220/50/1, 220/60/1, 230/60/1, 100/110/50/60/1					

Performance Field - 60Hz INTEGRAL FLOWCHECK (IFC®) MODELS




Taco
Comfort Solutions®
A Taco Family Company

Taco Inc., 1160 Cranston Street, Cranston, RI 02920 / (401) 942-8000 / Fax (401) 942-2360
Taco (Canada) Ltd., 8450 Lawson Road, Unit #3, Milton, Ontario L9T 0J8 / (905) 564-9422 / Fax (905) 564-9436