

## Model 0012 Cartridge Circulator

The High Velocity Series Taco 0012 Cartridge Circulator is designed for high flow / medium head applications in large residential / light commercial hydronic heating, radiant heating, and chilled water cooling systems. The unique ACB anti-condensate baffle with ambient air flow prevents the build up of condensate on the motor windings when pumping chilled water. Its unique field-serviceable cartridge contains all moving parts. Replacing the cartridge rebuilds the circulator. With no mechanical seal, the self-lubricating, maintenance free design provides unmatched reliability. Compact and lightweight, with excellent performance characteristics, the 0012 is ideal for high efficiency jobs where space is a premium. Available in Cast Iron or Stainless Steel construction.



Low-Lead  
Compliant

# Submittal Data Information Model 0012 Cartridge Circulator

Submittal Data # 101-035  
Supersedes: 05/31/13

Effective: 01/12/15

## Features

- Exclusive ACB Anti-Condensate Baffle with Ambient Air Flow-Protects Motor Windings against Condensate Buildup
- High Velocity Performance-Compact Design
- Quiet, Efficient Operation
- Direct Drive-Low Power Consumption
- Unique Replaceable Cartridge Design-Field Serviceable
- Self Lubricating
- No Mechanical Seal
- Unmatched Reliability-Maintenance Free
- Universal Flange to Flange dimensions
- Cast Iron or Stainless Steel Construction

## Materials of Construction

Casing (Volute):.....Cast Iron or Stainless Steel  
Stator Housing:.....Aluminum  
Cartridge:.....Stainless Steel  
Impeller:.....Non-Metallic  
Shaft:.....Ceramic  
Bearings:.....Carbon  
O-Ring & Gaskets:.....EPDM

## Model Nomenclature

F – Cast Iron, Flanged  
SF – Stainless Steel, Flanged

## Performance Data

Max. Flow: 52 GPM  
Max. Head: 14.5 Feet  
Min. Fluid Temperature: 40°F (4°C)  
Max. Fluid Temperature: 230°F (110°C)  
Max. Working Pressure: 150 psi  
Connection Sizes: 1-1/4", 1-1/2" or 2" Flanged

## Certifications & Listings

**UL** US LISTED FOR INDOOR USE ONLY

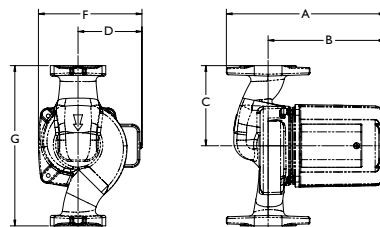
**NSF** Low-Lead Compliant  
Certified to NSF/ANSI 372

## Application

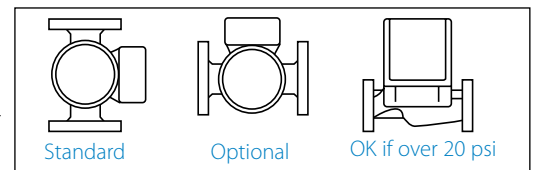
The Taco 0012 is specifically designed for high flow/medium head applications in large residential and light commercial systems. Ideal for large BTUH Boilers, 2" recirculation loops, Primary/Secondary loops, commercial water heaters and light commercial heating and cooling systems. The Stainless Steel 0012 can be used on open loop systems. The unique replaceable cartridge contains all of the moving parts and allows for easy service instead of replacing the entire circulator. Universal flange to flange dimensions and orientation allows the 0012 to easily replace other models. Compact, low power consumption design makes it ideal for high-efficiency jobs. The 0012-F4 is a direct replacement for the HV Series and the 0012-F4-1 is a direct replacement for the 2" Series using existing flanges.

## Pump Dimensions & Weights FLANGES INCLUDED

Models	Casing	Flange Size	Flange Orientation	A		B		C		D		F		G		Ship Wt.	
				in.	mm	in.	mm	in.	mm	in.	mm	in.	mm	in.	mm	lbs.	Kg
0012-F4	Cast Iron	1-1/2"	S	8-5/8	219	6-3/8	162	4-1/4	108	3-5/16	84	5-1/2	140	8-1/2	216	13.0	5.9
0012-F4-4	Cast Iron	1-1/2"	R	8-1/16	205	6-3/8	162	4-1/4	108	3-5/16	84	6	152	8-1/2	216	13.0	5.9
0012-SF4	St. Steel	1-1/2"	S	8-5/8	219	6-3/8	162	4-1/4	108	3-5/16	84	5-1/2	140	8-1/2	216	13.0	5.9
0012-SF4-5	St. Steel	1-1/2"	R	8-1/16	205	6-3/8	162	4-1/4	108	3-5/16	84	6	152	8-1/2	216	13.0	5.9
0012-F4-1	Cast Iron	2"	S	9	229	6-3/8	162	4-1/4	108	3-5/16	84	5-1/2	140	8-1/2	216	13.0	5.9
0012-SF4-1	St. Steel	2"	S	9	229	6-3/8	162	4-1/4	108	3-5/16	84	5-1/2	140	8-1/2	216	13.0	5.9



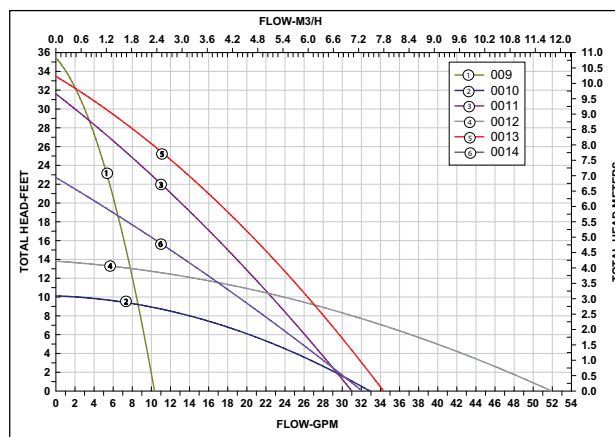
## Mounting Positions



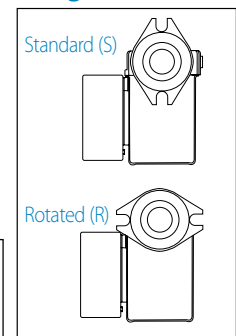
## Electrical Data

Model	Volts	Hz	Ph	Amps	RPM	HP
All Models	115	60	1	1.33	3250	1/8
Motor Type	Permanent Split Capacitor Impedance Protected					
Motor Options	220/50/1, 220/60/1, 230/60/1, 100/110/50/60/1					

## Performance Field — 60Hz



## Flange Orientation



**Taco**  
Do your best work.®

Taco Inc., 1160 Cranston Street, Cranston, RI 02920 / (401) 942-8000 / Fax (401) 942-2360  
Taco (Canada) Ltd., 8450 Lawson Road, Unit #3, Milton, Ontario L9T 0J8 / (905) 564-9422 / Fax (905) 564-9436  
[www.taco-hvac.com](http://www.taco-hvac.com)

### **Model 0012-IFC® Cartridge Circulator**

The High Velocity series Taco 0012-IFC Cartridge Circulator now includes an Integral Flow Check (IFC). The removable IFC replaces a separate in-line flow check, saving installation costs while improving system performance. Available in Cast Iron or Stainless Steel construction.



**Low-Lead  
Compliant**



# Submittal Data Information Model 0012-IFC® Cartridge Circulator

Submittal Data # 101-100  
Supersedes: 06/12/13

Effective: 01/12/15

## Features

- Integral Flow Check (IFC®)
  - Prevents gravity flow
  - Eliminates separate in-line flow check
  - Reduces installed cost, easy to service
  - Improved performance vs. In-line flow checks
- Unique replaceable cartridge
  - Field serviceable
- Unmatched reliability
  - Maintenance free
- Quiet, efficient operation
- Direct drive-Low power consumption
- Self lubricating, No mechanical seal
- Standard high capacity output
  - Compact design
- Wide range of applications
- Cast Iron or Stainless Steel construction, Flanged connections

## Materials of Construction

Casing (Volute): Cast Iron or Stainless Steel  
Integral Flow Check:  
Body, Plunger.....Acetal  
O-ring Seals .....EPDM  
Spring.....Stainless Steel  
Stator Housing:.....Aluminum  
Cartridge:.....Stainless Steel  
Impeller: .....Non-Metallic  
Shaft:.....Ceramic  
Bearings:.....Carbon  
O-Ring & Gaskets:.....EPDM

## Model Nomenclature

F – Cast Iron, Flanged  
SF – Stainless Steel, Flanged  
IFC – Integral Flow Check

## Performance Data

Max. Flow: 42 GPM  
Max. Head: 13 Feet  
Min. Fluid Temperature: 40°F (4°C)  
Max. Fluid Temperature: 230°F (110°C)  
Max. Working Pressure: 150 psi  
Connection Sizes: 1-1/2" or 2", Flanged

## Certifications & Listings

 **US LISTED** FOR INDOOR USE ONLY

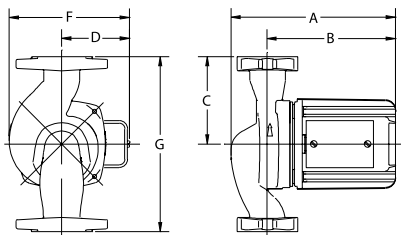
 **Low-Lead Compliant**  
Certified to NSF/ANSI 372

## Application

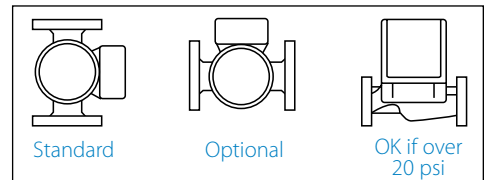
The Taco 0012-IFC with Integral Flow Check (IFC®) is designed to reduce installation costs when zoning with 00° circulators on high flow / medium head applications in large residential and light commercial systems. Ideal for large BTUH Boilers, 2" recirculation loops, primary/secondary loops, commercial water heaters and light commercial heating and cooling systems. The Stainless Steel 0012-IFC can be used on open loop systems. The unique replaceable cartridge contains all of the moving parts and allows for easy service instead of replacing the entire circulator.

## Pump Dimensions & Weights FLANGES INCLUDED

Models	Casing	Flange Size	Flange Code	A		B		C		D		F		G		Ship Wt.	
				in.	mm	in.	mm	in.	mm	in.	mm	in.	mm	in.	mm	lbs.	Kg
0012-F4-IFC	Cast Iron	1-1/2"	R	8-1/16	205	6-3/8	162	4-1/4	108	3-5/16	84	6	152	8-1/2	216	14.0	6.3
0012-F4-2 IFC	Cast Iron	1-1/2"	S	8-5/8	219	6-3/8	162	4-1/4	108	3-5/16	84	6	152	8-1/2	216	14	6.3
0012-F4-1 IFC	Cast Iron	2"	S	9	229	6-3/8	162	4-1/4	108	3-5/16	84	6	152	8-1/2	216	14	6.3
0012-SF4-IFC	St. Steel	1-1/2"	S	8-5/8	219	6-3/8	162	4-1/4	108	3-5/16	84	6	152	8-1/2	216	14	6.3
0012-SF4-2 IFC	St. Steel	1-1/2"	R	8-1/16	205	6-3/8	162	4-1/4	108	3-5/16	84	6	152	8-1/2	216	14	6.3



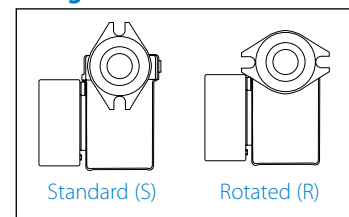
## Mounting Positions



## Electrical Data

Model	Volts	Hz	Ph	Amps	RPM	HP
All Models	115	60	1	1.33	3250	1/8
Motor Type	Permanent Split Capacitor Impedance Protected					
Motor Options	220/50/1, 220/60/1, 230/60/1, 100/110/50/60/1					

## Flange Orientation



## Performance Field - 60Hz

