

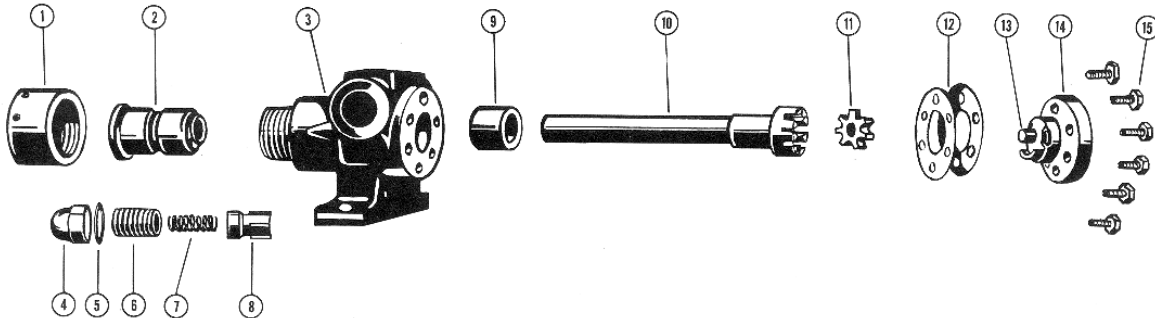
VICAN HEAVY DUTY UNMOUNTED PUMP

**MODEL C-432 with Mechanical Seal**

BULLETIN: EVD-C432S-C  
 PAGE: 1  
 EFFECTIVE: A. 25/08/2004

Subject to change without notice  
 F.O.B. Factory

Supersedes all previous parts lists



ITEM	DESCRIPTION	MATERIAL	PART NUMBER	QTY	PRICE
1	Packing Nut	Plated Steel	2-528-001-241-00	1	
2	Mechanical Seal	Buna-N (Standard)	2-471-003-999-00	1	
		Viton (Optional)	2-471-017-999-00	1	
		Teflon (Optional)	2-471-004-999-00	1	
3	Casing and Bushing Assembly	Iron / Carbon - Valve Type - CW Rotation	3-160-034-080-00	1	
		Iron / Carbon - Plain Type - CW Rotation	3-160-031-080-00	1	
4	Relief Valve Cap	Steel	2-798-016-375-00	1	
5	Gasket for Relief Valve Cap	Standard	2-305-032-806-62	1	
6	Relief Valve Adjusting Screw	Steel	2-595-014-375-00	1	
7	Relief Valve Spring	Stainless Steel - 25 to 100 PSI (Code- White)	2-760-017-610-00	1	
		Stainless Steel - 101to 250 PSI (Code-Orange)	2-760-018-610-00	1	
8	Relief Valve Poppet	Steel	2-796-028-375-00	1	
9	Casing Bushing	Carbon Graphite	2-094-001-880-00	1	
10	Rotor and Shaft	Steel	2-561-006-235-00	1	
11	Idler	P.M. Steel	2-415-001-354-00	1	
12	Head Gasket (Set)	Standard	3-310-001-999-00	1	
13	Idler Pin, Plain	Nitralloy	2-430-001-321-00	1	
14	Head (Plain) & Plain Idler Pin Assembly	Iron / Nitralloy	3-355-001-011-00	1	
15	Capscrew 1/4" NF 5/8" Lg. for Head	Steel - Grade 5	2-150-001-255-00	6	

NOTE: Packing must be ordered in multiples of 10 rings