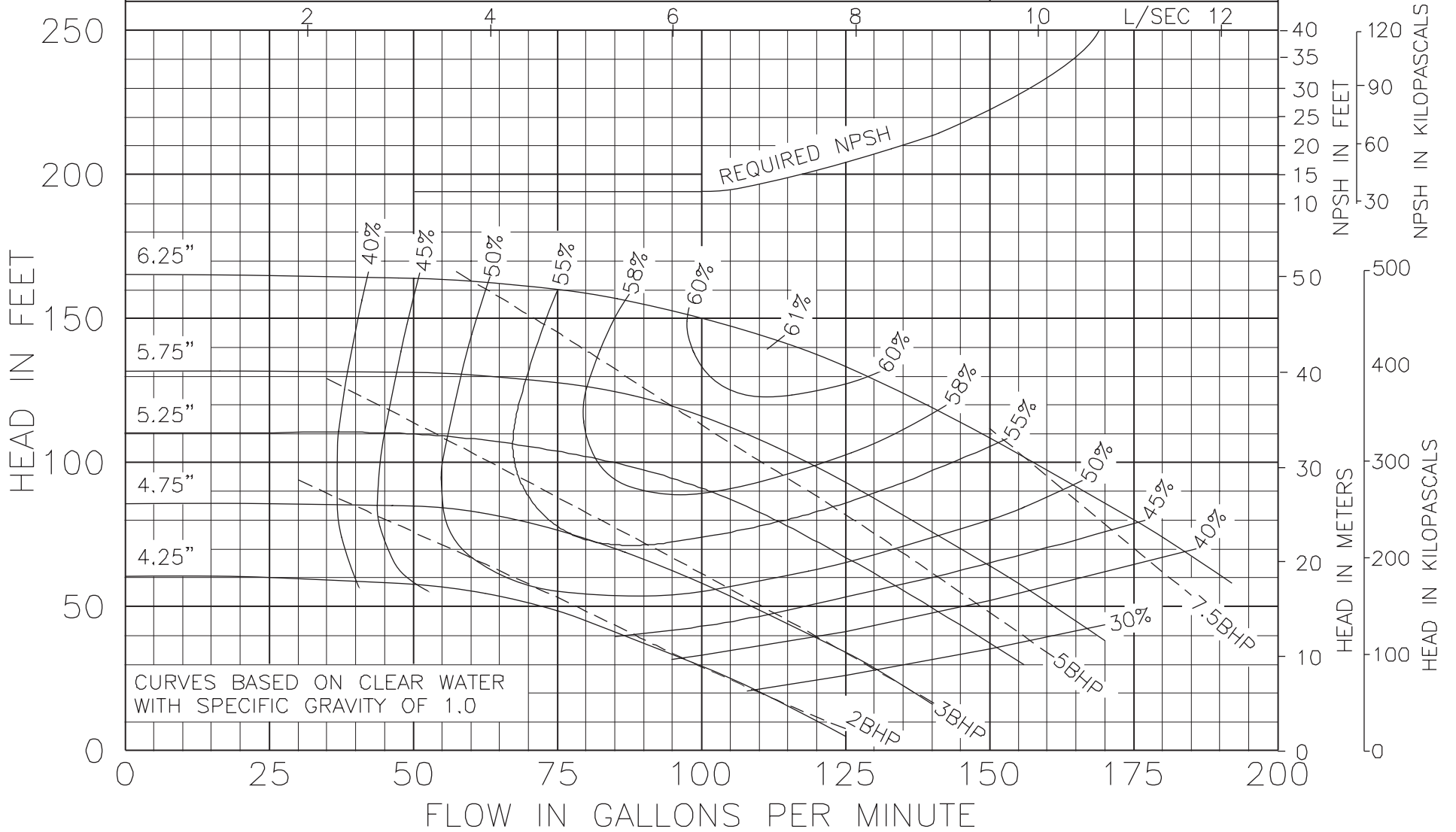




Model 1506  
KV & KS Series

3500 RPM  
October 23, 2000

Curve no. 1936  
Min. Imp. Dia. 4.25  
Size 1 1/2 x 1 1/2 x 6

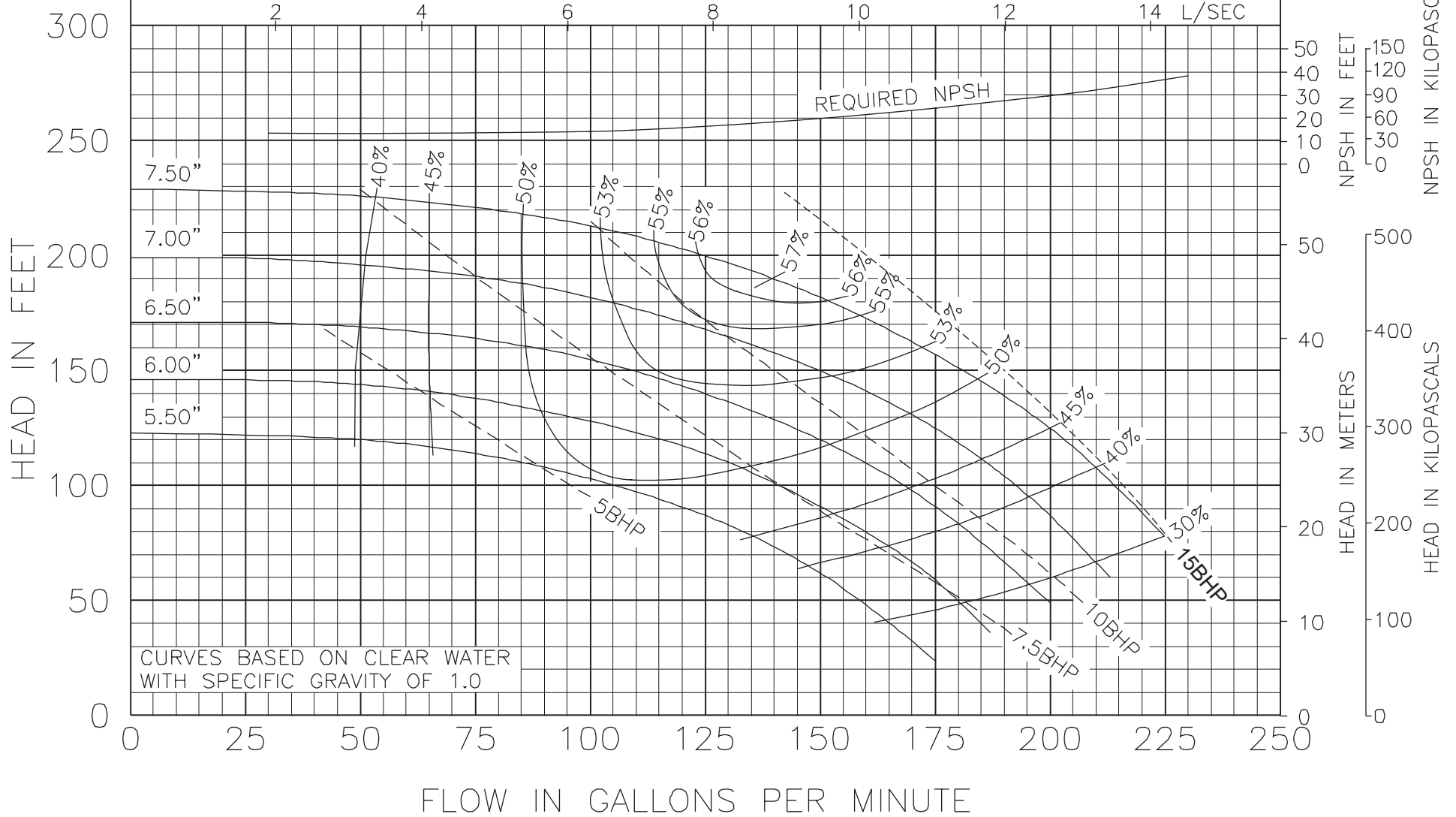




Model 1507  
KV & KS Series

3500 RPM  
October 23, 2000

Curve no. 1972  
Min. Imp. Dia. 5.50  
Size 1 1/2 x 1 1/2 x 7

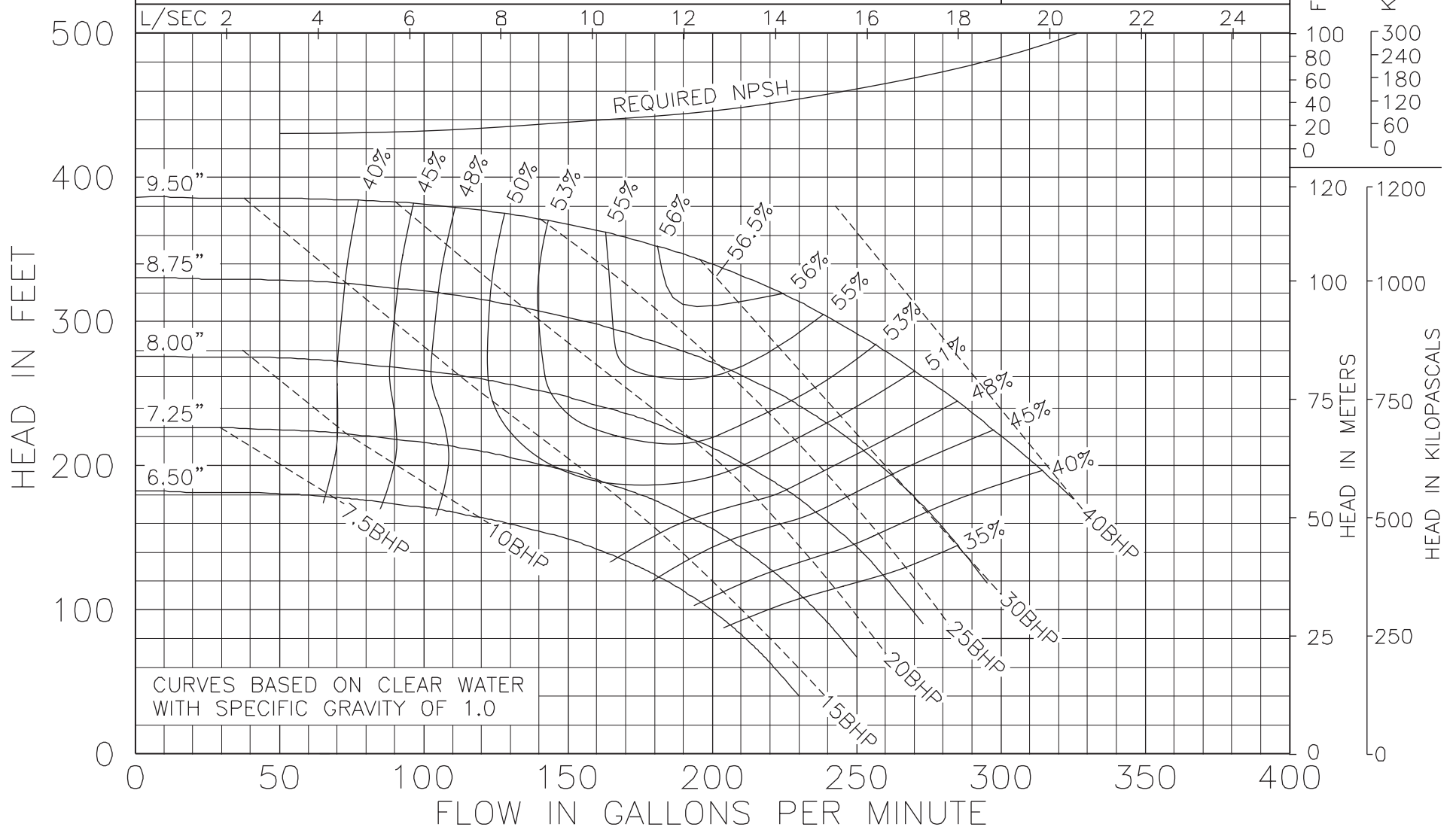




Model 1509  
KV & KS Series

3500 RPM  
August 2, 2001

Curve no. 2048  
Min. Imp. Dia. 6.50  
Size 1.5 x 1.5 x 9.0

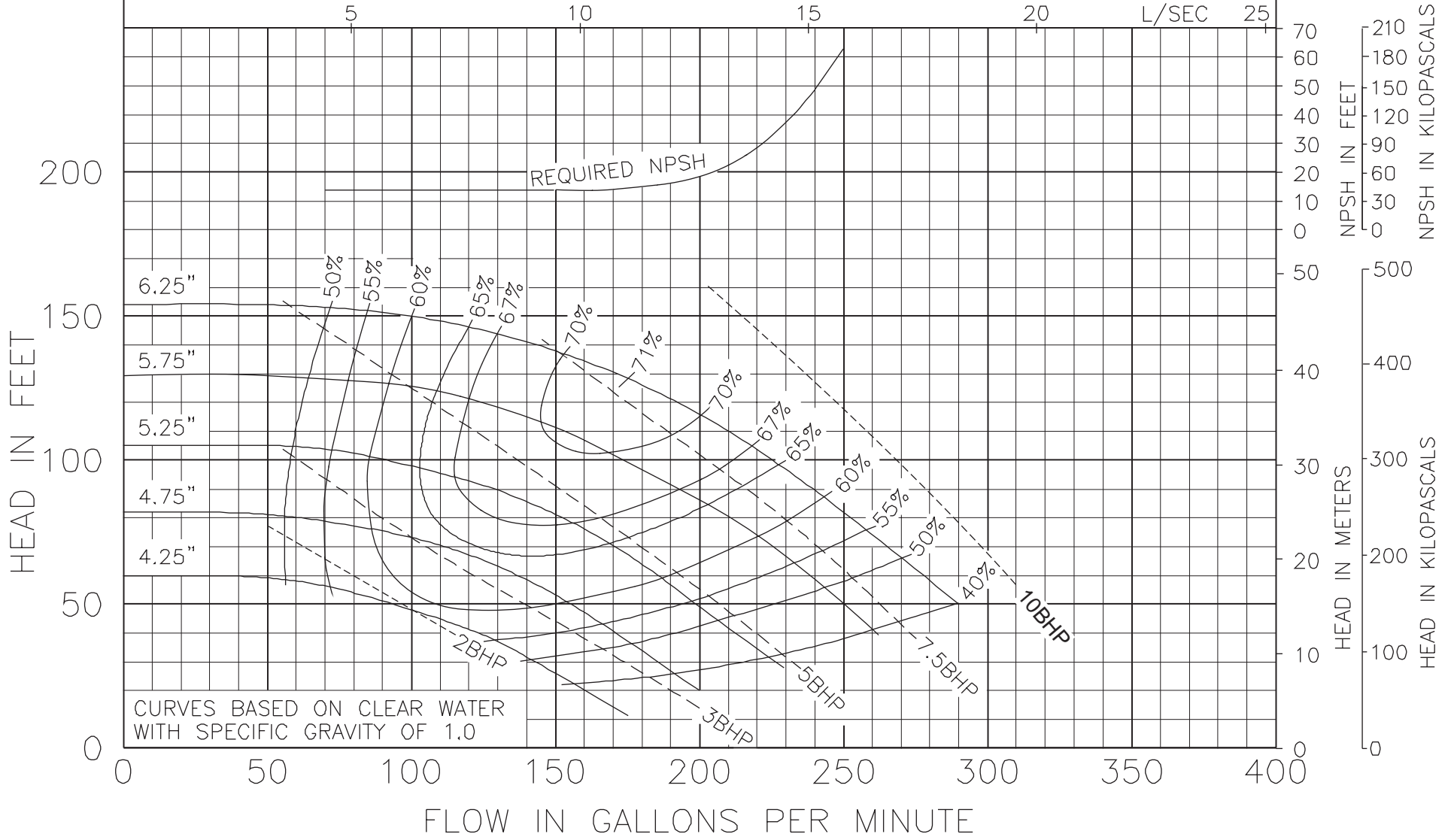




Model 2006  
KV & KS Series

3500 RPM  
October 23, 2000

Curve no. 1941  
Min. Imp. Dia. 4.25  
Size 2 x 2 x 6

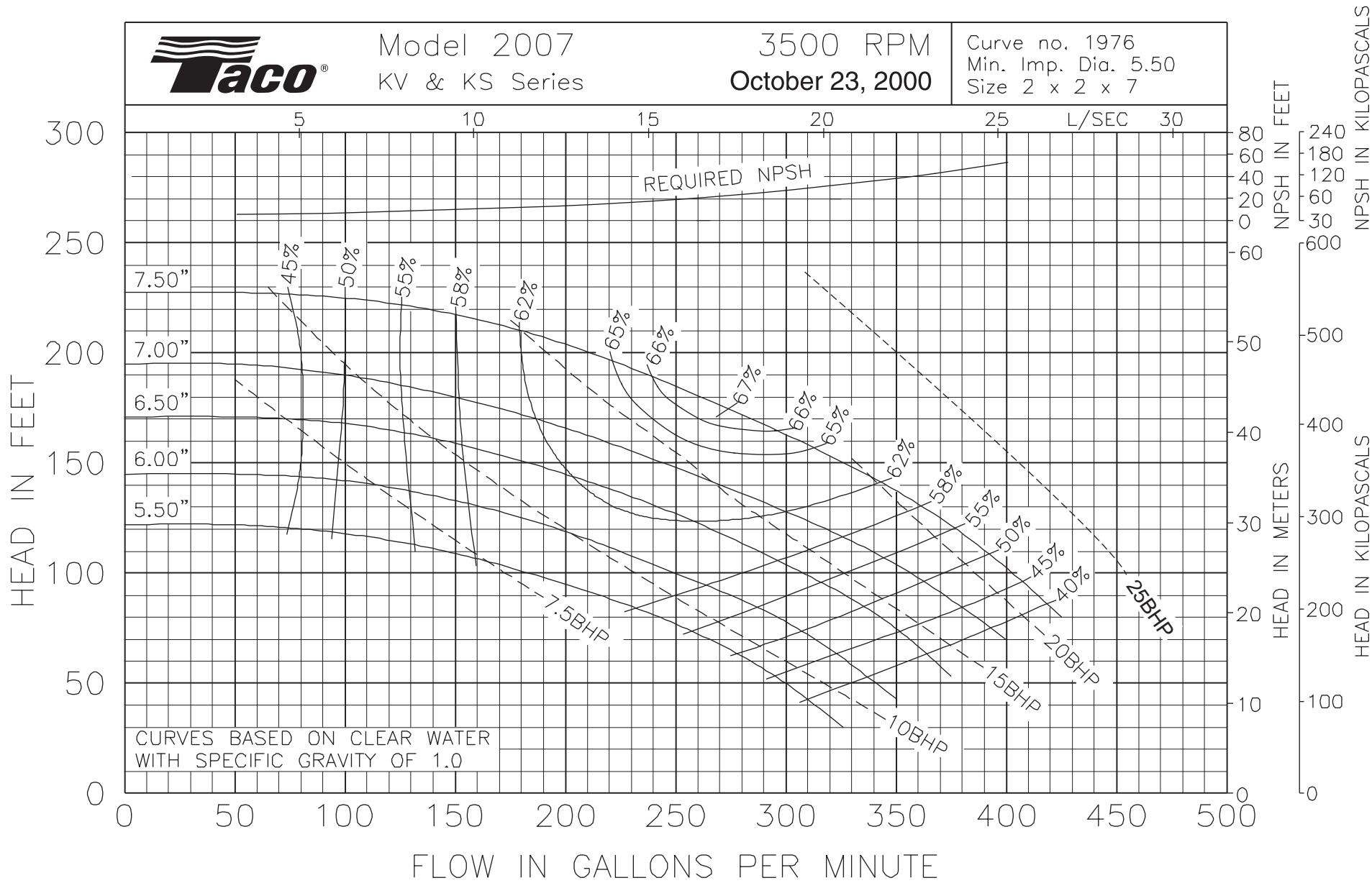


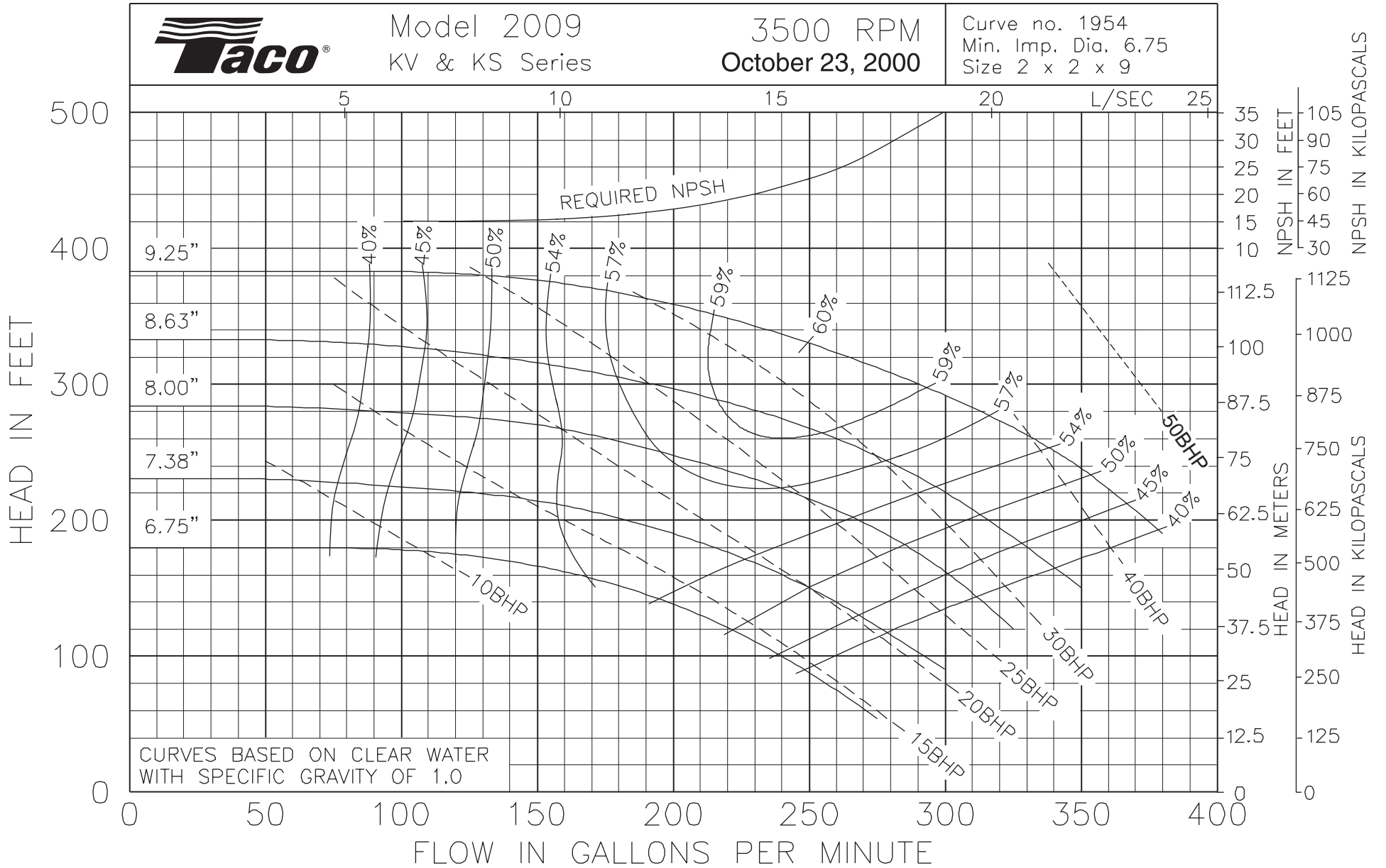


Model 2007  
KV & KS Series

3500 RPM  
October 23, 2000

Curve no. 1976  
Min. Imp. Dia. 5.50  
Size 2 x 2 x 7



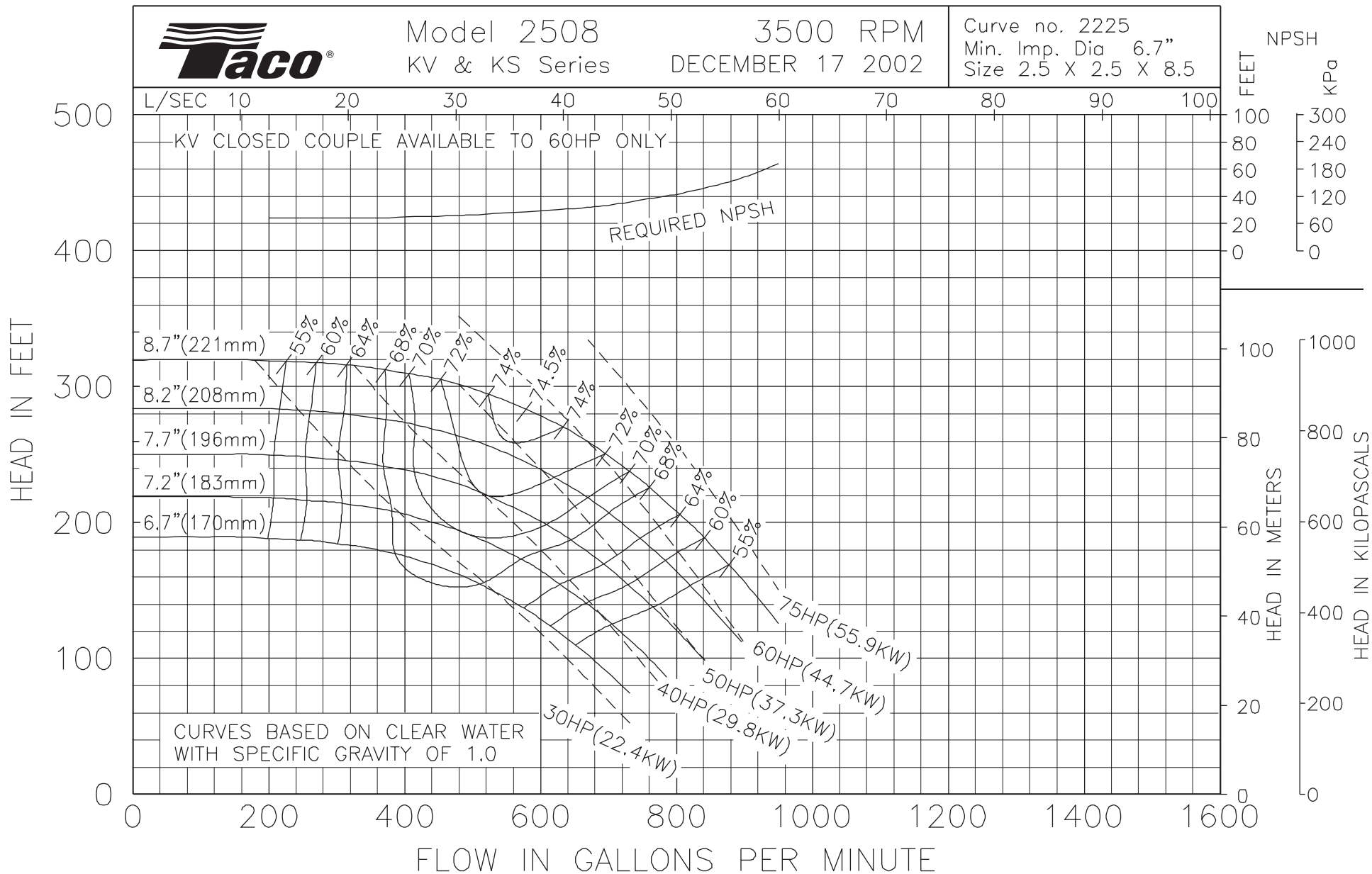




Model 2508  
KV & KS Series

3500 RPM  
DECEMBER 17 2002

Curve no. 2225  
Min. Imp. Dia 6.7"  
Size 2.5 X 2.5 X 8.5

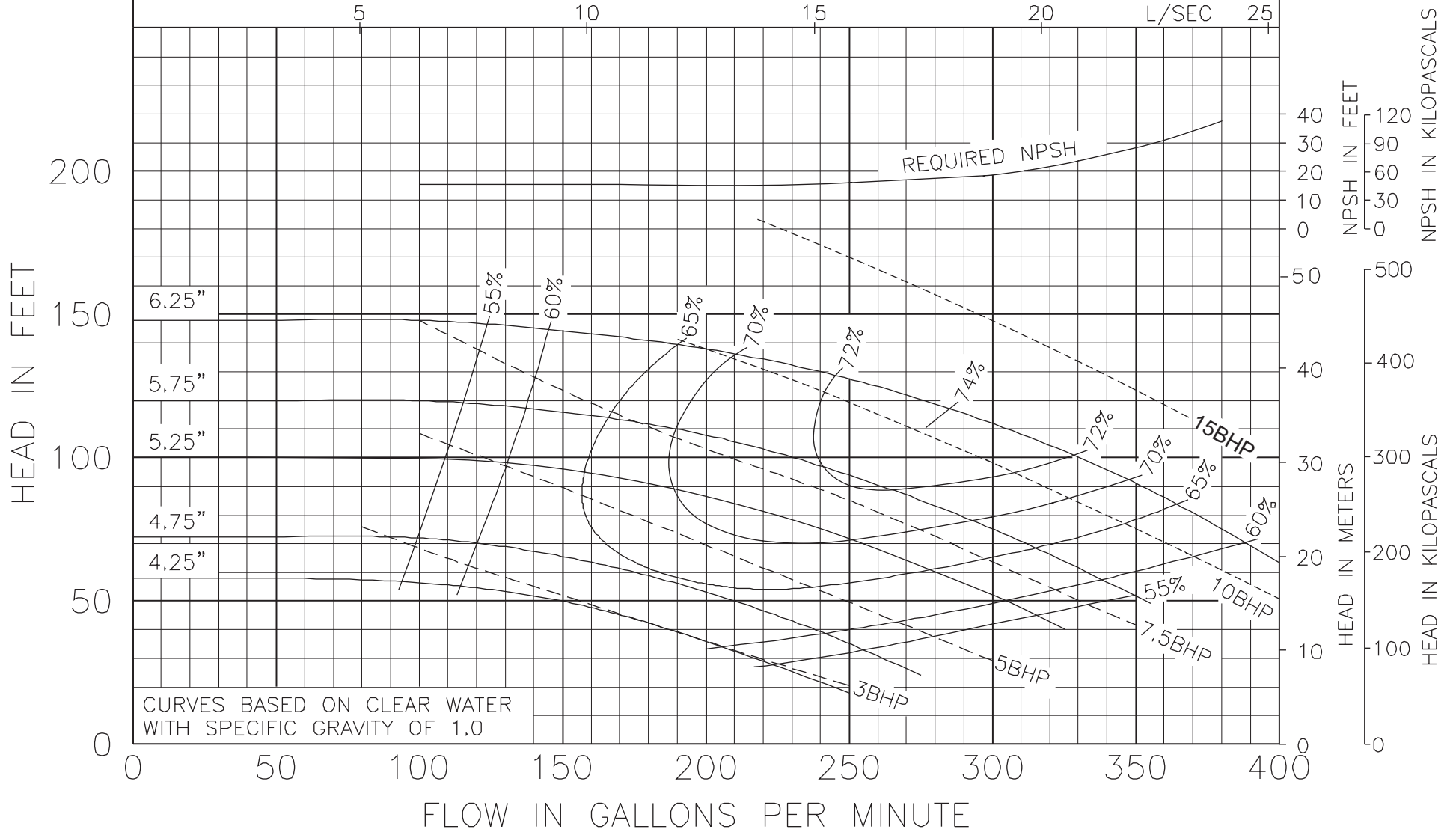




Model 3006  
KV & KS Series

3500 RPM  
October 23, 2000

Curve no. 1965  
Min. Imp. Dia. 4.25  
Size 3 x 3 x 6



CURVES BASED ON CLEAR WATER  
WITH SPECIFIC GRAVITY OF 1.0

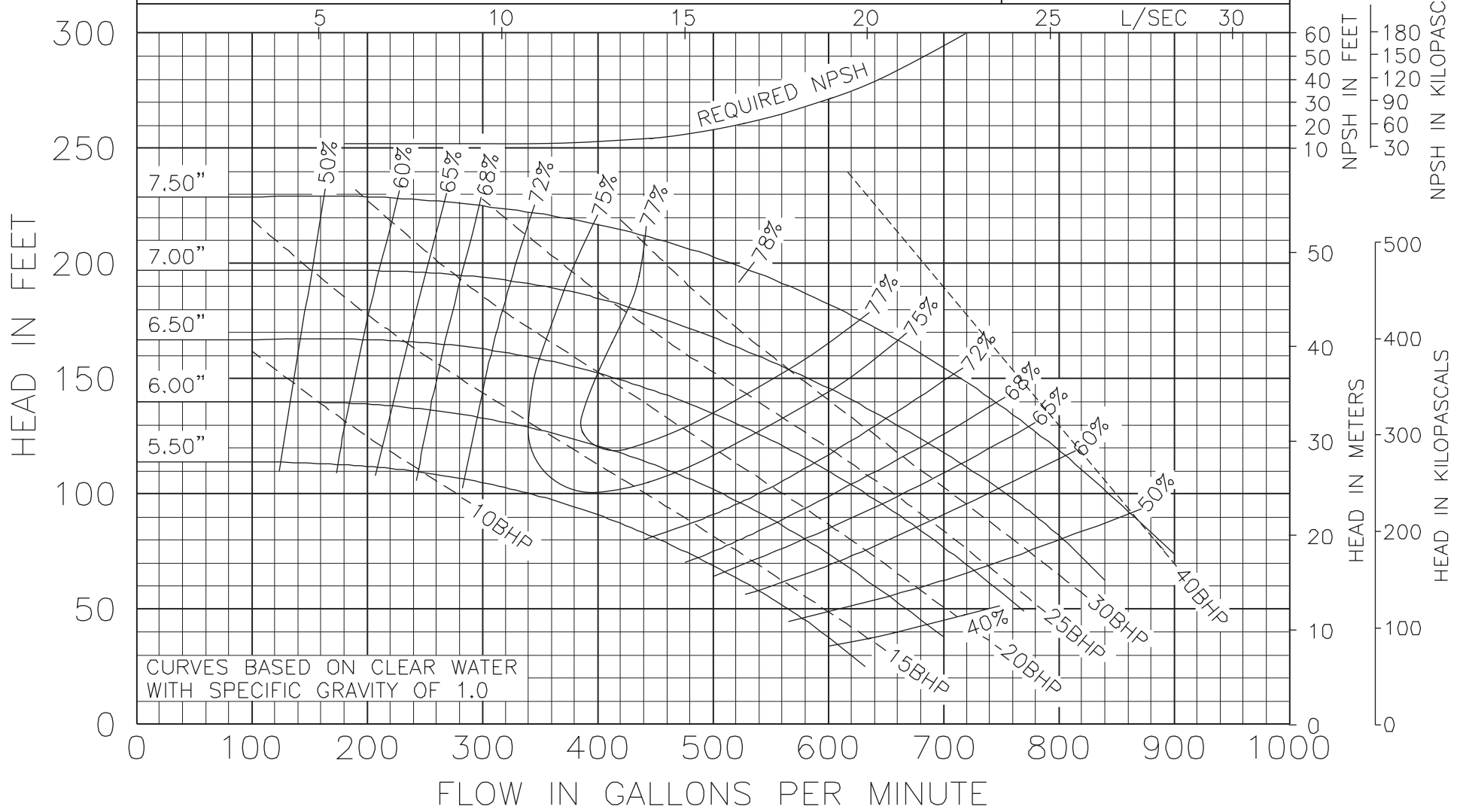




Model 3007  
KV & KS Series

3500 RPM  
October 23, 2000

Curve no. 1968  
Min. Imp. Dia. 5.50  
Size 3 x 3 x 7

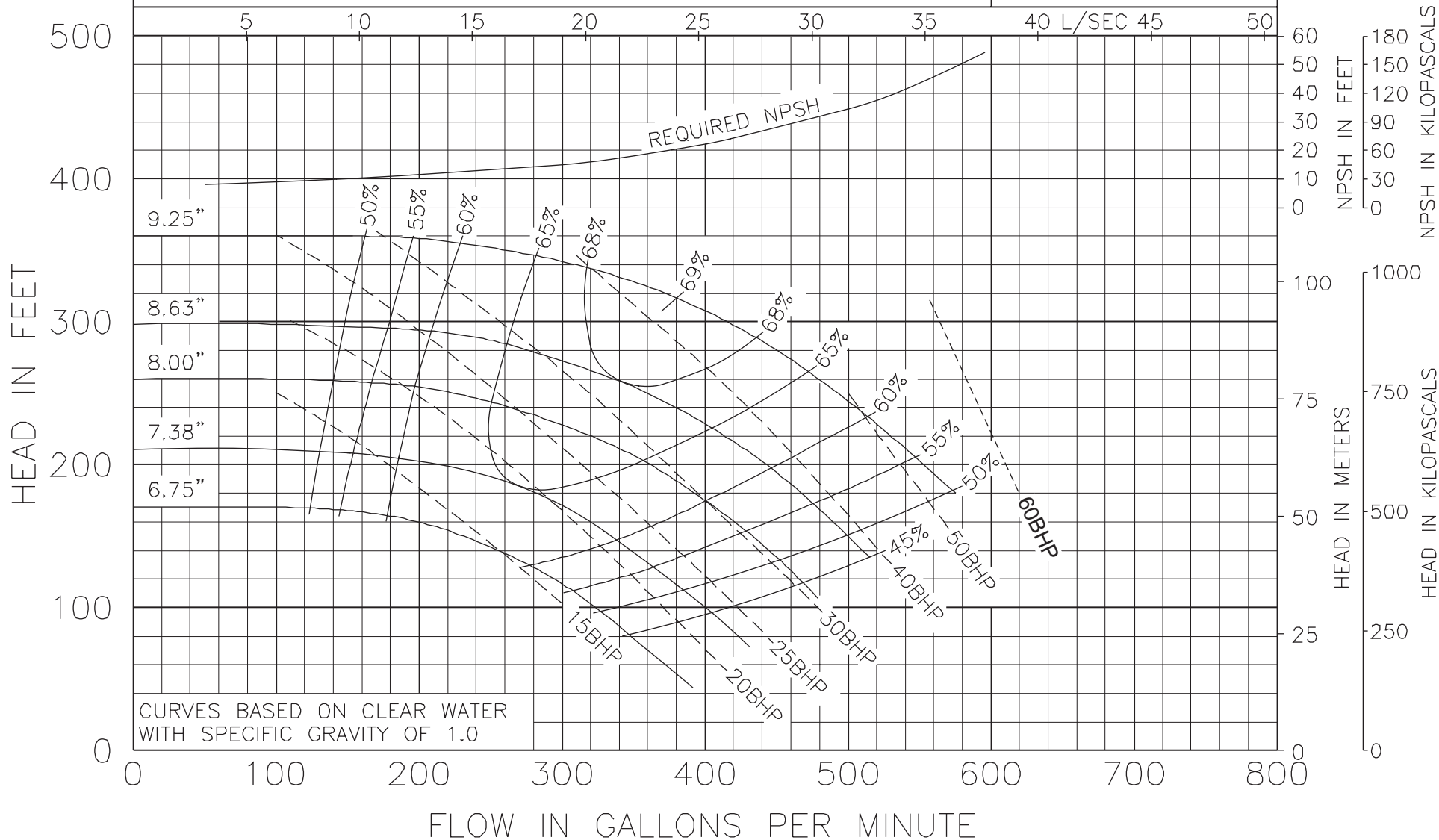




Model 3009  
KV & KS Series

3500 RPM  
October 23, 2000

Curve no. 1961  
Min. Imp. Dia. 6.75  
Size 3 x 3 x 9

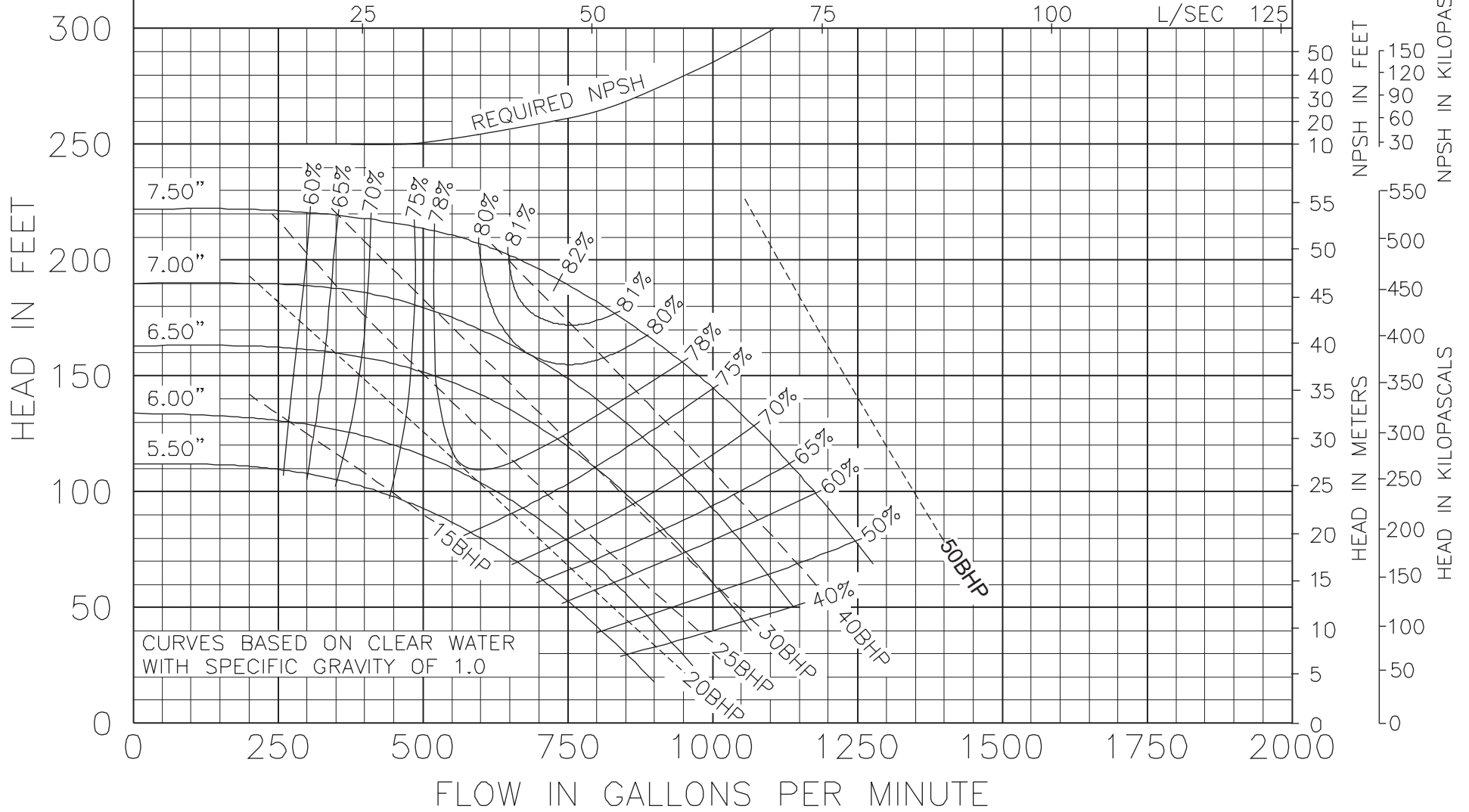




Model 4007  
KV & KS Series

3500 RPM  
October 23, 2000

Curve no. 1944  
Min. Imp. Dia. 5.50  
Size 4 x 4 x 7

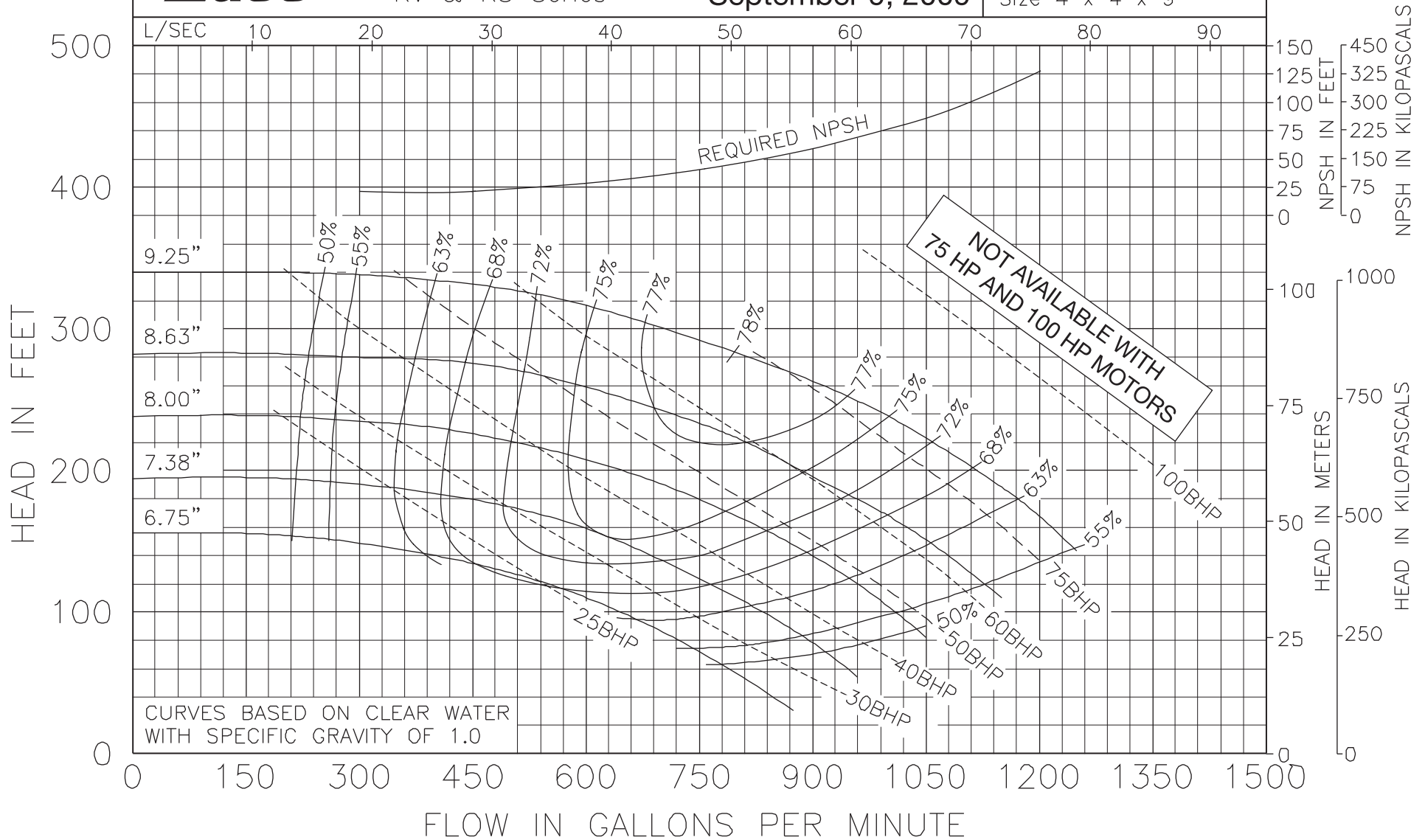




Model 4009  
KV & KS Series

3500 RPM  
September 9, 2009

Curve no. 1980  
Min. Imp. Dia. 6.75  
Size 4 x 4 x 9



CURVES BASED ON CLEAR WATER  
WITH SPECIFIC GRAVITY OF 1.0

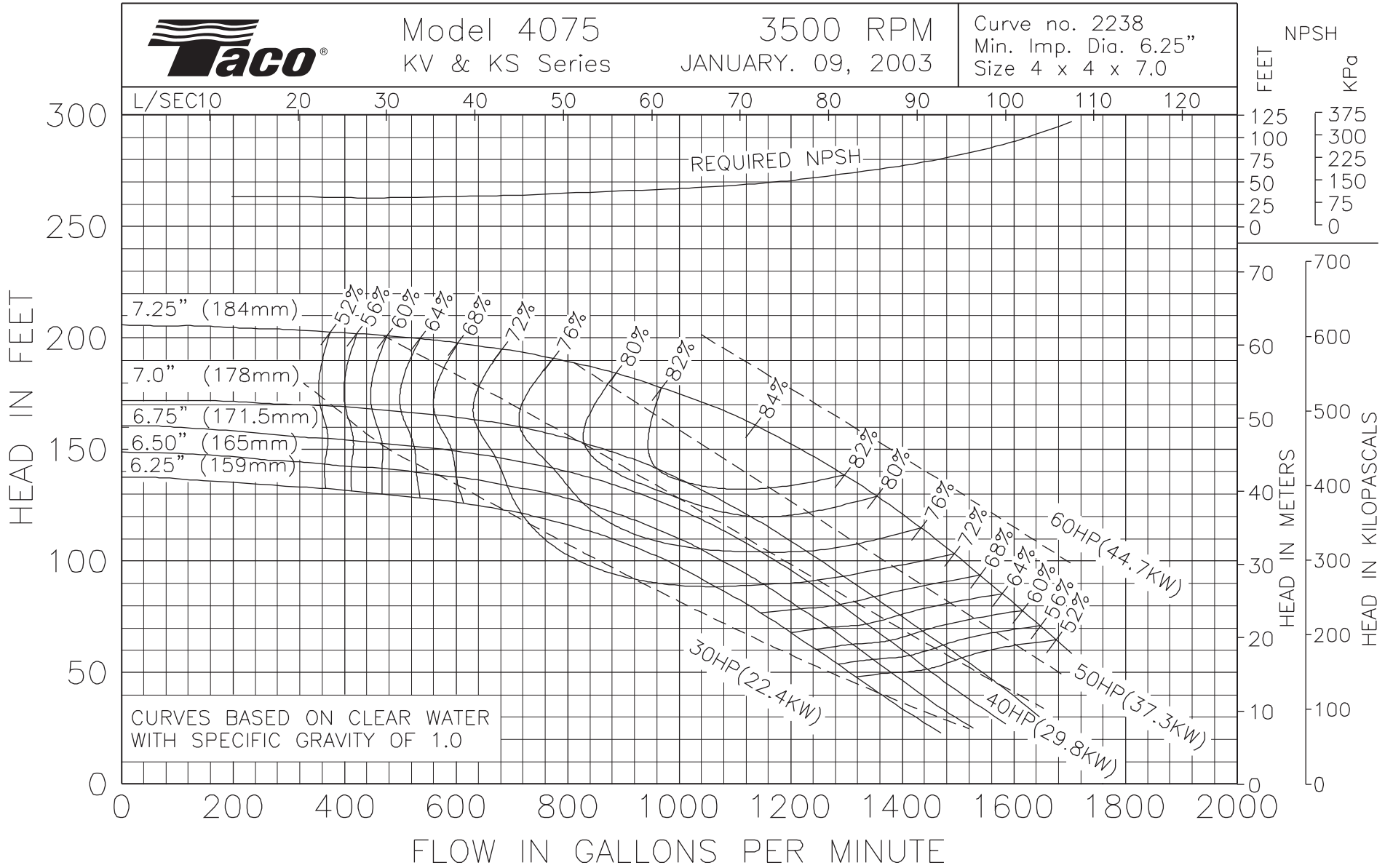
NOT AVAILABLE WITH  
75 HP AND 100 HP MOTORS



Model 4075  
KV & KS Series

3500 RPM  
JANUARY. 09, 2003

Curve no. 2238  
Min. Imp. Dia. 6.25"  
Size 4 x 4 x 7.0

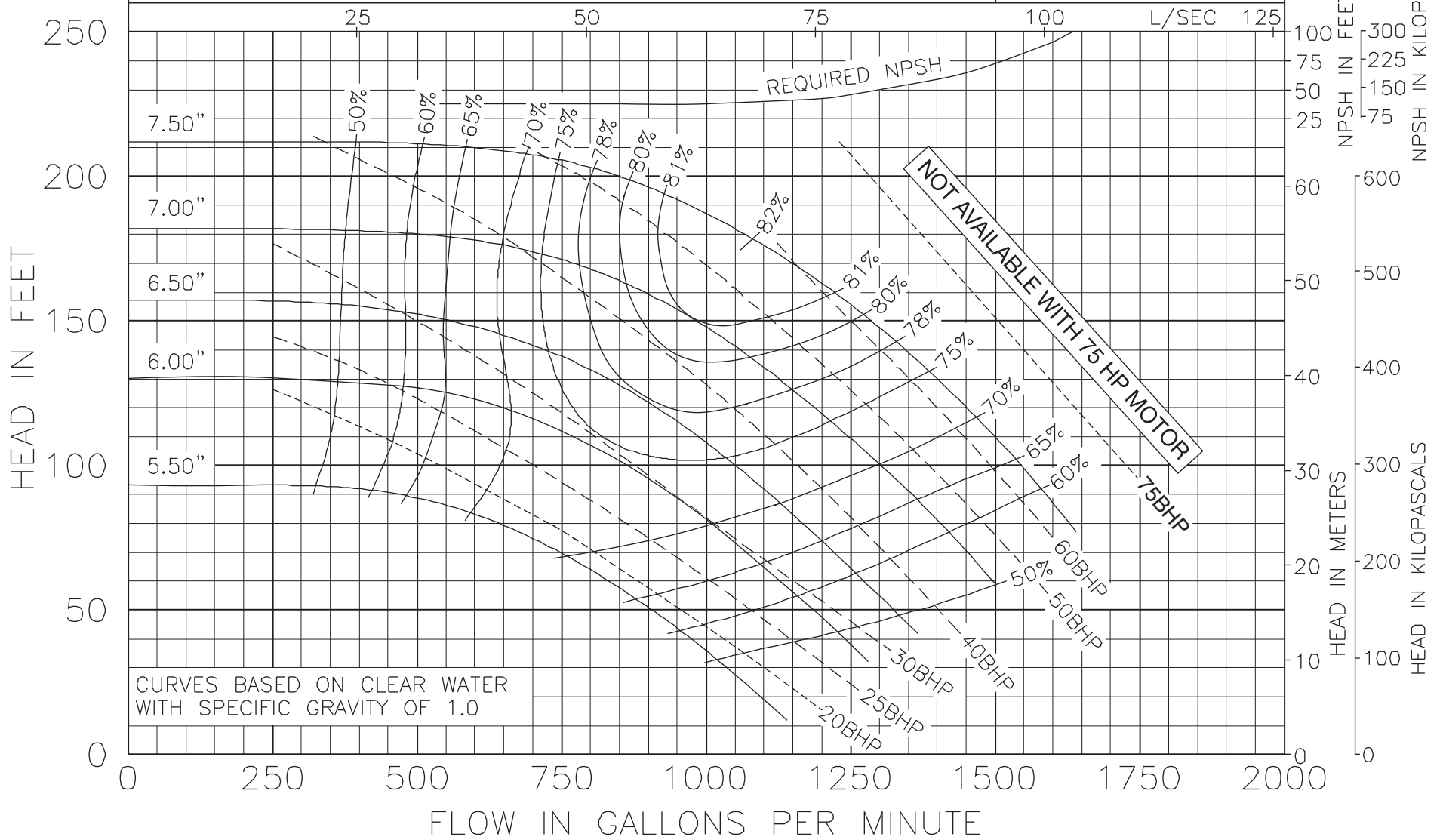




Model 5007  
KV & KS Series

3500 RPM  
September 9, 2009

Curve no. 1949  
Min. Imp. Dia. 5.50  
Size 5 x 5 x 7



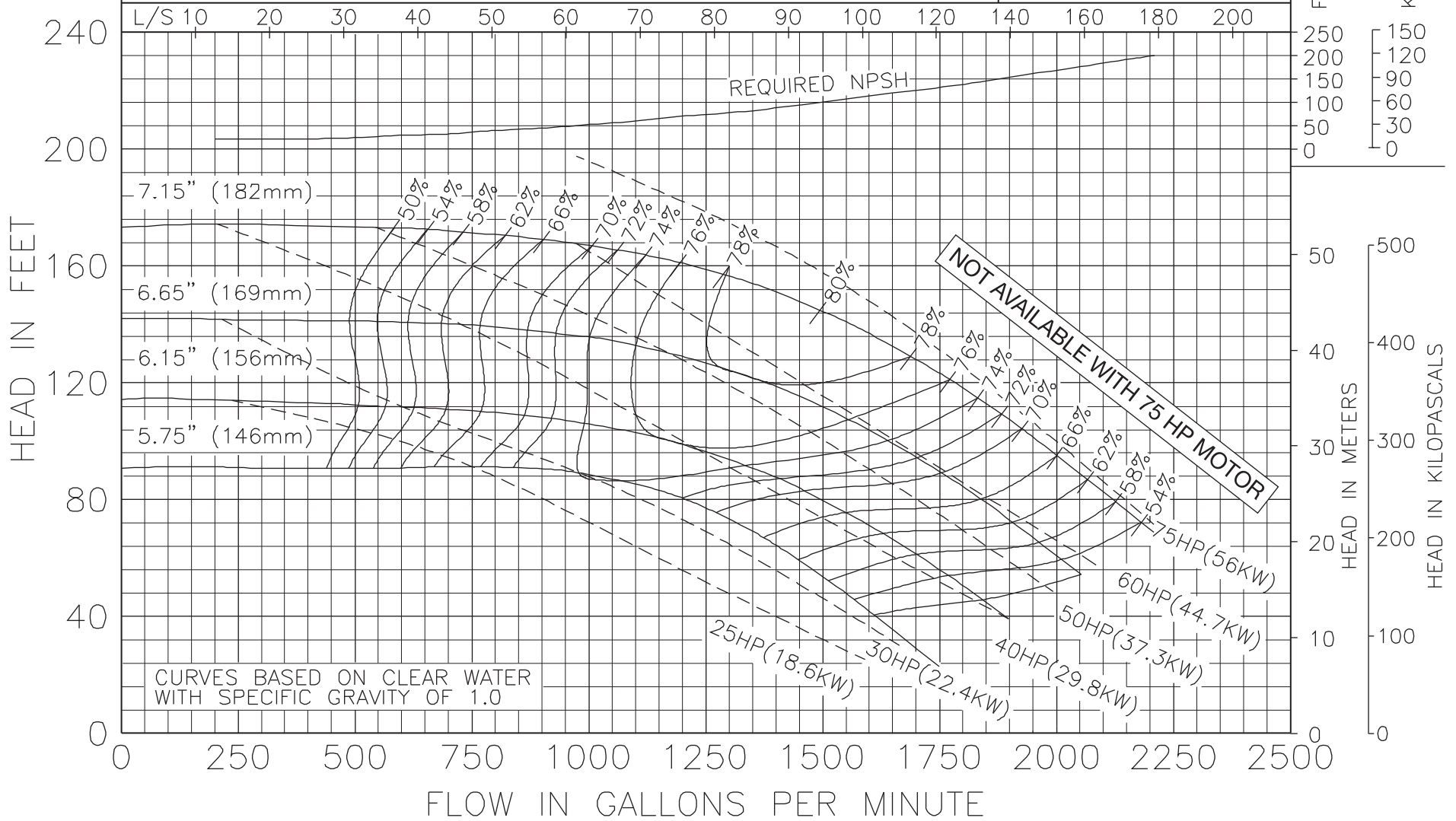
CURVES BASED ON CLEAR WATER  
WITH SPECIFIC GRAVITY OF 1.0



Model 5075  
KV & KS Series

3500 RPM  
September 9, 2009

Curve no. 2243  
Min. Imp. Dia. 5.75"  
Size 5 x 5 x 7.0



CURVES BASED ON CLEAR WATER  
WITH SPECIFIC GRAVITY OF 1.0

NOT AVAILABLE WITH 75 HP MOTOR