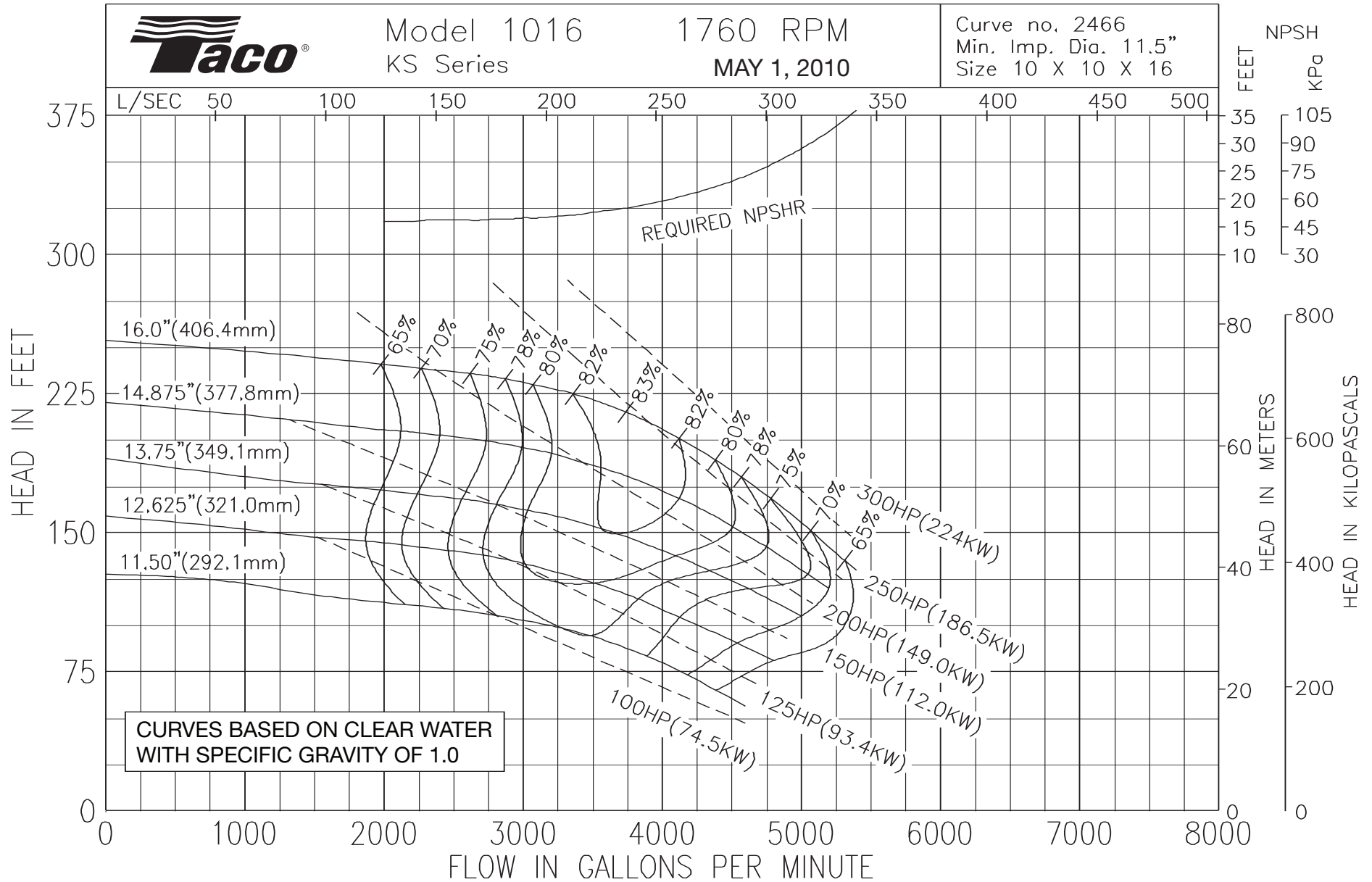




Model 1016  
KS Series

1760 RPM  
MAY 1, 2010

Curve no. 2466  
Min. Imp. Dia. 11.5"  
Size 10 X 10 X 16

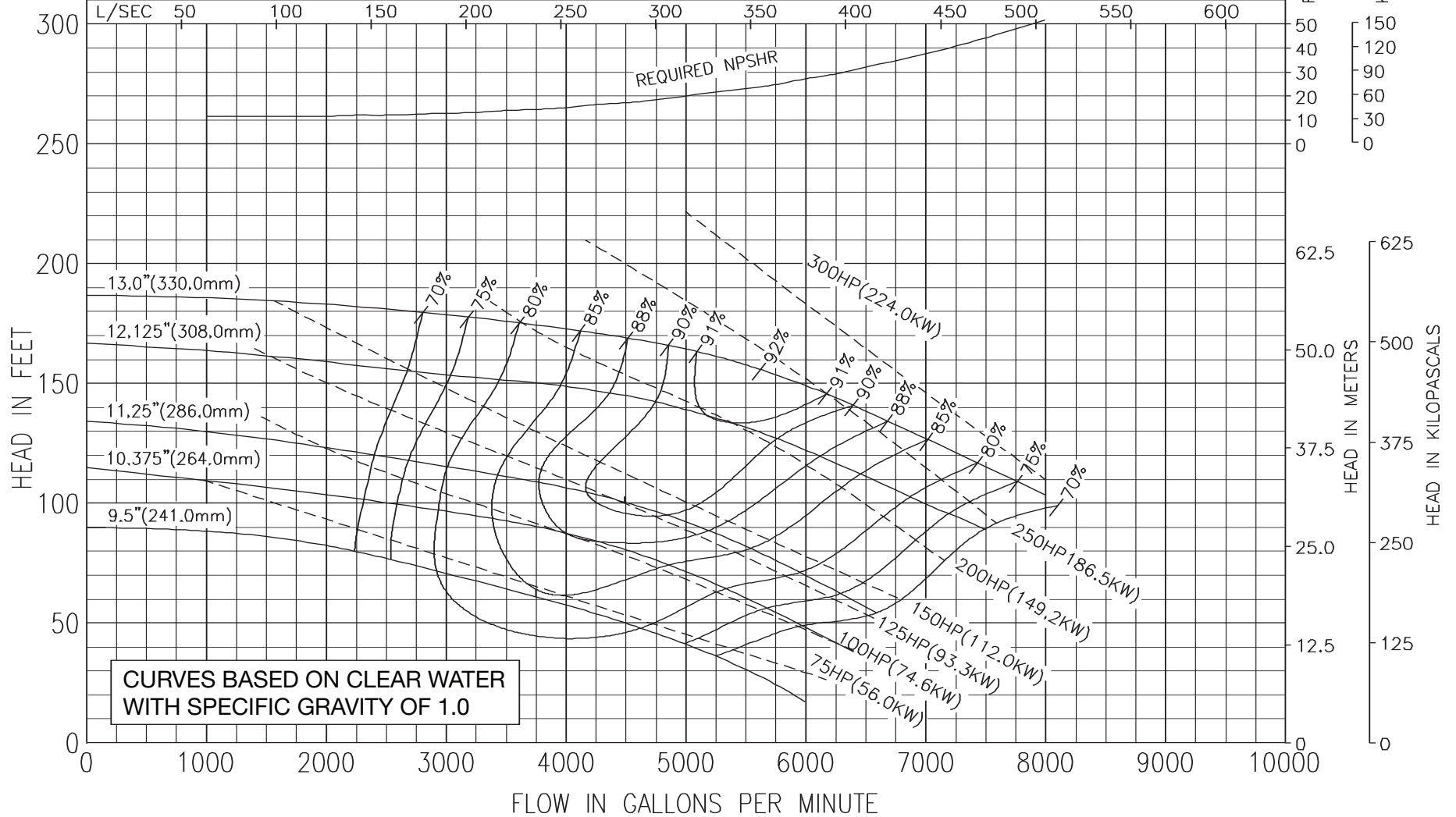




Model 1213B  
KS Series

1760 RPM  
MAY 1, 2010

Curve no. 2437  
Min. Imp. Dia. 9.5"  
Size 12 X 12 X 13

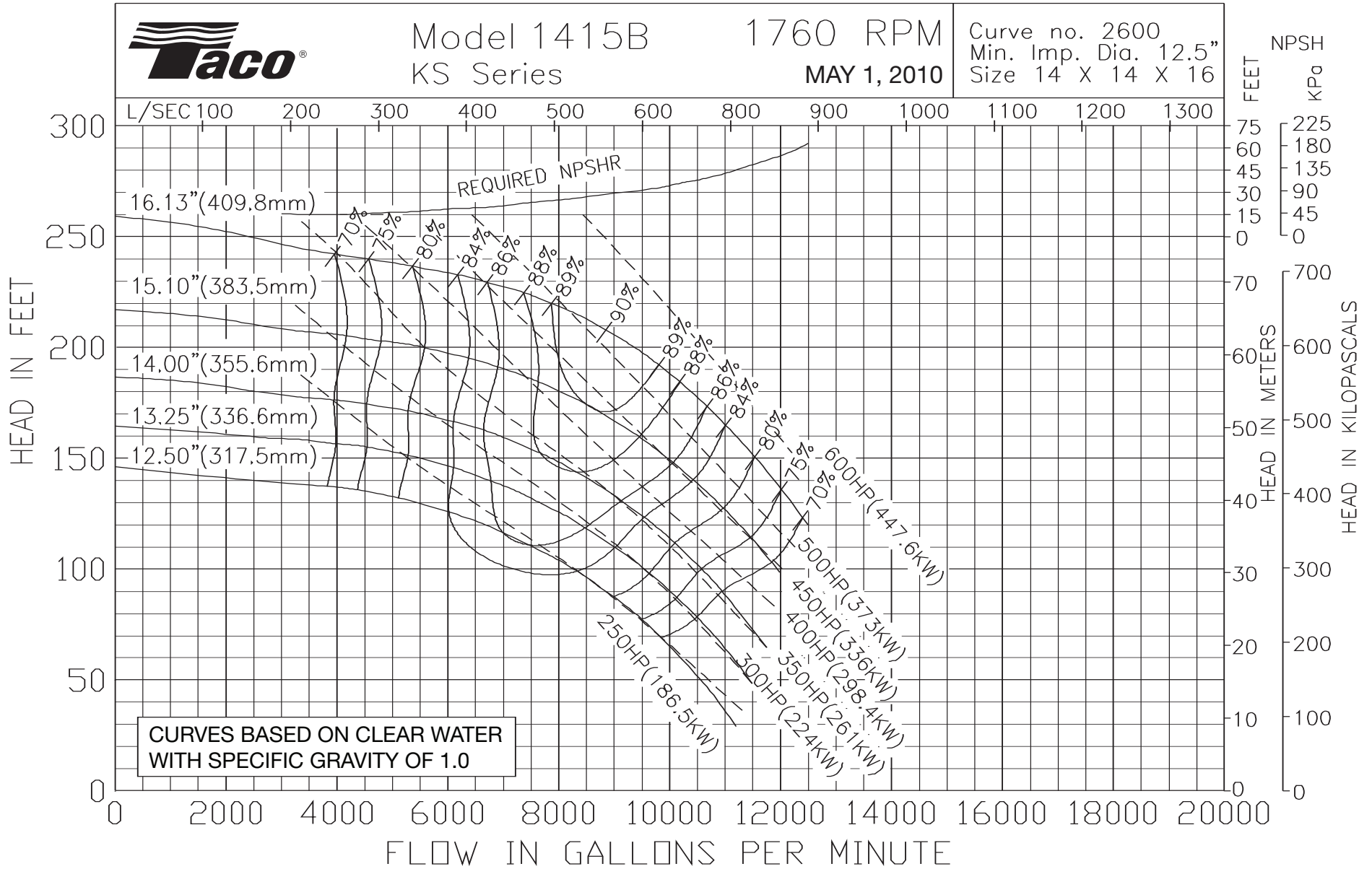




Model 1415B  
KS Series

1760 RPM  
MAY 1, 2010

Curve no. 2600  
Min. Imp. Dia. 12.5"  
Size 14 X 14 X 16

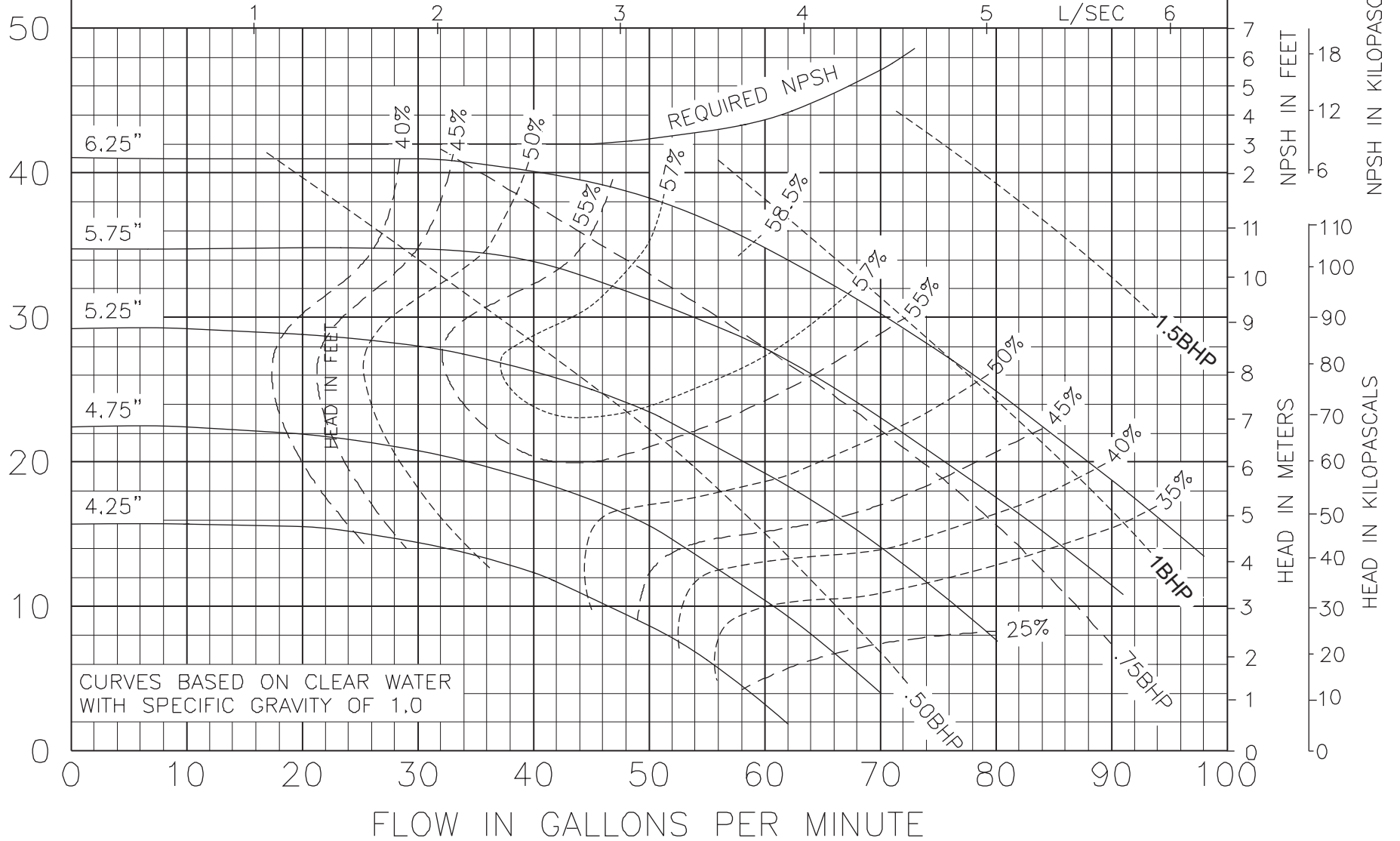




Model 1506  
KV & KS Series

1760 RPM  
October 23, 2000

Curve no. 1937  
Min. Imp. Dia. 4.25  
Size 1 1/2 x 1 1/2 x 6

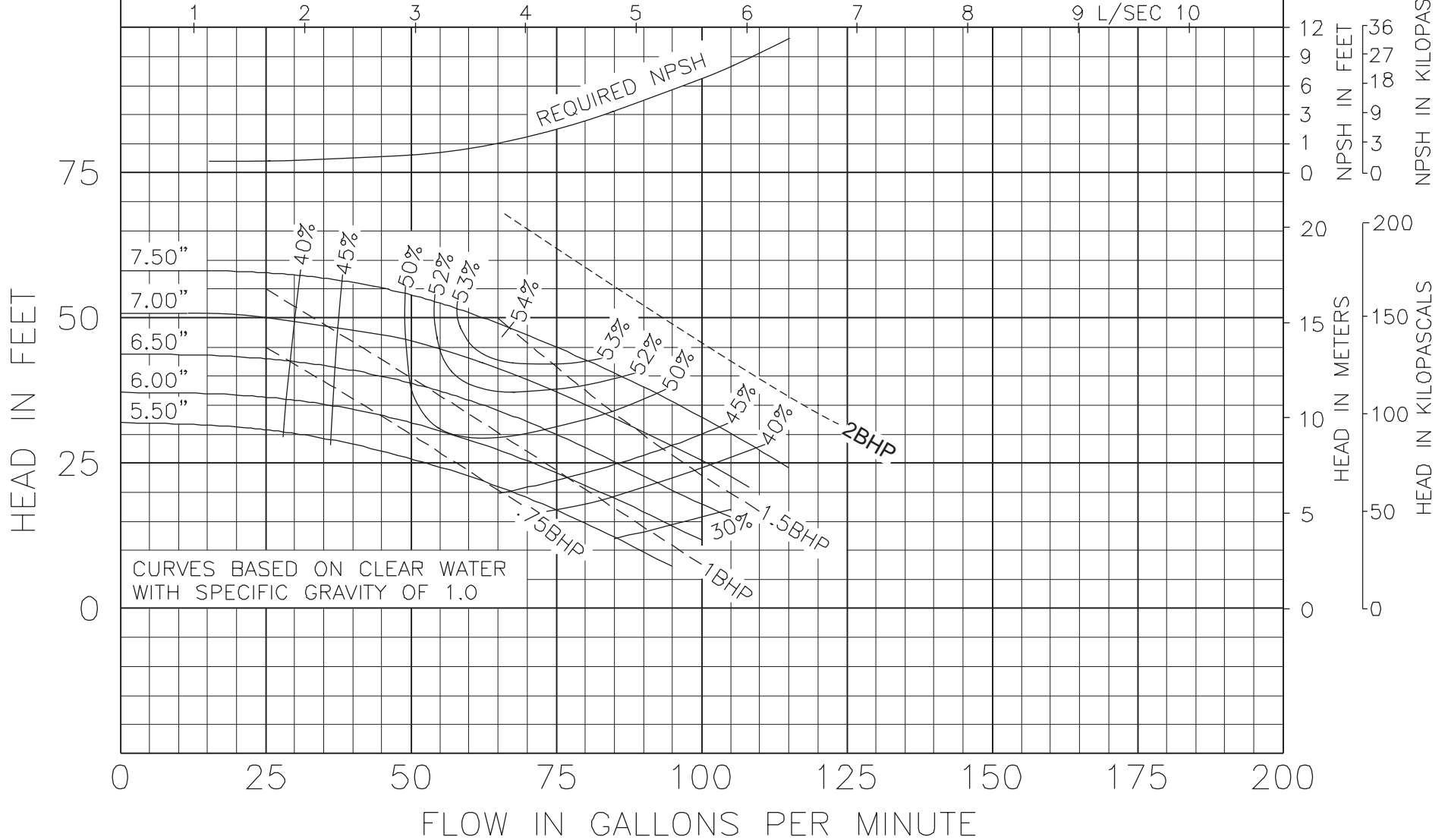




Model 1507  
KV & KS Series

1760 RPM  
October 23, 2000

Curve no. 1973  
Min. Imp. Dia. 5.50  
Size 1 1/2 x 1 1/2 x 7

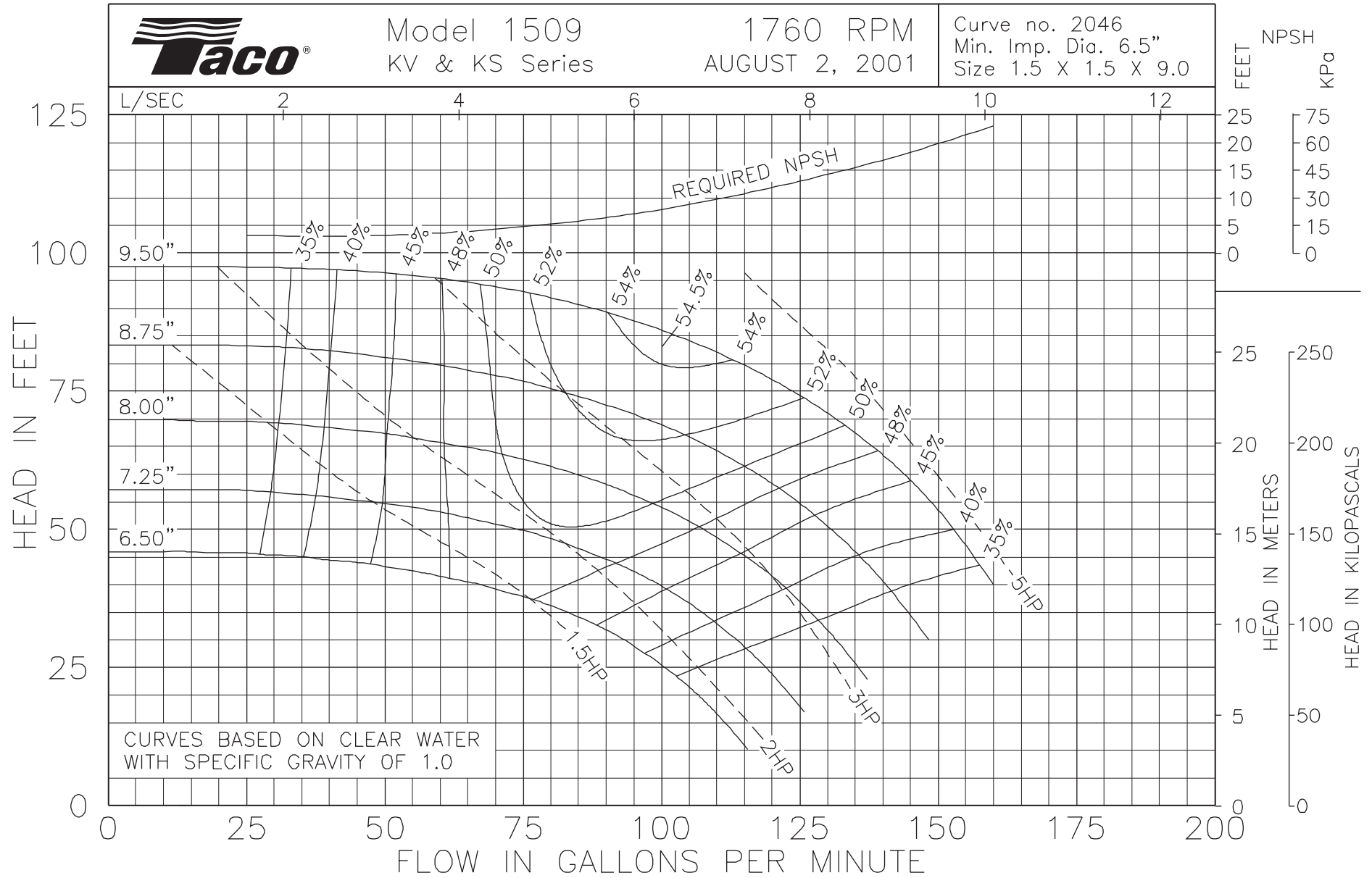




Model 1509  
KV & KS Series

1760 RPM  
AUGUST 2, 2001

Curve no. 2046  
Min. Imp. Dia. 6.5"  
Size 1.5 X 1.5 X 9.0

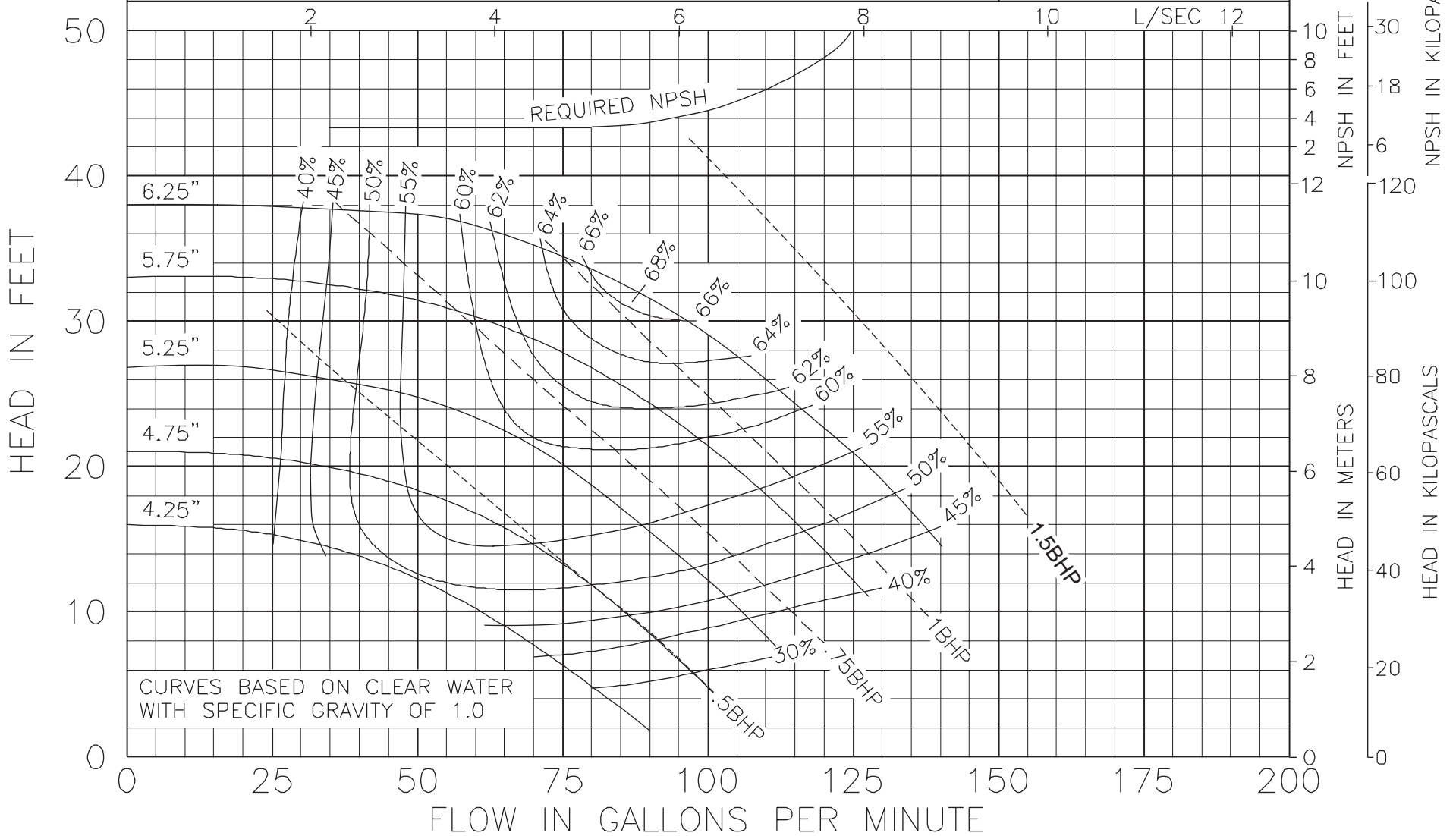




Model 2006  
KV & KS Series

1760 RPM  
October 23, 2000

Curve no. 1940  
Min. Imp. Dia. 4.25  
Size 2 x 2 x 6

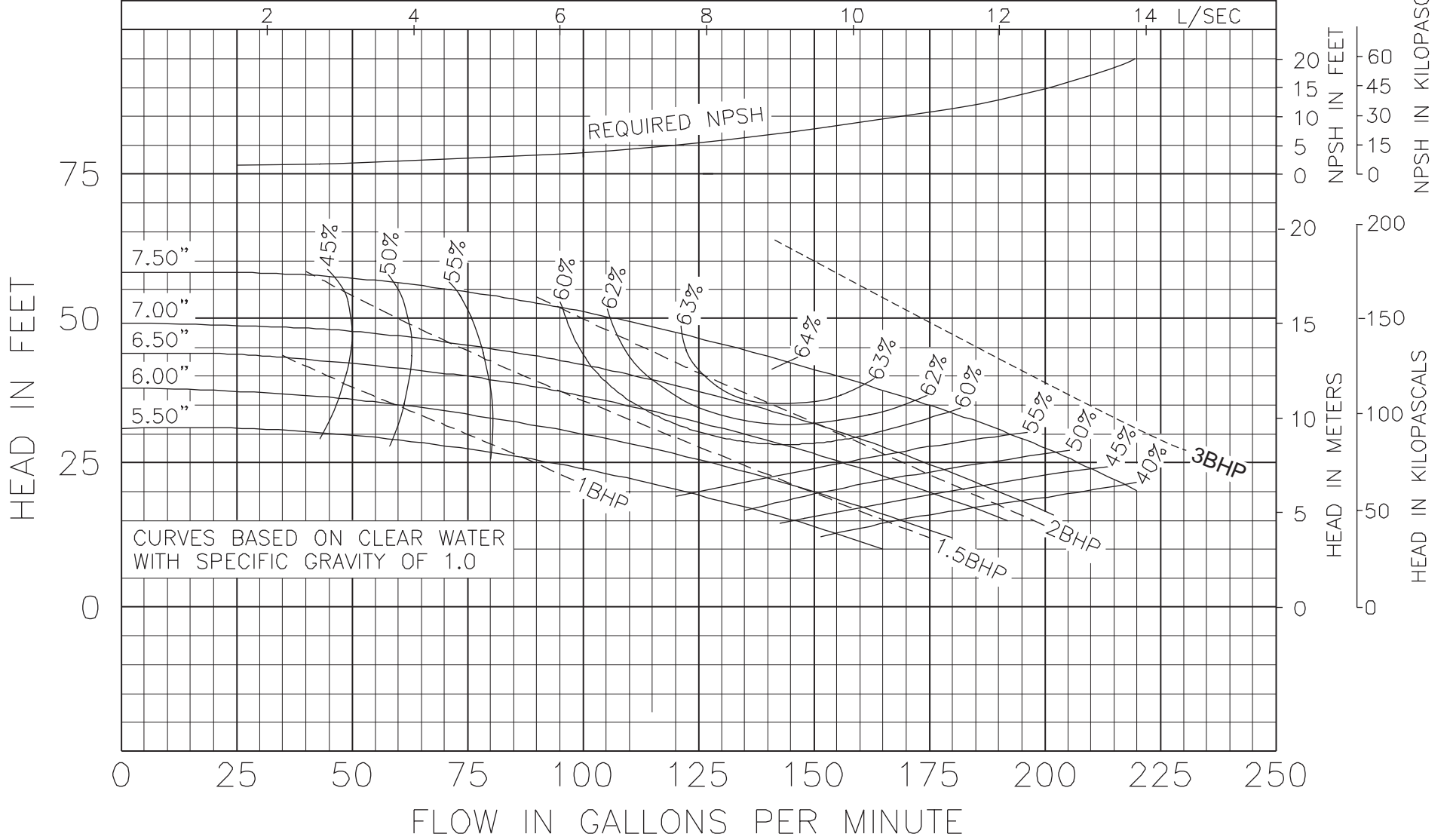




Model 2007  
KV & KS Series

1760 RPM  
October 23, 2000

Curve no. 1977  
Min. Imp. Dia. 5.50  
Size 2 x 2 x 7



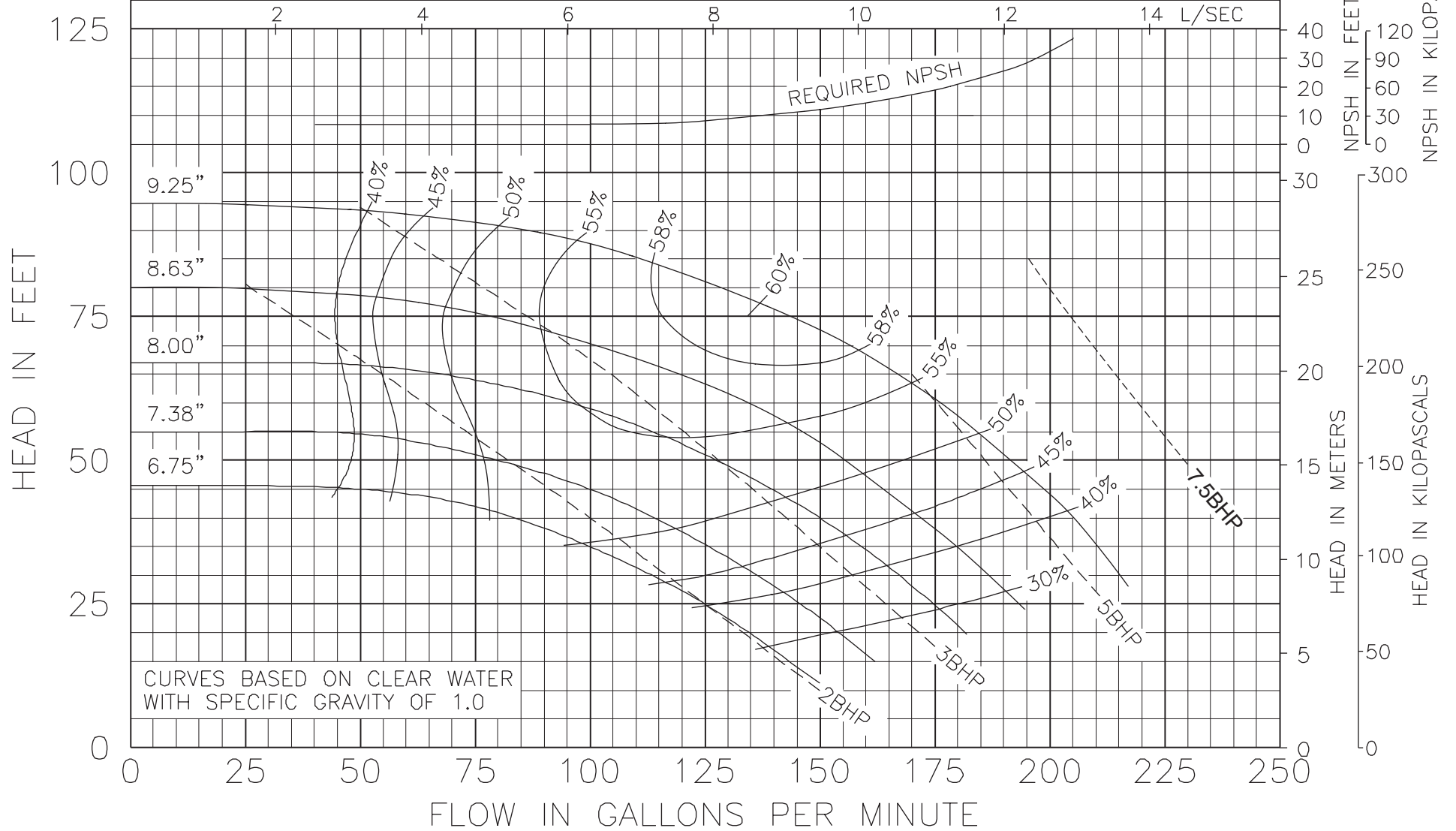




Model 2009  
KV & KS Series

1760 RPM  
October 23, 2000

Curve no. 1955  
Min. Imp. Dia. 6.75  
Size 2 x 2 x 9

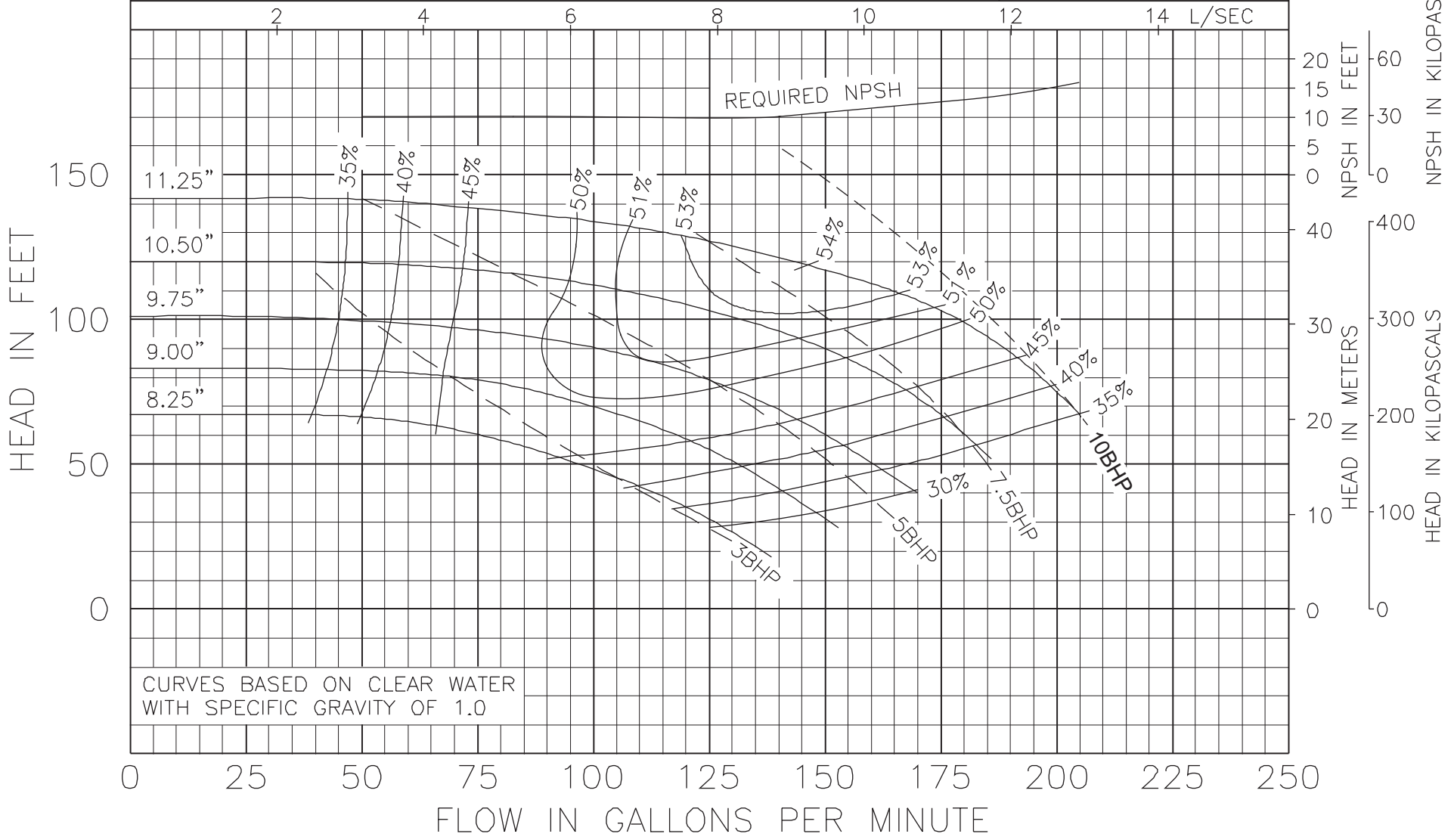




Model 2011  
KV & KS Series

1760 RPM  
October 23, 2000

Curve no. 1929  
Min. Imp. Dia. 8.25  
Size 2 x 2 x 11

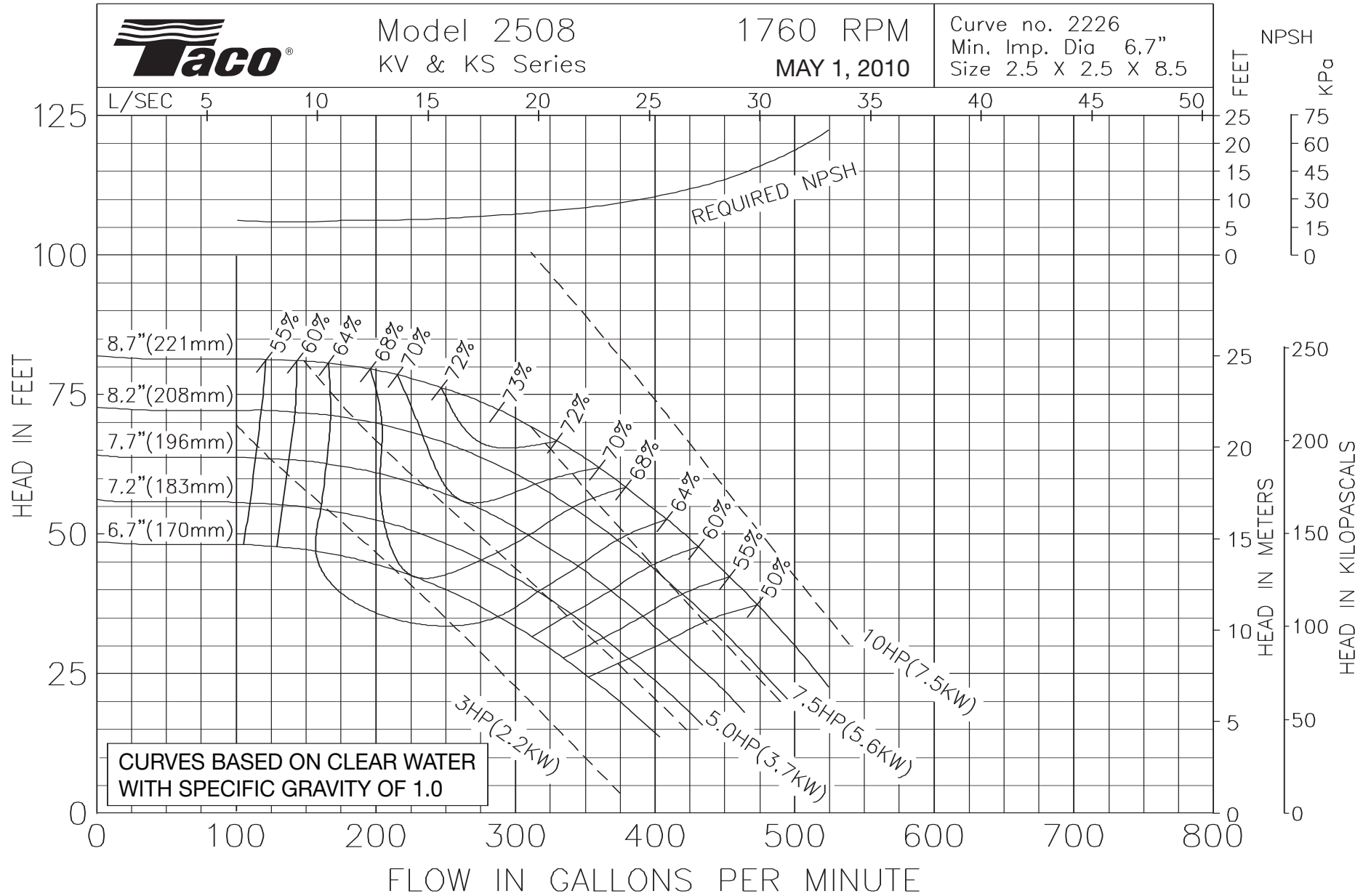




Model 2508  
KV & KS Series

1760 RPM  
MAY 1, 2010

Curve no. 2226  
Min. Imp. Dia 6.7"  
Size 2.5 X 2.5 X 8.5

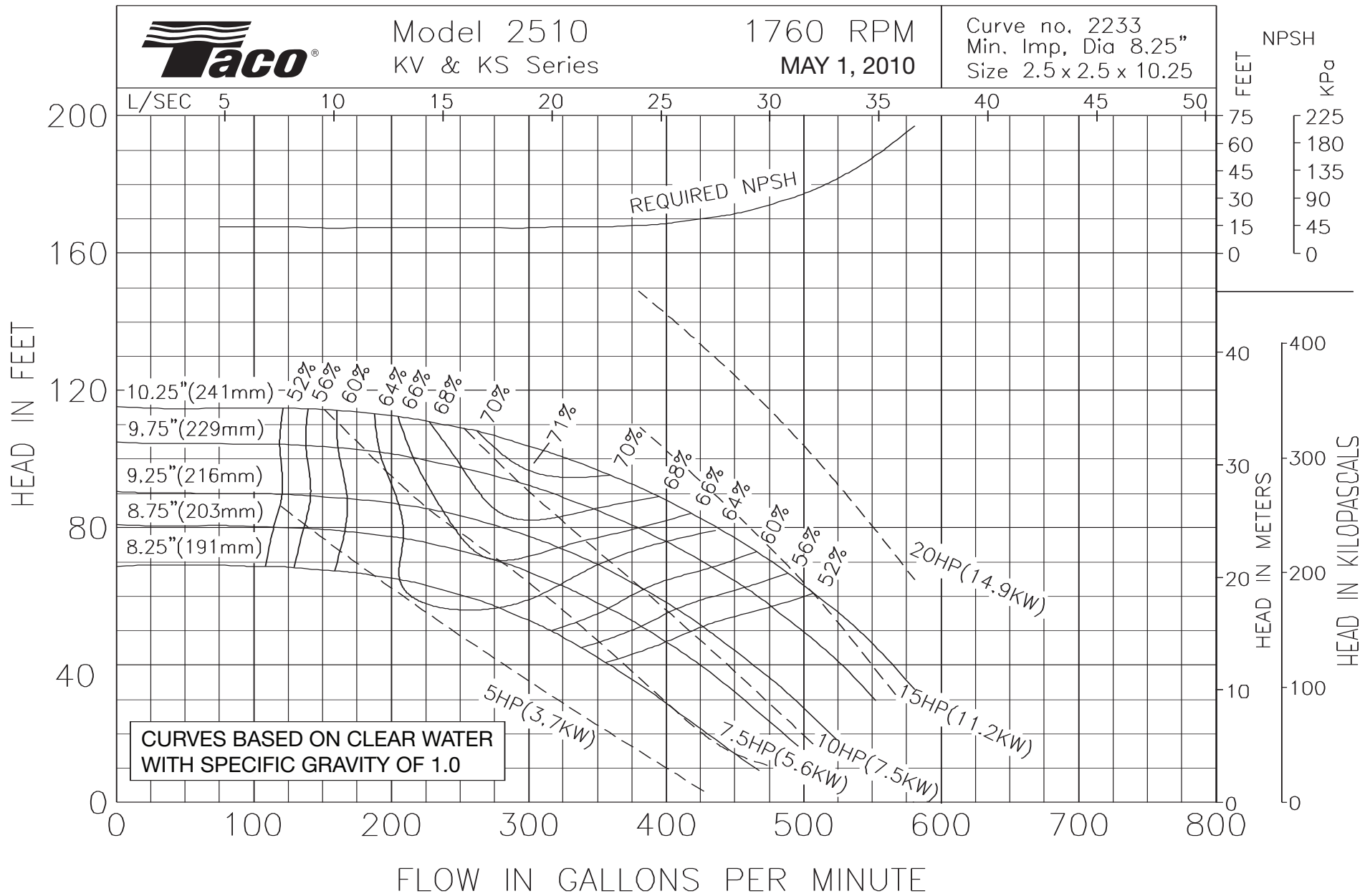


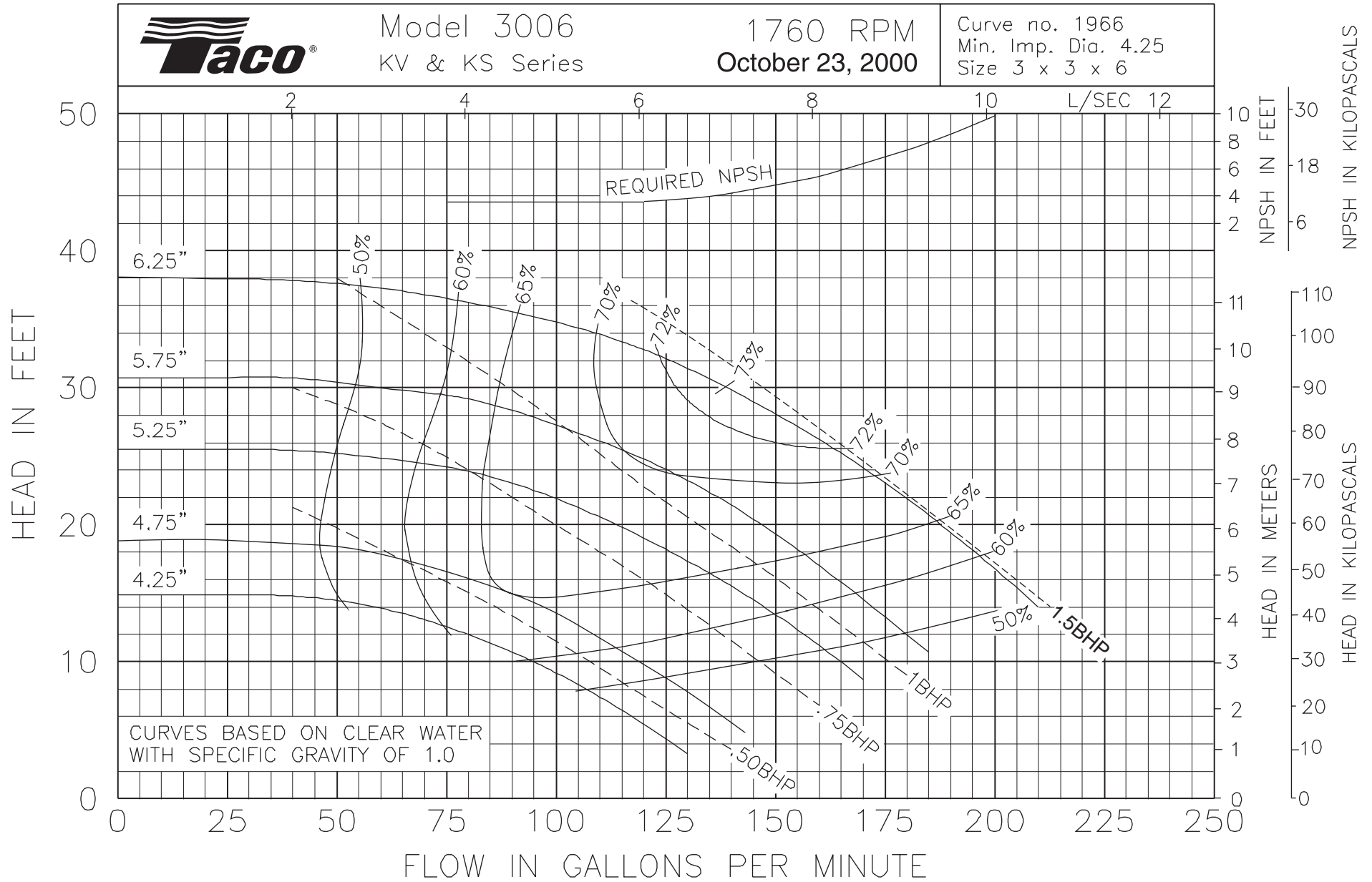


Model 2510  
KV & KS Series

1760 RPM  
MAY 1, 2010

Curve no. 2233  
Min. Imp. Dia 8.25"  
Size 2.5 x 2.5 x 10.25



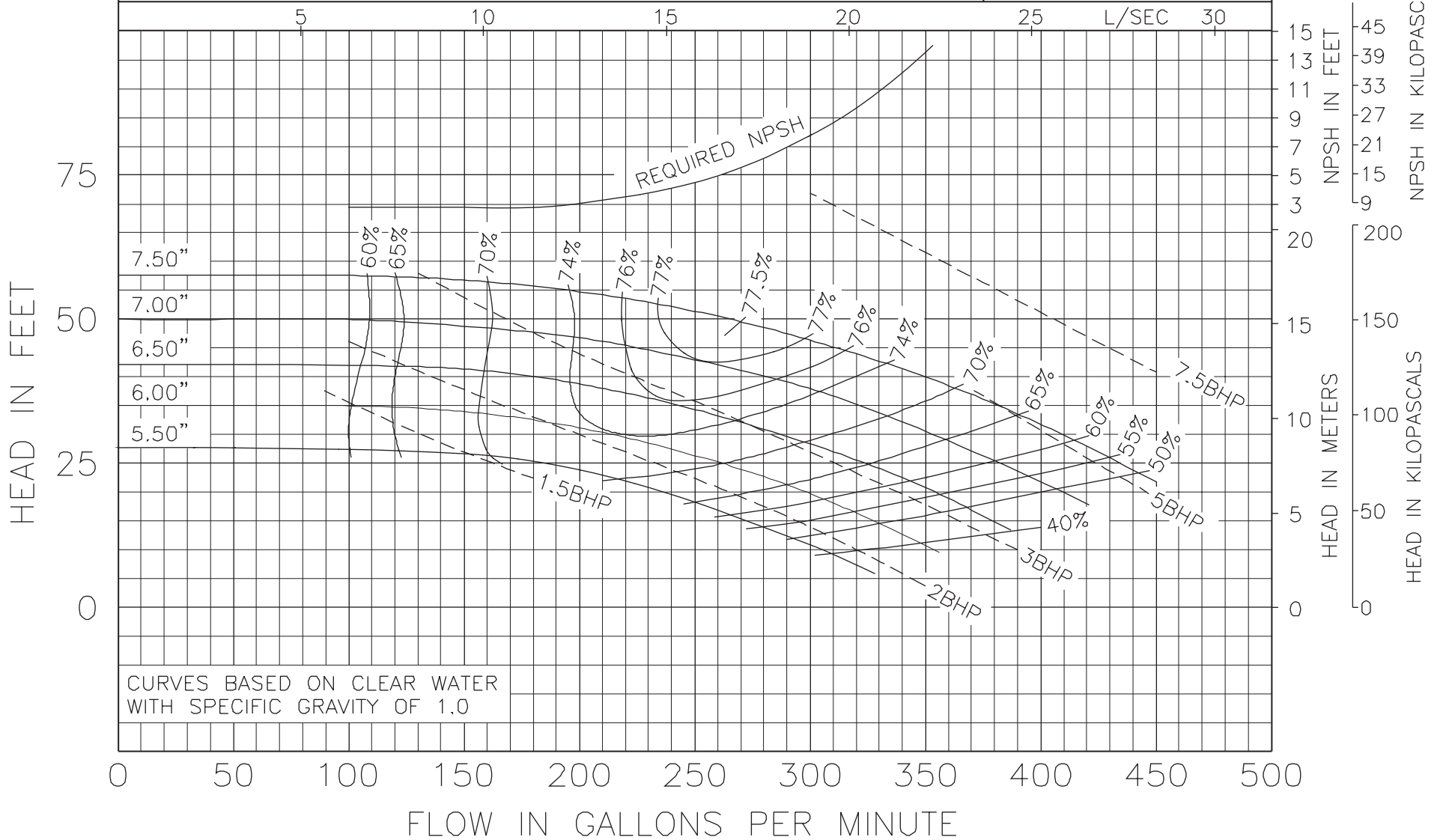


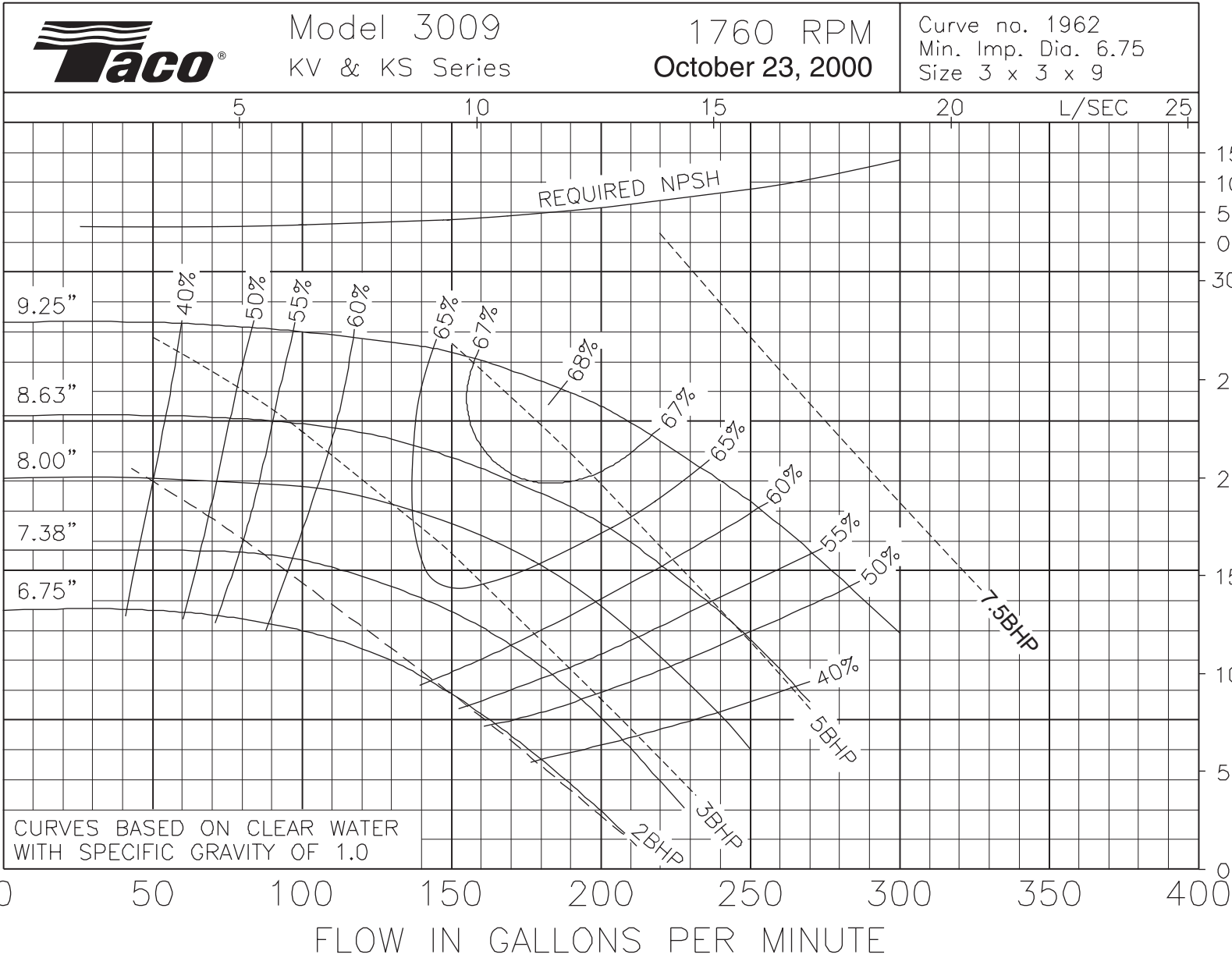


Model 3007  
KV & KS Series

1760 RPM  
October 23, 2000

Curve no. 1969  
Min. Imp. Dia. 5.50  
Size 3 x 3 x 7



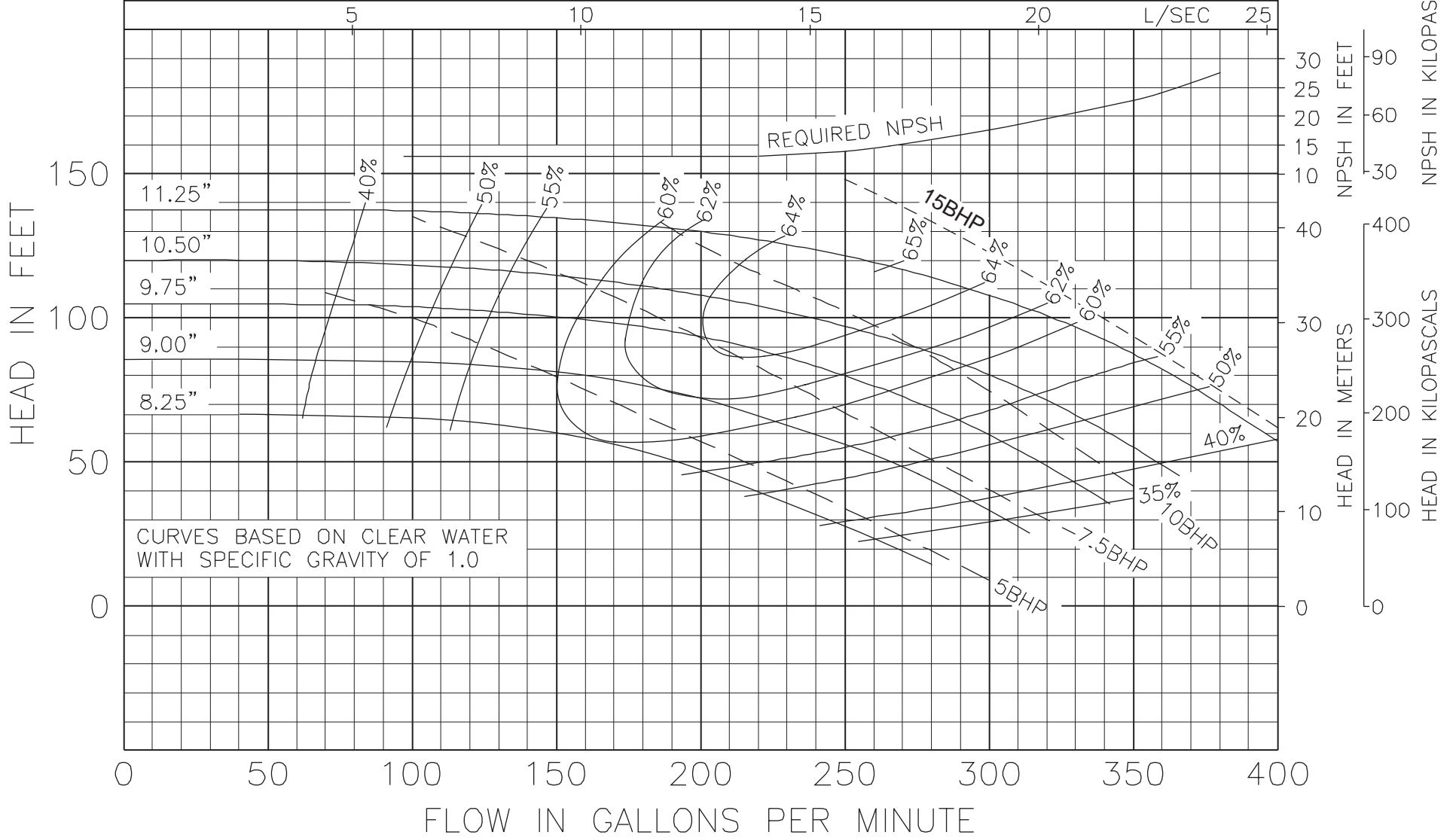




Model 3011  
KV & KS Series

1760 RPM  
October 23, 2000

Curve no. 1926  
Min. Imp. Dia. 8.25  
Size 3 x 3 x 11



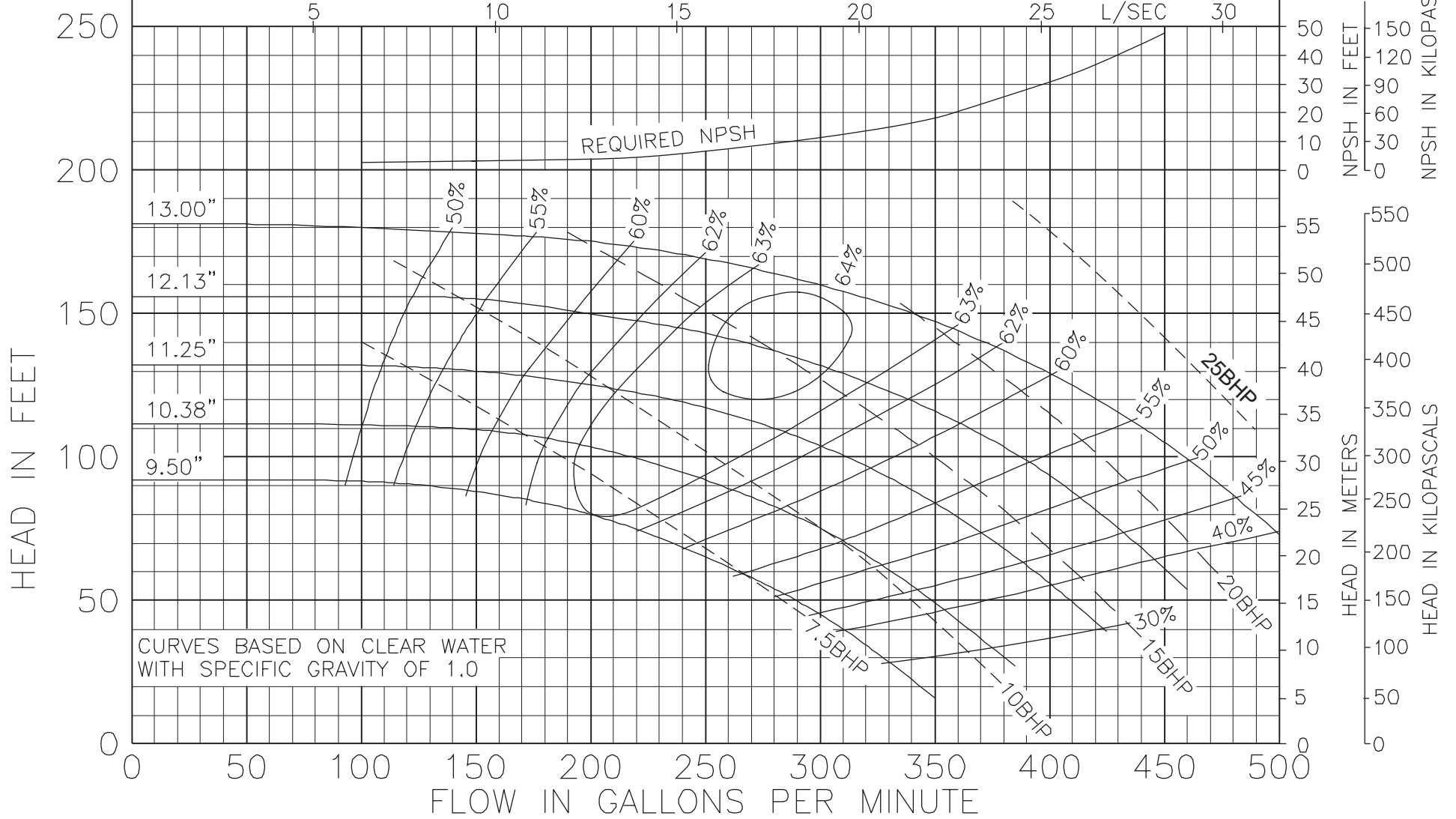




Model 3013  
KV & KS Series

1760 RPM  
October 23, 2000

Curve no. 1913  
Min. Imp. Dia. 9.50  
Size 3 x 3 x 13

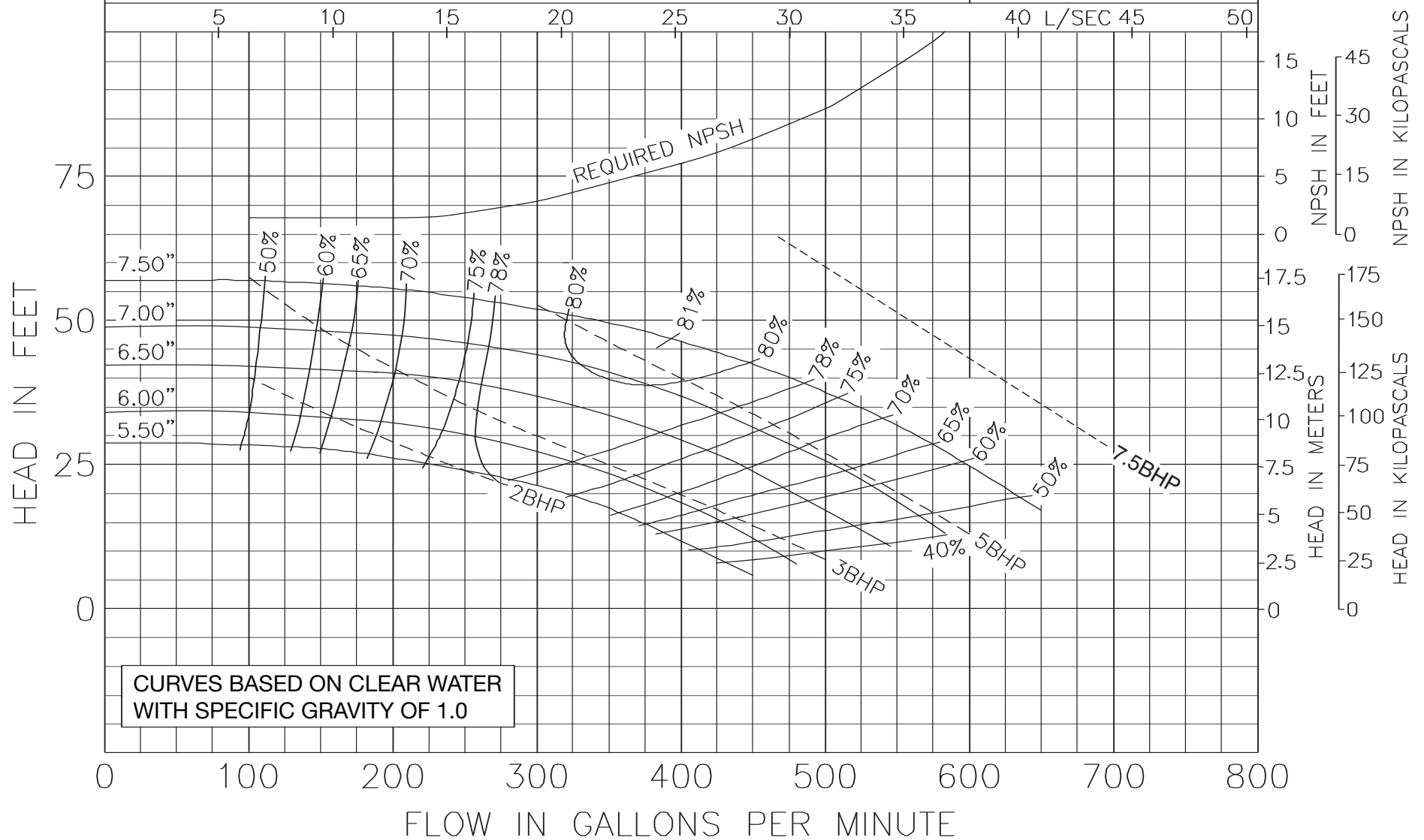




Model 4007  
KV & KS Series

1760 RPM  
MAY 1, 2010

Curve no. 1943  
Min. Imp. Dia. 5.50  
Size 4 x 4 x 7

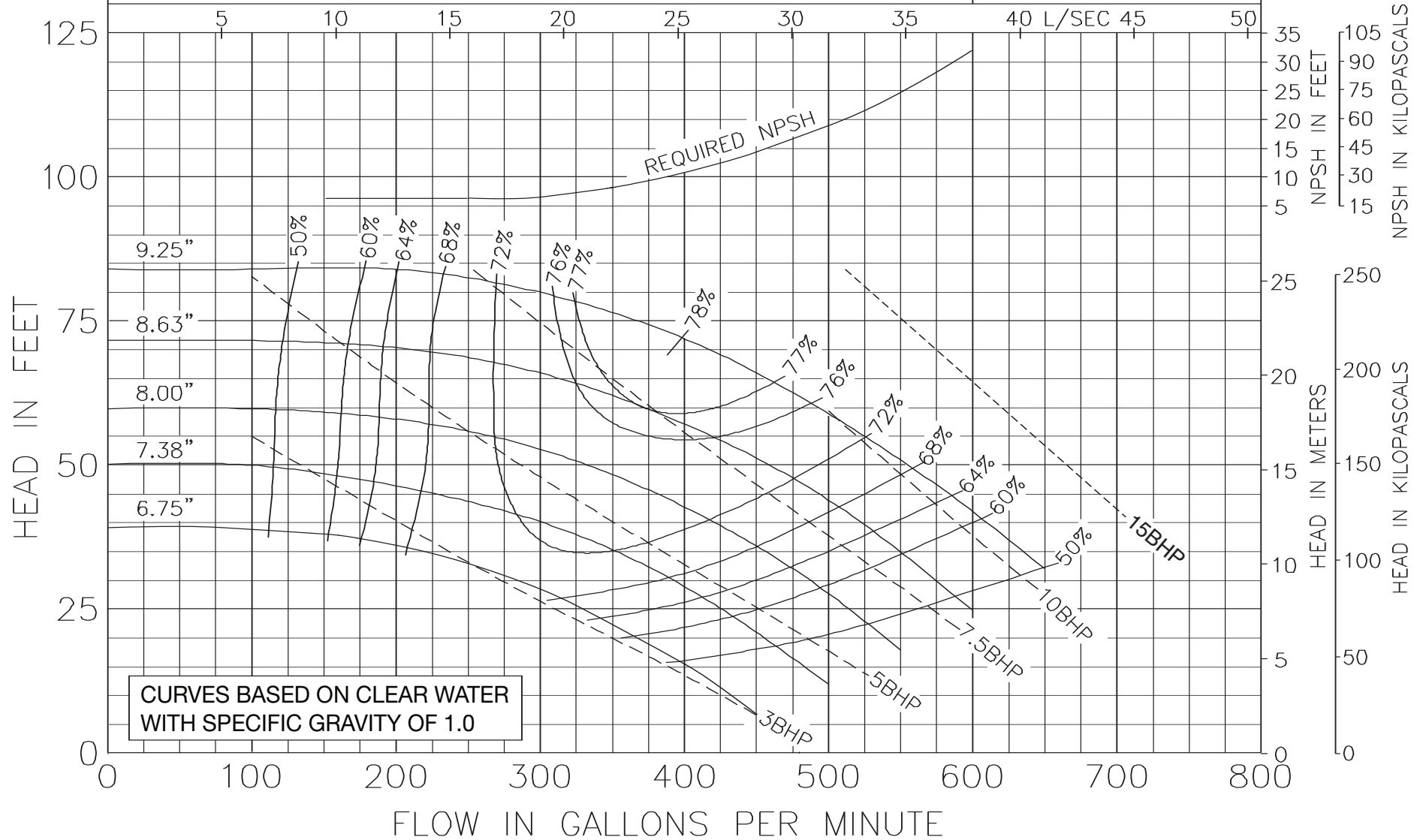




Model 4009  
KV & KS Series

1760 RPM  
MAY 1, 2010

Curve no. 1981  
Min. Imp. Dia. 6.75  
Size 4 x 4 x 9

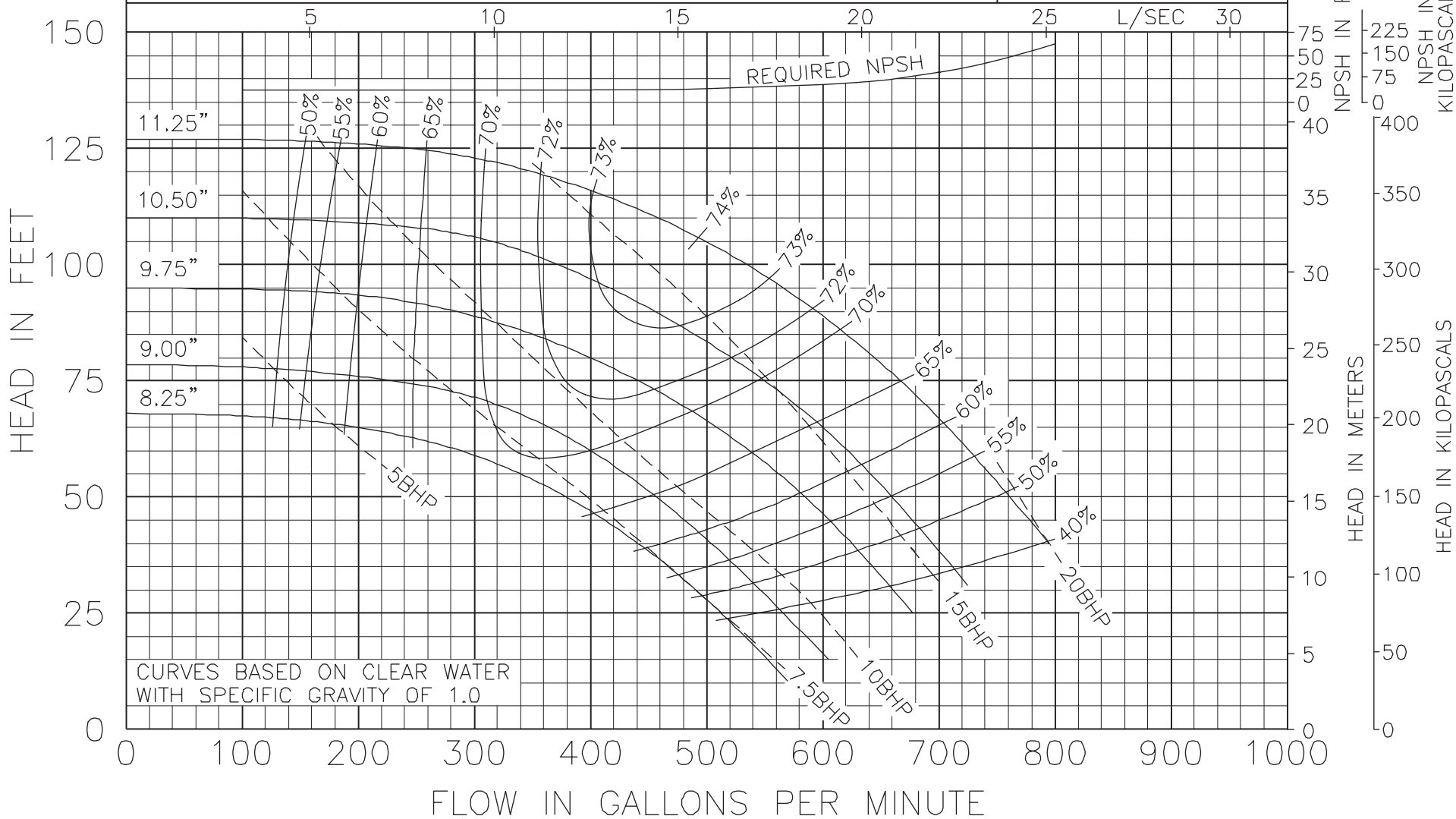




Model 4011  
KV & KS Series

1760 RPM  
October 23, 2000

Curve no. 1946  
Min. Imp. Dia. 8.25  
Size 4 x 4 x 11



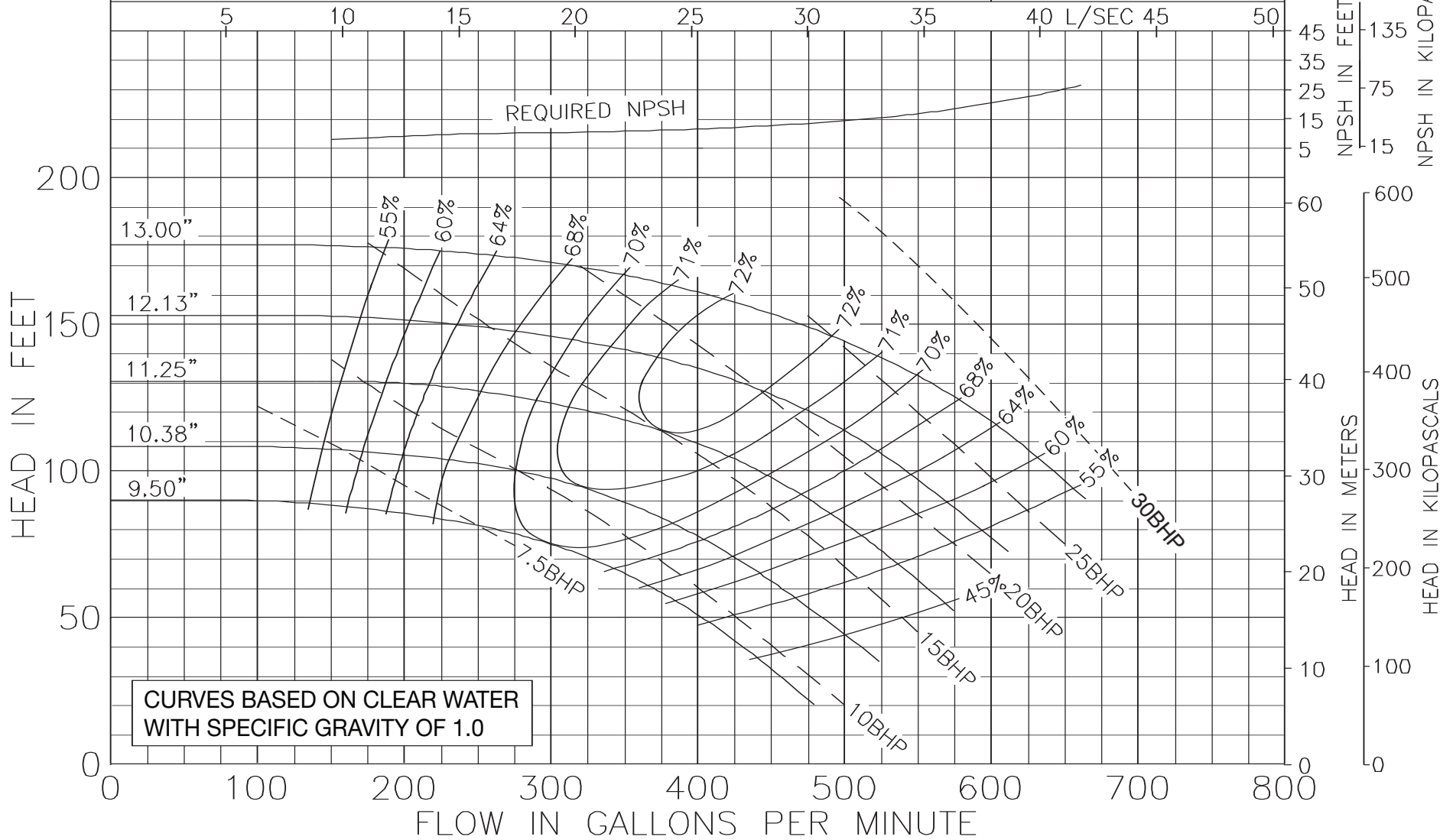
CURVES BASED ON CLEAR WATER  
WITH SPECIFIC GRAVITY OF 1.0



Model 4013  
KV & KS Series

1760 RPM  
MAY 1, 2010

Curve no. 1916  
Min. Imp. Dia. 9,50  
Size 4 x 4 x 13

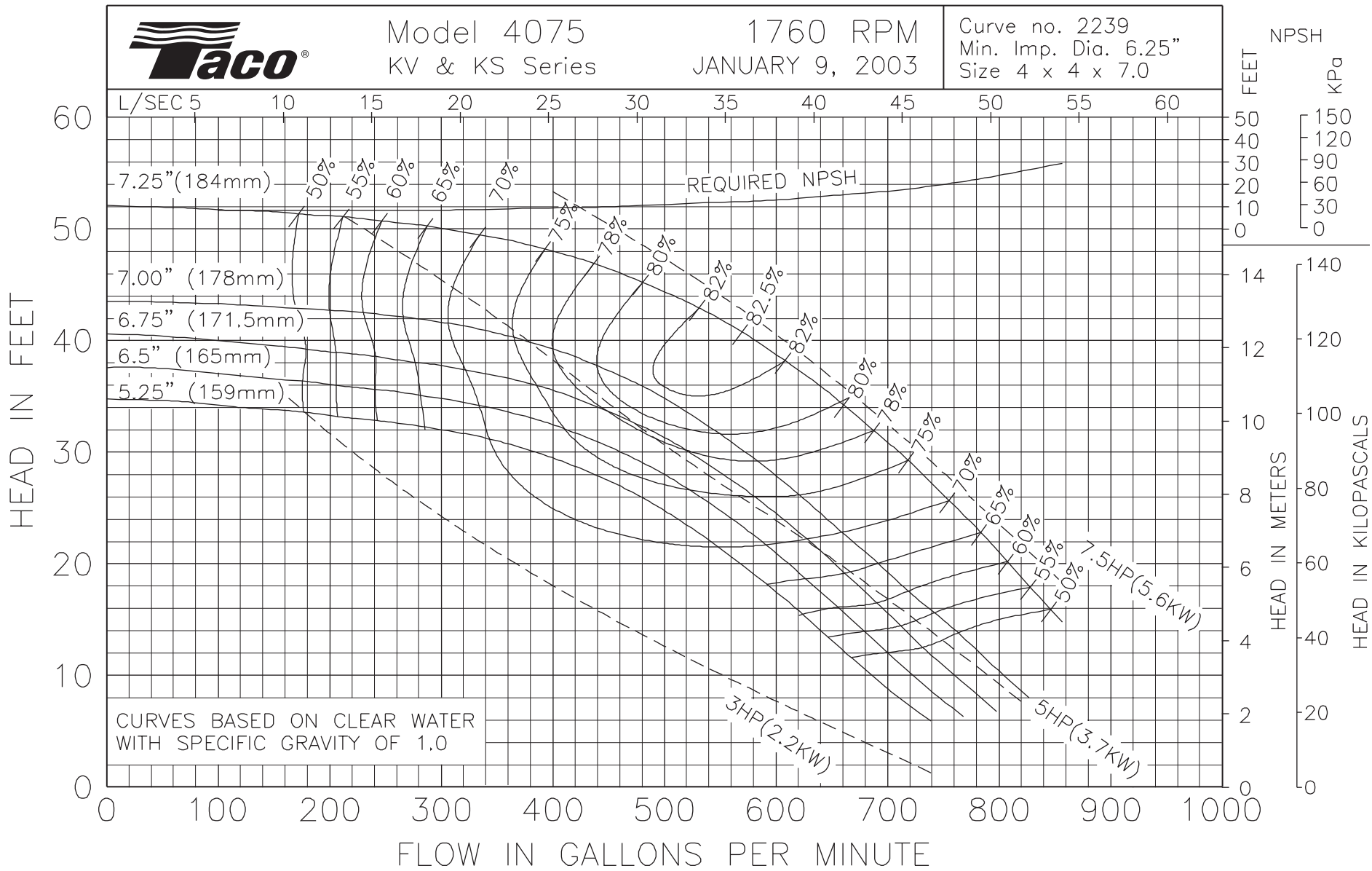




Model 4075  
KV & KS Series

1760 RPM  
JANUARY 9, 2003

Curve no. 2239  
Min. Imp. Dia. 6.25"  
Size 4 x 4 x 7.0

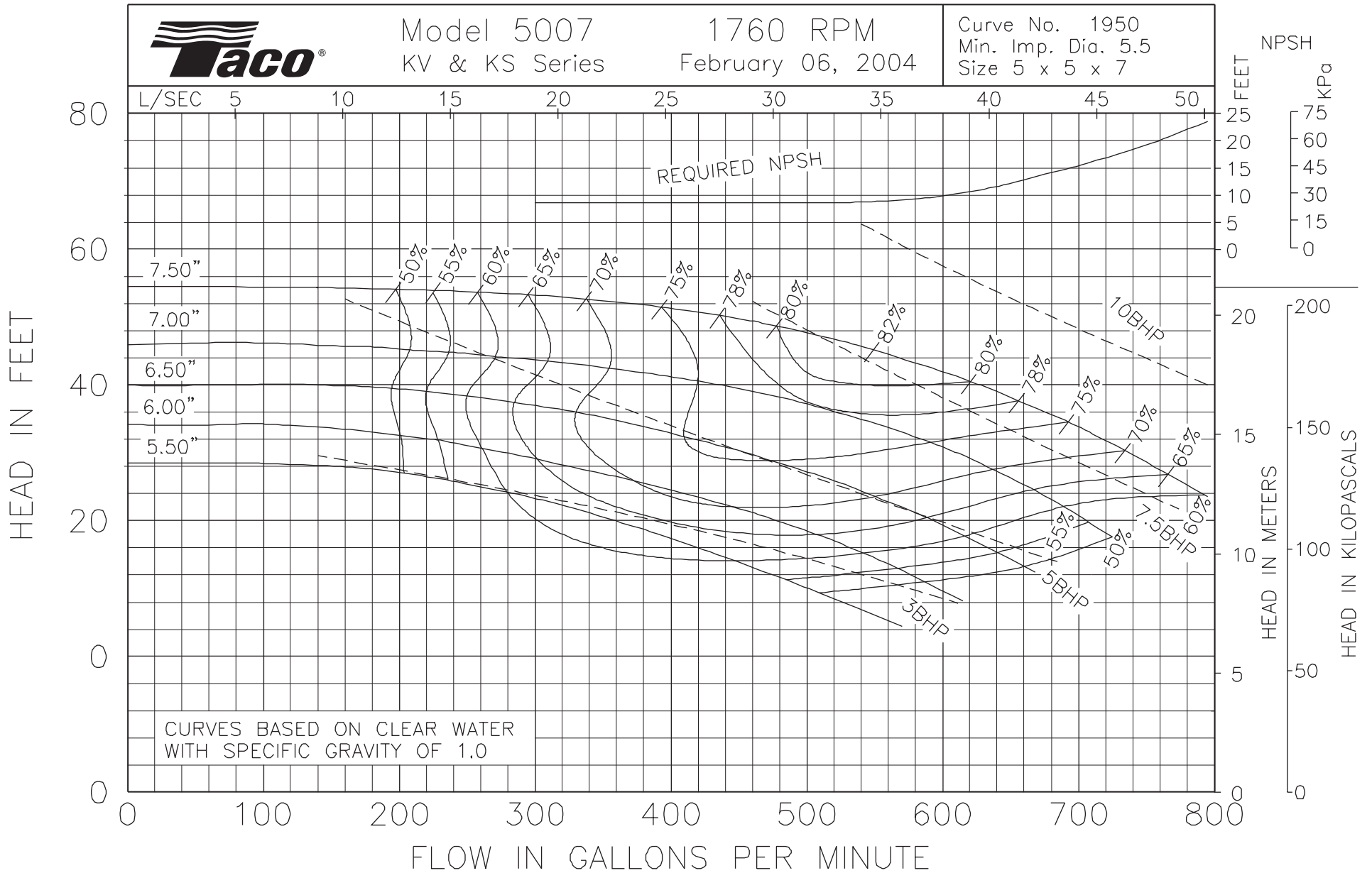




Model 5007  
KV & KS Series

1760 RPM  
February 06, 2004

Curve No. 1950  
Min. Imp. Dia. 5.5  
Size 5 x 5 x 7

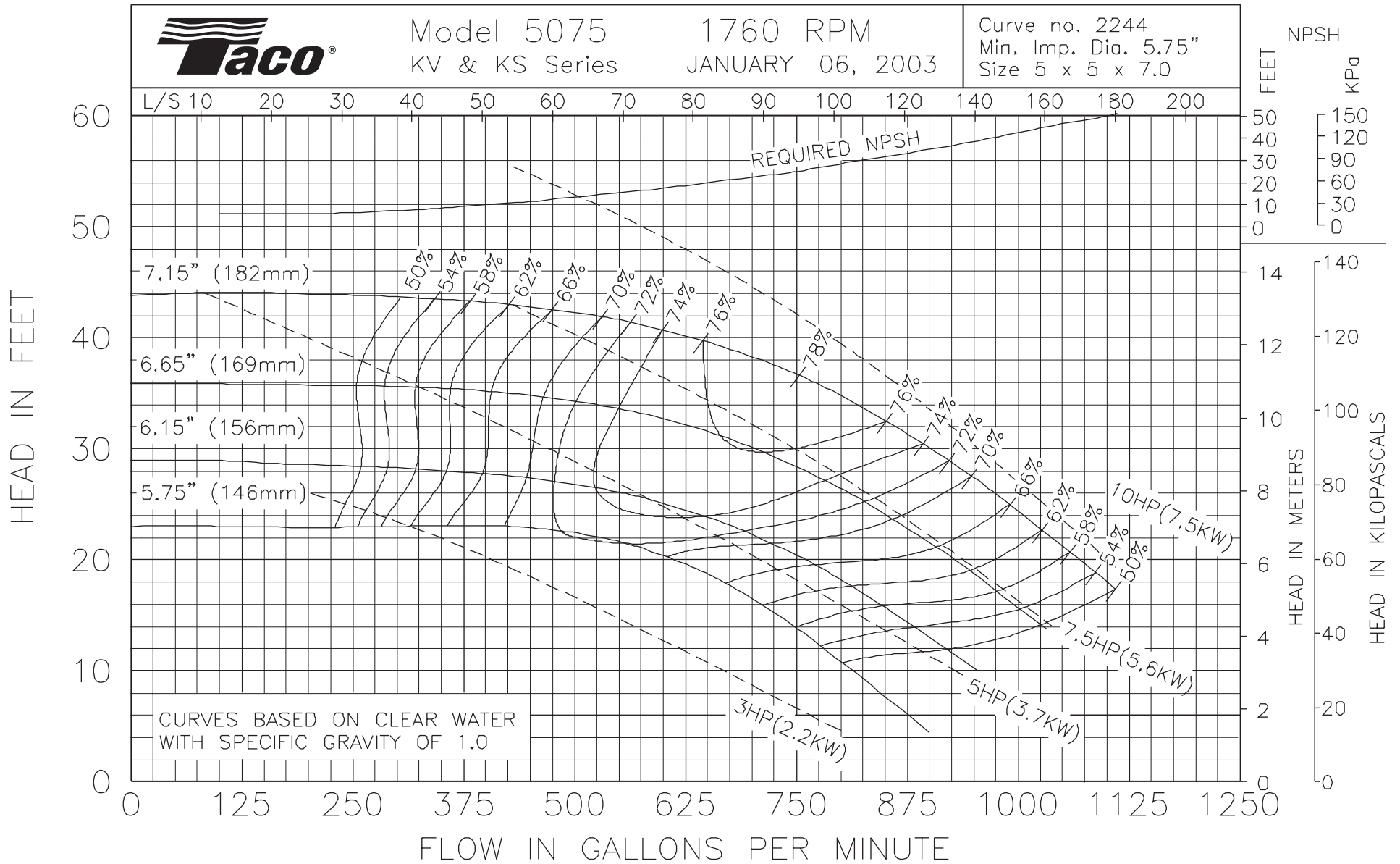




Model 5075  
KV & KS Series

1760 RPM  
JANUARY 06, 2003

Curve no. 2244  
Min. Imp. Dia. 5.75"  
Size 5 x 5 x 7.0



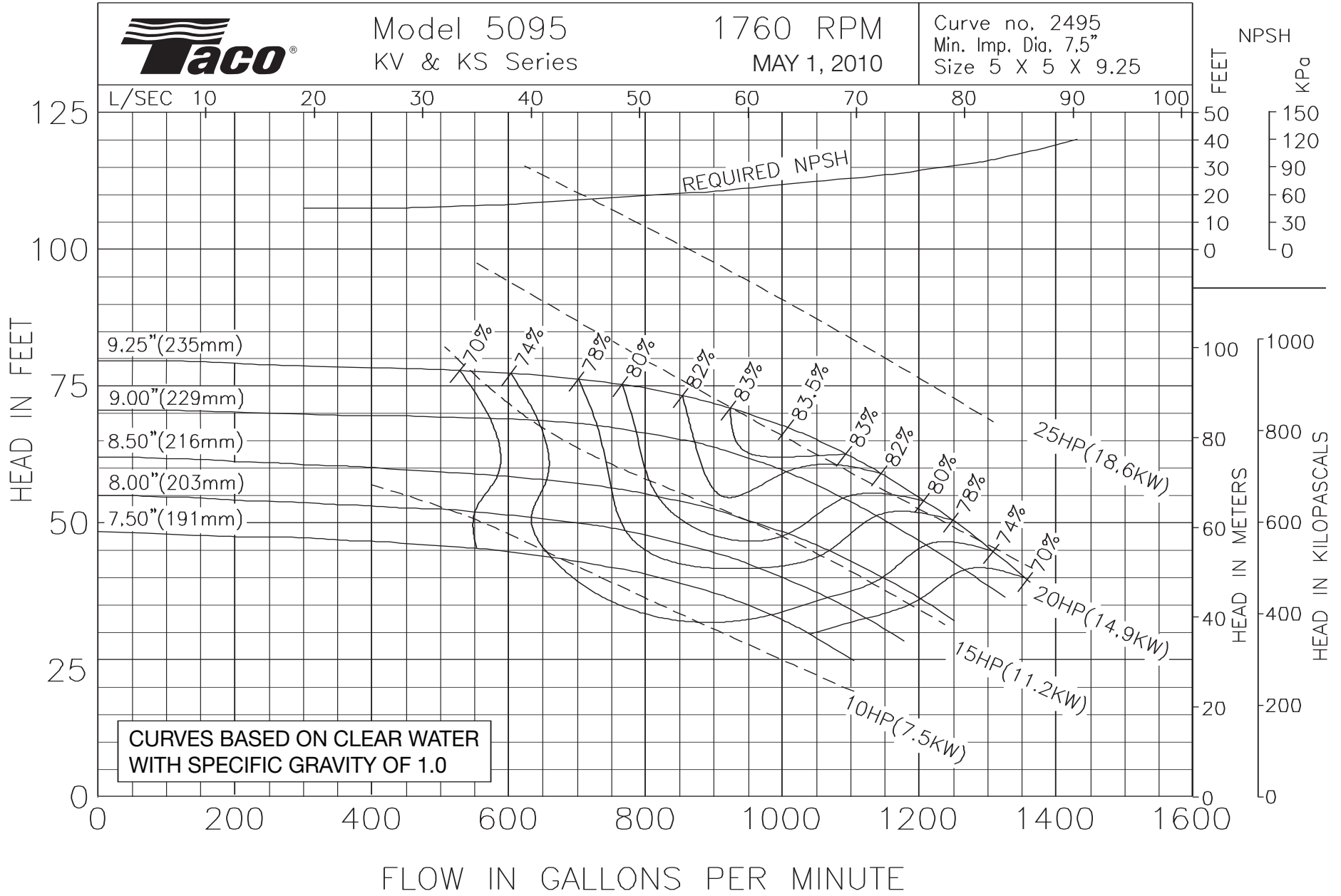




Model 5095  
KV & KS Series

1760 RPM  
MAY 1, 2010

Curve no. 2495  
Min. Imp. Dia. 7.5"  
Size 5 X 5 X 9.25

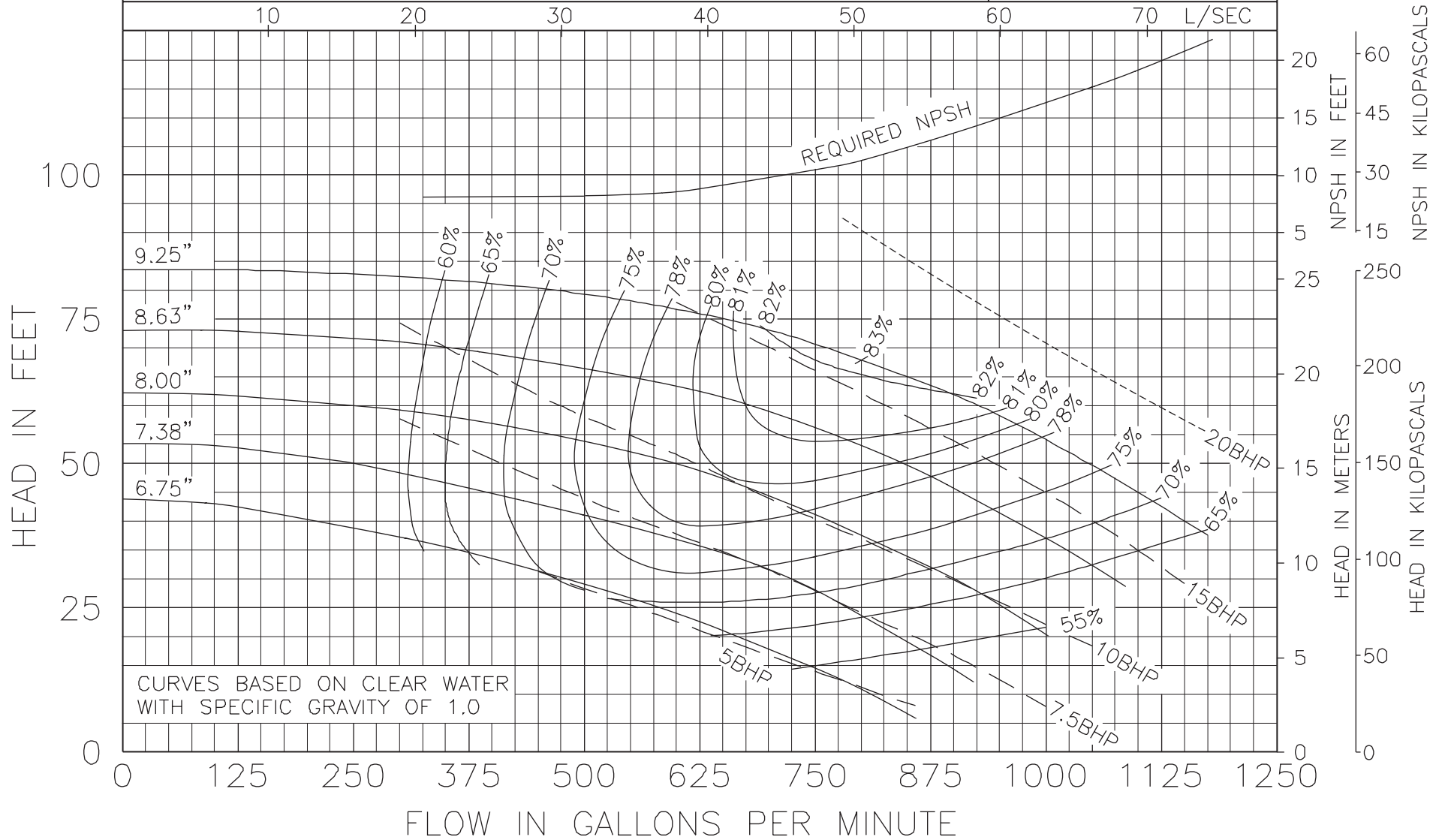




Model 6009  
KV & KS Series

1760 RPM  
October 23 2000

Curve no. 1905  
Min. Imp. Dia. 6.75  
Size 6 x 6 x 9

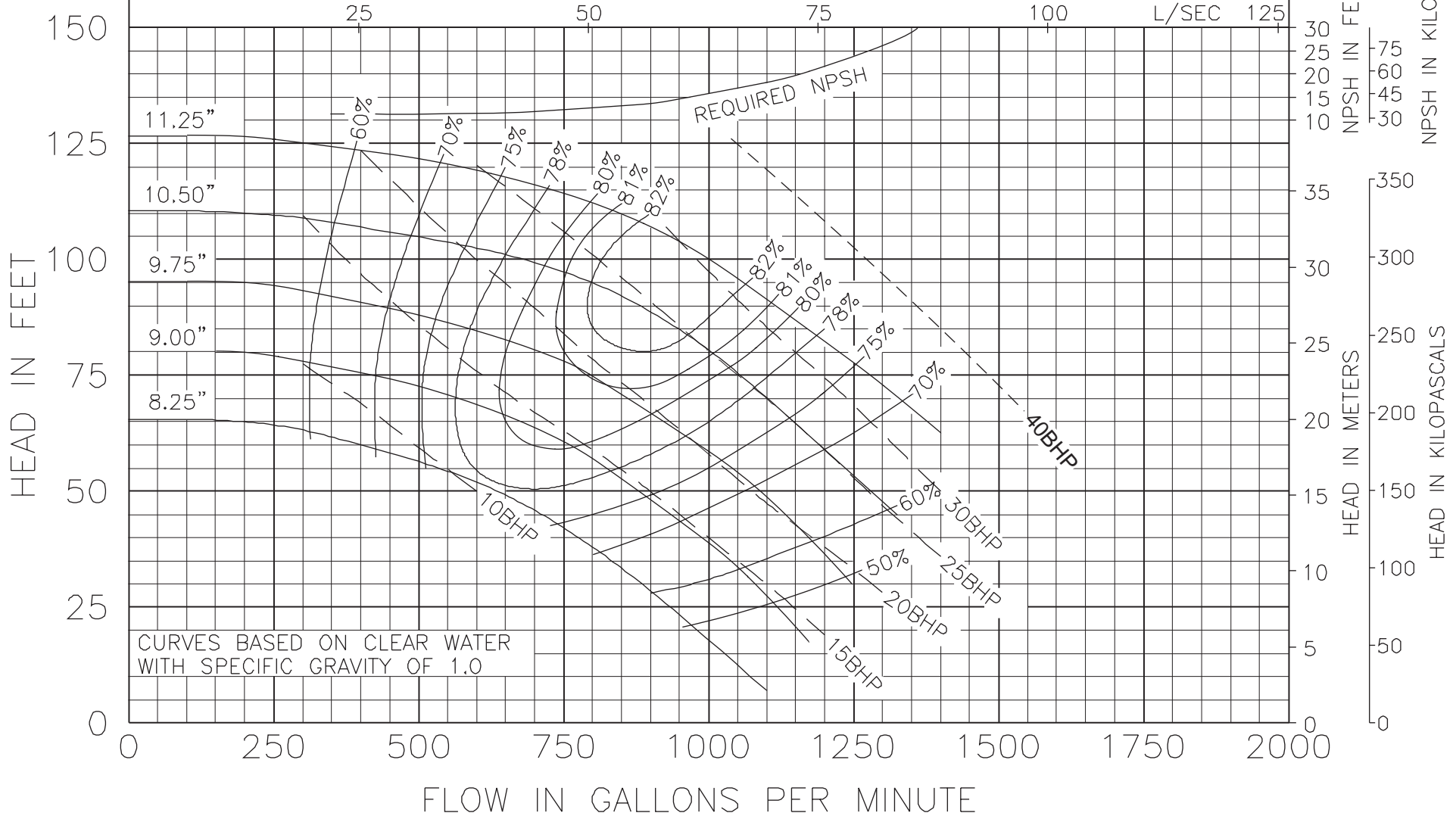




Model 6011  
KV & KS Series

1760 RPM  
October 23, 2000

Curve no. 1908  
Min. Imp. Dia. 8.25  
Size 6 x 6 x 11



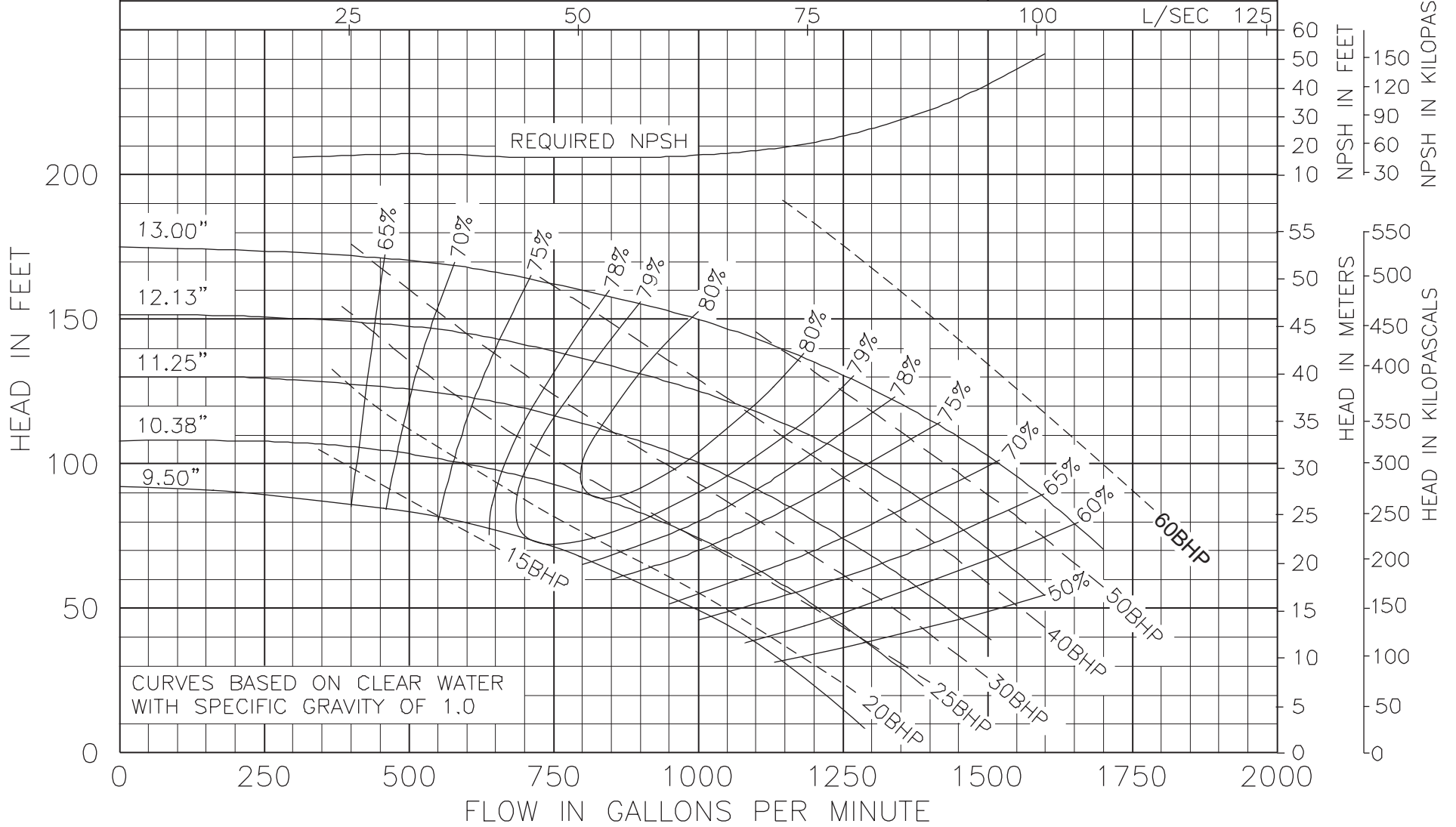
CURVES BASED ON CLEAR WATER  
WITH SPECIFIC GRAVITY OF 1.0



Model 6013  
KV & KS Series

1760 RPM  
October 23, 2000

Curve no. 1920  
Min. Imp. Dia. 9.50"  
Size 6 x 6 x 13

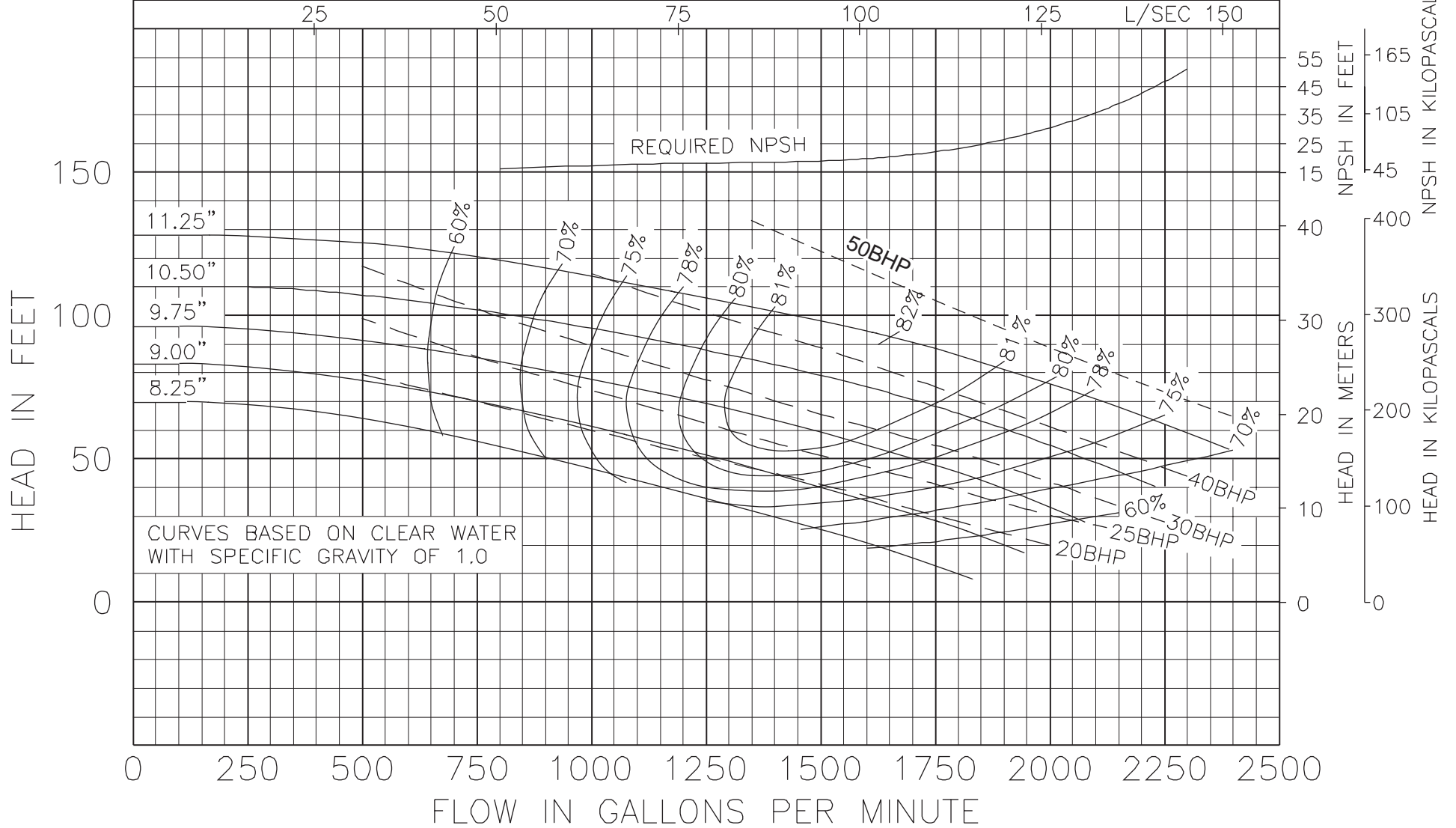




Model 8011  
KV & KS Series

1760 RPM  
October 23, 2000

Curve no. 1911  
Min. Imp. Dia. 8.25  
Size 8 x 8 x 11





Model 8013  
KV & KS Series

1760 RPM  
October 23, 2000

Curve no. 1923  
Min. Imp. Dia. 9.50"  
Size 8 x 8 x 13

