



Submittal Data Information

FI Series Pumps

301-1401

EFFECTIVE: MARCH 1, 2010

SUPERSEDES: OCTOBER 1, 2009

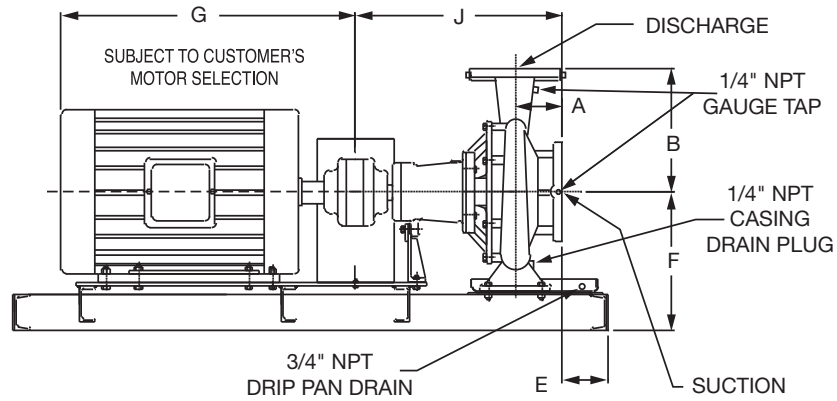
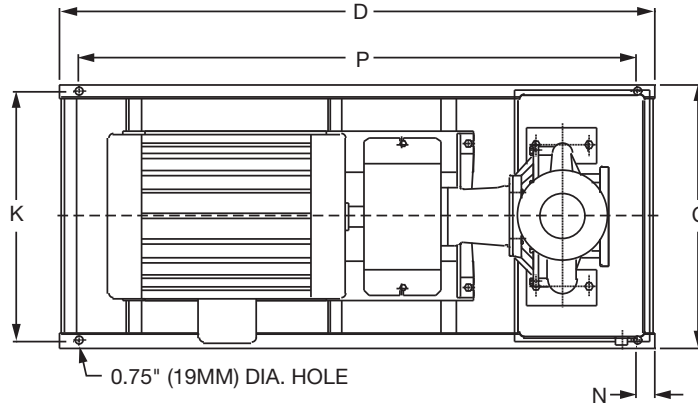
3500 RPM MODEL 1206

JOB _____ ENGINEER _____

CONTRACTOR _____ REP. _____

| ITEM NO. | MODEL NO. | IMPELLER DIA. | G.P.M. | HEAD/FT. | H.P. | ELEC. CHAR. |
|----------|-----------|---------------|--------|----------|------|-------------|
| | | | | | | |

WEIGHT _____ PUMP/MOTOR _____



DIMENSIONS

50 Cycle Performance Curves attached when applicable.

| Model No. Flange Size (Suction x Discharge) | Motor Frame | HP 3500 (RPM) | A | | B | | C | D | E | | F | G | J | | K | N | P |
|---|----------------|---------------------|----------------------|----------------------|----------------------|----------------------|-------------|------------|----------------------|----------------------|---------------|-------------|----------------------|----------------------|-------------|--------------|------------|
| | | | ANSI Class 125 | ANSI Class 250 | ANSI Class 125 | ANSI Class 250 | | | ANSI Class 125 | ANSI Class 250 | | | ANSI Class 125 | ANSI Class 250 | | | |
| 1206 2 x 1 1/4 (51 x 32) | 145T | 2 | 3.75 (95) | 4.00 (102) | 6.25 (159) | 6.50 (165) | 14.17 (360) | 30.0 (762) | 0.75 (19) | 0.49 (12) | 9.51 (242) | 13.00 (330) | 16.98 (431) | 17.23 (438) | 12.67 (322) | 2.00 (51) | 26.0 (660) |
| | 182T | 3 | | | | | 14.17 (360) | 35.0 (889) | 1.48 (38) | 1.22 (31) | | 15.38 (391) | | | 12.67 (322) | | 31.0 (787) |
| | 184T | 5 | | | | | 14.17 (360) | 35.0 (889) | 1.48 (38) | 1.22 (31) | | 16.56 (421) | | | 12.67 (322) | | 31.0 (787) |
| | 213T | 7.5 | | | | | 14.17 (360) | 35.0 (889) | 1.48 (38) | 1.22 (31) | | 17.94 (456) | | | 12.67 (322) | | 31.0 (787) |
| | | | | | | | | | | | | | | | | | |

English dimensions are in inches. Metric dimensions are in millimeters. Metric data is presented in ().
Do not use for construction purposes unless certified.

MATERIALS OF CONSTRUCTION

| Item | BRONZE FITTED | | ALL IRON | |
|-----------------|--------------------------------------|--------------------------------------|------------------------------------|------------------------------------|
| | Std. Pump Constr. | Optional | Standard | Optional |
| Casing | Cast Iron ASTM A48 Class 30A | N/A | Cast Iron ASTM A48 Class 30A | N/A |
| Impeller | Bronze ASTM B584-836 | N/A | Cast Iron ASTM A48 Class 30A | N/A |
| Wear Ring | N/A | Bronze ASTM B584-932 SAE660 | N/A | N/A |
| Shaft | Carbon Steel AISI 1045 | St. Steel AISI 416 ASTM A582 | Carbon Steel AISI 1045 | St. Steel AISI 416 ASTM A582 |
| Shaft Sleeve | Bronze ASTM B584-932 SAE660 | St. Steel AISI 303 ASTM A276 | St. Steel AISI 303 ASTM A276 | N/A |
| Mech. Seal | Ceramic/ EPT | CF | Ceramic/ EPT | CF |
| Seal Flush Line | N/A | Copper | N/A | Stainless Steel |

CF - Consult Factory

N/A - Not Available

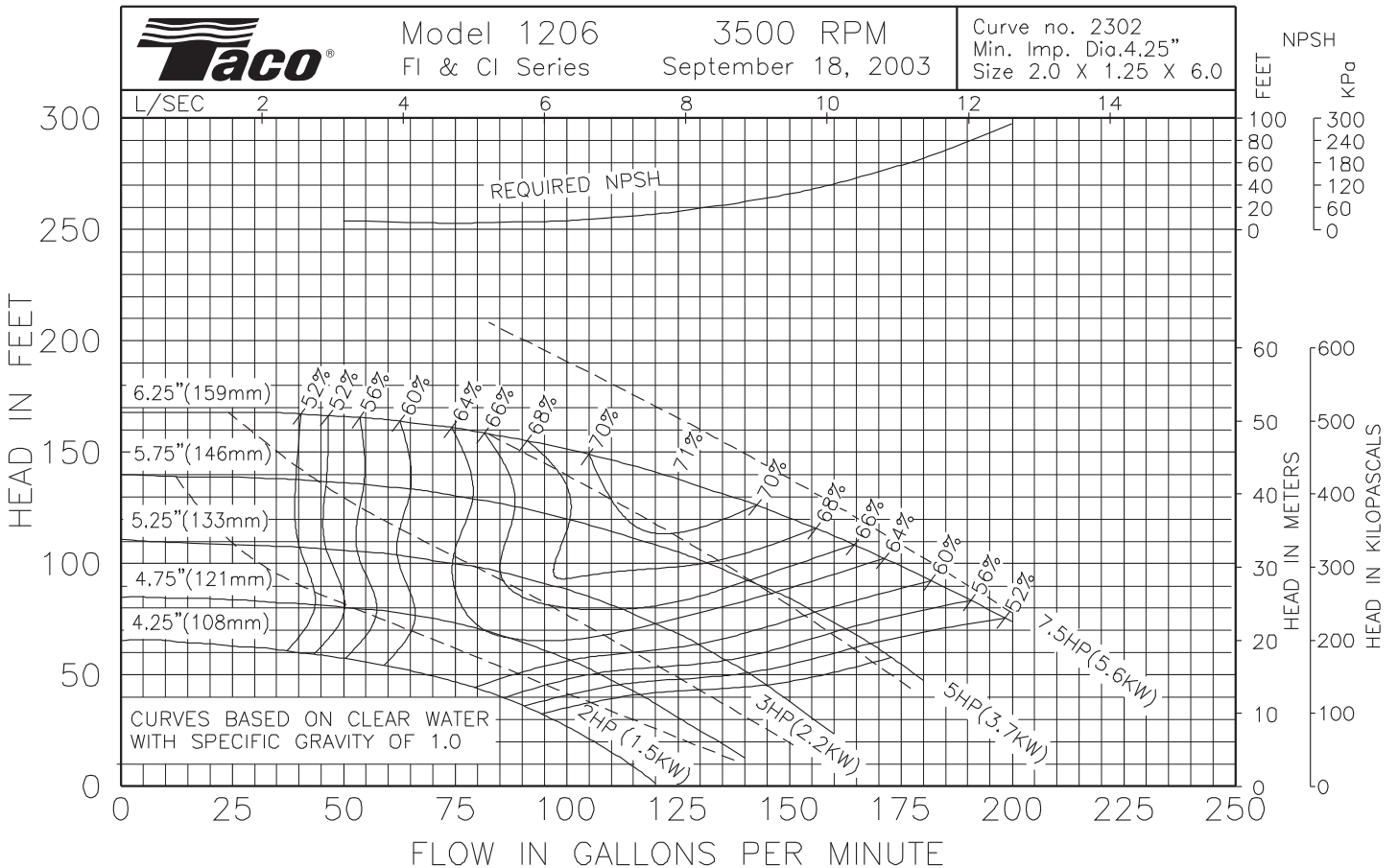
OPERATING SPECIFICATIONS

| | Standard | Optional |
|-------------|-------------------------|--------------------------|
| Flange | ANSI Class 125 | ANSI Class 250 |
| Pressure | 175 PSIG* (1210 KPA) | 300 PSIG** (2070 KPA) |
| Temperature | 250°F (120°C) | 250°F (120°C) |

Motors: All NEMA Standard (T Frame)
 * In accordance with ANSI Standard B16.1 Class 125
 ** In accordance with ANSI Standard B16.1 Class 250 Dim.

MAXIMUM ASSEMBLY WEIGHT

| Motor Frame | Weight Lbs (Kg) |
|-------------|--------------------|
| 143T - 145T | 226 (103) |
| 182T - 184T | 261 (118) |
| 213T - 215T | 328 (149) |



Comments:

Do it Once. Do it Right.®

TACO, INC., 1160 Cranston Street, Cranston, RI 02920 Telephone: (401) 942-8000 FAX: (401) 942-2360.
TACO (Canada), Ltd., 8450 Lawson Road, Unit #3, Milton, Ontario L9T 0J8. Telephone: 905/564-9422. FAX: 905/564-9436.
 Visit our web site at: <http://www.taco-hvac.com>

Printed in USA
 Copyright 2010
 TACO, Inc.



Submittal Data Information

FI Series Pumps

301-1408

EFFECTIVE: MARCH 1, 2010

SUPERSEDES: OCTOBER 1, 2009

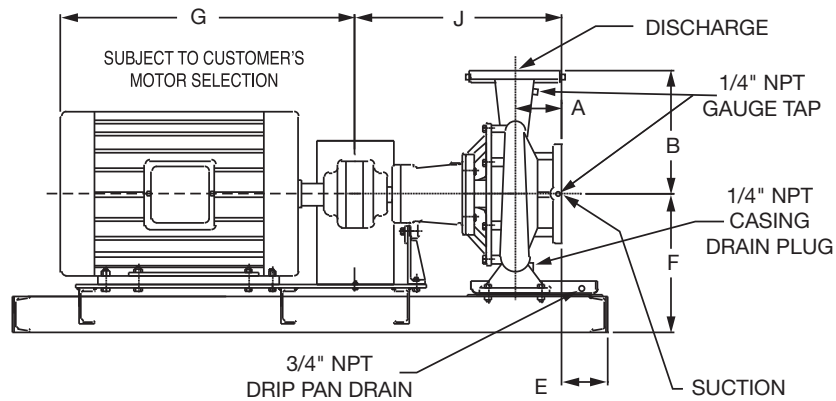
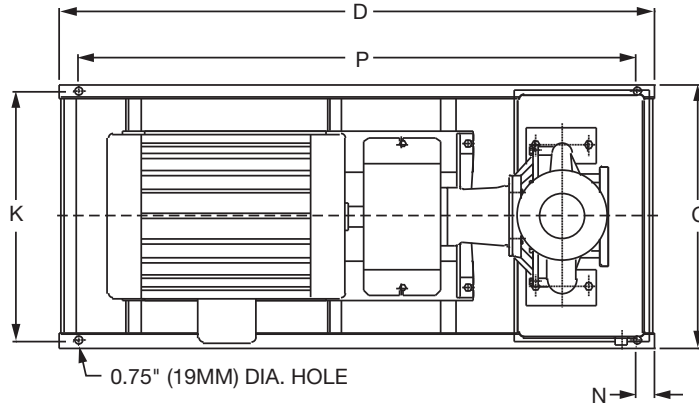
3500 RPM MODEL 1207

JOB _____ ENGINEER _____

CONTRACTOR _____ REP. _____

| ITEM NO. | MODEL NO. | IMPELLER DIA. | G.P.M. | HEAD/FT. | H.P. | ELEC. CHAR. |
|----------|-----------|---------------|--------|----------|------|-------------|
| | | | | | | |

WEIGHT _____ PUMP/MOTOR _____



DIMENSIONS

50 Cycle Performance Curves attached when applicable.

| Model No. Flange Size (Suction x Discharge) | Motor Frame | HP 3500 (RPM) | A | | B | | C | D | E | | F | G | J | | K | N | P |
|---|----------------|---------------------|----------------------|----------------------|----------------------|----------------------|-------------|------------|----------------------|----------------------|----------------|-------------|----------------------|----------------------|-------------|--------------|------------|
| | | | ANSI Class 125 | ANSI Class 250 | ANSI Class 125 | ANSI Class 250 | | | ANSI Class 125 | ANSI Class 250 | | | ANSI Class 125 | ANSI Class 250 | | | |
| 1207 2 x 1/4 (51 x 32) | 184T | 5 | 3.75 (95) | 4.01 (102) | 7.25 (184) | 7.50 (191) | 14.17 (360) | 32.0 (813) | 0.89 (22) | 0.63 (16) | 10.61 (269) | 16.56 (421) | 17.10 (434) | 17.36 (441) | 12.67 (322) | 2.00 (51) | 28.0 (711) |
| | 213T | 7.5 | | | | | 16.17 (411) | 39.0 (991) | 0.76 (19) | 0.50 (13) | | 17.94 (456) | | | 14.67 (373) | | 35.0 (889) |
| | 215T | 10 | | | | | 16.17 (411) | 39.0 (991) | 0.76 (19) | 0.50 (13) | | 18.19 (462) | | | 14.67 (373) | | 35.0 (889) |
| | 254T | 15 | | | | | 16.17 (411) | 39.0 (991) | 0.76 (19) | 0.50 (13) | | 21.69 (551) | | | 14.67 (373) | | 35.0 (889) |
| | | | | | | | | | | | | | | | | | |

English dimensions are in inches. Metric dimensions are in millimeters. Metric data is presented in ().
Do not use for construction purposes unless certified.

MATERIALS OF CONSTRUCTION

| Item | BRONZE FITTED | | ALL IRON | |
|-----------------|--------------------------------------|--------------------------------------|------------------------------------|------------------------------------|
| | Std. Pump Constr. | Optional | Standard | Optional |
| Casing | Cast Iron ASTM A48 Class 30A | N/A | Cast Iron ASTM A48 Class 30A | N/A |
| Impeller | Bronze ASTM B584-836 | N/A | Cast Iron ASTM A48 Class 30A | N/A |
| Wear Ring | N/A | Bronze ASTM B584-932 SAE660 | N/A | N/A |
| Shaft | Carbon Steel AISI 1045 | St. Steel AISI 416 ASTM A582 | Carbon Steel AISI 1045 | St. Steel AISI 416 ASTM A582 |
| Shaft Sleeve | Bronze ASTM B584-932 SAE660 | St. Steel AISI 303 ASTM A276 | St. Steel AISI 303 ASTM A276 | N/A |
| Mech. Seal | Ceramic/ EPT | CF | Ceramic/ EPT | CF |
| Seal Flush Line | N/A | Copper | N/A | Stainless Steel |

CF - Consult Factory

N/A - Not Available

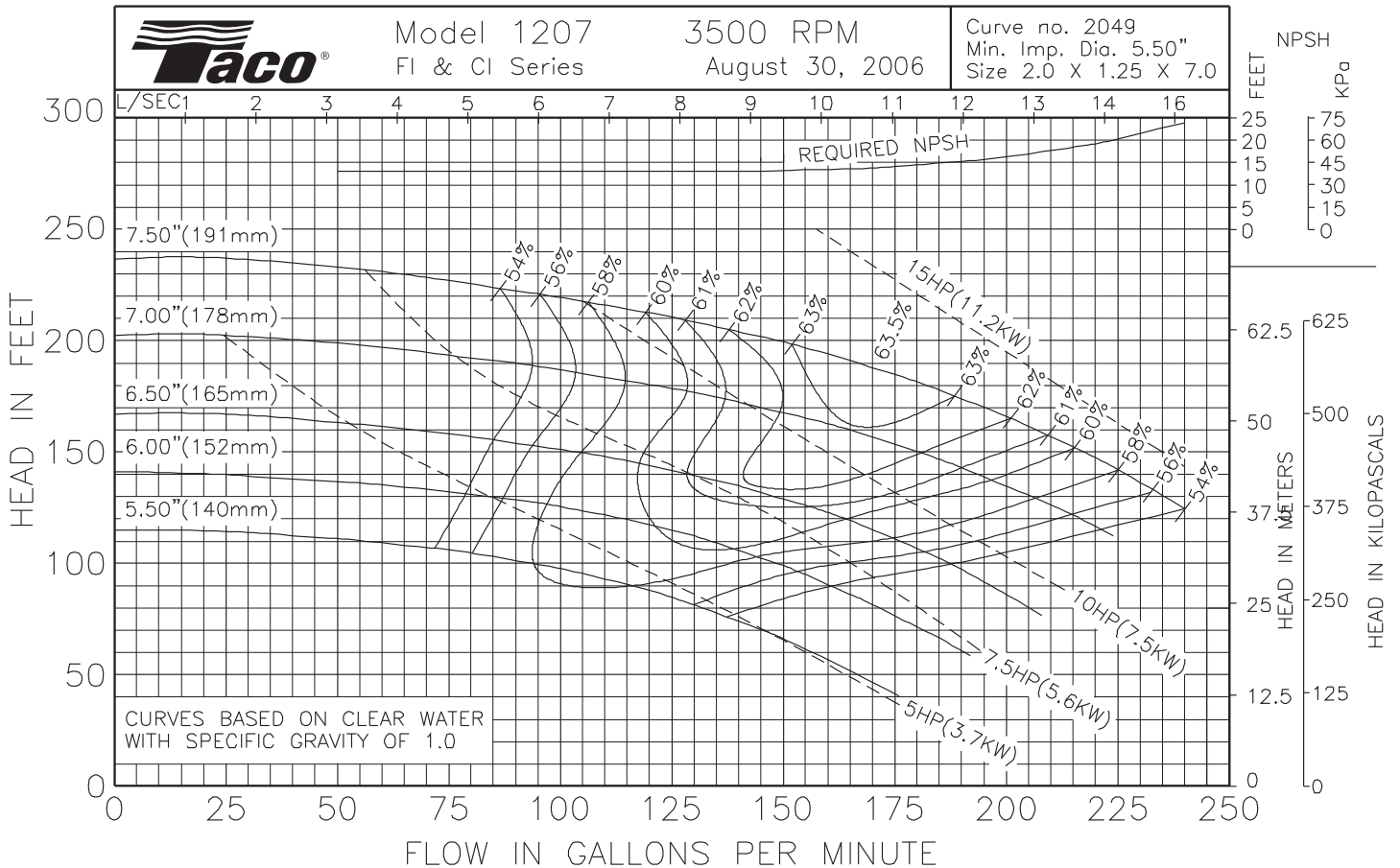
OPERATING SPECIFICATIONS

| | Standard | Optional |
|-------------|-------------------------|--------------------------|
| Flange | ANSI Class 125 | ANSI Class 250 |
| Pressure | 175 PSIG* (1210 KPA) | 300 PSIG** (2070 KPA) |
| Temperature | 250°F (120°C) | 250°F (120°C) |

Motors: All NEMA Standard (T Frame)
 * In accordance with ANSI Standard B16.1 Class 125
 ** In accordance with ANSI Standard B16.1 Class 250 Dim.

MAXIMUM ASSEMBLY WEIGHT

| Motor Frame | Weight Lbs (Kg) |
|-------------|--------------------|
| 182T - 184T | 286 (130) |
| 213T - 215T | 372 (169) |
| 254T - 256T | 457 (207) |



Comments:

Do it Once. Do it Right.®

TACO, INC., 1160 Cranston Street, Cranston, RI 02920 Telephone: (401) 942-8000 FAX: (401) 942-2360.
 TACO (Canada), Ltd., 8450 Lawson Road, Unit #3, Milton, Ontario L9T 0J8. Telephone: 905/564-9422. FAX: 905/564-9436.

Visit our web site at: <http://www.taco-hvac.com>

Printed in USA
 Copyright 2010
 TACO, Inc.



Submittal Data Information

FI Series Pumps

301-1403

EFFECTIVE: MARCH 1, 2010

SUPERSEDES: OCTOBER 1, 2009

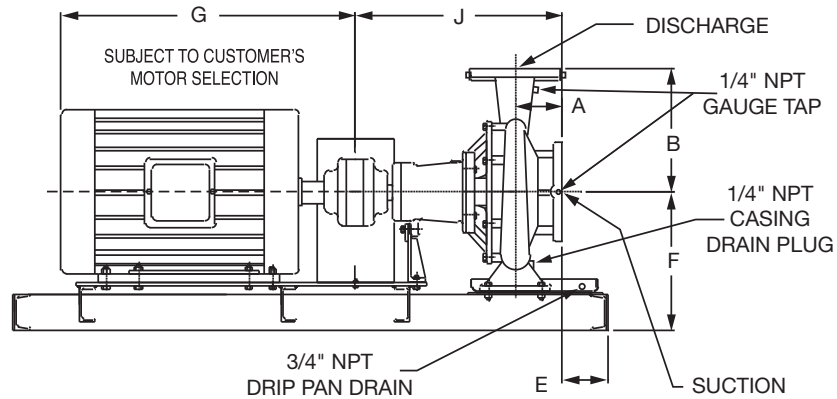
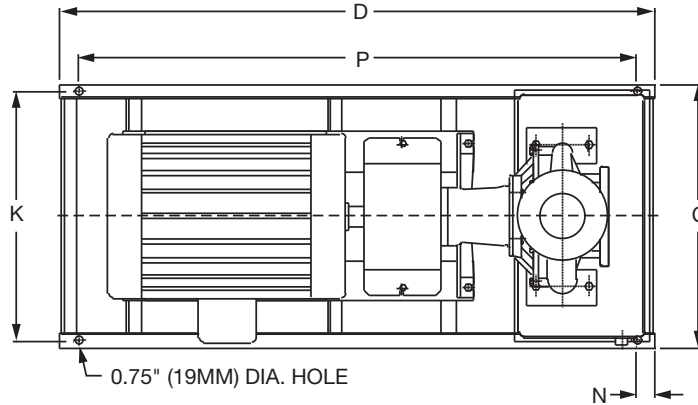
3500 RPM MODEL 1506

JOB _____ ENGINEER _____

CONTRACTOR _____ REP. _____

| ITEM NO. | MODEL NO. | IMPELLER DIA. | G.P.M. | HEAD/FT. | H.P. | ELEC. CHAR. |
|----------|-----------|---------------|--------|----------|------|-------------|
| | | | | | | |

WEIGHT _____ PUMP/MOTOR _____



DIMENSIONS

50 Cycle Performance Curves attached when applicable.

| Model No. Flange Size (Suction x Discharge) | Motor Frame | HP 3500 (RPM) | A | | B | | C | D | E | | F | G | J | | K | N | P |
|---|----------------|---------------------|----------------------|----------------------|----------------------|----------------------|-------------|------------|----------------------|----------------------|---------------|-------------|----------------------|----------------------|-------------|--------------|------------|
| | | | ANSI Class 125 | ANSI Class 250 | ANSI Class 125 | ANSI Class 250 | | | ANSI Class 125 | ANSI Class 250 | | | ANSI Class 125 | ANSI Class 250 | | | |
| 1506 2 1/2 x 1 1/2 (64 x 38) | 184T | 5 | 3.75 (95) | 4.06 (103) | 7.25 (184) | 7.50 (191) | 14.17 (360) | 35.0 (889) | 1.48 (38) | 1.16 (29) | 9.51 (242) | 16.56 (421) | 17.02 (432) | 17.33 (440) | 12.67 (322) | 2.00 (51) | 31.0 (787) |
| | 213T | 7.5 | | | | | 14.17 (360) | 35.0 (889) | 1.48 (38) | 1.16 (29) | | 17.94 (456) | | | 12.67 (322) | | 31.0 (787) |
| | 215T | 10 | | | | | 14.17 (360) | 35.0 (889) | 1.48 (38) | 1.16 (29) | | 18.19 (462) | | | 12.67 (322) | | 31.0 (787) |
| | | | | | | | | | | | | | | | | | |

English dimensions are in inches. Metric dimensions are in millimeters. Metric data is presented in ().
Do not use for construction purposes unless certified.

MATERIALS OF CONSTRUCTION

| Item | BRONZE FITTED | | ALL IRON | |
|-----------------|--------------------------------------|--------------------------------------|------------------------------------|------------------------------------|
| | Std. Pump Constr. | Optional | Standard | Optional |
| Casing | Cast Iron ASTM A48 Class 30A | N/A | Cast Iron ASTM A48 Class 30A | N/A |
| Impeller | Bronze ASTM B584-836 | N/A | Cast Iron ASTM A48 Class 30A | N/A |
| Wear Ring | N/A | Bronze ASTM B584-932 SAE660 | N/A | N/A |
| Shaft | Carbon Steel AISI 1045 | St. Steel AISI 416 ASTM A582 | Carbon Steel AISI 1045 | St. Steel AISI 416 ASTM A582 |
| Shaft Sleeve | Bronze ASTM B584-932 SAE660 | St. Steel AISI 303 ASTM A276 | St. Steel AISI 303 ASTM A276 | N/A |
| Mech. Seal | Ceramic/ EPT | CF | Ceramic/ EPT | CF |
| Seal Flush Line | N/A | Copper | N/A | Stainless Steel |

CF - Consult Factory

N/A - Not Available

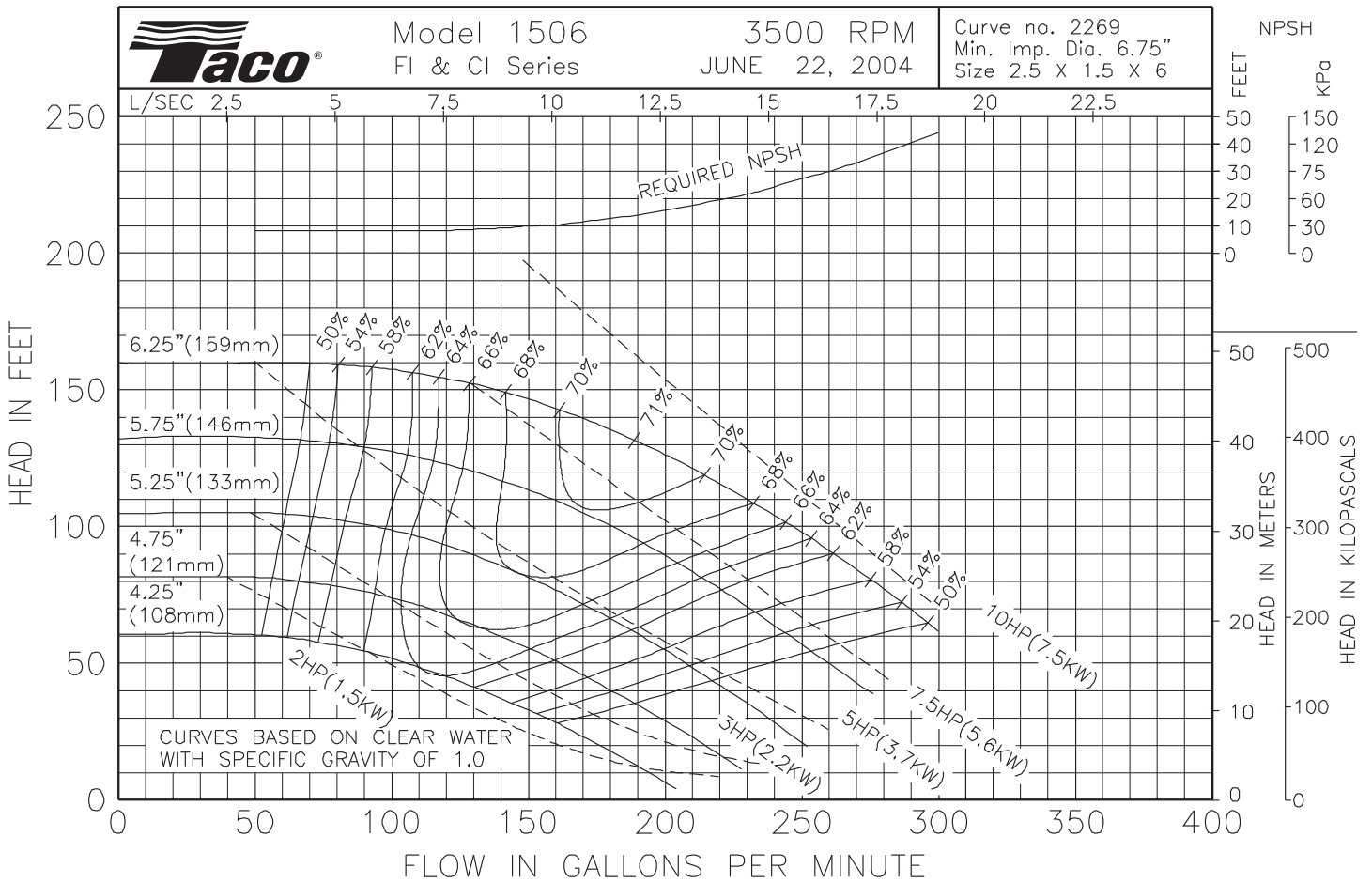
OPERATING SPECIFICATIONS

| | Standard | Optional |
|-------------|-------------------------|--------------------------|
| Flange | ANSI Class 125 | ANSI Class 250 |
| Pressure | 175 PSIG* (1210 KPA) | 300 PSIG** (2070 KPA) |
| Temperature | 250°F (120°C) | 250°F (120°C) |

Motors: All NEMA Standard (T Frame)
 * In accordance with ANSI Standard B16.1 Class 125
 ** In accordance with ANSI Standard B16.1 Class 250 Dim.

MAXIMUM ASSEMBLY WEIGHT

| Motor Frame | Weight Lbs (Kg) |
|-------------|--------------------|
| 182T - 184T | 266 (121) |
| 213T - 215T | 352 (160) |



Comments:

Do it Once. Do it Right.®

TACO, INC., 1160 Cranston Street, Cranston, RI 02920 Telephone: (401) 942-8000 FAX: (401) 942-2360.
 TACO (Canada), Ltd., 8450 Lawson Road, Unit #3, Milton, Ontario L9T 0J8. Telephone: 905/564-9422. FAX: 905/564-9436.

Visit our web site at: <http://www.taco-hvac.com>

Printed in USA
 Copyright 2010
 TACO, Inc.



Submittal Data Information

FI Series Pumps

301-1411

EFFECTIVE: MARCH 1, 2010

SUPERSEDES: OCTOBER 1, 2009

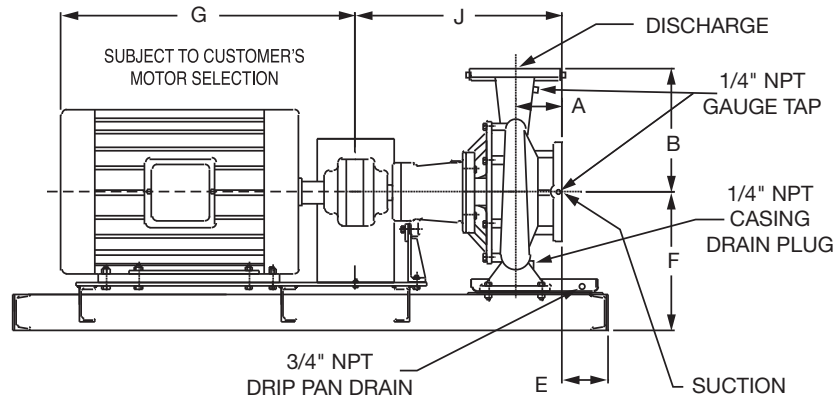
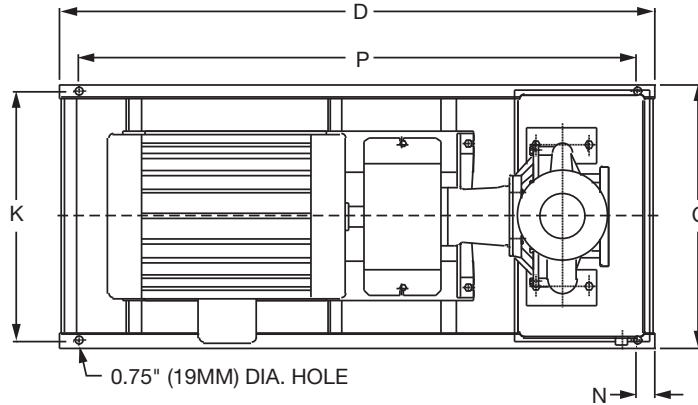
3500 RPM MODEL 1507

JOB _____ ENGINEER _____

CONTRACTOR _____ REP. _____

| ITEM NO. | MODEL NO. | IMPELLER DIA. | G.P.M. | HEAD/FT. | H.P. | ELEC. CHAR. |
|----------|-----------|---------------|--------|----------|------|-------------|
| | | | | | | |

WEIGHT _____ PUMP/MOTOR _____



DIMENSIONS

50 Cycle Performance Curves attached when applicable.

| Model No. Flange Size (Suction x Discharge) | Motor Frame | HP 3500 (RPM) | A | | B | | C | D | E | | F | G | J | | K | N | P |
|---|----------------|---------------------|----------------------|----------------------|----------------------|----------------------|-------------|-------------|----------------------|----------------------|----------------|-------------|----------------------|----------------------|-------------|--------------|-------------|
| | | | ANSI Class 125 | ANSI Class 250 | ANSI Class 125 | ANSI Class 250 | | | ANSI Class 125 | ANSI Class 250 | | | ANSI Class 125 | ANSI Class 250 | | | |
| 1507 2 1/2 x 1 1/2 (64 x 38) | 213T | 7.5 | 3.75 (95) | 4.06 (103) | 6.75 (171) | 7.00 (178) | 16.17 (411) | 39.0 (991) | 0.75 (19) | 0.43 (12) | 10.61 (269) | 17.94 (456) | 17.15 (436) | 17.46 (443) | 14.67 (373) | 2.00 (51) | 35.0 (889) |
| | 215T | 10 | | | | | 16.17 (411) | 39.0 (991) | 0.75 (19) | 0.43 (12) | | 18.19 (462) | | | 14.67 (373) | | 35.0 (889) |
| | 254T | 15 | | | | | 16.17 (411) | 39.0 (991) | 0.75 (19) | 0.43 (12) | | 21.69 (551) | | | 14.67 (373) | | 35.0 (889) |
| | 256T | 20 | | | | | 16.17 (411) | 39.0 (991) | 0.75 (19) | 0.43 (12) | | 23.19 (589) | | | 14.67 (373) | | 35.0 (889) |
| | 284TS | 25 | | | | | 19.17 (487) | 50.0 (1270) | 4.73 (120) | 4.41 (112) | | 24.94 (633) | | | 17.67 (449) | | 46.0 (1168) |

English dimensions are in inches. Metric dimensions are in millimeters. Metric data is presented in ().
Do not use for construction purposes unless certified.

MATERIALS OF CONSTRUCTION

| Item | BRONZE FITTED | | ALL IRON | |
|-----------------|------------------------------|------------------------------|------------------------------|------------------------------|
| | Std. Pump Constr. | Optional | Standard | Optional |
| Casing | Cast Iron ASTM A48 Class 30A | N/A | Cast Iron ASTM A48 Class 30A | N/A |
| Impeller | Bronze ASTM B584-836 | N/A | Cast Iron ASTM A48 Class 30A | N/A |
| Wear Ring | N/A | Bronze ASTM B584-932 SAE660 | N/A | N/A |
| Shaft | Carbon Steel AISI 1045 | St. Steel AISI 416 ASTM A582 | Carbon Steel AISI 1045 | St. Steel AISI 416 ASTM A582 |
| Shaft Sleeve | Bronze ASTM B584-932 SAE660 | St. Steel AISI 303 ASTM A276 | St. Steel AISI 303 ASTM A276 | N/A |
| Mech. Seal | Ceramic/EPT | CF | Ceramic/EPT | CF |
| Seal Flush Line | N/A | Copper | N/A | Stainless Steel |

CF - Consult Factory

N/A - Not Available

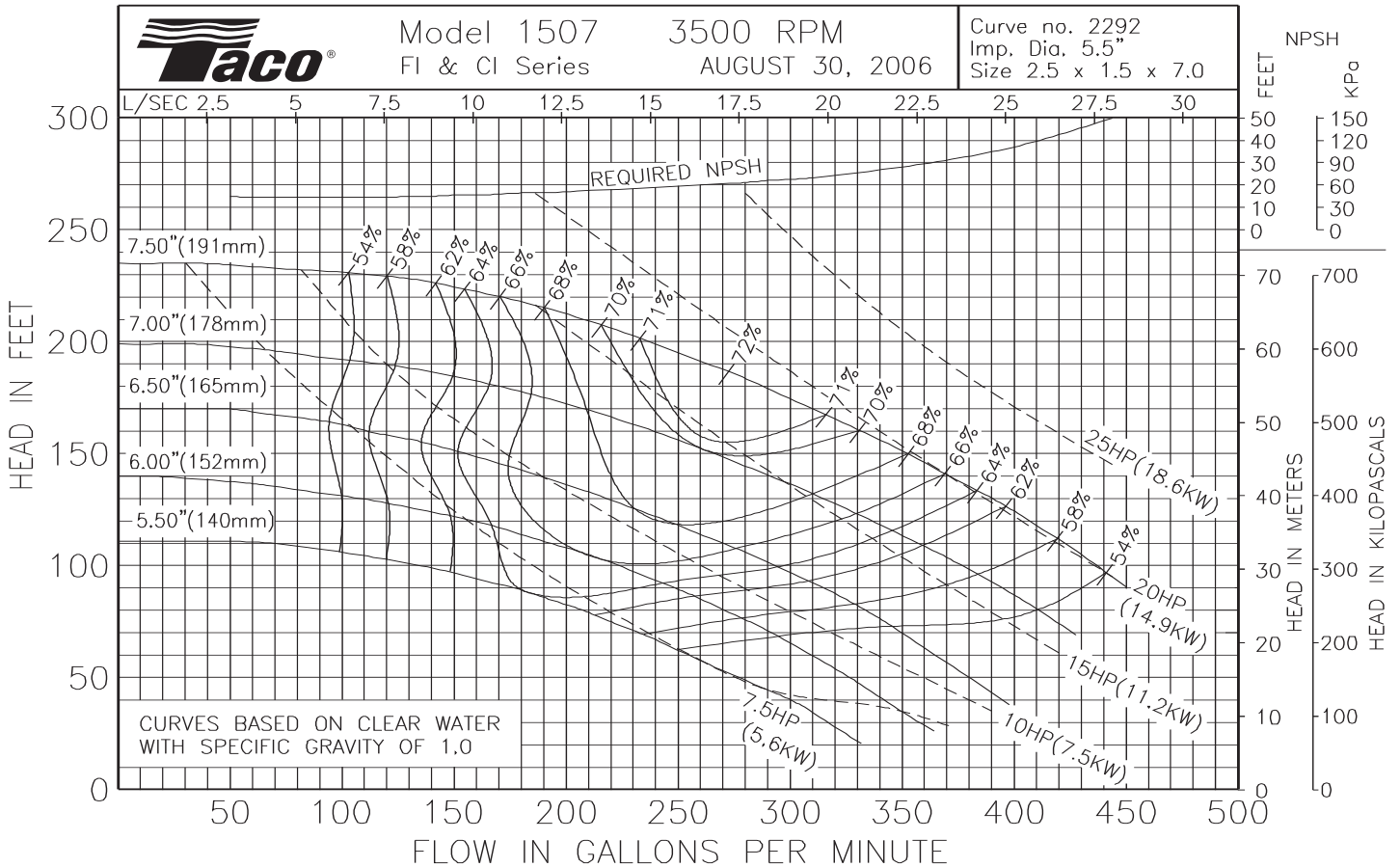
OPERATING SPECIFICATIONS

| | Standard | Optional |
|-------------|----------------------|-----------------------|
| Flange | ANSI Class 125 | ANSI Class 250 |
| Pressure | 175 PSIG* (1210 KPA) | 300 PSIG** (2070 KPA) |
| Temperature | 250°F (120°C) | 250°F (120°C) |

Motors: All NEMA Standard (T Frame)
 * In accordance with ANSI Standard B16.1 Class 125
 ** In accordance with ANSI Standard B16.1 Class 250 Dim.

MAXIMUM ASSEMBLY WEIGHT

| Motor Frame | Weight Lbs (Kg) |
|-------------|-----------------|
| 213T - 215T | 390 (177) |
| 254T - 256T | 463 (210) |
| 284T - 286T | 588 (267) |



Comments:

Do it Once. Do it Right.®

TACO, INC., 1160 Cranston Street, Cranston, RI 02920 Telephone: (401) 942-8000 FAX: (401) 942-2360.
TACO (Canada), Ltd., 8450 Lawson Road, Unit #3, Milton, Ontario L9T 0J8. Telephone: 905/564-9422. FAX: 905/564-9436.
 Visit our web site at: <http://www.taco-hvac.com>

Printed in USA
 Copyright 2010
 TACO, Inc.



Submittal Data Information

FI Series Pumps

301-1423

EFFECTIVE: NOVEMBER 1, 2010

SUPERSEDES: MARCH 1, 2010

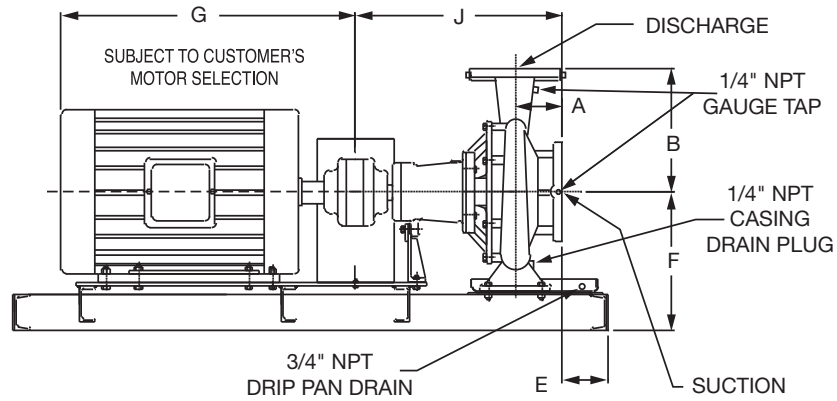
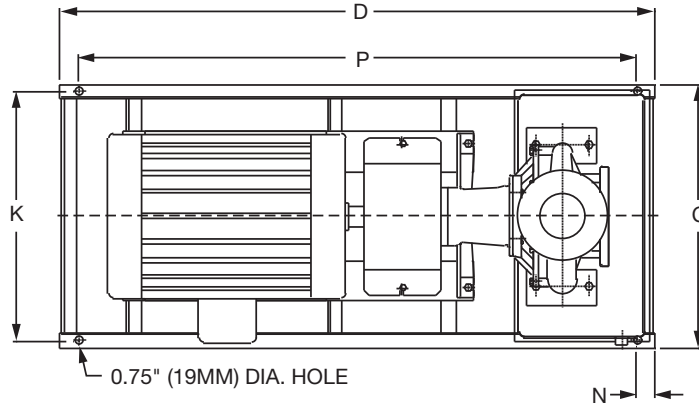
3500 RPM MODEL 1509

JOB _____ ENGINEER _____

CONTRACTOR _____ REP. _____

| ITEM NO. | MODEL NO. | IMPELLER DIA. | G.P.M. | HEAD/FT. | H.P. | ELEC. CHAR. |
|----------|-----------|---------------|--------|----------|------|-------------|
| | | | | | | |

WEIGHT _____ PUMP/MOTOR _____



DIMENSIONS

50 Cycle Performance Curves attached when applicable.

| Model No. Flange Size (Suction x Discharge) | Motor Frame | HP 3500 (RPM) | A | | B | | C | D | E | | F | G | J | | K | N | P |
|---|----------------|---------------------|----------------------|----------------------|----------------------|----------------------|-------------|-------------|----------------------|----------------------|----------------|-------------|----------------------|----------------------|-------------|--------------|-------------|
| | | | ANSI Class 125 | ANSI Class 250 | ANSI Class 125 | ANSI Class 250 | | | ANSI Class 125 | ANSI Class 250 | | | ANSI Class 125 | ANSI Class 250 | | | |
| 1509 2 1/2 x 1 1/2 (64 x 38) | 254T | 15 | 4.56 (116) | 4.87 (124) | 8.00 (203) | 8.25 (210) | 19.17 (487) | 50.0 (1270) | 1.11 (28) | 0.80 (20) | 11.40 (290) | 21.69 (551) | 23.03 (585) | 23.34 (593) | 17.67 (449) | 2.00 (51) | 46.0 (1168) |
| | 256T | 20 | | | | | 19.17 (487) | 50.0 (1270) | 1.11 (28) | 0.80 (20) | | 23.13 (589) | | | 17.67 (449) | | 46.0 (1168) |
| | 284TS | 25 | | | | | 19.17 (487) | 50.0 (1270) | 1.11 (28) | 0.80 (20) | | 24.94 (633) | | | 17.67 (449) | | 46.0 (1168) |
| | 286TS | 30 | | | | | 19.17 (487) | 50.0 (1270) | 1.11 (28) | 0.80 (20) | | 25.06 (637) | | | 17.67 (449) | | 46.0 (1168) |
| | 324TS | 40 | | | | | 19.17 (487) | 50.0 (1270) | 1.11 (28) | 0.80 (20) | | 26.69 (678) | | | 17.67 (449) | | 46.0 (1168) |

English dimensions are in inches. Metric dimensions are in millimeters. Metric data is presented in ().
Do not use for construction purposes unless certified.

MATERIALS OF CONSTRUCTION

| Item | BRONZE FITTED | | ALL IRON | |
|-----------------|--------------------------------------|--------------------------------------|------------------------------------|------------------------------------|
| | Std. Pump Constr. | Optional | Standard | Optional |
| Casing | Cast Iron ASTM A48 Class 30A | N/A | Cast Iron ASTM A48 Class 30A | N/A |
| Impeller | Bronze ASTM B584-836 | N/A | Cast Iron ASTM A48 Class 30A | N/A |
| Wear Ring | N/A | Bronze ASTM B584-932 SAE660 | N/A | N/A |
| Shaft | Carbon Steel AISI 1045 | St. Steel AISI 416 ASTM A582 | Carbon Steel AISI 1045 | St. Steel AISI 416 ASTM A582 |
| Shaft Sleeve | Bronze ASTM B584-932 SAE660 | St. Steel AISI 303 ASTM A276 | St. Steel AISI 303 ASTM A276 | N/A |
| Mech. Seal | Ceramic/ EPT | CF | Ceramic/ EPT | CF |
| Seal Flush Line | N/A | Copper | N/A | Stainless Steel |

CF - Consult Factory

N/A - Not Available

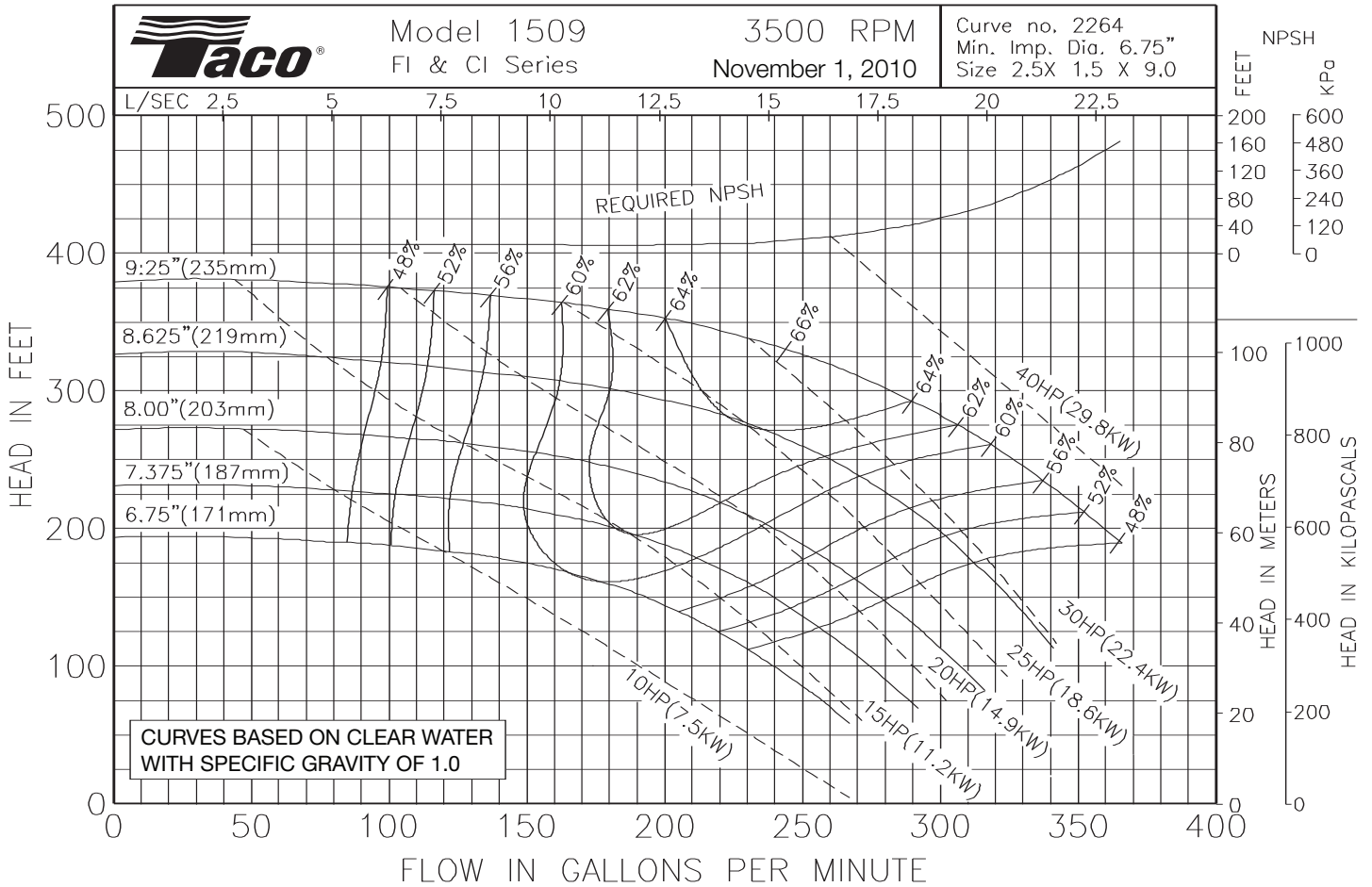
OPERATING SPECIFICATIONS

| | Standard | Optional |
|-------------|-------------------------|--------------------------|
| Flange | ANSI Class 125 | ANSI Class 250 |
| Pressure | 175 PSIG* (1210 KPA) | 300 PSIG** (2070 KPA) |
| Temperature | 250°F (120°C) | 250°F (120°C) |

Motors: All NEMA Standard (T Frame)
 * In accordance with ANSI Standard B16.1 Class 125
 ** In accordance with ANSI Standard B16.1 Class 250 Dim.

MAXIMUM ASSEMBLY WEIGHT

| Motor Frame | Weight Lbs (Kg) |
|-------------|--------------------|
| 254T - 256T | 564 (256) |
| 284T - 286T | 688 (312) |
| 324T - 326T | 885 (401) |



Comments:

Do it Once. Do it Right.®

TACO, INC., 1160 Cranston Street, Cranston, RI 02920 Telephone: (401) 942-8000 FAX: (401) 942-2360.
TACO (Canada), Ltd., 8450 Lawson Road, Unit #3, Milton, Ontario L9T 0J8. Telephone: 905/564-9422. FAX: 905/564-9436.
 Visit our web site at: <http://www.taco-hvac.com>

Printed in USA
 Copyright 2010
 TACO, Inc.



Submittal Data Information

FI Series Pumps

301-1478

EFFECTIVE: MARCH 1, 2010

SUPERSEDES: OCTOBER 1, 2009

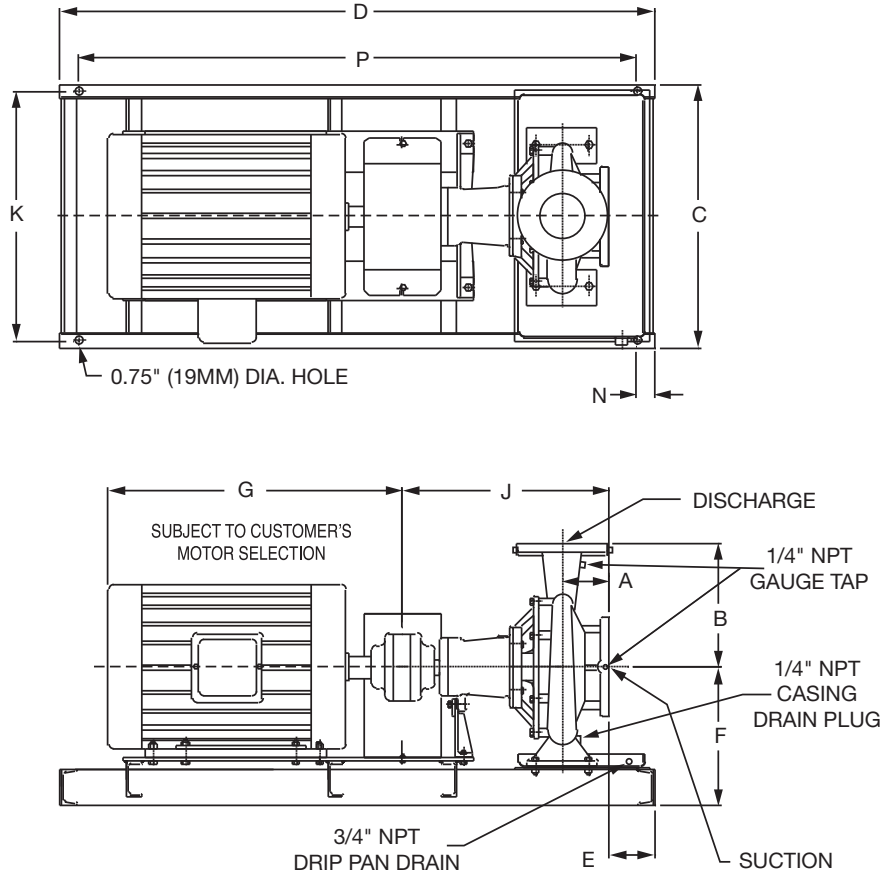
3500 RPM MODEL 2007

JOB _____ ENGINEER _____

CONTRACTOR _____ REP. _____

| ITEM NO. | MODEL NO. | IMPELLER DIA. | G.P.M. | HEAD/FT. | H.P. | ELEC. CHAR. |
|----------|-----------|---------------|--------|----------|------|-------------|
| | | | | | | |

WEIGHT _____ PUMP/MOTOR _____



DIMENSIONS

50 Cycle Performance Curves attached when applicable.

| Model No. Flange Size (Suction x Discharge) | Motor Frame | HP 3500 (RPM) | A | | B | | C | D | E | | F | G | J | | K | N | P |
|---|----------------|---------------------|----------------------|----------------------|----------------------|----------------------|-------------|-------------|----------------------|----------------------|----------------|-------------|----------------------|----------------------|-------------|--------------|-------------|
| | | | ANSI Class 125 | ANSI Class 250 | ANSI Class 125 | ANSI Class 250 | | | ANSI Class 125 | ANSI Class 250 | | | ANSI Class 125 | ANSI Class 250 | | | |
| 2007 2½ x 2 (64 x 51) | 213T | 7.5 | 4.72 (120) | 5.03 (128) | 7.75 (197) | 8.00 (203) | 16.17 (411) | 39.0 (991) | 1.30 (33) | 0.99 (25) | 10.49 (266) | 17.94 (456) | 18.37 (467) | 18.68 (474) | 14.67 (373) | 2.00 (51) | 35.0 (889) |
| | 215T | 10 | | | | | 16.17 (411) | 39.0 (991) | 1.30 (33) | 0.99 (25) | | 18.19 (462) | | | 14.67 (373) | | 35.0 (889) |
| | 254T | 15 | | | | | 16.17 (411) | 39.0 (991) | 1.30 (33) | 0.99 (25) | | 21.69 (551) | | | 14.67 (373) | | 35.0 (889) |
| | 256T | 20 | | | | | 16.17 (411) | 39.0 (991) | 1.30 (33) | 0.99 (25) | | 23.19 (589) | | | 14.67 (373) | | 35.0 (889) |
| | 284TS | 25 | | | | | 19.17 (487) | 50.0 (1270) | 3.45 (88) | 3.13 (80) | | 24.94 (633) | | | 17.67 (449) | | 46.0 (1168) |

English dimensions are in inches. Metric dimensions are in millimeters. Metric data is presented in ().
Do not use for construction purposes unless certified.

MATERIALS OF CONSTRUCTION

| Item | BRONZE FITTED | | ALL IRON | |
|-----------------|--------------------------------------|--------------------------------------|------------------------------------|------------------------------------|
| | Std. Pump Constr. | Optional | Standard | Optional |
| Casing | Cast Iron ASTM A48 Class 30A | N/A | Cast Iron ASTM A48 Class 30A | N/A |
| Impeller | Bronze ASTM B584-836 | N/A | Cast Iron ASTM A48 Class 30A | N/A |
| Wear Ring | N/A | Bronze ASTM B584-932 SAE660 | N/A | N/A |
| Shaft | Carbon Steel AISI 1045 | St. Steel AISI 416 ASTM A582 | Carbon Steel AISI 1045 | St. Steel AISI 416 ASTM A582 |
| Shaft Sleeve | Bronze ASTM B584-932 SAE660 | St. Steel AISI 303 ASTM A276 | St. Steel AISI 303 ASTM A276 | N/A |
| Mech. Seal | Ceramic/ EPT | CF | Ceramic/ EPT | CF |
| Seal Flush Line | N/A | Copper | N/A | Stainless Steel |

CF - Consult Factory

N/A - Not Available

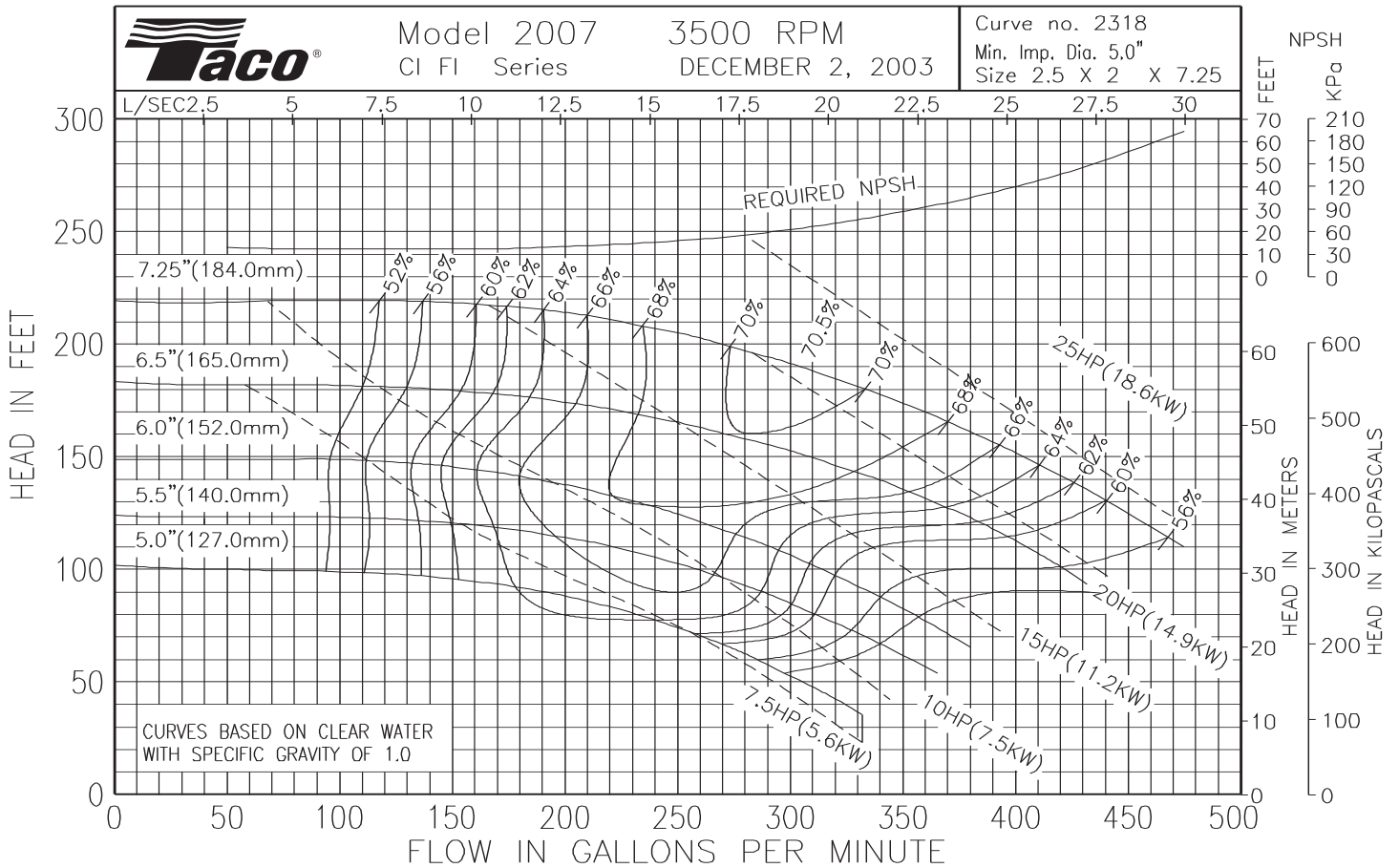
OPERATING SPECIFICATIONS

| | Standard | Optional |
|-------------|-------------------------|--------------------------|
| Flange | ANSI Class 125 | ANSI Class 250 |
| Pressure | 175 PSIG* (1210 KPA) | 300 PSIG** (2070 KPA) |
| Temperature | 250°F (120°C) | 250°F (120°C) |

Motors: All NEMA Standard (T Frame)
 * In accordance with ANSI Standard B16.1 Class 125
 ** In accordance with ANSI Standard B16.1 Class 250 Dim.

MAXIMUM ASSEMBLY WEIGHT

| Motor Frame | Weight Lbs (Kg) |
|-------------|--------------------|
| 213T - 215T | 413 (187) |
| 254T - 256T | 486 (220) |
| 284T - 286T | 611 (277) |



Comments:

Do it Once. Do it Right.®

TACO, INC., 1160 Cranston Street, Cranston, RI 02920 Telephone: (401) 942-8000 FAX: (401) 942-2360.
TACO (Canada), Ltd., 8450 Lawson Road, Unit #3, Milton, Ontario L9T 0J8. Telephone: 905/564-9422. FAX: 905/564-9436.
 Visit our web site at: <http://www.taco-hvac.com>

Printed in USA
 Copyright 2010
 TACO, Inc.



Submittal Data Information

FI Series Pumps

301-1481

EFFECTIVE: NOVEMBER 1, 2010

SUPERSEDES: MARCH 1, 2010

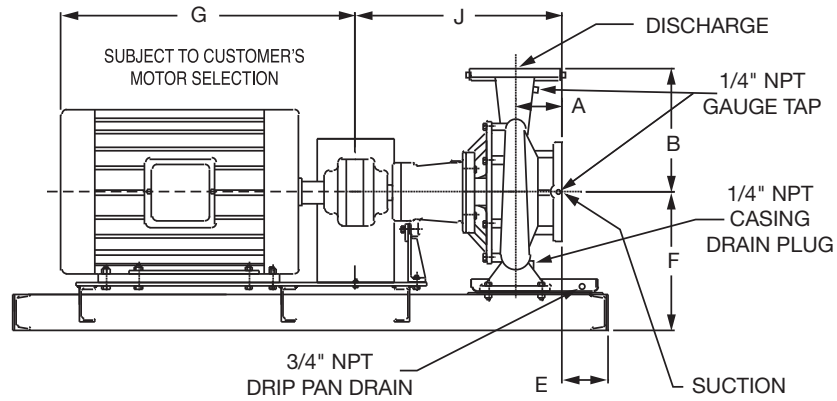
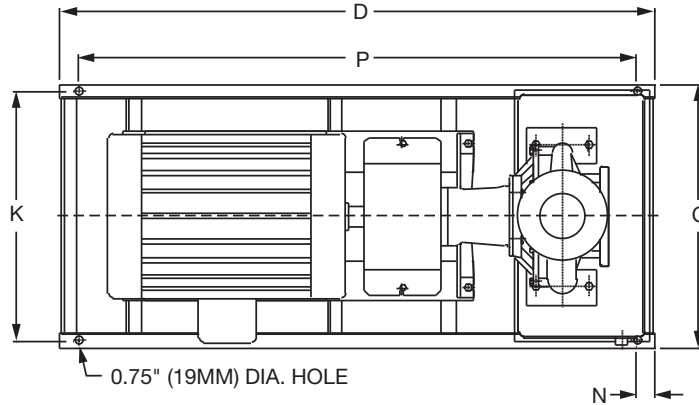
3500 RPM MODEL 2009

JOB _____ ENGINEER _____

CONTRACTOR _____ REP. _____

| ITEM NO. | MODEL NO. | IMPELLER DIA. | G.P.M. | HEAD/FT. | H.P. | ELEC. CHAR. |
|----------|-----------|---------------|--------|----------|------|-------------|
|----------|-----------|---------------|--------|----------|------|-------------|

WEIGHT _____ PUMP/MOTOR _____



| Model No. Flange Size (Suction x Discharge) | Motor Frame | HP 3500 (RPM) | A | | B | | C | D | E | | F | G | J | | K | N | P |
|---|----------------|---------------------|----------------------|----------------------|----------------------|----------------------|-------------|-------------|----------------------|----------------------|----------------|-------------|----------------------|----------------------|-------------|--------------|-------------|
| | | | ANSI Class 125 | ANSI Class 250 | ANSI Class 125 | ANSI Class 250 | | | ANSI Class 125 | ANSI Class 250 | | | ANSI Class 125 | ANSI Class 250 | | | |
| 2009 2 1/2 x 2 (64 x 51) | 215T | 10 | 4.72 (120) | 5.03 (128) | 8.75 (222) | 9.00 (229) | 16.17 (411) | 41.5 (1054) | 1.04 (26) | 0.73 (19) | 11.28 (287) | 17.94 (456) | 23.45 (596) | 23.76 (604) | 14.67 (373) | 2.00 (51) | 37.5 (953) |
| | 254T | 15 | | | | | 19.17 (487) | 50.0 (1270) | 0.95 (24) | 0.64 (16) | | 21.69 (551) | | | 17.67 (449) | | 46.0 (1166) |
| | 256T | 20 | | | | | 19.17 (487) | 50.0 (1270) | 0.95 (24) | 0.64 (16) | | 23.13 (589) | | | 17.67 (449) | | 46.0 (1166) |
| | 284TS | 25 | | | | | 19.17 (487) | 50.0 (1270) | 0.95 (24) | 0.64 (16) | | 24.94 (633) | | | 17.67 (449) | | 46.0 (1166) |
| | 286TS | 30 | | | | | 19.17 (487) | 50.0 (1270) | 0.95 (24) | 0.64 (16) | | 25.06 (637) | | | 17.67 (449) | | 46.0 (1166) |
| | 324TS | 40 | | | | | 19.17 (487) | 50.0 (1270) | 0.95 (24) | 0.64 (16) | | 26.69 (678) | | | 17.67 (449) | | 46.0 (1166) |
| | 326TS | 50 | | | | | 19.17 (487) | 50.0 (1270) | 0.95 (24) | 0.64 (16) | | 27.69 (703) | | | 17.67 (449) | | 46.0 (1166) |

English dimensions are in inches. Metric dimensions are in millimeters. Metric data is presented in ().
Do not use for construction purposes unless certified.

MATERIALS OF CONSTRUCTION

| Item | BRONZE FITTED | | ALL IRON | |
|-----------------|--------------------------------------|--------------------------------------|------------------------------------|------------------------------------|
| | Std. Pump Constr. | Optional | Standard | Optional |
| Casing | Cast Iron ASTM A48 Class 30A | N/A | Cast Iron ASTM A48 Class 30A | N/A |
| Impeller | Bronze ASTM B584-836 | N/A | Cast Iron ASTM A48 Class 30A | N/A |
| Wear Ring | N/A | Bronze ASTM B584-932 SAE660 | N/A | N/A |
| Shaft | Carbon Steel AISI 1045 | St. Steel AISI 416 ASTM A582 | Carbon Steel AISI 1045 | St. Steel AISI 416 ASTM A582 |
| Shaft Sleeve | Bronze ASTM B584-932 SAE660 | St. Steel AISI 303 ASTM A276 | St. Steel AISI 303 ASTM A276 | N/A |
| Mech. Seal | Ceramic/ EPT | CF | Ceramic/ EPT | CF |
| Seal Flush Line | N/A | Copper | N/A | Stainless Steel |

CF - Consult Factory

N/A - Not Available

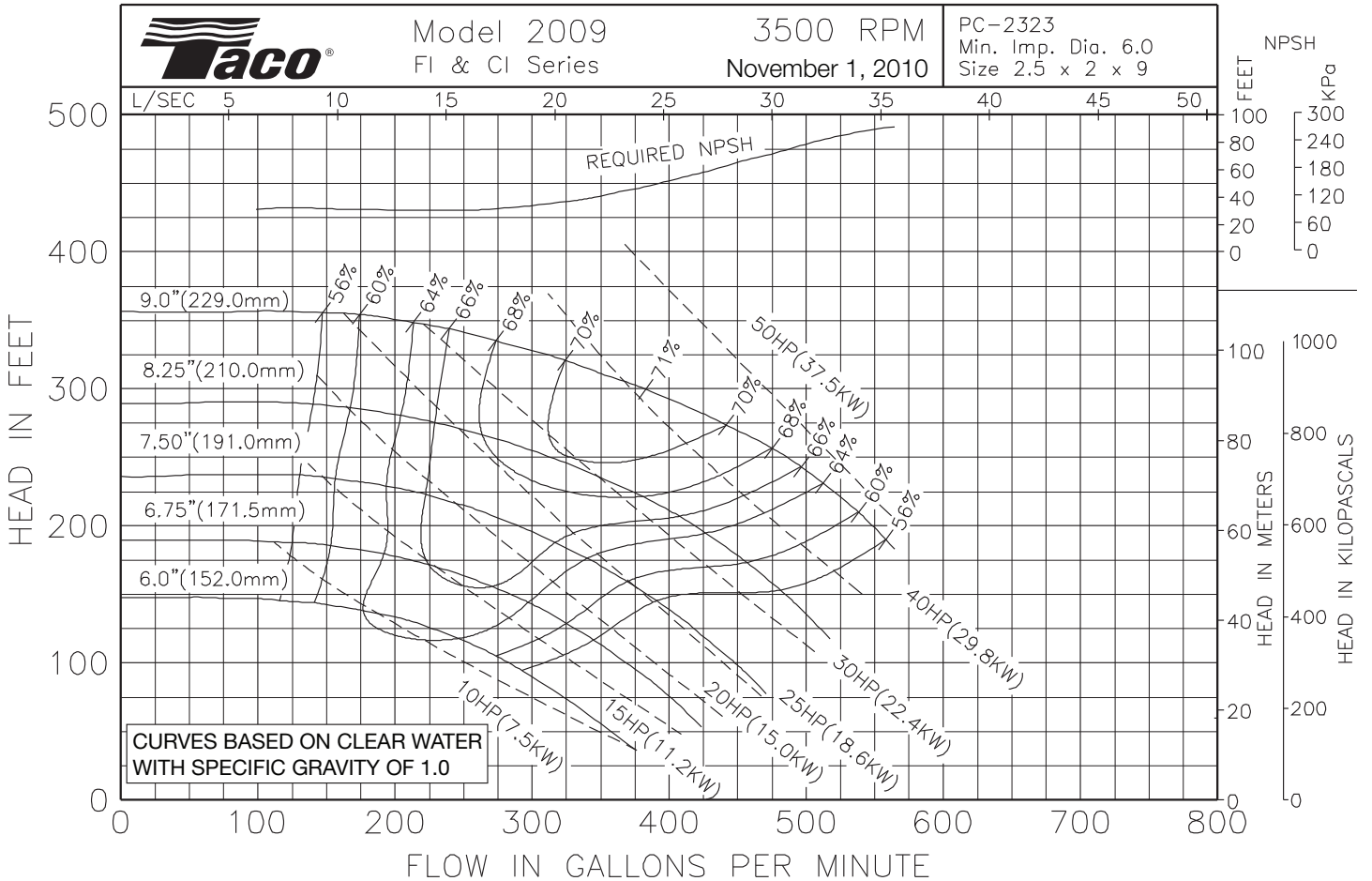
OPERATING SPECIFICATIONS

| | Standard | Optional |
|-------------|-------------------------|--------------------------|
| Flange | ANSI Class 125 | ANSI Class 250 |
| Pressure | 175 PSIG* (1210 KPA) | 300 PSIG** (2070 KPA) |
| Temperature | 250°F (120°C) | 250°F (120°C) |

Motors: All NEMA Standard (T Frame)
 * In accordance with ANSI Standard B16.1 Class 125
 ** In accordance with ANSI Standard B16.1 Class 250 Dim.

MAXIMUM ASSEMBLY WEIGHT

| Motor Frame | Weight Lbs (Kg) |
|-------------|--------------------|
| 213T - 215T | 422 (191) |
| 254T - 256T | 495 (225) |
| 284T - 286T | 619 (281) |
| 324T - 326T | 812 (368) |



Comments:

Do it Once. Do it Right.®

TACO, INC., 1160 Cranston Street, Cranston, RI 02920 Telephone: (401) 942-8000 FAX: (401) 942-2360.
 TACO (Canada), Ltd., 8450 Lawson Road, Unit #3, Milton, Ontario L9T 0J8. Telephone: 905/564-9422. FAX: 905/564-9436.
 Visit our web site at: <http://www.taco-hvac.com>

Printed in USA
 Copyright 2010
 TACO, Inc.



Submittal Data Information

FI Series Pumps

301-1405

EFFECTIVE: MARCH 1, 2010

SUPERSEDES: OCTOBER 1, 2009

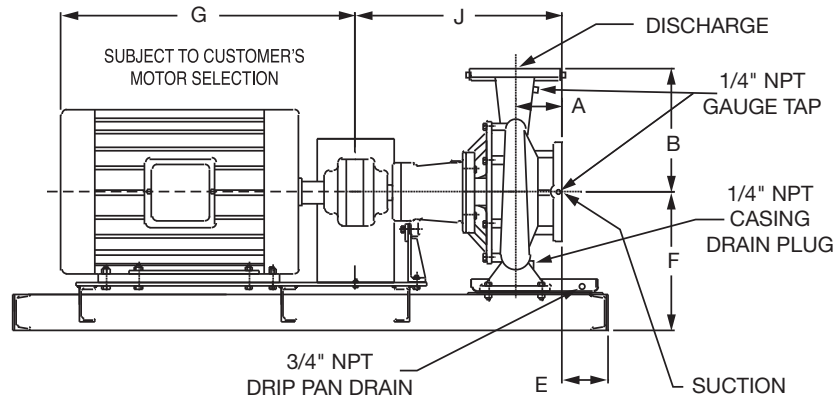
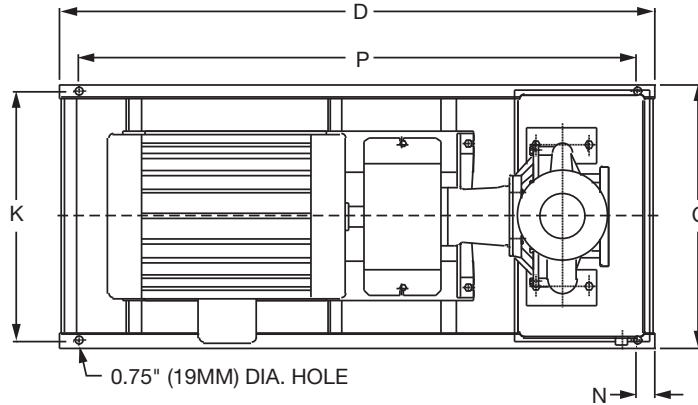
3500 RPM MODEL 2506

JOB _____ ENGINEER _____

CONTRACTOR _____ REP. _____

| ITEM NO. | MODEL NO. | IMPELLER DIA. | G.P.M. | HEAD/FT. | H.P. | ELEC. CHAR. |
|----------|-----------|---------------|--------|----------|------|-------------|
| | | | | | | |

WEIGHT _____ PUMP/MOTOR _____



DIMENSIONS

50 Cycle Performance Curves attached when applicable.

| Model No. Flange Size (Suction x Discharge) | Motor Frame | HP 3500 (RPM) | A | | B | | C | D | E | | F | G | J | | K | N | P |
|---|----------------|---------------------|----------------------|----------------------|----------------------|----------------------|-------------|------------|----------------------|----------------------|----------------|-------------|----------------------|----------------------|-------------|--------------|------------|
| | | | ANSI Class 125 | ANSI Class 250 | ANSI Class 125 | ANSI Class 250 | | | ANSI Class 125 | ANSI Class 250 | | | ANSI Class 125 | ANSI Class 250 | | | |
| 2506 3 x 2 1/2 (76 x 64) | 184T | 5 | 3.74 (95) | 4.11 (104) | 7.25 (184) | 7.56 (192) | 14.17 (360) | 32.0 (813) | 1.06 (27) | 0.69 (18) | 10.61 (269) | 16.56 (421) | 16.97 (431) | 17.34 (440) | 12.67 (322) | 2.00 (51) | 28.0 (711) |
| | 213T | 7.5 | | | | | 16.17 (411) | 39.0 (991) | 0.93 (24) | 0.56 (14) | | 17.94 (456) | | | 14.67 (373) | | 35.0 (889) |
| | 215T | 10 | | | | | 16.17 (411) | 39.0 (991) | 0.93 (24) | 0.56 (14) | | 18.19 (462) | | | 14.67 (373) | | 35.0 (889) |
| | 254T | 15 | | | | | 16.17 (411) | 39.0 (991) | 0.93 (24) | 0.56 (14) | | 21.69 (551) | | | 14.67 (373) | | 35.0 (889) |

English dimensions are in inches. Metric dimensions are in millimeters. Metric data is presented in ().
Do not use for construction purposes unless certified.

MATERIALS OF CONSTRUCTION

| Item | BRONZE FITTED | | ALL IRON | |
|-----------------|--------------------------------------|--------------------------------------|------------------------------------|------------------------------------|
| | Std. Pump Constr. | Optional | Standard | Optional |
| Casing | Cast Iron ASTM A48 Class 30A | N/A | Cast Iron ASTM A48 Class 30A | N/A |
| Impeller | Bronze ASTM B584-836 | N/A | Cast Iron ASTM A48 Class 30A | N/A |
| Wear Ring | N/A | Bronze ASTM B584-932 SAE660 | N/A | N/A |
| Shaft | Carbon Steel AISI 1045 | St. Steel AISI 416 ASTM A582 | Carbon Steel AISI 1045 | St. Steel AISI 416 ASTM A582 |
| Shaft Sleeve | Bronze ASTM B584-932 SAE660 | St. Steel AISI 303 ASTM A276 | St. Steel AISI 303 ASTM A276 | N/A |
| Mech. Seal | Ceramic/ EPT | CF | Ceramic/ EPT | CF |
| Seal Flush Line | N/A | Copper | N/A | Stainless Steel |

CF - Consult Factory

N/A - Not Available

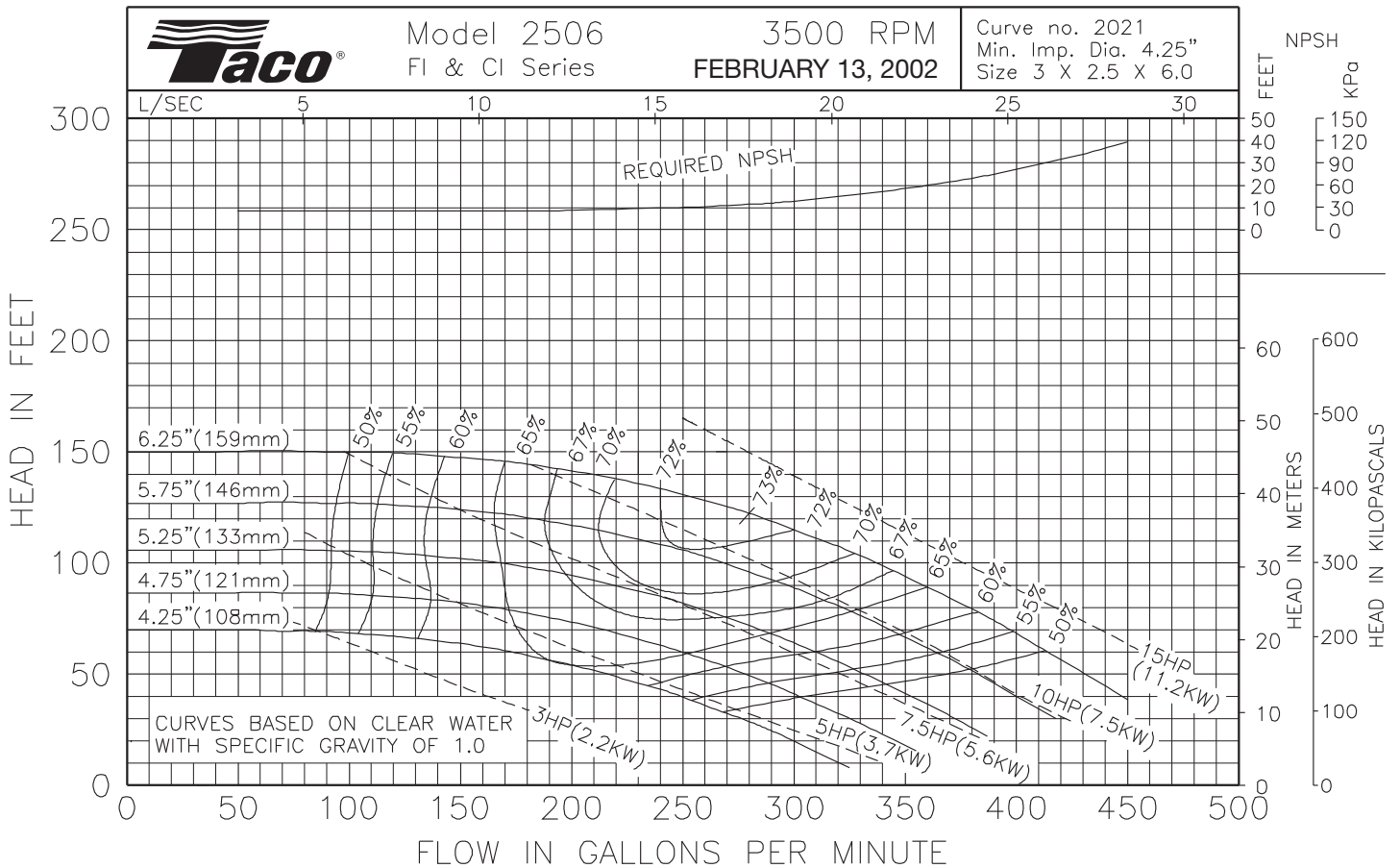
OPERATING SPECIFICATIONS

| | Standard | Optional |
|-------------|-------------------------|--------------------------|
| Flange | ANSI Class 125 | ANSI Class 250 |
| Pressure | 175 PSIG* (1210 KPA) | 300 PSIG** (2070 KPA) |
| Temperature | 250°F (120°C) | 250°F (120°C) |

Motors: All NEMA Standard (T Frame)
 * In accordance with ANSI Standard B16.1 Class 125
 ** In accordance with ANSI Standard B16.1 Class 250 Dim.

MAXIMUM ASSEMBLY WEIGHT

| Motor Frame | Weight Lbs (Kg) |
|-------------|--------------------|
| 182T - 184T | 322 (146) |
| 213T - 215T | 408 (185) |
| 254T - 256T | 493 (224) |



Comments:

Do it Once. Do it Right.®

TACO, INC., 1160 Cranston Street, Cranston, RI 02920 Telephone: (401) 942-8000 FAX: (401) 942-2360.
TACO (Canada), Ltd., 8450 Lawson Road, Unit #3, Milton, Ontario L9T 0J8. Telephone: 905/564-9422. FAX: 905/564-9436.
 Visit our web site at: <http://www.taco-hvac.com>

Printed in USA
 Copyright 2010
 TACO, Inc.



Submittal Data Information

FI Series Pumps

301-1414

EFFECTIVE: NOVEMBER 1, 2010

SUPERSEDES: MARCH 1, 2010

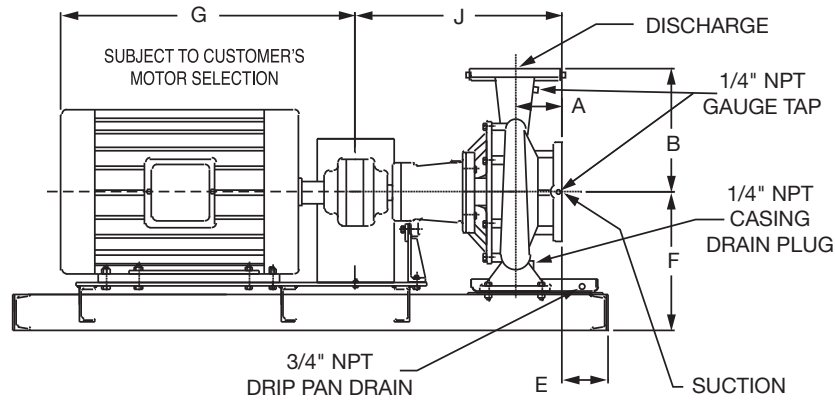
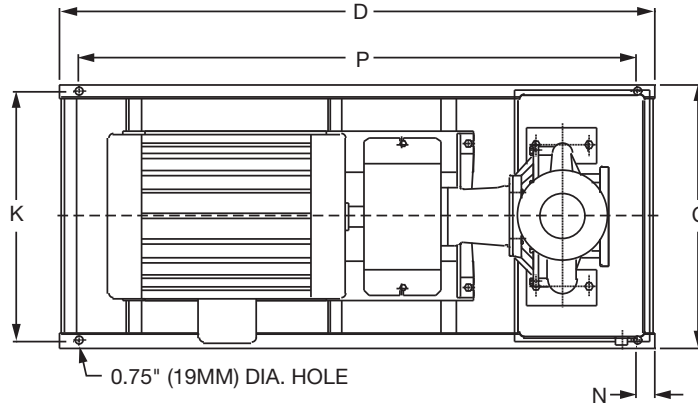
3500 RPM MODEL 2507

JOB _____ ENGINEER _____

CONTRACTOR _____ REP. _____

| ITEM NO. | MODEL NO. | IMPELLER DIA. | G.P.M. | HEAD/FT. | H.P. | ELEC. CHAR. |
|----------|-----------|---------------|--------|----------|------|-------------|
| | | | | | | |

WEIGHT _____ PUMP/MOTOR _____



DIMENSIONS

50 Cycle Performance Curves attached when applicable.

| Model No. Flange Size (Suction x Discharge) | Motor Frame | HP 3500 (RPM) | A | | B | | C | D | E | | F | G | J | | K | N | P |
|---|----------------|---------------------|----------------------|----------------------|----------------------|----------------------|-------------|-------------|----------------------|----------------------|----------------|-------------|----------------------|----------------------|-------------|--------------|-------------|
| | | | ANSI Class 125 | ANSI Class 250 | ANSI Class 125 | ANSI Class 250 | | | ANSI Class 125 | ANSI Class 250 | | | ANSI Class 125 | ANSI Class 250 | | | |
| 2507 3 x 2 1/2 (76 x 64) | 254T | 15 | 4.72 (120) | 5.09 (129) | 7.83 (199) | 8.14 (207) | 19.17 (487) | 50.0 (1270) | 0.79 (20) | 0.43 (11) | 11.40 (290) | 21.69 (551) | 23.53 (598) | 23.90 (607) | 17.67 (449) | 2.00 (51) | 46.0 (1168) |
| | 256T | 20 | | | | | 19.17 (487) | 50.0 (1270) | 0.79 (20) | 0.43 (11) | | 23.19 (589) | | | 17.67 (449) | | 46.0 (1168) |
| | 284TS | 25 | | | | | 19.17 (487) | 50.0 (1270) | 0.79 (20) | 0.43 (11) | | 24.94 (633) | | | 17.67 (449) | | 46.0 (1168) |
| | 286TS | 30 | | | | | 19.17 (487) | 50.0 (1270) | 0.79 (20) | 0.43 (11) | | 25.06 (637) | | | 17.67 (449) | | 46.0 (1168) |
| | 324TS | 40 | | | | | 19.17 (487) | 50.0 (1270) | 0.79 (20) | 0.43 (11) | | 26.69 (678) | | | 17.67 (449) | | 46.0 (1168) |

English dimensions are in inches. Metric dimensions are in millimeters. Metric data is presented in ().
Do not use for construction purposes unless certified.

MATERIALS OF CONSTRUCTION

| Item | BRONZE FITTED | | ALL IRON | |
|-----------------|------------------------------|------------------------------|------------------------------|------------------------------|
| | Std. Pump Constr. | Optional | Standard | Optional |
| Casing | Cast Iron ASTM A48 Class 30A | N/A | Cast Iron ASTM A48 Class 30A | N/A |
| Impeller | Bronze ASTM B584-836 | N/A | Cast Iron ASTM A48 Class 30A | N/A |
| Wear Ring | N/A | Bronze ASTM B584-932 SAE660 | N/A | N/A |
| Shaft | Carbon Steel AISI 1045 | St. Steel AISI 416 ASTM A582 | Carbon Steel AISI 1045 | St. Steel AISI 416 ASTM A582 |
| Shaft Sleeve | Bronze ASTM B584-932 SAE660 | St. Steel AISI 303 ASTM A276 | St. Steel AISI 303 ASTM A276 | N/A |
| Mech. Seal | Ceramic/EPT | CF | Ceramic/EPT | CF |
| Seal Flush Line | N/A | Copper | N/A | Stainless Steel |

CF - Consult Factory

N/A - Not Available

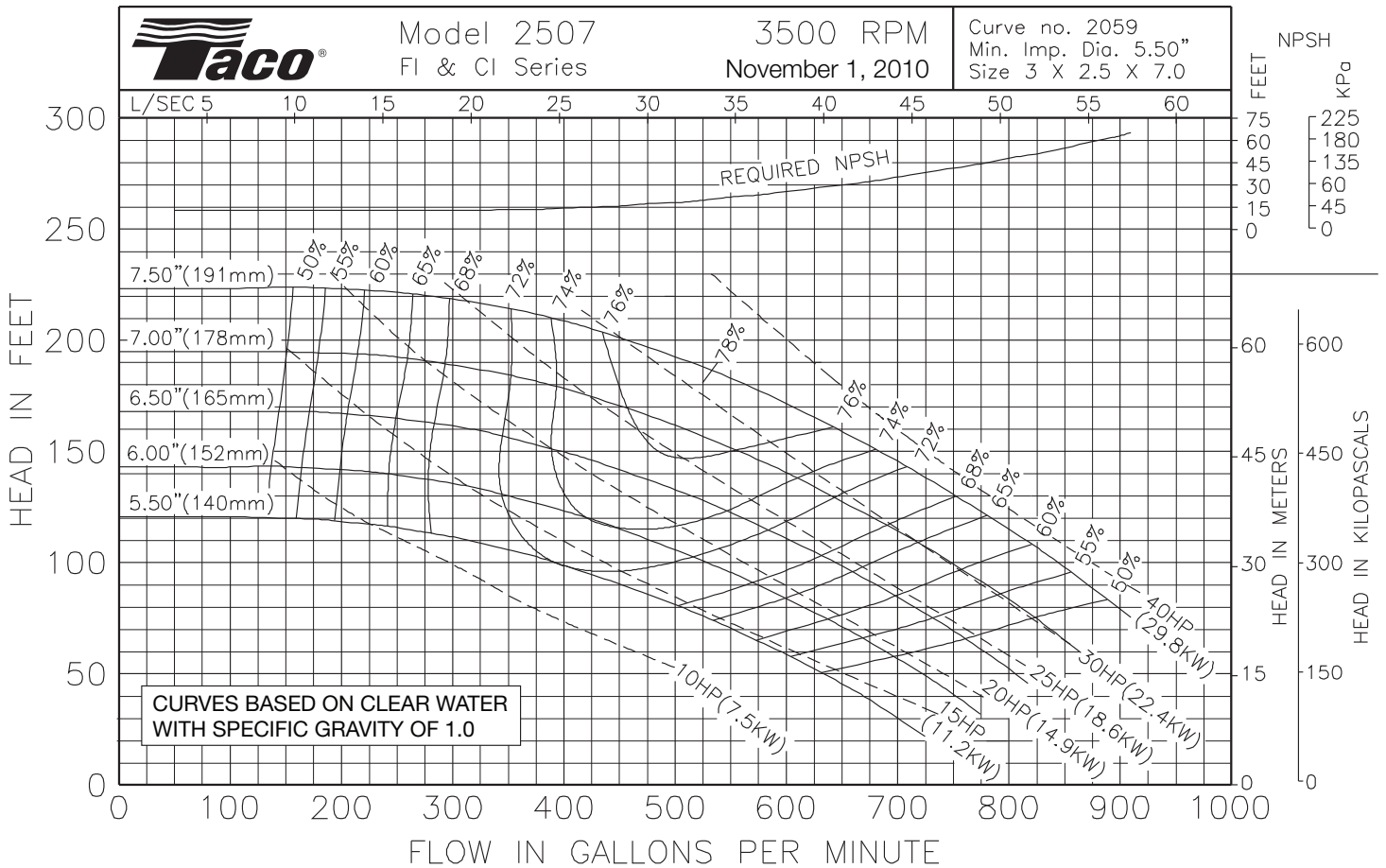
OPERATING SPECIFICATIONS

| | Standard | Optional |
|-------------|----------------------|-----------------------|
| Flange | ANSI Class 125 | ANSI Class 250 |
| Pressure | 175 PSIG* (1210 KPA) | 300 PSIG** (2070 KPA) |
| Temperature | 250°F (120°C) | 250°F (120°C) |

Motors: All NEMA Standard (T Frame)
 * In accordance with ANSI Standard B16.1 Class 125
 ** In accordance with ANSI Standard B16.1 Class 250 Dim.

MAXIMUM ASSEMBLY WEIGHT

| Motor Frame | Weight Lbs (Kg) |
|-------------|-----------------|
| 254T - 256T | 525 (238) |
| 284T - 286T | 649 (294) |
| 324T - 326T | 846 (384) |



Comments:

Do it Once. Do it Right.®

TACO, INC., 1160 Cranston Street, Cranston, RI 02920 Telephone: (401) 942-8000 FAX: (401) 942-2360.
TACO (Canada), Ltd., 8450 Lawson Road, Unit #3, Milton, Ontario L9T 0J8. Telephone: 905/564-9422. FAX: 905/564-9436.
 Visit our web site at: <http://www.taco-hvac.com>

Printed in USA
 Copyright 2010
 TACO, Inc.



Submittal Data Information

FI Series Pumps

301-1467

EFFECTIVE: NOVEMBER 1, 2010

SUPERSEDES: MARCH 1, 2010

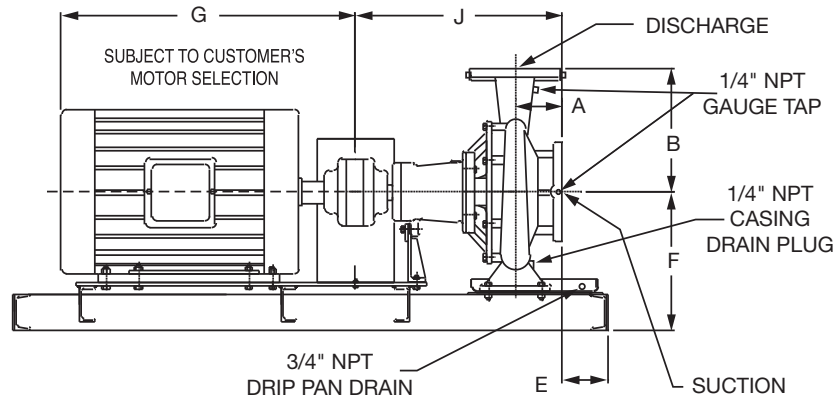
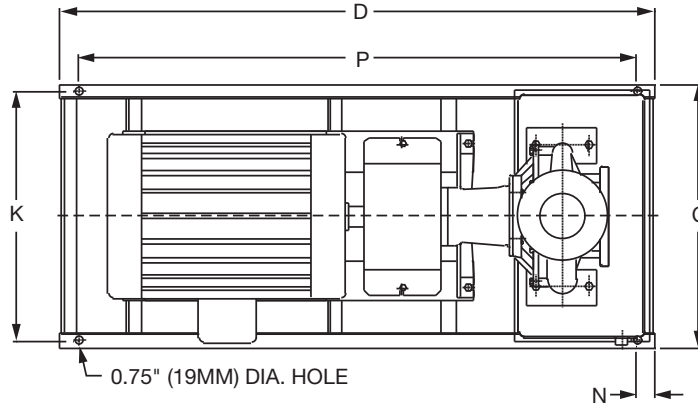
3500 RPM MODEL 2508

JOB _____ ENGINEER _____

CONTRACTOR _____ REP. _____

| ITEM NO. | MODEL NO. | IMPELLER DIA. | G.P.M. | HEAD/FT. | H.P. | ELEC. CHAR. |
|----------|-----------|---------------|--------|----------|------|-------------|
| | | | | | | |

WEIGHT _____ PUMP/MOTOR _____



DIMENSIONS

50 Cycle Performance Curves attached when applicable.

| Model No. Flange Size (Suction x Discharge) | Motor Frame | HP 3500 (RPM) | A | | B | | C | D | E | | F | G | J | | K | N | P |
|---|----------------|---------------------|----------------------|----------------------|----------------------|----------------------|-------------|-------------|----------------------|----------------------|----------------|-------------|----------------------|----------------------|-------------|--------------|-------------|
| | | | ANSI Class 125 | ANSI Class 250 | ANSI Class 125 | ANSI Class 250 | | | ANSI Class 125 | ANSI Class 250 | | | ANSI Class 125 | ANSI Class 250 | | | |
| 2508 3 x 2 1/2 (76 x 64) | 286TS | 30 | 4.72 (120) | 5.10 (130) | 8.25 (210) | 8.53 (217) | 19.17 (487) | 50.0 (1270) | 0.96 (24) | 0.59 (15) | 11.40 (290) | 25.06 (637) | 23.24 (590) | 23.61 (600) | 17.67 (449) | 2.00 (51) | 46.0 (1166) |
| | 324TS | 40 | | | | | 19.17 (487) | 50.0 (1270) | 0.96 (24) | 0.59 (15) | | 26.69 (678) | | | 17.67 (449) | | 46.0 (1166) |
| | 326TS | 50 | | | | | 19.17 (487) | 50.0 (1270) | 0.96 (24) | 0.59 (15) | | 27.69 (703) | | | 17.67 (449) | | 46.0 (1166) |
| | 364TS | 60 | | | | | 21.17 (538) | 56.0 (1422) | 0.40 (10) | 0.03 (1) | | 29.69 (754) | | | 19.67 (500) | | 52.0 (1321) |
| | 365TS | 75 | | | | | 21.17 (538) | 56.0 (1422) | 0.40 (10) | 0.03 (1) | | 29.69 (754) | | | 19.67 (500) | | 52.0 (1321) |
| | | | | | | | | | | | | | | | | | |

English dimensions are in inches. Metric dimensions are in millimeters. Metric data is presented in ().
Do not use for construction purposes unless certified.

MATERIALS OF CONSTRUCTION

| Item | BRONZE FITTED | | ALL IRON | |
|-----------------|------------------------------|------------------------------|------------------------------|------------------------------|
| | Std. Pump Constr. | Optional | Standard | Optional |
| Casing | Cast Iron ASTM A48 Class 30A | N/A | Cast Iron ASTM A48 Class 30A | N/A |
| Impeller | Bronze ASTM B584-836 | N/A | Cast Iron ASTM A48 Class 30A | N/A |
| Wear Ring | N/A | Bronze ASTM B584-932 SAE660 | N/A | N/A |
| Shaft | Carbon Steel AISI 1045 | St. Steel AISI 416 ASTM A582 | Carbon Steel AISI 1045 | St. Steel AISI 416 ASTM A582 |
| Shaft Sleeve | Bronze ASTM B584-932 SAE660 | St. Steel AISI 303 ASTM A276 | St. Steel AISI 303 ASTM A276 | N/A |
| Mech. Seal | Ceramic/EPT | CF | Ceramic/EPT | CF |
| Seal Flush Line | N/A | Copper | N/A | Stainless Steel |

CF - Consult Factory

N/A - Not Available

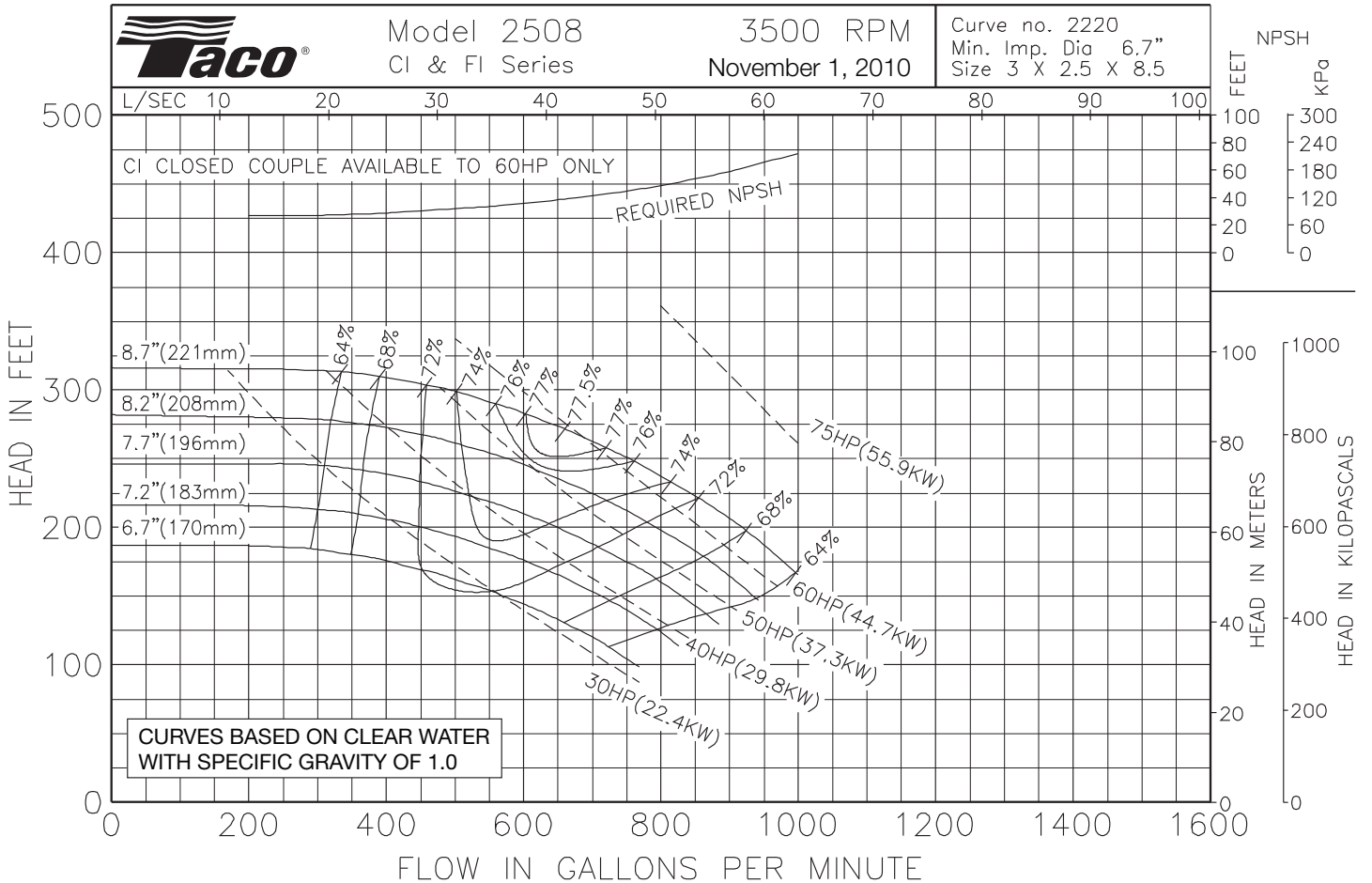
OPERATING SPECIFICATIONS

| | Standard | Optional |
|-------------|----------------------|-----------------------|
| Flange | ANSI Class 125 | ANSI Class 250 |
| Pressure | 175 PSIG* (1210 KPA) | 300 PSIG** (2070 KPA) |
| Temperature | 250°F (120°C) | 250°F (120°C) |

Motors: All NEMA Standard (T Frame)
 * In accordance with ANSI Standard B16.1 Class 125
 ** In accordance with ANSI Standard B16.1 Class 250 Dim.

MAXIMUM ASSEMBLY WEIGHT

| Motor Frame | Weight Lbs (Kg) |
|-------------|-----------------|
| 284T - 286T | 655 (297) |
| 324T - 326T | 848 (385) |
| 364T - 365T | 1055 (479) |



Comments:

Do it Once. Do it Right.®

TACO, INC., 1160 Cranston Street, Cranston, RI 02920 Telephone: (401) 942-8000 FAX: (401) 942-2360.
TACO (Canada), Ltd., 8450 Lawson Road, Unit #3, Milton, Ontario L9T 0J8. Telephone: 905/564-9422. FAX: 905/564-9436.
 Visit our web site at: <http://www.taco-hvac.com>

Printed in USA
 Copyright 2010
 TACO, Inc.



Submittal Data Information

FI Series Pumps

301-1426

EFFECTIVE: NOVEMBER 1, 2010

SUPERSEDES: MARCH 1, 2010

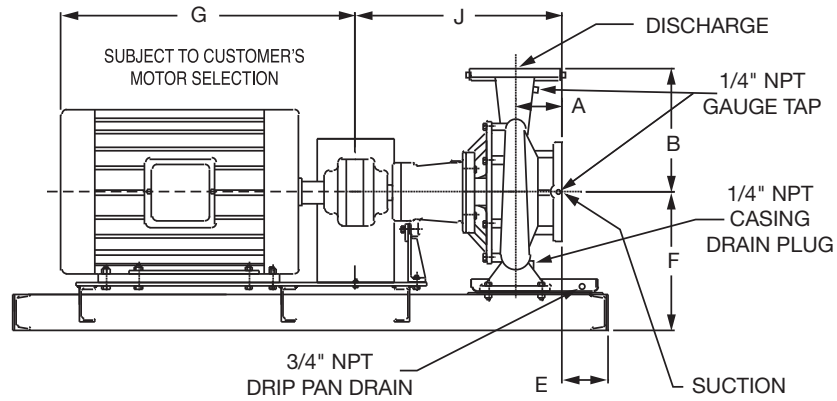
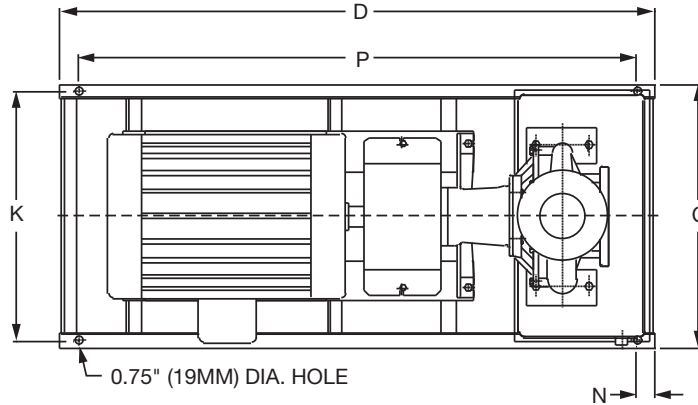
3500 RPM MODEL 2509

JOB _____ ENGINEER _____

CONTRACTOR _____ REP. _____

| ITEM NO. | MODEL NO. | IMPELLER DIA. | G.P.M. | HEAD/FT. | H.P. | ELEC. CHAR. |
|----------|-----------|---------------|--------|----------|------|-------------|
|----------|-----------|---------------|--------|----------|------|-------------|

WEIGHT _____ PUMP/MOTOR _____



DIMENSIONS

50 Cycle Performance Curves attached when applicable.

| Model No. Flange Size (Suction x Discharge) | Motor Frame | HP 3500 (RPM) | A | | B | | C | D | E | | F | G | J | | K | N | P |
|---|----------------|---------------------|----------------------|----------------------|----------------------|----------------------|-------------|-------------|----------------------|----------------------|----------------|-------------|----------------------|----------------------|-------------|--------------|-------------|
| | | | ANSI Class 125 | ANSI Class 250 | ANSI Class 125 | ANSI Class 250 | | | ANSI Class 125 | ANSI Class 250 | | | ANSI Class 125 | ANSI Class 250 | | | |
| 2509 3 x 2 1/2 (76 x 64) | 256T | 20 | 4.72 (120) | 5.09 (129) | 9.00 (229) | 9.31 (236) | 19.17 (487) | 50.0 (1270) | 0.96 (24) | 0.59 (15) | 11.40 (290) | 23.13 (589) | 23.12 (587) | 23.49 (597) | 17.67 (449) | 2.00 (50) | 46.0 (1166) |
| | 284TS | 25 | | | | | 19.17 (487) | 50.0 (1270) | 0.96 (24) | 0.59 (15) | | 24.94 (633) | | | 17.67 (449) | | 46.0 (1166) |
| | 286TS | 30 | | | | | 19.17 (487) | 50.0 (1270) | 0.96 (24) | 0.59 (15) | | 25.06 (637) | | | 17.67 (449) | | 46.0 (1166) |
| | 324TS | 40 | | | | | 19.17 (487) | 50.0 (1270) | 0.96 (24) | 0.59 (15) | | 26.69 (678) | | | 17.67 (449) | | 46.0 (1166) |
| | 326TS | 50 | | | | | 19.17 (487) | 50.0 (1270) | 0.96 (24) | 0.59 (15) | | 27.69 (703) | | | 17.67 (449) | | 46.0 (1166) |
| | 364TS | 60 | | | | | 19.17 (487) | 50.0 (1270) | 0.96 (24) | 0.59 (15) | | 29.69 (754) | | | 17.67 (449) | | 46.0 (1166) |

English dimensions are in inches. Metric dimensions are in millimeters. Metric data is presented in ().
Do not use for construction purposes unless certified.

MATERIALS OF CONSTRUCTION

| Item | BRONZE FITTED | | ALL IRON | |
|-----------------|------------------------------|------------------------------|------------------------------|------------------------------|
| | Std. Pump Constr. | Optional | Standard | Optional |
| Casing | Cast Iron ASTM A48 Class 30A | N/A | Cast Iron ASTM A48 Class 30A | N/A |
| Impeller | Bronze ASTM B584-836 | N/A | Cast Iron ASTM A48 Class 30A | N/A |
| Wear Ring | N/A | Bronze ASTM B584-932 SAE660 | N/A | N/A |
| Shaft | Carbon Steel AISI 1045 | St. Steel AISI 416 ASTM A582 | Carbon Steel AISI 1045 | St. Steel AISI 416 ASTM A582 |
| Shaft Sleeve | Bronze ASTM B584-932 SAE660 | St. Steel AISI 303 ASTM A276 | St. Steel AISI 303 ASTM A276 | N/A |
| Mech. Seal | Ceramic/EPT | CF | Ceramic/EPT | CF |
| Seal Flush Line | N/A | Copper | N/A | Stainless Steel |

CF - Consult Factory

N/A - Not Available

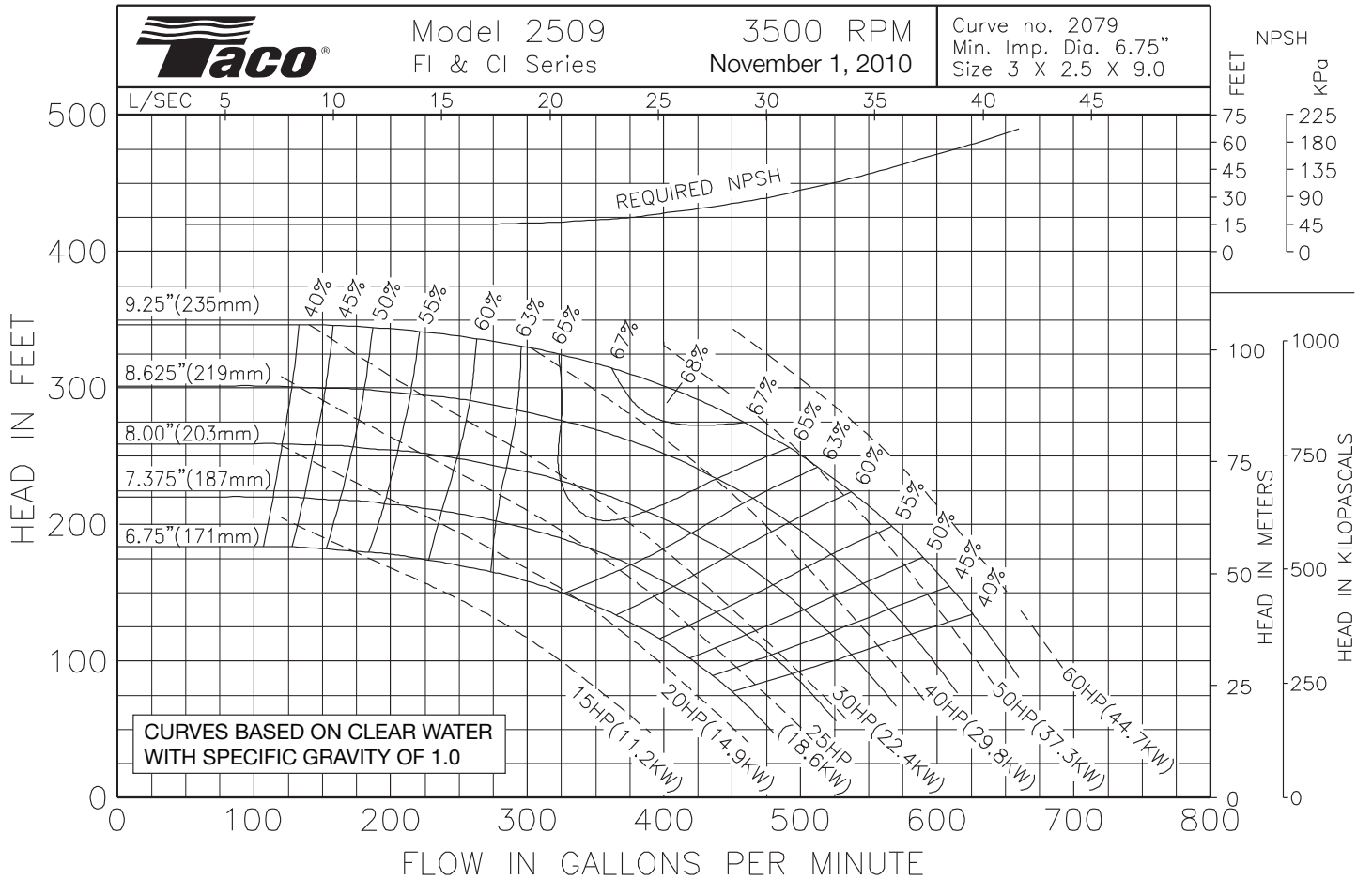
OPERATING SPECIFICATIONS

| | Standard | Optional |
|-------------|----------------------|-----------------------|
| Flange | ANSI Class 125 | ANSI Class 250 |
| Pressure | 175 PSIG* (1210 KPA) | 300 PSIG** (2070 KPA) |
| Temperature | 250°F (120°C) | 250°F (120°C) |

Motors: All NEMA Standard (T Frame)
 * In accordance with ANSI Standard B16.1 Class 125
 ** In accordance with ANSI Standard B16.1 Class 250 Dim.

MAXIMUM ASSEMBLY WEIGHT

| Motor Frame | Weight Lbs (Kg) |
|-------------|-----------------|
| 254T - 256T | 567 (257) |
| 284T - 286T | 691 (313) |
| 324T - 326T | 884 (401) |
| 364T - 365T | 1045 (474) |



Comments:

Do it Once. Do it Right.®

TACO, INC., 1160 Cranston Street, Cranston, RI 02920 Telephone: (401) 942-8000 FAX: (401) 942-2360.
 TACO (Canada), Ltd., 8450 Lawson Road, Unit #3, Milton, Ontario L9T 0J8. Telephone: 905/564-9422. FAX: 905/564-9436.
 Visit our web site at: <http://www.taco-hvac.com>

Printed in USA
 Copyright 2010
 TACO, Inc.



Submittal Data Information

FI Series Pumps

301-1417

EFFECTIVE: MARCH 1, 2010

SUPERSEDES: OCTOBER 1, 2009

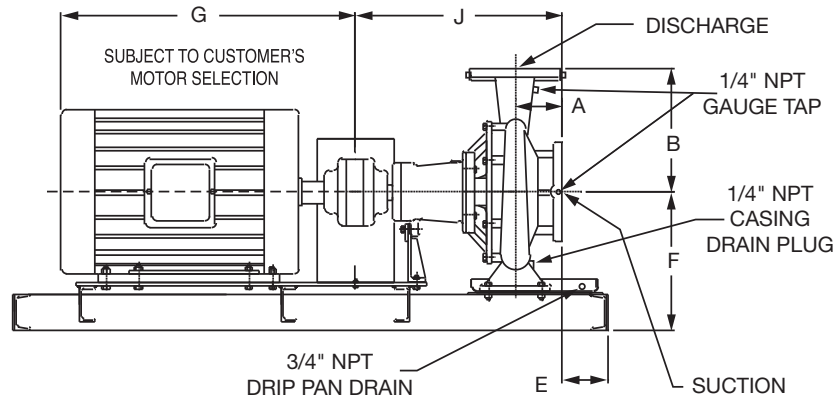
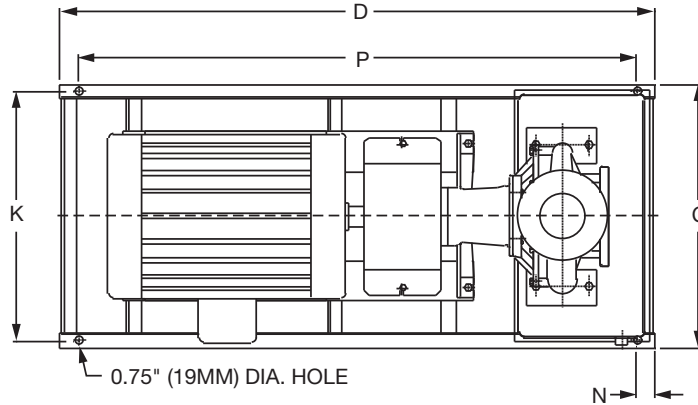
3500 RPM MODEL 3007

JOB _____ ENGINEER _____

CONTRACTOR _____ REP. _____

| ITEM NO. | MODEL NO. | IMPELLER DIA. | G.P.M. | HEAD/FT. | H.P. | ELEC. CHAR. |
|----------|-----------|---------------|--------|----------|------|-------------|
| | | | | | | |

WEIGHT _____ PUMP/MOTOR _____



DIMENSIONS

50 Cycle Performance Curves attached when applicable.

| Model No. Flange Size (Suction x Discharge) | Motor Frame | HP 3500 (RPM) | A | | B | | C | D | E | | F | G | J | | K | N | P |
|---|----------------|---------------------|----------------------|----------------------|----------------------|----------------------|-------------|-------------|----------------------|----------------------|----------------|-------------|----------------------|----------------------|-------------|--------------|-------------|
| | | | ANSI Class 125 | ANSI Class 250 | ANSI Class 125 | ANSI Class 250 | | | ANSI Class 125 | ANSI Class 250 | | | ANSI Class 125 | ANSI Class 250 | | | |
| 3007 4 x 3 (102 x 76) | 256T | 20 | 4.72 (120) | 5.03 (128) | 10.00 (254) | 10.37 (263) | 19.17 (487) | 50.0 (1270) | 0.79 (20) | 0.69 (18) | 11.40 (290) | 23.19 (589) | 23.92 (608) | 24.24 (616) | 17.67 (449) | 2.00 (51) | 46.0 (1168) |
| | 284TS | 25 | | | | | 19.17 (487) | 50.0 (1270) | 0.79 (20) | 0.69 (18) | | 24.94 (633) | | | 17.67 (449) | | 46.0 (1168) |
| | 286TS | 30 | | | | | 19.17 (487) | 50.0 (1270) | 0.79 (20) | 0.69 (18) | | 25.06 (637) | | | 17.67 (449) | | 46.0 (1168) |
| | 324TS | 40 | | | | | 19.17 (487) | 50.0 (1270) | 0.79 (20) | 0.69 (18) | | 26.69 (678) | | | 17.67 (449) | | 46.0 (1168) |
| | 326TS | 50 | | | | | 19.17 (487) | 50.0 (1270) | 0.79 (20) | 0.69 (18) | | 27.69 (703) | | | 17.67 (449) | | 46.0 (1168) |
| | 364TS | 60 | | | | | 19.17 (487) | 50.0 (1270) | 0.79 (20) | 0.69 (18) | | 29.69 (754) | | | 17.67 (449) | | 46.0 (1168) |

English dimensions are in inches. Metric dimensions are in millimeters. Metric data is presented in ().
Do not use for construction purposes unless certified.

MATERIALS OF CONSTRUCTION

| Item | BRONZE FITTED | | ALL IRON | |
|-----------------|--------------------------------------|--------------------------------------|------------------------------------|------------------------------------|
| | Std. Pump Constr. | Optional | Standard | Optional |
| Casing | Cast Iron ASTM A48 Class 30A | N/A | Cast Iron ASTM A48 Class 30A | N/A |
| Impeller | Bronze ASTM B584-836 | N/A | Cast Iron ASTM A48 Class 30A | N/A |
| Wear Ring | N/A | Bronze ASTM B584-932 SAE660 | N/A | N/A |
| Shaft | Carbon Steel AISI 1045 | St. Steel AISI 416 ASTM A582 | Carbon Steel AISI 1045 | St. Steel AISI 416 ASTM A582 |
| Shaft Sleeve | Bronze ASTM B584-932 SAE660 | St. Steel AISI 303 ASTM A276 | St. Steel AISI 303 ASTM A276 | N/A |
| Mech. Seal | Ceramic/ EPT | CF | Ceramic/ EPT | CF |
| Seal Flush Line | N/A | Copper | N/A | Stainless Steel |

CF - Consult Factory

N/A - Not Available

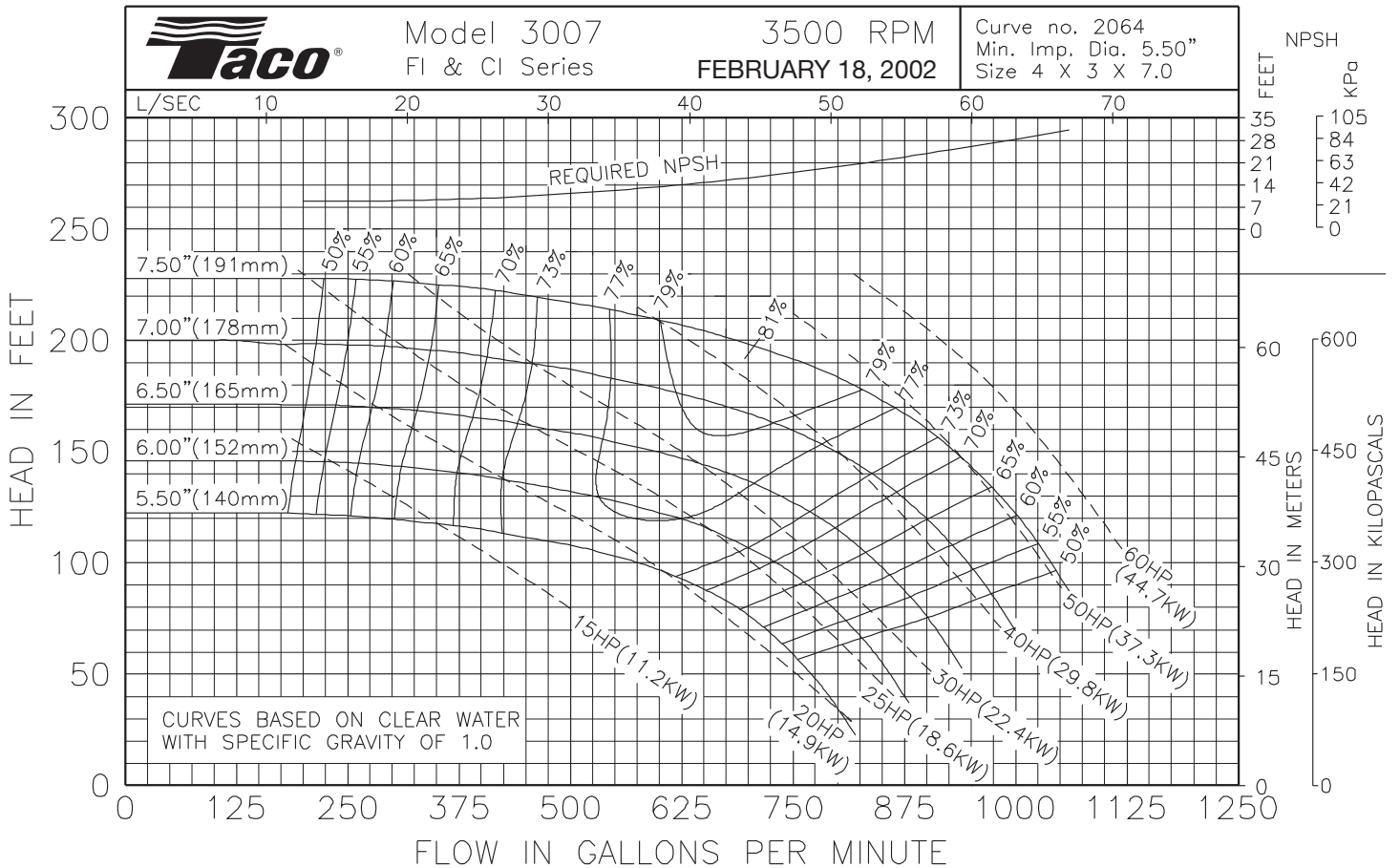
OPERATING SPECIFICATIONS

| | Standard | Optional |
|-------------|-------------------------|--------------------------|
| Flange | ANSI Class 125 | ANSI Class 250 |
| Pressure | 175 PSIG* (1210 KPA) | 300 PSIG** (2070 KPA) |
| Temperature | 250°F (120°C) | 250°F (120°C) |

Motors: All NEMA Standard (T Frame)
 * In accordance with ANSI Standard B16.1 Class 125
 ** In accordance with ANSI Standard B16.1 Class 250 Dim.

MAXIMUM ASSEMBLY WEIGHT

| Motor Frame | Weight Lbs (Kg) |
|-------------|--------------------|
| 254T - 256T | 543 (246) |
| 284T - 286T | 667 (303) |
| 324T - 326T | 860 (390) |
| 364T - 365T | 1021 (463) |



Comments:

Do it Once. Do it Right.®

TACO, INC., 1160 Cranston Street, Cranston, RI 02920 Telephone: (401) 942-8000 FAX: (401) 942-2360.
TACO (Canada), Ltd., 8450 Lawson Road, Unit #3, Milton, Ontario L9T 0J8. Telephone: 905/564-9422. FAX: 905/564-9436.
 Visit our web site at: <http://www.taco-hvac.com>

Printed in USA
 Copyright 2010
 TACO, Inc.



Submittal Data Information

FI Series Pumps

301-1429

EFFECTIVE: NOVEMBER 1, 2010

SUPERSEDES: MARCH 1, 2010

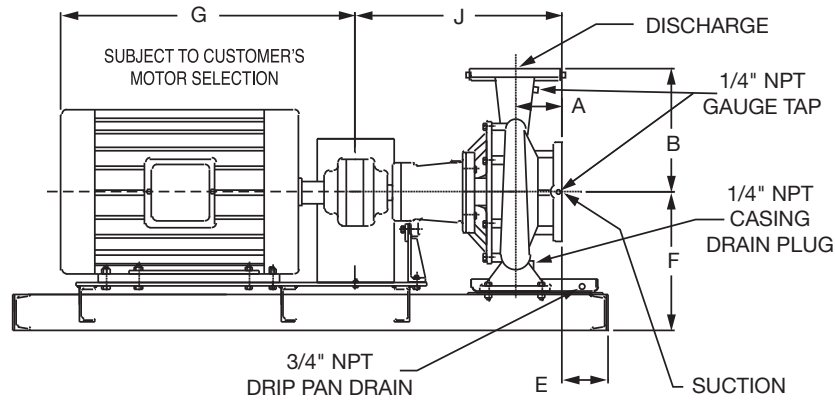
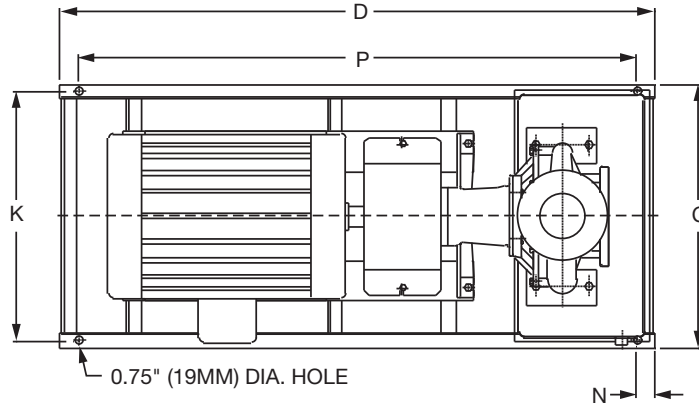
3500 RPM MODEL 3009

JOB _____ ENGINEER _____

CONTRACTOR _____ REP. _____

| ITEM NO. | MODEL NO. | IMPELLER DIA. | G.P.M. | HEAD/FT. | H.P. | ELEC. CHAR. |
|----------|-----------|---------------|--------|----------|------|-------------|
| | | | | | | |

WEIGHT _____ PUMP/MOTOR _____



DIMENSIONS

50 Cycle Performance Curves attached when applicable.

| Model No. Flange Size (Suction x Discharge) | Motor Frame | HP 3500 (RPM) | A | | B | | C | D | E | | F | G | J | | K | N | P |
|---|----------------|---------------------|----------------------|----------------------|----------------------|----------------------|-------------|-------------|----------------------|----------------------|----------------|-------------|----------------------|----------------------|-------------|--------------|-------------|
| | | | ANSI Class 125 | ANSI Class 250 | ANSI Class 125 | ANSI Class 250 | | | ANSI Class 125 | ANSI Class 250 | | | ANSI Class 125 | ANSI Class 250 | | | |
| 3009 4 x 3 (102 x 76) | 286TS | 30 | 4.73 (120) | 5.04 (128) | 10.00 (254) | 10.37 (263) | 21.17 (538) | 56.0 (1422) | 2.11 (54) | 1.80 (46) | 11.40 (290) | 25.06 (637) | 23.24 (590) | 23.55 (598) | 19.67 (500) | 2.00 (50) | 52.0 (1321) |
| | 324TS | 40 | | | | | 21.17 (538) | 56.0 (1422) | 2.11 (54) | 1.80 (46) | | 26.69 (678) | | | 19.67 (500) | | 52.0 (1321) |
| | 326TS | 50 | | | | | 21.17 (538) | 56.0 (1422) | 2.11 (54) | 1.80 (46) | | 27.69 (703) | | | 19.67 (500) | | 52.0 (1321) |
| | 364TS | 60 | | | | | 21.17 (538) | 56.0 (1422) | 2.11 (54) | 1.80 (46) | | 29.69 (754) | | | 19.67 (500) | | 52.0 (1321) |
| | 365TS | 75 | | | | | 21.17 (538) | 56.0 (1422) | 2.11 (54) | 1.80 (46) | | 29.69 (754) | | | 19.67 (500) | | 52.0 (1321) |
| | 405TS | 100 | | | | | 21.17 (538) | 56.0 (1422) | 2.11 (54) | 1.80 (46) | | 34.00 (864) | | | 19.67 (500) | | 52.0 (1321) |

English dimensions are in inches. Metric dimensions are in millimeters. Metric data is presented in ().
Do not use for construction purposes unless certified.

MATERIALS OF CONSTRUCTION

| Item | BRONZE FITTED | | ALL IRON | |
|-----------------|------------------------------|------------------------------|------------------------------|------------------------------|
| | Std. Pump Constr. | Optional | Standard | Optional |
| Casing | Cast Iron ASTM A48 Class 30A | N/A | Cast Iron ASTM A48 Class 30A | N/A |
| Impeller | Bronze ASTM B584-836 | N/A | Cast Iron ASTM A48 Class 30A | N/A |
| Wear Ring | N/A | Bronze ASTM B584-932 SAE660 | N/A | N/A |
| Shaft | Carbon Steel AISI 1045 | St. Steel AISI 416 ASTM A582 | Carbon Steel AISI 1045 | St. Steel AISI 416 ASTM A582 |
| Shaft Sleeve | Bronze ASTM B584-932 SAE660 | St. Steel AISI 303 ASTM A276 | St. Steel AISI 303 ASTM A276 | N/A |
| Mech. Seal | Ceramic/EPT | CF | Ceramic/EPT | CF |
| Seal Flush Line | N/A | Copper | N/A | Stainless Steel |

CF - Consult Factory

N/A - Not Available

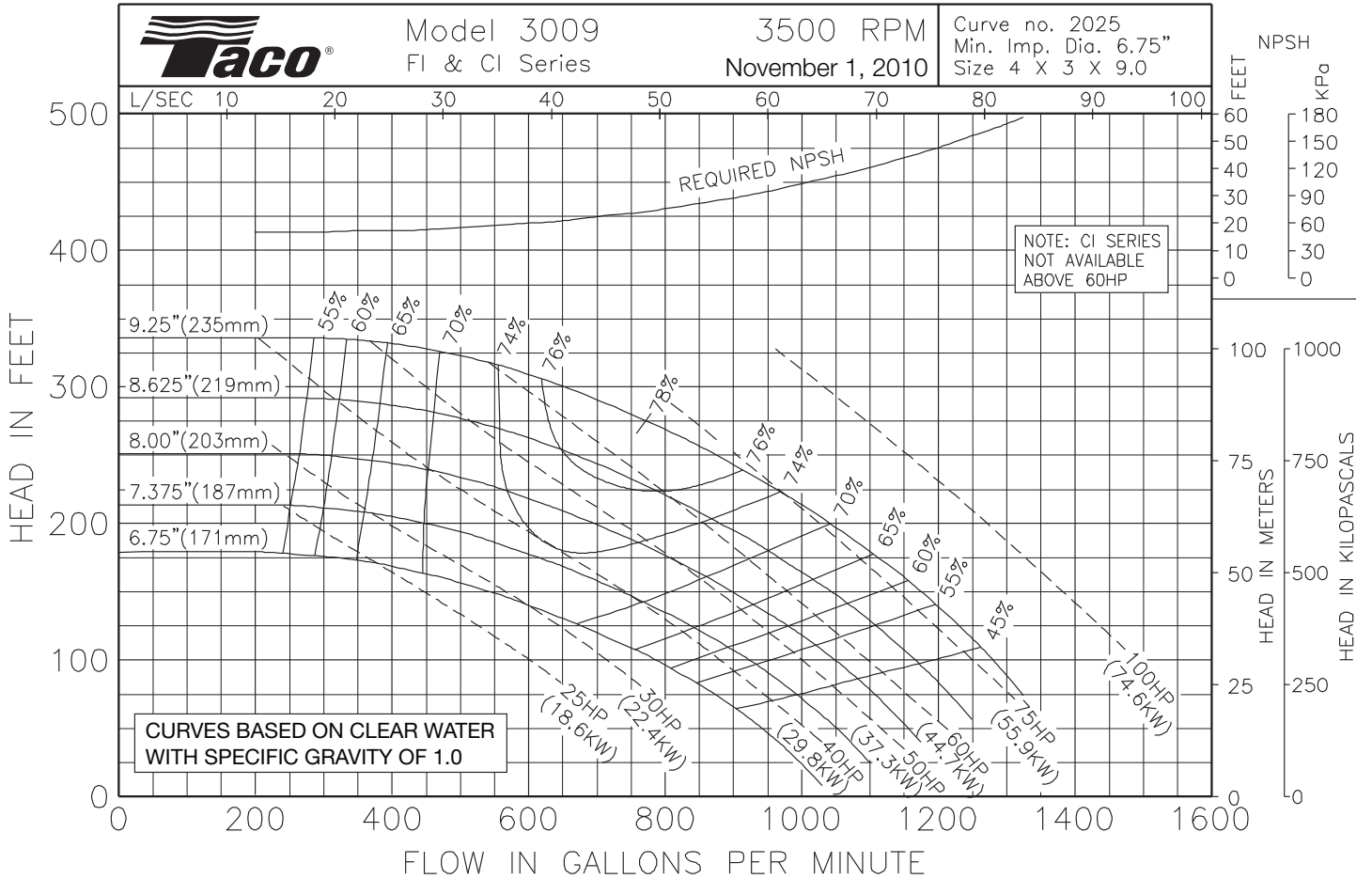
OPERATING SPECIFICATIONS

| | Standard | Optional |
|-------------|----------------------|-----------------------|
| Flange | ANSI Class 125 | ANSI Class 250 |
| Pressure | 175 PSIG* (1210 KPA) | 300 PSIG** (2070 KPA) |
| Temperature | 250°F (120°C) | 250°F (120°C) |

Motors: All NEMA Standard (T Frame)
 * In accordance with ANSI Standard B16.1 Class 125
 ** In accordance with ANSI Standard B16.1 Class 250 Dim.

MAXIMUM ASSEMBLY WEIGHT

| Motor Frame | Weight Lbs (Kg) |
|-------------|-----------------|
| 284T - 286T | 687 (312) |
| 324T - 326T | 880 (399) |
| 364T - 365T | 1087 (493) |
| 404T - 405T | 1418 (643) |



Comments:

Do it Once. Do it Right.®

TACO, INC., 1160 Cranston Street, Cranston, RI 02920 Telephone: (401) 942-8000 FAX: (401) 942-2360.
 TACO (Canada), Ltd., 8450 Lawson Road, Unit #3, Milton, Ontario L9T 0J8. Telephone: 905/564-9422. FAX: 905/564-9436.
 Visit our web site at: <http://www.taco-hvac.com>

Printed in USA
 Copyright 2010
 TACO, Inc.



Submittal Data Information

FI Series Pumps

301-1420

EFFECTIVE: NOVEMBER 1, 2010

SUPERSEDES: MARCH 1, 2010

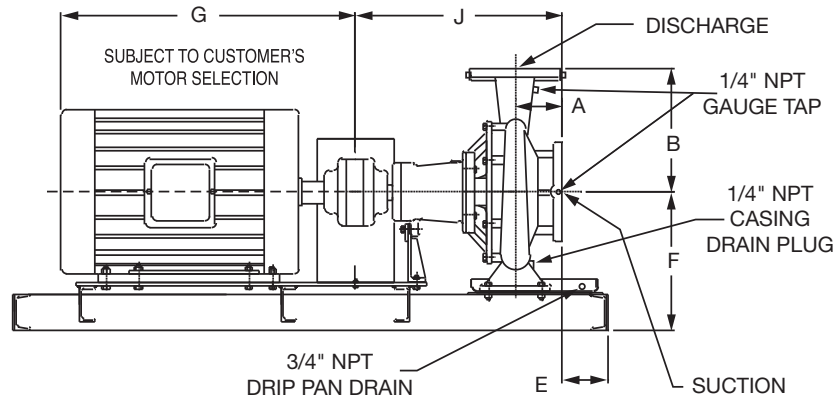
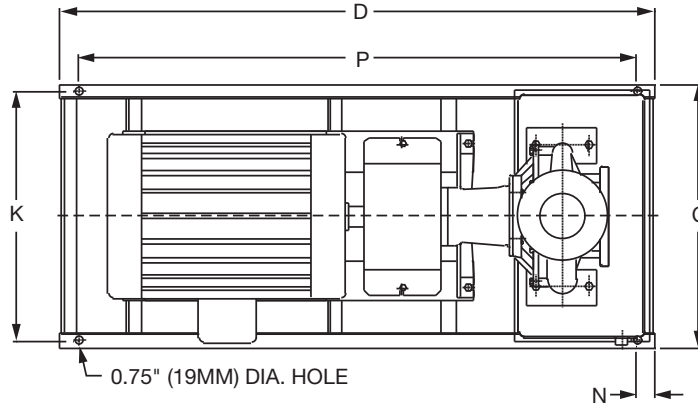
3500 RPM MODEL 4007

JOB _____ ENGINEER _____

CONTRACTOR _____ REP. _____

| ITEM NO. | MODEL NO. | IMPELLER DIA. | G.P.M. | HEAD/FT. | H.P. | ELEC. CHAR. |
|----------|-----------|---------------|--------|----------|------|-------------|
| | | | | | | |

WEIGHT _____ PUMP/MOTOR _____



DIMENSIONS

50 Cycle Performance Curves attached when applicable.

| Model No. Flange Size (Suction x Discharge) | Motor Frame | HP 3500 (RPM) | A | | B | | C | D | E | | F | G | J | | K | N | P |
|---|----------------|---------------------|----------------------|----------------------|----------------------|----------------------|-------------|-------------|----------------------|----------------------|----------------|-------------|----------------------|----------------------|-------------|--------------|-------------|
| | | | ANSI Class 125 | ANSI Class 250 | ANSI Class 125 | ANSI Class 250 | | | ANSI Class 125 | ANSI Class 250 | | | ANSI Class 125 | ANSI Class 250 | | | |
| 4007 5 x 4 (127 x 102) | 284TS | 25 | 5.56 (141) | 6.00 (152) | 10.50 (267) | 10.81 (275) | 19.17 (487) | 49.0 (1245) | 0.88 (22) | 0.44 (11) | 12.19 (310) | 24.94 (633) | 25.10 (638) | 25.54 (648) | 17.67 (449) | 2.00 (51) | 45.0 (1143) |
| | 286TS | 30 | | | | | 19.17 (487) | 49.0 (1245) | 0.88 (22) | 0.44 (11) | | 25.06 (637) | | | 17.67 (449) | | 45.0 (1143) |
| | 324TS | 40 | | | | | 21.17 (538) | 56.0 (1422) | 1.56 (40) | 1.12 (29) | | 26.69 (678) | | | 19.67 (500) | | 52.0 (1321) |
| | 326TS | 50 | | | | | 21.17 (538) | 56.0 (1422) | 1.56 (40) | 1.12 (29) | | 27.69 (703) | | | 19.67 (500) | | 52.0 (1321) |
| | 364TS | 60 | | | | | 21.17 (538) | 56.0 (1422) | 1.56 (40) | 1.12 (29) | | 29.69 (754) | | | 19.67 (500) | | 52.0 (1321) |
| | 365TS | 75 | | | | | 21.17 (538) | 56.0 (1422) | 1.56 (40) | 1.12 (29) | | 29.69 (754) | | | 19.67 (500) | | 52.0 (1321) |

English dimensions are in inches. Metric dimensions are in millimeters. Metric data is presented in ().
Do not use for construction purposes unless certified.

MATERIALS OF CONSTRUCTION

| Item | BRONZE FITTED | | ALL IRON | |
|-----------------|------------------------------|------------------------------|------------------------------|------------------------------|
| | Std. Pump Constr. | Optional | Standard | Optional |
| Casing | Cast Iron ASTM A48 Class 30A | N/A | Cast Iron ASTM A48 Class 30A | N/A |
| Impeller | Bronze ASTM B584-836 | N/A | Cast Iron ASTM A48 Class 30A | N/A |
| Wear Ring | N/A | Bronze ASTM B584-932 SAE660 | N/A | N/A |
| Shaft | Carbon Steel AISI 1045 | St. Steel AISI 416 ASTM A582 | Carbon Steel AISI 1045 | St. Steel AISI 416 ASTM A582 |
| Shaft Sleeve | Bronze ASTM B584-932 SAE660 | St. Steel AISI 303 ASTM A276 | St. Steel AISI 303 ASTM A276 | N/A |
| Mech. Seal | Ceramic/EPT | CF | Ceramic/EPT | CF |
| Seal Flush Line | N/A | Copper | N/A | Stainless Steel |

CF - Consult Factory

N/A - Not Available

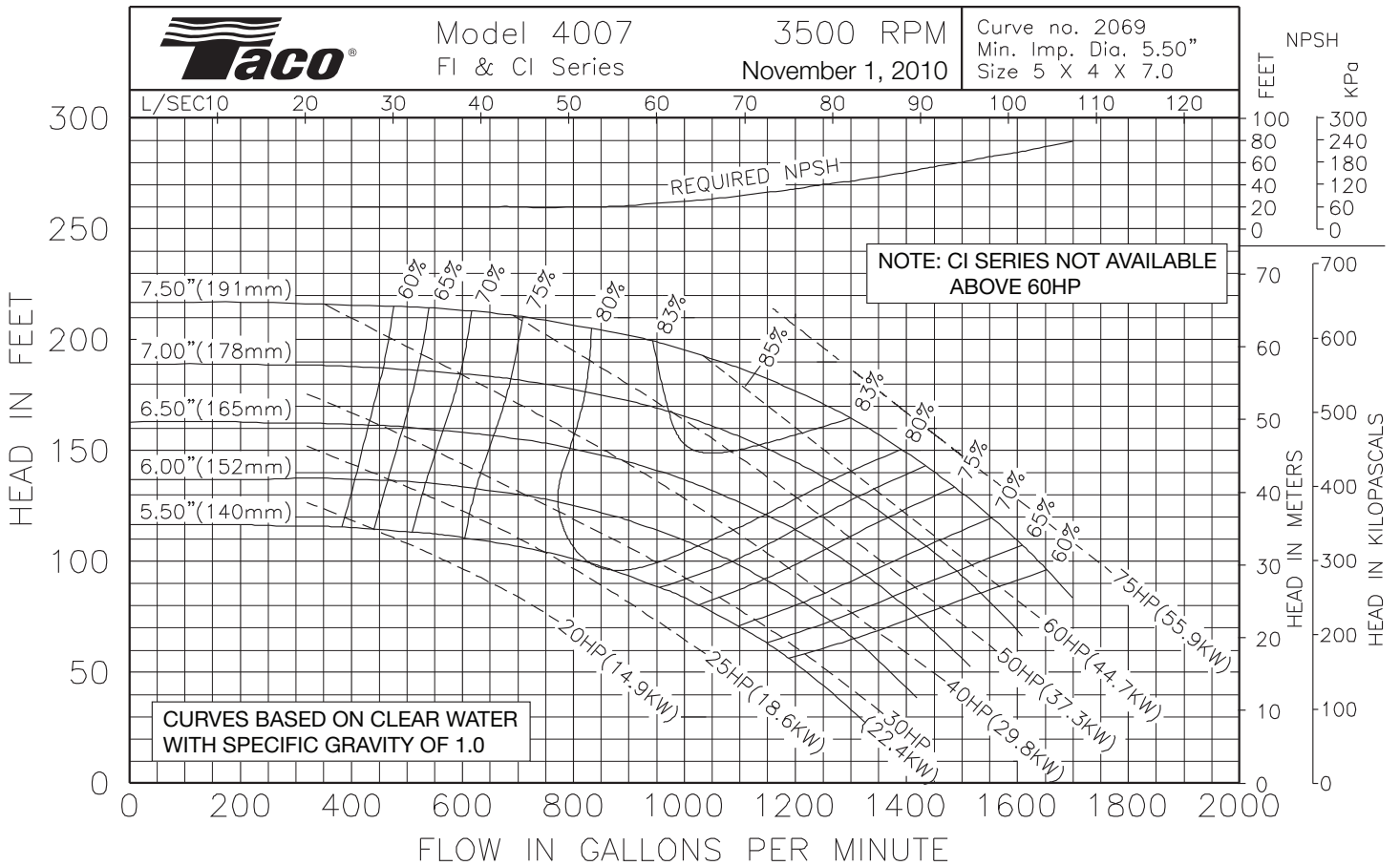
OPERATING SPECIFICATIONS

| | Standard | Optional |
|-------------|----------------------|-----------------------|
| Flange | ANSI Class 125 | ANSI Class 250 |
| Pressure | 175 PSIG* (1210 KPA) | 300 PSIG** (2070 KPA) |
| Temperature | 250°F (120°C) | 250°F (120°C) |

Motors: All NEMA Standard (T Frame)
 * In accordance with ANSI Standard B16.1 Class 125
 ** In accordance with ANSI Standard B16.1 Class 250 Dim.

MAXIMUM ASSEMBLY WEIGHT

| Motor Frame | Weight Lbs (Kg) |
|-------------|-----------------|
| 284T - 286T | 711 (323) |
| 324T - 326T | 904 (410) |
| 364T - 365T | 1111 (504) |



Comments:

Do it Once. Do it Right.®

TACO, INC., 1160 Cranston Street, Cranston, RI 02920 Telephone: (401) 942-8000 FAX: (401) 942-2360.
TACO (Canada), Ltd., 8450 Lawson Road, Unit #3, Milton, Ontario L9T 0J8. Telephone: 905/564-9422. FAX: 905/564-9436.
 Visit our web site at: <http://www.taco-hvac.com>

Printed in USA
 Copyright 2010
 TACO, Inc.



Submittal Data Information

FI Series Pumps

301-1463

EFFECTIVE: NOVEMBER 1, 2010

SUPERSEDES: MARCH 1, 2010

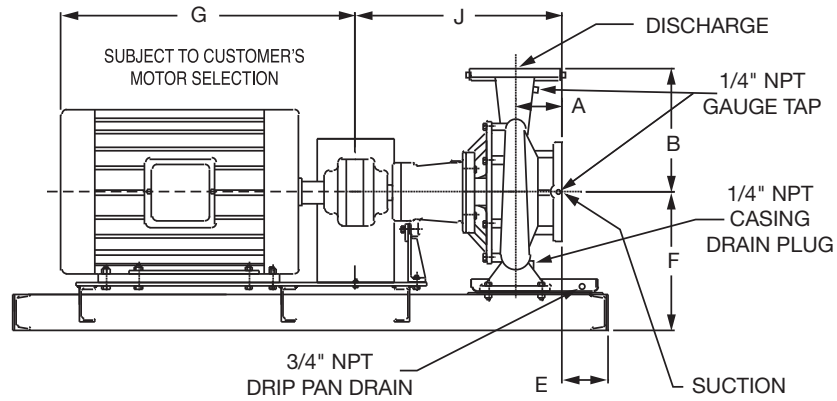
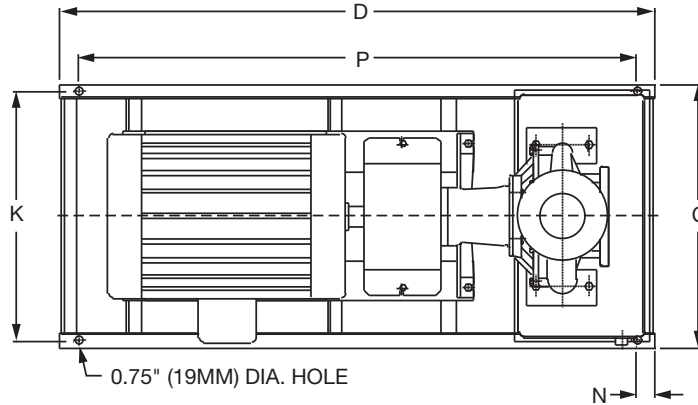
3500 RPM MODEL 4075

JOB _____ ENGINEER _____

CONTRACTOR _____ REP. _____

| ITEM NO. | MODEL NO. | IMPELLER DIA. | G.P.M. | HEAD/FT. | H.P. | ELEC. CHAR. |
|----------|-----------|---------------|--------|----------|------|-------------|
| | | | | | | |

WEIGHT _____ PUMP/MOTOR _____



DIMENSIONS

50 Cycle Performance Curves attached when applicable.

| Model No. Flange Size (Suction x Discharge) | Motor Frame | HP 3500 (RPM) | A | | B | | C | D | E | | F | G | J | | K | N | P |
|---|----------------|---------------------|----------------------|----------------------|----------------------|----------------------|-------------|-------------|----------------------|----------------------|----------------|-------------|----------------------|----------------------|-------------|--------------|-------------|
| | | | ANSI Class 125 | ANSI Class 250 | ANSI Class 125 | ANSI Class 250 | | | ANSI Class 125 | ANSI Class 250 | | | ANSI Class 125 | ANSI Class 250 | | | |
| 4075 5 x 4 (127 x 102) | 286TS | 30 | 4.72 (120) | 5.16 (131) | 10.81 (275) | 11.12 (267) | 19.17 (487) | 50.0 (1270) | 0.59 (15) | 0.15 (4) | 11.40 (290) | 25.06 (637) | 24.34 (618) | 24.77 (629) | 17.67 (449) | 2.00 (51) | 46.0 (1168) |
| | 324TS | 40 | | | | | 19.17 (487) | 50.0 (1270) | 0.59 (15) | 0.15 (4) | | 26.69 (678) | | | 17.67 (449) | | 46.0 (1168) |
| | 326TS | 50 | | | | | 19.17 (487) | 50.0 (1270) | 0.59 (15) | 0.15 (4) | | 27.69 (703) | | | 17.67 (449) | | 46.0 (1168) |
| | 364TS | 60 | | | | | 21.17 (538) | 56.0 (1422) | 1.69 (43) | 1.25 (32) | | 29.69 (754) | | | 19.67 (500) | | 52.0 (1321) |

English dimensions are in inches. Metric dimensions are in millimeters. Metric data is presented in ().
Do not use for construction purposes unless certified.

MATERIALS OF CONSTRUCTION

| Item | BRONZE FITTED | | ALL IRON | |
|-----------------|--------------------------------------|--------------------------------------|------------------------------------|------------------------------------|
| | Std. Pump Constr. | Optional | Standard | Optional |
| Casing | Cast Iron ASTM A48 Class 30A | N/A | Cast Iron ASTM A48 Class 30A | N/A |
| Impeller | Bronze ASTM B584-836 | N/A | Cast Iron ASTM A48 Class 30A | N/A |
| Wear Ring | N/A | Bronze ASTM B584-932 SAE660 | N/A | N/A |
| Shaft | Carbon Steel AISI 1045 | St. Steel AISI 416 ASTM A582 | Carbon Steel AISI 1045 | St. Steel AISI 416 ASTM A582 |
| Shaft Sleeve | Bronze ASTM B584-932 SAE660 | St. Steel AISI 303 ASTM A276 | St. Steel AISI 303 ASTM A276 | N/A |
| Mech. Seal | Ceramic/ EPT | CF | Ceramic/ EPT | CF |
| Seal Flush Line | N/A | Copper | N/A | Stainless Steel |

CF - Consult Factory

N/A - Not Available

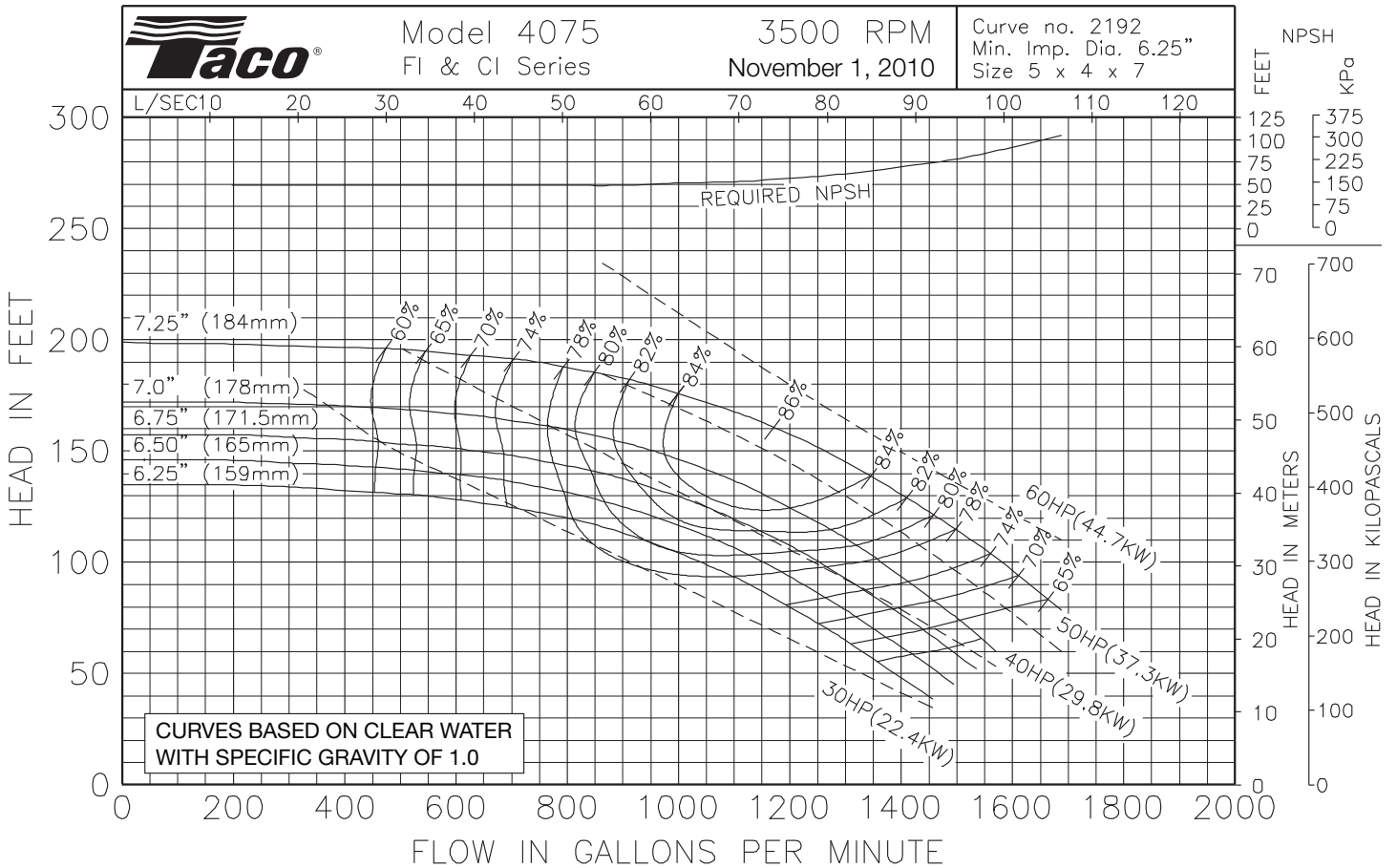
OPERATING SPECIFICATIONS

| | Standard | Optional |
|-------------|-------------------------|--------------------------|
| Flange | ANSI Class 125 | ANSI Class 250 |
| Pressure | 175 PSIG* (1210 KPA) | 300 PSIG** (2070 KPA) |
| Temperature | 250°F (120°C) | 250°F (120°C) |

Motors: All NEMA Standard (T Frame)
 * In accordance with ANSI Standard B16.1 Class 125
 ** In accordance with ANSI Standard B16.1 Class 250 Dim.

MAXIMUM ASSEMBLY WEIGHT

| Motor Frame | Weight Lbs (Kg) |
|-------------|--------------------|
| 284T - 286T | 727 (330) |
| 324T - 326T | 920 (417) |
| 364T - 365T | 1081 (490) |



Comments:

Do it Once. Do it Right.®

TACO, INC., 1160 Cranston Street, Cranston, RI 02920 Telephone: (401) 942-8000 FAX: (401) 942-2360.
TACO (Canada), Ltd., 8450 Lawson Road, Unit #3, Milton, Ontario L9T 0J8. Telephone: 905/564-9422. FAX: 905/564-9436.
 Visit our web site at: <http://www.taco-hvac.com>

Printed in USA
 Copyright 2010
 TACO, Inc.



Submittal Data Information

FI Series Pumps

301-1464

EFFECTIVE: MARCH 1, 2010

SUPERSEDES: OCTOBER 2, 2009

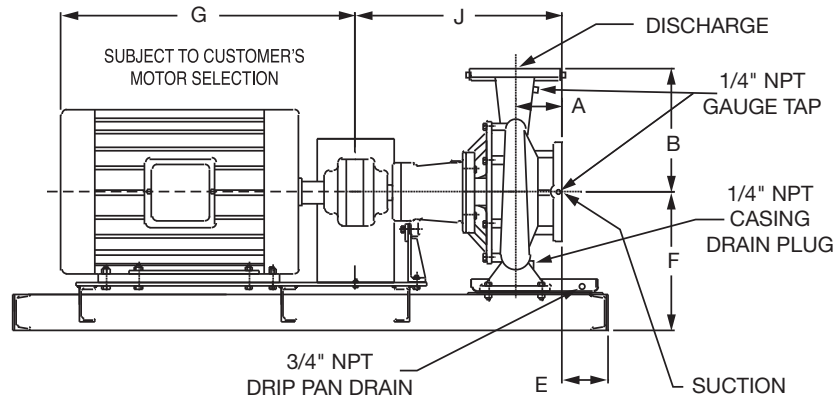
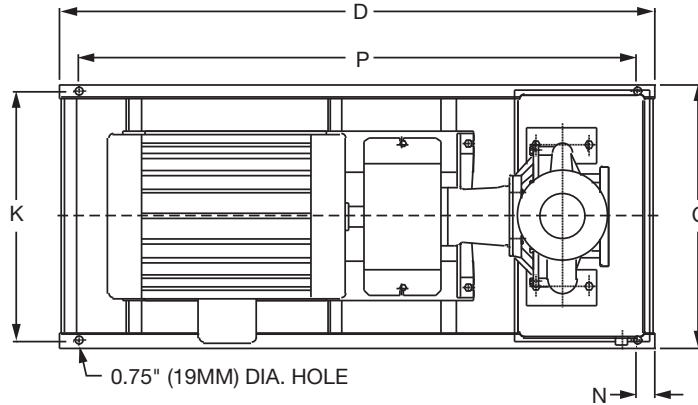
3500 RPM MODEL 5007

JOB _____ ENGINEER _____

CONTRACTOR _____ REP. _____

| ITEM NO. | MODEL NO. | IMPELLER DIA. | G.P.M. | HEAD/FT. | H.P. | ELEC. CHAR. |
|----------|-----------|---------------|--------|----------|------|-------------|
|----------|-----------|---------------|--------|----------|------|-------------|

WEIGHT _____ PUMP/MOTOR _____



DIMENSIONS

50 Cycle Performance Curves attached when applicable.

| Model No. Flange Size (Suction x Discharge) | Motor Frame | HP 3500 (RPM) | A | | B | | C | D | E | | F | G | J | | K | N | P |
|---|----------------|---------------------|----------------------|----------------------|----------------------|----------------------|-------------|-------------|----------------------|----------------------|----------------|-------------|----------------------|----------------------|-------------|--------------|-------------|
| | | | ANSI Class 125 | ANSI Class 250 | ANSI Class 125 | ANSI Class 250 | | | ANSI Class 125 | ANSI Class 250 | | | ANSI Class 125 | ANSI Class 250 | | | |
| 5007 6 x 5 (152 x 127) | 286TS | 30 | 5.31 (135) | 5.75 (146) | 11.00 (279) | 11.44 (291) | 18.17 (462) | 56.0 (1422) | 1.81 (46) | 1.38 (35) | 12.19 (310) | 25.06 (637) | 25.05 (636) | 25.49 (647) | 16.67 (423) | 2.00 (51) | 52.0 (1321) |
| | 324TS | 40 | | | | | 18.17 (462) | 56.0 (1422) | 1.81 (46) | 1.38 (35) | | 26.69 (678) | | | 16.67 (423) | | 52.0 (1321) |
| | 326TS | 50 | | | | | 18.17 (462) | 56.0 (1422) | 1.81 (46) | 1.38 (35) | | 27.69 (703) | | | 16.67 (423) | | 52.0 (1321) |
| | 364TS | 60 | | | | | 18.17 (462) | 56.0 (1422) | 1.81 (46) | 1.38 (35) | | 29.69 (754) | | | 16.67 (423) | | 52.0 (1321) |
| | 365TS | 75 | | | | | 18.17 (462) | 56.0 (1422) | 1.81 (46) | 1.38 (35) | | 29.69 (754) | | | 16.67 (423) | | 52.0 (1321) |

English dimensions are in inches. Metric dimensions are in millimeters. Metric data is presented in ().
Do not use for construction purposes unless certified.

MATERIALS OF CONSTRUCTION

| Item | BRONZE FITTED | | ALL IRON | |
|-----------------|------------------------------|------------------------------|------------------------------|------------------------------|
| | Std. Pump Constr. | Optional | Standard | Optional |
| Casing | Cast Iron ASTM A48 Class 30A | N/A | Cast Iron ASTM A48 Class 30A | N/A |
| Impeller | Bronze ASTM B584-836 | N/A | Cast Iron ASTM A48 Class 30A | N/A |
| Wear Ring | N/A | Bronze ASTM B584-932 SAE660 | N/A | N/A |
| Shaft | Carbon Steel AISI 1045 | St. Steel AISI 416 ASTM A582 | Carbon Steel AISI 1045 | St. Steel AISI 416 ASTM A582 |
| Shaft Sleeve | Bronze ASTM B584-932 SAE660 | St. Steel AISI 303 ASTM A276 | St. Steel AISI 303 ASTM A276 | N/A |
| Mech. Seal | Ceramic/EPT | CF | Ceramic/EPT | CF |
| Seal Flush Line | N/A | Copper | N/A | Stainless Steel |

CF - Consult Factory

N/A - Not Available

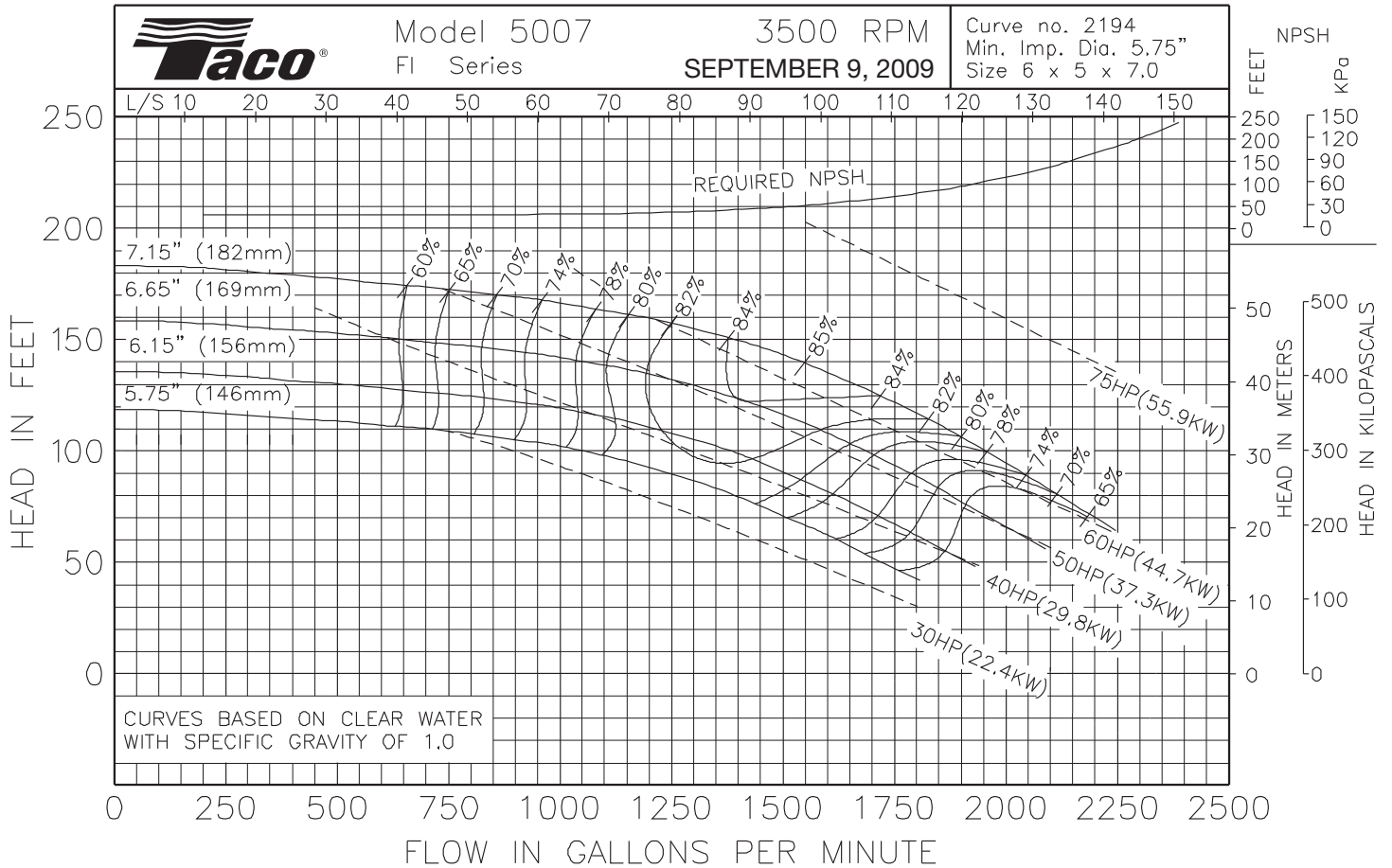
OPERATING SPECIFICATIONS

| | Standard | Optional |
|-------------|----------------------|-----------------------|
| Flange | ANSI Class 125 | ANSI Class 250 |
| Pressure | 175 PSIG* (1210 KPA) | 300 PSIG** (2070 KPA) |
| Temperature | 250°F (120°C) | 250°F (120°C) |

Motors: All NEMA Standard (T Frame)
 * In accordance with ANSI Standard B16.1 Class 125
 ** In accordance with ANSI Standard B16.1 Class 250 Dim.

MAXIMUM ASSEMBLY WEIGHT

| Motor Frame | Weight Lbs (Kg) |
|-------------|-----------------|
| 284T - 286T | 767 (348) |
| 324T - 326T | 960 (435) |
| 364T - 365T | 1167 (529) |



Comments:

Do it Once. Do it Right.®

TACO, INC., 1160 Cranston Street, Cranston, RI 02920 Telephone: (401) 942-8000 FAX: (401) 942-2360.
 TACO (Canada), Ltd., 8450 Lawson Road, Unit #3, Milton, Ontario L9T 0J8. Telephone: 905/564-9422. FAX: 905/564-9436.

Visit our web site at: <http://www.taco-hvac.com>

Printed in USA
 Copyright 2010
 TACO, Inc.