



TECHNICAL SERVICE MANUAL

GENERAL PURPOSE PUMPS
SERIES 32, 432 AND 32E
SIZES G - N

SECTION	TSM 312
PAGE	1 OF 12
ISSUE	J

CONTENTS

Introduction	1
Special Information	2
Maintenance	2
Disassembly	6
Assembly	6
Installation of Carbon Graphite Bushings	8
Pressure Relief Valve Instructions	9
Heat Cartridges	10

INTRODUCTION

The illustrations used in this manual are for identification purposes only and cannot be used for ordering parts. Obtain a parts list from the factory or a Viking® representative. Always give complete name of part, part number and material with model number and serial number of the pump when ordering repair parts. The unmounted pump or pump unit model number and serial number are on the nameplate.

In the Viking model number system, basic size letters are combined with series number (32, 432 and 32E), indicating either an unmounted pump or mounted pump unit.

Model Number Chart

UNMOUNTED PUMP		UNITS
PACKED	MECH. SEAL	
G32	G432	Units are designated by the unmounted pump model numbers followed by a letter indicating drive style. V = V-Belt D = Direct Drive B = Bracket Mounted
H32	H432	
HL32	HL432	
J32		
K32	K432	
KK32		
L32	L432	
LQ32		
LQ32E		
LL32		
Q32		
Q32E		
M32		
M32E		
N32		
N32E		

This manual deals only with Series 32, 432 and 32E General Purpose Pumps. Refer to Figures 1 thru 12 for general configuration and nomenclature used in this bulletin. Pump specifications and recommendations are listed in Catalog Section 310, Series 32 and 432 General Purpose Pumps and Section 430, Series 32E General Purpose Asphalt Pumps (Electric Heat).



FIGURE 1 - G Size Unmounted Pump

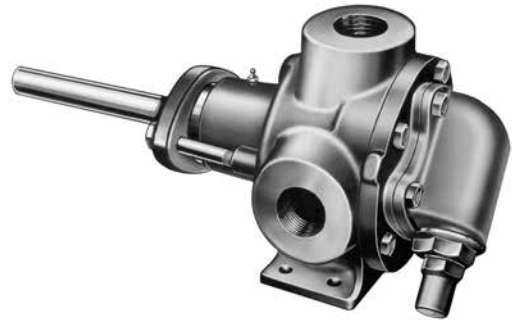


FIGURE 2 - H and HL Size Unmounted Pump



FIGURE 3 - J, K, KK and L Size Unmounted Pump
(Shown without pressure relief valve)

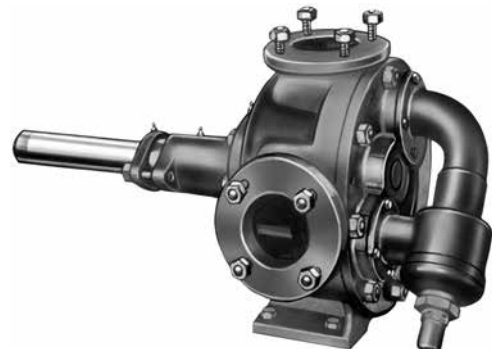


FIGURE 4 - LQ, LL, M and N Size Unmounted Pump

NOTE: J SIZE DISCONTINUED AS OF 1Q16.



SAFETY INFORMATION AND INSTRUCTIONS

IMPROPER INSTALLATION, OPERATION OR MAINTENANCE OF PUMP MAY CAUSE SERIOUS INJURY OR DEATH AND/OR RESULT IN DAMAGE TO PUMP AND/OR OTHER EQUIPMENT. VIKING'S WARRANTY DOES NOT COVER FAILURE DUE TO IMPROPER INSTALLATION, OPERATION OR MAINTENANCE.

THIS INFORMATION MUST BE FULLY READ BEFORE BEGINNING INSTALLATION, OPERATION OR MAINTENANCE OF PUMP AND MUST BE KEPT WITH PUMP. PUMP MUST BE INSTALLED, OPERATED AND MAINTAINED ONLY BY SUITABLY TRAINED AND QUALIFIED PERSONS.

THE FOLLOWING SAFETY INSTRUCTIONS MUST BE FOLLOWED AND ADHERED TO AT ALL TIMES.

Symbol Legend :



Danger - Failure to follow the indicated instruction may result in serious injury or death.

WARNING

Warning - In addition to possible serious injury or death, failure to follow the indicated instruction may cause damage to pump and/or other equipment.



BEFORE opening any liquid chamber (pumping chamber, reservoir, relief valve adjusting cap fitting, etc.) be sure that :

- Any pressure in the chamber has been completely vented through the suction or discharge lines or other appropriate openings or connections.
- The pump drive system means (motor, turbine, engine, etc.) has been "locked out" or otherwise been made non-operational so that it cannot be started while work is being done on the pump.
- You know what material the pump has been handling, have obtained a material safety data sheet (MSDS) for the material, and understand and follow all precautions appropriate for the safe handling of the material.

WARNING

INSTALL pressure gauges/sensors next to the pump suction and discharge connections to monitor pressures.



WARNING

USE extreme caution when lifting the pump. Suitable lifting devices should be used when appropriate. Lifting eyes installed on the pump must be used **only** to lift the pump, **not** the pump with drive and/or base plate. If the pump is mounted on a base plate, the base plate must be used for all lifting purposes. If slings are used for lifting, they must be safely and securely attached. For weight of the pump alone (which does not include the drive and/or base plate) refer to the Viking Pump product catalog.



BEFORE operating the pump, be sure all drive guards are in place.



DO NOT attempt to dismantle a pressure relief valve that has not had the spring pressure relieved or is mounted on a pump that is operating.



DO NOT operate pump if the suction or discharge piping is not connected.



AVOID contact with hot areas of the pump and/or drive. Certain operating conditions, temperature control devices (jackets, heat-tracing, etc.), improper installation, improper operation, and improper maintenance can all cause high temperatures on the pump and/or drive.



DO NOT place fingers into the pumping chamber or its connection ports or into any part of the drive train if there is **any possibility** of the pump shafts being rotated.



WARNING

THE PUMP must be provided with pressure protection. This may be provided through a relief valve mounted directly on the pump, an in-line pressure relief valve, a torque limiting device, or a rupture disk. If pump rotation may be reversed during operation, pressure protection must be provided on **both** sides of pump. Relief valve adjusting screw caps must always point towards suction side of the pump. If pump rotation is reversed, position of the relief valve must be changed. Pressure relief valves cannot be used to control pump flow or regulate discharge pressure. For additional information, refer to Viking Pump's Technical Service Manual TSM 000 and Engineering Service Bulletin ESB-31.



WARNING

DO NOT exceed the pumps rated pressure, speed, and temperature, or change the system/duty parameters from those the pump was originally supplied, without confirming its suitability for the new service.



WARNING

BEFORE operating the pump, be sure that:

- It is clean and free from debris
- all valves in the suction and discharge pipelines are fully opened.
- All piping connected to the pump is fully supported and correctly aligned with the pump.
- Pump rotation is correct for the desired direction of flow.



WARNING

THE PUMP must be installed in a matter that allows safe access for routine maintenance and for inspection during operation to check for leakage and monitor pump operation.

SPECIAL INFORMATION

DANGER !

Before opening any Viking pump liquid chamber (pumping chamber, reservoir, relief valve adjusting cap fitting, etc.)

Be sure:

- 1. That any pressure in the chamber has been completely vented through the suction or discharge lines or other appropriate openings or connections.**
- 2. That the driving means (motor, turbine, engine, etc.) has been “locked out” or made non-operational so that it cannot be started while work is being done on pump.**
- 3. That you know what liquid the pump has been handling and the precautions necessary to safely handle the liquid. Obtain a material safety data sheet (MSDS) for the liquid to be sure these precautions are understood.**

Failure to follow above listed precautionary measures may result in serious injury or death.

ROTATION: Viking pumps operate equally well in a clockwise or counterclockwise rotation. Shaft rotation determines which port is suction and which is discharge. Port in area where pumping elements (gear teeth) come out of mesh is suction port.

PRESSURE RELIEF VALVES:

- 1.** Viking pumps are positive displacement pumps and must be provided with some sort of pressure protection. This may be a relief valve mounted directly on the pump, an inline pressure relief valve, a torque limiting device, a rupture disk or other device.
- 2.** There are relief valve options available on those pump models designed to accept a relief valve. Options may include a return to tank relief valve or a jacketed relief valve. Pumps equipped with a jacketed head plate are generally not available with a relief valve.
- 3.** If pump rotation is reversed during operation, pressure protection must be provided on **both** sides of pump.
- 4.** Relief valve adjusting screw cap must **always** point towards suction side of pump. If pump rotation is reversed, remove pressure relief valve and turn end for end. **Refer to Figures 1, 2, and 4, page 1.**
- 5.** Pressure relief valves should not be used to control pump flow or regulate discharge pressure.

For additional information on pressure relief valves, **Refer to Technical Service Manual TSM000 and Engineering Service Bulletin ESB-31.**

MAINTENANCE

Series 32, 432 and 32E pumps are designed for long, trouble-free service life under a wide variety of application conditions with a minimum of maintenance. The points listed below will help provide long service life.

LUBRICATION - Periodic external lubrication should be applied slowly with a hand gun at all lubrication fittings provided. A good quality of general purpose grease is satisfactory in the majority of cases, however, applications involving very high or low temperatures may require other types of lubricants. Suggested frequency of lubrication is once every 500 hours of operation. Do not over-grease. **Refer to Engineering Service Bulletin ESB-515.** Consult the factory with specific lubrication questions.

PACKING ADJUSTMENT - New packed pumps require some initial packing adjustment to control leakage as packing “runs-in”. Make initial packing adjustments carefully and do not over-tighten the packing gland. After initial adjustment, occasional inspection will reveal the need for packing gland adjustment or replacement of the packing. **Refer to instructions under DISASSEMBLY, page 6 and ASSEMBLY, page 7** regarding repacking the pump.

CLEANING THE PUMP - Keep the pump as clean as possible. This will facilitate inspection, adjustment and repair work and help prevent overlooking a dirt covered grease fitting.

STORAGE - If the pump is to be stored or not used for six months or more, pump must be drained and a light coat of non-detergent SAE 30 weight oil must be applied to all internal pump parts. Lubricate fittings and apply grease to pump shaft extension. Viking suggests rotating pump shaft by hand one complete revolution every 30 days to circulate the oil.

SUGGESTED REPAIR TOOLS: The following tools must be available to properly repair Series 32, 432 and 32E pumps. These tools are in addition to standard mechanics’ tools such as open end wrenches, pliers, screw drivers, etc. Most of the items can be obtained from an industrial supply house.

- 1.** Soft Headed hammer
- 2.** Allen wrenches (some mechanical seals and set collars)
- 3.** Packing hooks, flexible (packed pumps)
Small for up to 5/16”, G-KK (2-810-049-999).
Large for 3/8” and larger, L size and up (2-810-042-999).
- 4.** Brass bar
- 5.** Arbor press

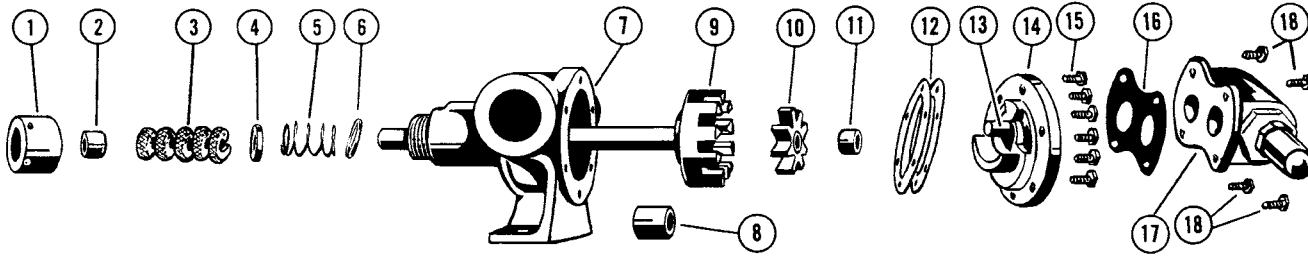


FIGURE 5 - EXPLODED VIEW MODEL G32 PUMP

ITEM	NAME OF PART	ITEM	NAME OF PART	ITEM	NAME OF PART
1	Packing Nut	7	Casing and Bushing Assembly	13	Idler Pin
2	Outer Packing Gland	8	Casing Bushing	14	Head and Idler Pin Assembly
3	Packing Rings	9	Rotor and Shaft Assembly	15	Capscrews for Head
4	Inner Packing Gland	10	Idler and Bushing Assembly	16	Relief Valve Gasket
5	Packing Spring	11	Idler Bushing	17	Relief Valve
6	Packing Spring Washer	12	Head Gasket Set	18	Capscrews for Valve

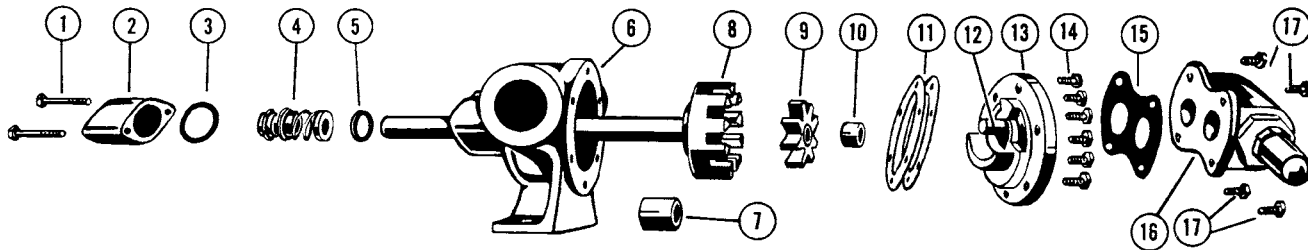


FIGURE 6 - EXPLODED VIEW MODEL G432 PUMP

ITEM	NAME OF PART	ITEM	NAME OF PART	ITEM	NAME OF PART
1	Capscrews for End Cap	7	Casing Bushing	13	Head and Idler Pin Assembly
2	End Cap	8	Rotor and Shaft Assembly	14	Capscrews for Head
3	Gasket for End Cap	9	Idler and Bushing Assembly	15	Relief Valve Gasket
4	Mechanical Seal (Complete)	10	Idler Bushing	16	Relief Valve
5	Set Collar with Setscrew	11	Head Gasket Set	17	Capscrews for Valve
6	Casing and Bushing Assembly	12	Idler Pin		

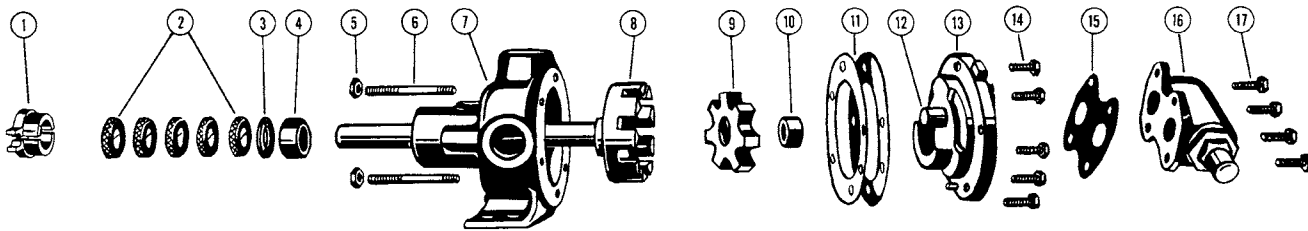


FIGURE 7 - EXPLODED VIEW MODEL H32 AND HL32

ITEM	NAME OF PART	ITEM	NAME OF PART	ITEM	NAME OF PART
1	Two Piece Packing Gland	7	Casing and Bushing Assembly	13	Head and Idler Pin Assembly
2	Packing Rings	8	Rotor and Shaft Assembly	14	Capscrews for Head
3	Packing Retainer Washer	9	Idler and Bushing Assembly	15	Relief Valve Gasket
4	Casing Bushing	10	Idler Bushing	16	Relief Valve
5	Packing Gland Nuts	11	Head Gasket Set	17	Capscrews for Valve
6	Packing Gland Studs	12	Idler Pin		

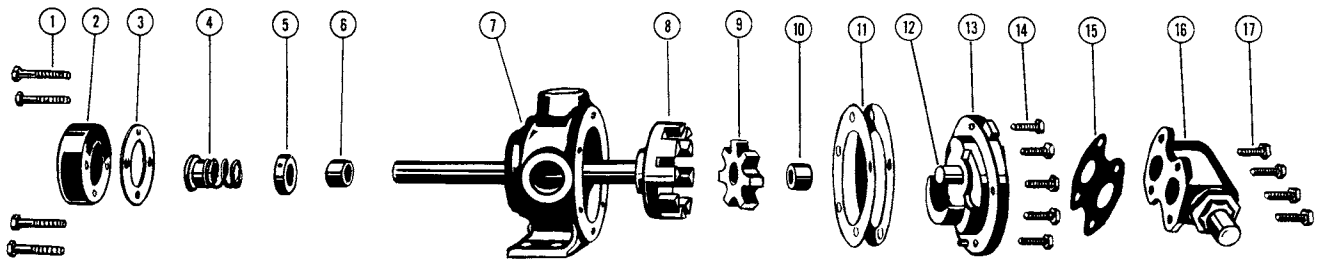


FIGURE 8 - EXPLODED VIEW MODEL H432 AND HL432 PUMP

ITEM	NAME OF PART	ITEM	NAME OF PART	ITEM	NAME OF PART
1	Capscrews for End Cap	7	Casing and Bushing Assembly	13	Head and Idler Pin Assembly
2	End Cap	8	Rotor and Shaft Assembly	14	Capscrews for Head
3	Gasket for End Cap	9	Idler and Bushing Assembly	15	Relief Valve Gasket
4	Mechanical Seal	10	Idler Bushing	16	Relief Valve
5	Set Collar with Setscrew	11	Head Gasket Set	17	Capscrews for Valve
6	Casing Bushing	12	Idler Pin		

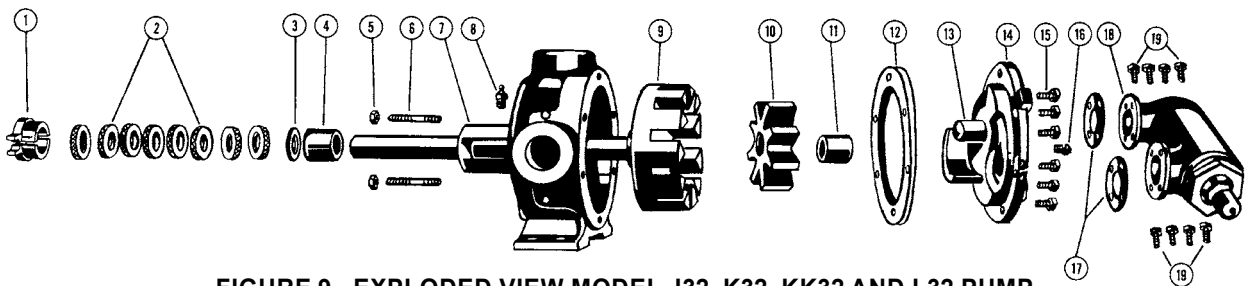


FIGURE 9 - EXPLODED VIEW MODEL J32, K32, KK32 AND L32 PUMP

ITEM	NAME OF PART	ITEM	NAME OF PART	ITEM	NAME OF PART
1	Two Piece Packing Gland	8	Grease Fitting	15	Capscrews for Head
2	Packing Rings	9	Rotor and Shaft Assembly	16	Pipe Plug
3	Packing Retainer Washer	10	Idler and Bushing Assembly	17	Relief Valve Gasket
4	Casing Bushing	11	Idler Bushing	18	Relief Valve
5	Packing Gland Nuts	12	Head Gasket Set	19	Capscrews for Valve
6	Packing Gland Studs	13	Idler Pin		
7	Casing and Bushing Assembly	14	Head and Idler Pin Assembly		

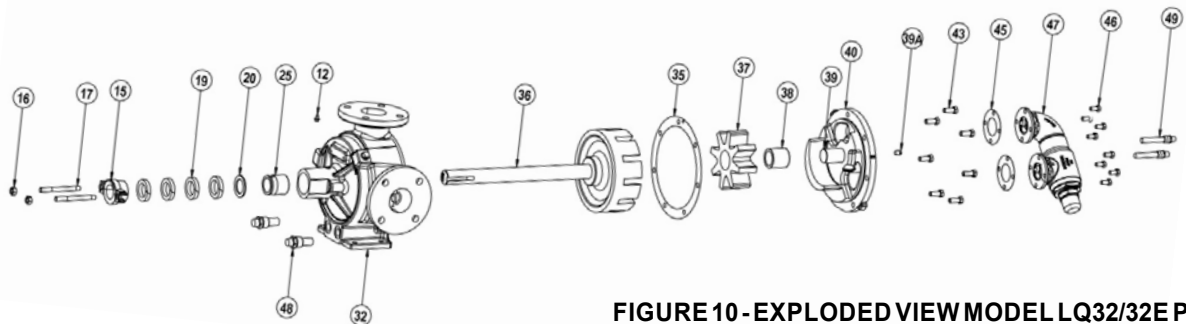


FIGURE 10 - EXPLODED VIEW MODEL LQ32/32E PUMP

ITEM	NAME OF PART	ITEM	NAME OF PART	ITEM	NAME OF PART
12	Grease Fitting	32	Casing and Bushing Assembly	43	Capscrew for Head
15	Packing Gland Kit	35	Head Gasket Set	45	Relief Valve Gasket
16	Packing Gland Nut	36	Rotor and Shaft Assembly	46	Capscrew for Valve
17	Packing Gland Stud	37	Idler and Bushing Assembly	47	Relief Valve
18	Lantern Ring	38	Idler Bushing	48*	Heater Cartridges for Casing
19	Packing	39	Idler Pin	49*	Heater Cartridges for Head
20	Packing Retainer Washer	39A	Pipe Plug		
25	Casing Bushing	40	Head and Idler Pin Assembly		

* Applies to the 32E Series Only

NOTE: J SIZE DISCONTINUED AS OF 1Q16.

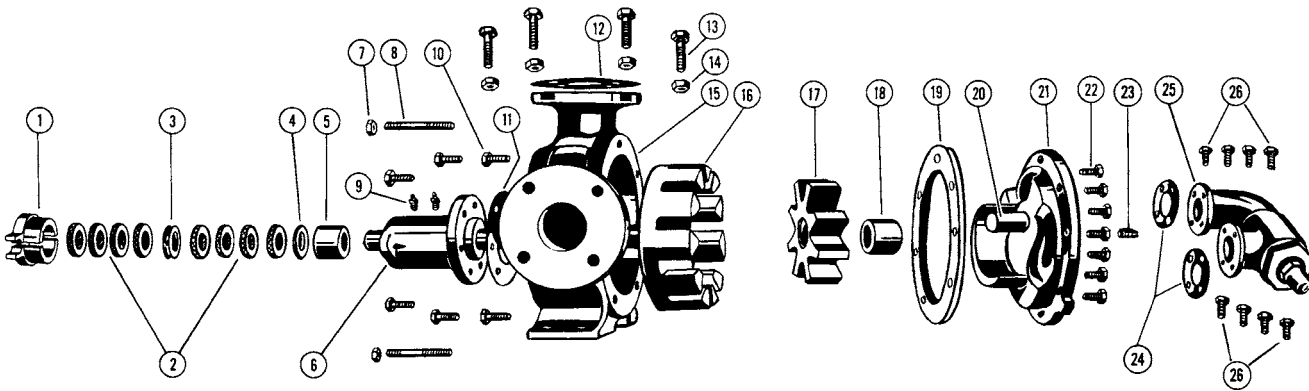


FIGURE 11 - EXPLODED VIEW MODEL LL32 PUMP

ITEM	NAME OF PART	ITEM	NAME OF PART	ITEM	NAME OF PART
1	Two Piece Packing Gland	10	Capscrews for Rotor Bearing Sleeve	19	Head Gasket Set
2	Packing Rings	11	Gasket for Rotor Bearing Sleeve	20	Idler Pin
3	Lantern Ring	12	Pipe Flange Gasket	21	Head and Idler Pin Assembly
4	Packing Retainer Washer	13	Capscrews for Flanges	22	Capscrews for Head
5	Bushing for Rotor Bearing Sleeve	14	Nuts for Flanges	23	Pipe Plug
6	Rotor Bearing Sleeve and Bushing Assembly	15	Casing	24	Relief Valve Gaskets
7	Packing Gland Nuts	16	Rotor and Shaft Assembly	25	Relief Valve Assembly
8	Packing Gland Studs	17	Idler and Bushing Assembly	26	Capscrews for Valve
9	Grease Fitting	18	Idler Bushing		

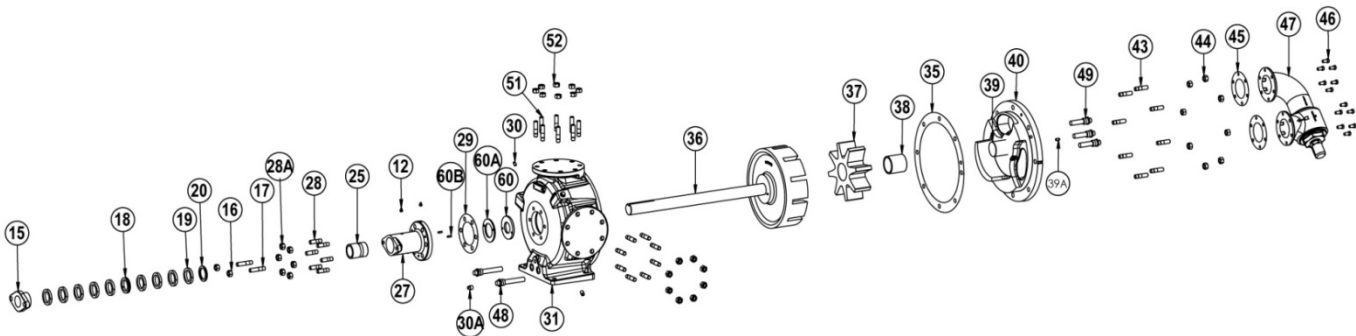


FIGURE 12 - EXPLODED VIEW MODEL Q32/Q32E, M32/M32E AND N32/N32E PUMP

ITEM	NAME OF PART	ITEM	NAME OF PART	ITEM	NAME OF PART
12	Grease Fitting	30	Pipe Plug	44	Nut for Head
15	Packing Gland	30A	Pipe Plug	45	Relief Valve Gasket
16	Packing Gland Nut	31	Casing	46	Capscrew for Valve
17	Packing Gland Stud	35	Head Gasket Set	47	Relief Valve
18	Lantern Ring	36	Rotor and Shaft Assembly	48*	Heater Cartridges for Casing
19	Packing	37	Idler and Bushing Assembly	49*	Heater Cartridges for Head
20	Packing Retainer Washer	38	Idler Bushing	51	Stud for Flanges
25	Bushing for Rotor Bearing Sleeve	39	Idler Pin	52	Nut for Flanges
27	Rotor Bearing Sleeve and Bushing	39A	Pipe Plug	60	Rotor Thrust Washer
28	Stud for Rotor Bearing Sleeve	40	Head and Idler Pin Assembly	60A	Rotor Bearing Sleeve Washer
28A	Nut for Rotor Bearing Sleeve	43	Stud for Head	60B	Self Lock Pin
29	Gasket for Rotor Bearing Sleeve				

* Applies to the 32E Series Only. The number of Heater Cartridges for Head varies by pump size.

DISASSEMBLY

DANGER !

Before opening any Viking pump liquid chamber (pumping chamber, reservoir, relief valve adjusting cap fitting, etc.)

Be sure:

1. That any pressure in the chamber has been completely vented through the suction or discharge lines or other appropriate openings or connections.
2. That the driving means (motor, turbine, engine, etc.) has been "locked out" or made non-operational so that it cannot be started while work is being done on pump.
3. That you know what liquid the pump has been handling and the precautions necessary to safely handle the liquid. Obtain a material safety data sheet (MSDS) for the liquid to be sure these precautions are understood.

Failure to follow above listed precautionary measures may result in serious injury or death.

1. Refer to figures 5 through 12 for name of parts.
2. Mark head and casing before disassembly to insure proper reassembly. The idler pin, which is offset in pump head, must be positioned toward and equal distance between port connections to allow for proper flow of liquid through pump.
3. Remove the head capscrews.
NOTE: The four valve capscrews, valve and gasket must be removed from the G models before the six head capscrews are removed.
4. Do not allow idler to fall from idler pin. Tilt top of head back when removing to prevent this. Remove head from pump. Avoid damaging head gasket set, all gaskets are required to maintain end clearance.
5. Remove idler and bushing assembly. If idler bushing needs replacing, refer to **INSTALLATION OF CARBON GRAPHITE BUSHINGS, page 9.**

Remove the packing gland, packing and packing retainer washer.

If you have a mechanical seal pump, remove the end cap and the mechanical seal is exposed. For K and L 432, consult factory.

Remove the mechanical seal by sliding off the end of the shaft. Loosen the setscrew in the set collar and remove it.

CAUTION: Older pumps may have snap ring on shaft- remove the snap ring before removing rotor and shaft. Carefully remove the rotor and shaft from the pump to avoid damaging the casing or rotor bearing sleeve bushing.

THRUST WASHERS: Rotor thrust washer and rotor bearing sleeve thrust washer used in Q, M and N size pumps should be removed, examined for excessive wear and replaced if necessary. These thrust washers are located on the hub of the rotor and the casing end of rotor bearing sleeve.

If it is necessary to replace the bushing in the casing, rotor bearing sleeve or idler and/or repack the pump, remove the old packing and lantern ring and packing retainer washer. G-LQ pumps don't have a lantern ring.

Clean all parts thoroughly and examine for wear and/or damage. Check bushings, and idler pin and replace if necessary. Check all other parts for nicks, burrs, excessive wear and replace if necessary.

ASSEMBLY

1. Install bushing into casing or rotor bearing sleeve. If bushing has a lubrication groove, install bushing with groove at 12:00 o'clock position in bracket. If carbon graphite, refer to **INSTALLATION OF CARBON GRAPHITE BUSHINGS, page 9.**
2. Thrust washers used in Q, M and N size pumps should be assembled on the rotor hub and rotor bearing sleeve. Put the plain washer on the two locating pins on the rotor hub. Put the grooved face washer on the pins on the rotor bearing sleeve with the grooved face toward the rotor.
3. Coat shaft of rotor shaft assembly with non-detergent SAE 30 weight oil. Start end of shaft in bracket bushing turning from right to left, slowly pushing rotor into casing.
4. Place the head gaskets on the head. The proper amount of gaskets should be used to provide the necessary end clearance within the pump so it turns freely with no appreciable end play. The Gasket Table (**Figure 13**) gives the normal amount of gaskets used on each pump.
5. Coat idler pin with non-detergent SAE 30 weight oil and place idler and bushing on idler pin in head. If replacing carbon graphite bushing, refer to **INSTALLATION OF CARBON GRAPHITE BUSHINGS, page 9.**
6. The head can now be assembled on the pump. Tilt the top of the head away from the pump slightly until the crescent enters the inside diameter of the rotor and rotate the idler until its teeth mesh with the rotor teeth. Do not damage the head gaskets. Tighten the head capscrews or nuts and then check the end clearance. If the pump shaft cannot be rotated, more gaskets must be added. If, however, the pump has any noticeable end play, remove enough gaskets so the pump has no appreciable end play but still turns freely.

PUMP MODEL	NORMAL AMOUNT USED	ONE SET OF GASKETS CONSISTS OF THE FOLLOWING	STANDARD END CLEARANCE
G32 G432	.010" - .015"	2 - .006" 1 - .005" 2 - .002"	.003"
H, HL32 H, HL432	.010" - .015"	2 - .006" 2 - .002"	.003"
J, K, KK32	.015" - .020"	1 - .015" 1 - .010" 1 - .006"	.005"
L, LQ, LL32	.025" - .030"	1 - .015" 1 - .010" 1 - .006"	.005"
LQ32E	.025" - .030"	1 - .015" 1 - .010" 1 - .006"	.010"
Q32	.012" - .030"	2 - .015" 1 - .006"	.010"
Q32E	.012" - .030"	2 - .015" 1 - .006"	.015"
M, N32	.015" - .036"	2 - .015" 1 - .006"	.015"
M, N32E	.015" - .036"	2 - .015" 1 - .006"	.020"

FIGURE 13 - GASKET TABLE

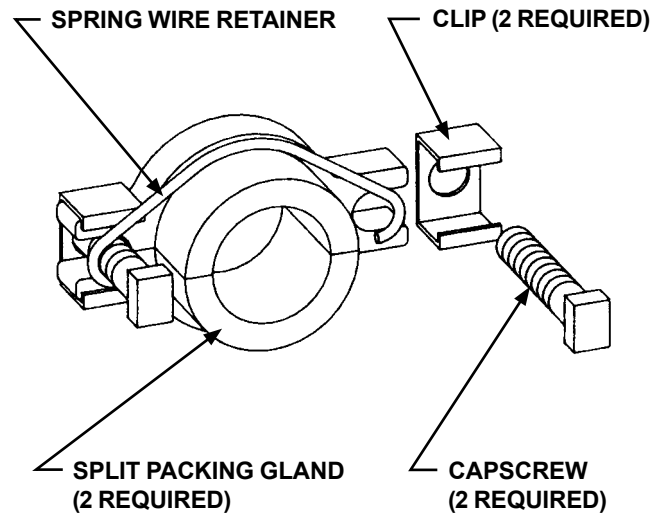


FIGURE 14

- Place packing retainer washer in bottom of packing chamber and pack pump with new packing. Use packing suitable for liquid being pumped. Install packing, staggering the joints from one side of shaft to other. Lubricate packing rings with oil, grease or graphite to aid assembly. A length of pipe will help to seat each packing ring.

NOTE: If the pump has a lantern ring it must be located below the grease fitting. The grease fitting may be removed to facilitate positioning of the lantern ring.

- Install packing gland, capscrews and nuts.

DANGER !

Before starting pump, be sure all drive equipment guards are in place.

Failure to properly mount guards may result in serious injury or death.

NOTE: Pump may be equipped with a 2-piece split packing gland. See Figure 14.

MECHANICAL SEAL OPTION

Install the mechanical seal: Place the set-collar on the shaft and tighten setscrew. See Figure 15, page 9 for set-collar location.

The seal used in this pump is simple to install and good performance will result if care is taken during installation.

The principle of the mechanical seal is contact between the rotary and stationary members. These parts are lapped to a high finish and their seating effectiveness depends on complete contact.

Once rotating position of mechanical seal is installed on rotor shaft, it is necessary to assemble parts as quickly as possible to ensure seal does not stick to shaft in the wrong axial position. The seal should be expected to stick to shaft after several minutes setting time.

- Never touch sealing faces with anything except clean hands or clean cloth. Minute particles can scratch the seal faces and cause leakage.
- The spring washer and spring must be put on the shaft first and in that order. (See Figure 15, page 9).
- Spread a film of lubricating oil on the inside diameter of the synthetic rubber bellows. Check the end of the pump shaft for sharp burrs or edges which might cut the bellows. Slide the seal rotary member over the shaft and up against the spring.
- Coat the synthetic rubber seal seat with lubricating oil and push the seal seat into the end cap. Put the end cap gasket on the end of the casing. Slide end cap over the shaft and flush both the seal seat and carbon wear ring in the seal rotary member with oil. Push the end cap up until the mating surfaces of the seal meet. Install the capscrews and tighten evenly.

PRESSURE RELIEF VALVE INSTRUCTIONS

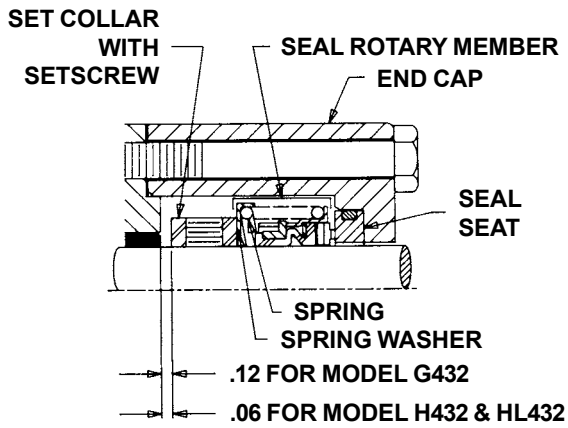


FIGURE 15 - SECTIONAL VIEW, SEAL AREA

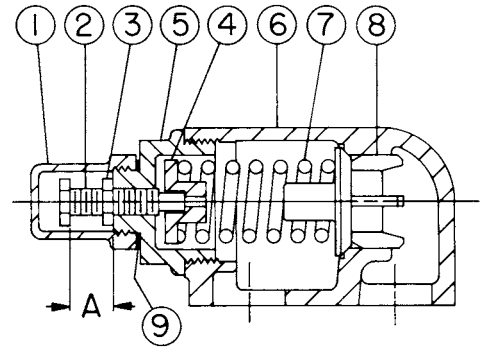


FIGURE 16 - SIZE G, H AND HL

INSTALLATION OF CARBON GRAPHITE BUSHINGS

When installing carbon graphite bushings, extreme care must be taken to prevent breaking. Carbon graphite is a brittle material and easily cracked. If cracked, the bushing will quickly disintegrate. Using a lubricant and adding a chamfer on the bushing and the mating part will help in installation. The additional precautions listed below must be followed for proper installation:

1. A press must be used for installation.
2. Be certain bushing is started straight.
3. Do not stop pressing operation until bushing is in proper position. starting and stopping will result in a cracked bushing.
4. Check bushing for cracks after installation.

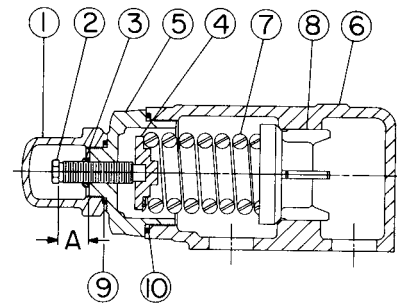


FIGURE 17 - SIZE AK AND AL

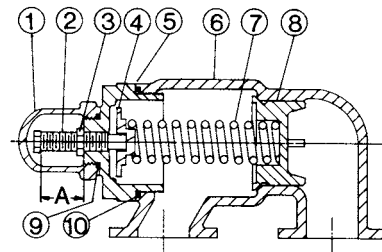


FIGURE 18 - SIZE K, KK, L, LQ AND LL

VALVE - LIST OF PARTS	
1. Valve Cap	6. Valve Body
2. Adjusting Screw	7. Valve Spring
3. Lock Nut	8. Poppet
4. Spring Guide	9. Cap Gasket
5. Bonnet	10. Bonnet O-ring

DISASSEMBLY

DANGER !

Before opening any Viking pump liquid chamber (pumping chamber, reservoir, relief valve adjusting cap fitting, etc.)

Be sure:

- 1. That any pressure in the chamber has been completely vented through the suction or discharge lines or other appropriate openings or connections.**
- 2. That the driving means (motor, turbine, engine, etc.) has been “locked out” or made non-operational so that it cannot be started while work is being done on pump.**
- 3. That you know what liquid the pump has been handling and the precautions necessary to safely handle the liquid. Obtain a material safety data sheet (MSDS) for the liquid to be sure these precautions are understood.**

Failure to follow above listed precautionary measures may result in serious injury or death.

Mark valve and head before disassembly to insure proper reassembly.

1. Remove valve cap.
2. Measure and record length of extension of adjusting screw. Refer to “A” on Figures 16, 17 and 18, page 9.
3. Loosen locknut and back out adjusting screw until spring pressure is released.
4. Remove bonnet, spring guide, spring and poppet from valve body. Clean and inspect all parts for wear or damage and replace as necessary.

ASSEMBLY

DANGER !

Before starting pump, be sure all drive equipment guards are in place.

Failure to properly mount guards may result in serious injury or death.

Reverse procedures outlined under Disassembly. If valve is removed for repairs, be sure to replace in same position. Relief valve adjusting screw cap must always point towards suction side of pump. If pump rotation is reversed, remove relief valve and turn end for end. Refer to Figures 1, 2, and 4, page 1.

PRESSURE ADJUSTMENT

If a new spring is installed or if pressure setting of pressure relief valve is to be changed from that which the factory has set, the following instructions must be carefully followed.

1. Install a pressure gauge in discharge line for actual adjustment operation. Do not deadhead pump for more than 30 seconds at a time.
2. Carefully remove valve cap which covers adjusting screw.
Loosen locknut which locks adjusting screw so pressure setting will not change during operation of pump.
3. Turn adjusting screw in to increase pressure and out to decrease pressure.
4. With discharge line closed at a point beyond pressure gauge, gauge will show maximum pressure valve will allow while pump is in operation.

IMPORTANT

In ordering parts for pressure relief valve, always give model number and serial number of pump as it appears on nameplate and name of part wanted. When ordering springs, be sure to give pressure setting desired.

HEAT CARTRIDGES

This section applies to 32E Series only.

ASSEMBLY

INSTALLATION INSTRUCTIONS:

WARNING !

The pump needs to be properly grounded before the heat cartridges are installed.

1. Spacers should be installed between the foot of the pump and the base. This will create an air gap between the pump and base to limit heat transfer to the base.
2. Coat the threads of the heat cartridge with an anti-seize compound prior to installation. Install heat cartridges into the tapped ports on the head and bracket in the locations shown in the Figure 13 below. Figure 13 also shows the minimum clearance around the pump needed to install and remove the heat cartridges as well as the location for the thermocouple. The number of heaters used and the total wattage for each pump size is given in Table 2 below. 3/8" heat cartridges should be tightened to 10ft-lbs. 1/2" and 3/4" heat cartridges should be tightened to 20 ft-lbs.
3. Viking recommends installing a closed loop temperature controller with a control algorithm that will minimize or prevent overshooting the set point temperature. The set point temperature needs to be slightly higher than the melting point and significantly lower than the flash point or boiling point of the liquid being pumped. Viking does offer a controller for use with our heat cartridges. Ask your local Viking distributor for details.

WARNING !

Setting the set point temperature higher than necessary will not make the pump heat any faster and will shorten the life of the heat cartridges.

- 4. Properly insulate the pump to minimize heat loss. The pump will not heat properly if it is not insulated.

WARNING !

- **Always disconnect, lockout, and tag out supply circuits prior to installing. The installation must comply with standard and local regulations.**
- **Pay special attention to this section and the parts marked “WARNING!” or “DANGER”.**
- **All wiring should be done by a licensed electrician to meet local codes. Study this manual thoroughly before installing and using the heat cartridges.**
- **Should questions or uncertainties arise, please contact your authorized Viking distributor.**
- **Failure to follow these instructions may cause an electrical shock and/or sparks, which may result in serious injury or death.**

NOTE:

1. Heat cartridges, temperature probes, and controllers
2. Heat cartridges require 240VAC, 1 Phase, 60 Hz or 220VAC, 1 Phase, 50 Hz power supply.
3. Heat cartridges are UL, CSA, & CE marked, RoHs compliant.
4. Heat cartridges and cables are water resistant but not water proof. They need to be installed in a protected area.
5. To make sure that the liquid within the pump is melted and to avoid damage to the pump, do not start the pump until the set point temperature has been reached.
6. Several factors such as the size of pump, the set point temperature, and the insulation will affect the amount of time it will take for the pump to reach the set point temperature. Typically it will take 3-4 hours for the pump to reach its set point temperature.
7. Do not use heat cartridges with different watt densities from those supplied by Viking. Changing watt densities may result in localized over or under heating.
8. The thermocouple or temperature probe must be installed in the bracket location shown in Figure 13 below. Any other location may result in localized over or under heating.
9. Please see TSM 312 for technical information on the Viking supplied controller for the heat cartridges.
10. The wires for the heat cartridges can be joined together in a junction box, and a single wire from the junction box can be connected to the controller.
11. **WARNING** Heat cartridges will be hot. Do not touch pump or heat cartridges until they have been allowed to cool.

Dimensions - LQ through N Sizes – Electrically Heated – Non Jacketed

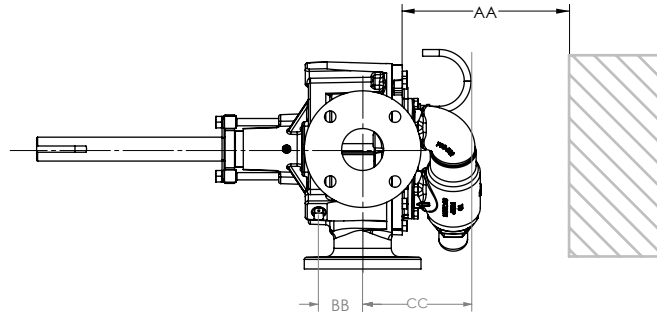


FIG. 19 - HEAT CARTRIDGE LOCATIONS AND NUMBER OF HEAT CARTRIDGES IN EACH PUMP MODEL

Model	Temp Probe to Port Center Line (BB)		Head Heater to Port Center Line (CC)		Required to Remove Heater (AA)		Number of Heaters in Head	Number of Heaters in Casing	Total Wattage
	Inch	mm	Inch	mm	Inch	mm			
LQ32E	2.54	64.5	5.75	146.1	7.00	177.8	2	2	1200
Q32E	2.85	72.4	8.25	209.6	9.25	234.95	3	N/A	1500
M32E	2.64	67.1	8.25	209.6	9.25	234.95	3	2	2250
N32E	5.05	128.2	8.25	209.6	9.25	234.95	2	2	2500



TECHNICAL SERVICE MANUAL
GENERAL PURPOSE PUMPS
SERIES 32, 432 AND 32E
SIZES G - N

SECTION	TSM 312
PAGE	12 OF 12
ISSUE	J

VIKING PUMP

WARRANTY

Viking pumps, strainers and reducers are warranted to be free of defects in material and workmanship under normal conditions of use and service. The warranty period varies by type of product. A Viking product that fails during its warranty period under normal conditions of use and service due to a defect in material or workmanship will be repaired or replaced by Viking. At Viking's sole option, Viking may refund (in cash or by credit) the purchase price paid to it for a Viking product (less a reasonable allowance for the period of use) in lieu of repair or replacement of such Viking product. Viking's warranty is subject to certain restrictions, limitations, exclusions and exceptions. A complete copy of Viking's warranty, including warranty periods and applicable restrictions, limitations, exclusions and exceptions, is posted on Viking's website (www.vikingpump.com/warranty/warranty-info). A complete copy of the warranty may also be obtained by contacting Viking through regular mail at Viking Pump, Inc., 406 State Street, Cedar Falls, Iowa 50613, USA.

THIS WARRANTY IS AND SHALL BE VIKING'S SOLE AND EXCLUSIVE WARRANTY AND IS IN LIEU OF ALL OTHER WARRANTIES, EXPRESS OR IMPLIED, INCLUDING, BUT NOT LIMITED TO, ALL WARRANTIES OF MERCHANTABILITY, FITNESS FOR A PARTICULAR PURPOSE AND NON-INFRINGEMENT, ALL OF WHICH OTHER WARRANTIES ARE EXPRESSLY EXCLUDED.

THE RIGHTS AND REMEDIES UNDER THIS WARRANTY ARE AND SHALL BE THE SOLE AND EXCLUSIVE RIGHTS AND REMEDIES AGAINST VIKING. EXCEPT FOR THE SPECIFIC LIABILITIES AND OBLIGATIONS PROVIDED UNDER THIS WARRANTY, VIKING SHALL HAVE NO LIABILITY OR OBLIGATION WITH RESPECT TO ANY PRODUCT CLAIMED TO BE DEFECTIVE IN ANY MANNER.

UNDER NO CIRCUMSTANCES SHALL VIKING BE LIABLE UNDER THIS WARRANTY OR OTHERWISE FOR SPECIAL, INCIDENTAL, INDIRECT, CONSEQUENTIAL OR PUNITIVE DAMAGES OF ANY KIND, INCLUDING, BUT NOT LIMITED TO, LOST OR UNREALIZED SALES, REVENUES, PROFITS, INCOME, COST SAVINGS OR BUSINESS, LOST OR UNREALIZED CONTRACTS, LOSS OF GOODWILL, DAMAGE TO REPUTATION, LOSS OF PROPERTY, LOSS OF INFORMATION OR DATA, LOSS OF PRODUCTION, DOWNTIME, OR INCREASED COSTS, IN CONNECTION WITH ANY PRODUCT, EVEN IF VIKING HAS BEEN ADVISED OR PLACED ON NOTICE OF THE POSSIBILITY OF SUCH DAMAGES AND NOTWITHSTANDING THE FAILURE OF ANY ESSENTIAL PURPOSE OF ANY PRODUCT.

NOTE: J SIZE DISCONTINUED AS OF 1Q16.

