

VIKING GENERAL PURPOSE INTERNAL GEAR PUMPS

SERIES 32 & 432

| | |
|---------|-------|
| Section | 310 |
| Page | 310.1 |
| Issue | J |

Series Description

Viking General Purpose Series 32 pumps are extremely well suited for light, medium and intermittent service handling a variety of liquids. The smaller sizes “C”, “F” and “FH” are constructed for heavier duty service. Mechanical seal equipped General Purpose pump models in sizes from “C” thru “HL” shown in this section are available with Underwriters label for handling fuel oil. Model numbers for these pumps must be designated by a suffix -X. “UL” listed models can be equipped with integral relief valve. The additional sizes of unmounted General Purpose pumps are illustrated on the following page. Also for continuous service and for handling viscous liquids, see Viking’s line of heavy duty pumps, Section 630.

Viking’s unique and unusually simple pump construction makes it adaptable to many diversified installations. The pumps possess excellent vacuum characteristics and will operate and prime at suction lifts up to 25 feet, depending upon the vaporization point of volatile liquids. Because of the cushioned action in providing a continuous and steady stream of liquid without splashing, pounding, foaming or churning, the Viking pump is adaptable to an unlimited number of industrial applications.

All sizes of Viking General Purpose pumps have tapped ports except “LQ”, “LL”, “Q”, “M” and “N” sizes. These have flanged ports ready to accept companion flanges.

“K” through “N” sizes are furnished with conventional packing as standard. A cartridge style triple lip sealing option is available for the “K” through “N” sizes, contact the factory for details.

A supporting anti-friction bearing pillow block is recommended for the end of the pump shaft on all V-belt driven units.



Operating Range:

| | | | |
|-------------------|----------------------------|---------------|--|
| ② Nominal Flow | GPM | .5 to 450 | |
| | m ³ /h | .1 to 102 | |
| ① Pressure Range | C, F, FH | PSI | 250 PSI for 100 SSU & above 100 PSI for less than 100 SSU ③ |
| | | Bar | 17 BAR for 21 cSt & above 7 BAR for less than 21 cSt |
| | G, H, HL, K, KK, L, LQ, LL | PSI | 100 PSI for 100 SSU & above 50 PSI for less than 100 SSU |
| | | Bar | 7 BAR for 21 cSt & above 3 BAR for less than 21 cSt |
| | Q, M, N | PSI | 75 PSI for 100 SSU & above 50 PSI for less than 100 SSU |
| | | Bar | 5 BAR for 21 cSt & above 3 BAR for less than 21 cSt |
| ① Temp. Range | °F | -60 to +450 | |
| | °C | -51 to +232 | |
| ① Viscosity Range | SSU | 31 to 250,000 | |
| | cSt | 1 to 55,000 | |

① See following pages or consult factory for specific recommendations on individual models or sizes.

② Nominal capacities based on handling thin liquids.

③ 150 PSI (7 BAR) handling fuel oil less than 100 SSU (21 cSt).

Nominal Flow Rates:

| Pump Size | GPM | m ³ /h | RPM |
|-----------|-----|-------------------|------|
| C | .5 | .1 | 1800 |
| F | 1.5 | .3 | 1800 |
| FH | 3 | .7 | 1800 |
| G | 5 | 1 | 1200 |
| H | 10 | 2 | 1200 |
| HL | 20 | 4.5 | 1200 |
| K | 35 | 8 | 420 |
| KK | 50 | 11 | 420 |
| L | 90 | 20 | 420 |
| LQ | 90 | 20 | 420 |
| LL | 140 | 32 | 520 |
| Q | 200 | 45 | 350 |
| M | 280 | 64 | 280 |
| N | 450 | 102 | 280 |

| | |
|---------|-------|
| Section | 310 |
| Page | 310.2 |
| Issue | J |

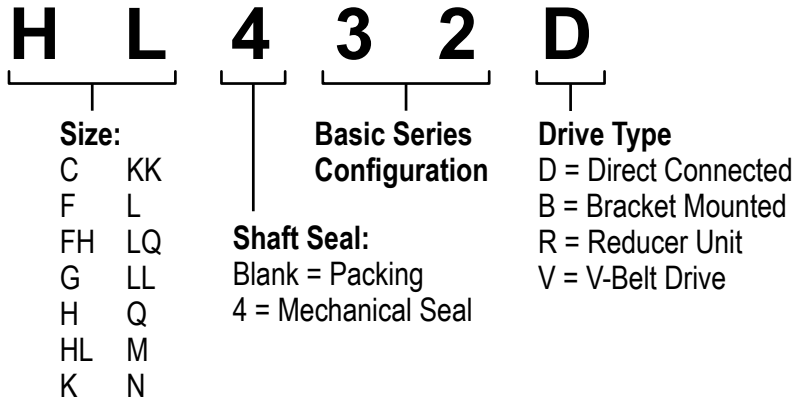
VIKING GENERAL PURPOSE INTERNAL GEAR PUMPS

SERIES 32 & 432

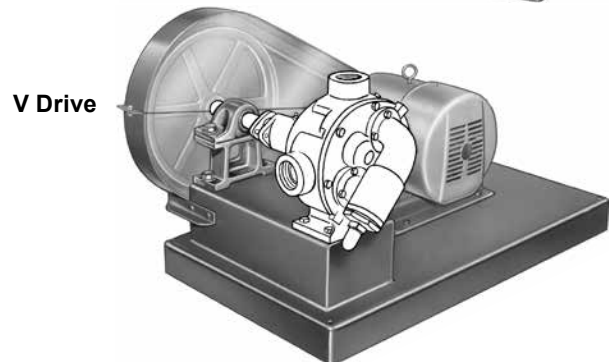
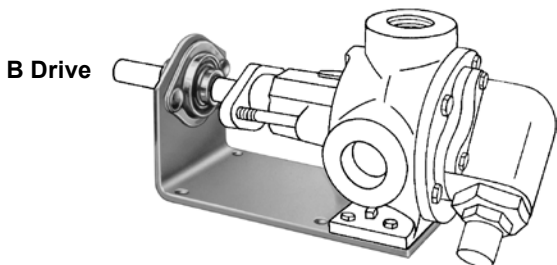
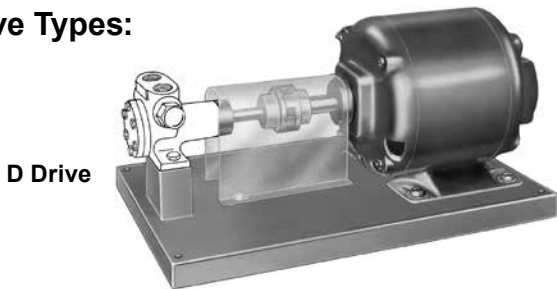
Key Features and Benefits:

- **Relief Valve on Casing or Head**
 - The integral pressure relief valve on casing or head permits by-passing of liquid from discharge back to suction side of pump. Reverse valve when reversing pump rotation on large pumps. Small pumps with relief valve built with right hand suction as standard.
- **Steam Jacketed Head**
 - Jacketed head or plate permits temperature control of the liquid being pumped. Jacketed plate available on "G" through "LL" size pumps. Jacketed head available on "Q" through "N" sizes. Relief valve not available with jacketed head or plate. For complete jacketed pumps, see Section 430.
- **Upright, Opposite & Right Angle Ports**
 - "C", "F" and "FH" size pumps furnished with upright port casings: "G" size pump with opposite port casing and "H" through "N" size pumps with right angle port casings. Right hand port determined by location of side port when facing pump from shaft end.
- **Mechanical Seal**
 - "G", "H" and "HL" sizes illustrated. All General Purpose pumps are available with packed stuffing boxes. Mechanical seals are available on "C" through "HL" size pumps as standard. The seal is a rotary type packaged unit that is simple and self-adjusting. It works WITH rather than against pressure.

Model Number Key:



Drive Types:



VIKING GENERAL PURPOSE INTERNAL GEAR PUMPS

SERIES 32 & 432

| | |
|---------|-------|
| Section | 310 |
| Page | 310.3 |
| Issue | J |

Materials of Construction - Series 32 & ①432

| Standard Component | | Standard Material | | |
|-----------------------|----------------------------|-------------------|-----------------|---------------------------|
| | | C, F, FH | G, H, HL | K, KK, L, LQ, LL, Q, M, N |
| Casing | | Iron | Iron | Iron |
| Head | | Iron | Iron | Iron |
| Rotor | | Steel | Iron | Iron |
| Rotor Shaft | | Steel | Steel | Steel |
| Idler | | Powdered Metal | Powdered Metal | Iron |
| Idler Pin | | Nitralloy | Steel | Steel |
| Bushings | Series 32 Packed | Carbon Graphite | Bronze | Bronze |
| | Series 432 Mechanical Seal | ③ Carbon Graphite | Carbon Graphite | --- |
| Internal Relief Valve | | ② Iron | Iron | Iron |

- ① Buna N elastomer used in Mechanical Seal of 432 Series pumps.
- ② Valve integral with pump casing. Right hand suction only.
- ③ Mechanical seal seat has bronze bushing.

Specifications - Unmounted Pumps

| Packed | ① Mech. Seal | ⑥ Port Size | Nominal Pump Rating | | | Motor HP Required at Rated Speed Pumping 100 SSU Liquid | | | Maximum Recommended Discharge Pressure PSIG | | | Maximum Recommended Temperature for Cataloged Pump | | | | Steel Fitted Construction Recommended Above This Viscosity | | Maximum Hydrostatic Pressure | | Approximate Shipping Weight With Valve | |
|--------|-----------------|----------------|---------------------|-----|------|---|----|-----|---|-----|-------|--|-------|------------|-------|--|---------|------------------------------|-----|--|-------|
| | | | | | | | | | | | | Packed | | Mech. Seal | | SSU | cSt | PSI | BAR | Lb | KG |
| | | | | | | | | | | | | °F | °C | °F | °C | | | | | | |
| C32 | C432 | ¼ | ½ | .11 | 1800 | ¼ | ¼ | ¼ | 100 | 150 | ③ 250 | ④ 300 | ④ 149 | ④ 225 | ④ 107 | --- | --- | 750 | 50 | 5 | 2.3 |
| F32 | F432 | ½ | 1½ | .34 | 1800 | ¼ | ¼ | ¼ | 100 | 150 | ③ 250 | ④ 300 | ④ 149 | ④ 225 | ④ 107 | --- | --- | 750 | 50 | 6 | 2.7 |
| FH32 | FH432 | ½ | 3 | .68 | 1800 | ¼ | ¼ | ⅓ | 100 | 150 | ③ 250 | ④ 300 | ④ 149 | ④ 225 | ④ 107 | --- | --- | 750 | 50 | 6 | 2.7 |
| G32 | G432 | 1 | 5 | 1.1 | 1200 | ⅓ | ½ | ¾ | 50 | --- | 100 | 300 | 149 | 225 | 107 | ① 25,000 | ① 5,500 | 400 | 28 | 15 | 6.8 |
| H32 | H432 | 1 | 10 | 2.3 | 1200 | ½ | ¾ | 1½ | 50 | --- | 100 | 300 | 149 | 225 | 107 | ① 25,000 | ① 5,500 | 400 | 28 | 20 | 9.1 |
| HL32 | HL432 | 1½ | 20 | 4.5 | 1200 | ¾ | 1½ | 2 | 50 | --- | 100 | 300 | 149 | 225 | 107 | ① 7,500 | ① 1,650 | 400 | 28 | 26 | 11.8 |
| K32 | --- | 1½ | 35 | 8 | 420 | 1 | 2 | 5 | 50 | --- | 100 | 300 | 149 | --- | --- | 25,000 | 5,500 | 400 | 28 | 65 | 29.5 |
| KK32 | --- | 2 | 50 | 11 | 420 | 1½ | 3 | 5 | 50 | --- | 100 | 300 | 149 | --- | --- | 7,500 | 1,650 | 400 | 28 | 70 | 31.8 |
| L32 | --- | 2 | 90 | 20 | 420 | 3 | 5 | 10 | 50 | --- | 100 | 300 | 149 | --- | --- | 25,000 | 5,500 | 400 | 28 | 120 | 54.5 |
| LQ32 | --- | ② 2½ | 90 | 20 | 420 | 3 | 5 | 10 | 50 | --- | 100 | 300 | 149 | --- | --- | 25,000 | 5,500 | 400 | 28 | 125 | 56.8 |
| LL32 | --- | ② 3 | 140 | 32 | 520 | 5 | 7½ | 15 | 50 | --- | 100 | 300 | 149 | --- | --- | 7,500 | 1,650 | 400 | 28 | 135 | 61.3 |
| Q32 | --- | ② 3 | 200 | 45 | 350 | 7½ | 10 | --- | 50 | --- | 75 | 300 | 149 | --- | --- | 7,500 | 1,650 | 400 | 28 | 335 | 152.1 |
| M32 | --- | ② 4 | 280 | 63 | 280 | 10 | 15 | --- | 50 | --- | 75 | 300 | 149 | --- | --- | 25,000 | 5,500 | 400 | 28 | 500 | 227 |
| N32 | --- | ② 5 | 450 | 102 | 280 | 15 | 25 | --- | 50 | --- | 75 | 300 | 149 | --- | --- | 2,500 | 550 | 400 | 28 | 670 | 304.2 |

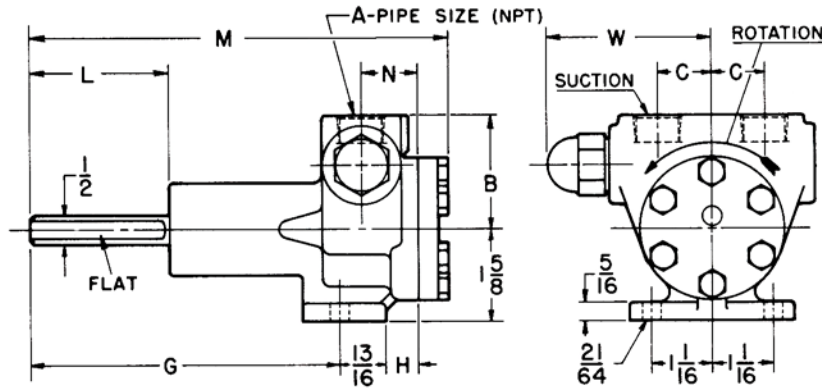
- ① Mechanical Seal pumps not recommended on applications with viscosities above 15,000 SSU (3,300 cSt).
- ② Ports are suitable for use with 125# ANSI cast iron or 150# ANSI steel companion flanges or flanged fittings. All others tapped for standard pipe.
- ③ With extra clearance, pumps can be used to 500 PSI (34 BAR) on intermittent duty.
- ④ With special construction, temperature to 500°F. can be handled with seal pumps and to 650°F. with packed pumps. Consult factory.
- ⑤ Not available in steel fitted construction.
- ⑥ Right hand port only.

| | |
|---------|-------|
| Section | 310 |
| Page | 310.4 |
| Issue | J |

VIKING GENERAL PURPOSE INTERNAL GEAR PUMPS

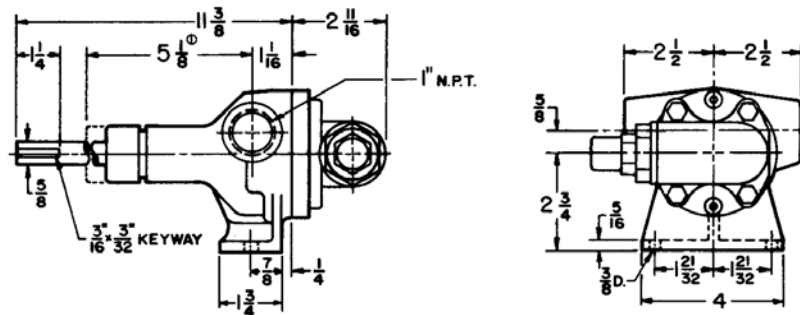
SERIES 32 & 432

Dimensions C - F - FH 32 & 432 (Unmounted Pumps)



| MODEL NO. | | A | B | C | G | H | L | M | N | W |
|-----------|-------|-----|---------|--------|---------|--------|-------|---------|-----|--------|
| PACKED | SEAL | | | | | | | | | |
| C32 | C432 | 1/4 | 1 11/16 | 3/4 | 4 25/32 | 1 7/32 | 2 1/4 | 6 11/16 | 7/8 | 2 9/16 |
| F32 | F432 | 1/2 | 2 | 1 5/16 | 5 | 1 9/32 | 2 | 7 | 1 | 2 7/8 |
| FH32 | FH432 | 1/2 | 2 | 1 5/16 | 5 5/8 | 1 9/32 | 2 5/8 | 7 3/8 | 1 | 2 7/8 |

Dimensions G 32 & 432 (Unmounted Pumps)



① Minimum dimension for repacking. Assembled dimension on seal pumps 3 1/16".

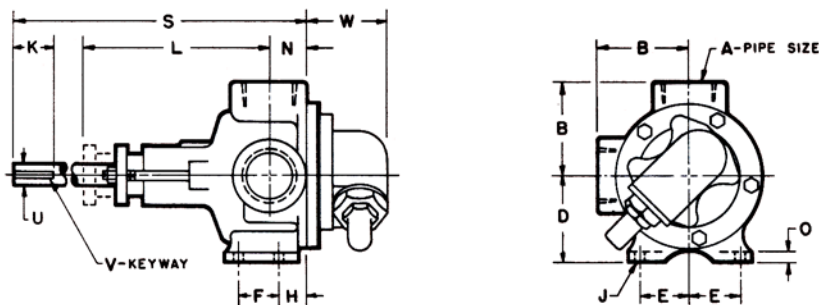
| MODEL NO. | |
|-----------|------|
| PACKED | SEAL |
| G32 | G432 |

VIKING GENERAL PURPOSE INTERNAL GEAR PUMPS

SERIES 32 & 432

| | |
|---------|-------|
| Section | 310 |
| Page | 310.5 |
| Issue | J |

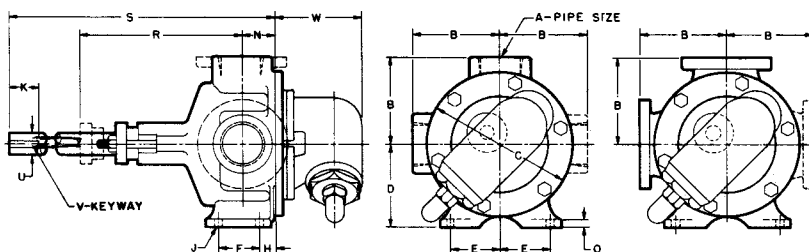
Dimensions H - HL 32 & 432 (Unmounted Pumps)



| MODEL NO. | | A | | B | D | E | F | H | J | K | ① L | N | O | S | U | V | W |
|-----------|-------|----|----|------|------|------|------|------|------|------|-------|------|------|-------|------|-----------|------|
| PACKED | SEAL | | | | | | | | | | | | | | | | |
| H32 | H432 | 1 | in | 2.88 | 2.75 | 1.63 | 1.31 | 0.88 | 0.34 | 1.75 | 5.75 | 0.88 | 0.31 | 11.38 | 0.75 | .19 x .09 | 2.88 |
| | | | mm | 73.2 | 69.9 | 41.4 | 33.3 | 22.4 | 8.6 | 44.5 | 146.1 | 22.4 | 7.9 | 289.1 | 19.1 | 4.8 x 2.3 | 73.2 |
| HL32 | HL432 | 1½ | in | 3.00 | 2.75 | 1.63 | 1.31 | 0.88 | 0.34 | 1.75 | 6.00 | 1.19 | 0.31 | 11.38 | 0.75 | .19 x .09 | 2.88 |
| | | | mm | 76.2 | 69.9 | 41.4 | 33.3 | 22.4 | 8.6 | 44.5 | 152.4 | 30.2 | 7.9 | 289.1 | 19.1 | 4.8 x 2.3 | 73.2 |

① Minimum dimension for repacking. Assembled dimension on seal pumps: 3⅞" for Model H432, 4½" for Model HL432.

Dimensions K - KK - L - LQ 32 (Unmounted Pumps)



| MODEL NO. | A | B | C | D | E | F | H | J | K | N | O | ② R | S | U | V | W |
|-----------|-----|----|-----|----|----|----|---|----|---|----|---|-----|-----|----|-------|----|
| K32 | 1½ | 4⅞ | 8 | 4⅞ | 2⅞ | 2¼ | ⅞ | 1⅜ | 3 | 1¼ | ⅞ | 7⅞ | 18¼ | 1⅞ | ¼ x ⅞ | 5⅞ |
| KK32 | 2 | 4⅞ | 8 | 4⅞ | 2⅞ | 2¼ | ⅞ | 1⅜ | 3 | 1¼ | ⅞ | 7⅞ | 18¼ | 1⅞ | ¼ x ⅞ | 5⅞ |
| L32 | 2 | 6½ | 10¼ | 6 | 2⅞ | 3 | 1 | 1⅜ | 3 | 1¼ | ½ | 9⅞ | 21¼ | 1⅞ | ⅜ x ⅜ | 5⅞ |
| LQ32 | ①2½ | 7⅞ | 10¼ | 6 | 2⅞ | 3 | 1 | 1⅜ | 3 | 1¼ | ½ | 9⅞ | 21¼ | 1⅞ | ⅜ x ⅜ | 5⅞ |

① Ports are suitable for use with 125# ANSI cast iron or 150# ANSI steel companion flanges or flanged fittings. All others tapped for standard pipe.

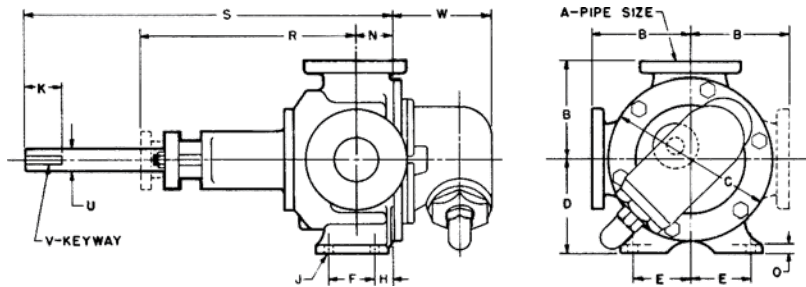
② Minimum dimension for repacking.

| | |
|---------|-------|
| Section | 310 |
| Page | 310.6 |
| Issue | J |

VIKING GENERAL PURPOSE INTERNAL GEAR PUMPS

SERIES 32 & 432

Dimensions LL - Q - M - N 32 (Unmounted Pumps)

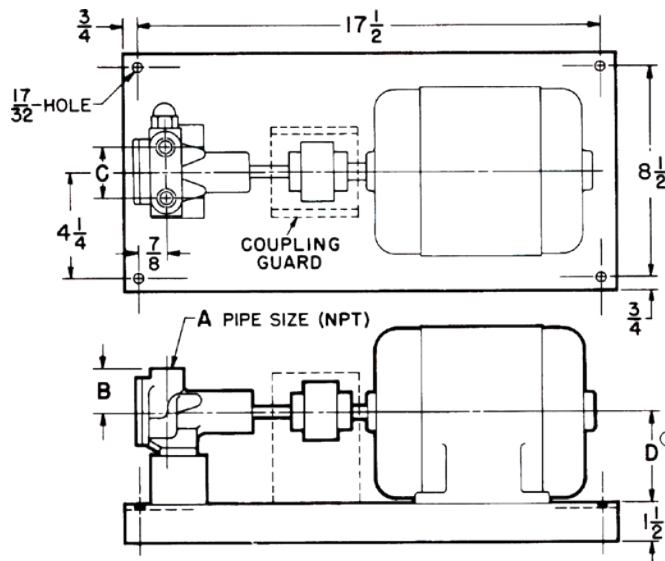


| MODEL NO. | ① A | B | C | D | E | F | H | J | K | N | O | ② R | S | U | V | W |
|-----------|--------|--------------------------------|--------------------------------|-------------------------------|-------------------------------|-------------------------------|--------------------------------|--------------------------------|---|-------------------------------|-----|--------------------------------|--------------------------------|---------------------------------|------------|--------------------------------|
| LL32 | 3 | 7 ¹ / ₁₆ | 10 ¹ / ₄ | 6 | 2 ¹ / ₈ | 3 | 1 ¹ / ₂ | 1 ⁵ / ₃₂ | 3 | 2 ¹ / ₄ | 1/2 | 12 ¹ / ₈ | 21 ¹ / ₄ | 1 ¹ / ₁₆ | 3/8 X 3/16 | 5 ³ / ₈ |
| Q32 | 3 | 7 ¹ / ₄ | 14 | 7 ¹ / ₄ | 4 ¹ / ₈ | 4 ¹ / ₄ | 1 ⁵ / ₈ | 1 ¹ / ₁₆ | 5 | 3 | 5/8 | 13 ³ / ₈ | 33 ¹ / ₂ | 1 ¹⁵ / ₁₆ | 1/2 X 1/4 | 8 ⁷ / ₁₆ |
| M32 | 4 | 9 ¹ / ₂ | 17 ¹ / ₄ | 9 ¹ / ₂ | 5 | 6 ¹ / ₄ | 1 ¹ / ₁₆ | 1 ¹ / ₁₆ | 5 | 4 | 3/4 | 13 ³ / ₈ | 34 | 1 ¹⁵ / ₁₆ | 1/2 X 1/4 | 8 ¹ / ₂ |
| N32 | 5 | 9 ¹ / ₂ | 17 ¹ / ₄ | 9 ¹ / ₂ | 5 | 6 ¹ / ₄ | 1 ⁵ / ₈ | 1 ¹ / ₁₆ | 5 | 4 ¹ / ₂ | 1 | 20 ⁷ / ₈ | 34 | 2 ¹ / ₁₆ | 5/8 X 5/16 | 8 ¹ / ₂ |

① Ports are suitable for use with 125# ANSI cast iron or 150# ANSI steel companion flanges or flanged fittings.

② Minimum dimension for repacking.

Dimensions C - F - FH 32 & 432 (D DRIVE)



| MODEL NO. | | A | B | C | Approximate Shipping Weight With Valve (Less Power) | |
|-----------|--------|-----|--------------------------------|-------------------------------|---|------|
| PACKED | SEAL | | | | Pounds | KG |
| C32D | C432D | 1/4 | 1 ¹ / ₁₆ | 1 ¹ / ₂ | 26 | 11.8 |
| F32D | F432D | 1/2 | 2 | 1 ¹ / ₈ | 27 | 12.3 |
| FH32D | FH432D | 1/2 | 2 | 1 ¹ / ₈ | 29 | 13.2 |

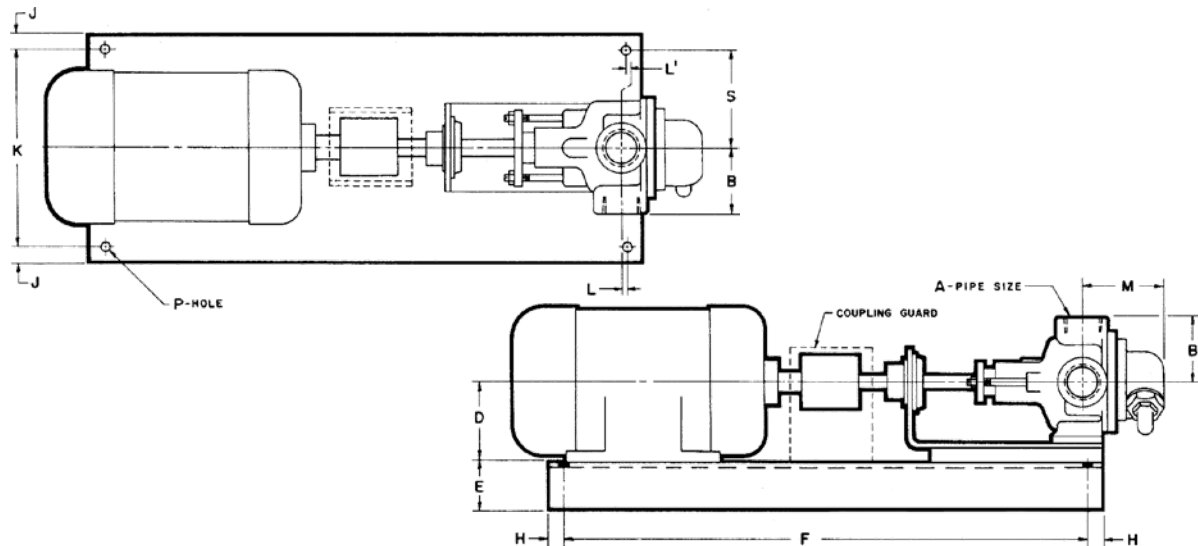
① Centerheight is 3" with 48 frame motor. Centerheight is 3¹/₂" with 56 frame motor.

VIKING GENERAL PURPOSE INTERNAL GEAR PUMPS

SERIES 32 & 432

| | |
|---------|-------|
| Section | 310 |
| Page | 310.7 |
| Issue | J |

Dimensions G - H - HL 32 & 432 (D DRIVE)



| MODEL NO. | | A | B | D | E | F | H | J | K | L | L ₁ | M | P | S | Approximate Shipping Weight With Valve (Less Power) | |
|-----------|--------|----|----|-----|----|-----|---|----|----|----|----------------|----|---|----|---|------|
| PACKED | SEAL | | | | | | | | | | | | | | Pounds | KG |
| ①G32D | ①G432D | 1 | 2½ | ②3½ | 1½ | 20½ | ¾ | ¾ | 8½ | | ⅝ | 3¾ | ½ | 4¼ | 45 | 20.4 |
| H32D | H432D | 1 | 2⅞ | ②3½ | 1½ | 20½ | ¾ | ¾ | 8½ | | ⅛ | 3¾ | ½ | 4¼ | 70 | 31.8 |
| HL32D | HL432D | 1½ | 3 | ②3½ | 1½ | 20½ | ¾ | ¾ | 8½ | ⅜ | | 4⅞ | ½ | 4¼ | 75 | 34.1 |
| ①G32D | ①G432D | 1 | 2½ | ③4½ | 2⅞ | 25 | 1 | 1½ | 9 | 1 | | 3¾ | ⅞ | 4½ | 45 | 20.4 |
| H32D | H432D | 1 | 2⅞ | ③4½ | 2⅞ | 25 | 1 | 1½ | 9 | 1⅞ | | 3¾ | ⅞ | 4½ | 70 | 31.8 |
| HL32D | HL432D | 1 | 3 | ③4½ | 2⅞ | 25 | 1 | 1½ | 9 | 1⅞ | | 4⅞ | ⅞ | 4½ | 75 | 34.1 |

① All "G" pumps are equipped with opposite ports with openings ⅝" above shaft center line. See drawing page 310.9.

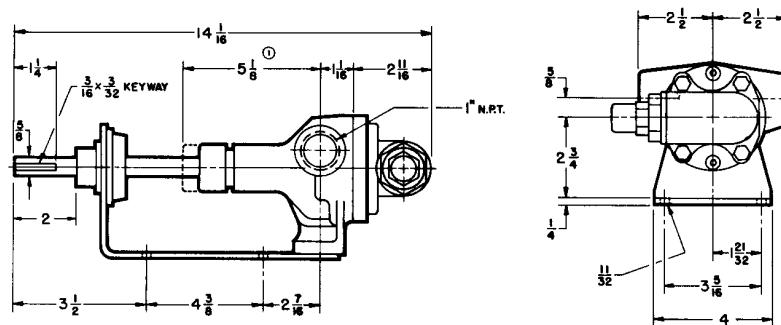
② For motor frames 56, 143T and 145T.

③ For motor frames 182, 182T, 184 and 184T.

Frame 48 (3" center line), smaller base required.

Frame 213 on up, larger base required.

Dimensions G 32 & 432 (B DRIVE)



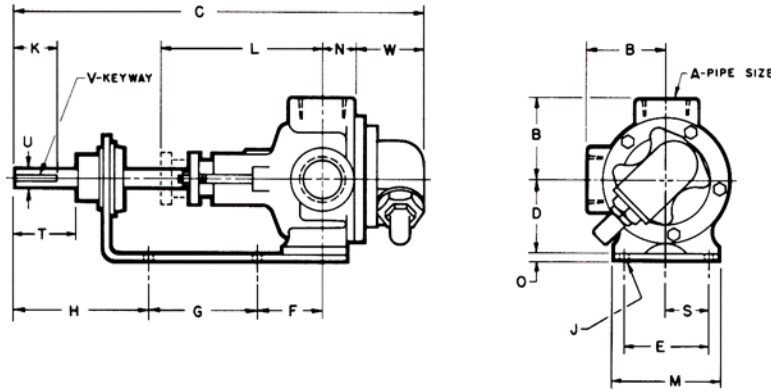
| MODEL NO. | | Approximate Shipping Weight With Valve (Less Power) | |
|-----------|-------|---|-----|
| PACKED | SEAL | Pounds | KG |
| G32B | G432B | 18 | 8.2 |

① Minimum dimension for repacking. Assembled dimension for seal pump 3⅞.

| | |
|---------|-------|
| Section | 310 |
| Page | 310.8 |
| Issue | J |

**VIKING GENERAL PURPOSE
INTERNAL GEAR PUMPS**
SERIES 32 & 432

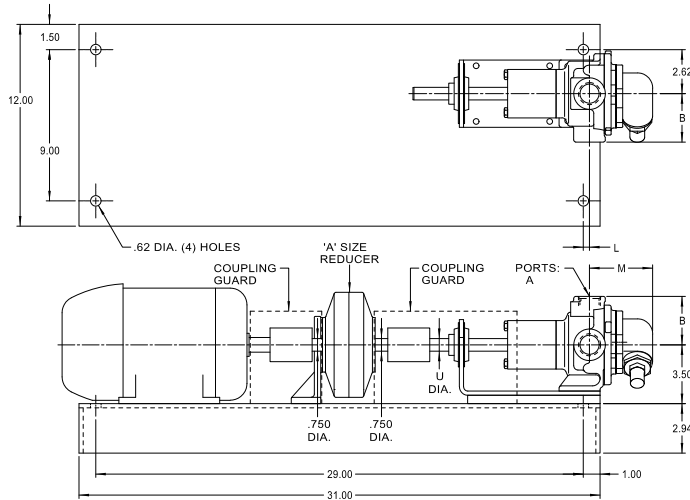
Dimensions H - HL 32 & 432 (B DRIVE)



| MODEL NO. | | A | B | C | D | E | F | G | H | J | K | L | M | N | O | S | T | U | V | W | Approximate Shipping Weight With Valve (Less Power) | |
|-----------|--------|-------------------------------|-------------------------------|--------------------------------|-------------------------------|---------------------------------|-------------------------------|-------------------------------|-------------------------------|--------------------------------|-------------------------------|-------------------------------|---|--------------------------------|-------------------------------|---------------------------------|--------------------------------|-------------------------------|---|-------------------------------|---|------|
| PACKED | SEAL | | | | | | | | | | | | | | | | | | | | Pounds | KG |
| H32B | H432B | 1 | 2 ⁷ / ₈ | 14 ¹ / ₄ | 2 ³ / ₄ | 3 ¹⁵ / ₁₆ | 2 ³ / ₄ | 4 ³ / ₈ | 3 ³ / ₄ | 1 ¹ / ₃₂ | 1 ¹ / ₄ | 5 ³ / ₄ | 4 | 7 ⁸ / ₁₆ | 1 ⁴ / ₄ | 1 ²¹ / ₃₂ | 2 ³ / ₁₆ | 3 ⁴ / ₄ | 3 ¹ / ₁₆ X 3 ³ / ₃₂ | 2 ⁷ / ₈ | 23 | 10.4 |
| HL32B | HL432B | 1 ¹ / ₂ | 3 | 14 | 2 ³ / ₄ | 3 ¹⁵ / ₁₆ | 2 ³ / ₄ | 4 ³ / ₈ | 3 ¹ / ₂ | 1 ¹ / ₃₂ | 1 ¹ / ₄ | 6 | 4 | 1 ¹ / ₁₆ | 1 ⁴ / ₄ | 1 ²¹ / ₃₂ | 2 | 3 ⁴ / ₄ | 3 ¹ / ₁₆ X 3 ³ / ₃₂ | 2 ⁷ / ₈ | 28 | 12.7 |

① Minimum dimension for repacking. Assembled dimension on seal pumps: 3⁷/₈" – for Model H432B, 4¹/₂" – for Model HL432B.

Dimensions G - H - HL 32 & 432 (R DRIVE, A REDUCER)



| MODEL NO. | | A | B | L | M | U | Approximate Shipping Weight With Valve (Less Power) | |
|-----------|---------|-------------------------------|-------------------------------|--------------------------------|--------------------------------|--------------------------------|---|----|
| PACKED | SEAL | | | | | | Pounds | KG |
| ① G32R | ① G432R | 1 | 2 ¹ / ₂ | 5 ⁸ / ₁₆ | 3 ³ / ₄ | 5 ⁸ / ₁₆ | 65 | 30 |
| H32R | H432R | 1 | 2 ⁷ / ₈ | 9 ¹ / ₁₆ | 3 ³ / ₄ | 3 ⁴ / ₄ | 70 | 32 |
| HL32R | HL432R | 1 ¹ / ₂ | 3 | 1 ¹ / ₄ | 4 ¹ / ₁₆ | 3 ⁴ / ₄ | 75 | 34 |

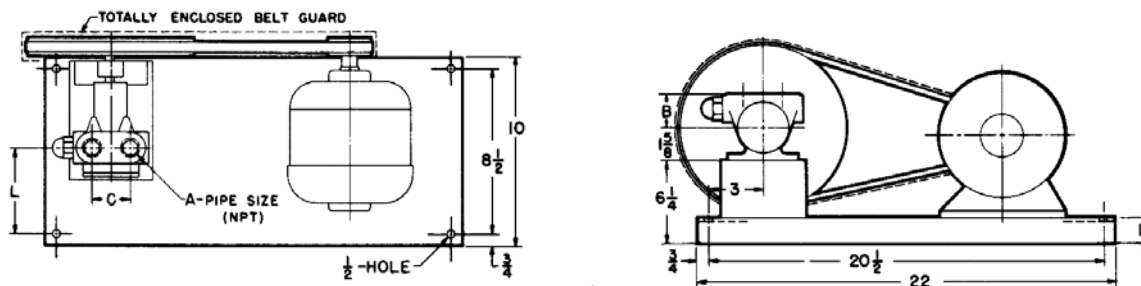
① All "G" pumps are equipped with opposite ports with openings 5⁸/₁₆" above shaft center line.

VIKING GENERAL PURPOSE INTERNAL GEAR PUMPS

SERIES 32 & 432

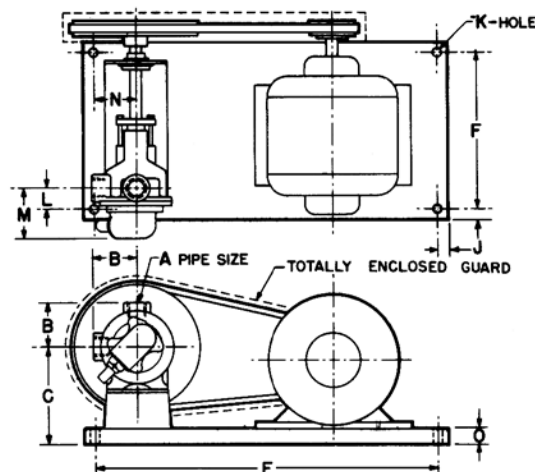
| | |
|---------|-------|
| Section | 310 |
| Page | 310.9 |
| Issue | J |

Dimensions C - F - FH 32 & 432 (V DRIVE)



| MODEL NO. | | A | B | C | L | Approximate Shipping Weight With Valve (Less Power) | |
|-----------|--------|-----|---------|-------|---------|---|----|
| PACKED | SEAL | | | | | Pounds | KG |
| C32V | C432V | 1/4 | 1 11/16 | 1 | 4 7/8 | 35 | 16 |
| F32V | F432V | 1/2 | 2 | 1 7/8 | 4 15/16 | 40 | 18 |
| FH32V | FH432V | 1/2 | 2 | 1 7/8 | 4 15/16 | 45 | 20 |

Dimensions G - H - HL 32 & 432 (V DRIVE)



| MODEL NO. | | A | B | C | E | F | J | K | L | M | N | O | Approximate Shipping Weight With Valve (Less Power) | |
|-----------|---------|-------|---------|-------|--------|--------|-----|-----|---------|--------|-------|-------|---|----|
| PACKED | SEAL | | | | | | | | | | | | Pounds | KG |
| ① G32V | ① G432V | 1 | ① 2 1/2 | 8 3/8 | 18 3/4 | 10 1/4 | 3/4 | 1/2 | 1 13/16 | 3 3/4 | 2 3/4 | 1 1/4 | 65 | 30 |
| H32V | H432V | 1 | 2 7/8 | 8 3/8 | 18 3/4 | 10 1/4 | 3/4 | 1/2 | 1 1/8 | 3 3/4 | 2 3/4 | 1 1/4 | 70 | 32 |
| HL32V | HL432V | 1 1/2 | 3 | 8 3/8 | 18 3/4 | 10 1/4 | 3/4 | 1/2 | 2 3/16 | 4 1/16 | 2 3/4 | 1 1/4 | 75 | 34 |

① All "G" pumps are equipped with opposite ports with openings 5/8" above shaft center line. See drawing page 310.9.

Base shown for motor frame 56 and smaller.

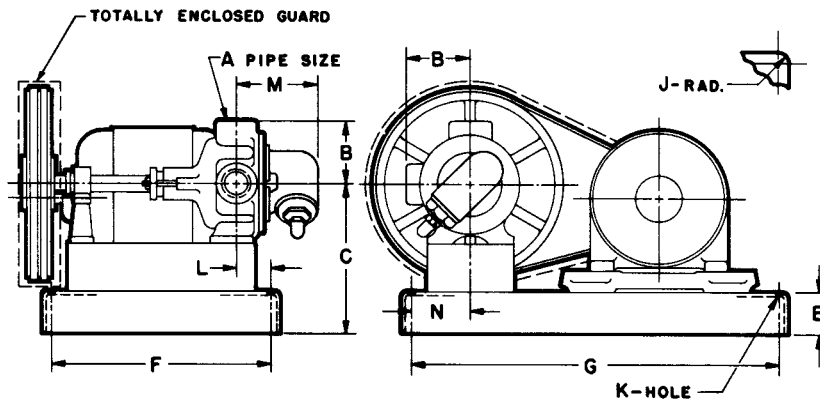
Larger Base always required with motor frames 143T, 145T, 182, 182T, 184, 184T.

| | |
|---------|--------|
| Section | 310 |
| Page | 310.10 |
| Issue | J |

VIKING GENERAL PURPOSE INTERNAL GEAR PUMPS

SERIES 32 & 432

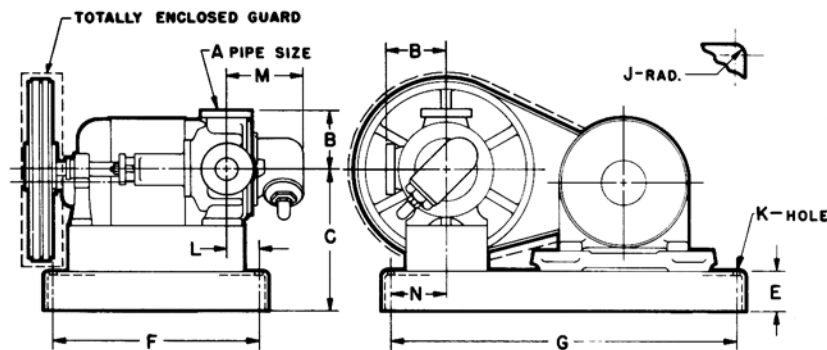
Dimensions K - KK - L - LQ 32 (V DRIVE)



| MODEL NO. | A | B | C | E | F | G | J | K | L | M | N | Approximate Shipping Weight With Valve (Less Power) | |
|-----------|------|----|-----|----|-----|-----|---|---|----|----|----|---|-----|
| | | | | | | | | | | | | Pounds | KG |
| K32V | 1½ | 4⅞ | 13⅞ | 3¼ | 17 | 28¾ | 1 | ½ | 2⅞ | 6⅞ | 4⅞ | 210 | 95 |
| KK32V | 2 | 4⅞ | 13⅞ | 3¼ | 17 | 28¾ | 1 | ½ | 2⅞ | 6⅞ | 4⅞ | 215 | 98 |
| L32V | 2 | 6½ | 15½ | 3½ | 18½ | 31 | 1 | ⅝ | 1⅞ | 7⅞ | 6½ | 280 | 127 |
| LQ32V | ① 2½ | 7⅞ | 15½ | 3½ | 18½ | 31 | 1 | ⅝ | 1⅞ | 7⅞ | 6½ | 290 | 132 |

① Ports are suitable for use with 125# ANSI cast iron or 150# ANSI steel companion flanges or flanged fittings. All others tapped for standard pipe.

Dimensions LL - Q - M - N 32 (V DRIVE)



| MODEL NO. | ① A | B | C | E | F | G | J | K | L | M | N | Approximate Shipping Weight With Valve (Less Power) | |
|-----------|-----|----|-------|----|-----|----|----|----|----|-----|----|---|-----|
| | | | | | | | | | | | | Pounds | KG |
| LL 32V | 3 | 7⅞ | 15½ | 3½ | 18½ | 31 | 1 | ⅝ | 1⅞ | 7⅞ | 6½ | 315 | 143 |
| Q32V | 3 | 7¾ | ② 13¾ | 6 | 27 | 49 | 1½ | 1⅞ | 2⅞ | 11⅞ | 8½ | 750 | 341 |
| M32V | 4 | 9½ | ③ 15½ | 6 | 27 | 49 | 1½ | 1⅞ | 3⅞ | 12½ | 8½ | 1100 | 500 |
| N32V | 5 | 9½ | 20½ | 6 | 27 | 49 | 1½ | 1⅞ | 3⅞ | 13 | 9½ | 1300 | 590 |

① Ports are suitable for use with 125# ANSI cast iron or 150# ANSI steel companion flanges or flanged fittings.

② Dimension "C" (13¾) shown is for 19" or 25" O.D. sheave (lesser reductions). Dimension "C" is 20¼" when 33.5" O.D. sheave is used (maximum reduction).

③ Dimension "C" (15½) shown is for 19" or 25" O.D. sheave (lesser reductions). Dimension "C" is 22" when 33.5" O.D. sheave is used (maximum reduction)

VIKING GENERAL PURPOSE INTERNAL GEAR PUMPS

SERIES 32 & 432

| | |
|---------|--------|
| Section | 310 |
| Page | 310.11 |
| Issue | J |

Performance Curve Notes

Printed performance curves are not available.

Performance curves can be electronically generated with the Viking Pump Selector Program. This program can be located on www.vikingpump.com.

NPSH_R data is not available on the pump selector.

NPSH_R - FEED OF LIQUID (SP. GR. 1.0), Viscosities to 750 SSU

NPSH_A (Net Positive Suction Head Available) must be greater than the NPSH_R (Net Positive Suction Head Required) given in the above table.

VISCOSITY - Above chart applies to viscosities up thru 750 SSU. Consult factory or Viking representative for viscosities above 750 SSU.

For liquids other than water, divide by specific gravity.

| PUMP SIZE | PUMPS SPEED, RPM | | | | | | | | | | | | | | |
|-----------|------------------|-----|-----|-----|-----|-----|------|------|------|------|------|------|------|------|------|
| | 100 | 125 | 155 | 190 | 230 | 280 | 350 | 420 | 520 | 640 | 780 | 950 | 1150 | 1450 | 1750 |
| C | - | - | - | - | - | - | - | - | - | - | - | 1.7 | 1.9 | 2.2 | 2.4 |
| F, FH | - | - | - | - | - | - | - | - | - | 1.8 | 1.9 | 2.1 | 2.3 | 2.8 | 3.4 |
| G | - | - | - | - | - | - | - | 1.8 | 2.0 | 2.2 | 2.6 | 3.1 | 3.9 | 5.6 | 7.6 |
| H, HL | - | - | - | - | 1.7 | 1.8 | 1.9 | 2.1 | 2.4 | 2.8 | 3.4 | 4.5 | 6.2 | 9.5 | 13.5 |
| K, KK | - | 1.7 | 1.8 | 1.9 | 2.1 | 2.3 | 2.8 | 3.3 | 4.4 | 6.3 | 9.1 | 24.4 | - | - | - |
| L, LQ, LL | 1.7 | 1.8 | 2.0 | 2.2 | 2.5 | 3.0 | 3.8 | 5.0 | 7.3 | 10.8 | 17.7 | 32.0 | - | - | - |
| Q | 1.9 | 2.1 | 2.3 | 2.7 | 3.3 | 4.2 | 6.1 | 8.4 | 12.7 | - | - | - | - | - | - |
| M | 2.1 | 2.3 | 2.8 | 3.4 | 4.3 | 6.0 | 9.0 | 12.7 | - | - | - | - | - | - | - |
| N | 2.1 | 2.5 | 3.5 | 4.5 | 6.3 | 9.5 | 15.0 | 29.5 | - | - | - | - | - | - | - |

Catalog Speed Rating*

* Limit for most models.
Some models exceed this limit.
See Viking Pump catalog for details.