

Series: STEP-SS

Submersible Effluent Pumps

.5 & 1HP, 3450RPM

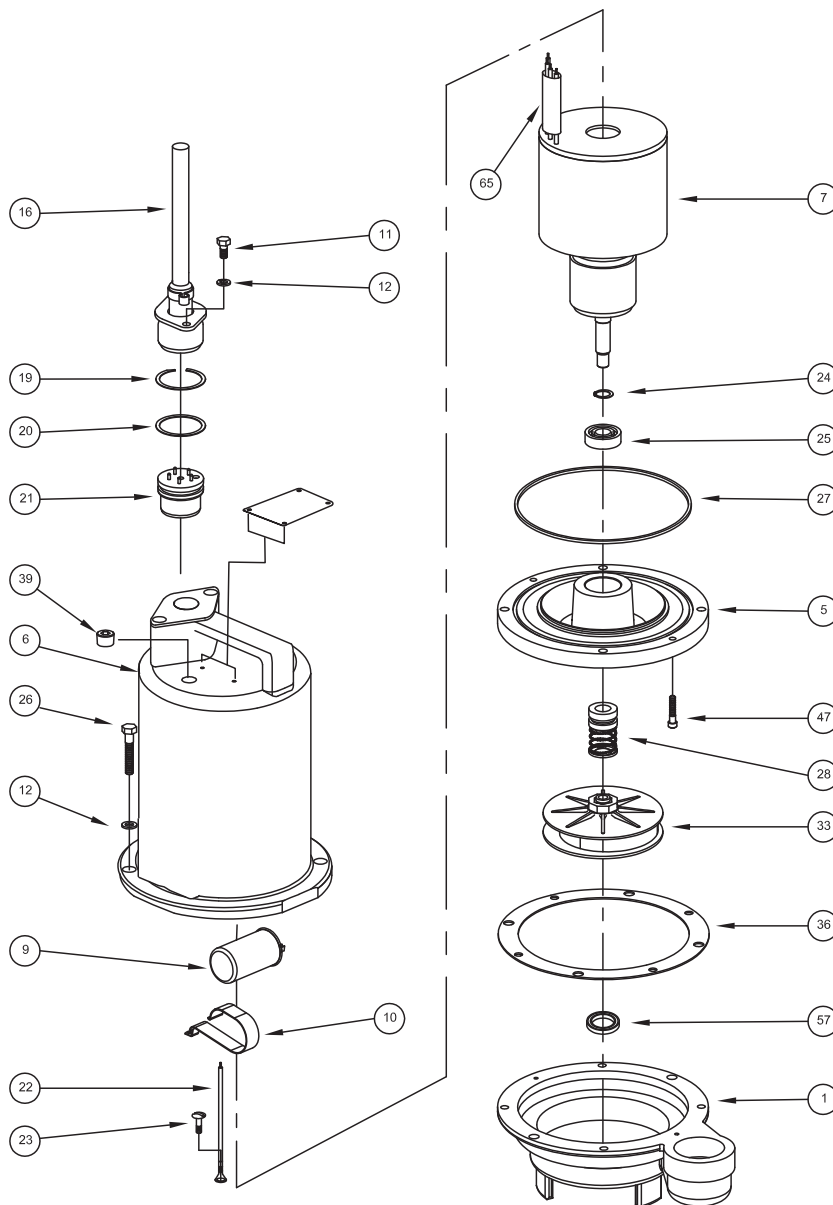
BARNES®

www.cranepumps.com

BARNES • PROSSER • CROWN SERVICE PARTS

MODEL	PART NO.		
STEP512SS	105045		
STEP512SSA	105045A		
STEP522SS	105046		
STEP592SS	105047		
STEP542SS	105048		
STEP552SS	105049		
STEP1022SS	105054		
STEP1022SSA	105054B		
STEP1092SS	105055		
STEP1042SS	105056		
STEP1052SS	105057		

Manual: 105243



Continued →

SECTION 3A
PAGE 36
DATE 12/16

CRANE
A Crane Co. Company

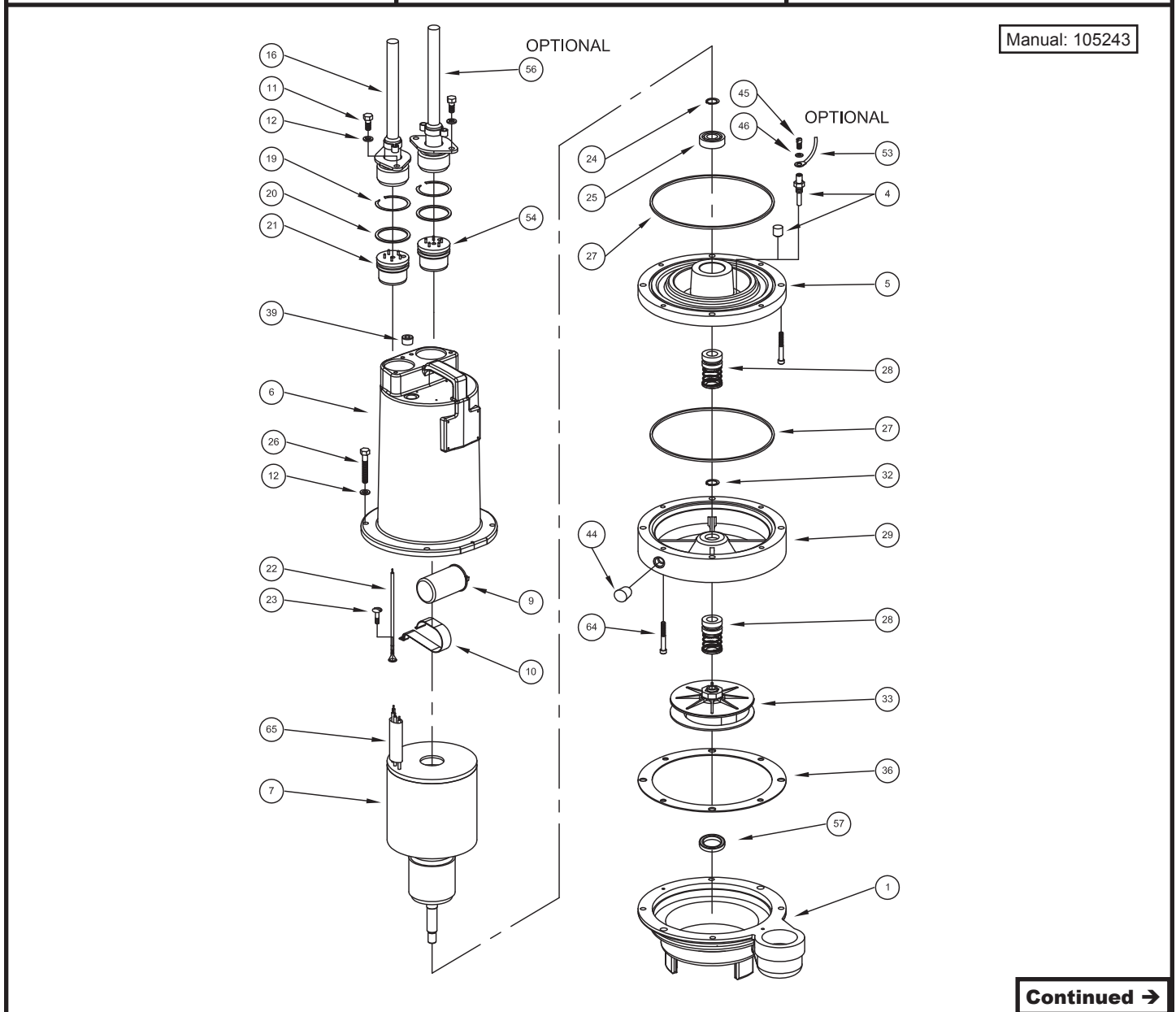
PUMPS & SYSTEMS

A Crane Co. Company

USA: (937) 778-8947 • Canada: (905) 457-6223 • International: (937) 615-3598

BARNES • PROSSER • CROWN SERVICE PARTS

MODEL	PART NO.
STEP512DS	105040
STEP522DS	105041
STEP592DS	105042
STEP542DS	105043
STEP552DS	105044
STEP1022DS	105050
STEP1092DS	105051
STEP1042DS	105052
STEP1052DS	105053



Continued →

Series: STEP-SS & DS

Submersible Effluent Pumps

.5 & 1HP, 3450RPM



www.cranepumps.com

BARNES • PROSSER • CROWN SERVICE PARTS

PARTS KITS

Seal Repair Kits:

Single Seal P/N - 130180 (+) 20, 27, 28, 36, 57

Double Seal P/N - 130176 (†) 20, 27, 28, 32, 36, 57

Service Kits:

Single Seal P/N - 130207 (◇) 19, 20, 22, 24, 25, 27, 28, 36, 49, 57, 65

Double Seal P/N - 130172 (◆) 19, 20, 22, 24, 25, 27, 28, 32, 36, 44, 49, 57, 65

Seal Tool Kit P/N - 107271

Pressure Gauge Kit P/N - 085343

PARTS LIST

ITEM	QTY.	PART NO.	DESCRIPTION	
1	1	103763	Volute	
4	2	003217	Pipe Plug	All double seal (Std), .25" NPT, ZP
	2	039383	Moisture Sensor Probes	(Optional) for moisture sensor
5	1	084532	Seal Plate	All single seal
		084906	All double seal	
6	1	108342A	Motor Housing	(Std)
		110328B		(Optional) for moisture and temp. sensors
7	1		Motor:	
		068926BS	STEP512SS	
		068926BD	STEP512DS	
		068927BS	STEP522SS	
		068927BD	STEP522DS	
		068928BS	STEP1022SS	
		068928BD	STEP1022DS	
		071355BS	STEP532SS, STEP542SS, STEP1032SS, STEP1042SS	
		071355BD	STEP532DS, STEP542DS, STEP1032DS, STEP1042DS	
		067463FBS	STEP552SS, STEP1052SS	
		067463FBD	STEP552DS, STEP1052DS	
8	1	070965	Capacitor	1 Phase
9	96oz	029034	Oil	All single seal
	120oz	029034	Oil	All double seal (Includes 24 oz. in Seal Chamber)
10	1	039858	Capacitor Bracket	1 Phase
11	2	1-156-1	Hex. Hd. Cap Screw	(Std), 5/16-18 x 1.00" Lg., Stainless
	6	1-156-1	Hex. Hd. Cap Screw	(Optional) for moisture and temp. sensors
12	6	026322	Lockwasher	(Std), 5/16, Stainless
	10	026322	Lockwasher	(Optional) for moisture and temp. sensors
16	1	See Table 2	Power Cable Set	
19	1	105197	◇ Snap Ring	(Std)
	2	105197	◆ Snap Ring	(Optional) for moisture and temp. sensors
20	1	2-31051-224	+◇ O-ring	(Std)
	2	2-31051-224	†◆ O-ring	(Optional) for moisture and temp. sensors
21	1	103584	Terminal Block	1 Phase
	1	103583	Terminal Block	3 Phase
22	1	105111	◇◆ Ground Wire Assembly	(Std)
	2	105111	Ground Wire Assembly	(Optional) for moisture and temp. sensors
23	1	016660	Screw, Ground	#8-32 x .375" Lg.
24	1	085326	◇◆ Retaining Ring	(Included with motor)
25	1	017414	◇◆ Bearing	
26	4	1-135-1	Cap Screw	All single seal, 5/16-18 x 1.75" Lg., Stainless
		1-168-1	Cap Screw	All double seal, 5/16-18 x 3.50" Lg., Stainless
27	1	027269	+†◆ Square Ring	All single seal
	2	027269	†◆ Square Ring	All double seal
28	1		+†◆ Shaft Seal: (Qty 2 for DS)	
		005080	Carbon/Ceramic/Buna-N (Std)	
		005080SB	Tungsten/Tungsten/Buna-N	
		005080SD	Silicon Carbide/Silicon Carbide/Buna-N	
		005080SF	Carbon/Ceramic/Viton	
		005080SH	Tungsten/Tungsten/Viton	

Continued →

SECTION 3A
PAGE 38
DATE 12/16



PUMPS & SYSTEMS

A Crane Co. Company

USA: (937) 778-8947 • Canada: (905) 457-6223 • International: (937) 615-3598

BARNES • PROSSER • CROWN SERVICE PARTS

ITEM	QTY.	PART NO.	DESCRIPTION
		005080SK	Silicon Carbide/Silicon Carbide/Viton
		005080SM	Silicon Carbide/Tungsten/Buna-N
		005080SN	Carbon/Ni-Resistant/Buna-N
		005080SP	Carbon/Ni-Resistant/Neoprene
		082850	Carbon/Ni-Resistant/Viton
29	1	103587	Seal Housing All double seal
32	1	2-27008-62 †◆	Retaining Ring All double seal
33	1		Impeller, Polypropylene
		103512	5.25 Dia. (STD for 1.0 HP)
		103512TA	5.13 Dia.
		103512TB	5.00 Dia.
		103512TC	4.88 Dia.
		103512TD	4.75 Dia.
		103512TE	4.63 Dia. (STD for .5 HP)
		103512TF	4.50 Dia.
		103512TG	4.38 Dia.
		103512TH	4.25 Dia.
		103512TJ	4.13 Dia.
		103512TK	4.00 Dia.
36	1	027344 †◆◆	Gasket
37	2	030337	Socket Head Cap Screw All double seal, 1/4-20 x 2.00" Lg., Stainless
39	1	014270	Pipe Plug .375" NPT, ZP
41	A/R	----	Loctite 242
42	A/R	----	Permatex 2C
44	1	003217 ◆	Pipe Plug All double seal, .25" NPT, ZP
45	2	5-32-6	Screw (Optional) for moisture sensor, #6-32 x .25" Lg., ZP
46	2	052563	Lockwasher (Optional) for moisture sensor, #6 Stl
47	2	084948	Socket Head Screw 1/4-20 x 1.25" Lg., Stainless
48	4	105150	Terminal Connector 200-240V, 3Ph
	3	625-00163	Terminal Connector 480V, 3PH
49	3	105149 ◆◆	Wire Assembly 200-240V, 3Ph
50	1	051621	Thermal Sensor (Optional) for temperature sensor, (Not Shown)
51	2	105155	Wire Assembly (Optional) for temperature sensor, (Not Shown)
52	2	625-00163	Terminal Connector (Optional) for temperature sensor, (Not Shown)
53	2	105106	Wire Assembly (Optional) for moisture sensor
54	1	103584	Terminal Block Temperature sensor options
		103585	Moisture and temp. sensor options
56	1	See Table 2	Control Cable (Optional) for moisture and/or temp. sensors
57	1	066908 †◆◆	U-Cup
64	2	030337	Socket Head Screw Double Seal Only, 1/4-20 x 2.00" Lg., Stainless
65	1	625-02117 ◆◆	Sleeve, Fiberglass
67	1	125151-20	Float Switch (For STEP512SSA Only - Not Shown)
68	A/R	----	Loctite 603
69	1	111909	Jumper Wire

TABLE 2 - POWER & SENSOR CORD SETS

CABLE LENGTH	ITEM #16 120 VOLT 1 PHASE	ITEM #16 240 VOLT 1 PHASE	ITEM #16 3 PHASE	ITEM #56 (OPTIONAL) Temperature 3 Phase	ITEM #56 (OPTIONAL) Moisture and Temperature Sensor 3 Phase or Moisture Sensor
8 FT	103756A	----	103742A	103741A	103740A
15 FT	103756	110949	103742	103741	103740
20 FT (Std)	103756XA	110949XA	103742XA	103741XA	103740XA
30 FT	103756XC	110949XC	103742XC	103741XC	103740XC
50 FT	103756XF	110949XF	103742XF	103741XF	103740XF
75 FT	103756XJ	110949XJ	103742XJ	103741XJ	103740XJ
100 FT	103756XL	110949XL	103742XL	103741XL	103740XL

END