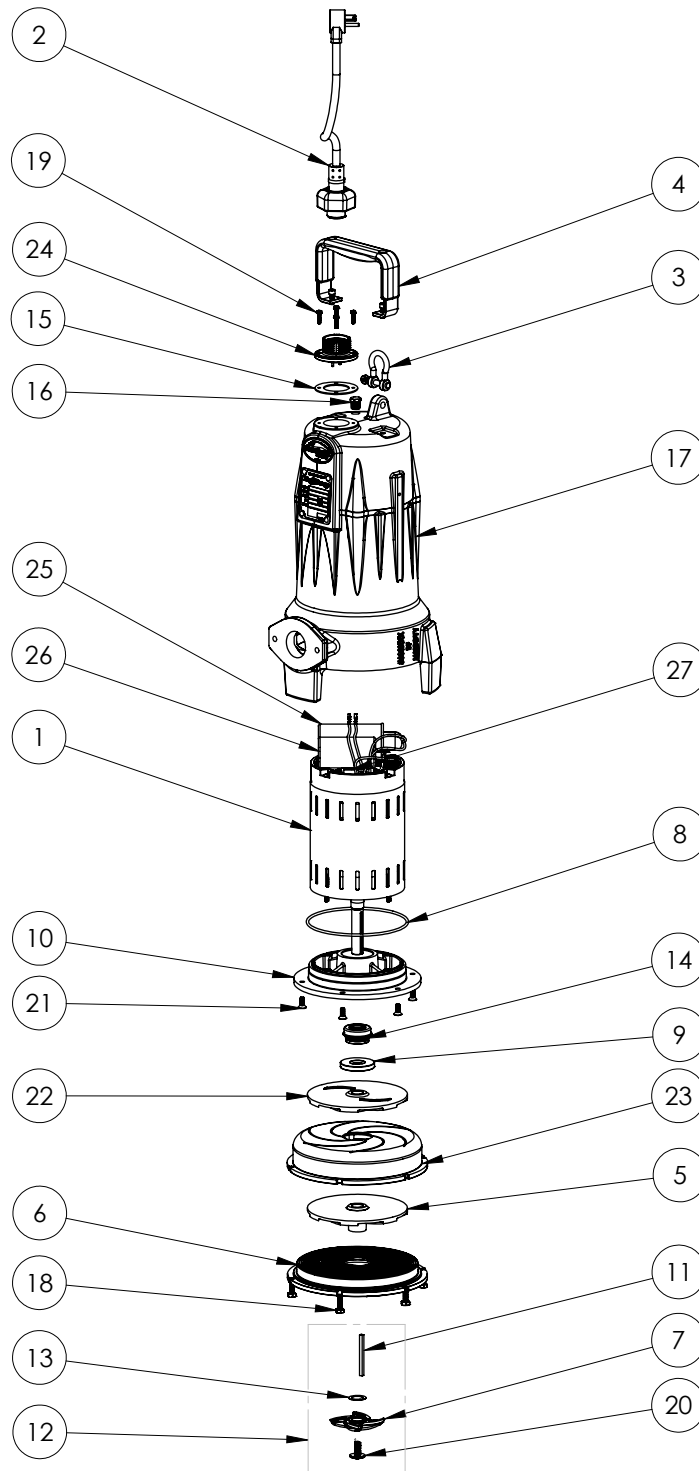


LSGX202M (B43)



**LSGX202M**

**LSGX202M (B43)**

| <b>#</b> | <b>PART #</b> | <b>DESCRIPTION</b>                  | <b>QTY</b> | <b>Note</b> |
|----------|---------------|-------------------------------------|------------|-------------|
| 1        | 5734000       | MOTOR 230V 1PH                      | 1          | [1]         |
| 2        | K001140       | POWER CORD                          | 1          |             |
| 3        | 5611000       | SHACKLE                             | 1          |             |
| 4        | 5613000       | HANDLE                              | 1          |             |
| 5        | 46600B0       | BOTTOM IMPELLER, STAINLESS STEEL    | 1          |             |
| 6        | K001395       | CUTTER PLATE                        | 1          |             |
| 7        | 5616900       | ROTARY CUTTER                       | 1          |             |
| 8        | 5617000       | O-RING                              | 1          |             |
| 9        | 5618000       | DOUBLE LIP SEAL                     | 1          | [1]         |
| 10       | 5851000       | MOTOR PLATE                         | 1          |             |
| 11       | 56350B0       | KEY                                 | 1          |             |
| 12       | K001139       | ROTARY CUTTER KIT                   | 1          | [2]         |
| 13       | K001445       | ROTARY CUTTER SHIM KIT              | 1          |             |
| 14       | 5633000       | 3/4" UNITIZED SHAFT SEAL            | 1          | [1]         |
| 15       | 5060000       | CORD PLATE GASKET                   | 1          |             |
| 16       | 50710A0       | PIPE PLUG, 1/4" HEX HD BRASS NPTF   | 1          |             |
| 17       | 573300R       | OMNIVORE HOUSING, 2 STAGE           | 1          |             |
| 18       | 8024000       | 1/4-20x7/8" HEX HEAD SS BOLT        | 6          |             |
| 19       | 8064000       | #8-32 x 5/8 HEX WASHER HEAD SCREW   | 4          |             |
| 20       | 56360A0       | FLANGED IMPELLER BOLT               | 1          |             |
| 21       | 8018000       | 1/4-20 x 5/8 SLOTTED FLAT HEAD BOLT | 6          |             |
| 22       | 46600A0       | TOP IMPELLER                        | 1          |             |
| 23       | 5380000       | CROSSOVER                           | 1          |             |
| 24       | K001216       | 5619000, CORDPLATE                  | 1          |             |
| 25       | K001228       | RUN CAPACITOR                       | 1          |             |
| 26       | K001227       | START CAPACITOR                     | 1          |             |
| 27       | K001229       | START SWITCH                        | 1          |             |

**PART NOTES:**

- [1] - Part requires factory authorized service. Contact Liberty Pumps at 1-800-543-2550
- [2] - ForLSG GrinderCutter Replacment Instructions see LSG Grinder Cutter Replacement