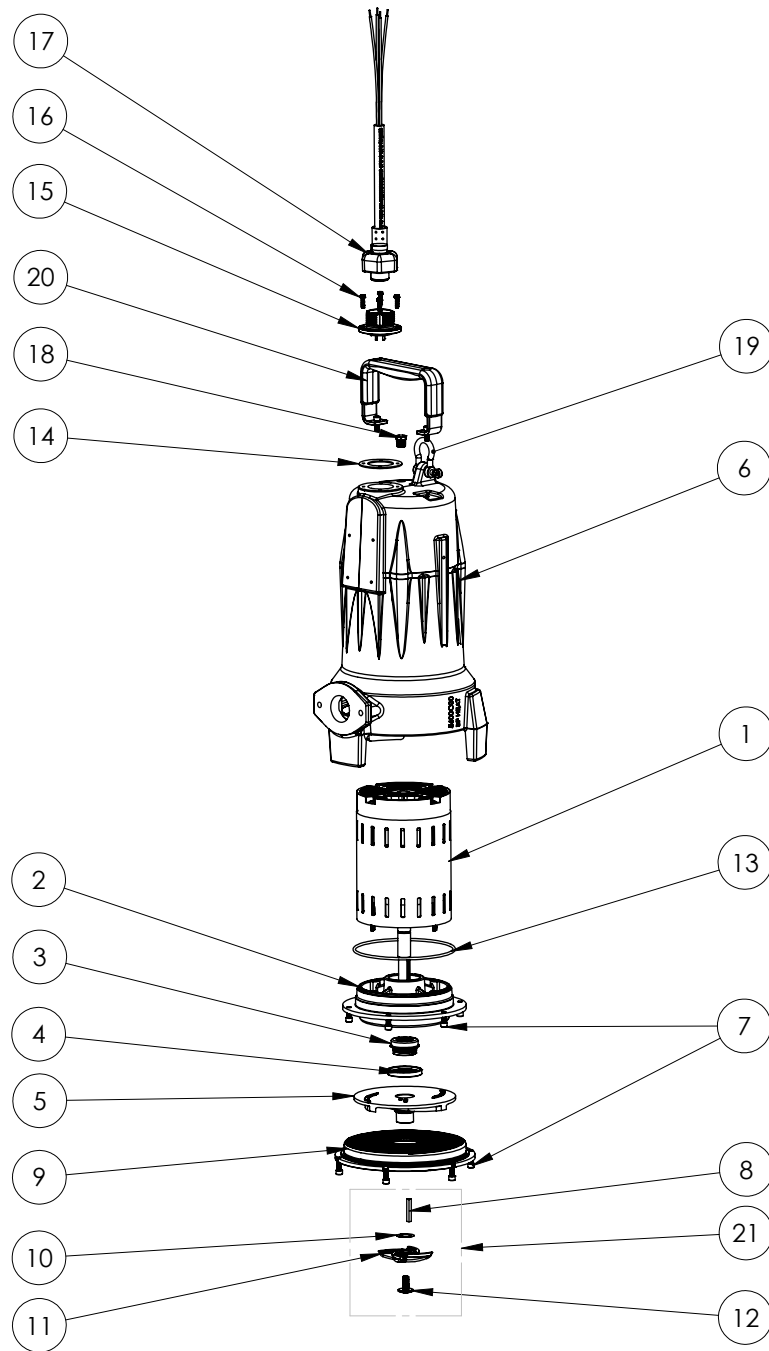


LSG204M (B48)



**LSG204M****LSG204M (B48)**

| #  | PART #  | DESCRIPTION                       | QTY | Note |
|----|---------|-----------------------------------|-----|------|
| 1  | 5628000 | MOTOR                             | 1   | [1]  |
| 2  | 5632000 | MOTOR PLATE                       | 1   | [1]  |
| 3  | 5633000 | 3/4" UNITIZED SHAFT SEAL          | 1   | [1]  |
| 4  | 5618000 | DOUBLE LIP SEAL                   | 1   | [1]  |
| 5  | K001538 | GRINDER IMPELLER KIT              | 1   |      |
| 6  | 560000R | OMNIVORE HOUSING                  | 1   |      |
| 7  | 8103000 | SCREW 1/4-20x5/8" HX SKT SS       | 14  |      |
| 8  | 56350A0 | KEY                               | 1   |      |
| 9  | 5615000 | CUTTER PLATE                      | 1   |      |
| 10 | K001445 | ROTARY CUTTER SHIM KIT            | 1   |      |
| 11 | 5616900 | ROTARY CUTTER                     | 1   |      |
| 12 | 56360A0 | FLANGED IMPELLER BOLT             | 1   |      |
| 13 | 5617000 | O-RING                            | 1   |      |
| 14 | 5060000 | CORD PLATE GASKET                 | 1   |      |
| 15 | 5629000 | GRINDER CORDPLATE                 | 1   |      |
| 16 | 8064000 | #8-32 x 5/8 HEX WASHER HEAD SCREW | 4   |      |
| 17 | K001357 | POWER CORD, 25FT                  | 1   |      |
| 18 | 5071000 | BRASS OIL PLUG                    | 1   |      |
| 19 | 5611000 | SHACKLE                           | 1   |      |
| 20 | 5613000 | HANDLE                            | 1   |      |
| 21 | K001139 | ROTARY CUTTER KIT                 | 1   | [2]  |

**PART NOTES:**

- [1] - Part requires factory authorized service. Contact Liberty Pumps at 1-800-543-2550
- [2] - ForLSG GrinderCutter Replacment Instructions see LSG Grinder Cutter Replacement