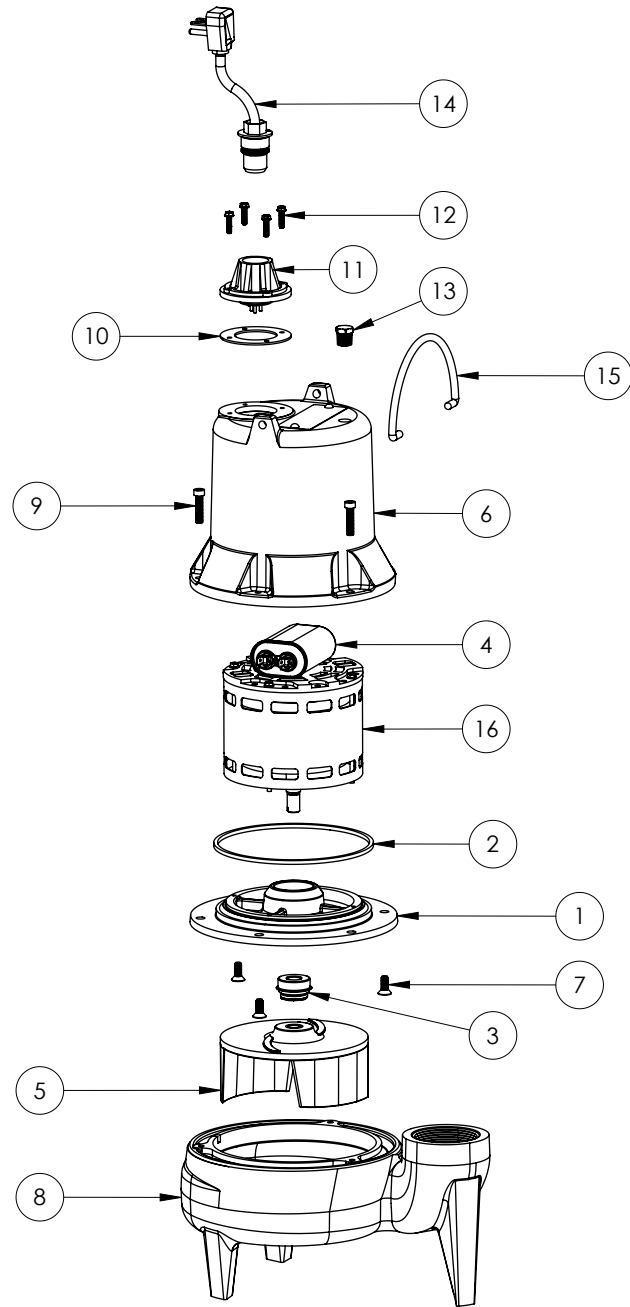


LE52M-2 (B42)



LE52M-2**LE52M-2 (B42)**

| # | PART # | DESCRIPTION | QTY | Note |
|----|---------|-------------------------------------|-----|------|
| 1 | 509200R | MOTOR SUPPORT PLATE | 1 | |
| 2 | 5066000 | SEALRING, MOTOR COVER, #254S | 1 | [1] |
| 3 | 50980A0 | 1/2 INCH UNITIZED SEAL | 1 | [1] |
| 4 | 51930E0 | CAPACITOR | 1 | |
| 5 | K001039 | IMPELLER | 1 | |
| 6 | 527800R | MOTOR CAP | 1 | |
| 7 | 8018000 | 1/4-20 x 5/8 SLOTTED FLAT HEAD BOLT | 3 | |
| 8 | 545100R | HOUSING, VOLUTE | 1 | |
| 9 | 8091000 | 1/4-20 x 1 HEX SOCKET HEAD BOLT | 3 | |
| 10 | 5060000 | CORD PLATE GASKET | 1 | |
| 11 | 5014000 | CORD PLATE | 1 | |
| 12 | 8064000 | #8-32 x 5/8 HEX WASHER HEAD SCREW | 4 | |
| 13 | 5071000 | BRASS OIL PLUG | 1 | |
| 14 | K001059 | POWER CORD, 230V, 25 FOOT CORD | 1 | |
| 15 | K001095 | STAINLESS STEEL HANDLE | 1 | |
| 16 | 51982A0 | MOTOR .5HP PSC 230V | 1 | [1] |

PART NOTES:

[1] - Part requires factory authorized service. Contact Liberty Pumps at 1-800-543-2550