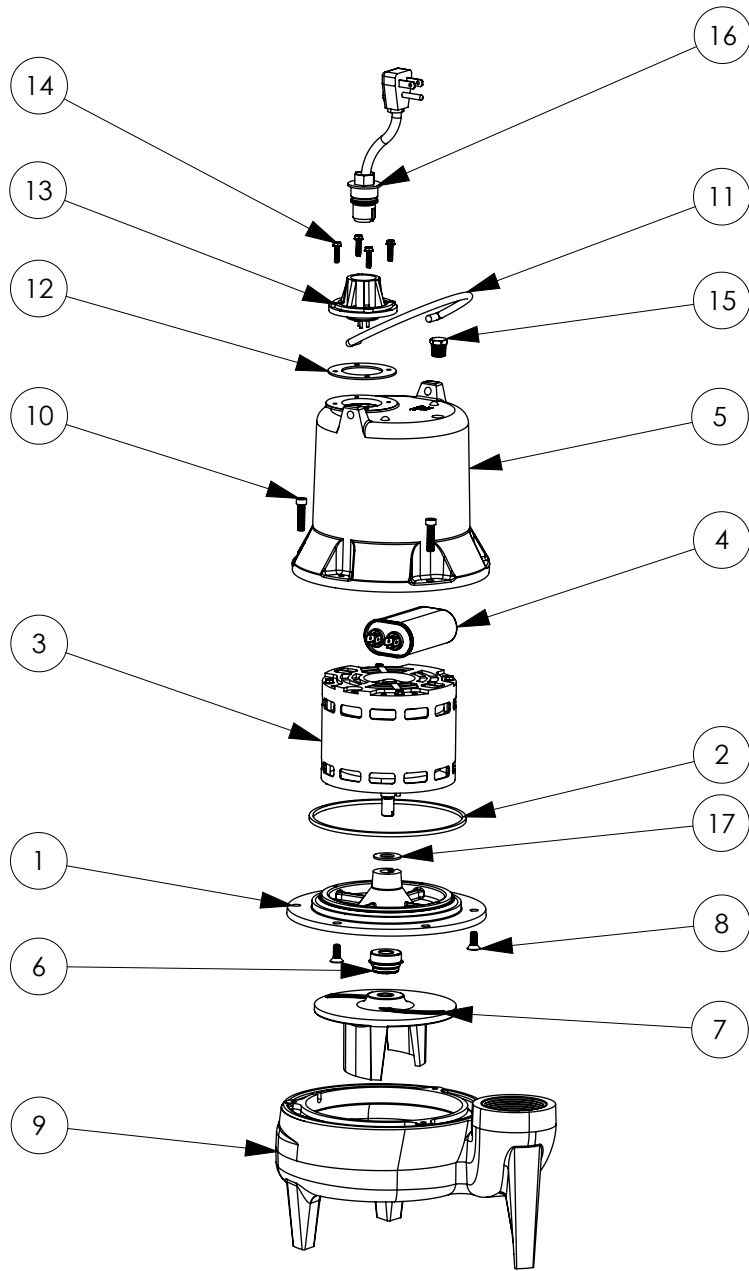


LE52LP (B10)



LE52LP**LE52LP (B10)**

#	PART #	DESCRIPTION	QTY	Note
1	505200R	MOTOR SUPPORT PLATE	1	
2	5066000	SEALRING, MOTOR COVER, #254S	1	[1]
3	5195000	MOTOR .5HP PSC 230V	1	
4	51930C0	CAPACITOR	1	
5	527800R	MOTOR CAP	1	
6	5098000	1/2 INCH UNITIZED SEAL	1	
7	K001039	IMPELLER	1	
8	8018000	1/4-20 x 5/8 SLOTTED FLAT HEAD BOLT	3	
9	54510AR	VOLUTE	1	
10	8091000	1/4-20 x 1 HEX SOCKET HEAD BOLT	3	
11	K001095	STAINLESS STEEL HANDLE	1	
12	5060000	CORD PLATE GASKET	1	
13	5014000	CORD PLATE	1	
14	8064000	#8-32 x 5/8 HEX WASHER HEAD SCREW	4	
15	5071000	BRASS OIL PLUG	1	
16	K001058	POWER CORD, 10FT. 230V	1	
17	5395000	THRUST WASHER	1	

PART NOTES:

[1] - Part requires factory authorized service. Contact Liberty Pumps at 1-800-543-2550