



Submittal Data Information

KS Series Vertical Split Coupled Pumps

301-1152

EFFECTIVE: MAY 31, 2017

SUPERSEDES: JUNE 25, 2016

1760 RPM MODEL 3006

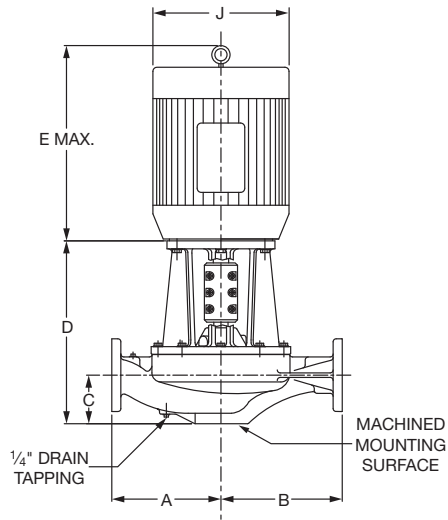
JOB _____ ENGINEER _____

CONTRACTOR _____ REP. _____

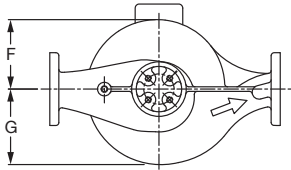
| ITEM NO. | MODEL NO. | IMPELLER DIA. | G.P.M. | HEAD/FT. | H.P. | ELEC. CHAR. |
|----------|-----------|---------------|--------|----------|------|-------------|
|----------|-----------|---------------|--------|----------|------|-------------|

NSF 61 Certified
 Yes No

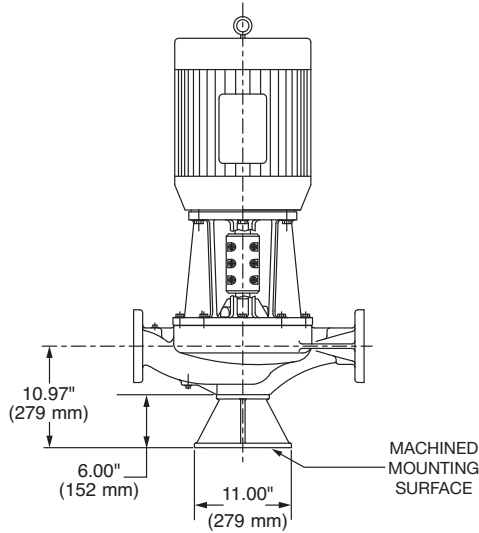
WEIGHT _____ PUMP/MOTOR _____



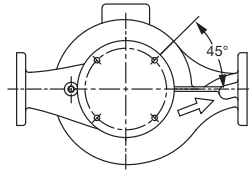
FOUR 5/16 -18 UNC
 THREADED MOUNTING
 HOLES ON A
 3.25" (83 mm)
 BOLT CIRCLE



PUMP WITH OPTIONAL SUPPORT STAND



FOUR 0.63" (16 mm)
 MOUNTING HOLES
 ON A 9.25" (235 mm)
 BOLT CIRCLE



| SUPPORT STAND OPTION | |
|------------------------------|--|
| Support Stand | Ductile Iron ASTM A536-84 Grade 65-45-12 |
| <input type="checkbox"/> YES | <input type="checkbox"/> NO |

OPERATING SPECIFICATIONS

| | Standard | | Optional |
|-------------|-------------------------|--------------------------|----------|
| | ANSI Class 125 | ANSI Class 250 | |
| Flange | ANSI Class 125 | ANSI Class 250 | |
| Pressure | 175 PSIG* (1210 KPA) | 300 PSIG** (2070 KPA) | CF |
| Temperature | 250°F (120°C) | 250°F (120°C) | CF |

Motors: All NEMA Standard ODP Frame (CZ Shaft)
 * In accordance with ANSI Standard B16.1 Class 125
 ** In accordance with ANSI Standard B16.1 Class 250 Dim.

MAXIMUM ASSEMBLY WEIGHT

| Motor Frame | Weight without Optional Stand Lbs (Kg) | Weight with Optional Stand Lbs (Kg) |
|---------------|--|---|
| 143CZ - 145CZ | 249 (113) | 275 (125) |

DIMENSIONS

*A & B Dimensions apply for all pump sizes.

| Model No. | Conn. | Motor Frame | HP 1760 RPM | Flange Size ASA | A* | B* | C | D | E MAX | F | G | H | J DIA |
|-----------|--------------------|-------------|-------------|-----------------|------------------------------------|-------------------------------------|---------------|-------------|-------------|---------------|---------------|-------------|------------|
| 3006 | 3 x 3 (76 x 76) | 143CZ | 1 | 3 (76) | 8.50 (216) if ANSI Class 125 | 10.00 (254) if ANSI Class 125 | 4.97 (126) | 15.56 (395) | 13.05 (332) | 4.67 (119) | 5.56 (141) | 0.25 (6) | 7.05 (179) |
| | | 145CZ | 1.5 | | | | | 15.56 (395) | 14.05 (357) | | | | 7.05 (179) |
| | | | | | | | | | | | | | |
| | | | | | | | | | | | | | |

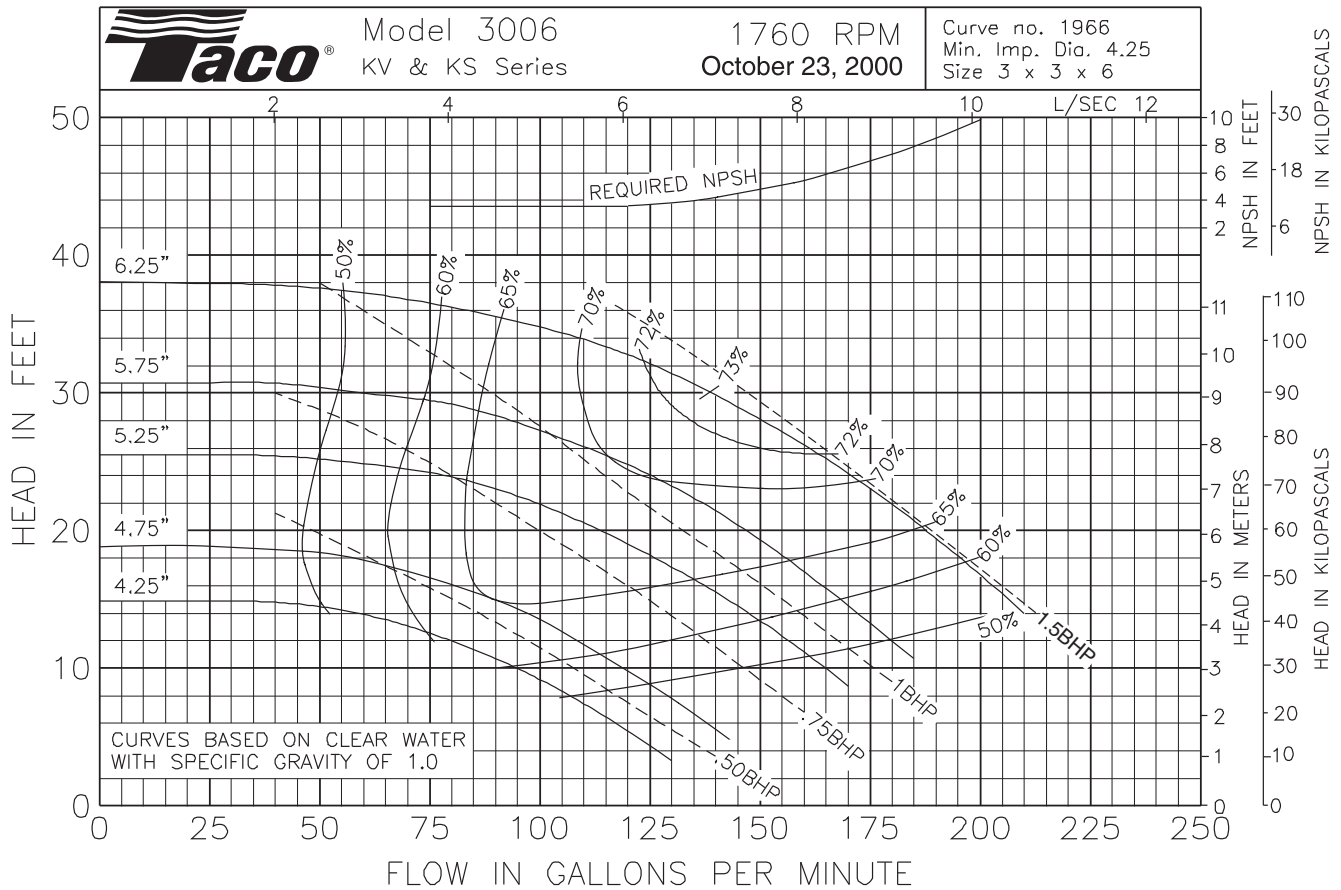
English dimensions are in inches. Metric dimensions are in millimeters. Metric data is presented in ().
 Do not use for construction purposes unless certified.

MATERIALS OF CONSTRUCTION

| | BRONZE FITTED | | | NSF 61 | | |
|--------------------|--|--|---|--|--|-----------------------------------|
| | STANDARD PUMP CONSTRUCTION | | OPTIONAL | STANDARD PUMP CONSTRUCTION | | OPTIONAL |
| | 125# Flange | 250# Flange | 125# or 250# | 125# Flange | 250# Flange | 125# or 250# |
| Casing | Cast Iron ASTM A48/ A48M-03 Class 30A | Ductile Iron ASTM A536-84 Grade 65-45-12 | N/A | Cast Iron ASTM A48/A48M-03 Class 30A | Ductile Iron ASTM A536-84 Grade 65-45-12 | N/A |
| Impeller | Bronze ASTM B584 ALLOY C83600 or C84400 | Bronze ASTM B584 ALLOY C83600 or C84400 | N/A | Stainless Steel ASTM A351/A 351M-08 | Stainless Steel ASTM A351/A 351M-08 | N/A |
| Wear Ring | N/A | N/A | Bronze ASTM B584-98A C92200 | N/A | N/A | Bronze ASTM B584-98A C92200 |
| Shaft | Stainless Steel TYPE 416"™" or 410"™" ASTM A582 | Stainless Steel TYPE 416"™" or 410"™" ASTM A582 | N/A | Stainless Steel TYPE 416"™" or 410"™" ASTM A582 | Stainless Steel TYPE 416"™" or 410"™" ASTM A582 | N/A |
| Coupling | Aluminum Alloy 6061-T6 | Aluminum Alloy 6061-T6 | N/A | Aluminum Alloy 6061-T6 | Bronze ASTM B584-98A C92200 | N/A |
| Mechanical Seal | Ceramic/EPT | Ceramic/EPT | Tungsten Carbide/EPT or Silicon- Carbide/EPT | Ceramic/EPT | Ceramic/EPT | N/A |
| Seal Flush Line | Copper & Brass C3600 | Copper & Brass C3600 | N/A | Copper & Brass C3600 | Copper & Brass C3600 | N/A |

N/A = Not available

Revised: 05/31/2017



Comments:



Taco, Inc., 1160 Cranston Street, Cranston, RI 02920 | Tel: (401) 942-8000 | FAX: (401) 942-2360

Taco (Canada), Ltd., 8450 Lawson Road, Suite #3, Milton, Ontario L9T 0J8 | Tel: (905) 564-9422 | FAX: (905) 564-9436

Visit our web site: www.TacoComfort.com | Printed in USA | ©2017 Taco, Inc.





Submittal Data Information

KS Series Vertical Split Coupled Pumps

301-1166

EFFECTIVE: MAY 31, 2017

SUPERSEDES: JUNE 25, 2016

3500 RPM MODEL 3006

JOB _____ ENGINEER _____

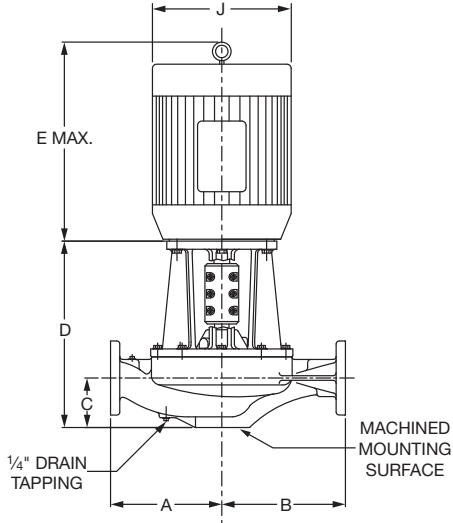
CONTRACTOR _____ REP. _____

| ITEM NO. | MODEL NO. | IMPELLER DIA. | G.P.M. | HEAD/FT. | H.P. | ELEC. CHAR. |
|----------|-----------|---------------|--------|----------|------|-------------|
|----------|-----------|---------------|--------|----------|------|-------------|

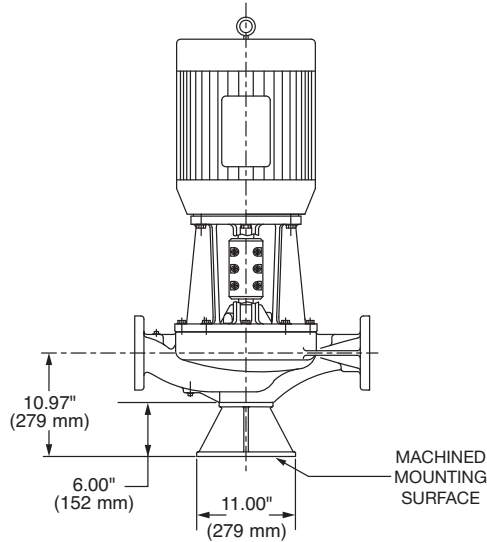
NSF 61 Certified

Yes No

WEIGHT _____ PUMP/MOTOR _____



PUMP WITH OPTIONAL SUPPORT STAND



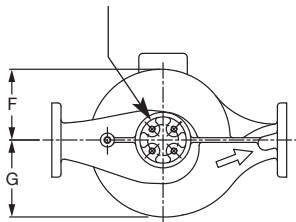
| SUPPORT STAND OPTION | |
|------------------------------|--|
| Support Stand | Ductile Iron ASTM A536-84 Grade 65-45-12 |
| <input type="checkbox"/> YES | <input type="checkbox"/> NO |

OPERATING SPECIFICATIONS

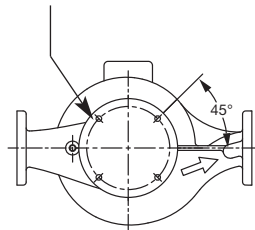
| | Standard | | Optional |
|-------------|-------------------------|--------------------------|----------|
| | ANSI Class 125 | ANSI Class 250 | |
| Flange | ANSI Class 125 | ANSI Class 250 | |
| Pressure | 175 PSIG* (1210 KPA) | 300 PSIG** (2070 KPA) | CF |
| Temperature | 250°F (120°C) | 250°F (120°C) | CF |

Motors: All NEMA Standard ODP Frame (CZ Shaft)
 * In accordance with ANSI Standard B16.1 Class 125
 ** In accordance with ANSI Standard B16.1 Class 250 Dim.

FOUR 5/16 -18 UNC
THREADED MOUNTING
HOLES ON A
3.25" (83 mm)
BOLT CIRCLE



FOUR 0.63" (16 mm)
MOUNTING HOLES
ON A 9.25" (235 mm)
BOLT CIRCLE



MAXIMUM ASSEMBLY WEIGHT

| Motor Frame | Weight without Optional Stand Lbs (Kg) | Weight with Optional Stand Lbs (Kg) |
|---------------|--|---|
| 143CZ - 145CZ | 264 (120) | 290 (132) |
| 182CZ - 184CZ | 305 (138) | 331 (150) |
| 213CZ - 215CZ | 389 (176) | 415 (188) |

DIMENSIONS

*A & B Dimensions apply for all pump sizes.

| Model No. | Conn. | Motor Frame | HP 3500 RPM | Flange Size ASA | A* | B* | C | D | E MAX | F | G | H | J DIA |
|-----------|--------------------|-------------|-------------|-----------------|------------------------------------|-------------------------------------|---------------|-------------|-------------|---------------|---------------|-------------|-------------|
| 3006 | 3 x 3 (76 x 76) | 145CZ | 3 | 3 (76) | 8.50 (216) if ANSI Class 125 | 10.00 (254) if ANSI Class 125 | 4.97 (126) | 15.56 (395) | 14.05 (357) | 4.67 (119) | 5.56 (141) | 0.25 (6) | 7.05 (179) |
| | | 182CZ | 5 | | | | | 15.56 (395) | 15.64 (397) | | | | 8.49 (216) |
| | | 184CZ | 7.5 | | | | | 15.56 (395) | 16.68 (424) | | | | 8.49 (216) |
| | | 213CZ | 10 | | | | | 15.56 (395) | 19.13 (486) | | | | 10.18 (259) |
| | | 215CZ | 15 | | | | | 15.56 (395) | 20.63 (524) | | | | 10.18 (259) |
| | | | | | | | | | | | | | |

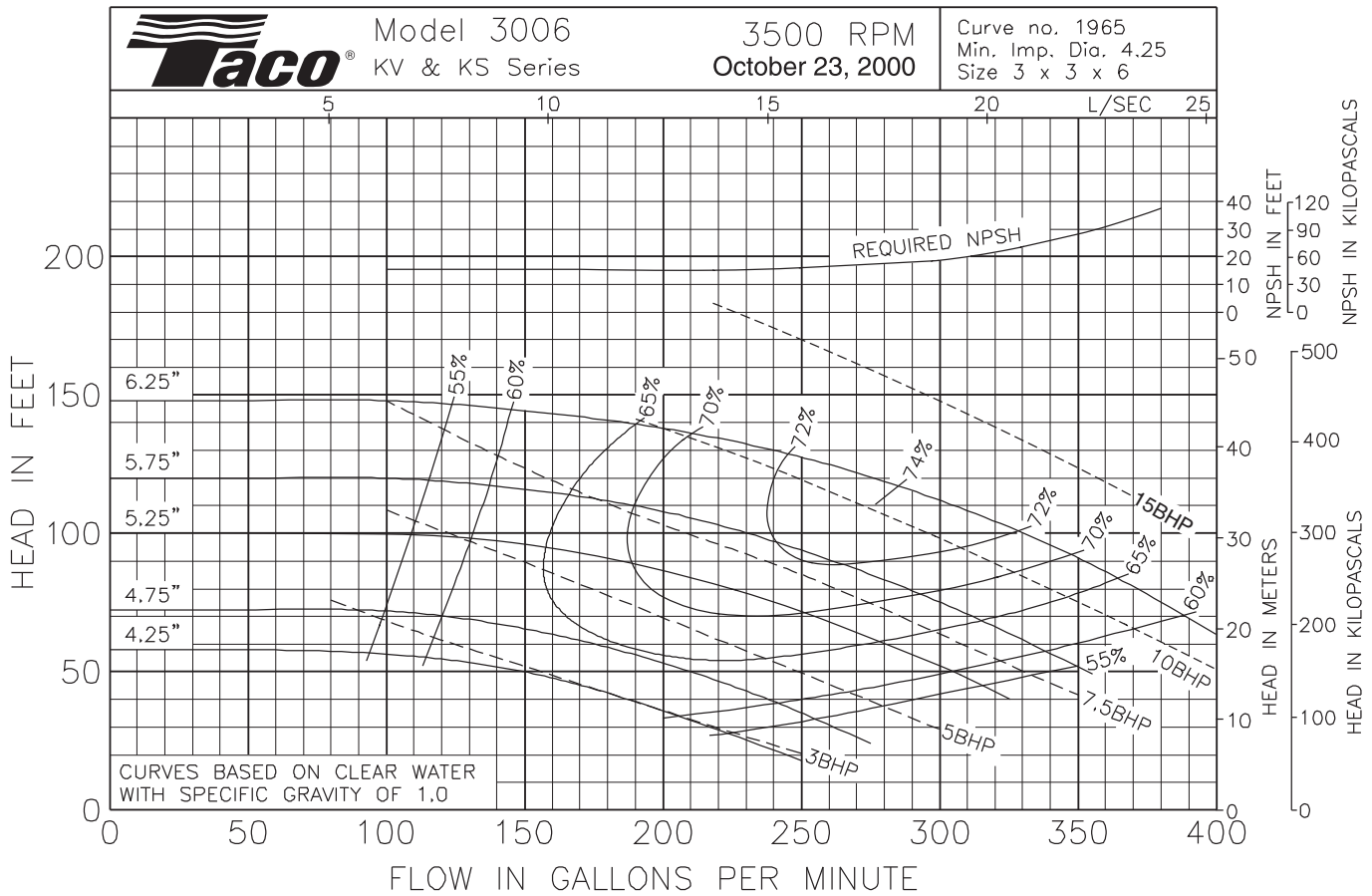
English dimensions are in inches. Metric dimensions are in millimeters. Metric data is presented in ().
 Do not use for construction purposes unless certified.

MATERIALS OF CONSTRUCTION

| | BRONZE FITTED | | | NSF 61 | | |
|--------------------|--|--|---|--|--|-----------------------------------|
| | STANDARD PUMP CONSTRUCTION | | OPTIONAL 125# or 250# | STANDARD PUMP CONSTRUCTION | | OPTIONAL 125# or 250# |
| | 125# Flange | 250# Flange | | 125# Flange | 250# Flange | |
| Casing | Cast Iron ASTM A48/ A48M-03 Class 30A | Ductile Iron ASTM A536-84 Grade 65-45-12 | N/A | Cast Iron ASTM A48/A48M-03 Class 30A | Ductile Iron ASTM A536-84 Grade 65-45-12 | N/A |
| Impeller | Bronze ASTM B584 ALLOY C83600 or C84400 | Bronze ASTM B584 ALLOY C83600 or C84400 | N/A | Stainless Steel ASTM A351/A 351M-08 | Stainless Steel ASTM A351/A 351M-08 | N/A |
| Wear Ring | N/A | N/A | Bronze ASTM B584-98A C92200 | N/A | N/A | Bronze ASTM B584-98A C92200 |
| Shaft | Stainless Steel TYPE 416"™" or 410"™" ASTM A582 | Stainless Steel TYPE 416"™" or 410"™" ASTM A582 | N/A | Stainless Steel TYPE 416"™" or 410"™" ASTM A582 | Stainless Steel TYPE 416"™" or 410"™" ASTM A582 | N/A |
| Coupling | Aluminum Alloy 6061-T6 | Aluminum Alloy 6061-T6 | N/A | Aluminum Alloy 6061-T6 | Bronze ASTM B584-98A C92200 | N/A |
| Mechanical Seal | Ceramic/EPT | Ceramic/EPT | Tungsten Carbide/EPT or Silicon- Carbide/EPT | Ceramic/EPT | Ceramic/EPT | N/A |
| Seal Flush Line | Copper & Brass C3600 | Copper & Brass C3600 | N/A | Copper & Brass C3600 | Copper & Brass C3600 | N/A |

N/A = Not available

Revised: 05/31/2017



Comments: _____



Taco, Inc., 1160 Cranston Street, Cranston, RI 02920 | Tel: (401) 942-8000 | FAX: (401) 942-2360

Taco (Canada), Ltd., 8450 Lawson Road, Suite #3, Milton, Ontario L9T 0J8 | Tel: (905) 564-9422 | FAX: (905) 564-9436

Visit our web site: www.TacoComfort.com | Printed in USA | ©2017 Taco, Inc.





Submittal Data Information

KS Series Vertical Split Coupled Pumps (50 Hz)

301-1180 I

EFFECTIVE: MAY 31, 2017

SUPERSEDES: JANUARY 8, 2010

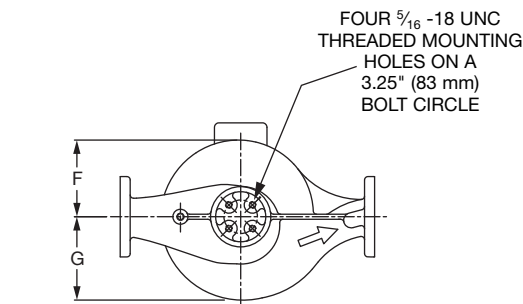
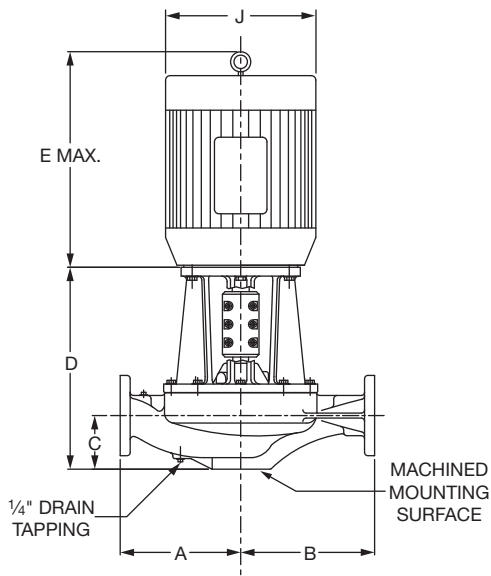
1450 RPM MODEL 3006

JOB _____ ENGINEER _____

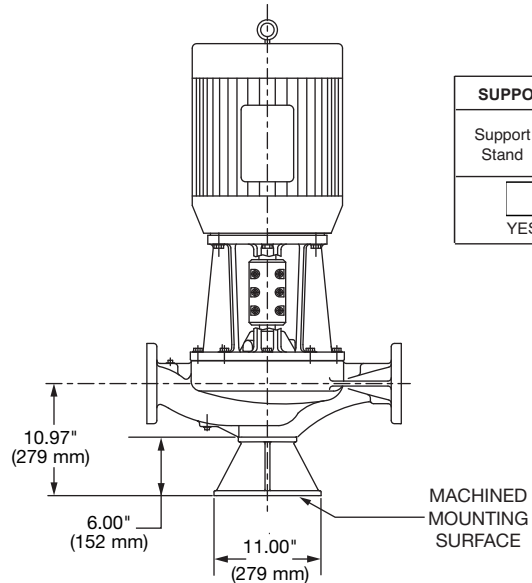
CONTRACTOR _____ REP. _____

| ITEM NO. | MODEL NO. | IMPELLER DIA. | G.P.M. | HEAD/FT. | H.P. | ELEC. CHAR. |
|----------|-----------|---------------|--------|----------|------|-------------|
| | | | | | | |

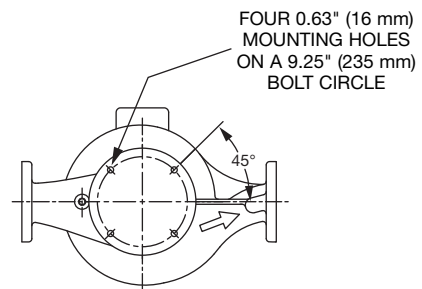
WEIGHT _____ PUMP/MOTOR _____



PUMP WITH OPTIONAL SUPPORT STAND



| SUPPORT STAND OPTION | |
|--------------------------|--|
| Support Stand | Ductile Iron ASTM A536-84 Grade 65-45-12 |
| <input type="checkbox"/> | <input type="checkbox"/> |
| YES | NO |



DIMENSIONS

*A & B Dimensions apply for all pump sizes.

| Model No. | Conn. | Motor Frame | HP 1450 RPM | Flange Size ASA | A* | B* | C | D | E MAX | F | G | H | J DIA |
|-----------|--------------------|-------------|-------------|-----------------|------------------------------------|-------------------------------------|-------------------|-------------|-------------|-------------------|-------------------|-----------------|------------|
| 3006 | 3 x 3 (76 x 76) | 143CZ | 1 | 3 (76) | 8.50 (216) if ANSI Class 125 | 10.00 (254) if ANSI Class 125 | 4.97 (126) | 15.56 (395) | 13.05 (331) | 4.67 (119) | 5.56 (141) | 0.25 (6) | 7.05 (179) |
| | | | | | | | | | | | | | |
| | | | | | | | | | | | | | |
| | | | | | | | | | | | | | |
| | | | | | | | | | | | | | |
| | | | | | 8.87 (225) if ANSI Class 250 | 10.37 (263) if ANSI Class 250 | | | | | | | |

English dimensions are in inches. Metric dimensions are in millimeters. Metric data is presented in ().
Do not use for construction purposes unless certified.

MATERIALS OF CONSTRUCTION

| | BRONZE FITTED | | |
|-----------------|--|--|---|
| | STANDARD PUMP CONSTRUCTION | | OPTIONAL |
| | 125# Flange | 250# Flange | 125# or 250# |
| Casing | Cast Iron ASTM A48/ A48M-03 Class 30A | Ductile Iron ASTM A536-84 Grade 65-45-12 | N/A |
| Impeller | Bronze ASTM B584 ALLOY C83600 or C84400 | Bronze ASTM B584 ALLOY C83600 or C84400 | N/A |
| Wear Ring | N/A | N/A | Bronze ASTM B584-98A C92200 |
| Shaft | Stainless Steel TYPE 416" T" or 410" T" ASTM A582 | Stainless Steel TYPE 416" T" or 410" T" ASTM A582 | N/A |
| Coupling | Aluminum Alloy 6061-T6 | Aluminum Alloy 6061-T6 | N/A |
| Mechanical Seal | Ceramic/EPT | Ceramic/EPT | Tungsten Carbide/EPT or Silicon- Carbide/EPT |
| Seal Flush Line | Copper & Brass C3600 | Copper & Brass C3600 | N/A |

N/A = Not available

Revised: 05/31/2017

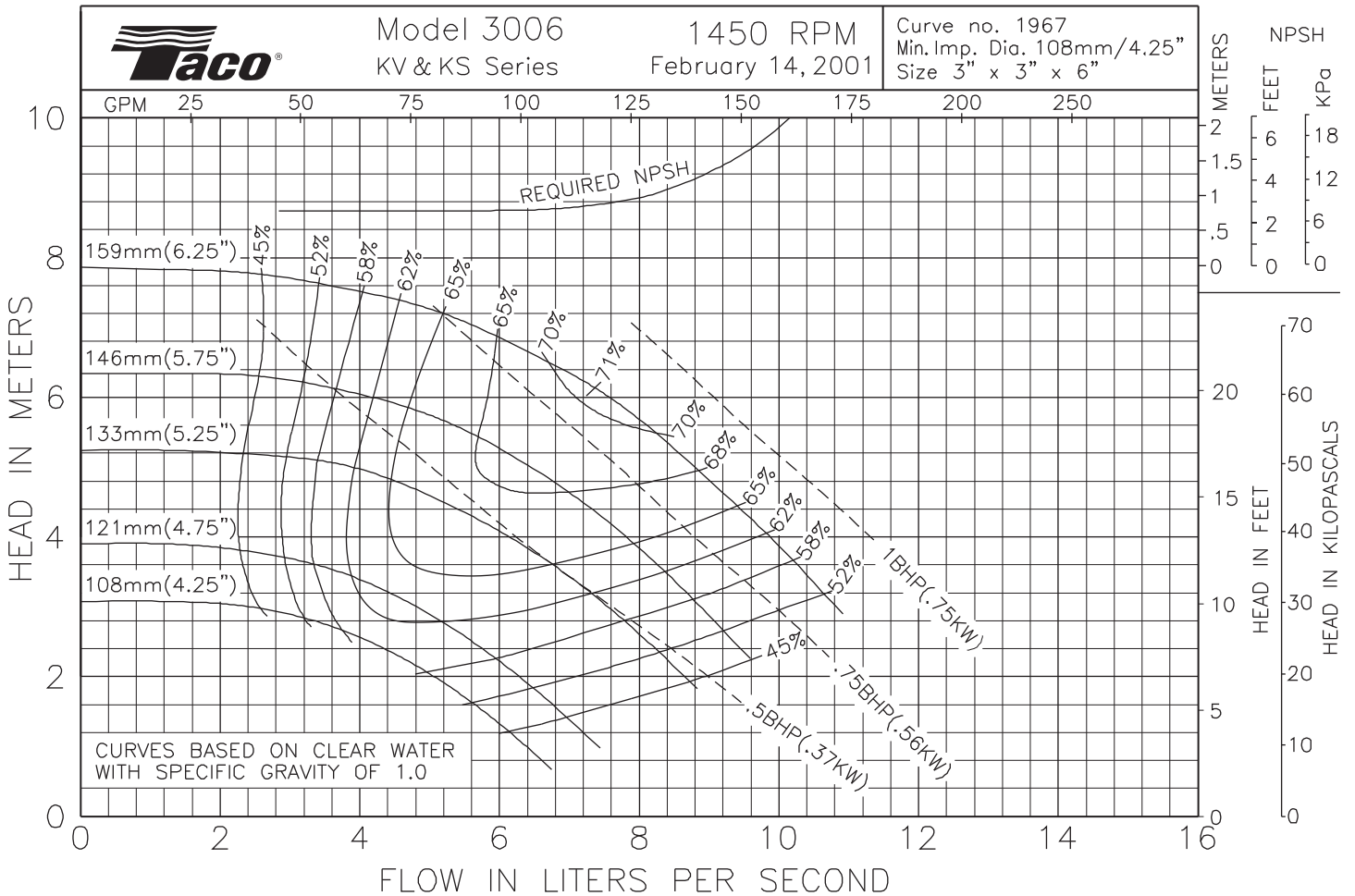
OPERATING SPECIFICATIONS

| | Standard | | Optional |
|-------------|-------------------------|--------------------------|----------|
| Flange | ANSI Class 125 | ANSI Class 250 | |
| Pressure | 175 PSIG* (1210 KPA) | 300 PSIG** (2070 KPA) | CF |
| Temperature | 250°F (120°C) | 250°F (120°C) | CF |

Motors: All NEMA Standard ODP Frame (CZ Shaft)
 * In accordance with ANSI Standard B16.1 Class 125
 ** In accordance with ANSI Standard B16.1 Class 250 Dim.

MAXIMUM ASSEMBLY WEIGHT

| Motor Frame | Weight without Optional Stand Lbs (Kg) | Weight with Optional Stand Lbs (Kg) |
|---------------|--|---|
| 143CZ - 145CZ | 274 (124) | 300 (136) |



Comments:



Taco, Inc., 1160 Cranston Street, Cranston, RI 02920 | Tel: (401) 942-8000 | FAX: (401) 942-2360

Taco (Canada), Ltd., 8450 Lawson Road, Suite #3, Milton, Ontario L9T 0J8 | Tel: (905) 564-9422 | FAX: (905) 564-9436

Visit our web site: www.TacoComfort.com | Printed in USA | ©2017 Taco, Inc.





Submittal Data Information

KS Series Vertical Split Coupled Pumps (50 Hz)

301-1212 I

EFFECTIVE: MAY 31, 2017

SUPERSEDES: JANUARY 8, 2010

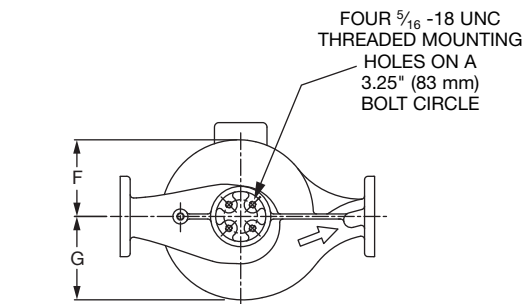
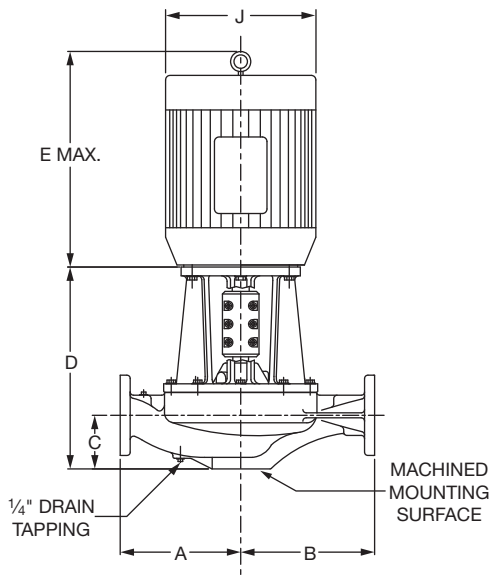
2900 RPM MODEL 3006

JOB _____ ENGINEER _____

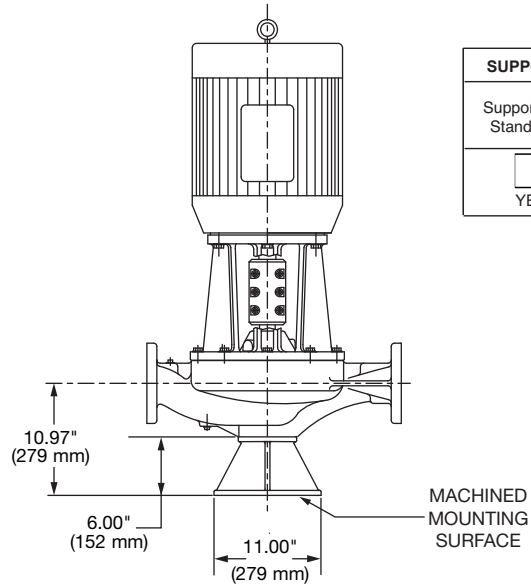
CONTRACTOR _____ REP. _____

| ITEM NO. | MODEL NO. | IMPELLER DIA. | G.P.M. | HEAD/FT. | H.P. | ELEC. CHAR. |
|----------|-----------|---------------|--------|----------|------|-------------|
| | | | | | | |

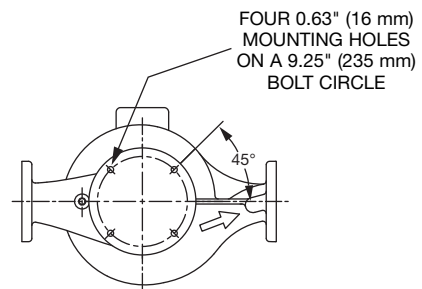
WEIGHT _____ PUMP/MOTOR _____



PUMP WITH OPTIONAL SUPPORT STAND



| SUPPORT STAND OPTION | |
|--------------------------|--|
| Support Stand | Ductile Iron ASTM A536-84 Grade 65-45-12 |
| <input type="checkbox"/> | <input type="checkbox"/> |
| YES | NO |



DIMENSIONS

*A & B Dimensions apply for all pump sizes.

| Model No. | Conn. | Motor Frame | HP 2900 RPM | Flange Size ASA | A* | B* | C | D | E MAX | F | G | H | J DIA | | | | | | | | |
|-----------|--------------------|-------------|-------------|-----------------|------------------------------------|-------------------------------------|-------------------|-------------|-------------|-------------------|-------------------|-----------------|------------|--|--|--|--|--|--|--|--|
| 3006 | 3 x 3 (76 x 76) | 145CZ | 2 | 3 (76) | 8.50 (216) if ANSI Class 125 | 10.00 (254) if ANSI Class 125 | 4.97 (126) | 15.56 (395) | 14.05 (357) | 4.67 (119) | 5.56 (141) | 0.25 (6) | 7.05 (179) | | | | | | | | |
| | | | 3 | | | | | 15.56 (395) | 14.05 (357) | | | | 7.05 (179) | | | | | | | | |
| | | 182CZ | 5 | | | | | 15.56 (395) | 15.64 (397) | | | | 8.49 (216) | | | | | | | | |
| | | | 7.5 | | | | | 15.56 (395) | 16.68 (424) | | | | 8.49 (216) | | | | | | | | |
| | | | | | | | | | | | | | | | | | | | | | |
| | | | | | | | | | | | | | | | | | | | | | |

English dimensions are in inches. Metric dimensions are in millimeters. Metric data is presented in ().
Do not use for construction purposes unless certified.

MATERIALS OF CONSTRUCTION

| | BRONZE FITTED | | |
|-----------------|--|--|--|
| | STANDARD PUMP CONSTRUCTION | | OPTIONAL |
| | 125# Flange | 250# Flange | 125# or 250# |
| Casing | Cast Iron ASTM A48/ A48M-03 Class 30A | Ductile Iron ASTM A536-84 Grade 65-45-12 | N/A |
| Impeller | Bronze ASTM B584 ALLOY C83600 or C84400 | Bronze ASTM B584 ALLOY C83600 or C84400 | N/A |
| Wear Ring | N/A | N/A | Bronze ASTM B584-98A C92200 |
| Shaft | Stainless Steel TYPE 416"Ti" or 410"Ti" ASTM A582 | Stainless Steel TYPE 416"Ti" or 410"Ti" ASTM A582 | N/A |
| Coupling | Aluminum Alloy 6061-T6 | Aluminum Alloy 6061-T6 | N/A |
| Mechanical Seal | Ceramic/EPT | Ceramic/EPT | Tungsten Carbide/EPT or Silicon-Carbide/EPT |
| Seal Flush Line | Copper & Brass C3600 | Copper & Brass C3600 | N/A |

N/A = Not available

Revised: 05/31/2017

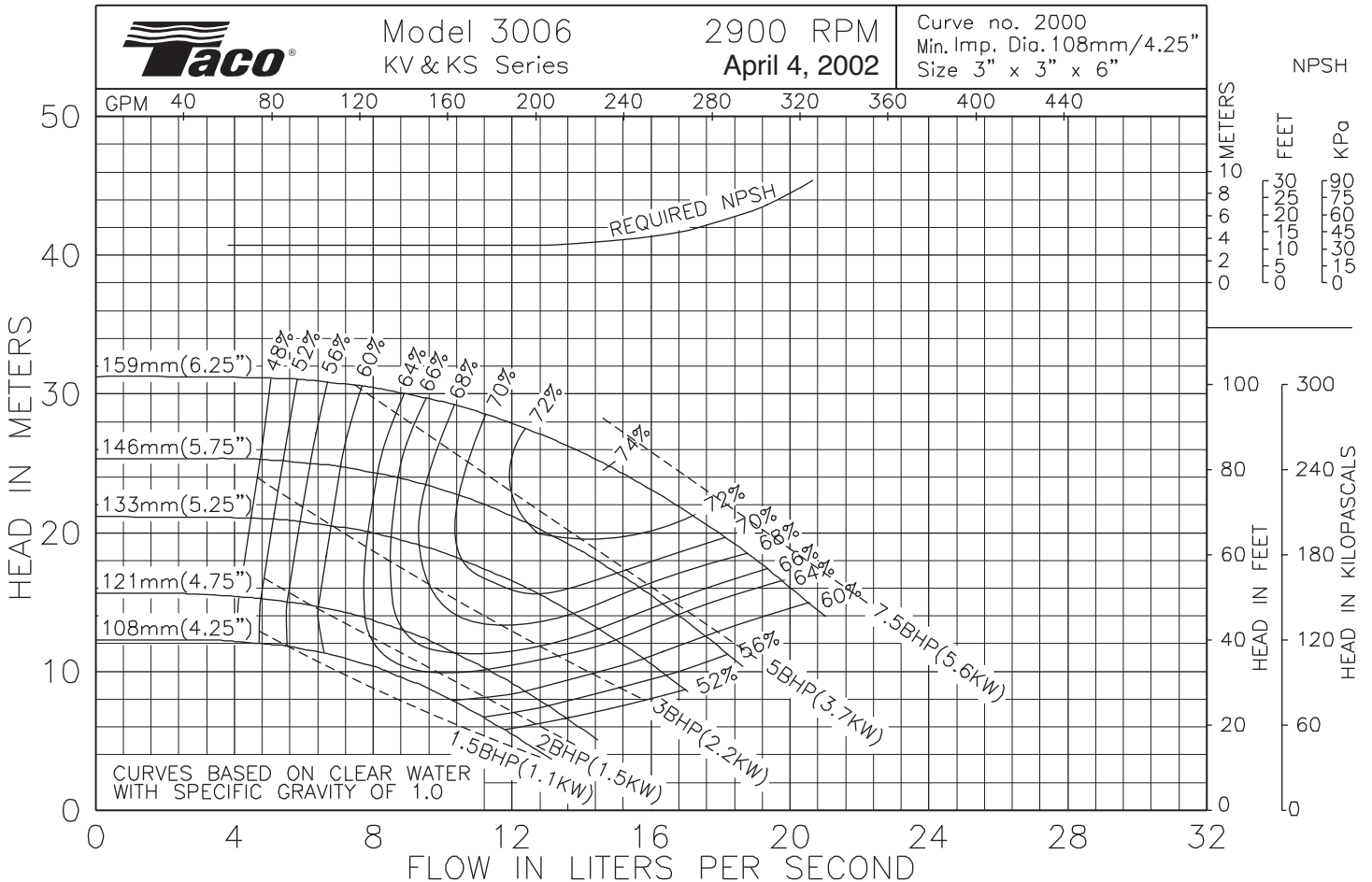
OPERATING SPECIFICATIONS

| | Standard | | Optional |
|-------------|-------------------------|--------------------------|----------|
| Flange | ANSI Class 125 | ANSI Class 250 | |
| Pressure | 175 PSIG* (1210 KPA) | 300 PSIG** (2070 KPA) | CF |
| Temperature | 250°F (120°C) | 250°F (120°C) | CF |

Motors: All NEMA Standard ODP Frame (CZ Shaft)
 * In accordance with ANSI Standard B16.1 Class 125
 ** In accordance with ANSI Standard B16.1 Class 250 Dim.

MAXIMUM ASSEMBLY WEIGHT

| Motor Frame | Weight without Optional Stand Lbs (Kg) | Weight with Optional Stand Lbs (Kg) |
|---------------|--|---|
| 143CZ - 145CZ | 290 (132) | 316 (143) |
| 182CZ - 184CZ | 336 (152) | 362 (164) |



Comments:



Taco, Inc., 1160 Cranston Street, Cranston, RI 02920 | Tel: (401) 942-8000 | FAX: (401) 942-2360

Taco (Canada), Ltd., 8450 Lawson Road, Suite #3, Milton, Ontario L9T 0J8 | Tel: (905) 564-9422 | FAX: (905) 564-9436

Visit our web site: www.TacoComfort.com | Printed in USA | ©2017 Taco, Inc.

