



Submittal Data Information

KS Series Vertical Split Coupled Pumps

301-1801

EFFECTIVE: MAY 31, 2017

SUPERSEDES: JANUARY 8, 2010

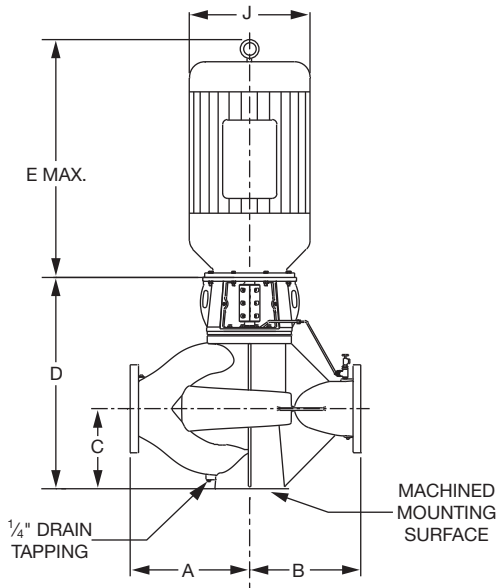
1160 RPM MODEL 1415B

JOB _____ ENGINEER _____

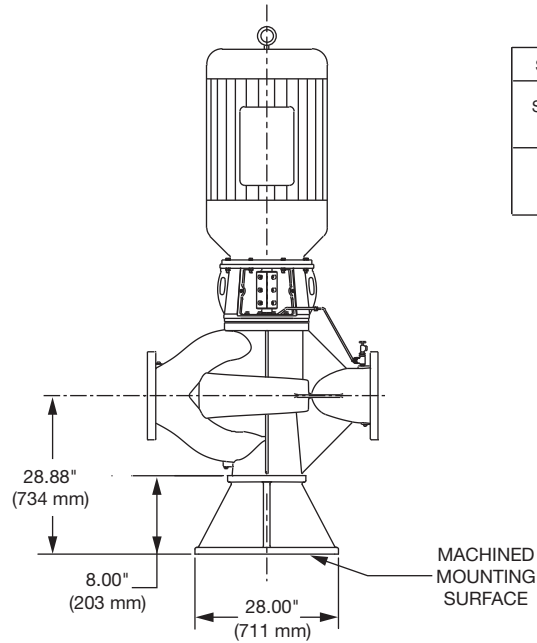
CONTRACTOR _____ REP. _____

ITEM NO.	MODEL NO.	IMPELLER DIA.	G.P.M.	HEAD/FT.	H.P.	ELEC. CHAR.

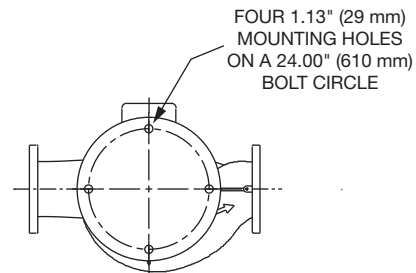
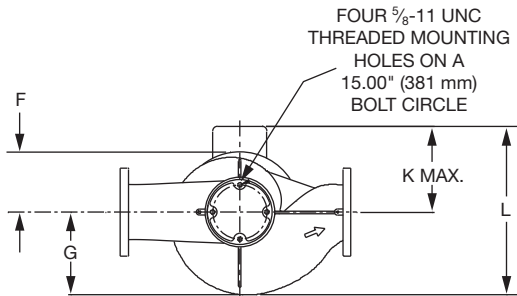
WEIGHT _____ PUMP/MOTOR _____



PUMP WITH OPTIONAL SUPPORT STAND



SUPPORT STAND OPTION	
Support Stand	Ductile Iron ASTM A536-84 Grade 65-45-12
<input type="checkbox"/>	<input type="checkbox"/>
YES	NO



DIMENSIONS

*A & B Dimensions apply for all pump sizes.

Model No.	Conn.	Motor Frame	HP 1160 RPM	Flange Size ASA	A*	B*	C	D	E MAX	F	G	H	J DIA MAX	K MAX	L
1415B	14 x 14 (356 x 356)	405CZ	75	14 (356)	30.38 (772) if ANSI Class 125	28.38 (721) if ANSI Class 125	20.88 (530)	54.31 (1379)	38.53 (979)	14.35 (364)	21.63 (549)	0.25 (6)	21.42 (544)	18.65 (474)	40.27 (1023)
		444HP	100						43.49 (1105)				24.56 (624)	20.75 (527)	42.37 (1076)
		445HP	125						43.49 (1105)				24.56 (624)	20.75 (527)	42.37 (1076)
		447HP	150						52.50 (1333)				24.56 (624)	21.71 (551)	43.33 (1101)
		449HP	200						52.50 (1333)				24.56 (624)	21.71 (551)	43.33 (1101)
					31.12 (790) if ANSI Class 250	29.12 (740) if ANSI Class 250									

English dimensions are in inches. Metric dimensions are in millimeters. Metric data is presented in ().
Do not use for construction purposes unless certified.

MATERIALS OF CONSTRUCTION

	BRONZE FITTED		
	STANDARD PUMP CONSTRUCTION		OPTIONAL
	125# Flange	250# Flange	125# or 250#
Casing	Cast Iron ASTM A48/ A48M-03 Class 30A	Ductile Iron ASTM A536-84 Grade 65-45-12	N/A
Impeller	Bronze ASTM B584 ALLOY C83600 or C84400	Bronze ASTM B584 ALLOY C83600 or C84400	N/A
Wear Ring	N/A	N/A	Bronze ASTM B584-98A C92200
Shaft	Stainless Steel TYPE 416"™" or 410"™" ASTM A582	Stainless Steel TYPE 416"™" or 410"™" ASTM A582	N/A
Coupling	Aluminum Alloy 6061-T6	Aluminum Alloy 6061-T6	N/A
Mechanical Seal	Ceramic/EPT	Ceramic/EPT	Tungsten Carbide/EPT or Silicon Carbide/EPT
Seal Flush Line	Copper & Brass C3600	Copper & Brass C3600	N/A

N/A = Not available

Revised: 05/31/2017

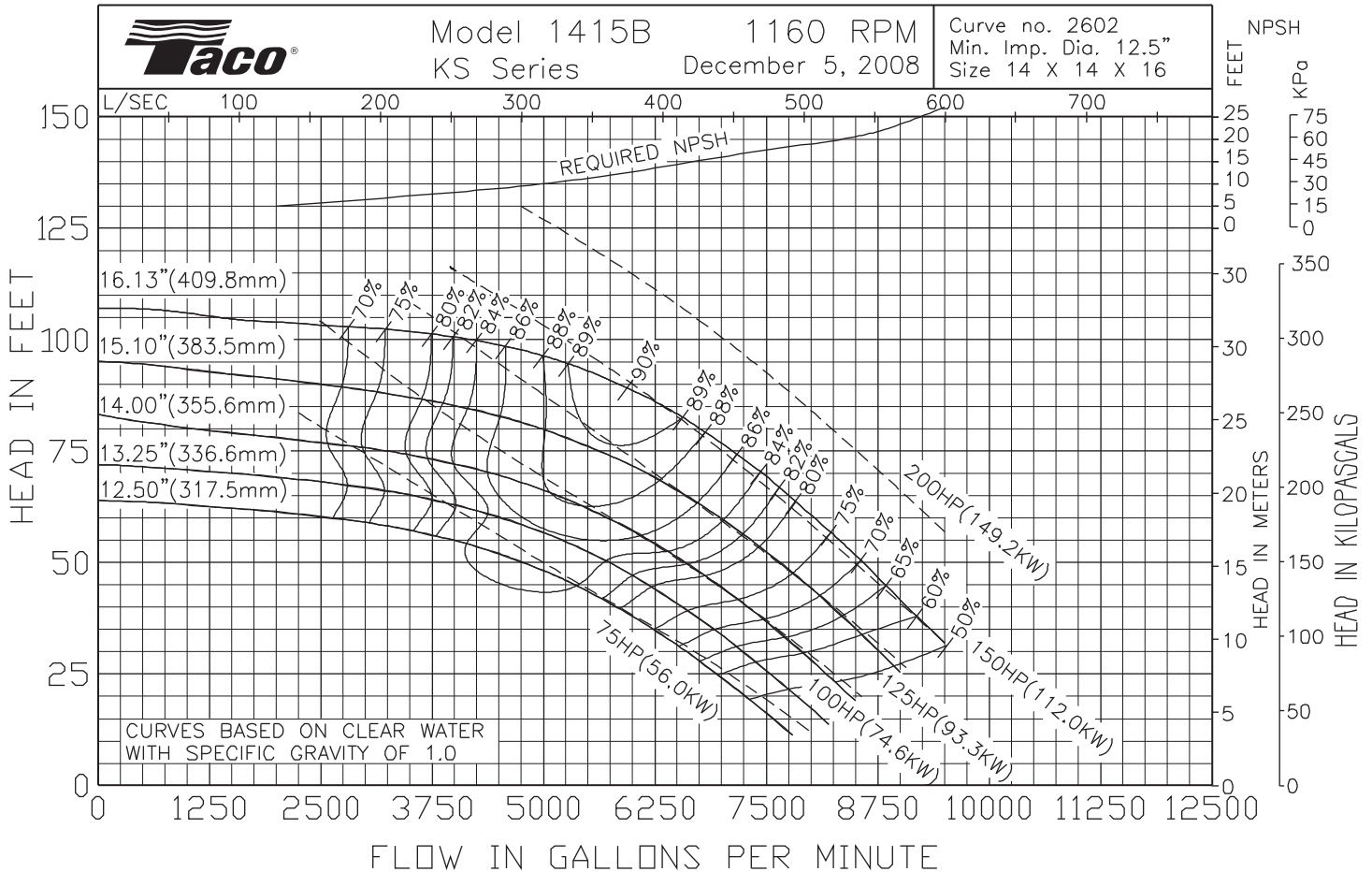
OPERATING SPECIFICATIONS

	Standard		Optional
Flange	ANSI Class 125	ANSI Class 250	
Pressure	175 PSIG* (1210 KPA)	300 PSIG** (2070 KPA)	CF
Temperature	250°F (120°C)	250°F (120°C)	CF

Motors: All NEMA Standard ODP Frame (CZ Shaft)
* In accordance with ANSI Standard B16.1 Class 125
** In accordance with ANSI Standard B16.1 Class 250 Dim.

MAXIMUM ASSEMBLY WEIGHT

Motor Frame	Weight without Optional Stand Lbs (Kg)	Weight with Optional Stand Lbs (Kg)
404CZ - 405CZ	4610 (2091)	4921 (2232)
444HP - 445HP	5114 (2320)	5425 (2461)
447HP - 449HP	6090 (2762)	6401 (2903)



Comments:



Taco, Inc., 1160 Cranston Street, Cranston, RI 02920 | Tel: (401) 942-8000 | FAX: (401) 942-2360

Taco (Canada), Ltd., 8450 Lawson Road, Suite #3, Milton, Ontario L9T 0J8 | Tel: (905) 564-9422 | FAX: (905) 564-9436

Visit our web site: www.TacoComfort.com | Printed in USA | ©2017 Taco, Inc.





Submittal Data Information

KS Series Vertical Split Coupled Pumps

301-1802

EFFECTIVE: MAY 31, 2017

SUPERSEDES: MAY 1, 2010

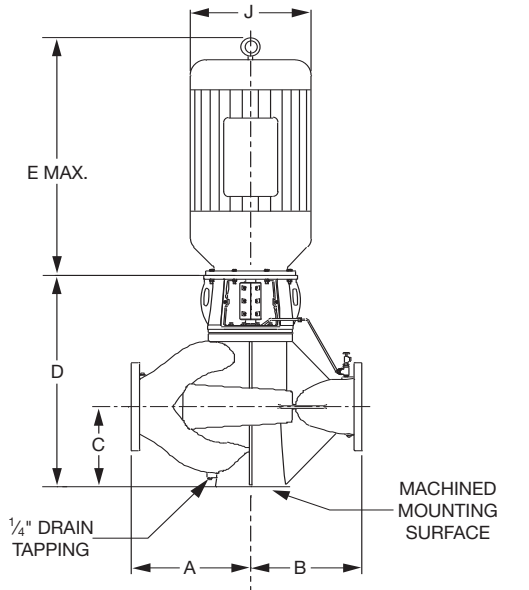
1760 RPM MODEL 1415B

JOB _____ ENGINEER _____

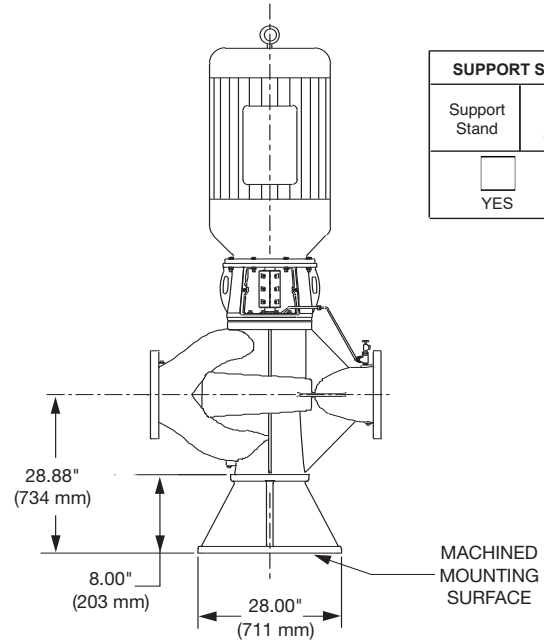
CONTRACTOR _____ REP. _____

ITEM NO.	MODEL NO.	IMPELLER DIA.	G.P.M.	HEAD/FT.	H.P.	ELEC. CHAR.
----------	-----------	---------------	--------	----------	------	-------------

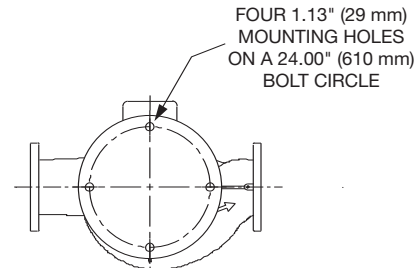
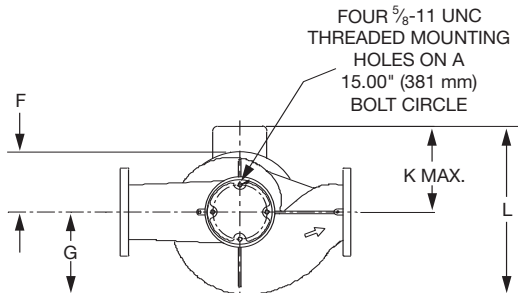
WEIGHT _____ PUMP/MOTOR _____



PUMP WITH OPTIONAL SUPPORT STAND



SUPPORT STAND OPTION	
Support Stand	Ductile Iron ASTM A536-84 Grade 65-45-12
<input type="checkbox"/> YES	<input type="checkbox"/> NO



DIMENSIONS

*A & B Dimensions apply for all pump sizes.

Model No.	Conn.	Motor Frame	HP 1760 RPM	Flange Size ASA	A*	B*	C	D	E MAX	F	G	H	J DIA MAX	K MAX	L											
1415B	14 x 14 (356 x 356)	449HP	250	14 (356)	30.38 (772) if ANSI Class 125	28.38 (721) if ANSI Class 125	20.88	54.31 (1379)	52.50 (1334)	14.35 (364)	21.63 (549)	0.25 (6)	24.56 (624)	21.71 (551)	43.33 (1101)											
		449HP	300						52.50 (1334)				24.56 (624)	21.71 (551)	43.33 (1101)											
		449HP	350						52.50 (1334)				24.56 (624)	21.71 (551)	43.33 (1101)											
		G5010	400						69.75 (1772)				29.00 (737)	27.00 (686)	46.40 (1079)											
		G5810	450						87.29 (2217)				32.24 (819)	28.85 (733)	48.25 (1226)											
			500						87.29 (2217)				32.24 (819)	28.85 (733)	48.25 (1226)											
			600						87.29 (2217)				32.24 (819)	28.85 (733)	48.25 (1226)											

English dimensions are in inches. Metric dimensions are in millimeters. Metric data is presented in ().
Do not use for construction purposes unless certified.

MATERIALS OF CONSTRUCTION

	BRONZE FITTED		
	STANDARD PUMP CONSTRUCTION		OPTIONAL
	125# Flange	250# Flange	125# or 250#
Casing	Cast Iron ASTM A48/ A48M-03 Class 30A	Ductile Iron ASTM A536-84 Grade 65-45-12	N/A
Impeller	Bronze ASTM B584 ALLOY C83600 or C84400	Bronze ASTM B584 ALLOY C83600 or C84400	N/A
Wear Ring	N/A	N/A	Bronze ASTM B584-98A C92200
Shaft	Stainless Steel TYPE 416"™" or 410"™" ASTM A582	Stainless Steel TYPE 416"™" or 410"™" ASTM A582	N/A
Coupling	Aluminum Alloy 6061-T6	Aluminum Alloy 6061-T6	N/A
Mechanical Seal	Ceramic/EPT	Ceramic/EPT	Tungsten Carbide/EPT or Silicon- Carbide/EPT
Seal Flush Line	Copper & Brass C3600	Copper & Brass C3600	N/A

N/A = Not available

Revised: 05/31/2017

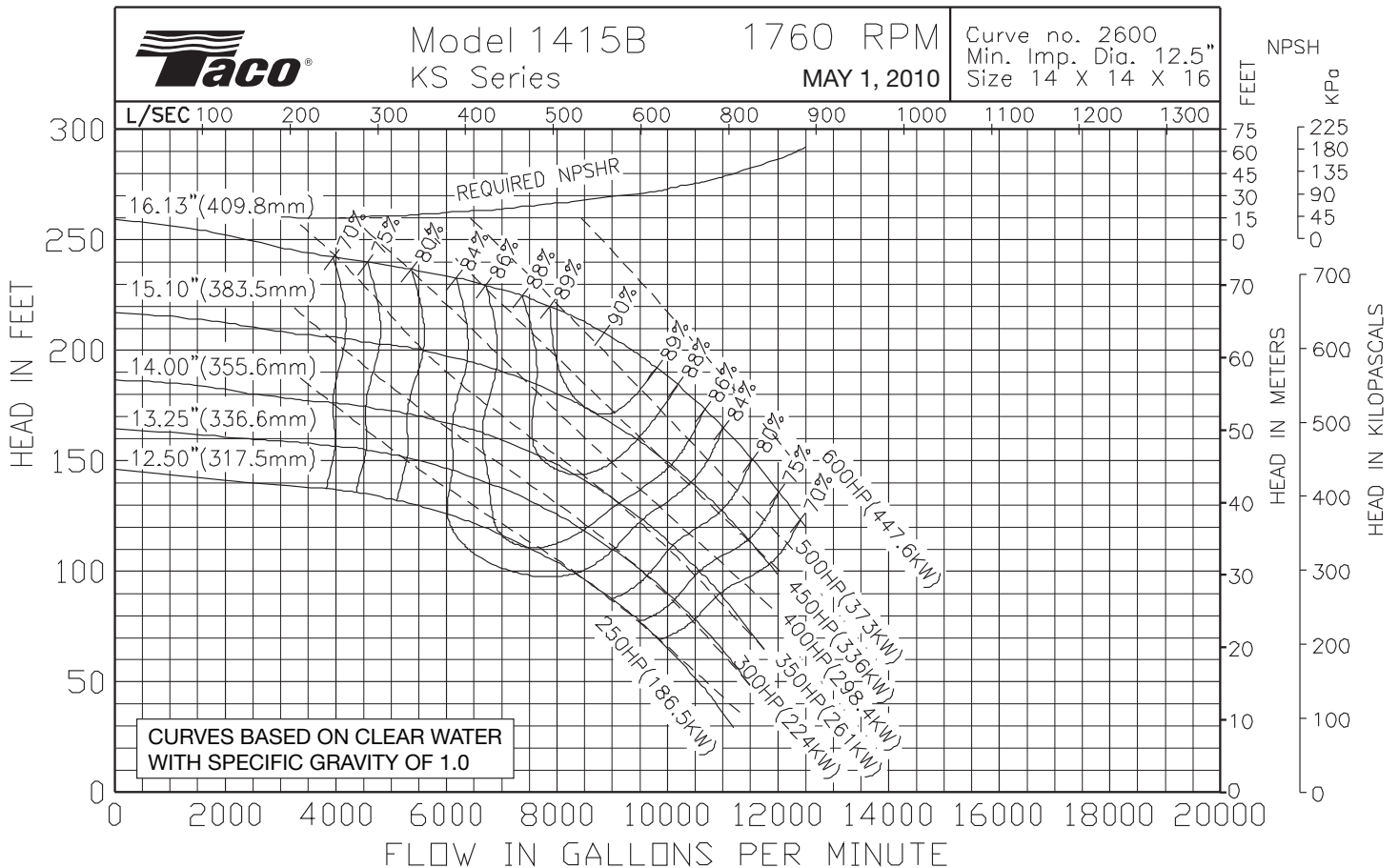
OPERATING SPECIFICATIONS

	Standard		Optional
Flange	ANSI Class 125	ANSI Class 250	
Pressure	175 PSIG* (1210 KPA)	300 PSIG** (2070 KPA)	CF
Temperature	250°F (120°C)	250°F (120°C)	CF

Motors: All NEMA Standard ODP Frame (CZ Shaft)
 * In accordance with ANSI Standard B16.1 Class 125
 ** In accordance with ANSI Standard B16.1 Class 250 Dim.

MAXIMUM ASSEMBLY WEIGHT

Motor Frame	Weight without Optional Stand Lbs (Kg)	Weight with Optional Stand Lbs (Kg)
447HP - 449HP	6090 (2762)	6401 (2903)
G5010	8650 (3924)	8961 (4065)
G5810	13450 (6101)	13761 (6242)



Comments:



Submittal Data Information

KS Series Vertical Split Coupled Pumps (50 Hz)

301-1803 I

EFFECTIVE: MAY 31, 2017

SUPERSEDES: JANUARY 8, 2010

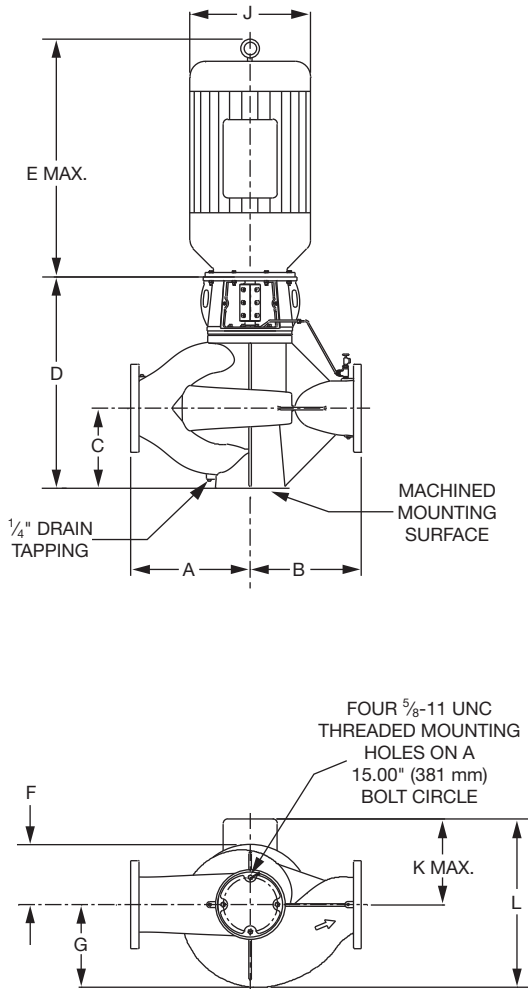
1450 RPM MODEL 1415B

JOB _____ ENGINEER _____

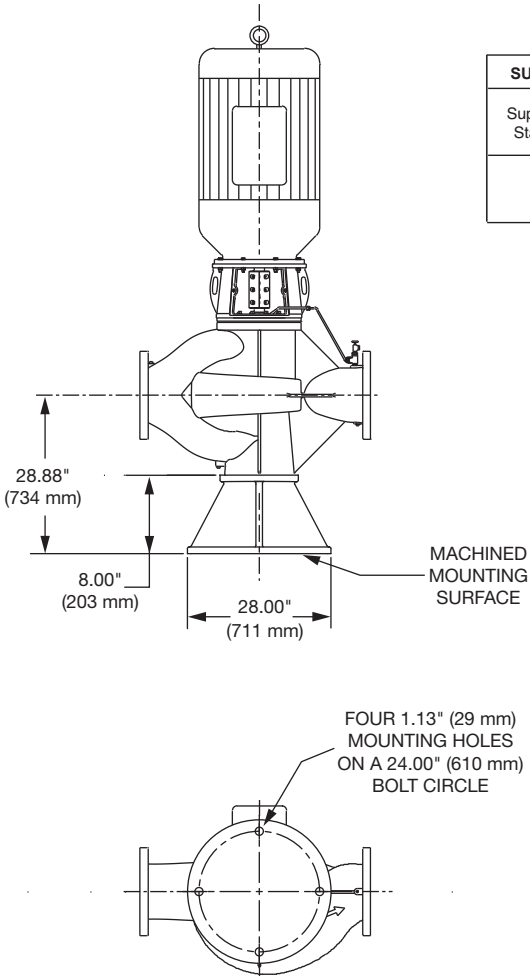
CONTRACTOR _____ REP. _____

ITEM NO.	MODEL NO.	IMPELLER DIA.	G.P.M.	HEAD/FT.	H.P.	ELEC. CHAR.
----------	-----------	---------------	--------	----------	------	-------------

WEIGHT _____ PUMP/MOTOR _____



PUMP WITH OPTIONAL SUPPORT STAND



SUPPORT STAND OPTION	
Support Stand	Ductile Iron ASTM A536-84 Grade 65-45-12
<input type="checkbox"/> YES	<input type="checkbox"/> NO

DIMENSIONS

*A & B Dimensions apply for all pump sizes.

Model No.	Conn.	Motor Frame	HP (KW) 1450 RPM	Flange Size ASA	A*	B*	C	D	E MAX	F	G	H	J DIA MAX	K MAX	L
1415B	14 x 14 (356 x 356)	445HP	150 (112.0)	14 (356)	30.38 (772) if ANSI Class 125	28.38 (721) if ANSI Class 125	20.88	54.31	43.49 (1105)	14.35	21.63	0.25	24.56 (624)	20.75 (527)	42.37 (1076)
		447HP	200 (149.2)						52.50 (1333)				24.56 (624)	21.71 (551)	43.33 (1101)
		449HP	250 (186.5)						52.50 (1333)				24.56 (624)	21.71 (551)	43.33 (1101)
		449HP	300 (223.8)						52.50 (1333)				24.56 (624)	21.71 (551)	43.33 (1101)
		449HP	350 (261.1)						52.50 (1333)				24.56 (624)	21.71 (551)	43.33 (1101)
					31.12 (790) if ANSI Class 250	29.12 (740) if ANSI Class 250	(530)	(1379)		(364)	(549)	(6)			

English dimensions are in inches. Metric dimensions are in millimeters. Metric data is presented in ().
Do not use for construction purposes unless certified.

MATERIALS OF CONSTRUCTION

	BRONZE FITTED		
	STANDARD PUMP CONSTRUCTION		OPTIONAL 125# or 250#
	125# Flange	250# Flange	
Casing	Cast Iron ASTM A48/ A48M-03 Class 30A	Ductile Iron ASTM A536-84 Grade 65-45-12	N/A
Impeller	Bronze ASTM B584 ALLOY C83600 or C84400	Bronze ASTM B584 ALLOY C83600 or C84400	N/A
Wear Ring	N/A	N/A	Bronze ASTM B584-98A C92200
Shaft	Stainless Steel TYPE 416"™ or 410"™ ASTM A582	Stainless Steel TYPE 416"™ or 410"™ ASTM A582	N/A
Coupling	Aluminum Alloy 6061-T6	Aluminum Alloy 6061-T6	N/A
Mechanical Seal	Ceramic/EPT	Ceramic/EPT	Tungsten Carbide/EPT or Silicon- Carbide/EPT
Seal Flush Line	Copper & Brass C3600	Copper & Brass C3600	N/A

N/A = Not available

Revised: 05/31/2017

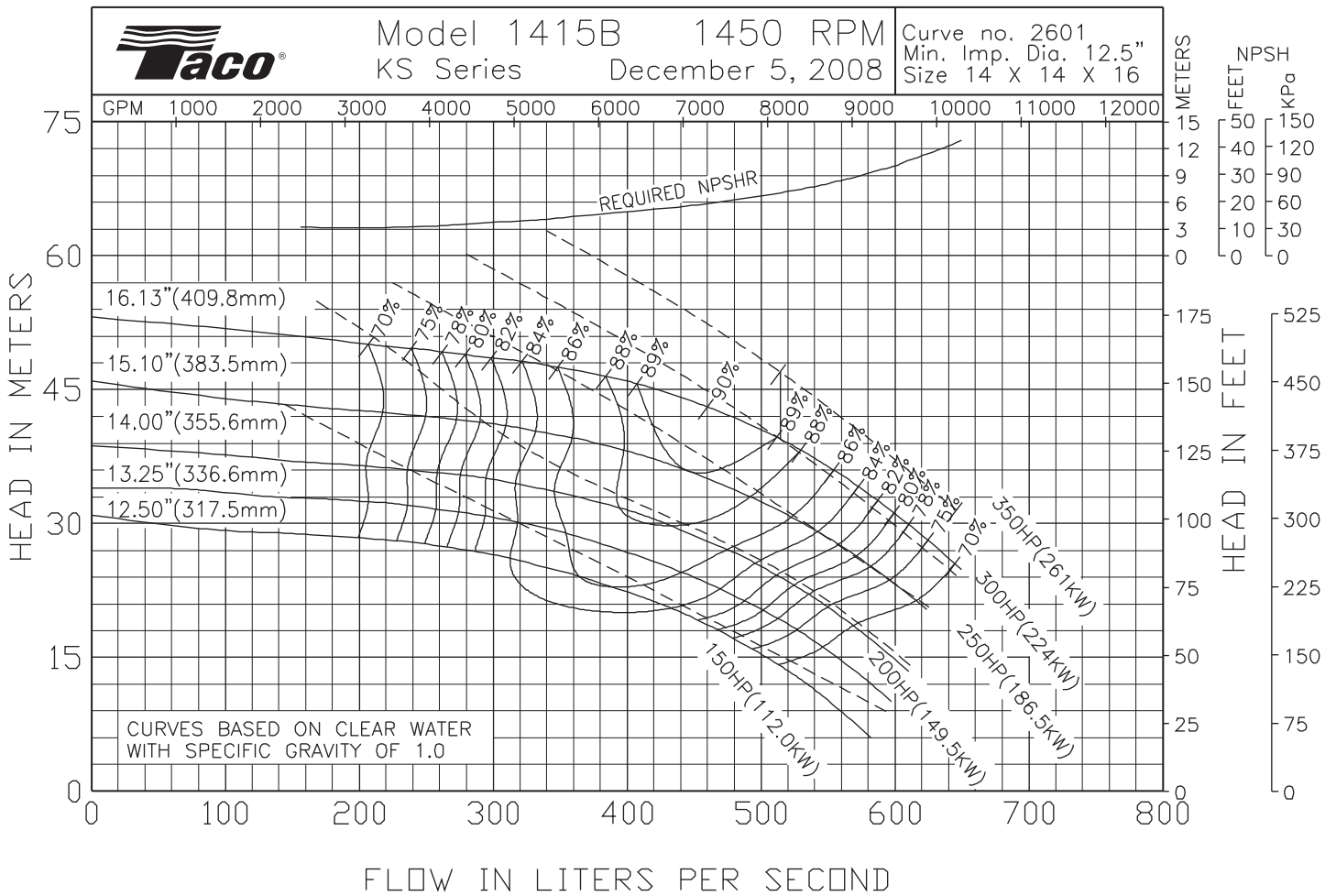
OPERATING SPECIFICATIONS

	Standard		Optional
Flange	ANSI Class 125	ANSI Class 250	
Pressure	175 PSIG* (1210 KPA)	300 PSIG** (2070 KPA)	CF
Temperature	250°F (120°C)	250°F (120°C)	CF

Motors: All NEMA Standard ODP Frame (CZ Shaft)
 * In accordance with ANSI Standard B16.1 Class 125
 ** In accordance with ANSI Standard B16.1 Class 250 Dim.

MAXIMUM ASSEMBLY WEIGHT

Motor Frame	Weight without Optional Stand Lbs (Kg)	Weight with Optional Stand Lbs (Kg)
444CZ - 445CZ	6469 (2934)	6780 (3075)
447CZ - 449CZ	6699 (3039)	7010 (3180)



Comments: