



Submittal Data Information

KS Series Vertical Split Coupled Pumps

301-1717

EFFECTIVE: MAY 31, 2017

SUPERSEDES: OCTOBER 5, 2015

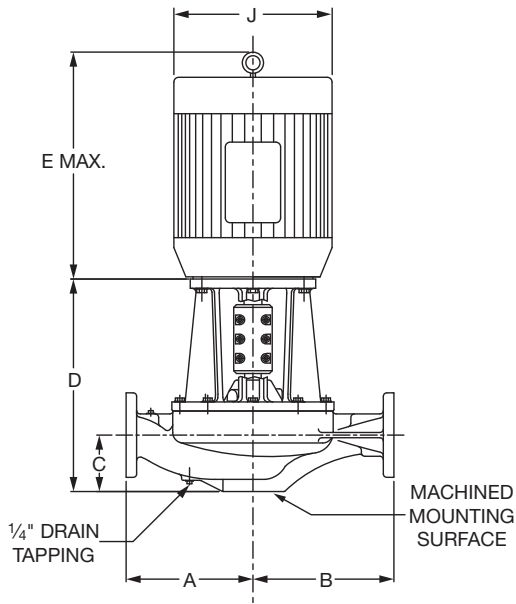
1760 RPM MODEL 1016

JOB _____ ENGINEER _____

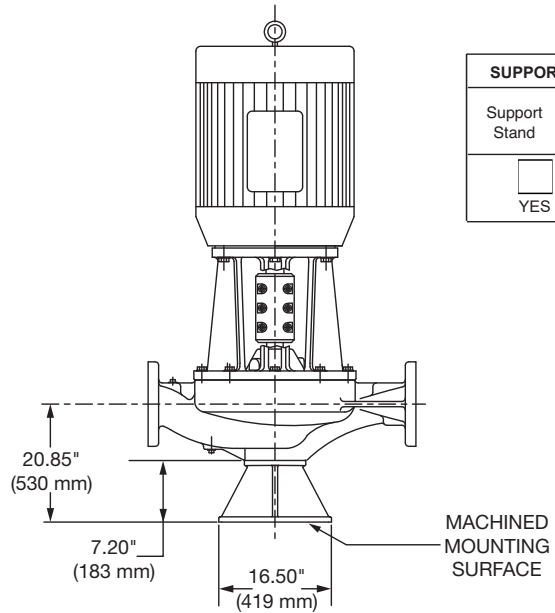
CONTRACTOR _____ REP. _____

ITEM NO.	MODEL NO.	IMPELLER DIA.	G.P.M.	HEAD/FT.	H.P.	ELEC. CHAR.
----------	-----------	---------------	--------	----------	------	-------------

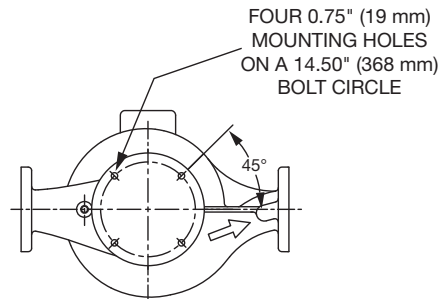
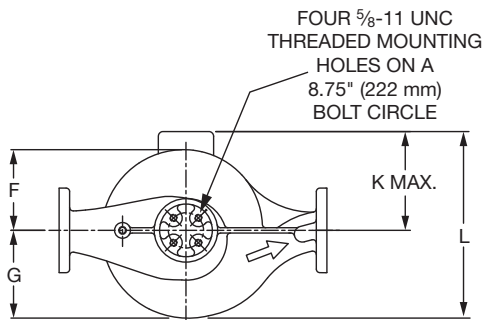
WEIGHT _____ PUMP/MOTOR _____



PUMP WITH OPTIONAL SUPPORT STAND



SUPPORT STAND OPTION	
Support Stand	Ductile Iron ASTM A536-84 Grade 65-45-12
<input type="checkbox"/>	<input type="checkbox"/>
YES	NO



DIMENSIONS

*A & B Dimensions apply for all pump sizes.

Model No.	Conn.	ODP/TEFC MOTOR FRAME	HP 1760 RPM	Flange Size ASA	A*	B*	C	D	E MAX	F	G	H	J DIA MAX	K MAX	L
1016	10 x 10 (254 x 254)	404/405CZ	100	10 (254)	26.08 (662) if ANSI Class 125	23.08 (586) if ANSI Class 125	13.65 (347)	33.48 (850)	38.53 (979)	13.28 (337)	18.69 (475)	0.25 (6)	21.42 (544)	18.65 (474)	37.34 (948)
		405CZ/444HP	125						43.49 (1105)				24.56 (624)	20.75 (527)	39.45 (1002)
		444/445HP	150						43.49 (1105)				24.56 (624)	20.75 (527)	39.45 (1002)
		445/447HP	200		52.50 (1333)	24.56 (624)			21.71 (551)				40.41 (1026)		
		445/447HP	250		52.50 (1333)	24.56 (624)			21.71 (551)				40.41 (1026)		
		449/449HP	300		52.50 (1333)	24.56 (624)			21.71 (551)				40.41 (1026)		
					26.77 (680) if ANSI Class 250	23.76 (604) if ANSI Class 250									

English dimensions are in inches. Metric dimensions are in millimeters. Metric data is presented in ().
Do not use for construction purposes unless certified.

MATERIALS OF CONSTRUCTION

	BRONZE FITTED		
	STANDARD PUMP CONSTRUCTION		OPTIONAL 125# or 250#
	125# Flange	250# Flange	
Casing	Cast Iron ASTM A48/ A48M-03 Class 30A	Ductile Iron ASTM A536-84 Grade 65-45-12	N/A
Impeller	Bronze ASTM B584 ALLOY C83600 or C84400	Bronze ASTM B584 ALLOY C83600 or C84400	N/A
Wear Ring	N/A	N/A	Bronze ASTM B584-98A C92200
Shaft	Stainless Steel TYPE 416"™" or 410"™" ASTM A582	Stainless Steel TYPE 416"™" or 410"™" ASTM A582	N/A
Coupling	Aluminum Alloy 6061-T6	Aluminum Alloy 6061-T6	N/A
Mechanical Seal	Ceramic/EPT	Ceramic/EPT	Tungsten Carbide/EPT or Silicon- Carbide/EPT
Seal Flush Line	Copper & Brass C3600	Copper & Brass C3600	N/A

OPERATING SPECIFICATIONS

0	Standard		Optional
Flange	ANSI Class 125	ANSI Class 250	
Pressure	175 PSIG* (1210 KPA)	300 PSIG** (2070 KPA)	CF
Temperature	250°F (120°C)	250°F (120°C)	CF

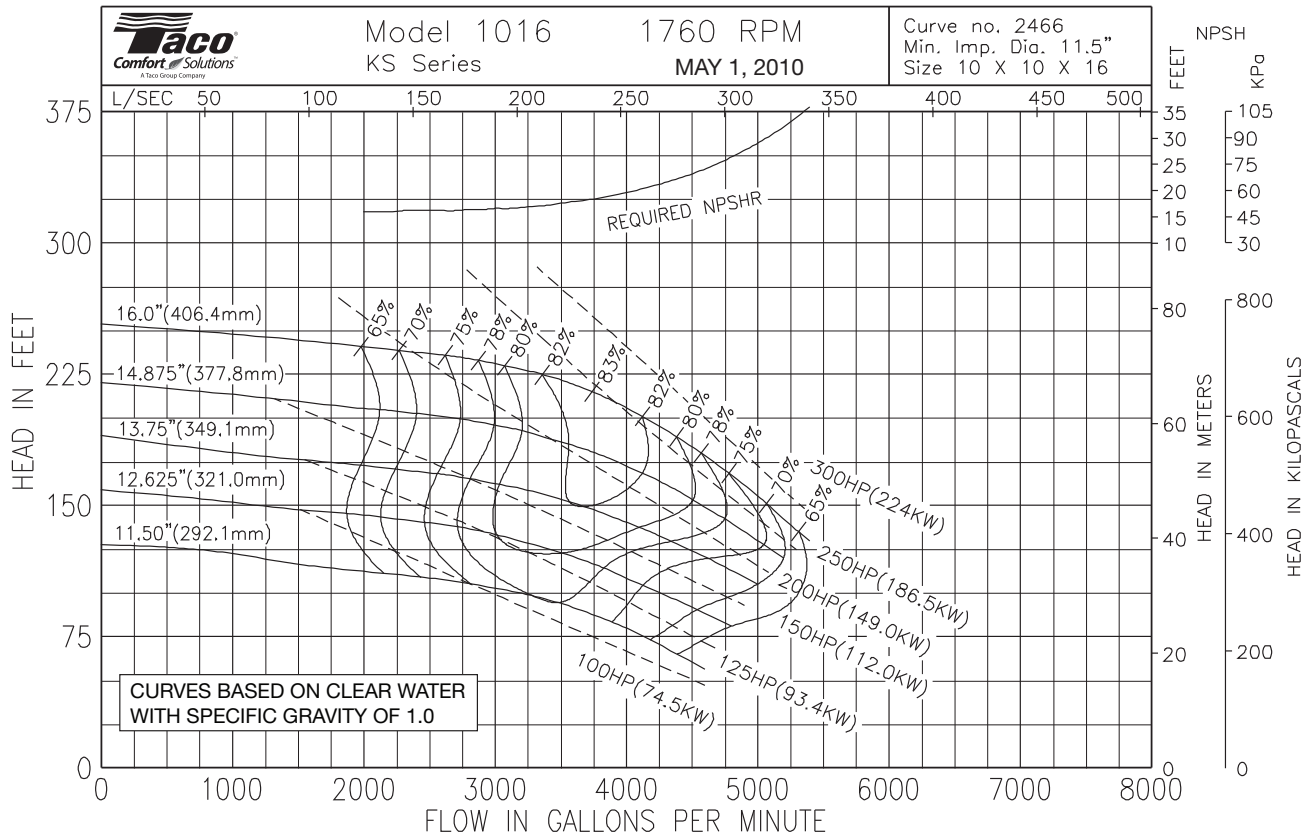
Motors: All NEMA Standard ODP Frame (CZ Shaft)
 * In accordance with ANSI Standard B16.1 Class 125
 ** In accordance with ANSI Standard B16.1 Class 250 Dim.

MAXIMUM ASSEMBLY WEIGHT

Motor Frame	Weight without Optional Stand Lbs (Kg)	Weight with Optional Stand Lbs (Kg)
404CZ - 405CZ	2969 (1347)	3069 (1392)
444HP - 445HP	3462 (1570)	3562 (1616)
447HP - 449HP	4374 (1984)	4474 (2029)

N/A = Not available

Revised: 05/31/2017



MS 2-27-08 PC-2466 RevA ECN35490
 SUPERSEDES PREVIOUS PC-2440, Rev- 9-25-2007

Comments: _____

Taco Comfort Solutions A Taco Family Company
 Taco, Inc., 1160 Cranston Street, Cranston, RI 02920 | Tel: (401) 942-8000 | FAX: (401) 942-2360
 Taco (Canada), Ltd., 8450 Lawson Road, Suite #3, Milton, Ontario L9T 0J8 | Tel: (905) 564-9422 | FAX: (905) 564-9436
 Visit our web site: www.TacoComfort.com | Printed in USA | ©2017 Taco, Inc.

EFFECTIVE: MAY 31, 2017

SUPERSEDES: APRIL 21, 2015

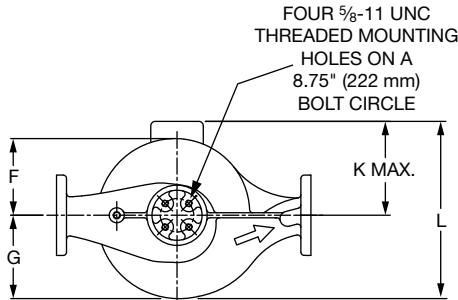
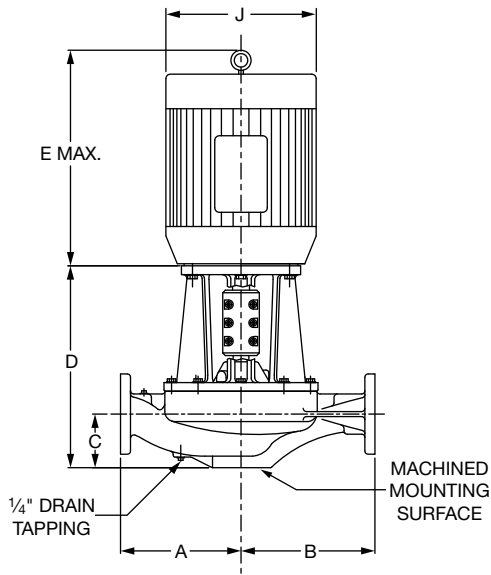
1450 RPM MODEL 1016

JOB _____ ENGINEER _____

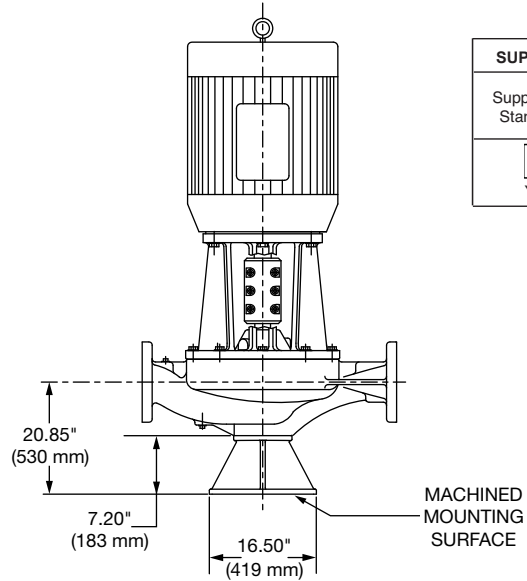
CONTRACTOR _____ REP. _____

ITEM NO.	MODEL NO.	IMPELLER DIA.	G.P.M.	HEAD/FT.	H.P.	ELEC. CHAR.

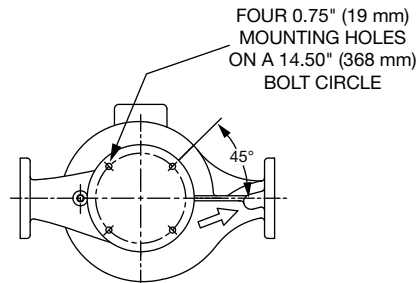
WEIGHT _____ PUMP/MOTOR _____



PUMP WITH OPTIONAL SUPPORT STAND



SUPPORT STAND OPTION	
Support Stand	Ductile Iron ASTM A536-84 Grade 65-45-12
<input type="checkbox"/>	<input type="checkbox"/>
YES	NO



DIMENSIONS

*A & B Dimensions apply for all pump sizes.

Model No.	Conn.	Motor Frame	HP (KW)	1450 RPM	Flange Size ASA	A*	B*	C	D	E MAX	F	G	H	J DIA MAX	K MAX	L
1016	10 x 10 (254 x 254)	364CZ	60	(44.7)	10 (254)	26.08 (662) if ANSI Class 125	23.08 (586) if ANSI Class 125	13.65	33.48	34.40 (874)	13.28	18.69	0.25	19.25 (489)	14.97 (380)	33.67 (855)
		365CZ	75	(56.0)						35.29 (896)				19.25 (489)	14.97 (380)	33.67 (855)
		405CZ	100	(74.5)						38.53 (979)				21.42 (544)	18.65 (474)	37.34 (948)
		444HP	125	(93.2)		43.49 (1105)	24.56 (624)			20.75 (527)				39.45 (1002)		
		445HP	150	(112.0)		43.49 (1105)	24.56 (624)			20.75 (527)				39.45 (1002)		
		447HP	200	(149.2)		52.50 (1333)	24.56 (624)			21.71 (551)				40.41 (1026)		

English dimensions are in inches. Metric dimensions are in millimeters. Metric data is presented in ().
Do not use for construction purposes unless certified.

MATERIALS OF CONSTRUCTION

	BRONZE FITTED		
	STANDARD PUMP CONSTRUCTION		OPTIONAL
	125# Flange	250# Flange	125# or 250#
Casing	Cast Iron ASTM A48/ A48M-03 Class 30A	Ductile Iron ASTM A536-84 Grade 65-45-12	N/A
Impeller	Bronze ASTM B584 ALLOY C83600 or C84400	Bronze ASTM B584 ALLOY C83600 or C84400	N/A
Wear Ring	N/A	N/A	Bronze ASTM B584-98A C92200
Shaft	Stainless Steel TYPE 416"Ti" or 410"Ti" ASTM A582	Stainless Steel TYPE 416"Ti" or 410"Ti" ASTM A582	N/A
Coupling	Aluminum Alloy 6061-T6	Aluminum Alloy 6061-T6	N/A
Mechanical Seal	Ceramic/EPT	Ceramic/EPT	Tungsten Carbide/EPT or Silicon- Carbide/EPT
Seal Flush Line	Copper & Brass C3600	Copper & Brass C3600	N/A

N/A = Not available

Revised: 05/31/2017

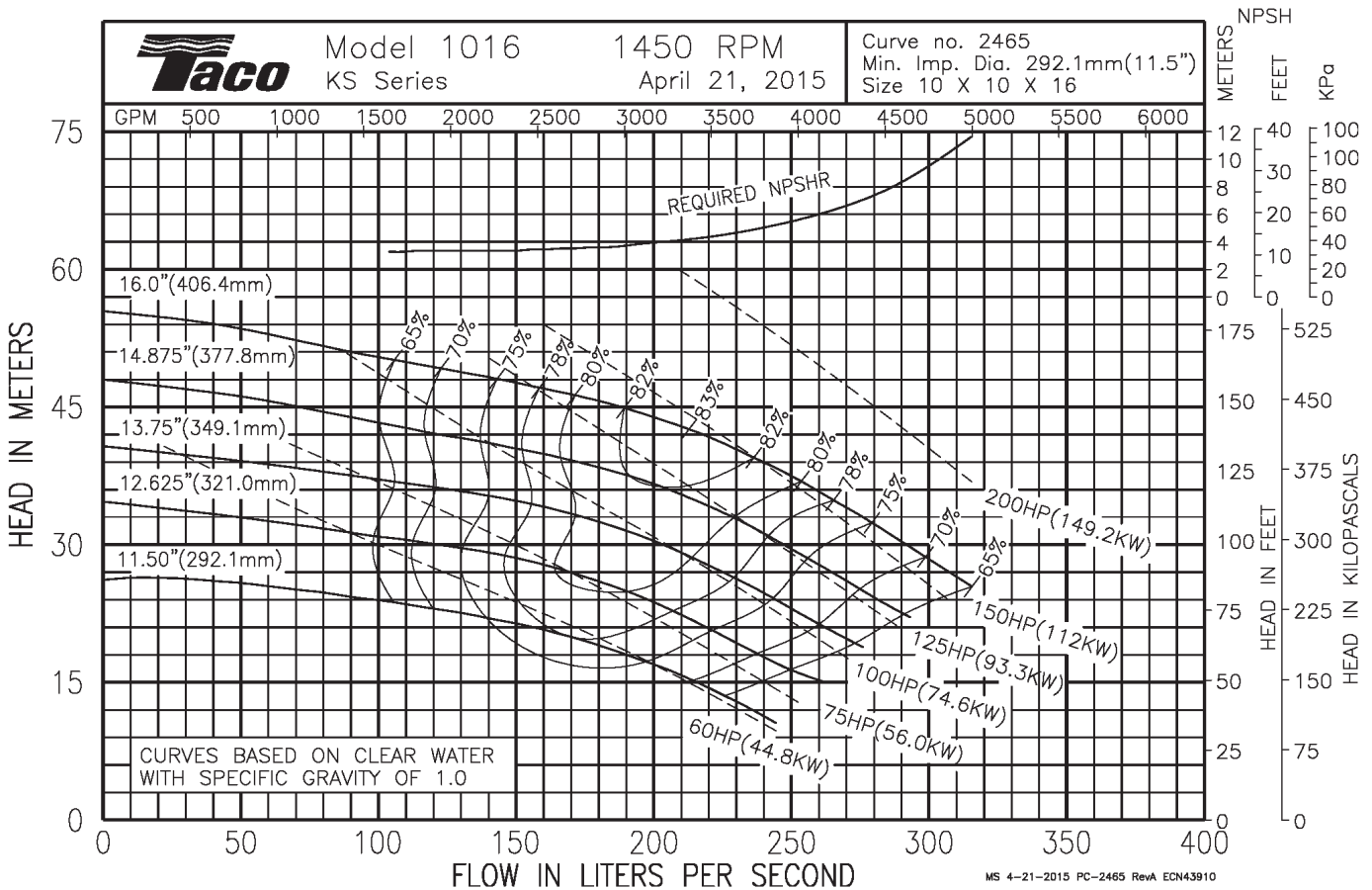
OPERATING SPECIFICATIONS

	Standard		Optional
Flange	ANSI Class 125	ANSI Class 250	
Pressure	175 PSIG* (1210 KPA)	300 PSIG** (2070 KPA)	CF
Temperature	250°F (120°C)	250°F (120°C)	CF

Motors: All NEMA Standard ODP Frame (CZ Shaft)
 * In accordance with ANSI Standard B16.1 Class 125
 ** In accordance with ANSI Standard B16.1 Class 250 Dim.

MAXIMUM ASSEMBLY WEIGHT

Motor Frame	Weight without Optional Stand Lbs (Kg)	Weight with Optional Stand Lbs (Kg)
364CZ - 365CZ	2960 (1343)	3060 (1388)
404CZ - 405CZ	3266 (1481)	3366 (1527)
444CZ - 445CZ	3808 (1727)	3908 (1773)
447CZ - 449CZ	4811 (2182)	4911 (2228)



Comments:

Taco Comfort Solutions A Taco Family Company

Taco, Inc., 1160 Cranston Street, Cranston, RI 02920 | Tel: (401) 942-8000 | FAX: (401) 942-2360

Taco (Canada), Ltd., 8450 Lawson Road, Suite #3, Milton, Ontario L9T 0J8 | Tel: (905) 564-9422 | FAX: (905) 564-9436

Visit our web site: www.TacoComfort.com | Printed in USA | ©2017 Taco, Inc.





Submittal Data Information

KS Series Vertical Split Coupled Pumps

301-1716

EFFECTIVE: MAY 31, 2017

SUPERSEDES: JANUARY 8, 2010

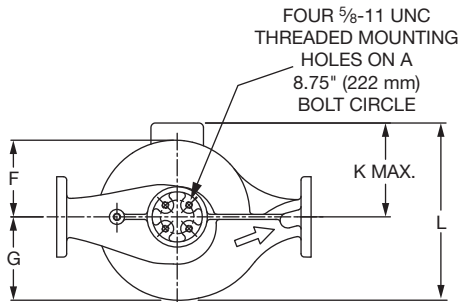
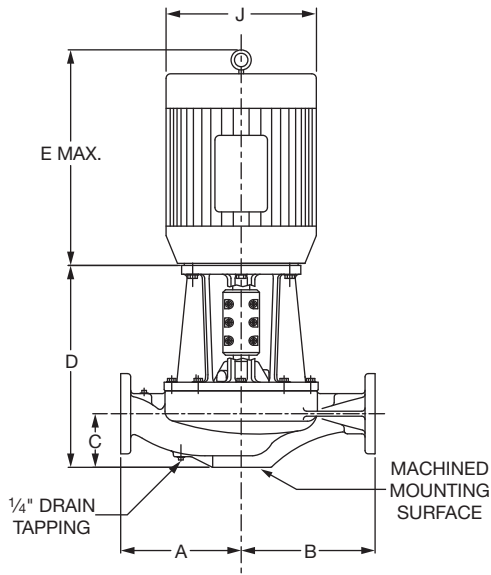
1160 RPM MODEL 1016

JOB _____ ENGINEER _____

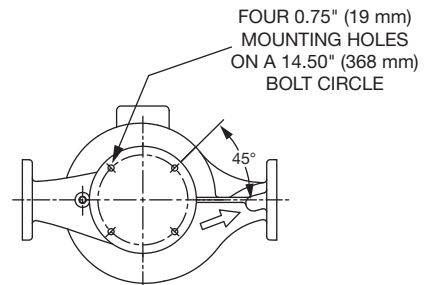
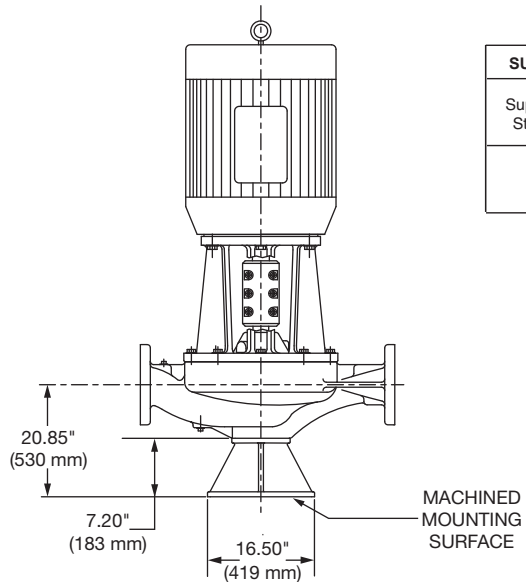
CONTRACTOR _____ REP. _____

ITEM NO.	MODEL NO.	IMPELLER DIA.	G.P.M.	HEAD/FT.	H.P.	ELEC. CHAR.

WEIGHT _____ PUMP/MOTOR _____



PUMP WITH OPTIONAL SUPPORT STAND



SUPPORT STAND OPTION	
Support Stand	Ductile Iron ASTM A536-84 Grade 65-45-12
<input type="checkbox"/> YES	<input type="checkbox"/> NO

DIMENSIONS

*A & B Dimensions apply for all pump sizes.

Model No.	Conn.	Motor Frame	HP 1160 RPM	Flange Size ASA	A*	B*	C	D	E MAX	F	G	H	J DIA MAX	K MAX	L
1016	10 x 10 (254 x 254)	326CZ	30	10 (254)	26.08 (662) if ANSI Class 125	23.08 (586) if ANSI Class 125	13.65 (347)	33.48 (850)	32.53 (826)	13.28 (337)	18.69 (475)	0.25 (6)	17.35 (441)	14.12 (359)	33.82 (859)
		364CZ	40						34.40 (874)				19.25 (489)	14.97 (380)	33.67 (855)
		365CZ	50						35.29 (896)				19.25 (489)	14.97 (380)	33.67 (855)
		404CZ	60		38.53 (979)	21.42 (544)			18.65 (474)				37.34 (948)		
		405CZ	75		38.53 (979)	21.42 (544)			18.65 (474)				37.34 (948)		
		444HP	100		43.49 (1105)	24.56 (624)			20.75 (527)				39.45 (1002)		

English dimensions are in inches. Metric dimensions are in millimeters. Metric data is presented in ().
Do not use for construction purposes unless certified.

MATERIALS OF CONSTRUCTION

	BRONZE FITTED		
	STANDARD PUMP CONSTRUCTION		OPTIONAL 125# or 250#
	125# Flange	250# Flange	
Casing	Cast Iron ASTM A48/ A48M-03 Class 30A	Ductile Iron ASTM A536-84 Grade 65-45-12	N/A
Impeller	Bronze ASTM B584 ALLOY C83600 or C84400	Bronze ASTM B584 ALLOY C83600 or C84400	N/A
Wear Ring	N/A	N/A	Bronze ASTM B584-98A C92200
Shaft	Stainless Steel TYPE 416"™" or 410"™" ASTM A582	Stainless Steel TYPE 416"™" or 410"™" ASTM A582	N/A
Coupling	Aluminum Alloy 6061-T6	Aluminum Alloy 6061-T6	N/A
Mechanical Seal	Ceramic/EPT	Ceramic/EPT	Tungsten Carbide/EPT or Silicon- Carbide/EPT
Seal Flush Line	Copper & Brass C3600	Copper & Brass C3600	N/A

N/A = Not available

Revised: 05/31/2017

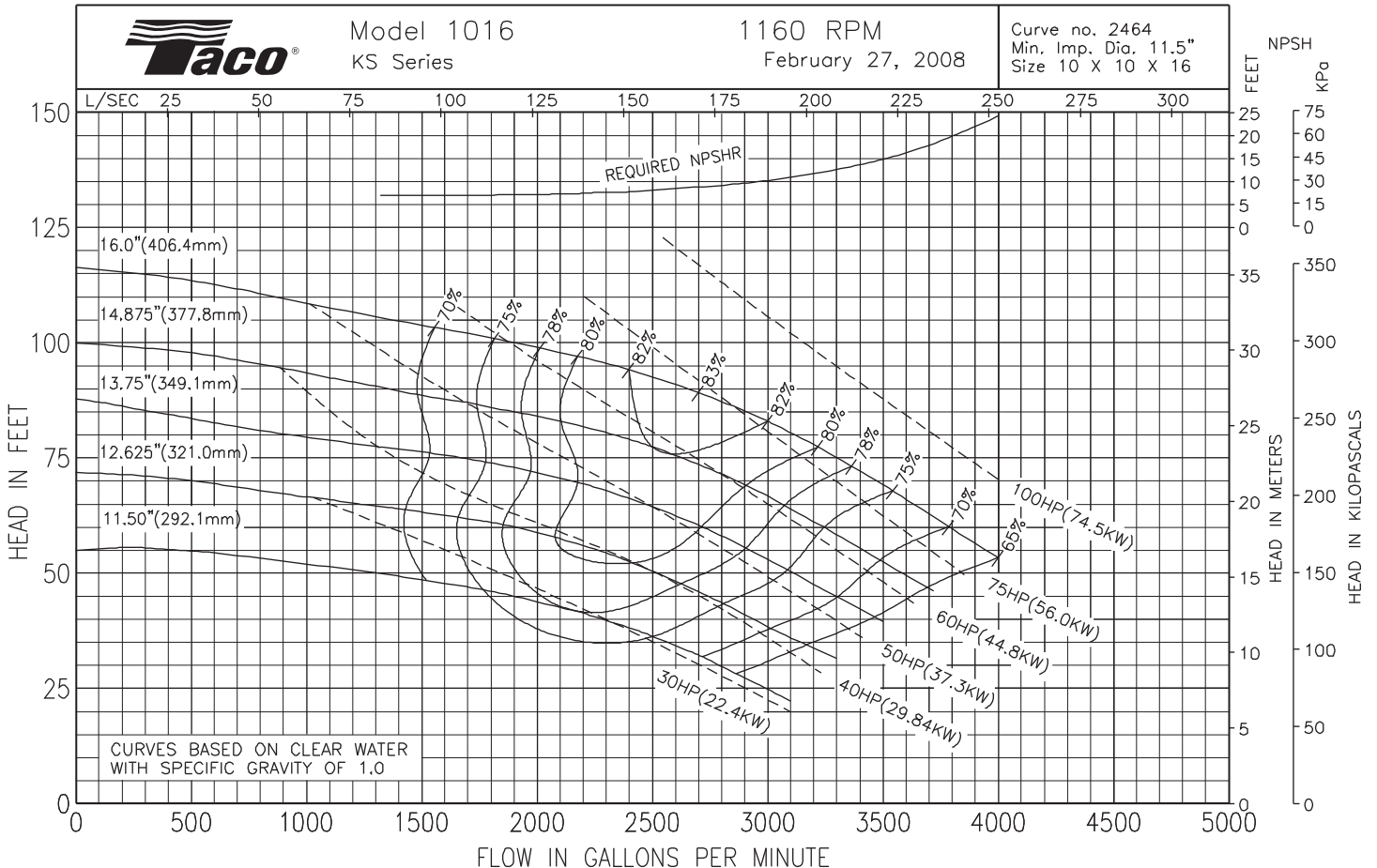
OPERATING SPECIFICATIONS

	Standard		Optional
Flange	ANSI Class 125	ANSI Class 250	
Pressure	175 PSIG* (1210 KPA)	300 PSIG** (2070 KPA)	CF
Temperature	250°F (120°C)	250°F (120°C)	CF

Motors: All NEMA Standard ODP Frame (CZ Shaft)
 * In accordance with ANSI Standard B16.1 Class 125
 ** In accordance with ANSI Standard B16.1 Class 250 Dim.

MAXIMUM ASSEMBLY WEIGHT

Motor Frame	Weight without Optional Stand Lbs (Kg)	Weight with Optional Stand Lbs (Kg)
324CZ - 326CZ	2372 (1076)	2472 (1121)
364CZ - 365CZ	2572 (1167)	2672 (1212)
404CZ - 405CZ	2893 (1312)	2993 (1358)
444HP - 445HP	3436 (1559)	3536 (1604)



Comments: