

# Fanless Combustion Blower

## SPECIFICATIONS

- C-Frame motor
- Aluminized steel housing and impeller
- Available in standard housing and new small 80 housing size
- Patented design

## FEATURES

- Clinch Seam housing
- Covered motor with cooling air ports
- Vacuum tap for pressure switch
- Available with or without 4" round offset exhaust
- Industry standard mounting pattern available
- Stainless steel motor shaft
- Mounting seal preinstalled

## BENEFITS

- Improved sound quality
- Improved safety – no rotating external fans
- Split impeller design provides air over motor and pulls heat from vestibule area of furnace
- 4 point symmetrical mounting for optimal venting choices

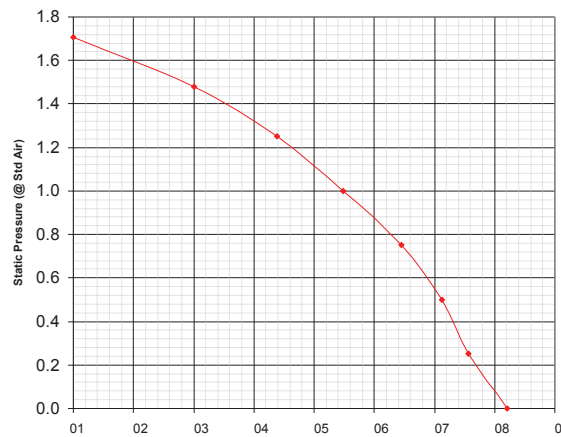
## TARGETED APPLICATIONS

- 80+ Single stage and 2-stage residential indoor furnaces
- Outdoor residential package units

## AVAILABILITY

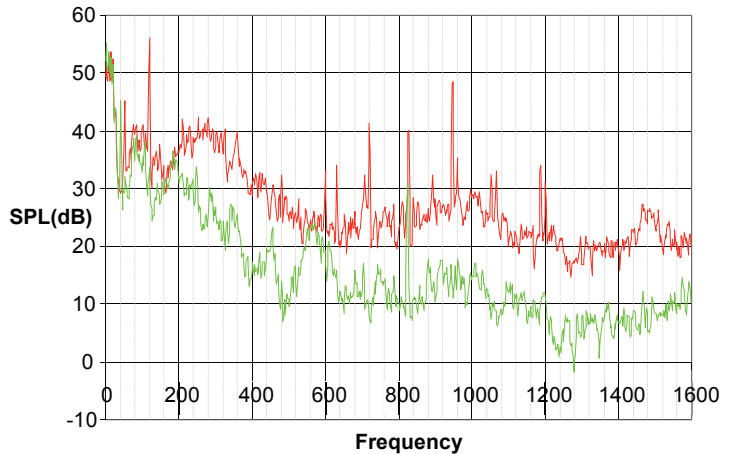
Currently in production

## TYPICAL PERFORMANCE



## SOUND COMPARISON

- ∞ Red = conventional combustion blower
- ∞ Green = Fanless combustion blower



Cassville, MO 65625  
 PH: 417-875-7163  
 email: sales@fasco.com

fasco.com

©2013 Regal-Beloit Corporation 1/2013

A Regal Brand

**REGAL**