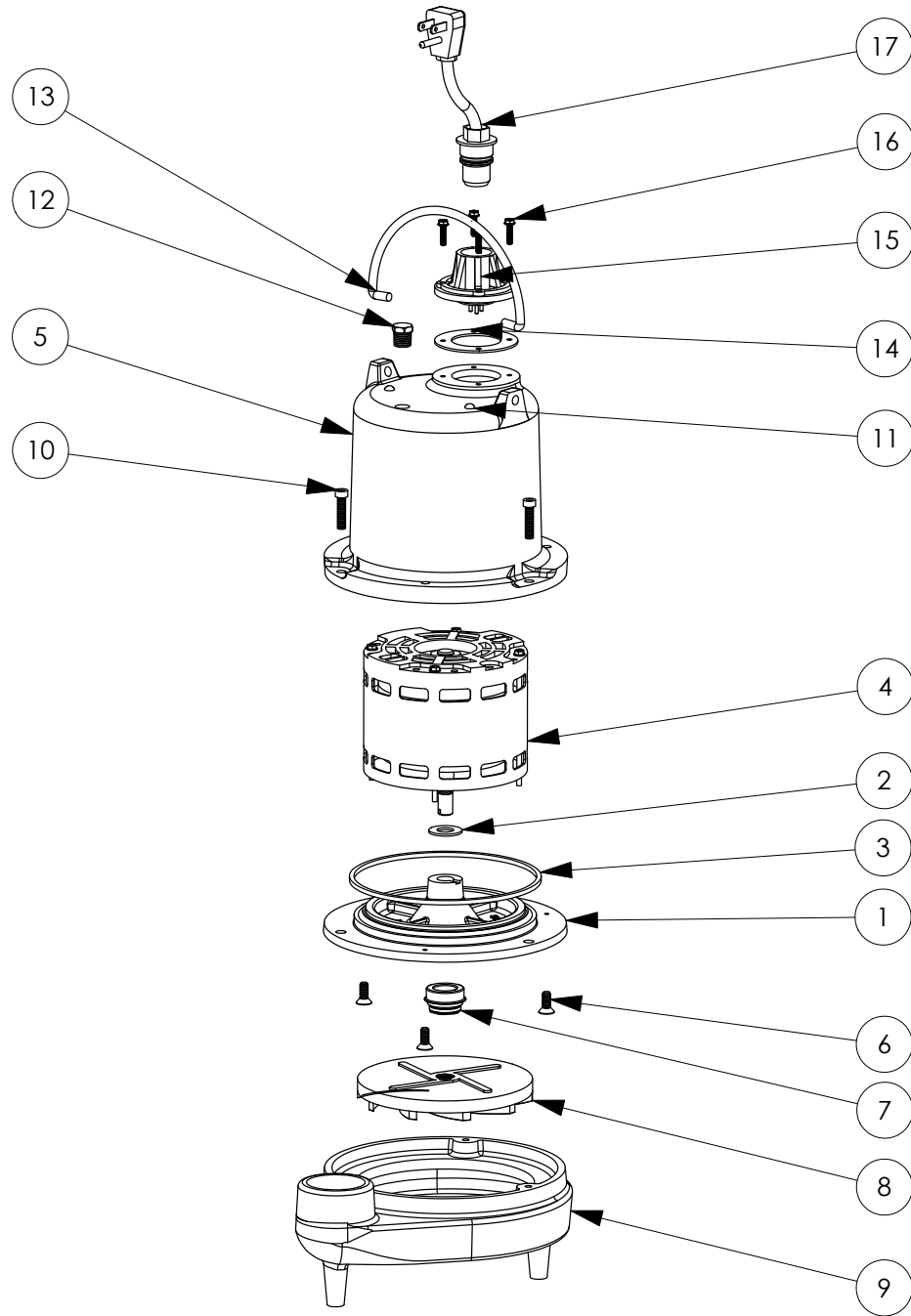


FL32M-2 (B20)



**FL32M-2****FL32M-2 (B20)**

| #  | PART #  | DESCRIPTION                         | QTY | Note |
|----|---------|-------------------------------------|-----|------|
| 1  | 5052000 | MOTOR SUPPORT PLATE                 | 1   |      |
| 2  | 5395000 | THRUST WASHER                       | 1   |      |
| 3  | 5066000 | SEALRING, MOTOR COVER, #254S        | 1   | [1]  |
| 4  | 5391000 | MOTOR ASSEMBLY, .5HP 230V           | 1   |      |
| 5  | 53500AR | MOTOR CAP                           | 1   |      |
| 6  | 8018000 | 1/4-20 x 5/8 SLOTTED FLAT HEAD BOLT | 3   |      |
| 7  | 50980A0 | 1/2 INCH UNITIZED SEAL              | 1   | [1]  |
| 8  | K001036 | IMPELLER                            | 1   |      |
| 9  | 500100R | HOUSING, VOLUTE                     | 1   |      |
| 10 | 8091000 | 1/4-20 x 1 HEX SOCKET HEAD BOLT     | 3   |      |
| 11 | 8033000 | #8 x 1/4 STAINLESS STEEL SCREW      | 2   |      |
| 12 | 5071000 | BRASS OIL PLUG                      | 1   |      |
| 13 | K001095 | STAINLESS STEEL HANDLE              | 1   |      |
| 14 | 5060000 | CORD PLATE GASKET                   | 1   |      |
| 15 | 5014000 | CORD PLATE                          | 1   |      |
| 16 | 8064000 | #8-32 x 5/8 HEX WASHER HEAD SCREW   | 4   |      |
| 17 | K001059 | POWER CORD, 230V, 25 FOOT CORD      | 1   |      |

**PART NOTES:**

[1] - Part requires factory authorized service. Contact Liberty Pumps at 1-800-543-2550