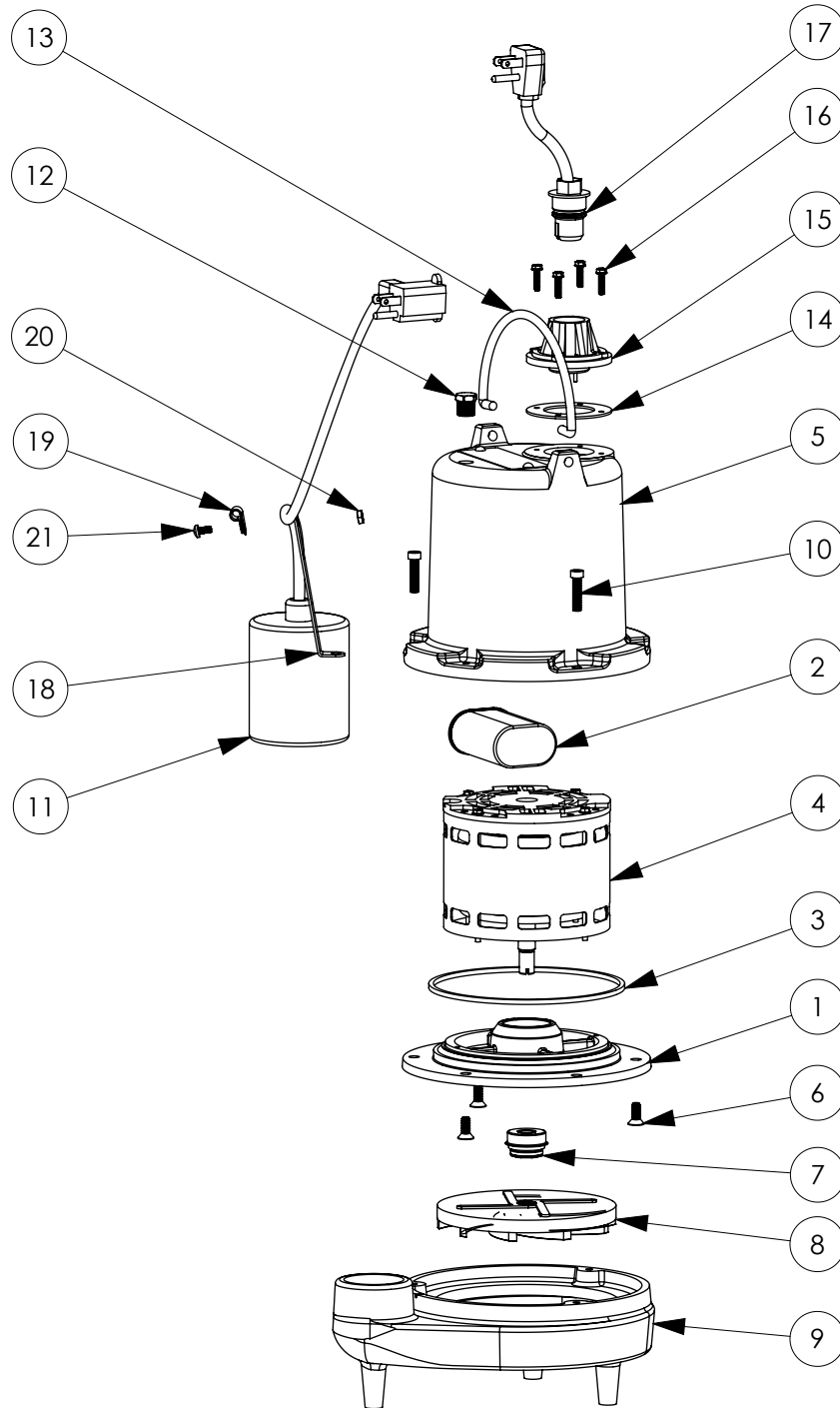


FL31A-2 (B41)



**FL31A-2****FL31A-2 (B41)**

| #  | PART #  | DESCRIPTION                         | QTY | Note |
|----|---------|-------------------------------------|-----|------|
| 1  | 509200R | MOTOR SUPPORT PLATE                 | 1   |      |
| 2  | 51930D0 | CAPACITOR                           | 1   |      |
| 3  | 5066000 | SEALRING, MOTOR COVER, #254S        | 1   | [1]  |
| 4  | 51972A0 | MOTOR 1/2HP WITH BALL BEARING       | 1   | [1]  |
| 5  | 545000R | MOTOR COVER                         | 1   |      |
| 6  | 8018000 | 1/4-20 x 5/8 SLOTTED FLAT HEAD BOLT | 3   |      |
| 7  | 50980A0 | 1/2 INCH UNITIZED SEAL              | 1   | [1]  |
| 8  | K001169 | IMPELLER                            | 1   |      |
| 9  | 500100R | HOUSING, VOLUTE                     | 1   |      |
| 10 | 8091000 | 1/4-20 x 1 HEX SOCKET HEAD BOLT     | 3   |      |
| 11 | K001004 | 61130B0, 25' PUMP SWITCH KIT        | 1   |      |
| 12 | 50710A0 | PIPE PLUG, 1/4" HEX HD BRASS NPTF   | 1   |      |
| 13 | K001095 | STAINLESS STEEL HANDLE              | 1   |      |
| 14 | 5060000 | CORD PLATE GASKET                   | 1   |      |
| 15 | 5014000 | CORD PLATE                          | 1   |      |
| 16 | 8064000 | #8-32 x 5/8 HEX WASHER HEAD SCREW   | 4   |      |
| 17 | K001008 | POWER CORD, 115V, 25 FOOT CORD      | 1   |      |
| 18 | 5070000 | FLOAT SWITCH SUPPORT                | 1   |      |
| 19 | 8014000 | CABLE CLAMP                         | 1   |      |
| 20 | 8002000 | #10-24 STAINLESS STEEL HEX          | 1   |      |
| 21 | 8082000 | #10-24 x 3/8 EPOXY LOCK SCREW       | 1   |      |

**PART NOTES:**

[1] - Part requires factory authorized service. Contact Liberty Pumps at 1-800-543-2550