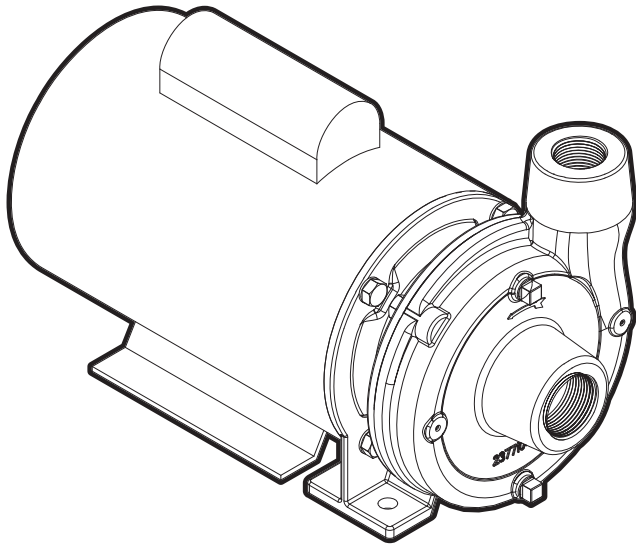


Close-Coupled FAC 1/2 - 2 hp

BOOK: CCF-010

DATE: Mar. 1, 2012



Features:

- **Volute:** Cast iron, can be rotated for ease of installation. Tapped openings provided for draining.
- **Impeller:** Enclosed design for high efficiency. Cast iron construction.
- **Mechanical Seal:** GL-SiC/GL-SiC x Viton® elastomers and 300 series stainless components.
- **Motor:** 3600 rpm, 56J, C-Face, open-drip-proof. Designed for continuous operation.
- **Mounting:** Can be mounted in vertical or horizontal position.

Applications:

- Water Circulation
- Booster Service
- Liquid Transfer
- Spraying Systems
- Jockey Pump
- General Service

Specifications:

Capacities: to 60 gpm

Heads: to 130 feet

Working Pressure: 75 psi max

Temperature: 212 °F max

Rotation: clockwise viewed from motor end

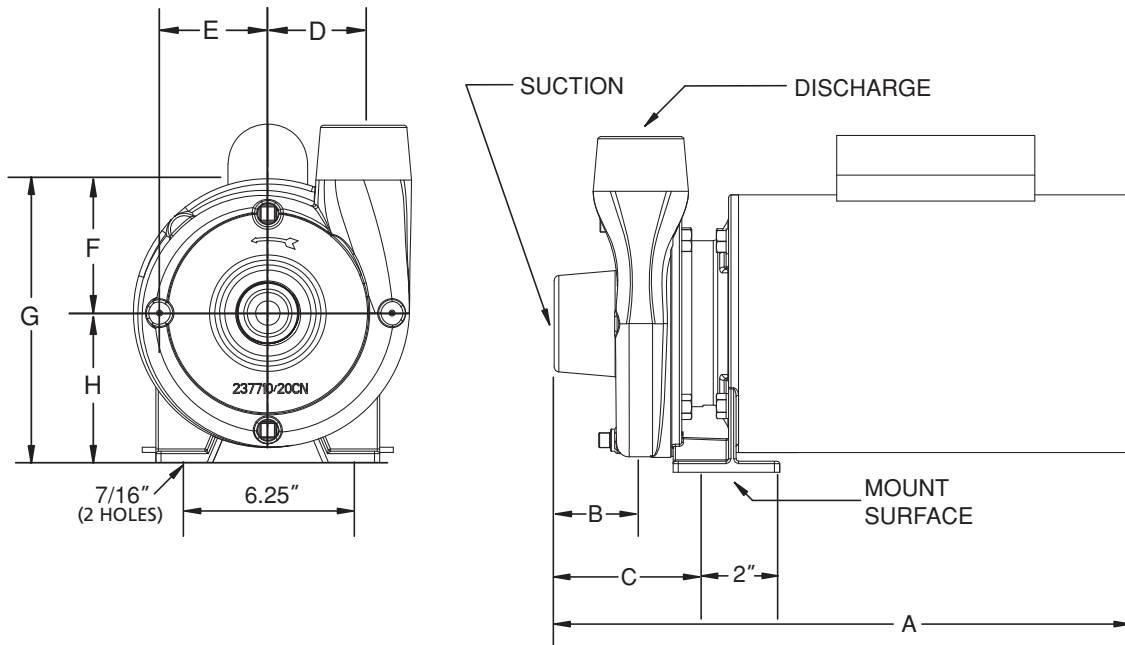
Pipe Connections: NPT

HP	Discharge	Suction
1/2	1"	1-1/4"
3/4 - 1	1-1/4"	1-1/2"
1-1/2 - 2	1-1/2"	2"

Viton® is a registered trademark of E. I. du Pont de Nemours and Company.

Close-Coupled FAC 1/2 - 2 hp

Dimensional Drawings:



Dimensions:

HP	Suct. (NPT)	Disch. (NPT)	A	B	C	D	E	F	G	H
1/2	1-1/4"	1"	12.5"	1.75"	3.25"	2.375"	3.375"	4.25"	8"	3.75"
3/4	1-1/2"	1-1/4"	14"	1.75"	3.25"	2.375"	3.375"	4.25"	8"	3.75"
1	1-1/2"	1-1/4"	14.25"	1.75"	3.25"	2.375"	3.375"	4.25"	8"	3.75"
1-1/2	2"	1-1/2"	15.125"	1.875"	3.5"	2.625"	3.75"	4"	8.75"	4.75"
2	2"	1-1/2"	15.625"	1.875"	3.5"	2.625"	3.75"	4"	8.75"	4.75"

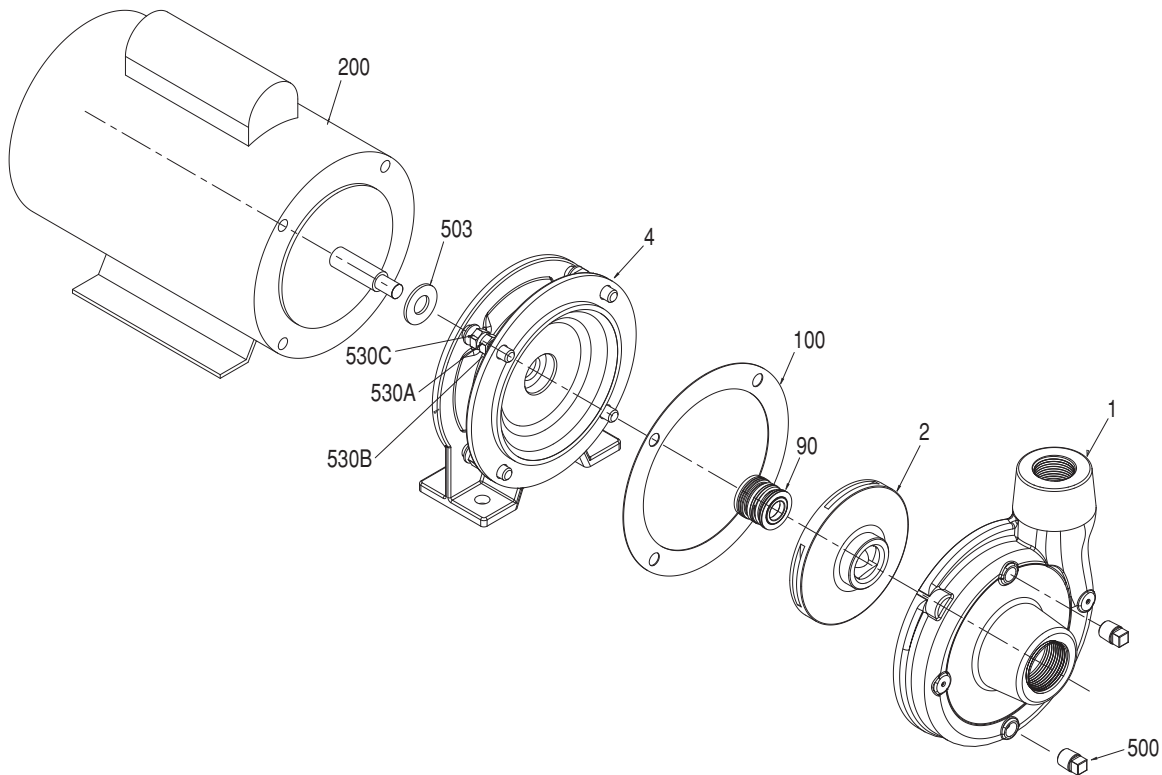
Note: Dimensions are for estimating purposes only. All dimensions in inches.

Ordering Information:

Close-Coupled FAC 1/2 - 2 HP						
Pump Size (Dis x Suc - Imp)	HP	Phase	Voltage	Model Description	Order Number	Weight
1 x 1-1/4	0.5	1	115/230	FAC-50S	90210005	32
		3	208-230/460	FAC-50T	90213005	
1-1/4 x 1-1/2	0.75	1	115/230	FAC-75S	90210007	36
		3	208-230/460	FAC-75T	90213007	
1-1/4 x 1-1/2	1	1	115/230	FAC-100S	90210010	39
		3	208-230/460	FAC-100T	90213010	
1-1/2 x 2	1.5	1	115/230	FAC-150S	90210015	47
		3	208-230/460	FAC-150T	90213015	
1-1/2 x 2	2	1	230	FAC-200S	90210020	53
		3	208-230/460	FAC-200T	90213020	

Note: All weight in pounds.

Close-Coupled FAC 1/2 - 2 hp



Materials and Parts:

Fig No.	Part Description	Part Number					Materials of Construction
		FAC-50	FAC-75	FAC-100	FAC-150	FAC-200	
1	Pump Case	305453001	305453015		305453016		Cast Iron, ASTM-A48 CL30
2	Impeller	305453017	305453018	305453019	305453020	305453021	Cast Iron, ASTM-A48 CL30
4	Seal Plate	305453022		305453023			Cast Iron, ASTM-A48 CL30
90	Mechanical Shaft Seal	305463029					GL-SiC/GL-SiCxViton®-SS
100	Case Gasket	305453007		305453024			EPDM
200	Motor (56-J)	See Motor Section					Misc.
500	Pipe Plug (2-pack)	305463020					CAD Plated Steel
503	Flinger	305453005					Neoprene
530A	Hex Bolt - Volute/Bracket (8-pack)	305463030					Zinc Plated Steel
530B	Washer	305453006					Aluminum
530C	Hex Bolt - Bracket	305463030					Zinc Plated Steel

Viton® is a registered trademark of E. I. du Pont de Nemours and Company.

Close-Coupled FAC 1/2 - 2 hp

Performance Curve:

3600
Nominal

