

Leading The Flow. TACO.

CE Close-Coupled End Suction Pumps



Quiet, dependable power and proven performance.

CE Series Pumps meet the latest standards for hydraulic performance and dimensional characteristics. Each is backed by Taco, Inc., a worldwide leader in heating and cooling equipment for more than seven decades.

Parts standardization and interchangeability for the CE Pump line results in reduced parts inventories and lower costs for multiple pump installations. An easy-to-replace, slip-on shaft sleeve facilitates seal maintenance in the field and lowers maintenance costs. The exclusive dry shaft design protects the pump shaft by eliminating contact between the shaft and the circulating fluid. Corrosion-resistant shaft materials are generally not required. CE Pumps also feature flush seal line taps, allowing the installation of a filter to protect the seal from non-condensable particles present in open systems. In addition, pressure tapings on suction and discharge flanges promote easy verification of pump performance.

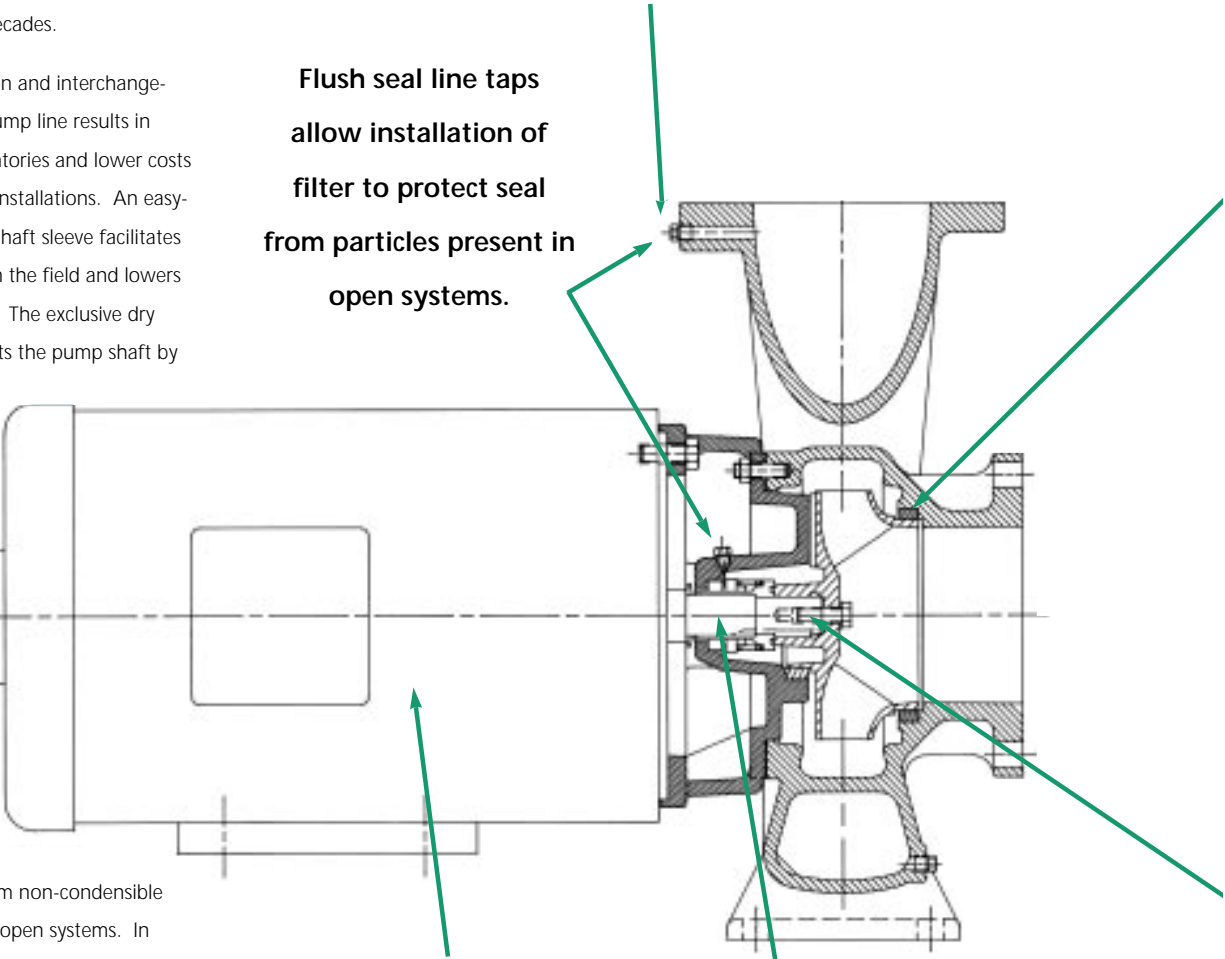
Taco CE Pumps are ideally suited for a variety of applications, including heating, air conditioning, pressure boosting, cooling water transfer, and water supply.

Pressure tapings on suction and discharge flanges promote easy verification of pump performance.

Flush seal line taps allow installation of filter to protect seal from particles present in open systems.

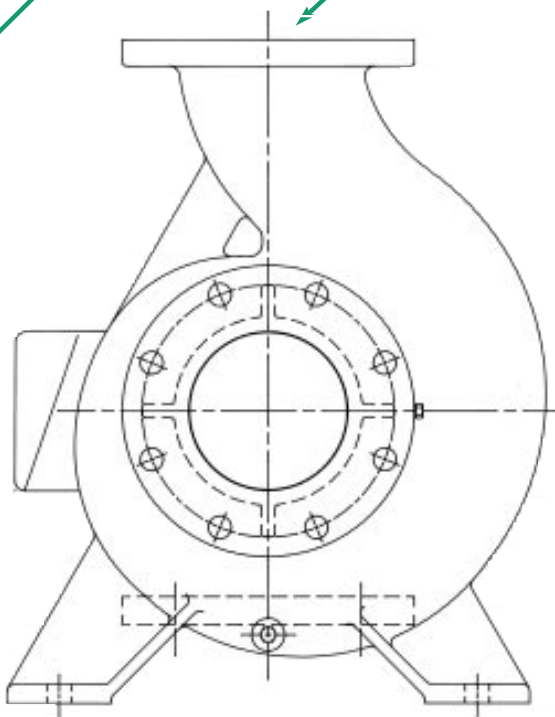
Rear pullout design allows pump to be serviced without disturbing the system piping.

Easy-to-replace slip-on shaft sleeve facilitates seal maintenance in the field and lowers long-term maintenance costs.



Low-cost, replaceable wear rings protect casing during normal operation.

Top center line discharge design simplifies piping layouts, reduces piping strain, and makes the pump self-venting.



DRY SHAFT DESIGN

- Ensures shaft is never exposed to the system fluid.
- Eliminates need for expensive corrosion-resistant shaft.
- Simplifies sleeve and seal removal/reassembly.

Cast iron casing with integrally cast feet enables pump to be bolted to the pad for sturdier installation and still allow back pull out without disturbing the piping.

TYPICAL SPECIFICATION

Furnish and install centrifugal end suction single stage pump(s) with capacities and characteristics as shown on the plans. Pumps shall be Taco model CE or approved equal.

Pump volute or casing shall be center-line discharge for positive air venting constructed of class 35 cast iron with integrally cast mounting feet. The pump shall be fitted with replaceable bronze wear rings, drilled and tapped for gauge ports at both the suction and discharge flanges and for drain port at the bottom of the casing. The pump shall be capable of being serviced without disturbing the system piping.

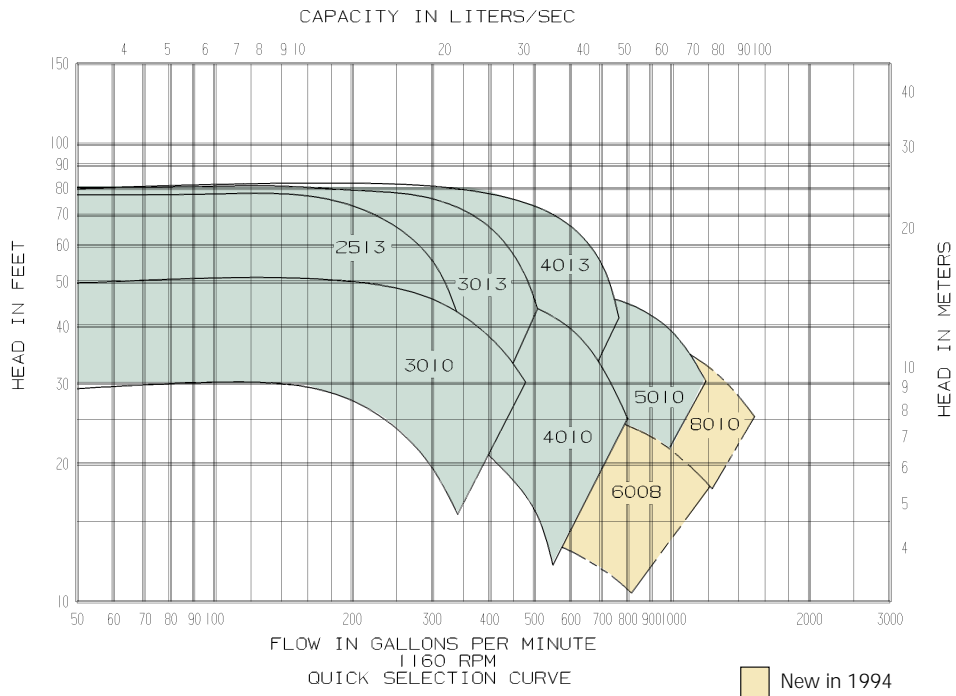
The impeller shall be bronze and hydraulically balanced by either back vanes or back wear ring and balancing holes. The impeller shall be dynamically balanced and shall be fitted to the shaft with a key.

The pump shall be close coupled to a NEMA standard JM regreaseable motor. The pump shall incorporate a dry shaft design to prevent the circulating fluid from contacting the shaft. The shaft shall be covered with a replaceable bronze (stainless steel) shaft sleeve.

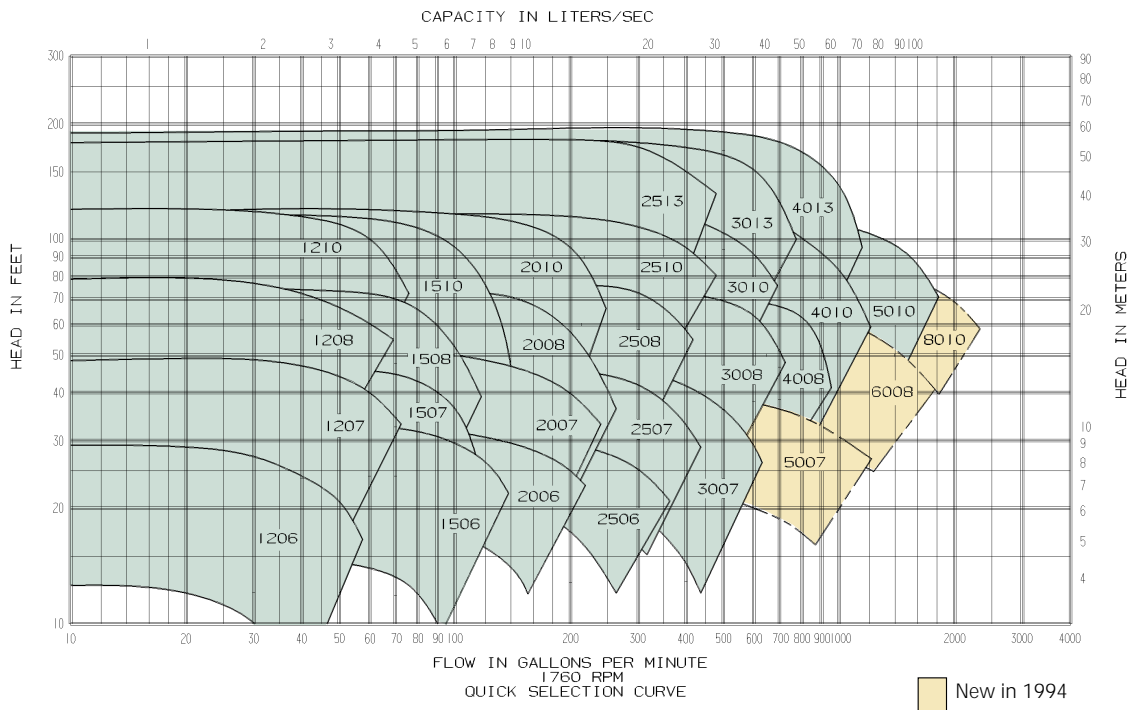
The pump shall have a self flushing seal design or a positive external seal flushing line. Any mechanical seal pump used on an open system shall be furnished with a seal flush line and a Purocell #900 replaceable cartridge filter with shut-off isolation valve installed in the seal flushing line. The filter shall have the ability to remove particles down to five microns in size.

The pump seal shall be EPT Ceramic rated 250°F (EPT Tungsten carbide rated to 300°F).

**CE SERIES PERFORMANCE
FIELD 1160 RPM**

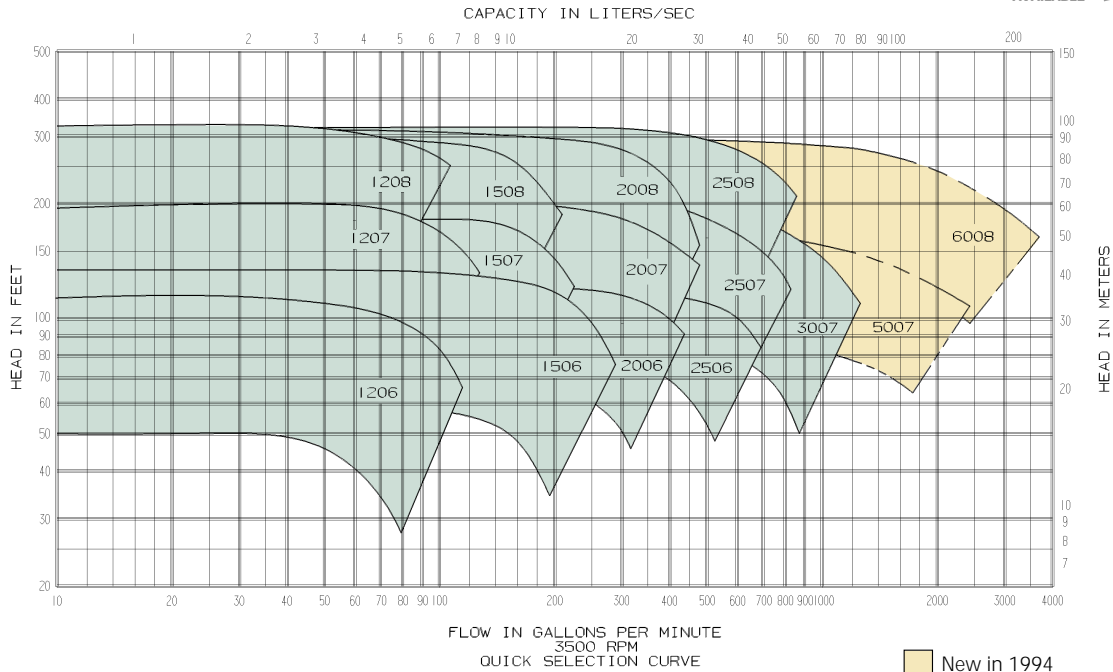


**CE SERIES PERFORMANCE
FIELD 1760 RPM**



CE SERIES PERFORMANCE FIELD 3500 RPM

TacoNet
COMPUTER
AIDED
SELECTIONS
AVAILABLE



CE PUMP MATERIALS OF CONSTRUCTION

Description	Bronze Fitted		All Iron	
	Standard*	Optional	Standard	Optional
Casing	Cast Iron ASTM A48 CLASS 35		Cast Iron ASTM A48 CLASS 35	
Impeller	Bronze ASTM B30 ALLOY 4A		Cast Iron ASTM A48 CLASS 35	
Wear Ring	Bronze ASTM B30 ALLOY 4A		Bronze ASTM B30 ALLOY 4A	
Shaft	Carbon Steel AISI 1045	Stainless Steel AISI 416	Carbon Steel AISI 1045	Stainless Steel AISI 416
Shaft Sleeve	Bronze SAE 660	Stainless Steel AISI 416	Stainless Steel AISI 416	
Mechanical Seal: Stationary Seat	Ceramic	Tungsten Carbide	Ceramic	Tungsten Carbide
Rotating Face	Carbon		Carbon	
Elastomer	Ethylene Propylene		Ethylene Propylene	
Spring	Stainless Steel		Stainless Steel	
Seal Flush Line		Copper		Copper

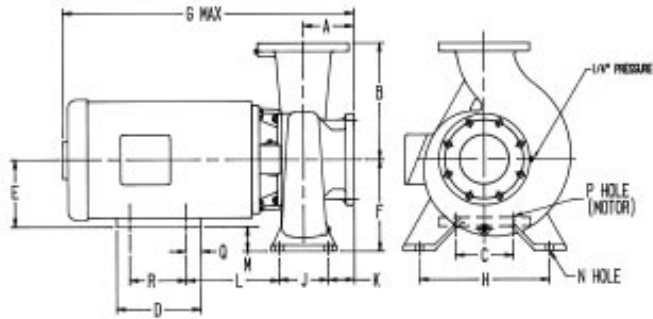
*Standard Pump Construction

OPERATING SPECIFICATIONS		
	Standard	Optional
Pressure	175 PSIG*	
Temperature: Mechanical Seal	250°F	300°F

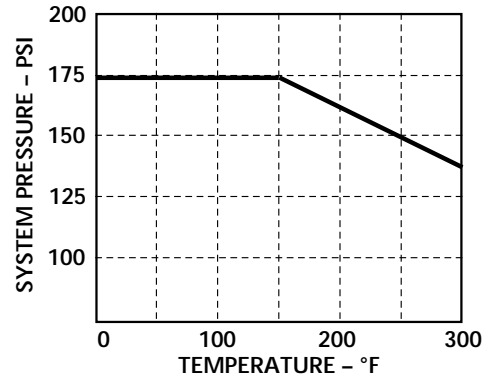
ADDITIONAL OPTIONS	
Filters	Cuno 5 Micron
Separators	Kynar Cyclone Separator

Motors: All NEMA Standard (JM) * In accordance with ANSI Standard B16.1 Class 125

CE SERIES PUMP DIMENSIONS



PRESSURE-TEMPERATURE RATINGS



Series No CE	MTR. Frame Size	A	B	C	D	E	F	G MAX.	H	J	K	M	N	P	Q	R	L	CONN
1206	143	2 15/16	5 11/16	5 1/2	6 1/2	3 1/2	4 13/16	18 7/16	5 17/32	2 3/4	1 9/16	29/32	9/16	11 1/32	1 1/4	4	5 1/2	2x1 1/4
	145														3/4	5		
	182			7 1/2		4 1/2		19 1/8				-3/32		13 1/32	1	4 1/2	6 5/8	
1207	143	2 15/16	6 1/8	5 1/2	6 1/2	3 1/2	5 3/16	18 3/8	7 15/32	2 3/4	1 9/16	1 11/16	9/16	11 1/32	1 1/4	4	5 1/2	2x1 1/4
	145														3/4	5		
	182			7 1/2		4 1/2		19 1/8				1 1/16		13 1/32	1	4 1/2	6 5/8	
	184														1/2	5 1/2	7 1/2	
213			8 1/2		5 1/2		20 7/16				-1/16							
1208	143	2 15/16	6 15/16	5 1/2	6 1/2	3 1/2	6 5/16	18 3/8	7 15/32	2 3/4	1 9/16	2 13/16	9/16	11 1/32	1 1/4	4	5 1/2	2x1 1/4
	145														3/4	5		
	182			7 1/2		4 1/2		19 1/8				1 13/16		13 1/32	1	4 1/2	6 5/8	
	184														1/2	5 1/2	7 1/2	
	213			8 1/2		5 1/2		20 7/16				1 1/16						
215				8			21 15/16									7		
1210	182	3 3/4	8 11/16	7 1/2	6 1/2	4 1/2	7 3/8	19 15/16	9 27/32	3 3/4	1 1/2	2 19/32	9/16	13 1/32	1	4 1/2	6 5/8	2x1 1/4
	184														1/2	5 1/2		
1506	143	2 15/16	5 5/8	5 1/2	6 1/2	3 1/2	4 13/16	18 7/16	6 5/16	2 3/4	1 9/16	29/32	9/16	11 1/32	1 1/4	4	5 1/2	2 1/2x1 1/2
	145														3/4	5		
	182			7 1/2		4 1/2		19 1/8				-3/32		13 1/32	1	4 1/2	6 5/8	
	184														1/2	5 1/2	7 1/2	
213			8 1/2		5 1/4		20 7/16				-27/32							
1507	143	2 15/16	6 3/8	5 1/2	6 1/2	3 1/2	5 3/8	18 3/8	7 15/32	2 3/4	1 9/16	1 11/16	9/16	11 1/32	1 1/4	4	5 1/2	2 1/2x1 1/2
	145														3/4	5		
	182			7 1/2		4 1/2		19 1/8				1 1/16		13 1/32	1	4 1/2	6 5/8	
	184														1/2	5 1/2	7 1/2	
	213			8 1/2		5 1/4		20 7/16				-1/16						
215				8			21 15/16									7		
1508	143	3 3/4	6 1/8	5 1/2	6 1/2	3 1/2	6 5/16	19 1/4	8 11/32	2 3/4	2 3/8	2 13/16	9/16	11 1/32	1 1/4	4	5 1/2	2 1/2x1 1/2
	145														3/4	5		
	182			7 1/2		4 1/2		19 15/16				1 13/16		13 1/32	1	4 1/2	6 5/8	
	184														1/2	5 1/2	7 1/2	
	213			8 1/2		5 1/4		21 1/4				1 1/16						
	215				8			22 3/4									7	
254			10	9 1/2	6 1/2		25 5/8				1 1/16			17 1/32	5/8	8 1/4	8 3/4	
1510	145	3 3/4	8 27/32	5 1/2	6 1/2	3 1/2	7 3/8	19 1/4	9 27/32	3 3/4	1 1/2	3 19/32	9/16	11 1/32	3/4	5	5 3/8	2 1/2x1 1/2
	182			7 1/2		4 1/2		19 15/16				2 19/32		13 1/32	1	4 1/2	6 5/8	
	184														1/2	5 1/2	7 1/2	
	213			8 1/2		5 1/4		21 1/4				1 27/32						
2006	143	3 3/4	6 3/8	5 1/2	6 1/2	3 1/2	5 3/8	19 1/4	7 15/32	2 3/4	2 3/8	1 11/16	9/16	11 1/32	1 1/4	4	5 1/2	2 1/2x2
	145														3/4	5		
	182			7 1/2		4 1/2		19 15/16				1 1/16		13 1/32	1	4 1/2	6 5/8	
	184														1/2	5 1/2	7 1/2	
	213			8 1/2		5 1/4		21 1/4				-1/16						
215				8			22 3/4									7		

Series No CE	MTR. Frame Size	A	B	C	D	E	F	G MAX.	H	J	K	M	N	P	Q	R	L	CONN
2007	143	3 3/4	6 1/8	5 1/2	6 1/2	3 1/2	6 5/8	19 1/4	8 1/2	2 3/4	2 3/8	2 13/16	9/16	1 1/2	1 1/4	4	5 1/8	2 1/2x2
	145			7 1/2		4 1/2		19 15/16				1 13/16		3/4	5			
	182			8 1/2		5 1/2		21 1/4				1 1/16		1 1/2	4 1/2	6 3/4		
	184			8		5 1/2		22 3/4				1/16		1/2	5 1/2	7 1/2		
	213			10		9 1/2		6 1/4				25 3/4		1/8	7	8 3/4		
	215			11 1/4		27 1/4		8 1/4				10		8 3/4				
	254			11		10 3/4		7				28 1/4		9 1/2	8 3/4			
256	12 1/4	29 3/4	11	29 3/4	11	8 3/4												
2008	145	3 3/4	7 1/8	5 1/2	6 1/2	3 1/2	6 5/8	19 1/4	8 1/2	2 3/4	2 3/8	2 13/16	9/16	1 1/2	3/4	5	5 1/8	2 1/2x2
	182			7 1/2		4 1/2		19 15/16				1 13/16		1 1/2	4 1/2	6 3/4		
	184			8 1/2		5 1/2		21 1/4				1 1/16		1/2	5 1/2	7 1/2		
	213			8		5 1/2		22 3/4				1/16		7	8 3/4			
	215			10		9 1/2		6 1/4				25 3/4		1/8	8 1/4	8 3/4		
	254			11 1/4		27 1/4		10				27 1/4		10	8 3/4			
	256			11		10 3/4		7				28 1/4		9 1/2	8 3/4			
284	12 1/4	29 3/4	11	29 3/4	11	8 3/4												
286	12 1/4	29 3/4	11	29 3/4	11	8 3/4												
2010	184	3 3/4	8 1/8	7 1/2	6 1/2	4 1/2	7 3/4	19 15/16	9 27/32	3 3/4	1 7/8	2 15/16	9/16	1 3/2	1/2	5 1/2	6 3/4	2 1/2x2
	213			8 1/2		5 1/2		21 1/4				1 27/32		7				
	215			8		5 1/2		22 3/4				7						
2506	145	3 3/4	6 3/8	5 1/2	6 1/2	3 1/2	6 5/8	19 1/4	8 1/2	3 3/4	1 7/8	2 13/16	9/16	1 1/2	3/4	5	5 1/8	3x2 1/2
	182			7 1/2		4 1/2		19 15/16				1 13/16		1 1/2	4 1/2	6 3/4		
	213			8 1/2		5 1/2		21 1/4				1 1/16		1/2	5 1/2	7		
	215			8		5 1/2		22 3/4				1/16		7	8 3/4			
	254			10		9 1/2		6 1/4				25 3/4		1/8	8 1/4	8 3/4		
	256			11 1/4		27 1/4		10				27 1/4		10	8 3/4			
2507	145	3 3/4	7 1/8	5 1/2	6 1/2	3 1/2	6 5/8	19 1/4	8 1/2	3 3/4	1 7/8	2 13/16	9/16	1 1/2	3/4	5	5 1/8	3x2 1/2
	182			7 1/2		4 1/2		19 15/16				1 13/16		1 1/2	4 1/2	6 3/4		
	184			8 1/2		5 1/2		21 1/4				1 1/16		1/2	5 1/2	7 1/2		
	215			8		5 1/2		22 3/4				1/16		7	8 3/4			
	254			10		9 1/2		6 1/4				25 3/4		1/8	8 1/4	8 3/4		
	256			11 1/4		27 1/4		10				27 1/4		10	8 3/4			
	284			11		10 3/4		7				28 1/4		9 1/2	8 3/4			
286	12 1/4	29 3/4	11	29 3/4	11	8 3/4												
2508	182	3 3/4	8 1/8	7 1/2	6 1/2	4 1/2	7 3/4	19 15/16	9 27/32	3 3/4	1 7/8	2 15/16	9/16	1 3/2	1/2	4 1/2	6 3/4	3x2 1/2
	184			8 1/2		5 1/2		21 1/4				1 27/32		7				
	213			8		5 1/2		22 3/4				7						
	254			10		9 1/2		6 1/4				25 3/4		1/8	8 1/4	8 3/4		
	256			11 1/4		27 1/4		10				27 1/4		10	8 3/4			
	284			11		10 3/4		7				28 1/4		9 1/2	8 3/4			
	286			12 1/4		29 3/4		11				29 3/4		11	8 3/4			
324	12 1/4	29 3/4	11	29 3/4	11	8 3/4												
326	14 3/4	31 3/4	12	31 3/4	12	8 3/4												
2510	184	3 3/4	9 23/32	7 1/2	6 1/2	4 1/2	7 7/8	19 15/16	11 1/2	4 23/32	1 3/8	3 3/8	23/32	1 3/2	1/2	5 1/2	5 3/4	3x2 1/2
	213			8 1/2		5 1/2		21 1/4				2 7/8		7	6 3/4			
	215			8		5 1/2		22 3/4				7						
	254			10		9 1/2		6 1/4				25 3/4		1 5/8	8 1/4	7 25/32		
	256			11 1/4		27 1/4		10				27 1/4		10	7 25/32			
2513	213	4 23/32	10 13/16	8 1/2	6 1/2	5 1/2	8 7/8	22 1/4	12 13/32	4 23/32	2 3/8	3 3/8	23/32	1 3/2	1/2	5 1/2	6 29/32	3x2 1/2
	215			8		5 1/2		24 1/4				7						
	254			10		9 1/2		6 1/4				26 3/4		2 5/8	8 1/4	7 25/32		
	256			11 1/4		28 1/4		10				28 1/4		10	7 25/32			
	284			11		10 3/4		7				29 3/4		1 7/8	9 1/2			
3007	145	4 23/32	8 1/8	5 1/2	6 1/2	3 1/2	7 3/4	20 1/2	9 27/32	3 3/4	2 27/32	3 19/32	9/16	1 1/2	3/4	5	5 1/8	4x3
	182			7 1/2		4 1/2		20 29/32				2 15/32		1 1/2	4 1/2	6 3/4		
	184			8 1/2		5 1/2		22 1/4				1 27/32		1/2	5 1/2	7		
	213			8		5 1/2		22 3/4				1 27/32		7	8 3/4			
	215			10		9 1/2		6 1/4				26 3/4		27/32	8 1/4	8 3/4		
	254			11 1/4		28 1/4		10				28 1/4		10	8 3/4			
	256			11		10 3/4		7				29 3/4		3/32	9 1/2			
284	12 1/4	30 3/4	11	30 3/4	11	8 3/4												
286	12 1/4	30 3/4	11	30 3/4	11	8 3/4												
324	12 1/2	32 13/16	12	32 13/16	12	8 3/4												
3008	213	4 23/32	9 3/8	8 1/2	6 1/2	5 1/2	7 3/4	22 3/4	11 1/2	3 3/4	2 27/32	1 27/32	9/16	1 3/2	1/2	5 1/2	7 13/16	4x3
	215			8		5 1/2		24 1/4				7						
	254			10		9 1/2		6 1/4				26 3/4		27/32	8 1/4	8 3/4		

Series No CE	MTR. Frame Size	A	B	C	D	E	F	G MAX.	H	J	K	M	N	P	Q	R	L	CONN			
3010	184	4 ²³ / ₃₂	10 ¹³ / ₁₆	7 ¹ / ₂	6 ¹ / ₂	4 ¹ / ₂	7 ⁷ / ₁₆	20 ²⁹ / ₃₂	12 ¹³ / ₃₂	4 ²³ / ₃₂	2 ³ / ₈	3 ³ / ₈	²³ / ₃₂	¹³ / ₃₂	¹ / ₂	5 ¹ / ₂	5 ⁵ / ₈	4x3			
	213			8 ¹ / ₂		5 ¹ / ₄		22 ⁷ / ₁₆				6 ¹ / ₂									
	215				8			23 ²³ / ₃₂								7					
	254			10	9 ¹ / ₂	6 ¹ / ₄		26 ²³ / ₃₂								1 ⁵ / ₈	17 ¹⁷ / ₃₂		⁵ / ₈	8 ¹ / ₂	7 ²⁵ / ₃₂
	256				11 ¹ / ₄			28 ²³ / ₃₂								10				10	
	284			11	10 ³ / ₄	7		29 ⁷ / ₁₆								⁷ / ₈	9 ¹ / ₂				
3013	213	4 ²³ / ₃₂	12 ³ / ₁₆	8 ¹ / ₂	6 ¹ / ₂	5 ¹ / ₄	9 ²⁷ / ₃₂	22 ⁷ / ₁₆	12 ¹³ / ₃₂	4 ²³ / ₃₂	2 ³ / ₈	4 ¹⁹ / ₃₂	²³ / ₃₂	¹³ / ₃₂	¹ / ₂	5 ¹ / ₂	6 ²⁹ / ₃₂	4x3			
	215			8		24 ¹ / ₈						7									
	254			10	9 ¹ / ₂	6 ¹ / ₄		26 ³ / ₄								3 ¹⁹ / ₃₂	17 ¹⁷ / ₃₂		⁵ / ₈	8 ¹ / ₂	7 ²⁵ / ₃₂
	256				11 ¹ / ₄			28 ³ / ₄								2 ²⁷ / ₃₂				9 ¹ / ₂	
	284			11	10 ³ / ₄	7		29 ⁷ / ₁₆								11				10	
	286				12 ¹ / ₄			30 ⁷ / ₁₆								11				11	
324	12 ¹ / ₂	12 ¹ / ₈	8	30 ¹³ / ₁₆		1 ²⁷ / ₃₂	21 ²¹ / ₃₂	1 ³ / ₁₆	10 ¹ / ₂	8 ⁹ / ₃₂											
4008	213	4 ²³ / ₃₂	10 ¹³ / ₁₆	8 ¹ / ₂	6 ¹ / ₂	5 ¹ / ₄	7 ⁷ / ₁₆	22 ⁷ / ₁₆	11 ¹ / ₂	4 ²³ / ₃₂	2 ³ / ₈	2 ⁵ / ₈	²³ / ₃₂	¹³ / ₃₂	¹ / ₂	5 ¹ / ₂	6 ²⁹ / ₃₂	5x4			
	215			8		24 ¹ / ₈						7									
	254			10	9 ¹ / ₂	6 ¹ / ₄		26 ³ / ₄								1 ⁵ / ₈	17 ¹⁷ / ₃₂		⁵ / ₈	8 ¹ / ₂	7 ²⁵ / ₃₂
	256				11 ¹ / ₄			28 ³ / ₄								10				10	
4010	213	5 ⁵ / ₁₆	10 ¹³ / ₁₆	8 ¹ / ₂	6 ¹ / ₂	5 ¹ / ₄	8 ⁷ / ₁₆	23 ¹¹ / ₃₂	12 ¹³ / ₃₂	4 ²³ / ₃₂	2 ¹⁵ / ₁₆	3 ⁵ / ₈	²³ / ₃₂	¹³ / ₃₂	¹ / ₂	5 ¹ / ₂	7 ¹ / ₂	5x4			
	215			8		24 ²⁷ / ₃₂						7									
	254			10	9 ¹ / ₂	6 ¹ / ₄		27 ¹⁵ / ₃₂								2 ⁵ / ₈	17 ¹⁷ / ₃₂		⁵ / ₈	8 ¹ / ₂	7 ²⁹ / ₃₂
	256				11 ¹ / ₄			29 ¹⁵ / ₃₂								1 ⁷ / ₈				10	
	284			11	10 ³ / ₄	7		29 ⁷ / ₁₆								11				9 ¹ / ₂	
	286				12 ¹ / ₄			31 ¹⁵ / ₃₂								11				11	
4013	254	5 ⁵ / ₁₆	12 ³ / ₁₆	10	9 ¹ / ₂	6 ¹ / ₄	9 ²⁷ / ₃₂	27 ⁷ / ₁₆	12 ¹³ / ₃₂	4 ²³ / ₃₂	2 ¹⁵ / ₁₆	3 ¹⁹ / ₃₂	²³ / ₃₂	¹⁷ / ₃₂	⁵ / ₈	8 ¹ / ₂	7 ²⁹ / ₃₂	5x4			
	256				11 ¹ / ₄			29 ⁷ / ₁₆								10					
	284			11	10 ³ / ₄	7		29 ²⁷ / ₃₂								2 ²⁷ / ₃₂	9 ¹ / ₂				
	286				12 ¹ / ₄			31 ⁷ / ₁₆								11					
	324			12 ¹ / ₂	12 ⁷ / ₈	8		31 ¹³ / ₃₂								1 ²⁷ / ₃₂	21 ²¹ / ₃₂		1 ³ / ₁₆	10 ¹ / ₂	8 ⁹ / ₃₂
	326				14 ³ / ₈			32 ²³ / ₃₂								12				12	
5007	182	5 ⁵ / ₁₆	11	7 ¹ / ₂	6 ¹ / ₂	4 ¹ / ₂	7 ⁷ / ₁₆	22 ³ / ₂	11 ¹ / ₂	4 ²³ / ₃₂	2 ¹⁵ / ₁₆	3 ³ / ₈	²³ / ₃₂	¹³ / ₃₂	1	4 ¹ / ₂	6 ¹ / ₄	5x5			
	184											¹ / ₂				5 ¹ / ₂	7 ¹ / ₈				
	213			8 ¹ / ₂		5 ¹ / ₄		23 ¹³ / ₃₂								2 ⁵ / ₈	7				
	215				8			24 ²⁹ / ₃₂								1 ⁵ / ₈	17 ¹⁷ / ₃₂		⁵ / ₈	8 ¹ / ₂	8 ⁵ / ₈
	254			10	9 ¹ / ₂	6 ¹ / ₄		27 ¹⁵ / ₃₂								7				10	
	256				11 ¹ / ₄			29 ¹⁵ / ₃₂								⁷ / ₈				9 ¹ / ₂	
	284			11	10 ³ / ₄	7		30 ⁷ / ₁₆								11				11	
	286				12 ¹ / ₄			31 ¹⁵ / ₃₂								11				11	
324	12 ¹ / ₂	12 ⁷ / ₈	8	32		- ¹ / ₈	21 ²¹ / ₃₂	1 ³ / ₁₆	10 ¹ / ₂	8 ⁷ / ₈											
326		14 ³ / ₈		33 ⁷ / ₁₆		12			12												
5010	215	5 ⁵ / ₁₆	13 ²⁹ / ₃₂	8 ¹ / ₂	8	5 ¹ / ₄	9 ²⁷ / ₃₂	24 ²⁷ / ₃₂	12 ¹³ / ₃₂	4 ²³ / ₃₂	2 ¹⁵ / ₁₆	4 ¹⁹ / ₃₂	²³ / ₃₂	¹³ / ₃₂	¹ / ₂	7	7 ¹ / ₂	6x5			
	254			10	9 ¹ / ₂	6 ¹ / ₄		27 ⁷ / ₁₆								3 ¹⁹ / ₃₂	17 ¹⁷ / ₃₂		⁵ / ₈	8 ¹ / ₂	7 ²⁹ / ₃₂
	256				11 ¹ / ₄			29 ¹⁵ / ₃₂								10					
	284			11	10 ³ / ₄	7		29 ²⁷ / ₃₂								2 ²⁷ / ₃₂	9 ¹ / ₂				
	286				12 ¹ / ₄			31 ⁷ / ₁₆								11					
	324			12 ¹ / ₂	12 ⁷ / ₈	8		31 ¹⁷ / ₃₂								1 ²⁷ / ₃₂	21 ²¹ / ₃₂		1 ³ / ₁₆	10 ¹ / ₂	8 ¹³ / ₃₂
326		14 ³ / ₈		33 ⁷ / ₁₆		12			12												
6008	213	6 ³ / ₃₂	14	8 ¹ / ₂	6 ¹ / ₂	5 ¹ / ₄	11 ¹ / ₂	24 ⁷ / ₁₆	15 ³ / ₄	5 ²⁹ / ₃₂	3 ⁵ / ₈	5 ²⁵ / ₃₂	²³ / ₃₂	¹³ / ₃₂	¹ / ₂	5 ¹ / ₂	6 ³ / ₄	6x6			
	215				8			25 ¹⁹ / ₁₆								7					
	254			10	9 ¹ / ₂	6 ¹ / ₄		28 ¹⁵ / ₁₆								4 ²⁵ / ₃₂	17 ¹⁷ / ₃₂		⁵ / ₈	8 ¹ / ₂	8
	256				11 ¹ / ₄			30 ¹⁵ / ₁₆								10					
	284			11	10 ³ / ₄	7		31 ⁷ / ₁₆								4 ⁷ / ₃₂				9 ¹ / ₂	
	286				12 ¹ / ₄			32 ¹⁵ / ₁₆								11					
	324			12 ¹ / ₂	12 ⁷ / ₈	8		33								3 ³ / ₂	21 ²¹ / ₃₂		1 ³ / ₁₆	10 ¹ / ₂	8 ¹ / ₂
	326				14 ³ / ₈			34 ⁷ / ₁₆								12				12	
8010	254	6 ³ / ₃₂	16	10	9 ¹ / ₂	6 ¹ / ₄	12 ¹³ / ₃₂	28 ¹⁵ / ₁₆	17 ²³ / ₃₂	5 ²⁹ / ₃₂	3 ⁵ / ₈	6 ⁵ / ₂	²³ / ₃₂	¹⁷ / ₃₂	⁵ / ₈	8 ¹ / ₂	8	8x8			
	256				11 ¹ / ₄			30 ¹⁵ / ₁₆								10					
	284			11	10 ³ / ₄	7		31 ⁷ / ₁₆								5 ¹³ / ₃₂	9 ¹ / ₂				
	286				12 ¹ / ₄			32 ¹⁵ / ₁₆								11					
	324			12 ¹ / ₂	12 ⁷ / ₈	8		33								4 ¹³ / ₃₂	21 ²¹ / ₃₂		1 ³ / ₁₆	10 ¹ / ₂	8 ¹ / ₂
	326				14 ³ / ₈			34 ⁷ / ₁₆								12				12	



For more information about Taco products, call or write:

Taco, Inc. 1160 Cranston Street, Cranston, Rhode Island, USA 02920 401-942-8000 FAX 401-942-2360

Taco, (Canada) Ltd. 1310 Aimco Boulevard, Mississauga, Ontario, L4W 1B2 416-625-2160 FAX 416-625-8616