

# BERKELEY® B3ZQMS-30

AIR COOLED ENGINE DRIVE

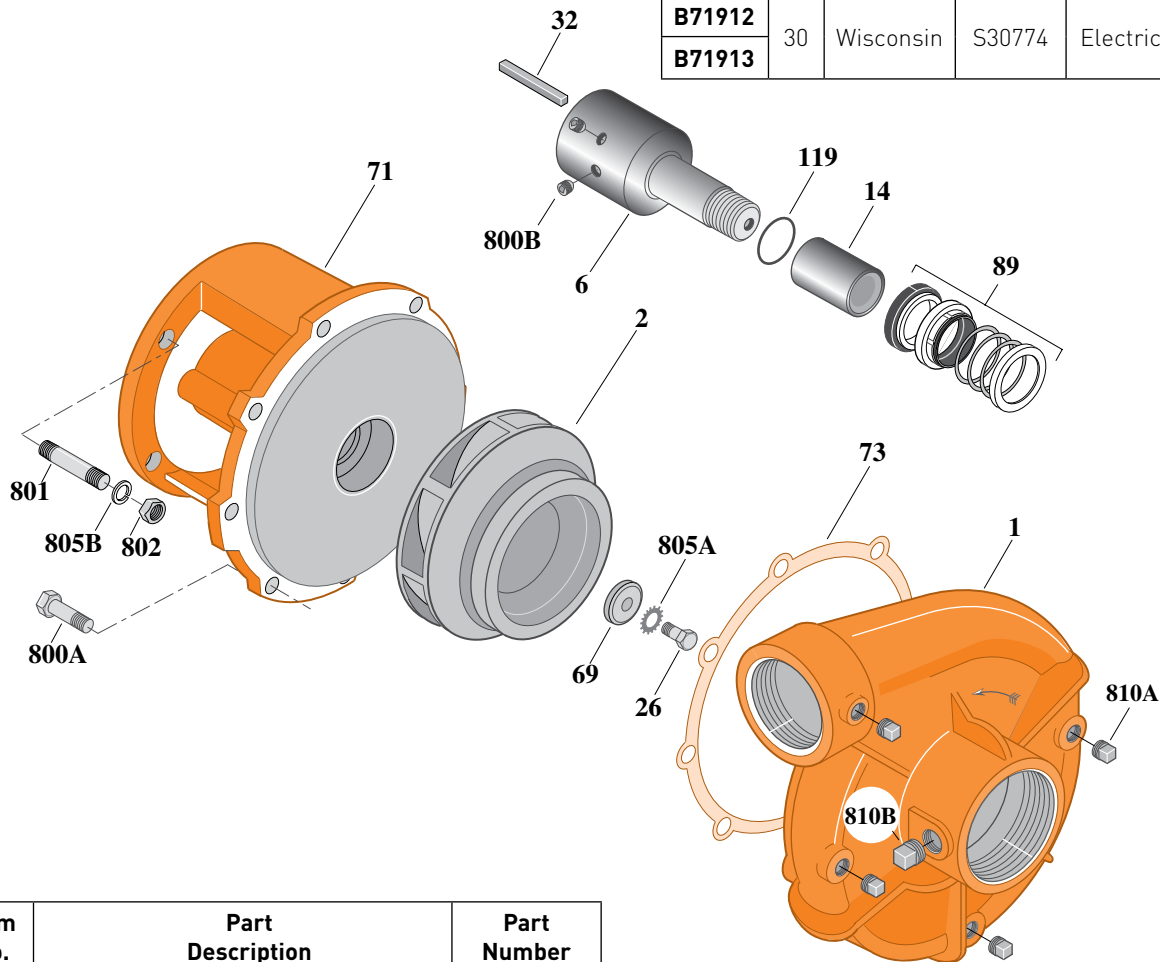
## Cast Iron Impeller

Threaded Case (NPT), Mechanical Seal Construction

Section	AC
Page	150.1
Date	March 4, 2013
Supersedes 02/01/96	

**Table I**

B/M No.	HP	Engine Mfr.	Engine Part No.	Engine Starter	Base Part No.
B71912	30	Wisconsin	S30774	Electric	Unmounted
B71913					S37521



Item No.	Part Description	Part Number
1	Case, Volute	H00689
2	Impeller	L07644
6	Shaft, Telescope	M04274
14	Sleeve, Shaft	M10731
26	Screw, Impeller 3/8-16x1"	S23566
32	Key, 3/8x2"	S24189
69	Washer, Impeller	S06314
71	Bracket	H01079
73	Gasket, Case	S05126
89	Seal, Mechanical Shaft	S32014
119	O-Ring	M10728
800A	Capscrew, Hex 3/8-16x7/8" [8 Req.]	S26825
800B	Screw, Set [2 Req.]	S23955

Item No.	Part Description	Part Number
801	Stud, 7/16-14x2" [4 Req.]	S24004
802	Nut, Hex 7/16-14 [4 Req.]	S23105
805A	Washer, Lock	S23036
805B	Washer, Spring Lock [4 Req.]	S23077
810A	Plug, Pipe 1/4 NPT [4 Req.]	S23715
810B	Plug, Pipe 1/2 NPT	S23717

**NOTE:** Refer to **Supplement A** for base configuration and mounting hardware.

