

# BERKELEY® B3TQMS-18

AIR COOLED ENGINE DRIVE

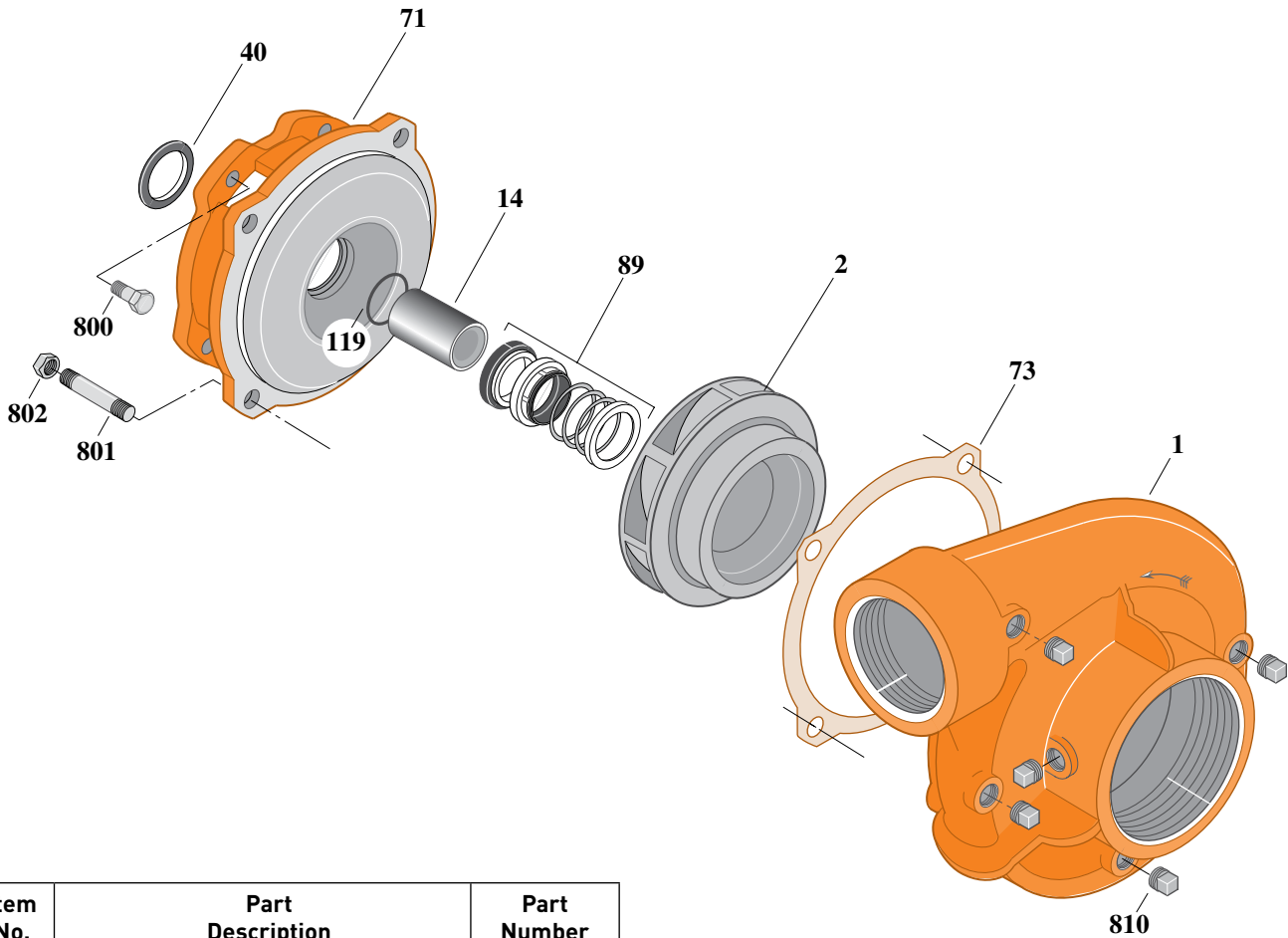
## Cast Iron Impeller

Threaded Case (NPT), Mechanical Seal Construction

Section	AC
Page	140.1
Date	March 4, 2013
Supersedes 01/01/04	

**Table I**

B/M No.	HP	Engine Mfr.	Engine Part No.	Engine Starter	Base Part No.
<b>B71149</b>	18	B & S Vanguard	H05159	Electric	H05248



Item No.	Part Description	Part Number
2	Impeller	M10451
14	Sleeve, Shaft	M10731
40	Slinger, Water	S03893
71	Bracket	L01600
73	Gasket	S04757
89	Seal, Mechanical Shaft	S32014
119	O-Ring	M10728
800	Capscrew, Hex 3/8-16x1" [4 Req.]	S26826
801	Stud, 1/2-13x1-1/2" [4 Req.]	S24043
802	Nut, Hex 1/2-13 [4 Req.]	S23107
810	Plug, Pipe 1/4 NPT [5 Req.]	S23715

**NOTE:** Refer to **Supplement A** for base configuration and mounting hardware.

