



# Submersible Turbine Repair Parts

Section	ST
Page	120.1
Date	June 13, 2007
Supersedes 12/1/04	

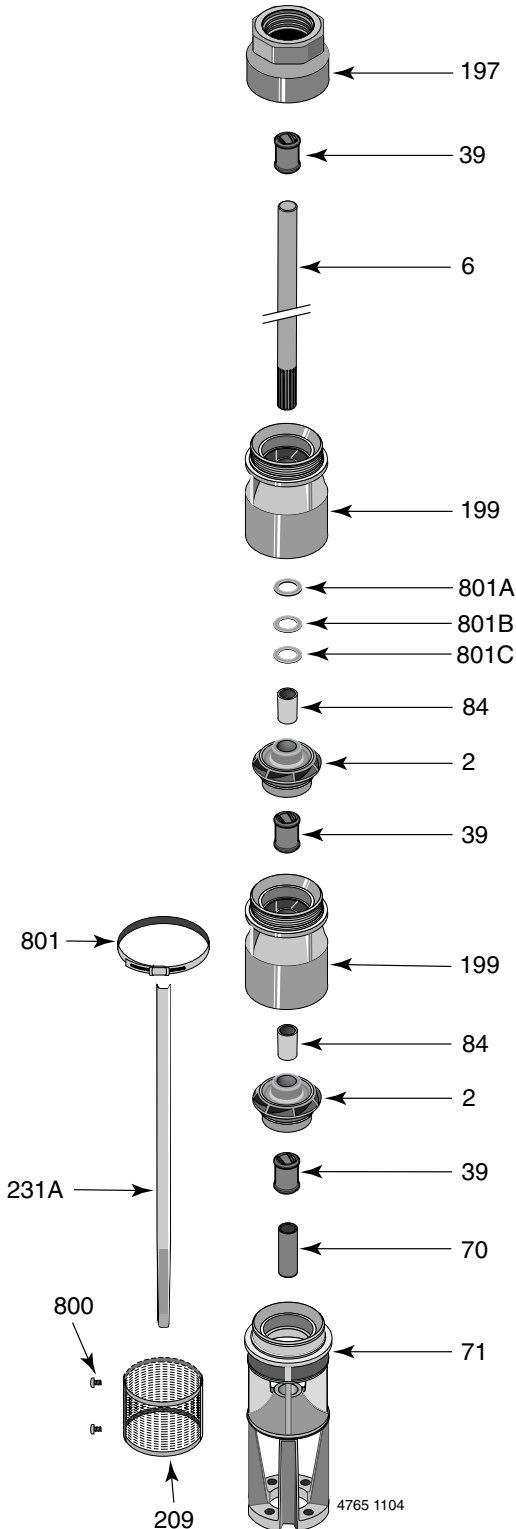
## 7T-350

### 6" Motor

### 7T-350 Common Parts Groups Repair Parts List

Item No.	Part Description	Part Number
39	Rubber Bearing	S13636
70	Splined Coupling	387630500
71	Inlet Bracket for 6" Motor	H05843
84	Collet, Impeller	S05301
197	Discharge Connector, 5" FNPT x 6" MNPT	L06689
199	Top Bowl and Bearing Assembly (Item No. 39)	B82482
209	Suction Screen	L07631
800	Pan Head Tapping Screw #8-15 (2 Req.)	S29885
801	Cable Guard Clamp (2 Req.)	M08595
801A	Upthrust Spacer, 1/8" Brass	M11544
801B	Upthrust Spacer, 1/16" 416SS (as required)	M11190
801C	Upthrust Spacing Shim, 1/8" 416SS (as req.)	M11149
•	Bolt Kit, 6" Motor	B69659
•	Pop Rivet, 5/32" x 3/8" lg. (2 Req.)	M10172
•	Nameplate	M12165
•	Owner's Manual	BE215

• Not illustrated.



### Additional Staging (Quantity: 1 each per stage)

Item Number	Part Number	Part Description
39	S13636	Rubber Bearing (included in bowl)
84	S05301	Impeller Collet
199	B82482	Intermediate Bowl**

\*\* Includes S13636 Bearing.

### Cable Guard Length\*

Stages	Length (In.)
1	16.12
2	22.62
3	29.12
4	35.62
5	42.12
6	48.62
8	61.62
9	68.12

\* Sold in 12' lengths only, Part Number 308666000.

Consult owner's manual for correct assembly and adjustment procedures.



# Submersible Turbine Repair Parts

Section	ST
Page	120.2
Date	December 1, 2004
Supersedes NEW	

**7T-350**  
**6" Motor**

## Available Impellers\*

Description	Part Number	Size (In.)
"A" Full Trim	M11670	5.39 x 4.75
"B" 5% Trim	M11917	5.11 x 4.44
"C" 10% Trim	M11921	5.00 x 4.25

\* 30° trim angle.

## 7T-350 Impeller Specifications

Catalog Number	Horsepower	416 SS Shaft§	Primary Trims	Part Number†	Trim (In.)	Secondary Trim	Part Number	Trim (In.)
B77538	5	M11742	1	M11921	5.00 x 4.25			
B77539	7.5	M11742	1	M11670	5.39 x 4.75			
B77540	10	M11743	2	M11921	5.00 x 4.25			
B77541	15	M11744	3	M11921	5.00 x 4.25			
B77542	20	M11744	3	M11670	5.39 x 4.75			
B77543	25	M11745	3	M11670	5.39 x 4.75	1	M11917	5.11 x 4.44
B77544	30	M11746	3	M11670	5.39 x 4.75	2	M11917	5.11 x 4.44
B77545	40	M11747	6	M11670	5.39 x 4.75			
B77546	50	M11749	6	M11670	5.39 x 4.75	2	M11917	5.11 x 4.44
B77547	60	M11750	9	M11670	5.39 x 4.75			

† Key #2 – Impeller.

§ Key #6 – Pump Shaft.



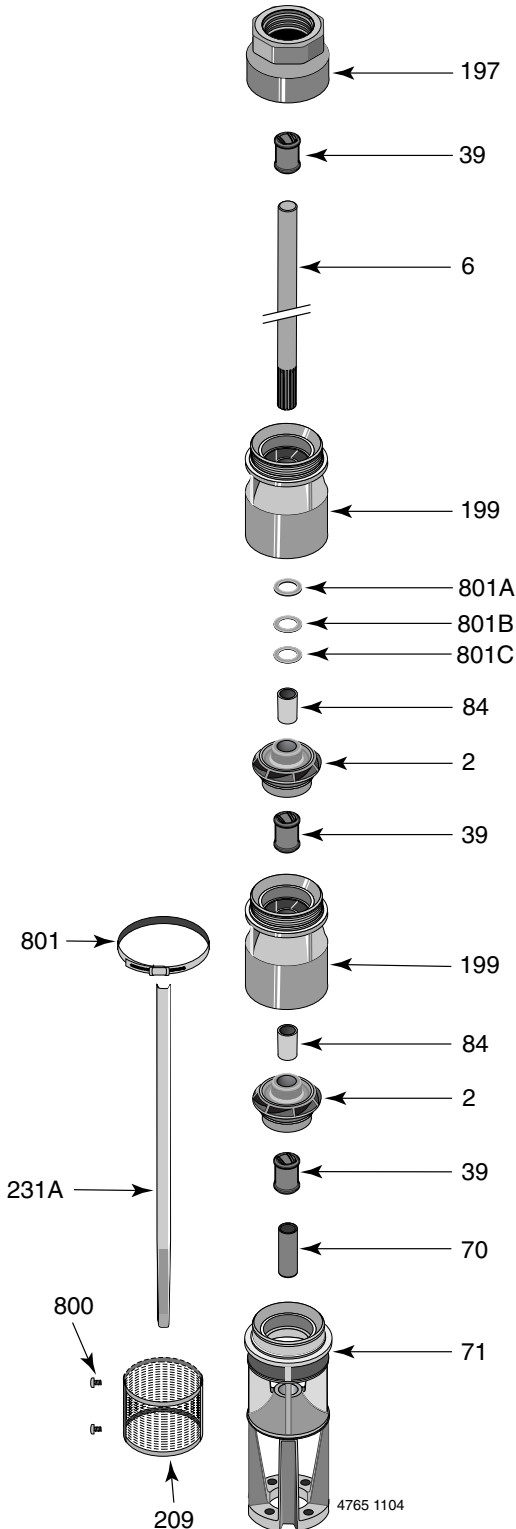
# Submersible Turbine Repair Parts

Section	ST
Page	130.1
Date	June 13, 2007
Supersedes 12/1/04	

## 7T-350

### 8" Motor

### 7T-350 Common Parts Groups Repair Parts List



Item No.	Part Description	Part Number
39	Rubber Bearing	S13636
70	Splined Coupling, 8" Motor	S32704
71	Inlet Bracket for 8" Motor	H05844
84	Collet, Impeller	S05301
197	Discharge Connector, 5" FNPT x 6" MNPT	L06689
199	Top Bowl and Bearing Assembly (Item No. 39)	B82482
209	Suction Screen	L07631
800	Pan Head Tapping Screw #8-15 (2 Req.)	S29885
801	Cable Guard Clamp (2 Req.)	M10191
801A	Uphrust Spacer, 1/8" Brass	M11544
801B	Uphrust Spacer, 1/16" 416SS (as required)	M11190
801C	Uphrust Spacing Shim, 1/8" 416SS (as req.)	M11149
	Lock Washer, Spring (4 req.)	S23093
	Capscrew, 5/8"-11 x 2-1/2" lg. (4 req.)	S27005
	• Pop Rivet, 5/32" x 3/8" lg. (2 Req.)	M10172
	• Nameplate	M12165
	• Owner's Manual	BE215

• Not illustrated.

#### Additional Staging (Quantity: 1 each per stage)

Item Number	Part Number	Part Description
39	S13636	Rubber Bearing (included in bowl)
84	S05301	Impeller Collet
199	B82482	Intermediate Bowl**

\*\* Includes S13636 Bearing.

#### Cable Guard Length\*

Stages	Length (In.)
11	81.93
14	101.43

\* Sold in 12' lengths only, Part Number M10252.

Consult owner's manual for correct assembly and adjustment procedures.



# Submersible Turbine Repair Parts

Section	ST
Page	130.2
Date	December 1, 2004
Supersedes NEW	

## 7T-350

### 8" Motor

#### Available Impellers\*

Description	Part Number	Size (In.)
"A" Full Trim	M11670	5.39 x 4.75
"B" 5% Trim	M11917	5.11 x 4.44
"C" 10% Trim	M11921	5.00 x 4.25

\* 30° trim angle.

#### 7T-350 Impeller Specifications

Catalog Number	Horsepower	416 SS Shaft§	Primary Trims	Part Number†	Trim (In.)	Secondary Trim	Part Number	Trim (In.)
B77548	75	M11767	10	M11670	5.39 x 4.75			
B77549	100	M11770	14	M11670	5.39 x 4.75			

† Key #2 – Impeller.

§ Key #6 – Pump Shaft.