

BERKELEY® 6TMH SERIES

140 GPM, 60HZ, NPT

Section	ST-6TMH
Page	1.0
Date	July 15, 2015
Supersedes	10/08/2014

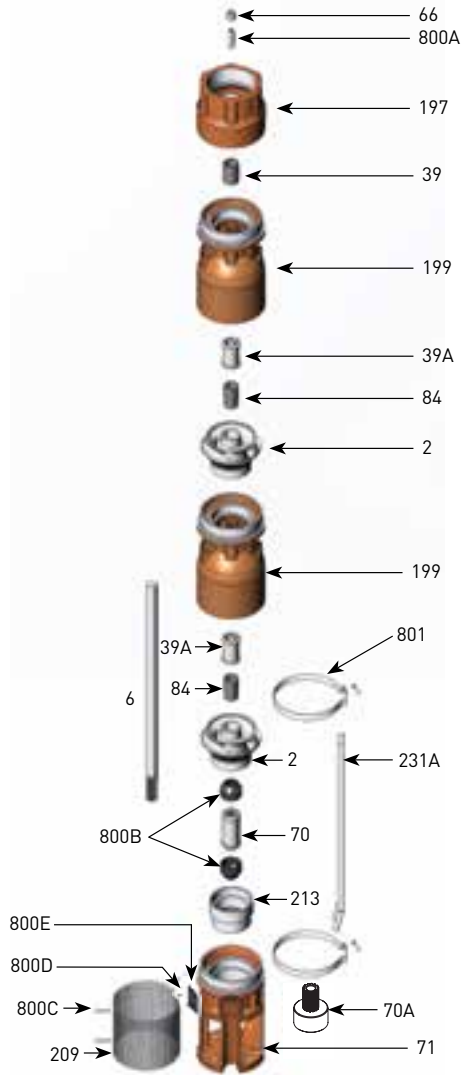


TABLE 1 - 6TMH-140 Common Parts Group

Item Number	Part Number	Description	Required Qty
2	See Table 3	Impeller	1 Per Stage
6	See Table 4	Shaft	1
39	M15886	Vesconite® Bearing	1
39A	S13636	Neoprene Bearing	1 Per Stage
66	M15881	Upthrust Nut, 1/2-13 LH	1
70	M15872	6" Motor Coupling	1
70A	M15847	4" Motor Coupling	1
71	M15869	6TMH 4"/6" Motor Suction Bracket	1
84	S05301	1" Collet	1 Per Stage
199	B86168	6TMH-140 Bowl (incl. Neoprene Bearing)	1 Per Stage
197	M15868	6TMH Discharge, 4" NPT	1
209	M15870	Suction Screen	1
213	M15876	Intake Adapter Insert	1
231A	30866000	Cable Guard, 12' material	1
800A	M15882	Upthrust Screw, 1/2-13 LH	1
800B	M15874	Sand Boot	2
800C	M15937	Screen Screw, 8-32 x 3/8 Panhead	2
800D	M10199	Rivet, 3/32	2
800E	M09653	Nameplate	1
801	M15879	6TMH Cable Guard Clamp	2
Not Illustrated	M09970	Tag, Upthrust Adjustment	1
Not Illustrated	B86187	Bolt Kit, 6" Motor	1
Not Illustrated	M15847	Adapter Kit, 4" Motor	1
Not Illustrated	BE972	Owner's Manual	1

Note 1: Motor bracket is dual machined for 4" and 6" motors
 Note 2: B86185 includes items 39, 66, 197, 800A

TABLE 2 - Additional Staging

Item Number	Part Number	Description	Required Qty
39A	S13636	Neoprene Bearing	1 Per Stage
	S10708	Bronze Bearing	
199	B86168	6TMH-140 Bowl (incl. Neoprene Bearing)	1 Per Stage
84	S05301	1" Collet	1 Per Stage
2	See Table 3	Impeller	1 Per Stage

Note 3: Bronze bearing may be used in place of the standard Neoprene Bearing.

TABLE 3

Item Number	Part Number	Description	Required Qty
2	M15852	6TMH-140 "A" Impeller 5.0780"	See Table 4
2	M15853	6TMH-140 "B" Impeller 4.800"	
2	M15854	6TMH-140 "C" Impeller 4.530"	

TABLE 4 - 60 Hz Staging Requirements Build Table

Series ^c	HP/kW	Stages	"A" Trim	"B" Trim	"C" Trim	416 SS shaft		Ion-nitride shaft		Shaft Length (in/mm)	Cable Guard Length ^d	Assembled pump length (motor not included)
						Pump catalog number	416 SS Shaft p/n	Pump catalog number	Ion Nitride Shaft p/n			
6TMH5-140	5/3.7	2		1	1	B86319	M16094	B86319N	M16127	17.75 in/450.9 mm	15.50 in/393.7 mm	23.17 in/588.5 mm
6TMH7.5-140	7.5/5.6	3	1		2	B86320	M16095	B86320N	M16128	24.00 in/609.6 mm	21.75 in/552.5 mm	29.42 in/747.3 mm
6TMH10-140	10/7.5	3	3			B86321	M16095	B86321N	M16128	24.00 in/609.6 mm	21.75 in/552.5 mm	29.42 in/747.3 mm
6TMH15-140	15/11.2	5	3	2		B86322	M16097	B86322N	M16130	36.50 in/927.1 mm	34.25 in/870.0 mm	46.17 in/1172.7 mm
6TMH20-140	20/14.9	6	6			B86323	M16098	B86323N	M16131	42.75 in/1085.9 mm	40.50 in/1028.7 mm	52.42 in/1331.5 mm
6TMH25-140	25/18.6	8	7		1	B86324	M16099	B86324N	M16132	55.25 in/1403.4 mm	53.00 in/1346.2 mm	64.92 in/1649.0 mm
6TMH30-140	30/22.4	9	9			B86325	M16100	B86325N	M16133	61.5 in/1562.1 mm	59.25 in/1505.0 mm	71.17 in/1807.7 mm
6TMH40-140	40/29.8	12	12			B86326	M16102	B86326N	M16135	80.25 in/2038.4 mm	78.00 in/1981.2 mm	89.92 in/2284.0 mm
6TMH50-140	50/37.3	16	14		2	B86327	M16103	B86327N	M16136	105.25 in/2673.4 mm	103.00 in/2616.2 mm	114.92 in/2919.0 mm
6TMH60-140	60/44.7	18	18			B86328	M16104	B86328N	M16137	117.75 in/2990.9 mm	115.50 in/2933.7 mm	127.42 in/ 3236.5mm

Note 4: Effective assembled pump diameter with cable guard lying flat against pump is 6.50 inches

