



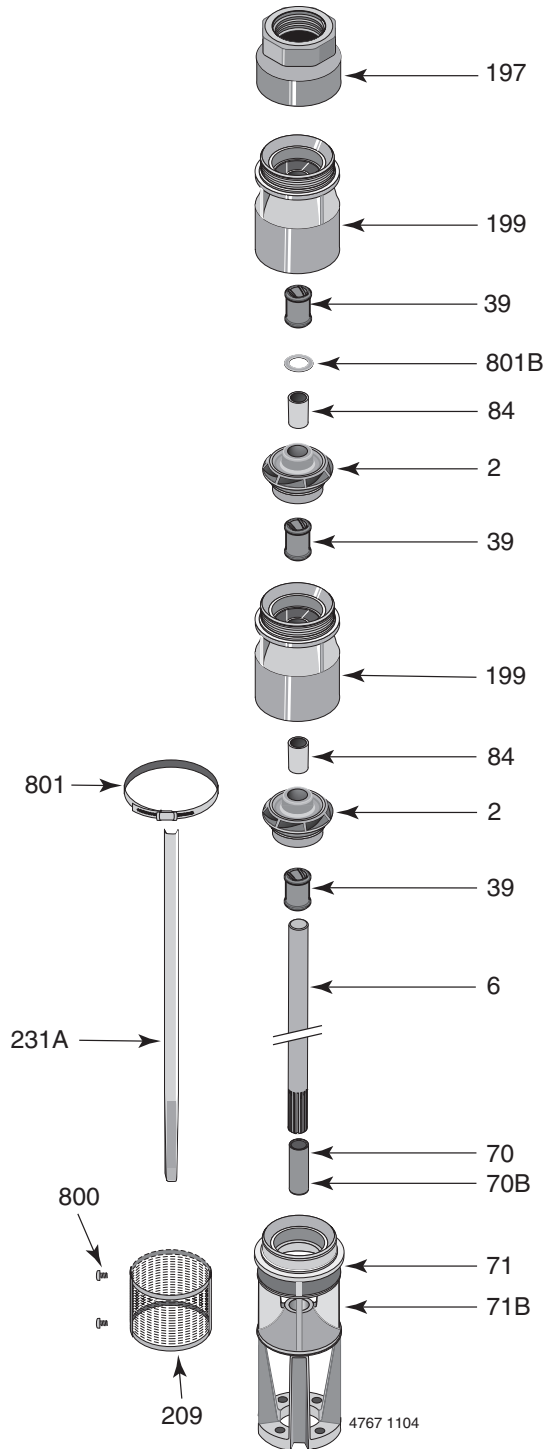
Submersible Turbine Repair Parts

Section	ST
Page	50.1
Date	June 13, 2007
Supersedes 12/1/04	

6T-200

4" & 6" Motors

6T-200 Common Parts Groups Repair Parts List



Item No.	Part Description	Part Number
39	Rubber Bearing	S13636
70	Splined Coupling	387630500
70B	4" Motor Coupling	M11245
71	Inlet Bracket for 6" Motor	H05841
71B	Inlet Bracket for 4" Motor	H05819
84	Collet, Impeller	S05301
197	Discharge Connector, 3" FNPT	L08195
199	Top Bowl and Bearing Assembly (Item No. 39)	B82480
209	Suction Screen	306773500
800	Pan Head Tapping Screw #8-15 (2 Req.)	S29885
801	Cable Guard Clamp (2 Req.)	M09143
801B	Upthrust Spacer, 1/16" Brass (as required)	M11546
	• Bolt Kit, 6" Motor	B69659
	• Bolt Kit, 4" Motor	B76087
	• Pop Rivet, 5/32" x 3/8" lg. (2 Req.)	M10172
	• Nameplate	M12165
	• Owner's Manual	BE215

• Not illustrated.

Additional Staging (Quantity: 1 each per stage)

Item Number	Part Number	Part Description
39	S13636	Rubber Bearing (included in bowl)
84	S05301	Impeller Collet
199	B82480	Intermediate Bowl**

** Includes S13636 Bearing.

6" Cable Guard Length*

Stages	Length (In.)
2	19.88
3	24.88
4	29.88
6	39.88
8	49.88
10	59.88
12	69.88
16	89.88
20	109.88

4" Cable Guard Length*

Stages	Length (In.)
2	18.00
3	23.00

* Sold in 12' lengths only, Part Number 308666000.

Consult owner's manual for correct assembly and adjustment procedures.

Form No. S4855BK



Submersible Turbine Repair Parts

Section	ST
Page	50.2
Date	December 1, 2004
Supersedes NEW	

6T-200

4" & 6" Motors

Available Impellers*

Description	Part Number	Size (In.)
"A" Full Trim	M11666	4.52 x 3.88
"B" 5% Trim	M11862	4.46 x 3.81
"C" 10% Trim	M11863	4.41 x 3.75

* 32° trim angle.

6T-200 Impeller Specifications

Catalog Number	Horsepower	416 SS Shaft§	Primary Trims	Part Number†	Trim (In.)	Secondary Trim	Part Number	Trim (In.)
B76699	5	S39980	2	M11862	4.46 x 3.81			
B76101*	5	L08487	2	M11862	4.46 x 3.81			
B76700	7.5	S39981	2	M11863	4.41 x 3.75	1	M11666	4.52 x 3.88
B76102*	7.5	L08488	2	M11863	4.41 x 3.75	1	M11666	4.52 x 3.88
B76701	10	S39982	3	M11666	4.52 x 3.88	1	M11863	4.41 x 3.75
B76702	15	S39984	5	M11666	4.52 x 3.88	1	M11863	4.41 x 3.75
B76703	20	S39986	8	M11666	4.52 x 3.88			
B76704	25	S39988	10	M11666	4.52 x 3.88			
B76705	30	S39990	12	M11666	4.52 x 3.88			
B76706	40	S39994	16	M11666	4.52 x 3.88			
B76707	50	L06878	20	M11666	4.52 x 3.88			

† Key #2 – Impeller.

§ Key #6 – Pump Shaft.

* Pump equipped with 4" motor.