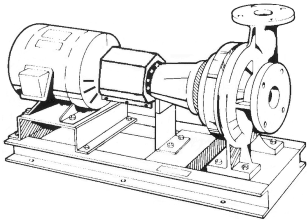


JOB: UNIT TAG: ENGINEER: CONTRACTOR:	REPRESENTATIVE: ORDER NO. SUBMITTED BY: APPROVED BY:	DATE: DATE: DATE:
-----------------------------------------------------------------------------------	---------------------------------------------------------------------------------------------------	----------------------------------------------



6G

Series e-1510

Centrifugal Pumps - Base Mounted

SPECIFICATIONS

FLOW _____ HEAD _____

HP _____ RPM _____

VOLTS _____

CYCLE _____ PHASE _____

ENCLOSURE _____

APPROX. WEIGHT _____

SPECIALS _____

MATERIALS OF CONSTRUCTION

Stainless Steel Fitted

FEATURES

- i-ALERT™ Condition Monitor
- ANSI/OSHA Coupling Guard
- Center Drop Out Spacer Coupling
- Fabricated Heavy Duty Baseplate

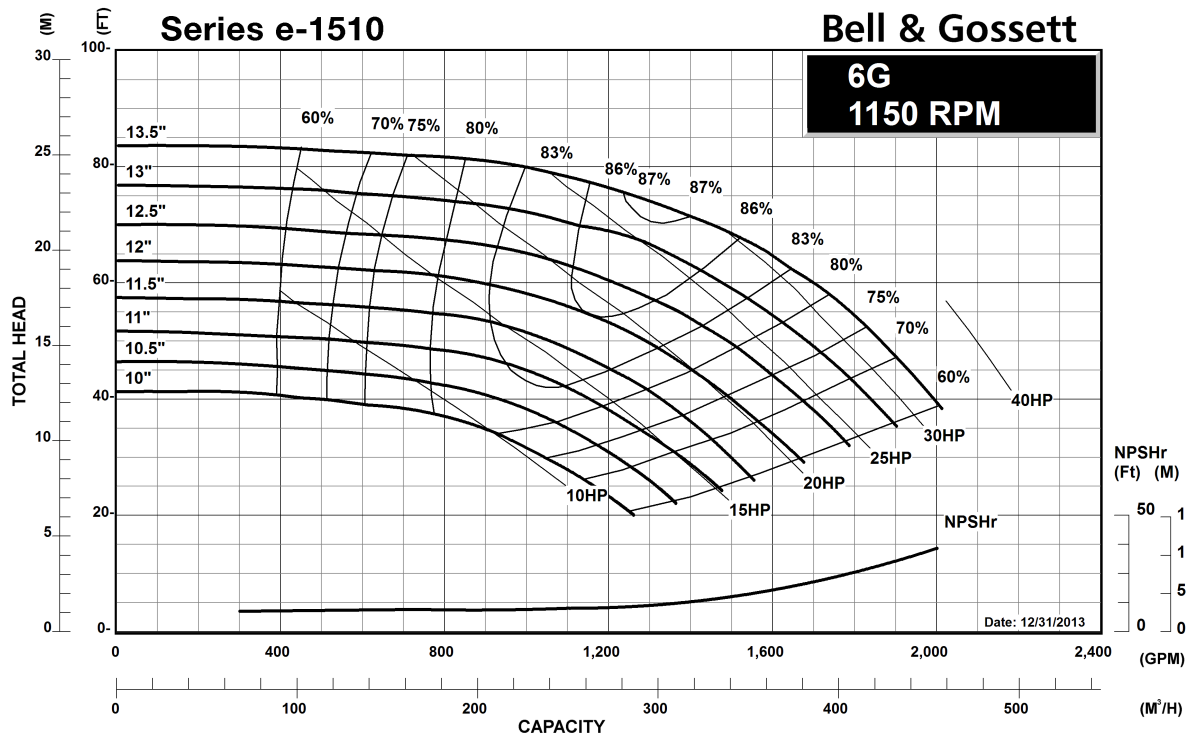
TYPE OF SEAL

- Standard Seal (Buna-Carbon/Ceramic)
- F Standard Seal w/ Flush Line (Buna-Carbon/Ceramic)
- S Stuffing Box Construction w/ Flushed Mechanical Single Seal (EPR-Tungsten Carbide/Carbon)
- PF Stuffing Box Construction w/ Packing (Graphite Impregnated Teflon)

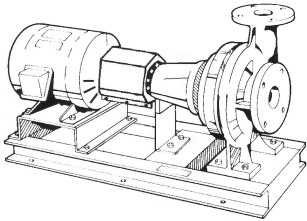
MAXIMUM WORKING PRESSURE

- 175 psi (12 bar) W.P. w/ 125# ANSI flange drilling
- 250 psi (17 bar) W.P. w/ 250# ANSI flange drilling (requires 1510-S)

Note: Equipped with NEOPRENE coupling



JOB:	REPRESENTATIVE:	
UNIT TAG:	ORDER NO.	DATE:
ENGINEER:	SUBMITTED BY:	DATE:
CONTRACTOR:	APPROVED BY:	DATE:



6G

Series e-1510

Centrifugal Pumps - Base Mounted

SPECIFICATIONS

FLOW _____ HEAD _____

HP _____ RPM _____

VOLTS _____

CYCLE _____ PHASE _____

ENCLOSURE _____

APPROX. WEIGHT _____

SPECIALS _____

MATERIALS OF CONSTRUCTION

Stainless Steel Fitted

FEATURES

- i-ALERT™ Condition Monitor
- ANSI/OSHA Coupling Guard
- Center Drop Out Spacer Coupling
- Fabricated Heavy Duty Baseplate

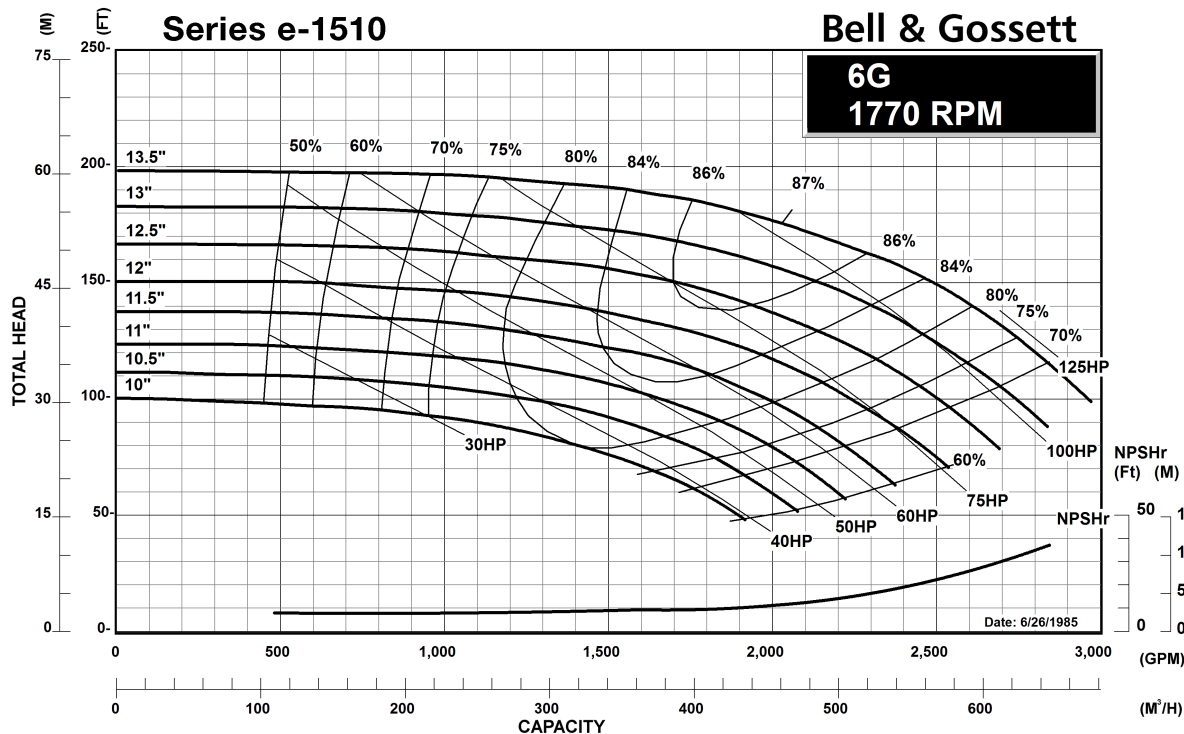
TYPE OF SEAL

- Standard Seal (Buna-Carbon/Ceramic)
- F Standard Seal w/ Flush Line (Buna-Carbon/Ceramic)
- S Stuffing Box Construction w/ Flushed Mechanical Single Seal (EPR-Tungsten Carbide/Carbon)
- PF Stuffing Box Construction w/ Packing (Graphite Impregnated Teflon)

MAXIMUM WORKING PRESSURE

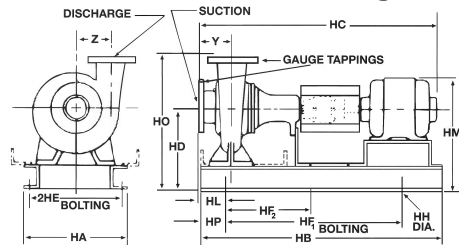
- 175 psi (12 bar) W.P. w/ 125# ANSI flange drilling
- 250 psi (17 bar) W.P. w/ 250# ANSI flange drilling (requires 1510-S)

Note: Equipped with NEOPRENE coupling



Series e-1510 6G Centrifugal Pump Submittal

B-880.48



FLANGE DIMENSIONS IN INCHES (MM)			
	SIZE	THICKNESS	O.D.
Discharge	6" (152)	1-7/16 (37)	12-1/8 (308)
Suction	8" (203)	1-5/8 (41)	14-3/4 (375)

FLANGES ARE: 125# ANSI - STANDARD
250# ANSI - AVAILABLE

DIMENSIONS - Inches (mm)

STANDARD SEAL

MOTOR FRAME	HA	HB	HC MAX	HD	2HE	HF ₁	HF ₂	HH	HL	HM MAX	HO	HP	Y	Z
"L" FRAME														
256T	24 (610)	56 (1422)	49-5/8 (1260)	16-1/2 (419)	21-1/2 (546)	44 (1118)	22 (559)	1 (25)	6-1/4 (159)	23-3/8 (594)	30-1/2 (775)	6 (152)	6-1/2 (165)	9-5/16 (237)
284T	24 (610)	56 (1422)	50-5/8 (1286)	16-1/2 (419)	21-1/2 (546)	44 (1118)	22 (559)	1 (25)	6-1/4 (159)	24-1/2 (622)	30-1/2 (775)	6 (152)	6-1/2 (165)	9-5/16 (237)
286T	24 (610)	56 (1422)	52-1/8 (1324)	16-1/2 (419)	21-1/2 (546)	44 (1118)	22 (559)	1 (25)	6-1/4 (159)	24-1/2 (622)	30-1/2 (775)	6 (152)	6-1/2 (165)	9-5/16 (237)
324T	24 (610)	56 (1422)	54-1/8 (1375)	16-1/2 (419)	21-1/2 (546)	44 (1118)	22 (559)	1 (25)	6-1/4 (159)	25-5/8 (651)	30-1/2 (775)	6 (152)	6-1/2 (165)	9-5/16 (237)
326T	24 (610)	56 (1422)	55-5/8 (1413)	16-1/2 (419)	21-1/2 (546)	44 (1118)	22 (559)	1 (25)	6-1/4 (159)	25-5/8 (651)	30-1/2 (775)	6 (152)	6-1/2 (165)	9-5/16 (237)
364T	24 (610)	56 (1422)	57-7/8 (1470)	16-1/2 (419)	21-1/2 (546)	44 (1118)	22 (559)	1 (25)	6-1/4 (159)	26-3/4 (679)	30-1/2 (775)	6 (152)	6-1/2 (165)	9-5/16 (237)
365T	24 (610)	56 (1422)	58-1/2 (1486)	16-1/2 (419)	21-1/2 (546)	44 (1118)	22 (559)	1 (25)	6-1/4 (159)	26-3/4 (679)	30-1/2 (775)	6 (152)	6-1/2 (165)	9-5/16 (237)
404TS	24 (610)	56 (1422)	58-5/8 (1489)	16-1/2 (419)	21-1/2 (546)	44 (1118)	22 (559)	1 (25)	6-1/4 (159)	28-3/8 (721)	30-1/2 (775)	6 (152)	6-1/2 (165)	9-5/16 (237)
405TS	24 (610)	56 (1422)	59-3/8 (1508)	16-1/2 (419)	21-1/2 (546)	44 (1118)	22 (559)	1 (25)	6-1/4 (159)	30 (762)	30-1/2 (775)	6 (152)	6-1/2 (165)	9-5/16 (237)
"XL" FRAME														
324T	26 (660)	59-1/4 (1505)	58-7/8 (1495)	17 (432)	23-1/2 (597)	47-1/4 (1200)	23-5/8 (600)	1 (25)	6-1/2 (165)	25-1/4 (641)	31 (787)	6 (152)	6-1/2 (165)	9-5/16 (237)
326T	26 (660)	59-1/4 (1505)	60-5/16 (1532)	17 (432)	23-1/2 (597)	47-1/4 (1200)	23-5/8 (600)	1 (25)	6-1/2 (165)	25-1/4 (641)	31 (787)	6 (152)	6-1/2 (165)	9-5/16 (237)
364TS	26 (660)	59-1/4 (1505)	62-9/16 (1589)	17 (432)	23-1/2 (597)	47-1/4 (1200)	23-5/8 (600)	1 (25)	6-1/2 (165)	26-1/8 (663.5)	31 (787)	6 (152)	6-1/2 (165)	9-5/16 (237)
365TS	26 (660)	59-1/4 (1505)	62-1/2 (1588)	17 (432)	23-1/2 (597)	47-1/4 (1200)	23-5/8 (600)	1 (25)	6-1/2 (165)	27-1/4 (692)	31 (787)	6 (152)	6-1/2 (165)	9-5/16 (237)
404TS	26 (660)	59-1/4 (1505)	64-3/4 (1645)	17 (432)	23-1/2 (597)	47-1/4 (1200)	23-5/8 (600)	1 (25)	6-1/2 (165)	28-7/8 (733)	31 (787)	6 (152)	6-1/2 (165)	9-5/16 (237)
405TS	26 (660)	59-1/4 (1505)	66-1/4 (1683)	17 (432)	23-1/2 (597)	47-1/4 (1200)	23-5/8 (600)	1 (25)	6-1/2 (165)	28-7/8 (733)	31 (787)	6 (152)	6-1/2 (165)	9-5/16 (237)
444TS	26 (660)	59-1/4 (1505)	70-5/8 (1794)	18 (457)	23-1/2 (597)	47-1/4 (1200)	23-5/8 (600)	1 (25)	6-1/2 (165)	29-3/4 (756)	32 (813)	6 (152)	6-1/2 (165)	9-5/16 (237)

Dimensions are subject to change. Not to be used for construction purposes unless certified.

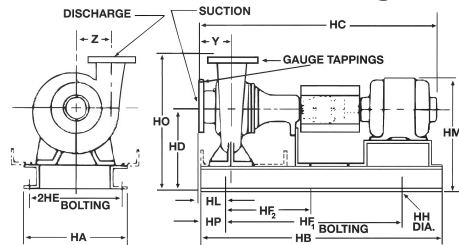
At 1800 RPM operation and impeller diameters greater than 12.5", "XL" bearing frame required.

Xylem Inc.
8200 N. Austin Avenue
Morton Grove, IL 60053
Phone: (847)966-3700
Fax: (847)965-8379
www.xyleminc.com/brands/bellgossett



Series e-1510 6G Centrifugal Pump Submittal

B-880.48



FLANGE DIMENSIONS IN INCHES (MM)			
	SIZE	THICKNESS	O.D.
Discharge	6" (152)	1-7/16 (37)	12-1/8 (308)
Suction	8" (203)	1-5/8 (41)	14-3/4 (375)

FLANGES ARE: 125# ANSI - STANDARD
250# ANSI - AVAILABLE

DIMENSIONS - Inches (mm)

STUFFING BOX

MOTOR FRAME	HA	HB	HC MAX	HD	2HE	HF ₁	HF ₂	HH	HL	HM MAX	HO	HP	Y	Z
"L" FRAME														
256T	24 (610)	56 (1422)	52 (1321)	16-1/2 (419)	21-1/2 (546)	44 (1118)	22 (559)	1 (25)	6-1/4 (159)	23-3/8 (594)	30-1/2 (775)	6 (152)	6-1/2 (165)	9-5/16 (237)
284T	24 (610)	56 (1422)	53 (1346)	16-1/2 (419)	21-1/2 (546)	44 (1118)	22 (559)	1 (25)	6-1/4 (159)	24-1/2 (622)	30-1/2 (775)	6 (152)	6-1/2 (165)	9-5/16 (237)
286T	24 (610)	56 (1422)	54-1/2 (1384)	16-1/2 (419)	21-1/2 (546)	44 (1118)	22 (559)	1 (25)	6-1/4 (159)	24-1/2 (622)	30-1/2 (775)	6 (152)	6-1/2 (165)	9-5/16 (237)
324T	24 (610)	56 (1422)	56-1/2 (1435)	16-1/2 (419)	21-1/2 (546)	44 (1118)	22 (559)	1 (25)	6-1/4 (159)	25-5/8 (651)	30-1/2 (775)	6 (152)	6-1/2 (165)	9-5/16 (237)
326T	24 (610)	56 (1422)	58 (1473)	16-1/2 (419)	21-1/2 (546)	44 (1118)	22 (559)	1 (25)	6-1/4 (159)	25-5/8 (651)	30-1/2 (775)	6 (152)	6-1/2 (165)	9-5/16 (237)
364T	24 (610)	56 (1422)	60-1/4 (1530)	16-1/2 (419)	21-1/2 (546)	44 (1118)	22 (559)	1 (25)	6-1/4 (159)	26-3/4 (679)	30-1/2 (775)	6 (152)	6-1/2 (165)	9-5/16 (237)
365T	24 (610)	56 (1422)	60-7/8 (1546)	16-1/2 (419)	21-1/2 (546)	44 (1118)	22 (559)	1 (25)	6-1/4 (159)	26-3/4 (679)	30-1/2 (775)	6 (152)	6-1/2 (165)	9-5/16 (237)
404TS	24 (610)	56 (1422)	61 (1549)	16-1/2 (419)	21-1/2 (546)	44 (1118)	22 (559)	1 (25)	6-1/4 (159)	28-3/8 (721)	30-1/2 (775)	6 (152)	6-1/2 (165)	9-5/16 (237)
405TS	24 (610)	56 (1422)	62 (1575)	16-1/2 (419)	21-1/2 (546)	44 (1118)	22 (559)	1 (25)	6-1/4 (159)	30 (762)	30-1/2 (775)	6 (152)	6-1/2 (165)	9-5/16 (237)
"XL" FRAME														
324T	26 (660)	59-1/4 (1505)	62-3/8 (1584)	17 (432)	23-1/2 (597)	47-1/4 (1200)	23-5/8 (600)	1 (25)	6-1/2 (165)	25-1/4 (641)	31 (787)	6 (152)	6-1/2 (165)	9-5/16 (237)
326T	26 (660)	59-1/4 (1505)	62-3/8 (1584)	17 (432)	23-1/2 (597)	47-1/4 (1200)	23-5/8 (600)	1 (25)	6-1/2 (165)	25-1/4 (641)	31 (787)	6 (152)	6-1/2 (165)	9-5/16 (237)
364TS	26 (660)	59-1/4 (1505)	62-3/4 (1594)	17 (432)	23-1/2 (597)	47-1/4 (1200)	23-5/8 (600)	1 (25)	6-1/2 (165)	26-1/8 (664)	31 (787)	6 (152)	6-1/2 (165)	9-5/16 (237)
365TS	26 (660)	59-1/4 (1505)	64-3/4 (1645)	17 (432)	23-1/2 (597)	47-1/4 (1200)	23-5/8 (600)	1 (25)	6-1/2 (165)	27-1/4 (692)	31 (787)	6 (152)	6-1/2 (165)	9-5/16 (237)
404TS	26 (660)	59-1/4 (1505)	67 (1702)	17 (432)	23-1/2 (597)	47-1/4 (1200)	23-5/8 (600)	1 (25)	6-1/2 (165)	28-7/8 (733)	31 (787)	6 (152)	6-1/2 (165)	9-5/16 (237)
405TS	26 (660)	59-1/4 (1505)	68-1/2 (1740)	17 (432)	23-1/2 (597)	47-1/4 (1200)	23-5/8 (600)	1 (25)	6-1/2 (165)	28-7/8 (733)	31 (787)	6 (152)	6-1/2 (165)	9-5/16 (237)
444TS	26 (660)	59-1/4 (1505)	72-3/4 (1848)	18 (457)	23-1/2 (597)	47-1/4 (1200)	23-5/8 (600)	1 (25)	6-1/2 (165)	29-3/4 (756)	32 (813)	6 (152)	6-1/2 (165)	9-5/16 (237)

Dimensions are subject to change. Not to be used for construction purposes unless certified.

At 1800 RPM operation and impeller diameters greater than 12.5", "XL" bearing frame required.

Xylem Inc.
8200 N. Austin Avenue
Morton Grove, IL 60053
Phone: (847)966-3700
Fax: (847)965-8379
www.xyleminc.com/brands/bellgossett

