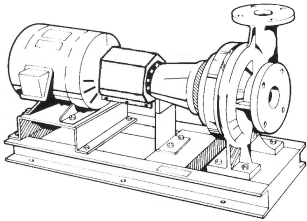


<b>JOB:</b>	<b>REPRESENTATIVE:</b>	
<b>UNIT TAG:</b>	<b>ORDER NO.:</b>	<b>DATE:</b>
<b>ENGINEER:</b>	<b>SUBMITTED BY:</b>	<b>DATE:</b>
<b>CONTRACTOR:</b>	<b>APPROVED BY:</b>	<b>DATE:</b>



# 6E

## Series e-1510

### Centrifugal Pumps - Base Mounted

**SPECIFICATIONS**

FLOW \_\_\_\_\_ HEAD \_\_\_\_\_

HP \_\_\_\_\_ RPM \_\_\_\_\_

VOLTS \_\_\_\_\_

CYCLE \_\_\_\_\_ PHASE \_\_\_\_\_

ENCLOSURE \_\_\_\_\_

APPROX. WEIGHT \_\_\_\_\_

SPECIALS \_\_\_\_\_

**MATERIALS OF CONSTRUCTION**

- Stainless Steel Fitted

**FEATURES**

- i-ALERT™ Condition Monitor
- ANSI/OSHA Coupling Guard
- Center Drop Out Spacer Coupling
- Fabricated Heavy Duty Baseplate

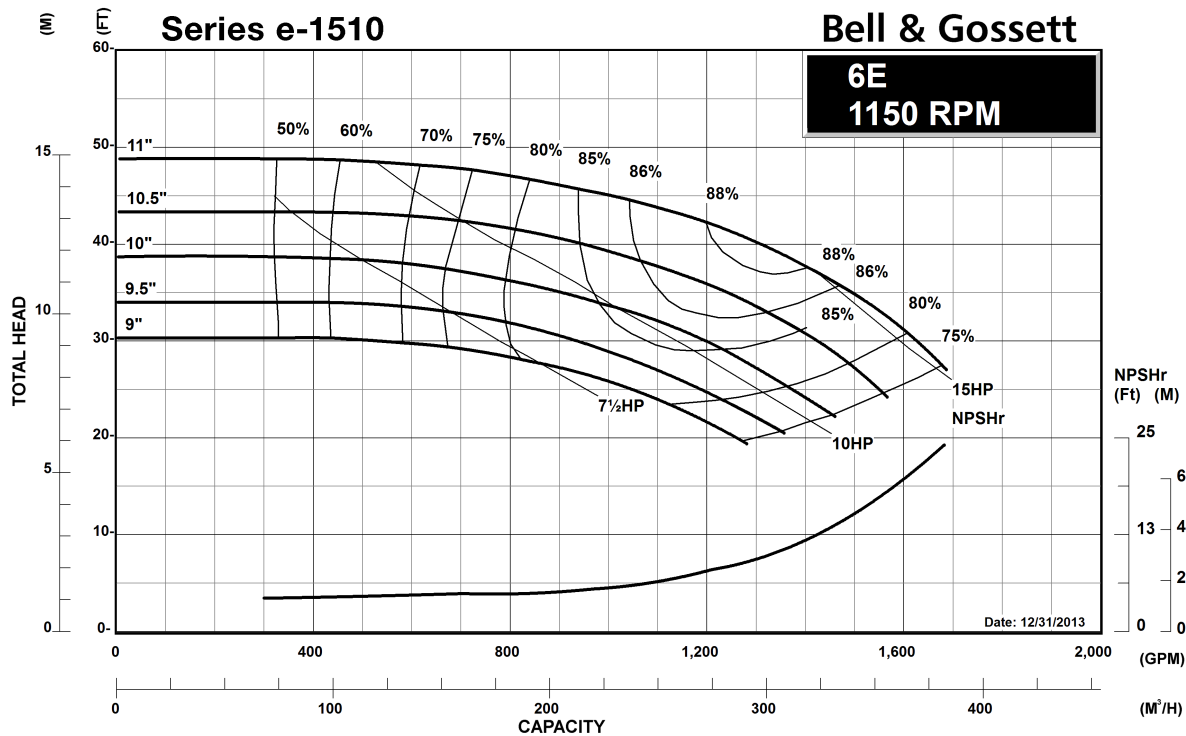
**MAXIMUM WORKING PRESSURE**

- 175 psi (12 bar) W.P. w/ 125# ANSI flange drilling
- 250 psi (17 bar) W.P. w/250# ANSI flange drilling (requires 1510-S)

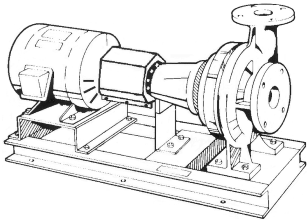
**TYPE OF SEAL**

- Standard Seal (Buna-Carbon/Ceramic)
- F Standard Seal w/ Flush Line (Buna-Carbon/Ceramic)
- S Stuffing Box Construction w/ Flushed Mechanical Single Seal (EPR-Tungsten Carbide/Carbon)
- PF Stuffing Box Construction w/ Packing (Graphite Impregnated Teflon)

**Note:** Equipped with NEOPRENE coupling



<b>JOB:</b>	<b>REPRESENTATIVE:</b>	
<b>UNIT TAG:</b>	<b>ORDER NO.</b>	<b>DATE:</b>
<b>ENGINEER:</b>	<b>SUBMITTED BY:</b>	<b>DATE:</b>
<b>CONTRACTOR:</b>	<b>APPROVED BY:</b>	<b>DATE:</b>



# 6E

## Series e-1510

### Centrifugal Pumps - Base Mounted

**SPECIFICATIONS**

FLOW \_\_\_\_\_ HEAD \_\_\_\_\_

HP \_\_\_\_\_ RPM \_\_\_\_\_

VOLTS \_\_\_\_\_

CYCLE \_\_\_\_\_ PHASE \_\_\_\_\_

ENCLOSURE \_\_\_\_\_

APPROX. WEIGHT \_\_\_\_\_

SPECIALS \_\_\_\_\_

**MATERIALS OF CONSTRUCTION**

Stainless Steel Fitted

**FEATURES**

- i-ALERT™ Condition Monitor
- ANSI/OSHA Coupling Guard
- Center Drop Out Spacer Coupling
- Fabricated Heavy Duty Baseplate

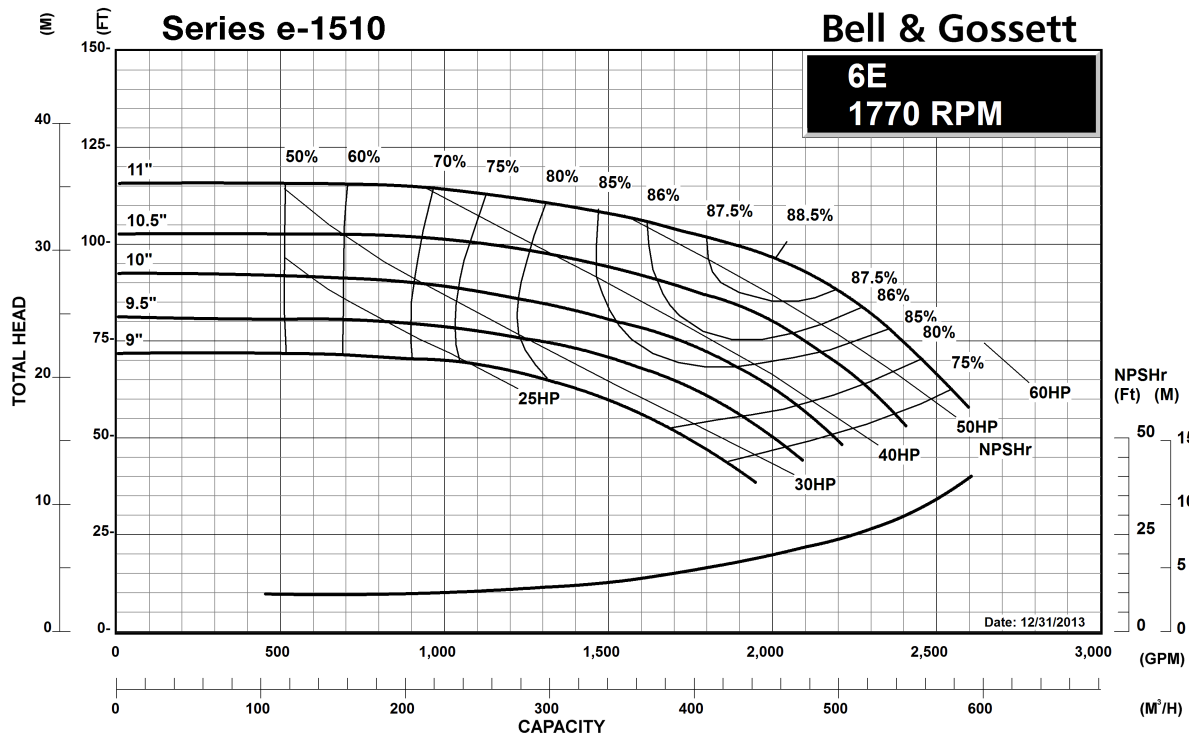
**TYPE OF SEAL**

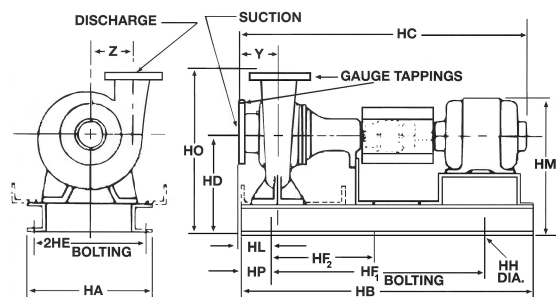
- Standard Seal (Buna-Carbon/Ceramic)
- F Standard Seal w/ Flush Line (Buna-Carbon/Ceramic)
- S Stuffing Box Construction w/ Flushed Mechanical Single Seal (EPR-Tungsten Carbide/Carbon)
- PF Stuffing Box Construction w/ Packing (Graphite Impregnated Teflon)

**MAXIMUM WORKING PRESSURE**

- 175 psi (12 bar) W.P. w/ 125# ANSI flange drilling
- 250 psi (17 bar) W.P. w/250# ANSI flange drilling (requires 1510-S)

**Note:** Equipped with NEOPRENE coupling





FLANGE DIMENSIONS IN INCHES (MM)			
	SIZE	THICKNESS	O.D.
Discharge	6" (152)	1-7/16" (37)	12-1/8" (308)
Suction	8" (203)	1-5/8" (41)	14-3/4" (375)

FLANGES ARE 125# ANSI - STANDARD  
250# ANSI - AVAILABLE

DIMENSIONS - Inches (mm)

STANDARD SEAL

MOTOR FRAME	HA	HB	HC MAX	HD	2HE	HF <sub>1</sub>	HF <sub>2</sub>	HH	HL	HM MAX	HO	HP	Y	Z
"L" FRAME														
254T	24 (610)	56 (1422)	47-5/8 (1210)	16-1/2 (419)	21-1/2 (546)	44 (1118)	22 (559)	1 (25)	6 (152)	23-3/8 (594)	27-1/2 (698)	6 (152)	6-1/8 (156)	8-15/32 (215)
256T	24 (610)	56 (1422)	49-3/8 (1254)	16-1/2 (419)	21-1/2 (546)	44 (1118)	22 (559)	1 (25)	6 (152)	23-3/8 (594)	27-1/2 (698)	6 (152)	6-1/8 (156)	8-15/32 (215)
284T	24 (610)	56 (1422)	50-5/16 (1278)	16-1/2 (419)	21-1/2 (546)	44 (1118)	22 (559)	1 (25)	6 (152)	24-1/2 (622)	27-1/2 (698)	6 (152)	6-1/8 (156)	8-15/32 (215)
286T	24 (610)	56 (1422)	51-13/16 (1316)	16-1/2 (419)	21-1/2 (546)	44 (1118)	22 (559)	1 (25)	6 (152)	24-1/2 (622)	27-1/2 (698)	6 (152)	6-1/8 (156)	8-15/32 (215)
324T	24 (610)	56 (1422)	53-7/8 (1368)	16-1/2 (419)	21-1/2 (546)	44 (1118)	22 (559)	1 (25)	6 (152)	25-5/8 (651)	27-1/2 (698)	6 (152)	6-1/8 (156)	8-15/32 (215)
326T	24 (610)	56 (1422)	55-3/8 (1407)	16-1/2 (419)	21-1/2 (546)	44 (1118)	22 (559)	1 (25)	6 (152)	25-5/8 (651)	27-1/2 (698)	6 (152)	6-1/8 (156)	8-15/32 (215)
364T	24 (610)	56 (1422)	57-9/16 (1462)	16-1/2 (419)	21-1/2 (546)	44 (1118)	22 (559)	1 (25)	6 (152)	26-3/4 (679)	27-1/2 (698)	6 (152)	6-1/8 (156)	8-15/32 (215)

STUFFING BOX

MOTOR FRAME	HA	HB	HC MAX	HD	2HE	HF <sub>1</sub>	HF <sub>2</sub>	HH	HL	HM MAX	HO	HP	Y	Z
"L" FRAME														
254T	24 (610)	56 (1422)	50 (1270)	16-1/2 (419)	21-1/2 (546)	44 (1118)	22 (559)	1 (25)	6 (152)	23-3/8 (594)	27-1/2 (698)	6 (152)	6-1/8 (155)	8-15/32 (215)
256T	24 (610)	56 (1422)	51-3/4 (1314)	16-1/2 (419)	21-1/2 (546)	44 (1118)	22 (559)	1 (25)	6 (152)	23-3/8 (594)	27-1/2 (698)	6 (152)	6-1/8 (155)	8-15/32 (215)
284T	24 (610)	56 (1422)	52-11/16 (1338)	16-1/2 (419)	21-1/2 (546)	44 (1118)	22 (559)	1 (25)	6 (152)	24-1/2 (622)	27-1/2 (698)	6 (152)	6-1/8 (155)	8-15/32 (215)
286T	24 (610)	56 (1422)	54-3/16 (1376)	16-1/2 (419)	21-1/2 (546)	44 (1118)	22 (559)	1 (25)	6 (152)	24-1/2 (622)	27-1/2 (698)	6 (152)	6-1/8 (155)	8-15/32 (215)
324T	24 (610)	56 (1422)	56-1/4 (1429)	16-1/2 (419)	21-1/2 (546)	44 (1118)	22 (559)	1 (25)	6 (152)	25-5/8 (651)	27-1/2 (698)	6 (152)	6-1/8 (155)	8-15/32 (215)
326T	24 (610)	56 (1422)	57-3/4 (1467)	16-1/2 (419)	21-1/2 (546)	44 (1118)	22 (559)	1 (25)	6 (152)	25-5/8 (651)	27-1/2 (698)	6 (152)	6-1/8 (155)	8-15/32 (215)
364T	24 (610)	56 (1422)	59-15/16 (1522)	16-1/2 (419)	21-1/2 (546)	44 (1118)	22 (559)	1 (25)	6 (152)	26-3/4 (679)	27-1/2 (698)	6 (152)	6-1/8 (155)	8-15/32 (215)

Dimensions are subject to change. Not to be used for construction purposes unless certified.

Xylem Inc.  
8200 N. Austin Avenue  
Morton Grove, IL 60053  
Phone: (847)966-3700  
Fax: (847)965-8379  
www.bellgossett.com



Bell & Gossett is a trademark of Xylem Inc. or one of its subsidiaries.  
© 2013 Xylem Inc.