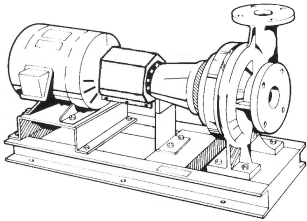


<b>JOB:</b>	<b>REPRESENTATIVE:</b>	
<b>UNIT TAG:</b>	<b>ORDER NO.</b>	<b>DATE:</b>
<b>ENGINEER:</b>	<b>SUBMITTED BY:</b>	<b>DATE:</b>
<b>CONTRACTOR:</b>	<b>APPROVED BY:</b>	<b>DATE:</b>



# 6BD Series e-1510 Centrifugal Pumps - Base Mounted

**SPECIFICATIONS**

FLOW \_\_\_\_\_ HEAD \_\_\_\_\_  
 HP \_\_\_\_\_ RPM \_\_\_\_\_  
 VOLTS \_\_\_\_\_  
 CYCLE \_\_\_\_\_ PHASE \_\_\_\_\_  
 ENCLOSURE \_\_\_\_\_  
 APPROX. WEIGHT \_\_\_\_\_  
 SPECIALS \_\_\_\_\_

**MATERIALS OF CONSTRUCTION**

Stainless Steel Fitted

**FEATURES**

- i-ALERT™ Condition Monitor
- ANSI/OSHA Coupling Guard
- Center Drop Out Spacer Coupling
- Fabricated Heavy Duty Baseplate

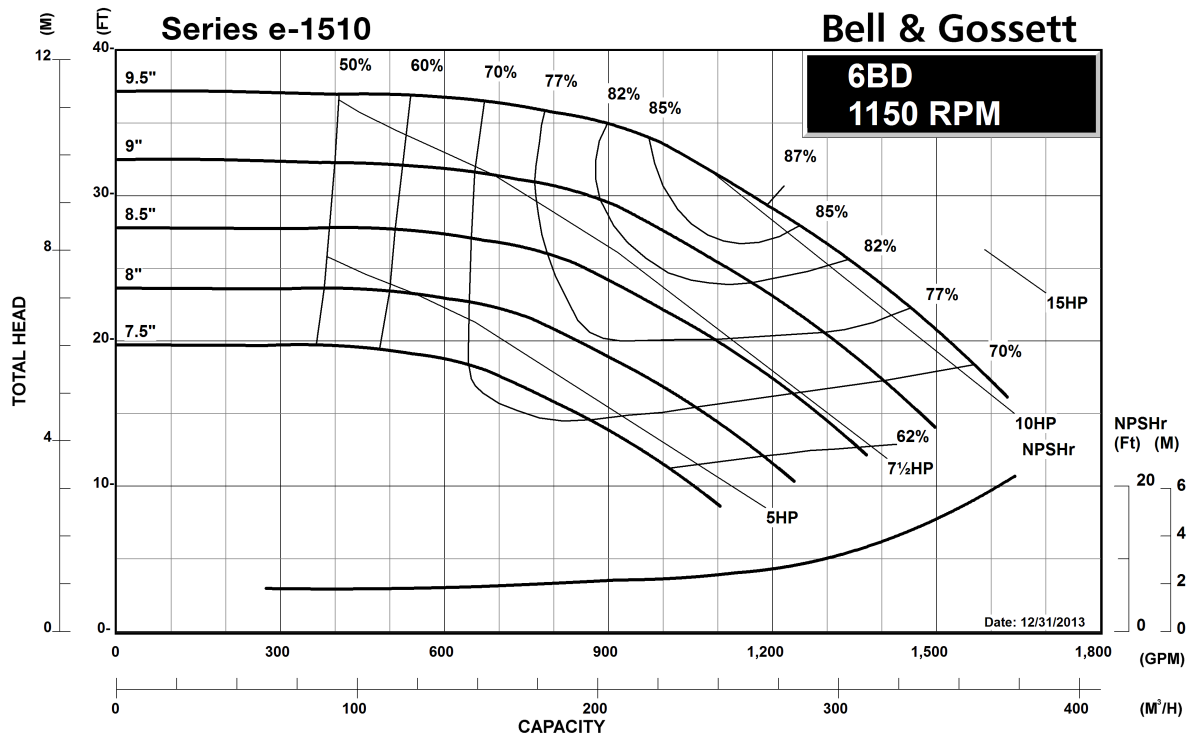
**TYPE OF SEAL**

- Standard Seal (Buna-Carbon/Ceramic)
- F Standard Seal w/ Flush Line (Buna-Carbon/Ceramic)
- S Stuffing Box Construction w/ Flushed Mechanical Single Seal (EPR-Tungsten Carbide/Carbon)
- PF Stuffing Box Construction w/ Packing (Graphite Impregnated Teflon)

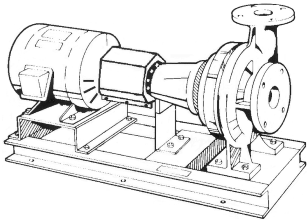
**MAXIMUM WORKING PRESSURE**

- 175 psi (12 bar) W.P. w/ 125# ANSI flange drilling
- 250 psi (17 bar) W.P. w/250# ANSI flange drilling (requires 1510-S)

Note: Equipped with NEOPRENE coupling



<b>JOB:</b>   <b>UNIT TAG:</b> <b>ENGINEER:</b> <b>CONTRACTOR:</b>	<b>REPRESENTATIVE:</b>   <b>ORDER NO.:</b> <b>SUBMITTED BY:</b> <b>APPROVED BY:</b>	<b>DATE:</b> <b>DATE:</b> <b>DATE:</b>
---	--	--



# 6BD

## Series e-1510

### Centrifugal Pumps - Base Mounted

**SPECIFICATIONS**

FLOW \_\_\_\_\_ HEAD \_\_\_\_\_  
 HP \_\_\_\_\_ RPM \_\_\_\_\_  
 VOLTS \_\_\_\_\_  
 CYCLE \_\_\_\_\_ PHASE \_\_\_\_\_  
 ENCLOSURE \_\_\_\_\_  
 APPROX. WEIGHT \_\_\_\_\_  
 SPECIALS \_\_\_\_\_

**MATERIALS OF CONSTRUCTION**

Stainless Steel Fitted

**FEATURES**

- i-ALERT™ Condition Monitor
- ANSI/OSHA Coupling Guard
- Center Drop Out Spacer Coupling
- Fabricated Heavy Duty Baseplate

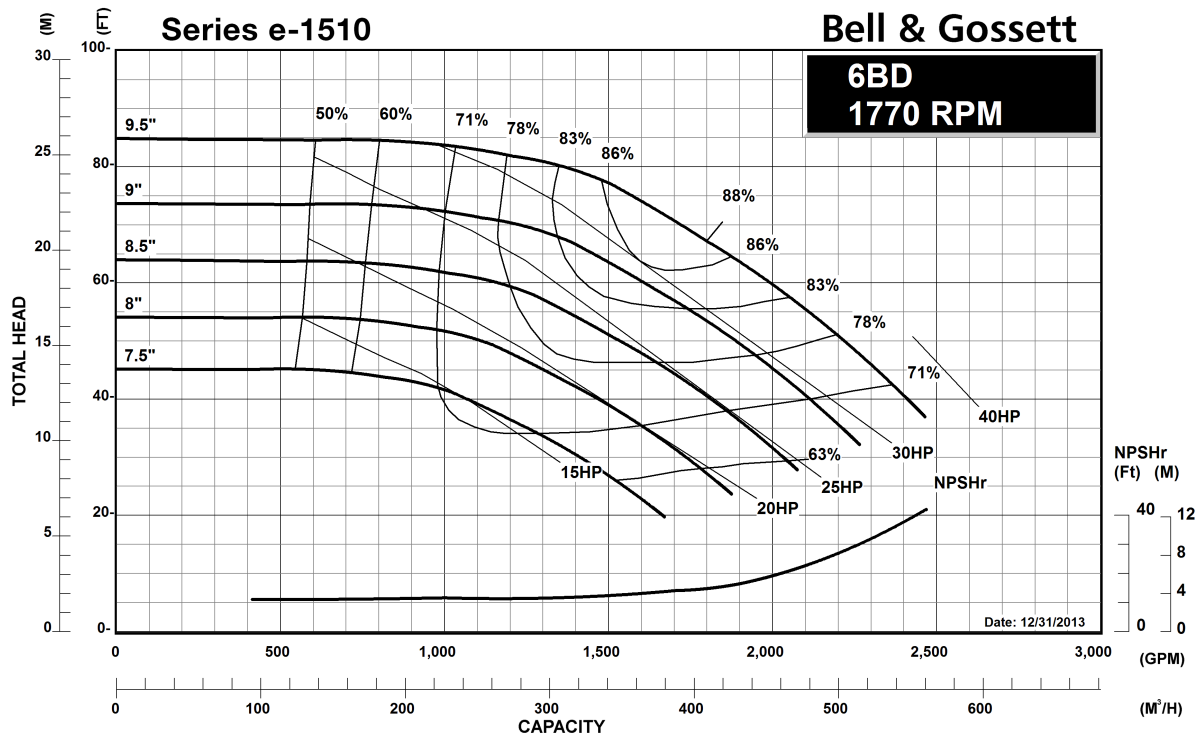
**TYPE OF SEAL**

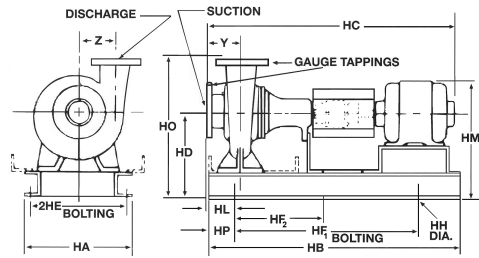
- Standard Seal (Buna-Carbon/Ceramic)
- F Standard Seal w/ Flush Line (Buna-Carbon/Ceramic)
- S Stuffing Box Construction w/ Flushed Mechanical Single Seal (EPR-Tungsten Carbide/Carbon)
- PF Stuffing Box Construction w/ Packing (Graphite Impregnated Teflon)

**MAXIMUM WORKING PRESSURE**

- 175 psi (12 bar) W.P. w/ 125# ANSI flange drilling
- 250 psi (17 bar) W.P. w/250# ANSI flange drilling (requires 1510-S)

Note: Equipped with NEOPRENE coupling





FLANGE DIMENSIONS IN INCHES (MM)			
	SIZE	THICKNESS	O.D.
Discharge	6" (152)	1-7/16" (37)	12-1/8" (308)
Suction	8" (203)	1-5/8" (41)	14-3/4" (375)

FLANGES ARE 125# ANSI - STANDARD  
250# ANSI - AVAILABLE

DIMENSIONS - Inches (mm)

STANDARD SEAL

MOTOR FRAME	HA	HB	HC MAX	HD	2HE	HF <sub>1</sub>	HF <sub>2</sub>	HH	HL	HM MAX	HO	HP	Y	Z
"L" FRAME														
254T	16 (406)	46-1/2 (1181)	50-5/8 (1286)	15 (381)	14 (356)	36-1/2 (927)	18-1/4 (464)	7/8 (22)	8-3/8 (213)	21-7/8 (556)	25-1/2 (648)	5 (127)	7 (178)	8-1/4 (210)
256T	16 (406)	46-1/2 (1181)	52-3/8 (1330)	15 (381)	14 (356)	36-1/2 (927)	18-1/4 (464)	7/8 (22)	8-3/8 (213)	21-7/8 (556)	25-1/2 (648)	5 (127)	7 (178)	8-1/4 (210)
284T	16 (406)	51-3/4 (1314)	53-1/8 (1349)	15 (381)	14 (356)	41-3/4 (1060)	20-7/8 (530)	7/8 (22)	8-3/8 (213)	23 (584)	25-1/2 (648)	5 (127)	7 (178)	8-1/4 (210)
286T	16 (406)	51-3/4 (1314)	54-5/8 (1387)	15 (381)	14 (356)	41-3/4 (1060)	20-7/8 (530)	7/8 (22)	8-3/8 (213)	23 (584)	25-1/2 (648)	5 (127)	7 (178)	8-1/4 (210)
324T	16 (406)	51-3/4 (1314)	56-7/8 (1445)	15 (381)	14 (356)	41-3/4 (1060)	20-7/8 (530)	7/8 (22)	8-3/8 (213)	24-1/8 (613)	25-1/2 (648)	5 (127)	7 (178)	8-1/4 (210)
326T	16 (406)	51-3/4 (1314)	58-3/8 (1483)	15 (381)	14 (356)	41-3/4 (1060)	20-7/8 (530)	7/8 (22)	8-3/8 (213)	24-1/8 (613)	25-1/2 (648)	5 (127)	7 (178)	8-1/4 (210)

STUFFING BOX

MOTOR FRAME	HA	HB	HC MAX	HD	2HE	HF <sub>1</sub>	HF <sub>2</sub>	HH	HL	HM MAX	HO	HP	Y	Z
"L" FRAME														
254T	16 (406)	51-3/4 (1314)	53 (1346)	15 (381)	14 (356)	41-3/4 (1060)	20-7/8 (530)	7/8 (22)	8-3/8 (213)	21-7/8 (555)	25-1/2 (648)	5 (127)	7 (178)	8-1/4 (210)
256T	16 (406)	51-3/4 (1314)	54-3/4 (1391)	15 (381)	14 (356)	41-3/4 (1060)	20-7/8 (530)	7/8 (22)	8-3/8 (213)	21-7/8 (555)	25-1/2 (648)	5 (127)	7 (178)	8-1/4 (210)
284T	16 (406)	51-3/4 (1314)	55-1/2 (1410)	15 (381)	14 (356)	41-3/4 (1060)	20-7/8 (530)	7/8 (22)	8-3/8 (213)	23 (584)	25-1/2 (648)	5 (127)	7 (178)	8-1/4 (210)
286T	16 (406)	51-3/4 (1314)	57 (1448)	15 (381)	14 (356)	41-3/4 (1060)	20-7/8 (530)	7/8 (22)	8-3/8 (213)	23 (584)	25-1/2 (648)	5 (127)	7 (178)	8-1/4 (210)
324T	16 (406)	51-3/4 (1314)	59-1/4 (1505)	15 (381)	14 (356)	41-3/4 (1060)	20-7/8 (530)	7/8 (22)	8-3/8 (213)	24-1/8 (613)	25-1/2 (648)	5 (127)	7 (178)	8-1/4 (210)
326T	16 (406)	51-3/4 (1314)	60-3/4 (1543)	15 (381)	14 (356)	41-3/4 (1060)	20-7/8 (530)	7/8 (22)	8-3/8 (213)	24-1/8 (613)	25-1/2 (648)	5 (127)	7 (178)	8-1/4 (210)

Dimensions are subject to change. Not to be used for construction purposes unless certified.

Xylem Inc.  
8200 N. Austin Avenue  
Morton Grove, IL 60053  
Phone: (847)966-3700  
Fax: (847)965-8379  
www.xyleminc.com/brands/bellgossett

